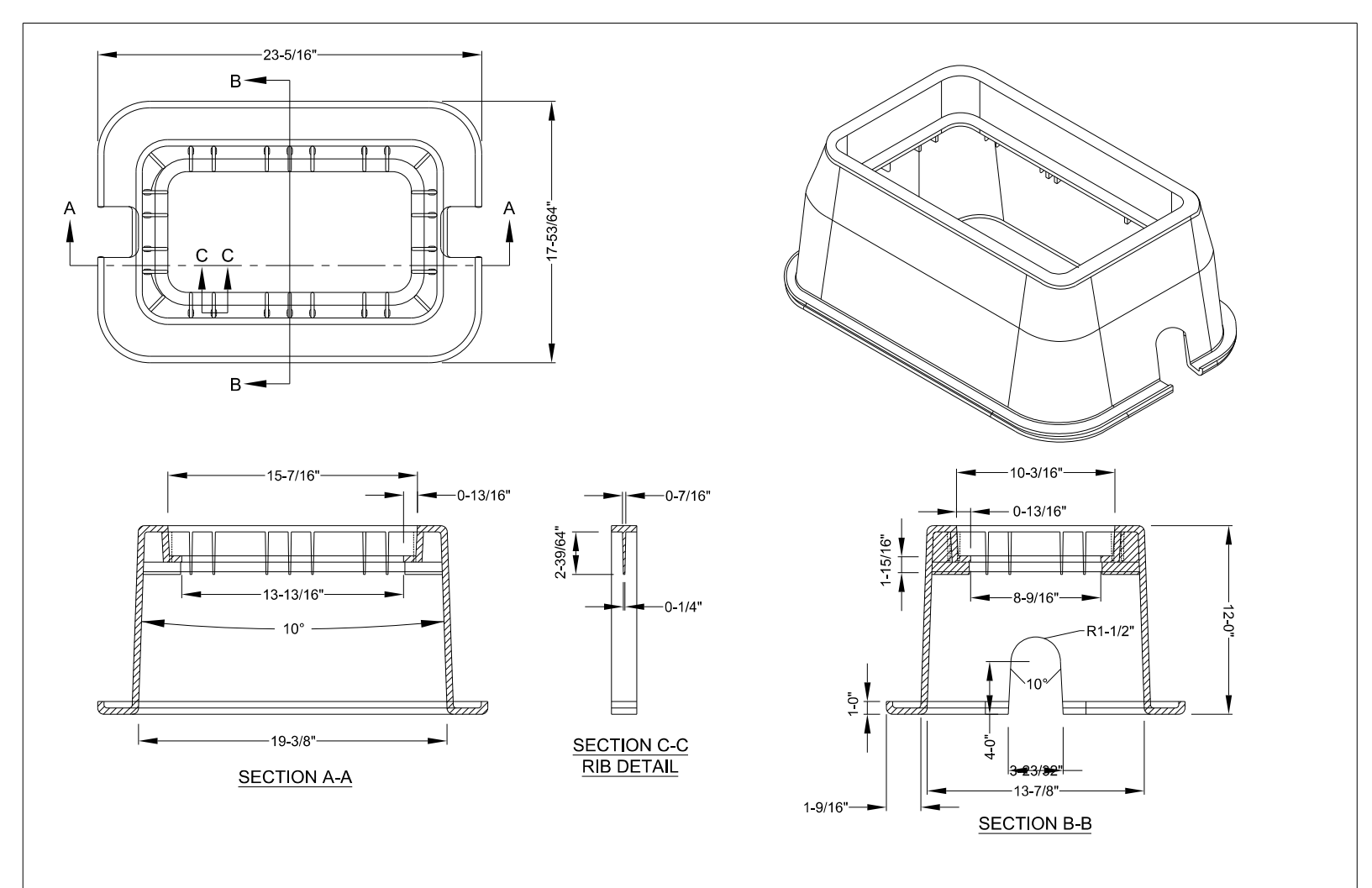


07-DEC-2021 06:27 Paramonental\Fayetteville Public Works Commission\2019061600RA - U-5798 Gills Hill Road Utility Coordination\CADD\Microstation\Utilities\Engineering\UC\Proj\U-5798A_ut.dtl UC03C_psh.dgn
 5/14/99

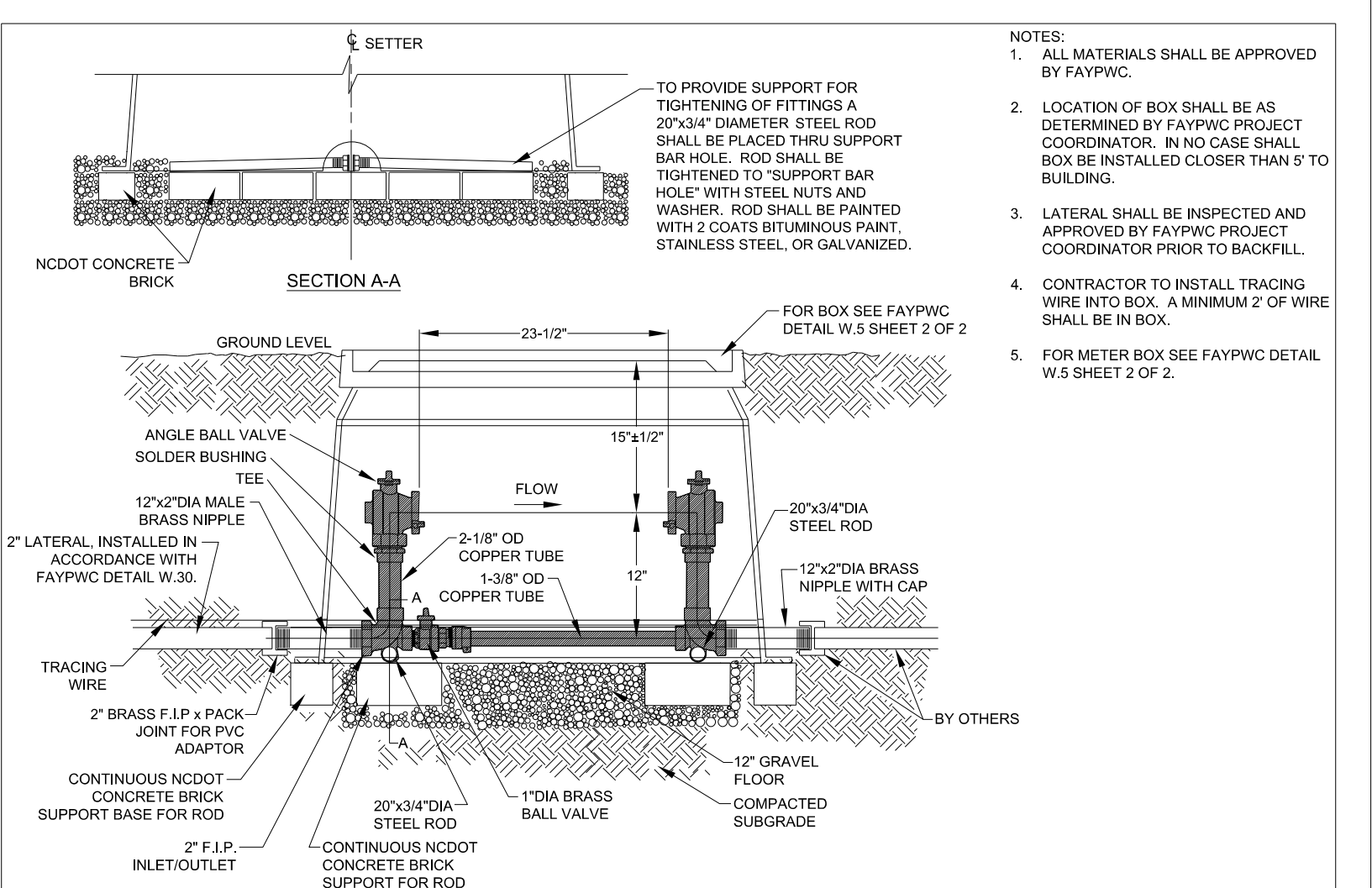
PROJECT REFERENCE NO.	SHEET NO.
U-5798A	UC-3C
DESIGNED BY: AAA	
DRAWN BY: KNS	
CHECKED BY: BRO	
APPROVED BY: BRO	
REVISED:	
NORTH CAROLINA DEPARTMENT OF TRANSPORTATION	
UTILITIES ENGINEERING SEC. PHONE: (919) 707-6690 FAX: (919) 250-4151	
UTILITY CONSTRUCTION PLANS ONLY	

UTILITY CONSTRUCTION

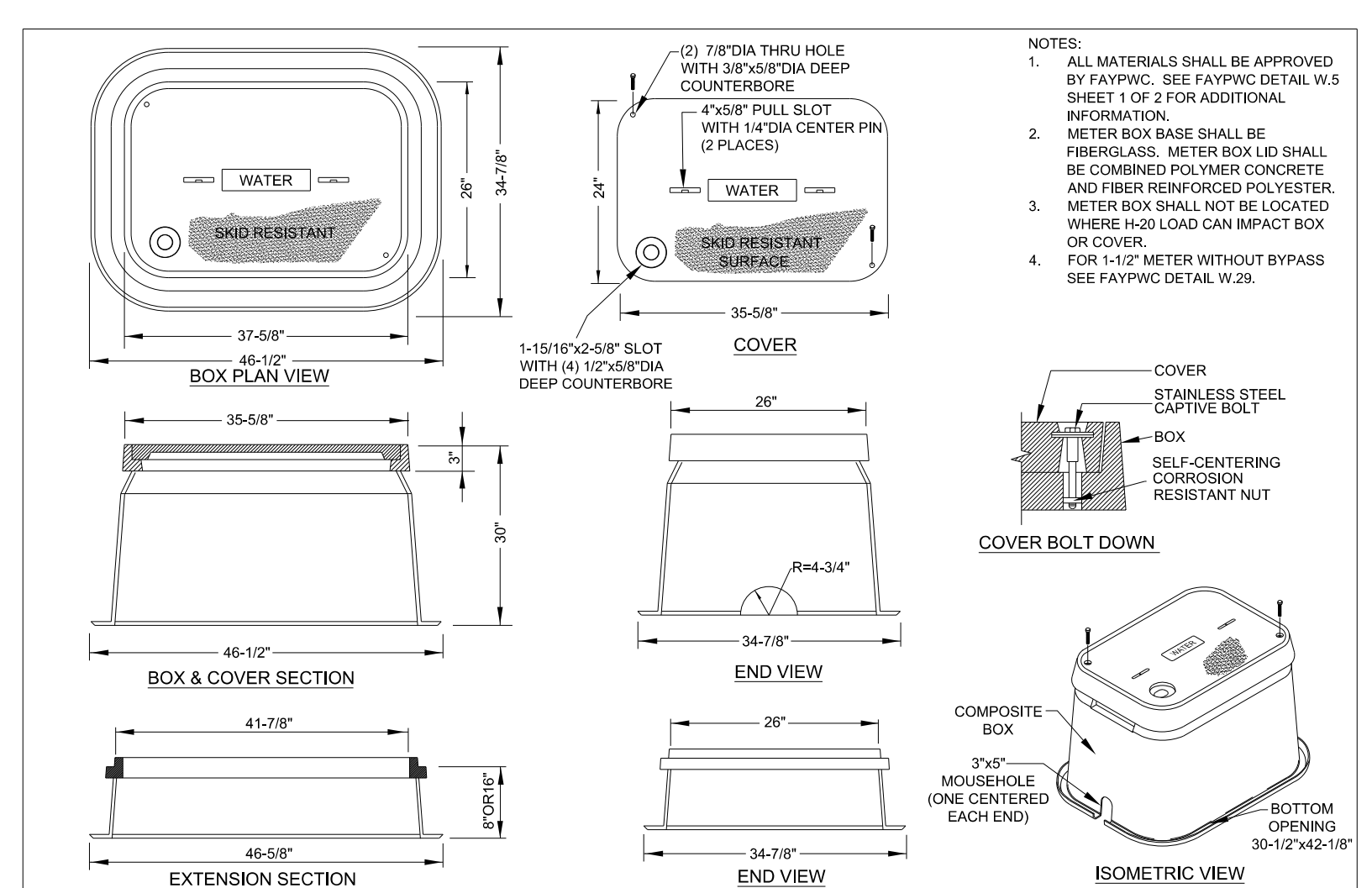
DOCUMENT NOT CONSIDERED FINAL
UNLESS ALL SIGNATURES COMPLETED



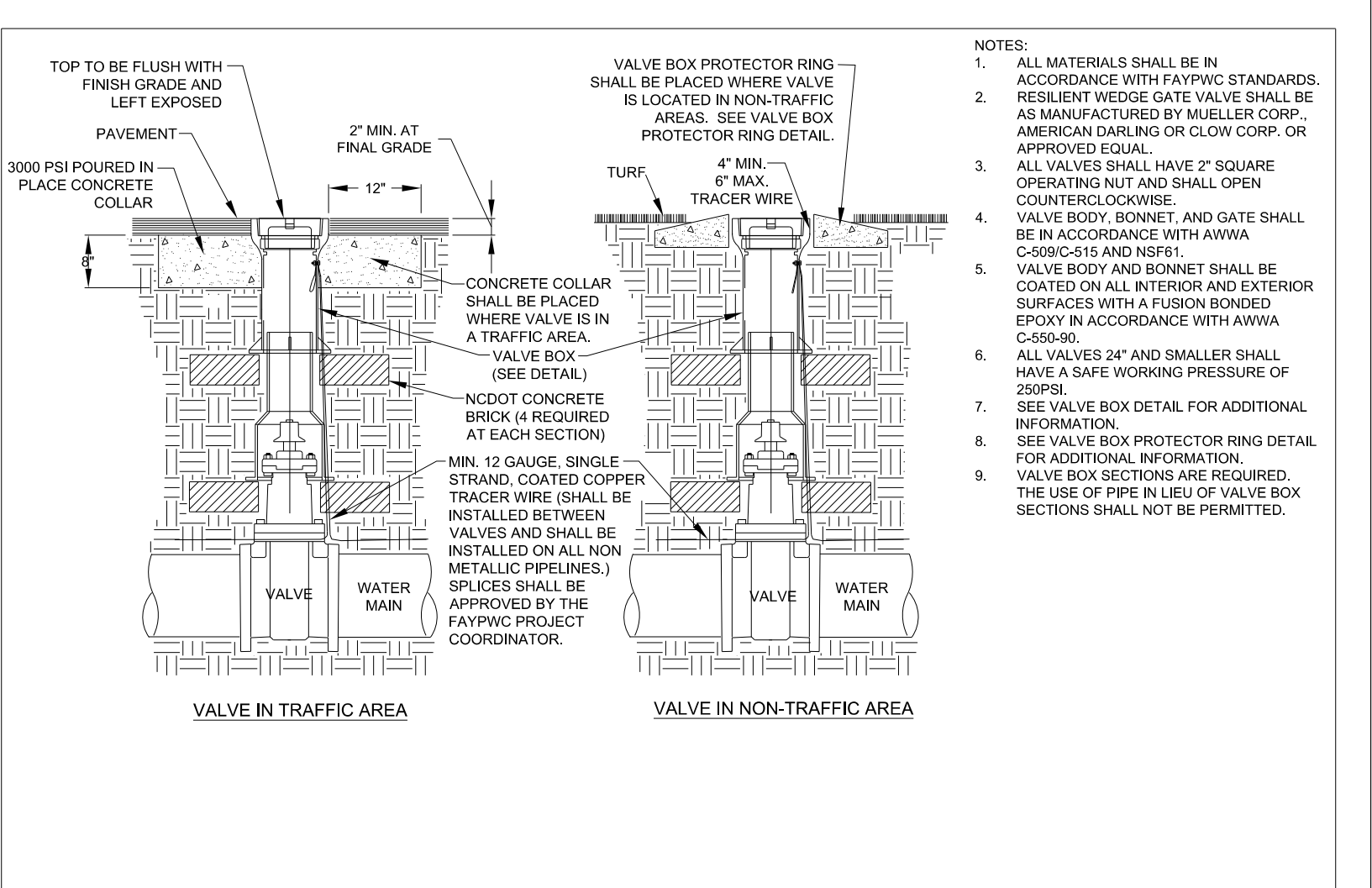
1-INCH COMPOSITE METER BOX & COVER N.T.S.		FAYETTEVILLE PUBLIC WORKS COMMISSION FAYETTEVILLE, N.C.		NO. DATE REVISION	
DWG. NO. W.4B DWG. BY: FAYPWC		FAYETTEVILLE PUBLIC WORKS COMMISSION ENGINEERING DEPARTMENT		1 12/15 REPLACED CI BOX WITH COMPOSITE BOX	
SHEET NO. 2 OF 2	DATE: JULY 01, 2021 APPROVED BY: J.E.G.	FAYETTEVILLE PUBLIC WORKS COMMISSION ENGINEERING DEPARTMENT		W4B-METERBOX-LID.dwg	



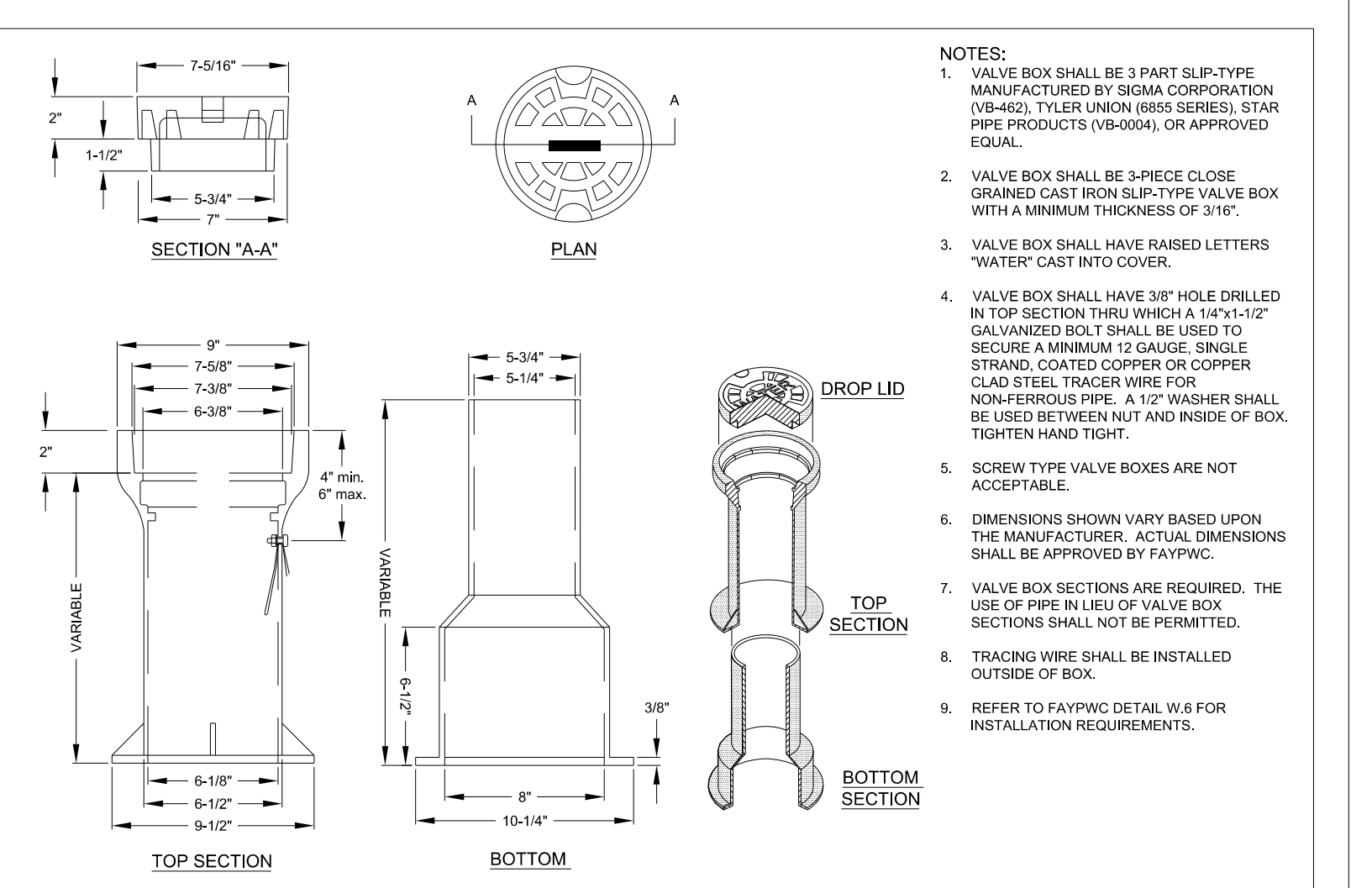
2" COPPER SETTER WITH BY-PASS 23-1/2" METER SPACING N.T.S.		FAYETTEVILLE PUBLIC WORKS COMMISSION FAYETTEVILLE, N.C.		NO. DATE REVISION	
DWG. NO. W.5 DWG. BY: FAYPWC		FAYETTEVILLE PUBLIC WORKS COMMISSION ENGINEERING DEPARTMENT		1 07/13 REVISED, UPDATED NOTES	
SHEET NO. 1 OF 2	DATE: JULY 01, 2021 APPROVED BY: J.E.G.	FAYETTEVILLE PUBLIC WORKS COMMISSION ENGINEERING DEPARTMENT		W5-2-METER-SETTER.dwg	



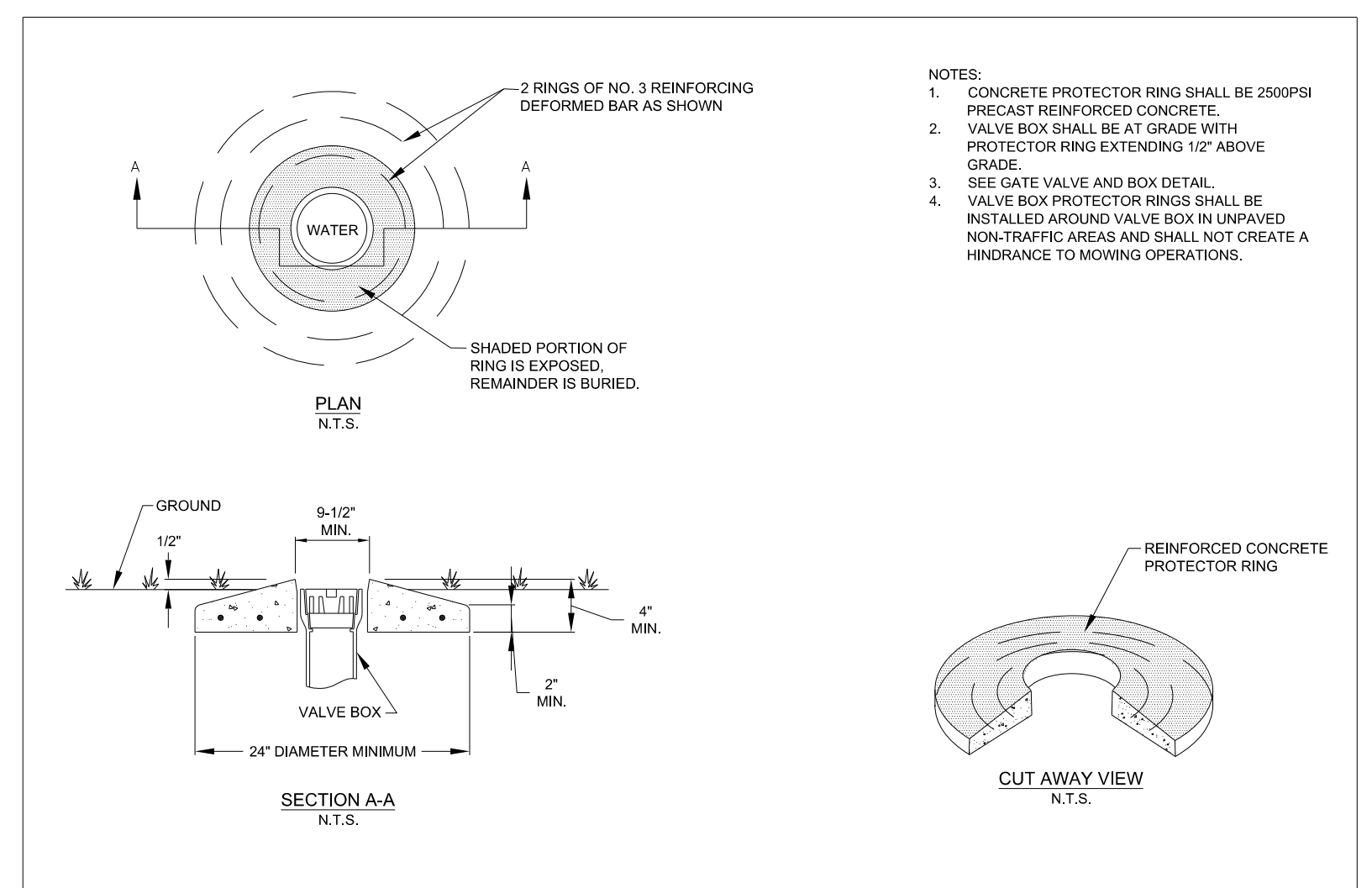
1-1/2" AND 2" BY-PASS METER BOX N.T.S.		FAYETTEVILLE PUBLIC WORKS COMMISSION FAYETTEVILLE, N.C.		NO. DATE REVISION	
DWG. NO. W.5 DWG. BY: FAYPWC		FAYETTEVILLE PUBLIC WORKS COMMISSION ENGINEERING DEPARTMENT		1 12/15 REVISED LID	
SHEET NO. 2 OF 2	DATE: JULY 01, 2021 APPROVED BY: J.E.G.	FAYETTEVILLE PUBLIC WORKS COMMISSION ENGINEERING DEPARTMENT		W5-2-METER-SETTER.dwg	



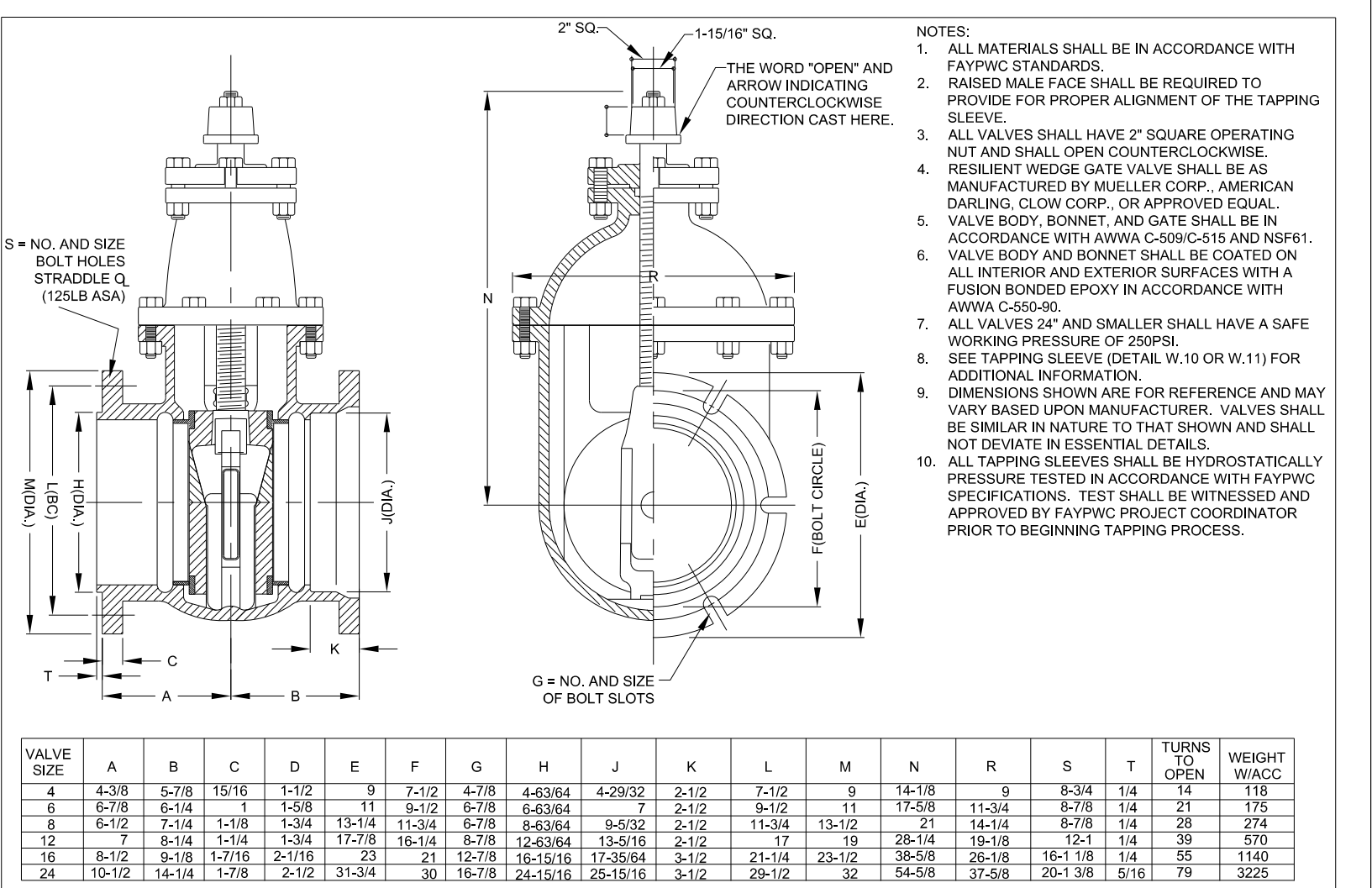
GATE VALVE N.T.S.		FAYETTEVILLE PUBLIC WORKS COMMISSION FAYETTEVILLE, N.C.		NO. DATE REVISION	
DWG. NO. W.6 DWG. BY: FAYPWC		FAYETTEVILLE PUBLIC WORKS COMMISSION ENGINEERING DEPARTMENT		1 8/06 ADDED NOTE NO. 9	
SHEET NO. 1 OF 1	DATE: JULY 01, 2021 APPROVED BY: J.E.G.	FAYETTEVILLE PUBLIC WORKS COMMISSION ENGINEERING DEPARTMENT		W6-GATEVALVE.dwg	



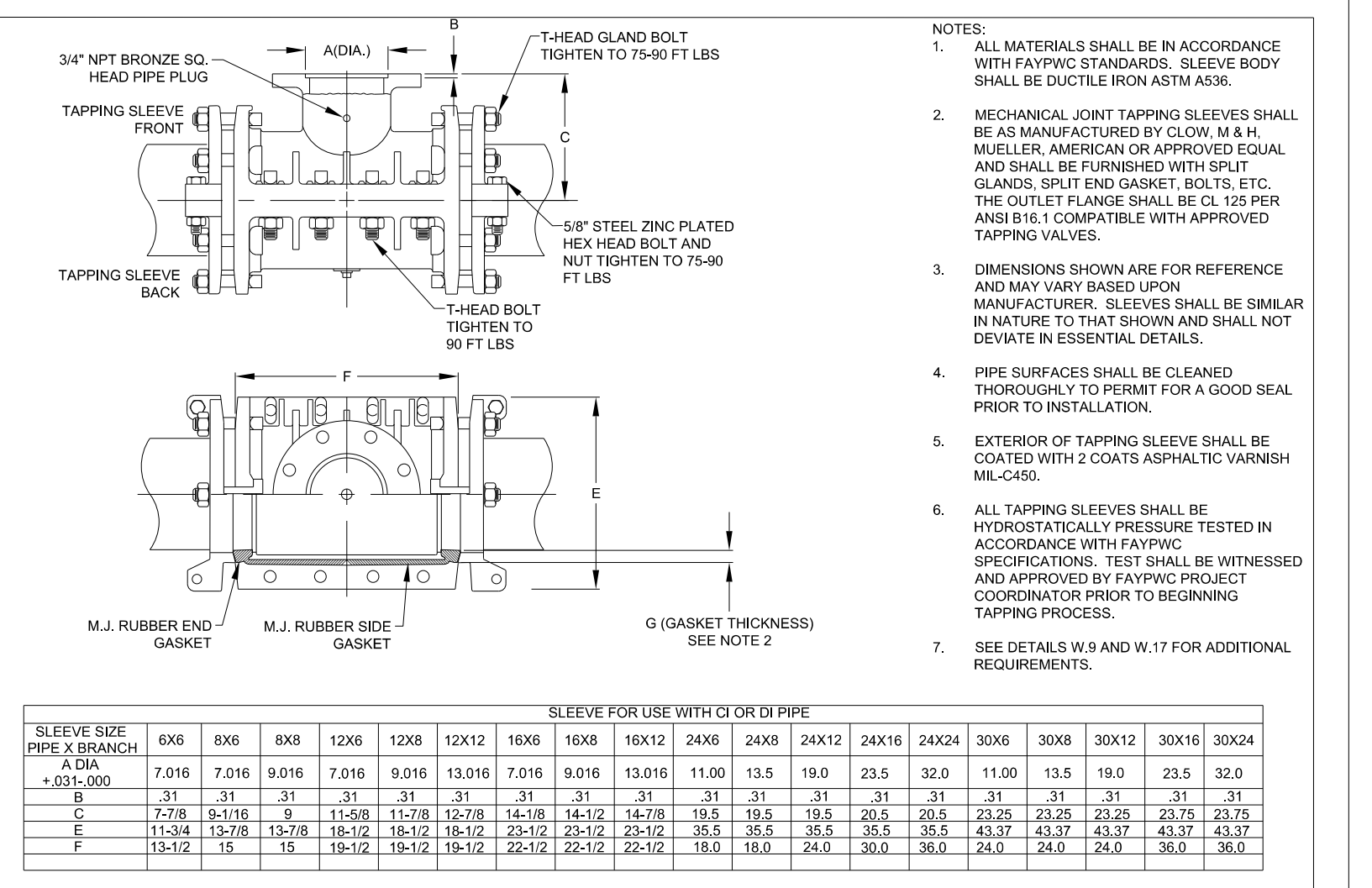
VALVE BOX N.T.S.		FAYETTEVILLE PUBLIC WORKS COMMISSION FAYETTEVILLE, N.C.		NO. DATE REVISION	
DWG. NO. W.7 DWG. BY: FAYPWC		FAYETTEVILLE PUBLIC WORKS COMMISSION ENGINEERING DEPARTMENT		1 07/09 ADDED NOTES 7, 8, AND CLARIFIED NOTES	
SHEET NO. 1 OF 1	DATE: JULY 01, 2021 APPROVED BY: J.E.G.	FAYETTEVILLE PUBLIC WORKS COMMISSION ENGINEERING DEPARTMENT		2 01/14 REVISED NOTES 1, 4, 6	



VALVE BOX PROTECTOR RING N.T.S.		FAYETTEVILLE PUBLIC WORKS COMMISSION FAYETTEVILLE, N.C.		NO. DATE REVISION	
DWG. NO. W.8 DWG. BY: FAYPWC		FAYETTEVILLE PUBLIC WORKS COMMISSION ENGINEERING DEPARTMENT		1 07/09 ADDED NOTE 10, REVISED 4 AND 5	
SHEET NO. 1 OF 1	DATE: JULY 01, 2021 APPROVED BY: J.E.G.	FAYETTEVILLE PUBLIC WORKS COMMISSION ENGINEERING DEPARTMENT		2 07/13 REVISED NOTES 4, 8, 10	



TAPPING VALVE N.T.S.		FAYETTEVILLE PUBLIC WORKS COMMISSION FAYETTEVILLE, N.C.		NO. DATE REVISION	
DWG. NO. W.9 DWG. BY: FAYPWC		FAYETTEVILLE PUBLIC WORKS COMMISSION ENGINEERING DEPARTMENT		1 07/09 ADDED NOTE 10, REVISED 4 AND 5	
SHEET NO. 1 OF 1	DATE: JULY 01, 2021 APPROVED BY: J.E.G.	FAYETTEVILLE PUBLIC WORKS COMMISSION ENGINEERING DEPARTMENT		2 07/13 REVISED NOTES 4, 8, 10	



DUCTILE IRON TAPPING SLEEVE N.T.S.		FAYETTEVILLE PUBLIC WORKS COMMISSION FAYETTEVILLE, N.C.		NO. DATE REVISION	
DWG. NO. W.10 DWG. BY: FAYPWC		FAYETTEVILLE PUBLIC WORKS COMMISSION ENGINEERING DEPARTMENT		1 07/09 REVISION NOTE 6, 7	
SHEET NO. 1 OF 1	DATE: JULY 01, 2021 APPROVED BY: J.E.G.	FAYETTEVILLE PUBLIC WORKS COMMISSION ENGINEERING DEPARTMENT		2 07/13 REVISED NOTES 6, 7	

SLEEVE SIZE PIPE X BRANCH	6X6	8X8	8X8	12X8	12X8	12X12	16X8	16X8	16X12	24X8	24X12	24X16	24X24	30X8	30X8	30X12	30X16	30X24
A DIA. +0.01/-0.00	7.016	7.016	9.016	7.016	9.016	13.016	7.016	9.016	13.016	11.000	13.5	19.0	23.5	11.000	13.5	19.0	23.5	32.0
B DIA.	31	31	31	31	31	31	31	31	31	31	31	31	31	31	31	31	31	31
C	7.78	9.116	9	11.508	11.78	12.78	14.18	14.12	14.78	19.5	19.5	19.5	20.5	23.25	23.25	23.25	23.75	23.75
E	11.24	13.78	13.78	18.12	18.12	18.12	23.12	23.12	23.12	35.5	35.5	35.5	35.5	43.37	43.37	43.37	43.37	43.37
F	13.12	15	15	19.12	19.12	19.12	26.12	26.12	26.12	19.0	19.0	24.0	30.0	24.0	24.0	24.0	30.0	30.0