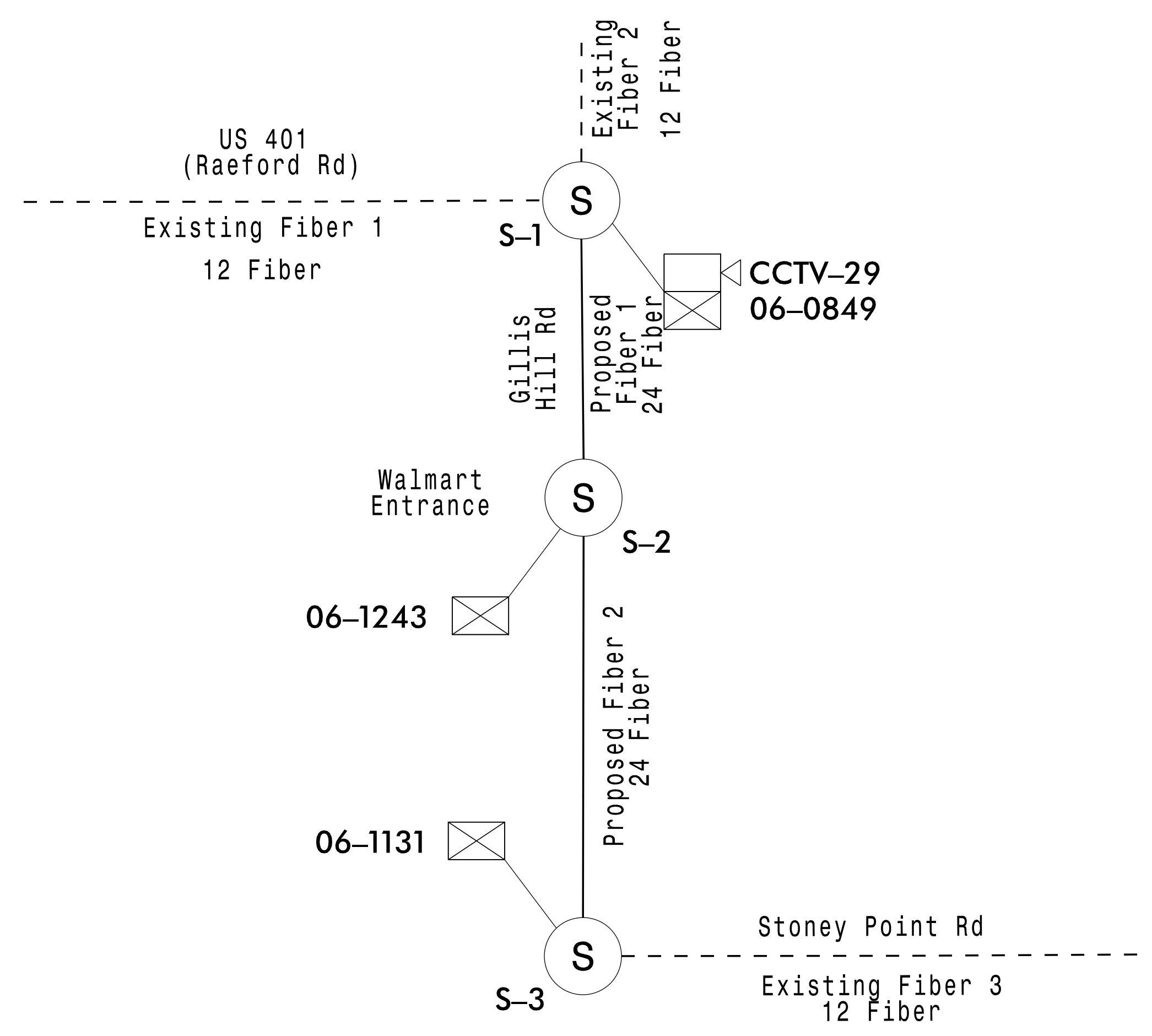


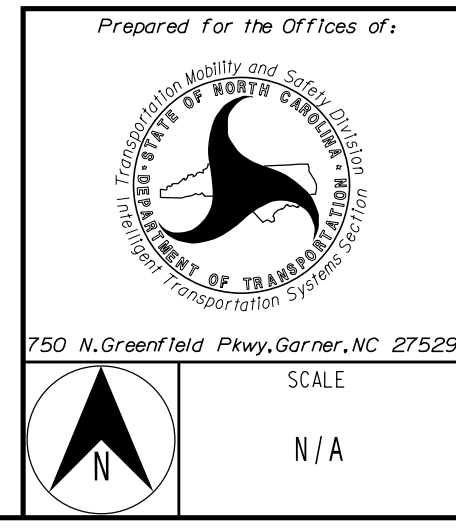
# FIBER-OPTIC SCHEMATIC



LEGEND	
	CABLE-TO-CABLE SPLICE
	12 FIBER DROP SPLICE TO SIGNAL CABINET
	12 FIBER DROP SPLICE TO SIGNAL CABINET/CCTV
	NEW FIBER-OPTIC CABLE
	EXISTING FIBER-OPTIC CABLE
S-###	SPLICE NUMBER
06-####	STATE SIGNAL INVENTORY NUMBER

05-Jan-22 12:26:50  
 R:\IT\Projects\GMP\03 - Submittal\U-5798A\scop3.dgn  
 12:26:50

**DOCUMENT NOT CONSIDERED FINAL  
UNLESS ALL SIGNATURES COMPLETED**



Prepared For the Offices of:		
<b>Gillis Hill Road Widening Fiber-Optic Schematic</b>		
Division 6	Cumberland County	Fayetteville
PLAN DATE: January 2022	REVIEWED BY: S.G. Haynie	
PREPARED BY: O. Drobny	REVIEWED BY: V. Kaiser	
REVISIONS	INIT.	DATE

SEAL
Drawn by: <u>Steven G. Haynie</u> 1/5/2022 Signature: _____      DATE: _____ CADD Filename: U5798A_sig_scp_03.dgn