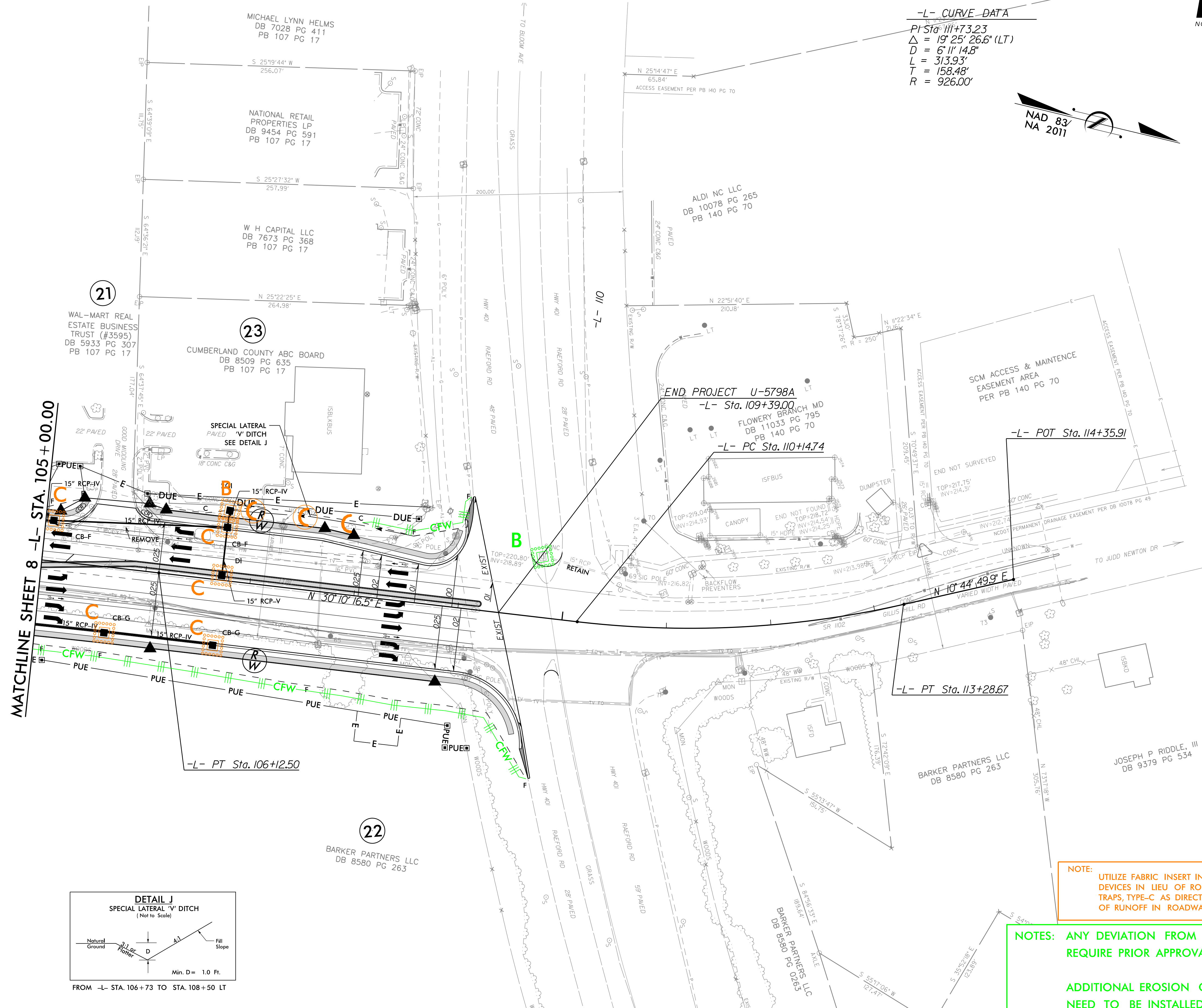


**-L- CURVE DATA**  
 PI Sta. 111+73.23  
 $\Delta = 19^{\circ} 25' 26.6" (LT)$   
 $D = 6' 11" 14.8"$   
 $L = 313.93'$   
 $T = 158.48'$   
 $R = 926.00'$



MATCHLINE SHEET 8 -L- STA. 105+00.00

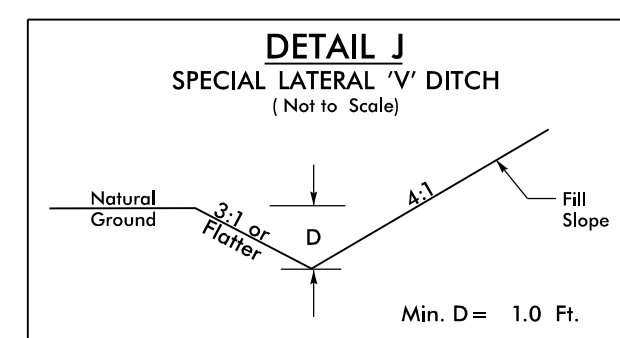
END PROJECT U-5798A  
-L- Sta. 109+39.00

-L- PC Sta. 110+14.74

-L- POT Sta. 114+35.91

-L- PT Sta. 113+28.67

-L- PT Sta. 106+12.50



FROM -L- STA. 106+73 TO STA. 108+50 LT

**NOTE:** UTILIZE FABRIC INSERT INLET PROTECTION DEVICES IN LIEU OF ROCK INLET SEDIMENT TRAPS, TYPE-C AS DIRECTED TO AVOID IMPOUNDMENT OF RUNOFF IN ROADWAY OPEN TO TRAFFIC.

**NOTES:** ANY DEVIATION FROM OPTIONS GIVEN WILL REQUIRE PRIOR APPROVAL BY ENGINEER.  
  
ADDITIONAL EROSION CONTROL DEVICES MAY NEED TO BE INSTALLED AS DIRECTED BY THE ENGINEER.

8/17/99  
24-NOV-2021 12:01  
R:\E:\M\151\Design\Plan\_Sheets\U-5798A\_psh\_EC-15.dgn  
\$\$\$\$\$USERNAME\$\$\$\$\$