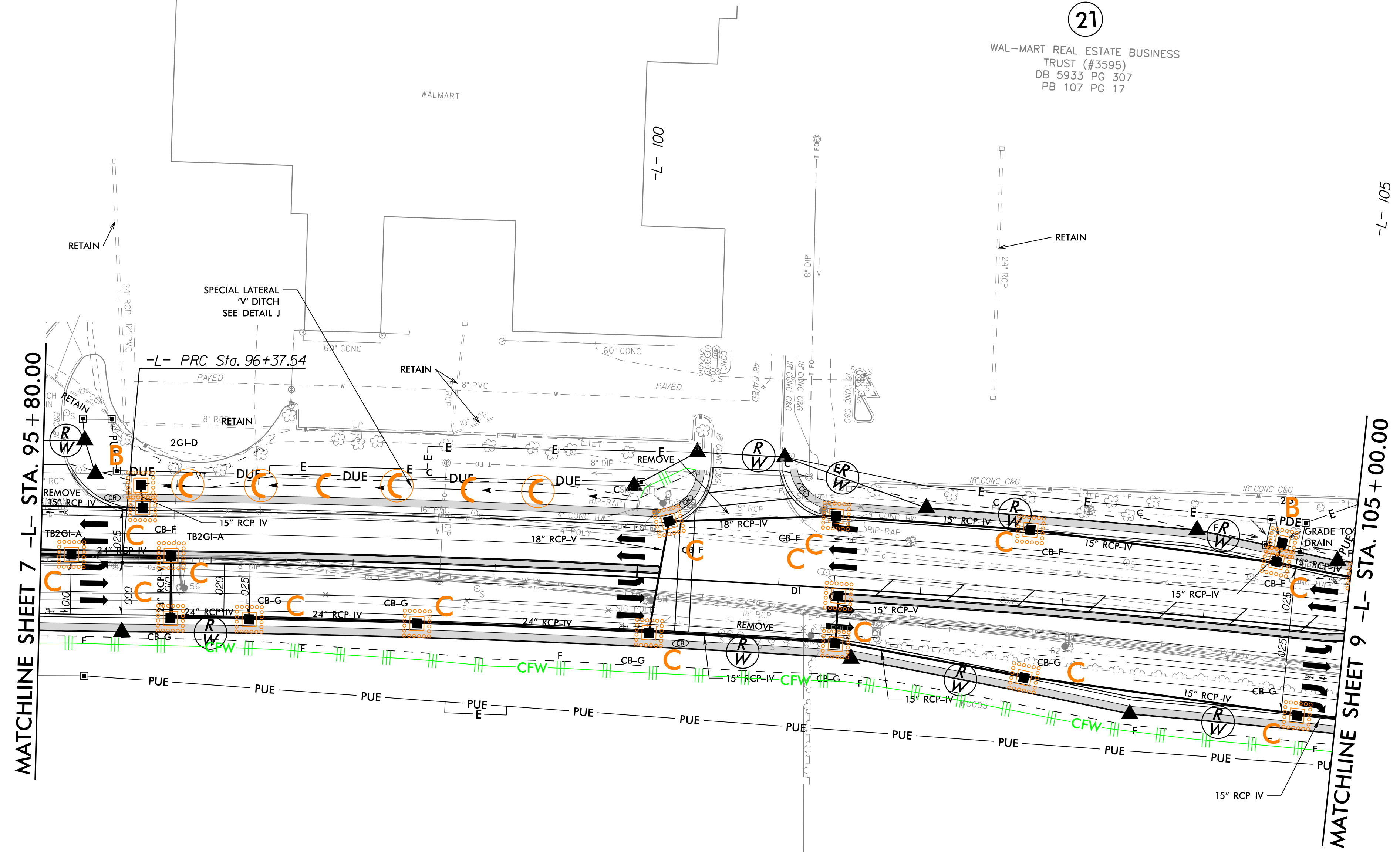


-L- CURVE DATA

PI Sta 93+91.02	PI Sta 101+25.50
$\Delta = 8' 17' 55.2''$ (LT)	$\Delta = 6' 12' 24.4''$ (RT)
$D = 1' 40' 48.8''$	$D = 0' 38' 11.8''$
$L = 493.90'$	$L = 974.96'$
$T = 247.38'$	$T = 487.96'$
$R = 3,410.00'$	$R = 9,000.00'$
SE = RC	SE = NC

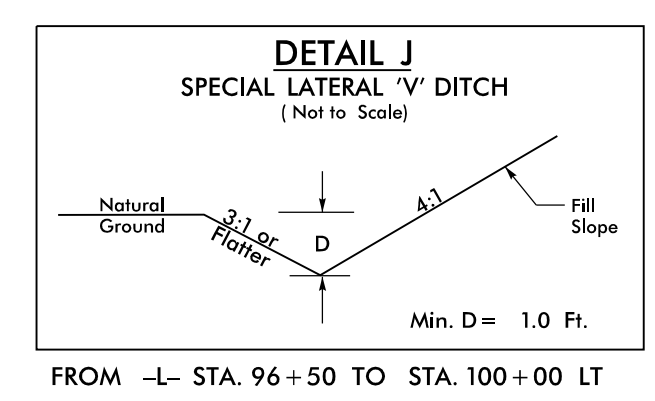


MATCHLINE SHEET 7 -L- STA. 95 + 80.00

MATCHLINE SHEET 9 -L- STA. 105 + 00.00

19
JOHN D GILLIS
DB 5280 PG 386
PB 94 PG 13

22
BARKER PARTNERS LLC
DB 8580 PG 263



NOTE: UTILIZE FABRIC INSERT INLET PROTECTION DEVICES IN LIEU OF ROCK INLET SEDIMENT TRAPS, TYPE-C AS DIRECTED TO AVOID IMPOUNDMENT OF RUNOFF IN ROADWAY OPEN TO TRAFFIC.

NOTES: ANY DEVIATION FROM OPTIONS GIVEN WILL REQUIRE PRIOR APPROVAL BY ENGINEER.

ADDITIONAL EROSION CONTROL DEVICES MAY NEED TO BE INSTALLED AS DIRECTED BY THE ENGINEER.

8/17/99
24-NOV-2021 11:58
R:\E:\M\Projects\14\Design\Plan_Sheets\U-5798A_psh_EC-14.dgn
\$\$\$\$\$