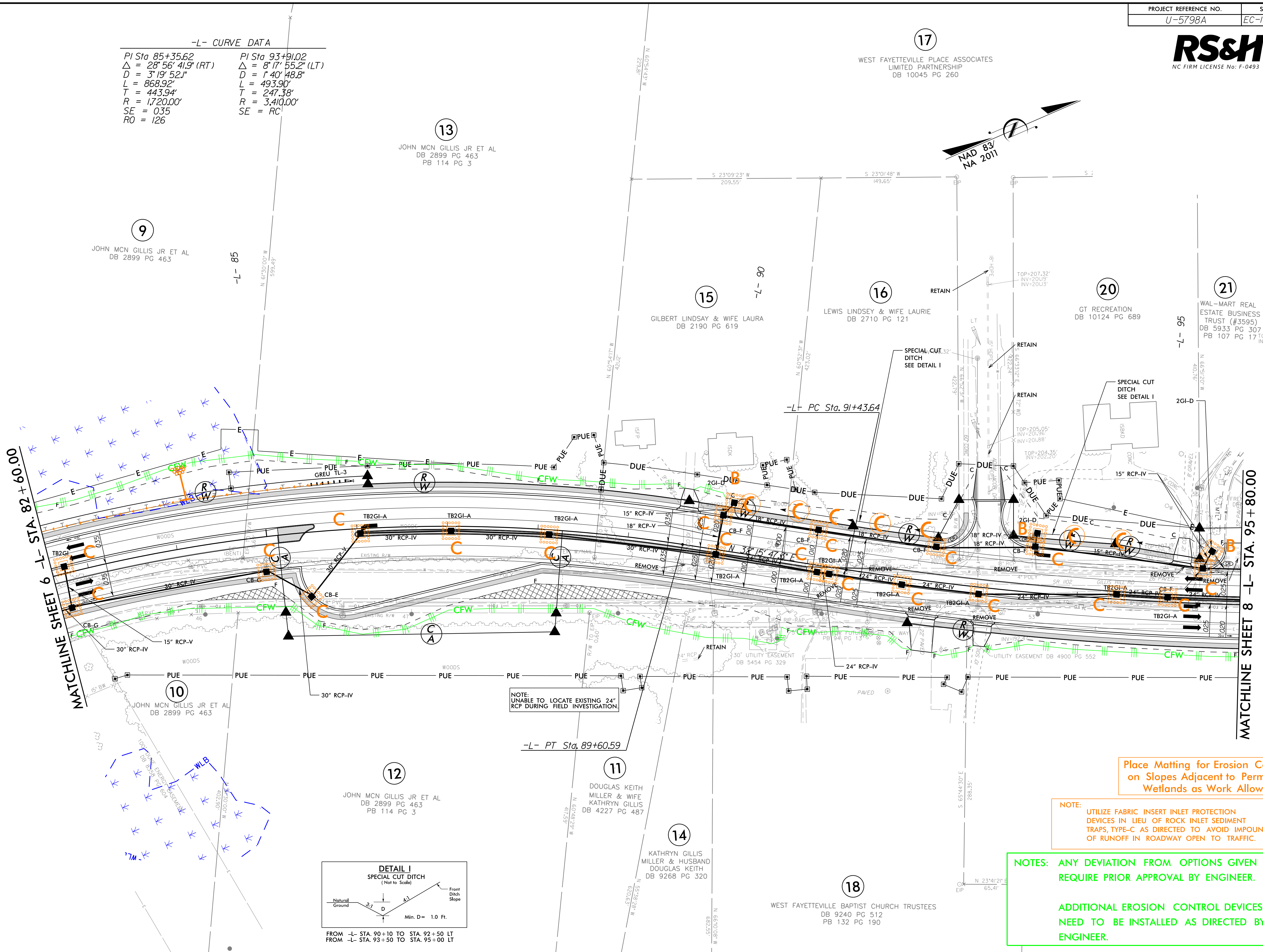
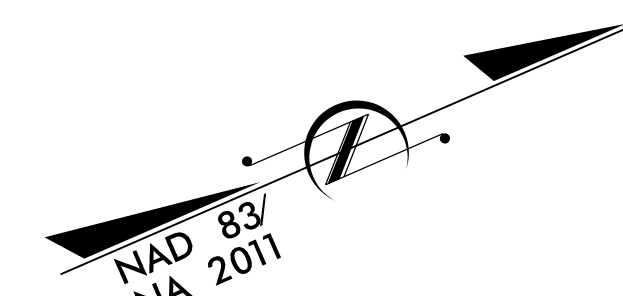


WEST FAYETTEVILLE PLACE ASSOCIATES  
LIMITED PARTNERSHIP  
DB 10045 PG 260

-L- CURVE DATA

|                                    |                                   |
|------------------------------------|-----------------------------------|
| PI Sta 85+35.62                    | PI Sta 93+91.02                   |
| $\Delta = 28^{\circ}56'41.9"$ (RT) | $\Delta = 8^{\circ}17'55.2"$ (LT) |
| D = 3'19'52.1"                     | D = 1'40'48.8"                    |
| L = 868.92'                        | L = 493.90'                       |
| T = 443.94'                        | T = 247.38'                       |
| R = 1,720.00'                      | R = 3,410.00'                     |
| SE = 035                           | SE = RC                           |
| RO = 126                           |                                   |



MATCHLINE SHEET 6 -L- STA. 82+60.00

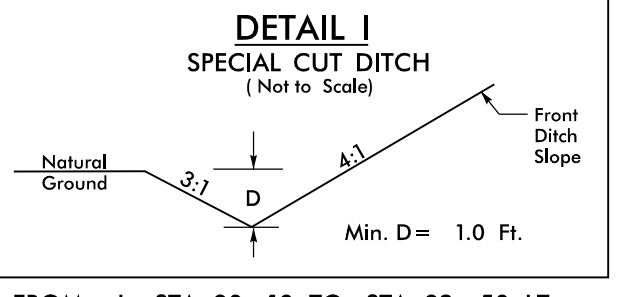
MATCHLINE SHEET 8 -L- STA. 95+80.00

NOTE: UNABLE TO LOCATE EXISTING 24" RCP DURING FIELD INVESTIGATION.

Place Matting for Erosion Control on Slopes Adjacent to Permitted Wetlands as Work Allows.

NOTE: UTILIZE FABRIC INSERT INLET PROTECTION DEVICES IN LIEU OF ROCK INLET SEDIMENT TRAPS, TYPE-C AS DIRECTED TO AVOID IMPOUNDMENT OF RUNOFF IN ROADWAY OPEN TO TRAFFIC.

NOTES: ANY DEVIATION FROM OPTIONS GIVEN WILL REQUIRE PRIOR APPROVAL BY ENGINEER.  
ADDITIONAL EROSION CONTROL DEVICES MAY NEED TO BE INSTALLED AS DIRECTED BY THE ENGINEER.



FROM -L- STA. 90+10 TO STA. 92+50 LT  
FROM -L- STA. 93+50 TO STA. 95+00 LT

8.17/99  
24-NOV-2021 10:57  
R:\1\Projects\5798A\Design\Plan\_Sheets\U-5798A\_psh\_EC-13.dgn  
\$\$\$\$\$