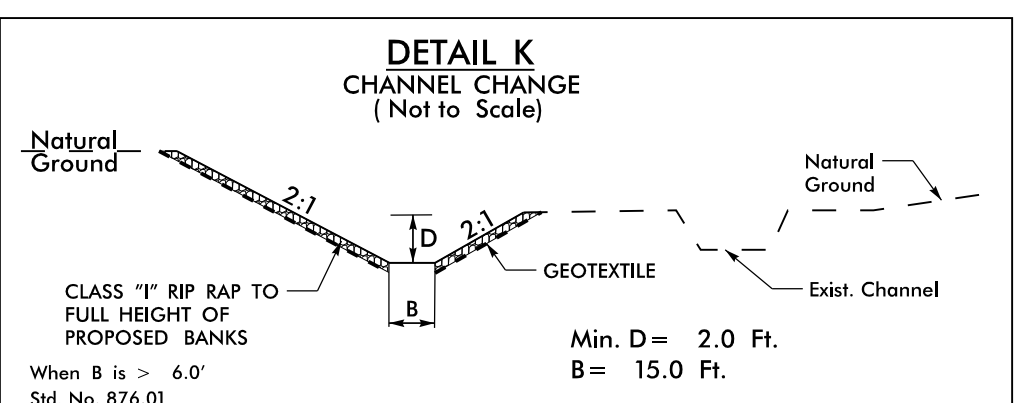


**-L- CURVE DATA**

PI Sta 62+27.11	PI Sta 85+35.62
$\Delta = 13^{\circ} 43' 19.0''$ (LT)	$\Delta = 28^{\circ} 56' 41.9''$ (RT)
D = 0' 47' 36.9"	D = 3' 19' 52.1"
L = 1729.14'	L = 868.92'
T = 868.73'	T = 443.94'
R = 7220.00'	R = 1720.00'
SE = NC	SE = 035
	RO = 126



FROM -L- STA. 76+47 LT TO STA. 77+25 RT  
EST. 456 TONS CL #1 RIP RAP  
EST. 643 SY GEOTEXTILE  
EST. 910 CY DDE



9

JOHN MCN GILLIS JR ET AL  
DB 2899 PG 463

6  
M D GILLIS C/O  
JUDY GILLIS DIBACCO  
DB 2584 PG 0783

8  
MALCOLM D GILLIS HEIRS  
JUDY GILLIS MCKETHAN  
DB 451 PG 548

MATCHLINE SHEET 5 -L- STA. 69 + 35.00

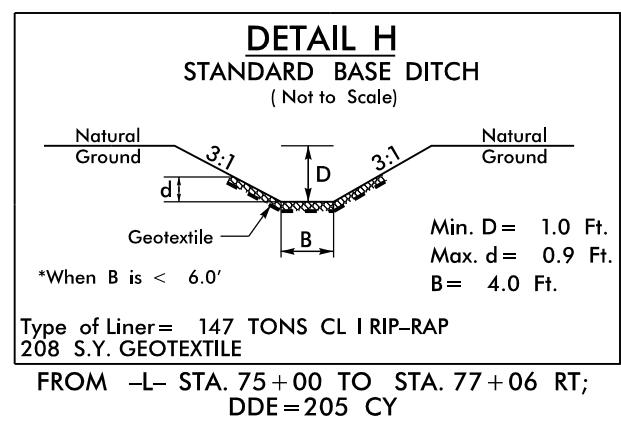
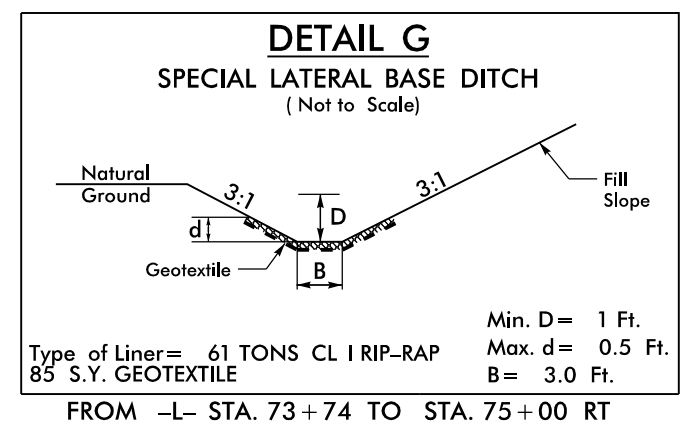
MATCHLINE SHEET 7 -L- STA. 82 + 60.00

7  
M D GILLIS C/O  
JUDY GILLIS DIBACCO  
DB 2584 PG 0783

-L- PT Sta. 70+87.52

5  
JOHN D GILLIS  
DB 5280 PG 386  
PB 51 PG 32

10  
JOHN MCN GILLIS JR ET AL  
DB 2899 PG 463

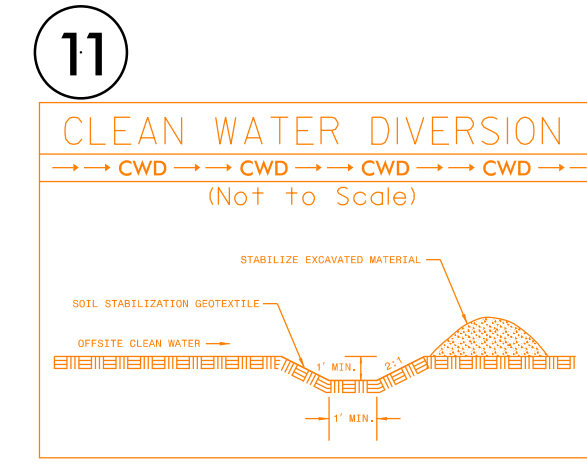


EST 7 TON CL 1 RIP RAP  
EST 15 SY GEOTEXTILE

CHANNEL RELOCATION EXCAVATION SHALL BE PERFORMED IN ONLY DRY OR ISOLATED AREAS OF THE WORK ZONE. UTILIZE IMPERVIOUS DIKES, PUMPS, AND HOSES TO ISOLATE WORK FROM STREAM FLOW WHEN NECESSARY. INSTALL RIP RAP AROUND PROPOSED COLUMNS AND CONSTRUCT CHANNEL BLOCK.

Place Matting for Erosion Control on Slopes Adjacent to Permitted Wetlands as Work Allows.

Place Matting for Erosion Control on Slope as Work Allows. Sta. 73+05 to Sta. 75+74 RT Sta. 78+14 to Sta. 79+25 RT Sta. 78+14 to Sta. 85+75 LT



NOTE: UTILIZE FABRIC INSERT INLET PROTECTION DEVICES IN LIEU OF ROCK INLET SEDIMENT TRAPS, TYPE-C AS DIRECTED TO AVOID IMPOUNDMENT OF RUNOFF IN ROADWAY OPEN TO TRAFFIC.

NOTE: UTILIZE TEMPORARY SEDIMENT BASIN OR SPECIAL STILLING BASIN(S) AS STILLING BASIN WHERE APPLICABLE.

NOTES: ANY DEVIATION FROM OPTIONS GIVEN WILL REQUIRE PRIOR APPROVAL BY ENGINEER. ADDITIONAL EROSION CONTROL DEVICES MAY NEED TO BE INSTALLED AS DIRECTED BY THE ENGINEER.

24-NOV-2021 11:57 P:\Projects\2021\5798A\Design\Plan\_Sheets\U-5798A\_psh\_EC-12.dgn