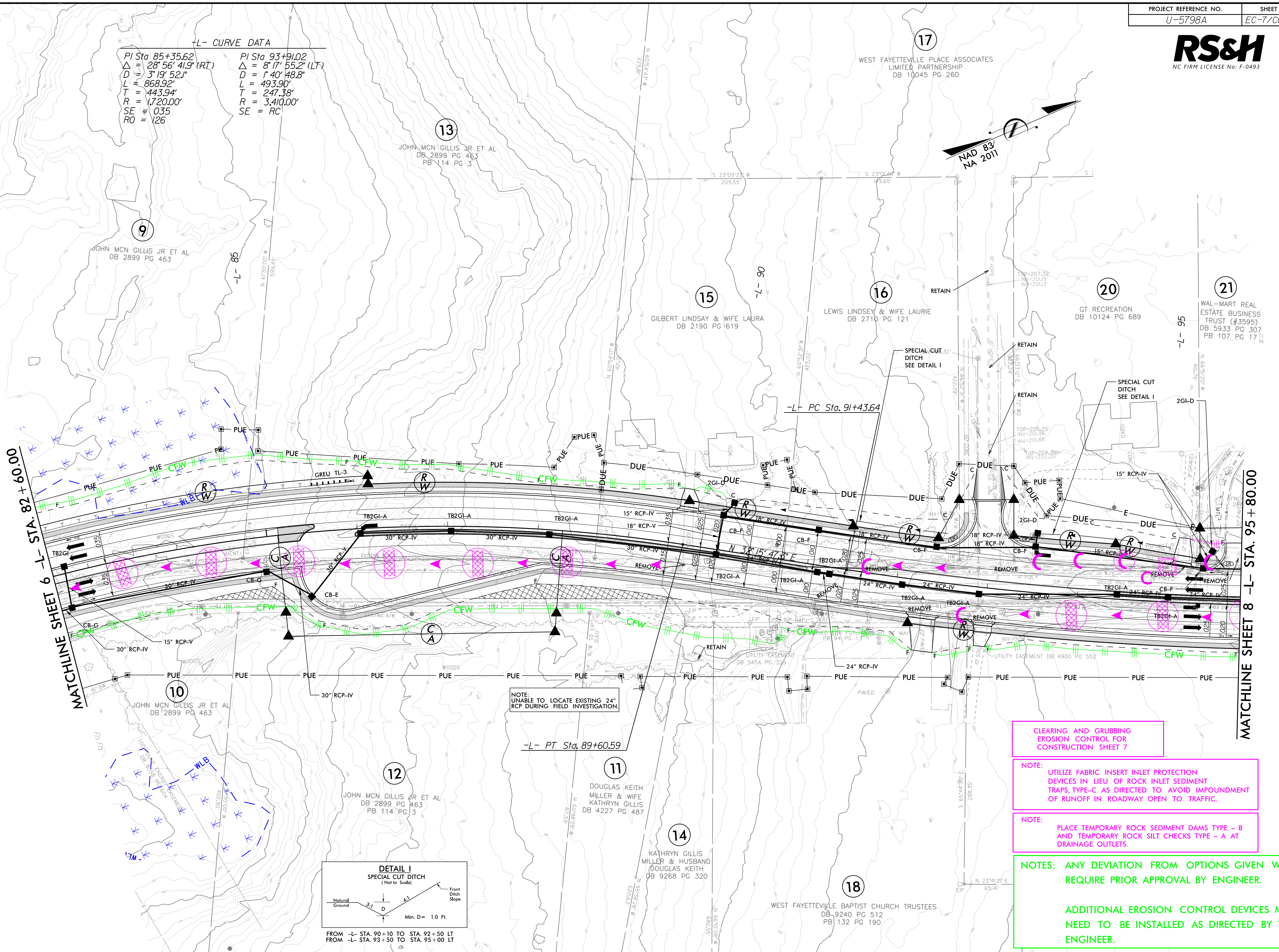
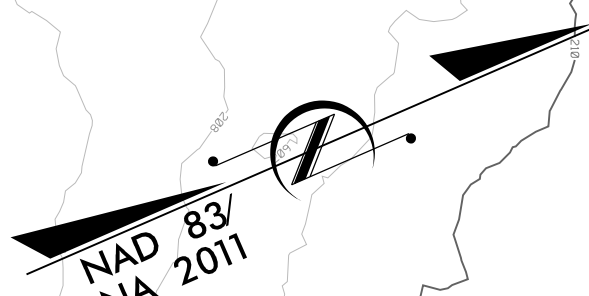


L- CURVE DATA

PI Sta 85+35.62	PI Sta 93+91.02
$\Delta = 28^{\circ}56'41.9"$ (RT)	$\Delta = 8^{\circ}17'55.2"$ (LT)
D = 3' 19' 52.1"	D = 1' 40' 48.8"
L = 868.92'	L = 493.90'
T = 443.94'	T = 247.38'
R = 1,720.00'	R = 3,410.00'
SE = 035	SE = RC
RO = 126	



MATCHLINE SHEET 6 -L- STA. 82+60.00

MATCHLINE SHEET 8 -L- STA. 95+80.00

NOTE: UNABLE TO LOCATE EXISTING 24" RCP DURING FIELD INVESTIGATION.

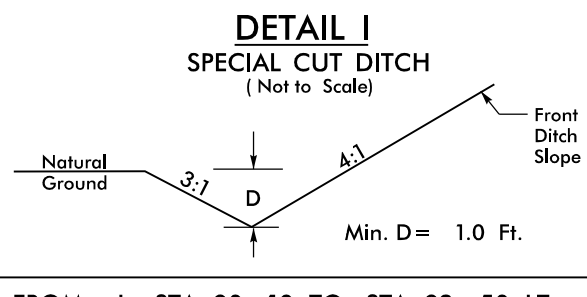
CLEARING AND GRUBBING EROSION CONTROL FOR CONSTRUCTION SHEET 7

NOTE: UTILIZE FABRIC INSERT INLET PROTECTION DEVICES IN LIEU OF ROCK INLET SEDIMENT TRAPS, TYPE-C AS DIRECTED TO AVOID IMPOUNDMENT OF RUNOFF IN ROADWAY OPEN TO TRAFFIC.

NOTE: PLACE TEMPORARY ROCK SEDIMENT DAMS TYPE - B AND TEMPORARY ROCK SILT CHECKS TYPE - A AT DRAINAGE OUTLETS.

NOTES: ANY DEVIATION FROM OPTIONS GIVEN WILL REQUIRE PRIOR APPROVAL BY ENGINEER.

ADDITIONAL EROSION CONTROL DEVICES MAY NEED TO BE INSTALLED AS DIRECTED BY THE ENGINEER.



8.17.19
02-FEB-2022 08:27
R3-F:\Projects\2022\Design\Plan_Sheets\U-5798A_psh_EC-7.dgn
RS&H