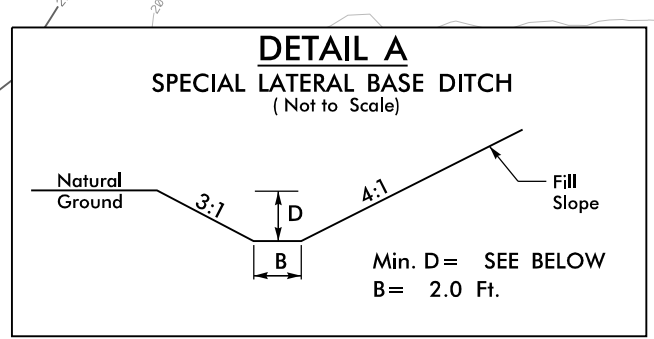
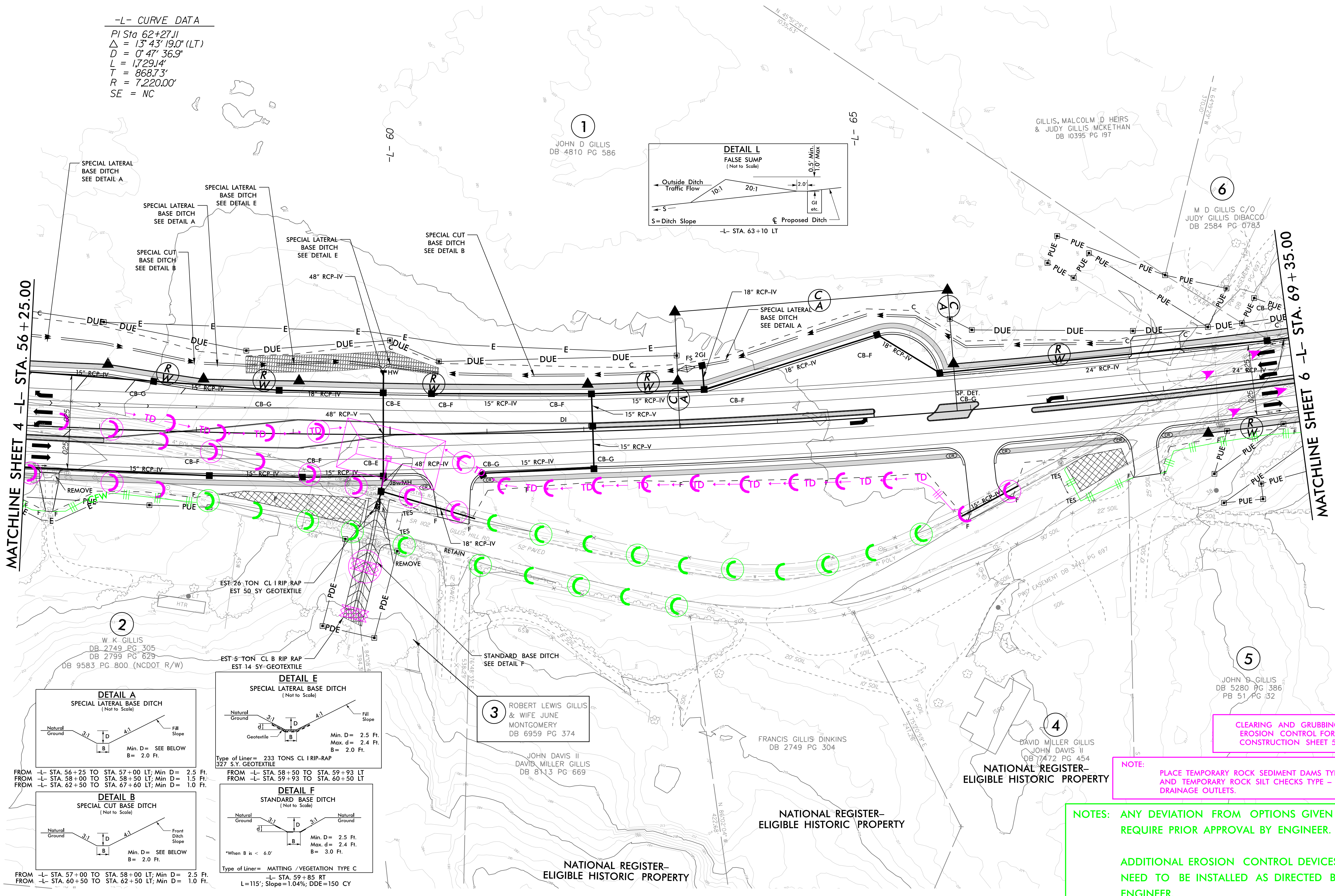
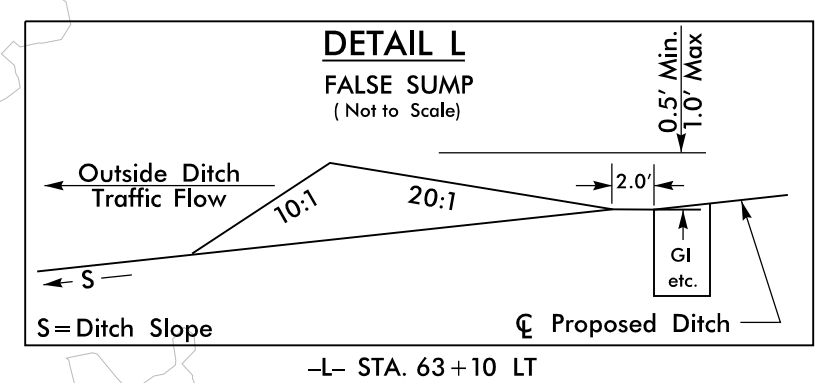
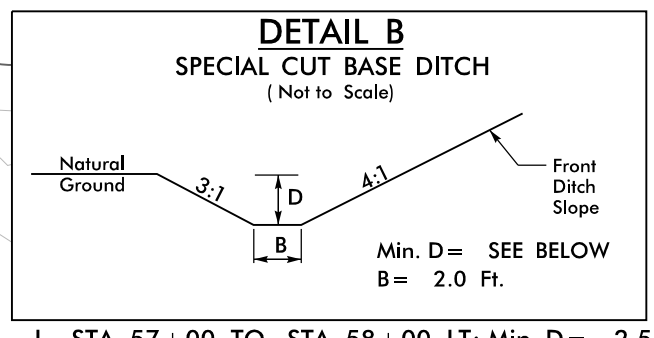


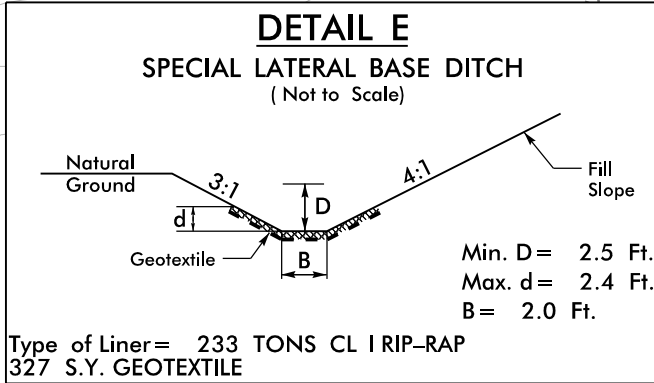
-L- CURVE DATA
 PI Sta 62+27.11
 $\Delta = 13^{\circ} 43' 19.0''$ (LT)
 $D = 0' 47' 36.9''$
 $L = 1729.14'$
 $T = 868.73'$
 $R = 7,220.00'$
 SE = NC



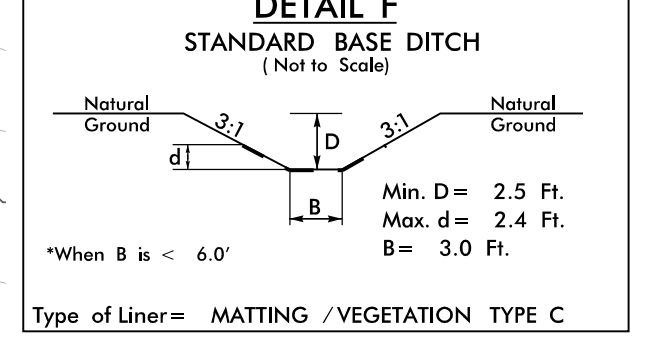
FROM -L- STA. 56+25 TO STA. 57+00 LT; Min D= 2.5 Ft.
 FROM -L- STA. 58+00 TO STA. 58+50 LT; Min D= 1.5 Ft.
 FROM -L- STA. 62+50 TO STA. 67+60 LT; Min D= 1.0 Ft.



FROM -L- STA. 57+00 TO STA. 58+00 LT; Min D= 2.5 Ft.
 FROM -L- STA. 60+50 TO STA. 62+50 LT; Min D= 1.0 Ft.



FROM -L- STA. 58+50 TO STA. 59+93 LT
 FROM -L- STA. 59+93 TO STA. 60+50 LT



Type of Liner = MATTING / VEGETATION TYPE C
 L=115'; Slope=1.04%; DDE=150 CY

CLEARING AND GRUBBING EROSION CONTROL FOR CONSTRUCTION SHEET 5

NOTE: PLACE TEMPORARY ROCK SEDIMENT DAMS TYPE - B AND TEMPORARY ROCK SILT CHECKS TYPE - A AT DRAINAGE OUTLETS.

NOTES: ANY DEVIATION FROM OPTIONS GIVEN WILL REQUIRE PRIOR APPROVAL BY ENGINEER.

ADDITIONAL EROSION CONTROL DEVICES MAY NEED TO BE INSTALLED AS DIRECTED BY THE ENGINEER.

24-NOV-2021/146
 R:\E:\MONTGOMERY\1\Design\Plan Sheets\U-5798A_psh_EC-5.dgn
 \$\$\$\$
 8/17/99