

5/28/99

PROJECT REFERENCE NO. U-5798A	SHEET NO. 11
ROADWAY DESIGN ENGINEER	HYDRAULICS ENGINEER

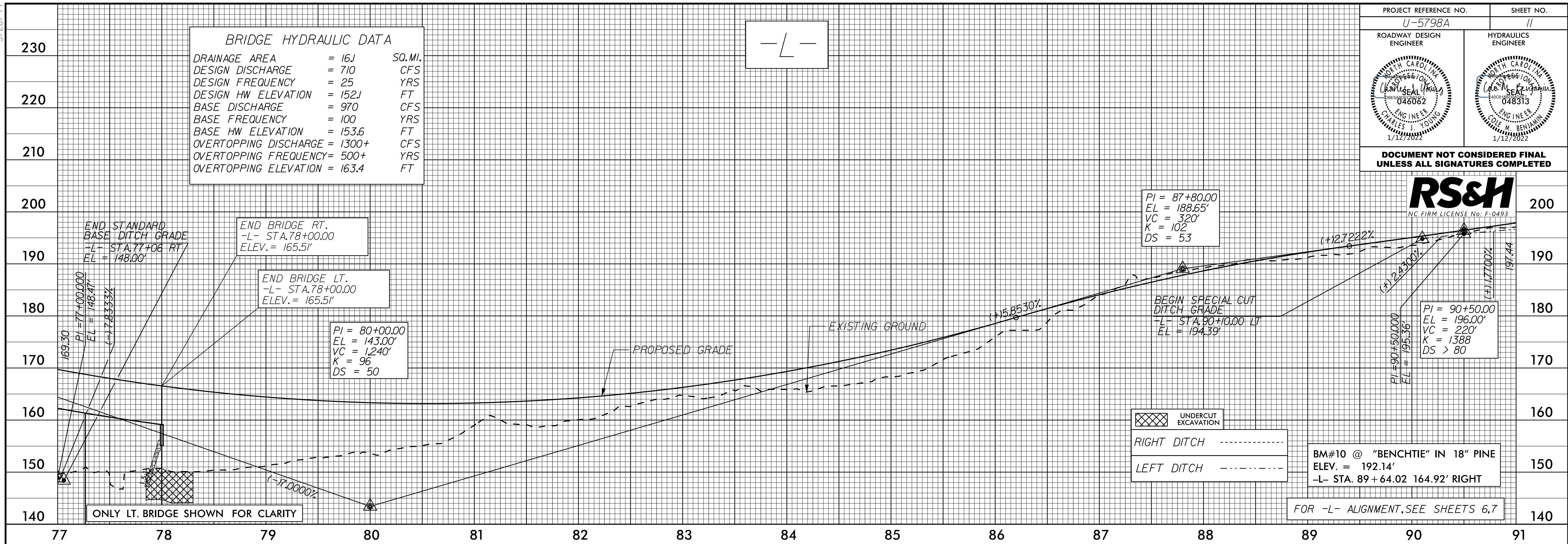
DOCUMENT NOT CONSIDERED FINAL UNLESS ALL SIGNATURES COMPLETED



BRIDGE HYDRAULIC DATA

DRAINAGE AREA	= 16.1	SQ. MI.
DESIGN DISCHARGE	= 710	CFS
DESIGN FREQUENCY	= 25	YRS
DESIGN HW ELEVATION	= 152.1	FT
BASE DISCHARGE	= 970	CFS
BASE FREQUENCY	= 100	YRS
BASE HW ELEVATION	= 153.6	FT
OVERTOPPING DISCHARGE	= 1300+	CFS
OVERTOPPING FREQUENCY	= 500+	YRS
OVERTOPPING ELEVATION	= 163.4	FT

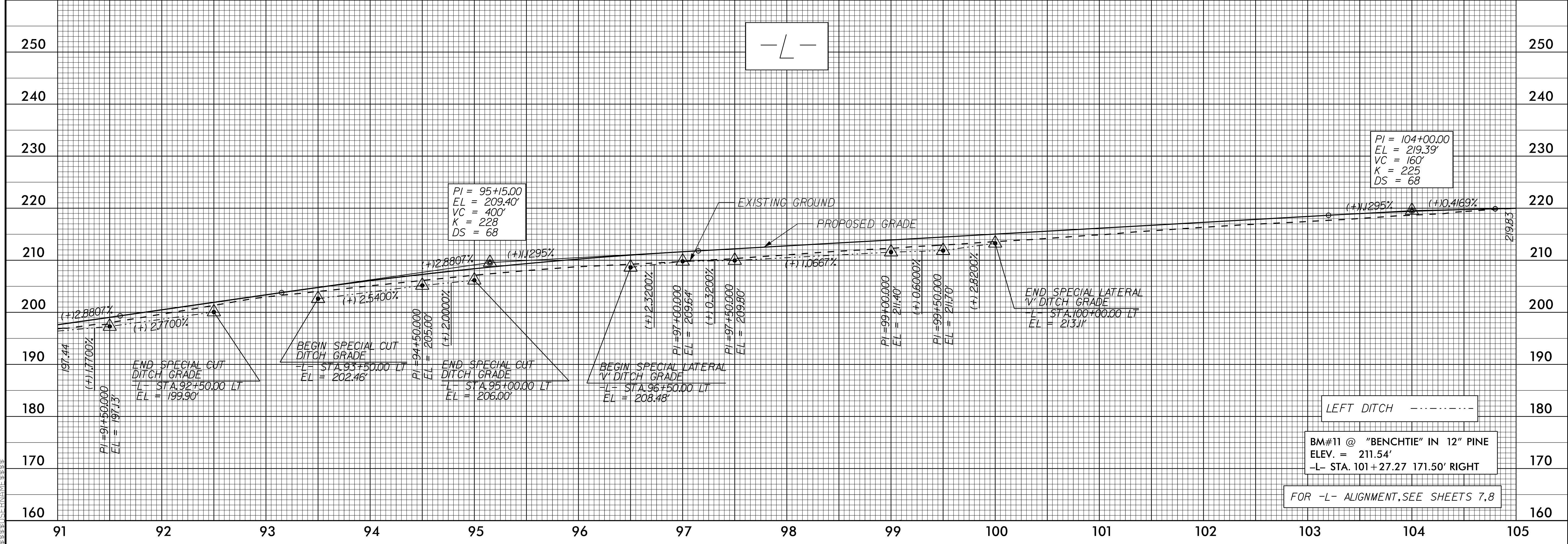
-L-



ONLY LT. BRIDGE SHOWN FOR CLARITY

FOR -L- ALIGNMENT, SEE SHEETS 6,7

-L-



LEFT DITCH -----

BM#11 @ "BENCHTIE" IN 12" PINE
ELEV. = 211.54'
-L- STA. 101+27.27 171.50' RIGHT

FOR -L- ALIGNMENT, SEE SHEETS 7,8

C:\ANU-2002\1612...U-5798A\U-5798A_Rdy.plt.dgn