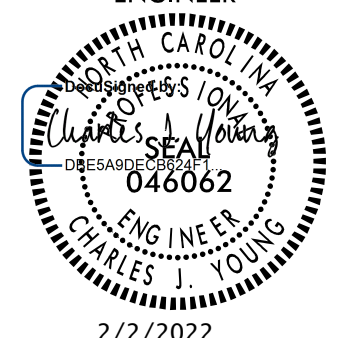
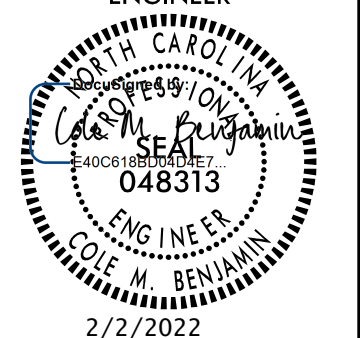
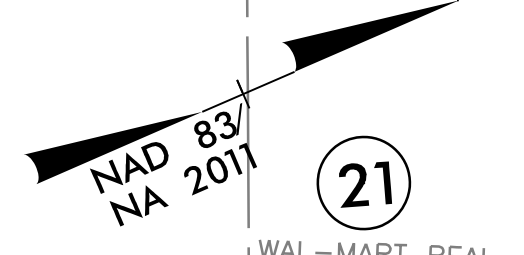
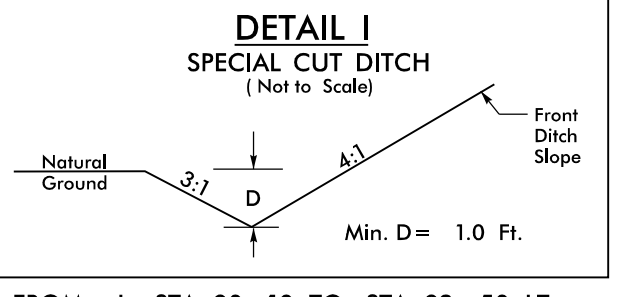
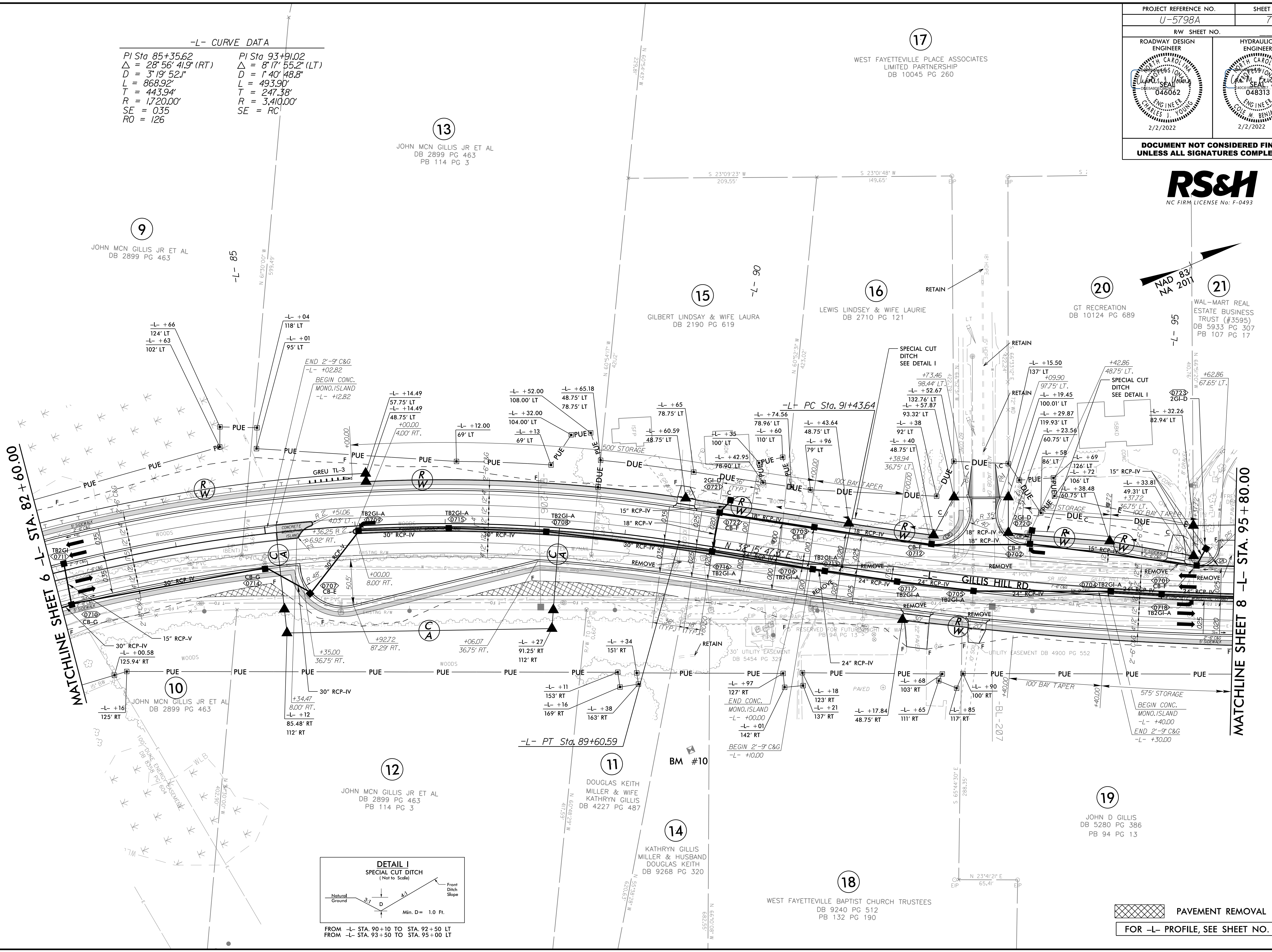


PROJECT REFERENCE NO. <b>U-5798A</b>	SHEET NO. <b>7</b>
RW SHEET NO.	
ROADWAY DESIGN ENGINEER 	HYDRAULICS ENGINEER 
DOCUMENT NOT CONSIDERED FINAL UNLESS ALL SIGNATURES COMPLETED	



**-L- CURVE DATA**

PI Sta 85+35.62	PI Sta 93+91.02
$\Delta = 28^\circ 56' 41.9''$ (RT)	$\Delta = 8^\circ 17' 55.2''$ (LT)
D = 3' 9" 5.21"	D = 1' 40" 48.8"
L = 868.92'	L = 493.90'
T = 443.94'	T = 247.38'
R = 1,720.00'	R = 3,410.00'
SE = 035	SE = RC'
RO = 126	



 PAVEMENT REMOVAL  
FOR -L- PROFILE, SEE SHEET NO. 11

8.17.19  
02-FEB-2022 07:35  
R:\Projects\U-5798A\U-5798A\_Rdy\_psh\_7.dgn