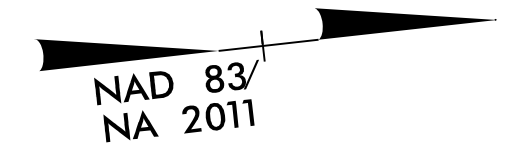
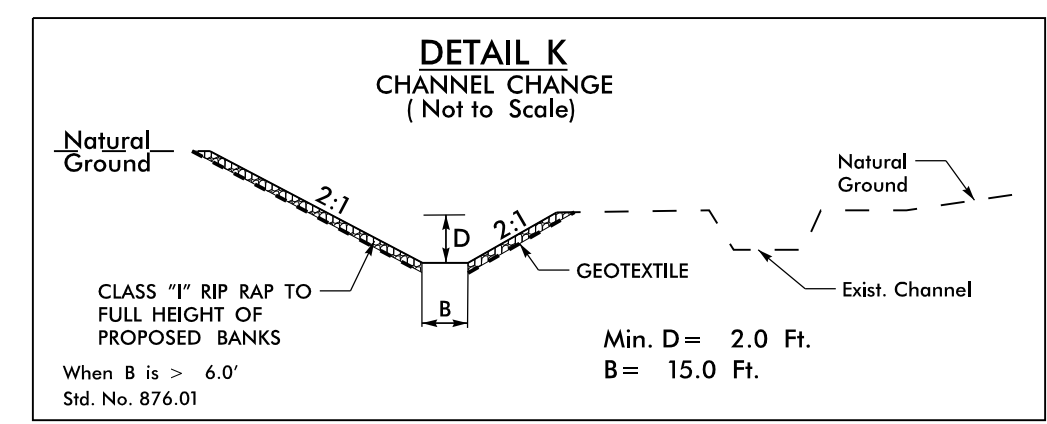


PROJECT REFERENCE NO. U-5798A		SHEET NO. 6	
ROADWAY DESIGN ENGINEER		HYDRAULICS ENGINEER	
DOCUMENT NOT CONSIDERED FINAL UNLESS ALL SIGNATURES COMPLETED			



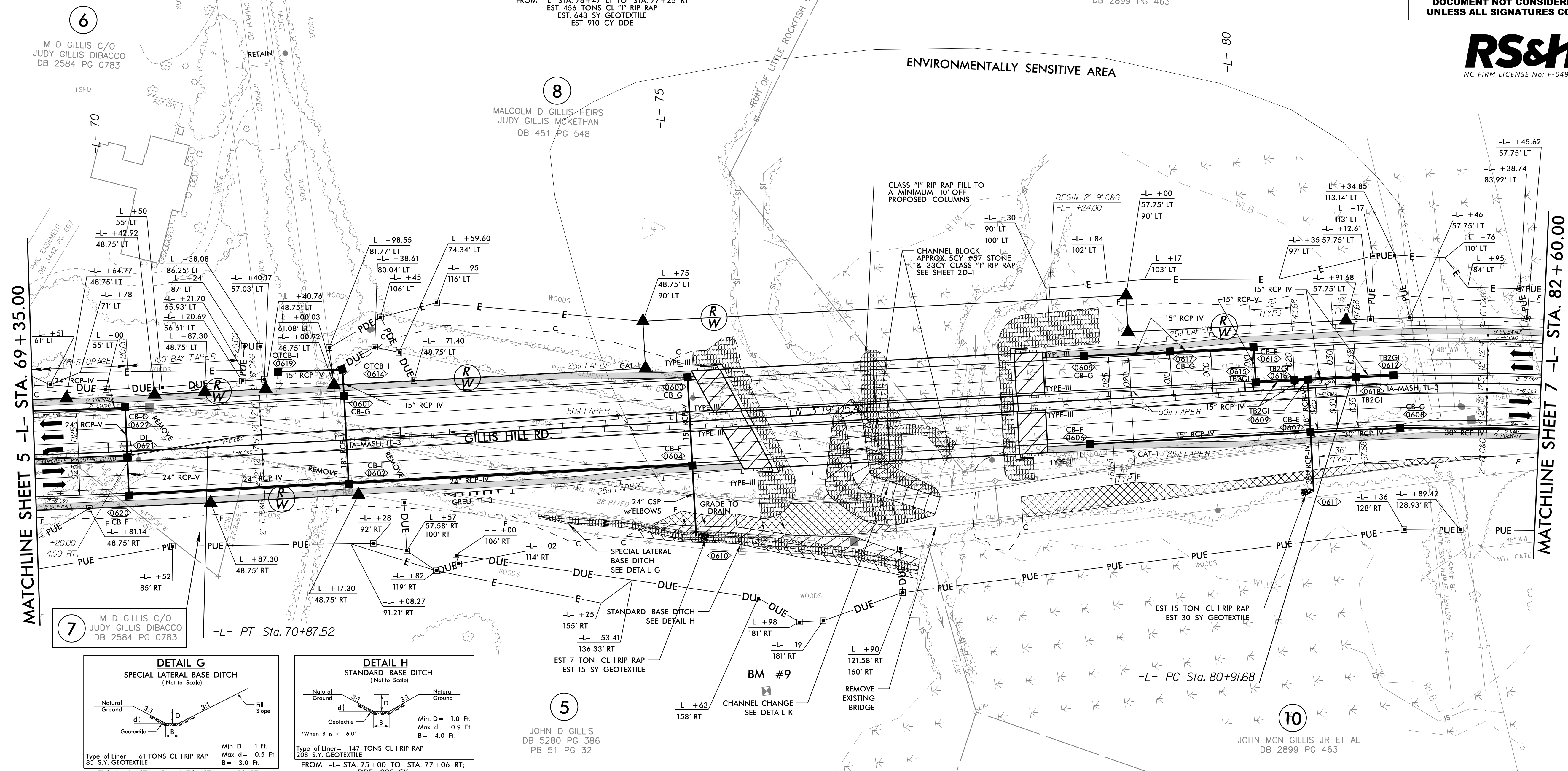
-L- CURVE DATA

PI Sta 62+27.11	PI Sta 85+35.62
$\Delta = 13^{\circ} 43' 19.0''$ (LT)	$\Delta = 28^{\circ} 56' 41.9''$ (RT)
$D = 0^{\circ} 47' 36.9''$	$D = 3^{\circ} 19' 52.1''$
$L = 1729.14'$	$L = 868.92'$
$T = 868.73'$	$T = 443.94'$
$R = 7220.00'$	$R = 1720.00'$
$SE = NC$	$SE = 035$
	$RO = 126$



9

JOHN MCN GILLIS JR ET AL  
DB 2899 PG 463



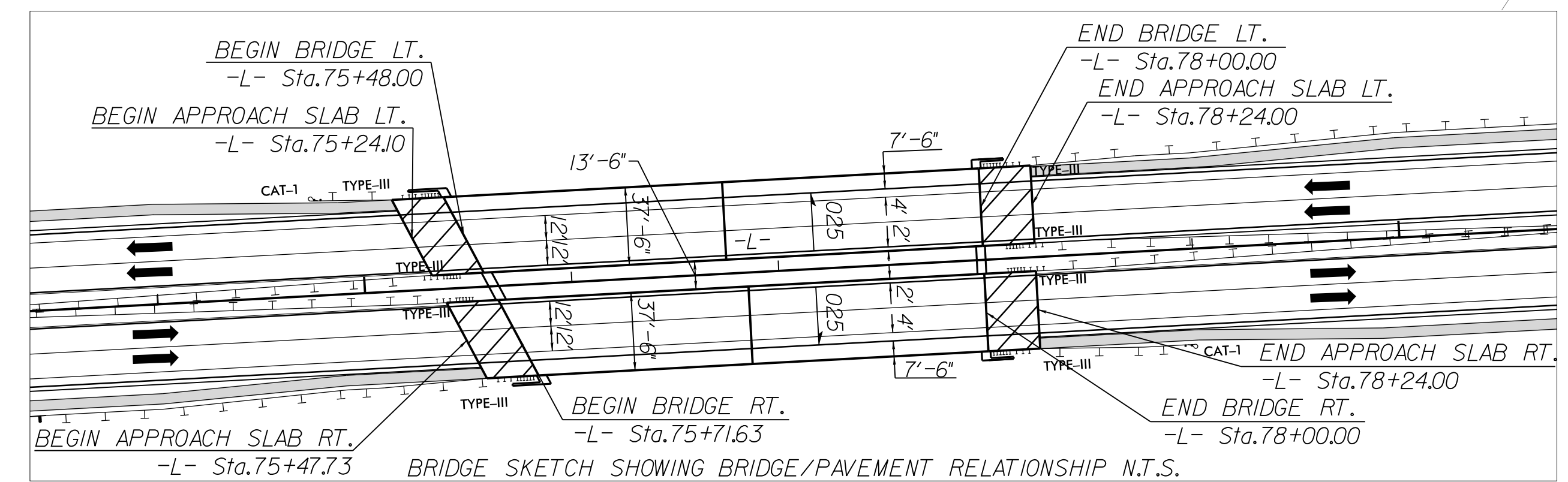
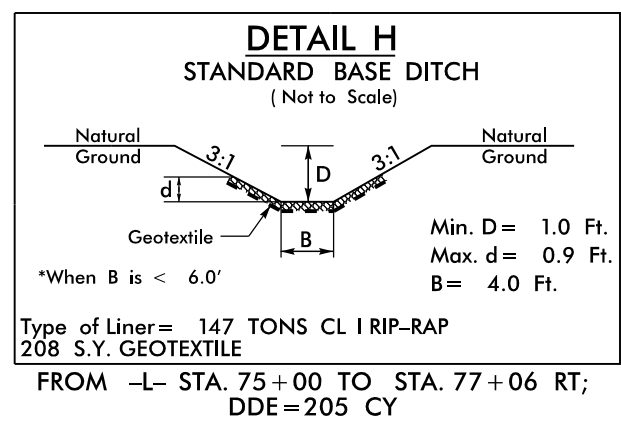
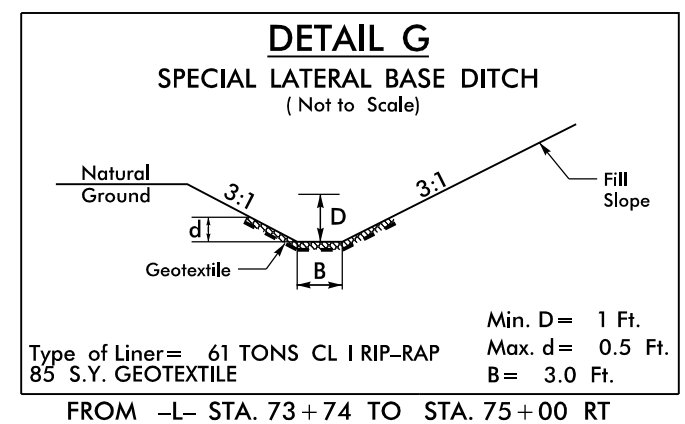
MATCHLINE SHEET 5 -L- STA. 69 + 35.00

MATCHLINE SHEET 7 -L- STA. 82 + 60.00

7 M D GILLIS C/O JUDY GILLIS DIBACCO DB 2584 PG 0783

5 JOHN D GILLIS DB 5280 PG 386 PB 51 PG 32

10 JOHN MCN GILLIS JR ET AL DB 2899 PG 463



- APPROACH SLAB
  - PAVEMENT REMOVAL
- FOR -L- PROFILE, SEE SHEETS NO. 10, 11

FOR LEFT LANE STRUCTURE PLANS, SEE SHEETS S1-1 THRU S1-43  
FOR RIGHT LANE STRUCTURE PLANS, SEE SHEETS S2-1 THRU S2-43

11 DOUGLAS KEITH MILLER & WIFE KATHRYN GILLIS DB 4227 PG 487

8.17.799

02-FEB-2022 07:34  
R:\5798A\U-5798A\U-5798A\Tdy\_psh\_6.dgn  
\$\$\$\$\$DISPATCHNAME\$\$\$\$\$