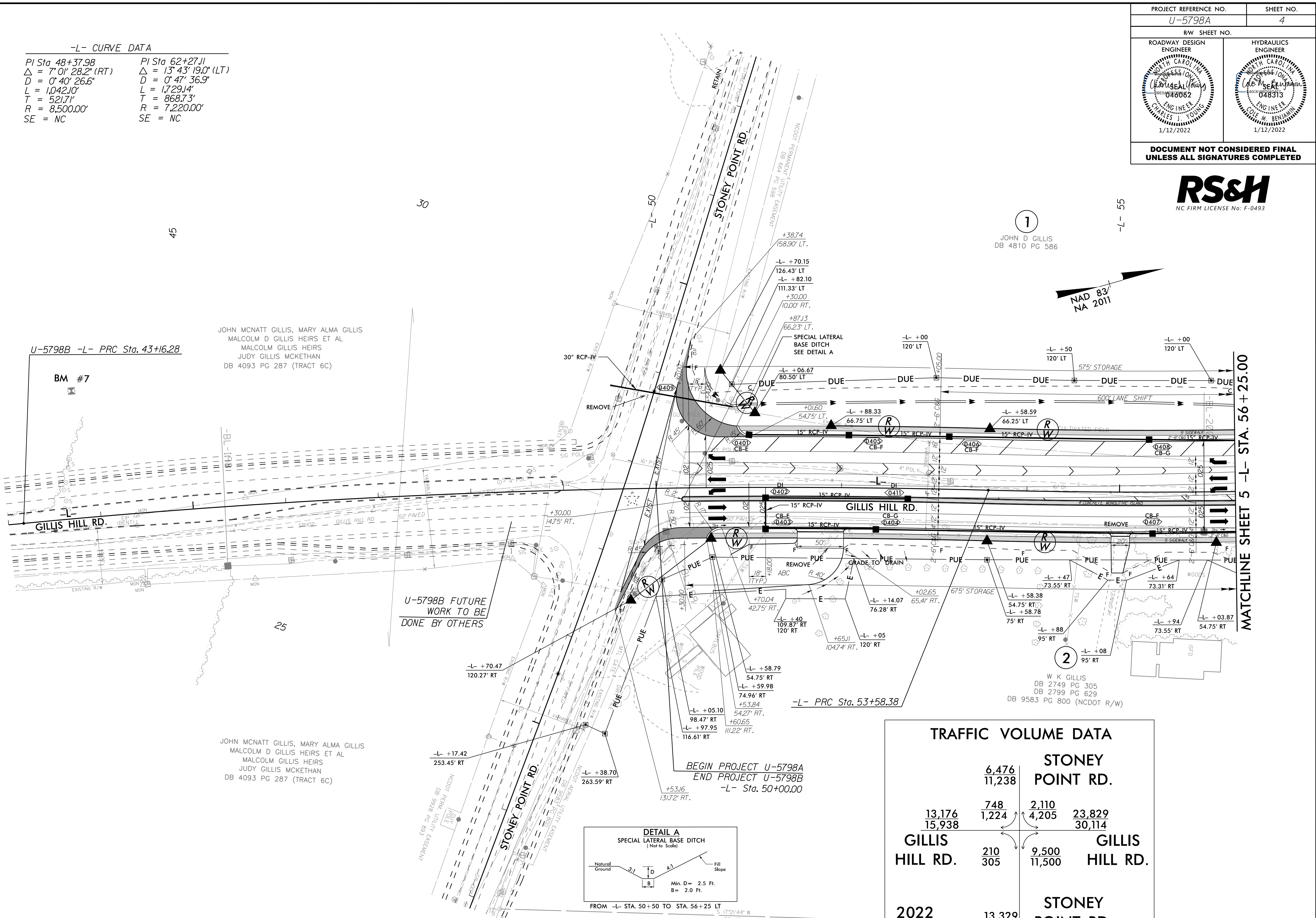


PROJECT REFERENCE NO. U-5798A	SHEET NO. 4
RW SHEET NO.	
ROADWAY DESIGN ENGINEER 	HYDRAULICS ENGINEER
DOCUMENT NOT CONSIDERED FINAL UNLESS ALL SIGNATURES COMPLETED	



-L- CURVE DATA

PI Sta 48+37.98	PI Sta 62+27.11
$\Delta = 7^{\circ} 01' 28.2''$ (RT)	$\Delta = 13^{\circ} 43' 19.0''$ (LT)
D = 0' 40' 26.6"	D = 0' 47' 36.9"
L = 1,042.10'	L = 1,729.14'
T = 521.71'	T = 868.73'
R = 8,500.00'	R = 7,220.00'
SE = NC	SE = NC



U-5798B -L- PRC Sta. 43+16.28

BM #7

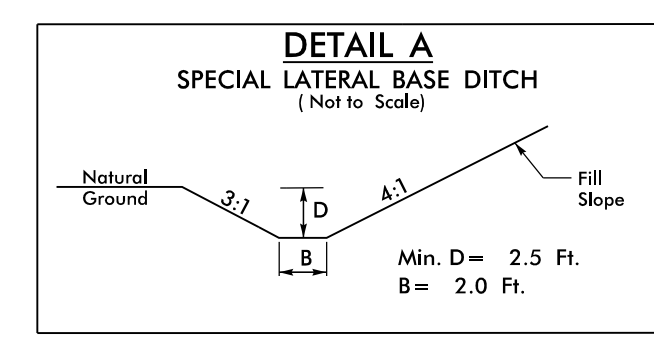
JOHN MCNATT GILLIS, MARY ALMA GILLIS
MALCOLM D GILLIS HEIRS ET AL
MALCOLM GILLIS HEIRS
JUDY GILLIS MCKETHAN
DB 4093 PG 287 (TRACT 6C)

U-5798B FUTURE
WORK TO BE
DONE BY OTHERS

JOHN MCNATT GILLIS, MARY ALMA GILLIS
MALCOLM D GILLIS HEIRS ET AL
MALCOLM GILLIS HEIRS
JUDY GILLIS MCKETHAN
DB 4093 PG 287 (TRACT 6C)

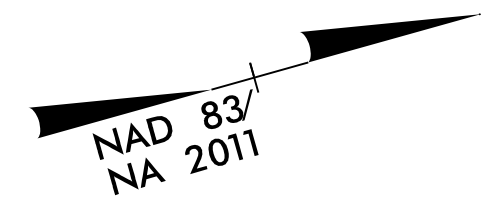
BEGIN PROJECT U-5798A
END PROJECT U-5798B
-L- Sta. 50+00.00

-L- PRC Sta. 53+58.38



FROM -L- STA. 50+50 TO STA. 56+25 LT

1
JOHN D GILLIS
DB 4810 PG 586



2
W K GILLIS
DB 2749 PG 305
DB 2799 PG 629
DB 9583 PG 800 (NCDOT R/W)

TRAFFIC VOLUME DATA			
		STONEY POINT RD.	
		6,476 11,238	
		748 1,224	2,110 4,205
		13,176 15,938	23,829 30,114
		210 305	9,500 11,500
		GILLIS HILL RD.	
		2022 2042	
		13,329 17,614	
		STONEY POINT RD.	

EXISTING SIGNAL

FOR -L- PROFILE, SEE SHEET NO. 10

8/17/2022 8:17/99
28-DEC-2021 14:46
P:\Projects\2021\U-5798A\U-5798A_Rdy_psh_4.dgn
\$\$\$\$\$DISPERNAME\$\$\$\$\$