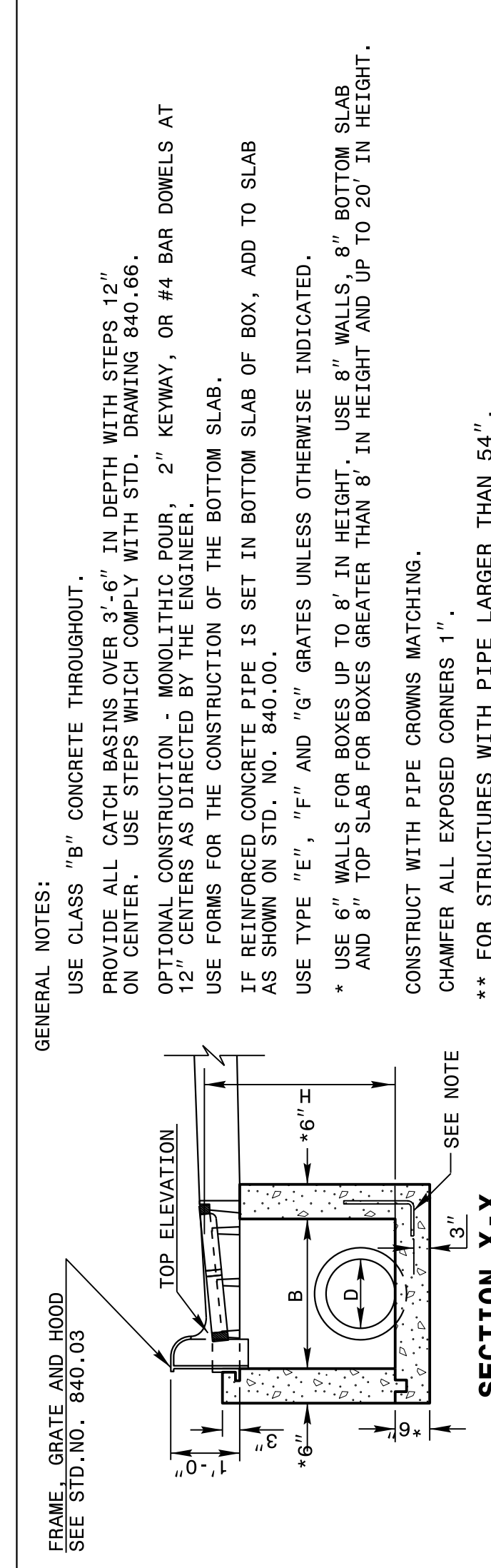
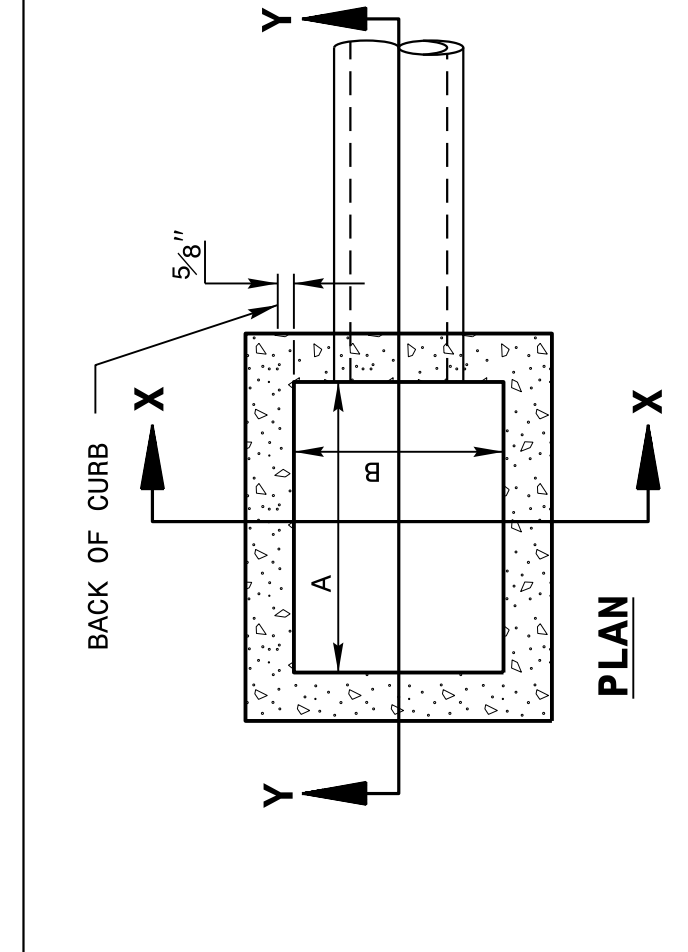


16-APR-2018 11:44
 S:\Contracts\Special Details\Jhewerton\840d02 Extra Depth CB.dgn
 Jhewerton AT CSD-292595

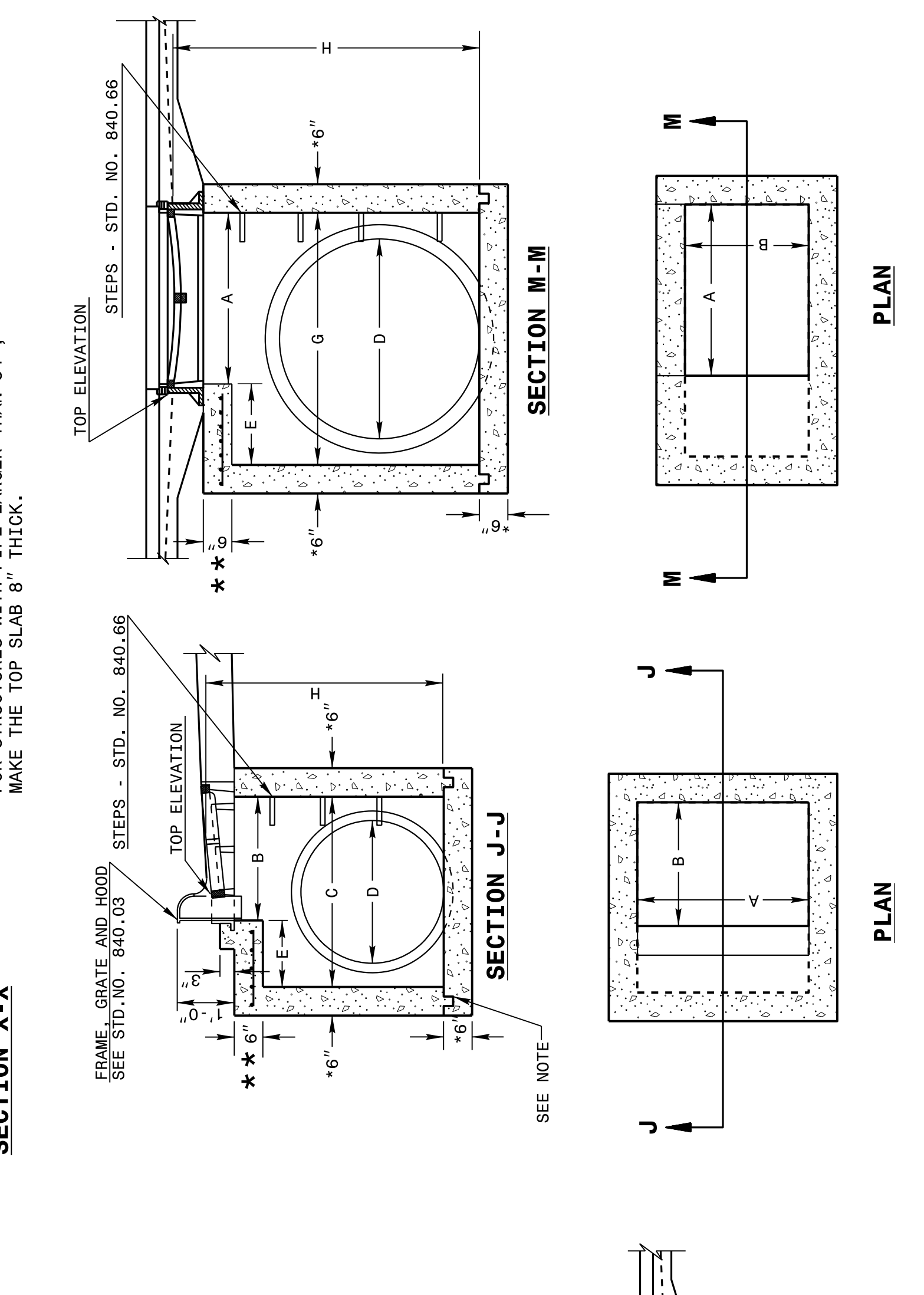
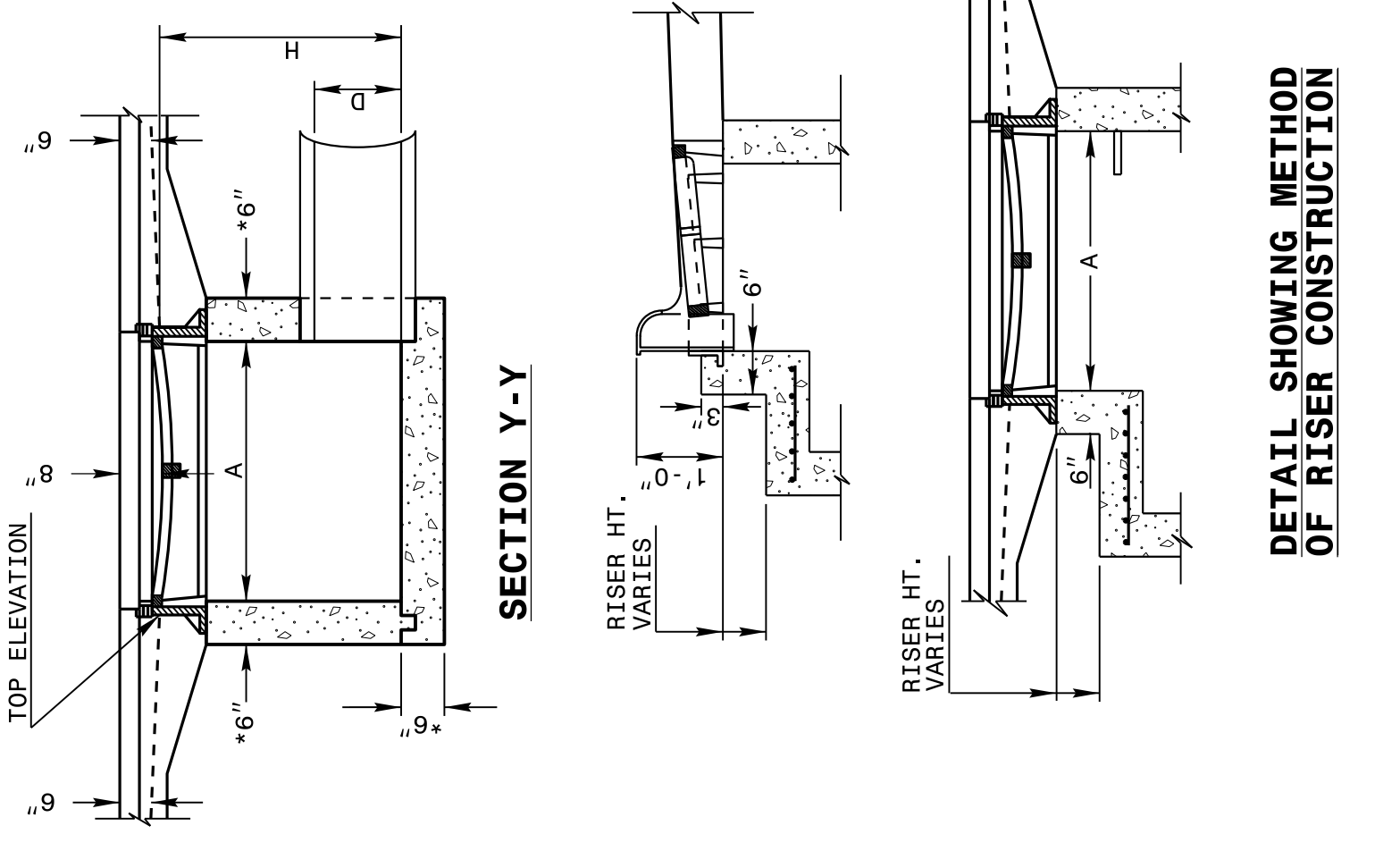
5/14/99

STATE OF NORTH CAROLINA
 DEPT. OF TRANSPORTATION
 DIVISION OF HIGHWAYS
 RALEIGH, N.C.



STATE OF NORTH CAROLINA
 DEPT. OF TRANSPORTATION
 DIVISION OF HIGHWAYS
 RALEIGH, N.C.

ENGLISH DETAIL DRAWING FOR
**EXTRA DEPTH
 CONCRETE CATCH BASIN**
 12" THRU 84" PIPE

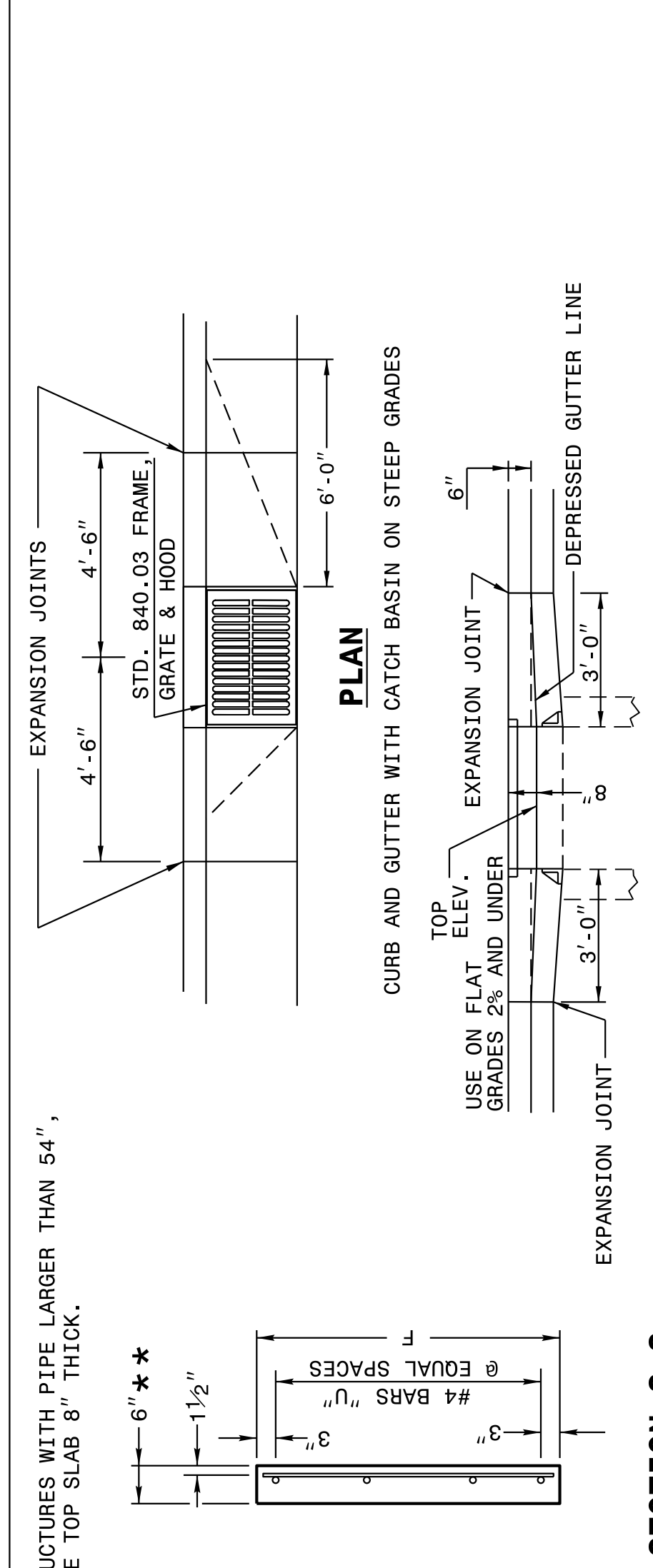
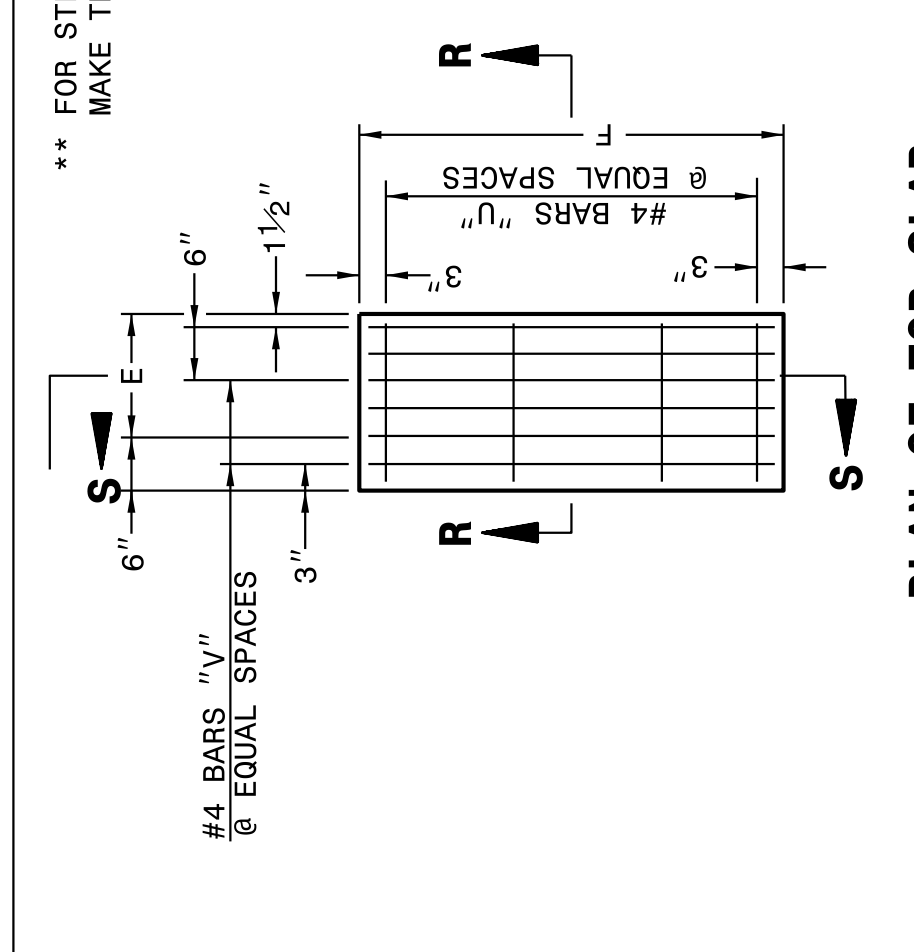


ENGLISH DETAIL DRAWING FOR
**EXTRA DEPTH
 CONCRETE CATCH BASIN**
 12" THRU 84" PIPE

SHEET 1 OF 2
840D02

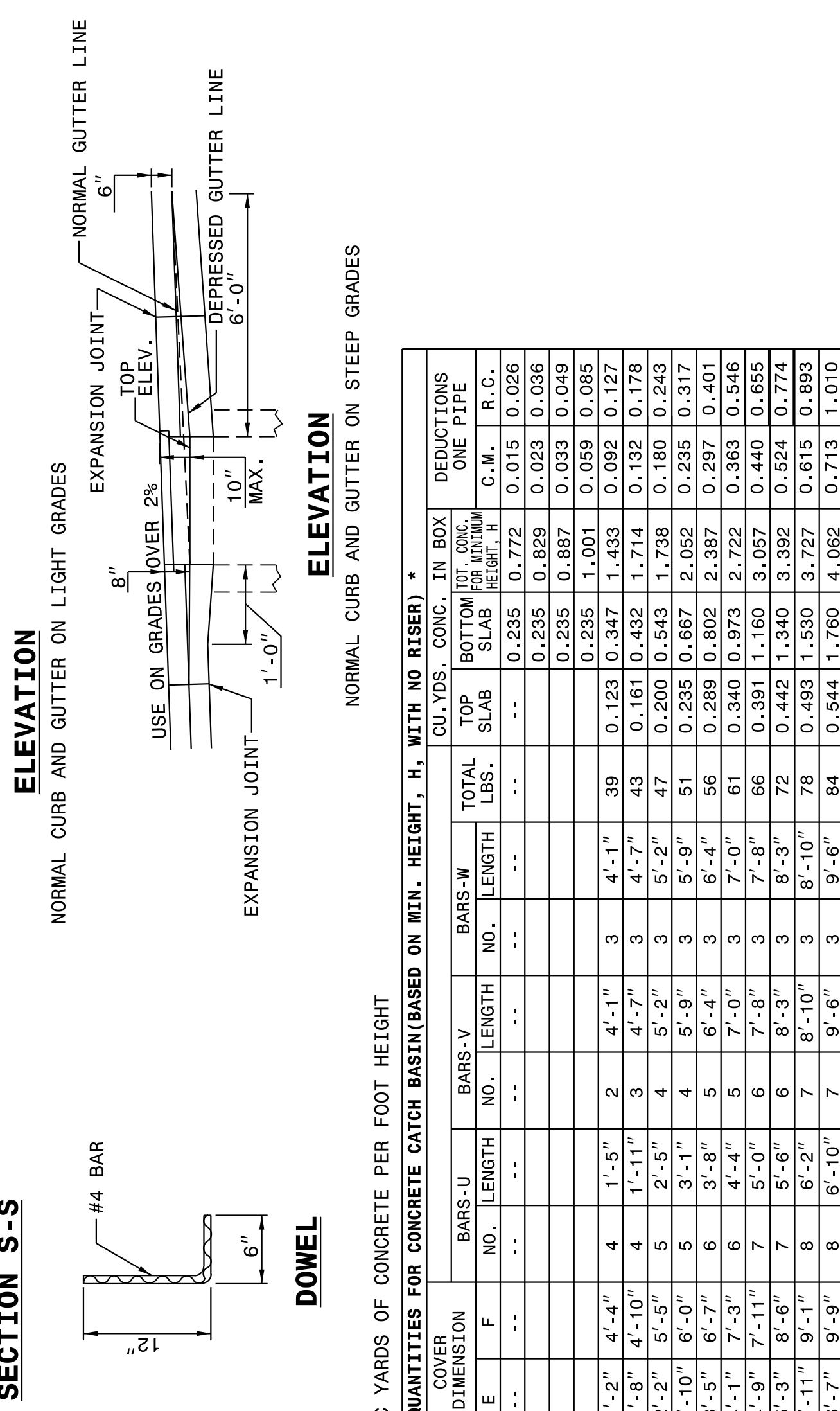
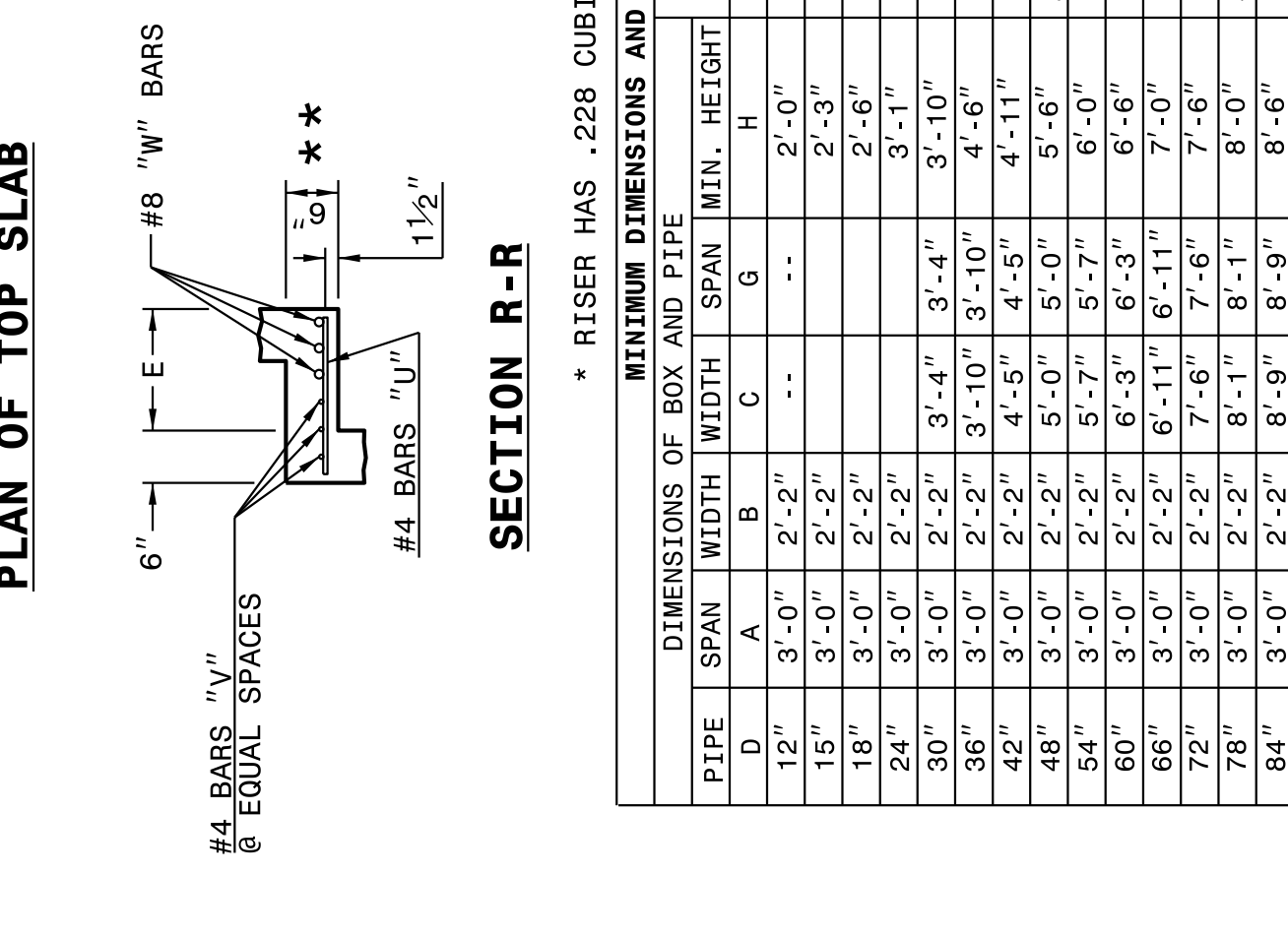
SHEET 1 OF 2
840D02

STATE OF NORTH CAROLINA
 DEPT. OF TRANSPORTATION
 DIVISION OF HIGHWAYS
 RALEIGH, N.C.



STATE OF NORTH CAROLINA
 DEPT. OF TRANSPORTATION
 DIVISION OF HIGHWAYS
 RALEIGH, N.C.

ENGLISH DETAIL DRAWING FOR
**EXTRA DEPTH
 CONCRETE CATCH BASIN**
 12" THRU 84" PIPE



STATE OF NORTH CAROLINA
 DEPT. OF TRANSPORTATION
 DIVISION OF HIGHWAYS
 RALEIGH, N.C.

SHEET 2 OF 2
840D02

SHEET 2 OF 2
840D02

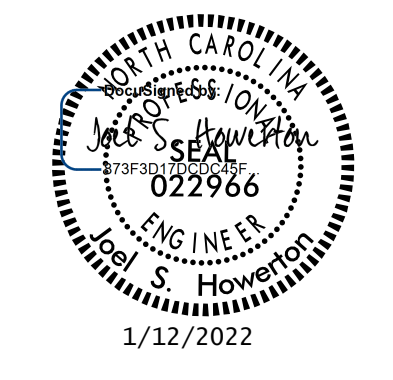
* RISER HAS .228 CUBIC YARDS OF CONCRETE PER FOOT HEIGHT

PIPE D.	MINIMUM DIMENSIONS OF BOX AND PIPE		COVER DIMENSION		BARS-U		BARS-V		BARS-W		TOTAL		DEDUCTIONS	
	SPAN	WIDTH	MIN.	HEIGHT	E	F	NO.	LENGTH	NO.	LENGTH	NO.	LENGTH	CU. YDS. CONC.	IN BOX
12"	3'-0"	2'-2"	2'-0"	2'-3"	0.235	0.772
15"	3'-0"	2'-2"	2'-3"	2'-6"	0.235	0.887
18"	3'-0"	2'-2"	2'-6"	3'-1"	0.235	1.001
24"	3'-0"	2'-2"	3'-1"	3'-10"	1'-2"	4'-4"	4	1'-5"	2	4'-1"	3	4'-1"	0.123	0.347
30"	3'-0"	2'-2"	3'-4"	3'-4"	1'-8"	4'-10"	4	1'-11"	3	4'-7"	3	4'-7"	0.161	0.432
36"	3'-0"	2'-2"	3'-10"	3'-10"	2'-2"	5'-5"	5	2'-5"	4	5'-2"	4	5'-2"	0.200	0.543
42"	3'-0"	2'-2"	4'-5"	4'-5"	2'-10"	6'-0"	5	3'-1"	4	5'-9"	3	5'-9"	0.235	0.667
48"	3'-0"	2'-2"	5'-0"	5'-0"	3'-5"	6'-7"	6	3'-8"	5	6'-4"	3	6'-4"	0.289	0.802
54"	3'-0"	2'-2"	5'-7"	6'-0"	4'-1"	7'-3"	6	4'-4"	5	7'-0"	3	7'-0"	0.340	0.973
60"	3'-0"	2'-2"	6'-3"	6'-3"	4'-9"	7'-11"	7	5'-0"	6	7'-8"	3	7'-8"	0.391	1.160
66"	3'-0"	2'-2"	6'-11"	6'-11"	5'-3"	8'-6"	7	5'-6"	6	8'-3"	3	8'-3"	0.442	1.340
72"	3'-0"	2'-2"	7'-6"	7'-6"	5'-11"	9'-1"	8	6'-2"	7	8'-10"	3	8'-10"	0.493	1.530
78"	3'-0"	2'-2"	8'-1"	8'-1"	6'-7"	9'-9"	8	6'-10"	7	9'-6"	3	9'-6"	0.544	1.760
84"	3'-0"	2'-2"	8'-9"	8'-9"	6'-7"	9'-9"	8	6'-10"	7	9'-6"	3	9'-6"	0.544	1.760

CONTRACT STANDARDS
 AND DEVELOPMENT UNIT
 Office 919-707-6950 FAX 919-250-4119

SEE PLATE FOR TITLE

ORIGINAL BY: 2002 Std.840.01 DATE: _____
 MODIFIED BY: E.E. WARD DATE: 3-1-02
 CHECKED BY: _____ DATE: _____
 FILE SPEC.: jhewerton/840d02 Extra_Depth CB.dgn



1/12/2002

DOCUMENT NOT CONSIDERED FINAL
 UNLESS ALL SIGNATURES COMPLETED