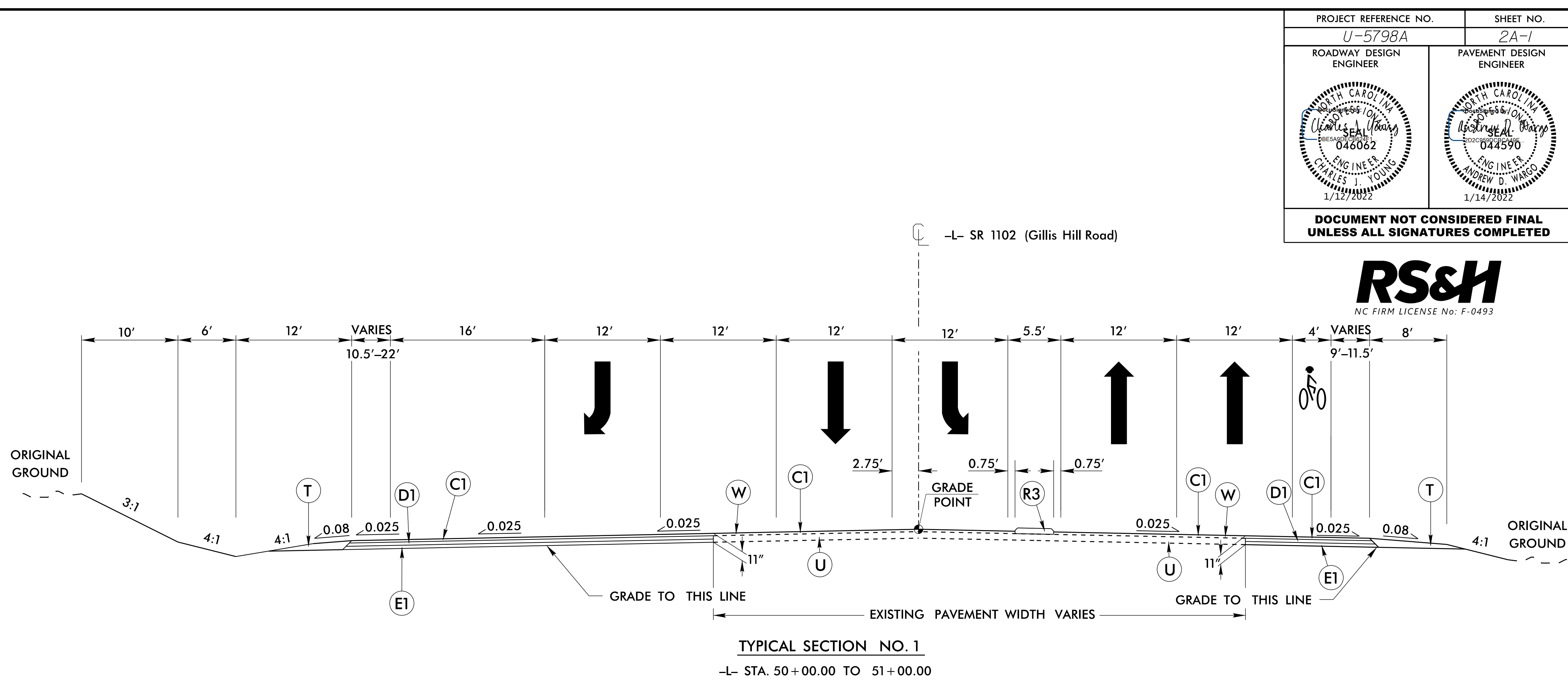


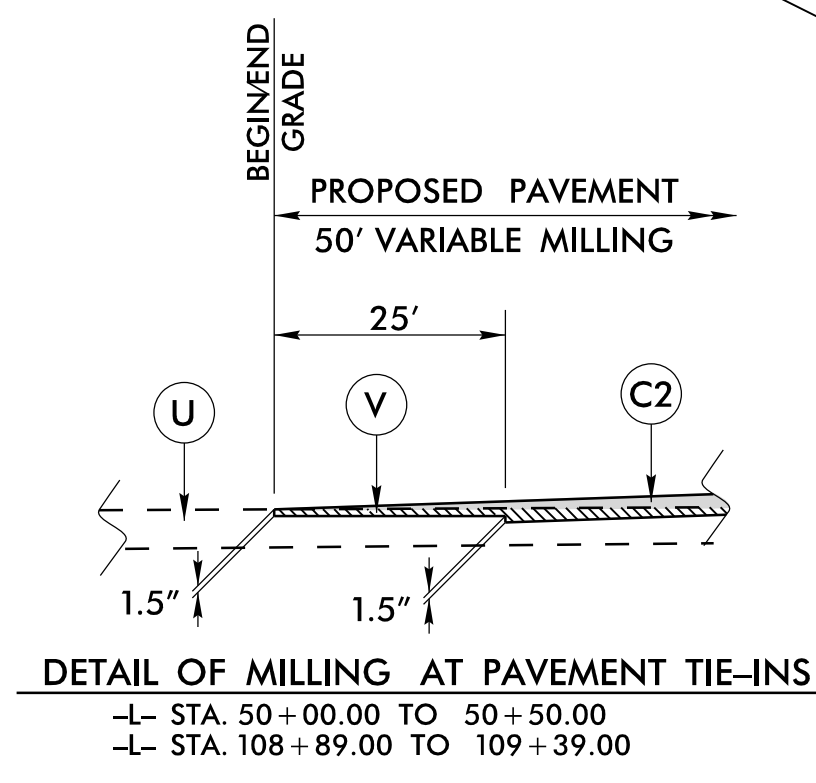
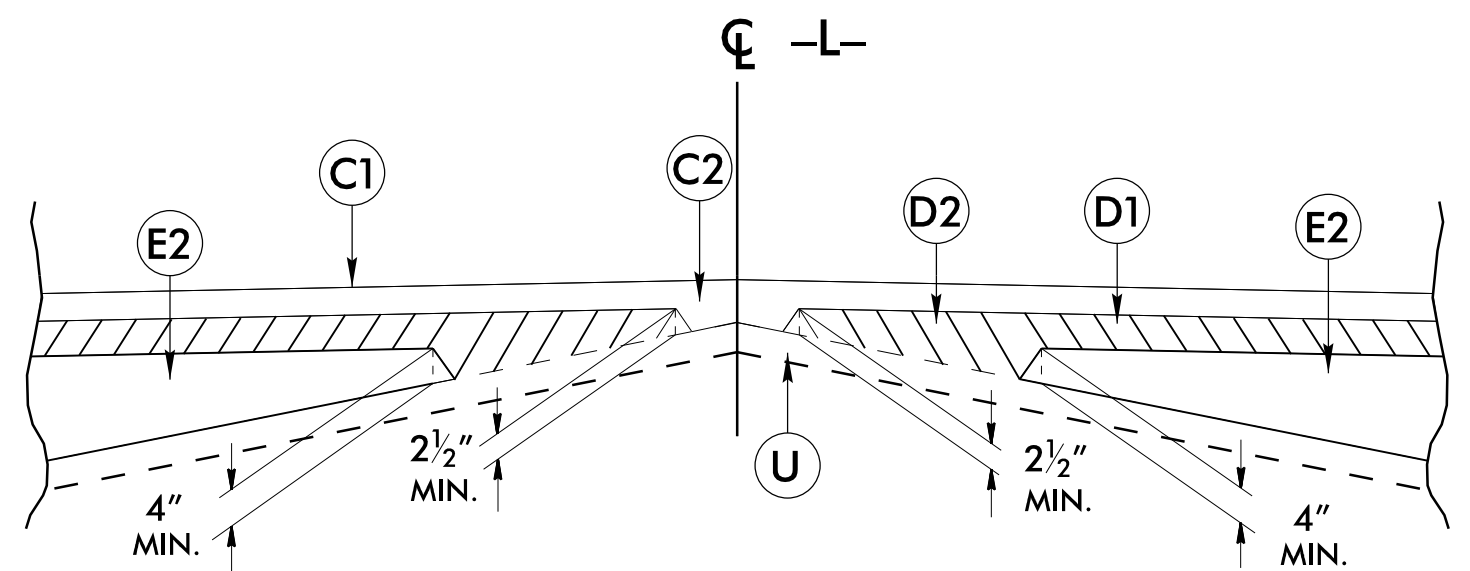
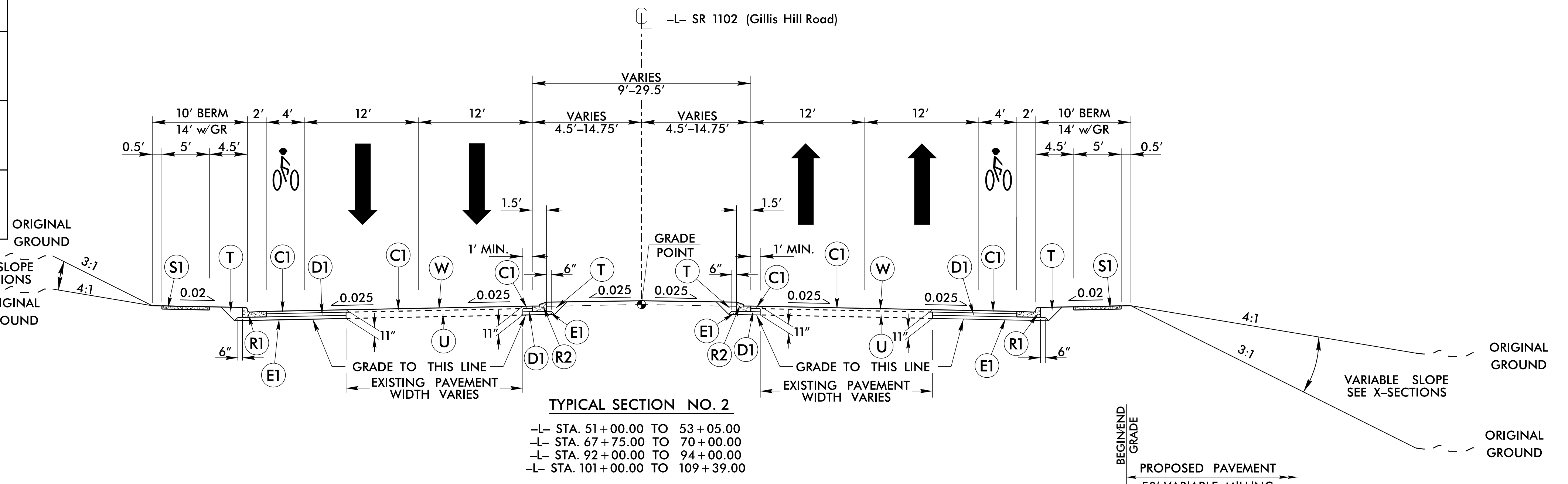
8/17/99

FINAL PAVEMENT SCHEDULE	
C1	PROP. APPROX. 3" ASPHALT CONCRETE SURFACE COURSE, TYPE S9.5C, AT AN AVERAGE RATE OF 168 LBS. PER SQ. YD. IN EACH OF TWO LAYERS.
C2	PROP. VAR. DEPTH ASPHALT CONCRETE SURFACE COURSE, TYPE S9.5C, AT AN AVERAGE RATE OF 112 LBS. PER SQ. YD. PER 1.0" DEPTH. TO BE PLACED IN LAYERS NOT LESS THAN 1.5" IN DEPTH OR GREATER THAN 2.0" IN DEPTH.
D1	PROP. APPROX. 4" ASPHALT CONCRETE INTERMEDIATE COURSE, TYPE I19.0C, AT AN AVERAGE RATE OF 456 LBS. PER SQ. YD.
D2	PROP. VAR. DEPTH ASPHALT CONCRETE INTERMEDIATE COURSE, TYPE I19.0C, AT AN AVERAGE RATE OF 114 LBS. PER SQ. YD. PER 1" DEPTH. TO BE PLACED IN LAYERS NOT LESS THAN 2.5" IN DEPTH OR GREATER THAN 4" IN DEPTH.
E1	PROP. APPROX. 4" ASPHALT CONCRETE BASE COURSE, TYPE B25.0C, AT AN AVERAGE RATE OF 456 LBS. PER SQ. YD.
E2	PROP. VAR. DEPTH ASPHALT CONCRETE BASE COURSE, TYPE B25.0C, AT AN AVERAGE RATE OF 114 LBS. PER SQ. YD. PER 1.0" DEPTH. TO BE PLACED IN LAYERS NOT LESS THAN 4.0" IN DEPTH OR GREATER THAN 5.5" IN DEPTH.
R1	2'-6" CONCRETE CURB AND GUTTER.
R2	1'-6" CONCRETE CURB AND GUTTER.
R3	5" MONOLITHIC CONCRETE ISLAND (KEYED-IN).
S1	4" CONCRETE SIDEWALK.
T	EARTH MATERIAL.
U	EXISTING PAVEMENT.
V	MILLING ASPHALT PAVEMENT, 0" TO 3"
W	VARIABLE DEPTH ASPHALT PAVEMENT (SEE WEDGING DETAIL).

NOTE: PAVEMENT EDGES ARE 1:1 UNLESS SHOWN OTHERWISE.



NOTE:
 TRANSITION RIGHT SHOULDER SECTION TO C&G SECTION AT -L- STA. 50+53.84.
 TRANSITION LEFT SHOULDER SECTION TO C&G SECTION AT -L- STA. 50+87.13.



PROJECT REFERENCE NO. U-5798A	SHEET NO. 2A-1
ROADWAY DESIGN ENGINEER 	PAVEMENT DESIGN ENGINEER
DOCUMENT NOT CONSIDERED FINAL UNLESS ALL SIGNATURES COMPLETED	



28-DEC-2021 13:46 P:\Projects\2021\U-5798A\U-5798A_RdJ_tjy.dgn