

8/17/19

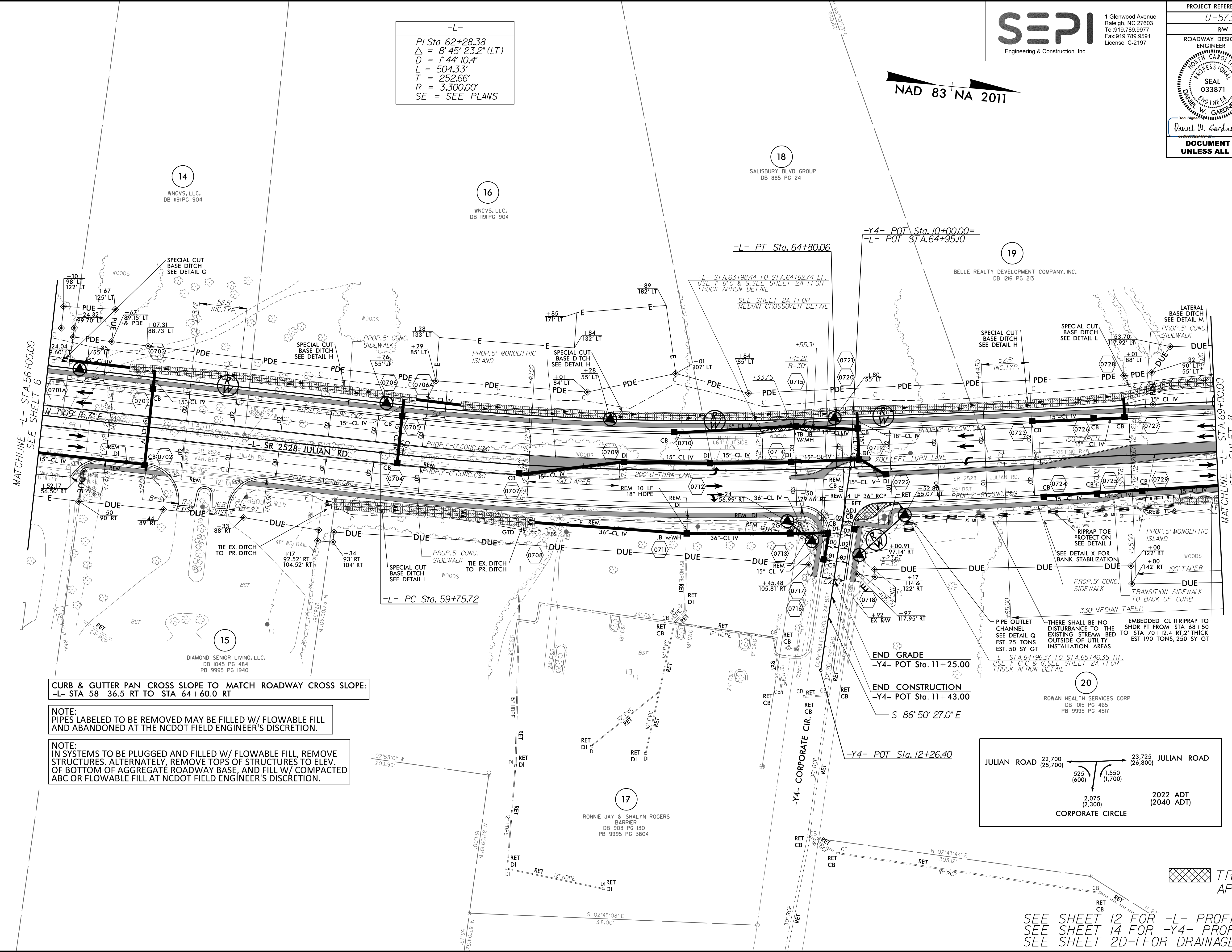
SEPI
Engineering & Construction, Inc.

1 Glenwood Avenue
Raleigh, NC 27603
Tel: 919.789.9977
Fax: 919.789.9591
License: C-2197

PROJECT REFERENCE NO. U-5738		SHEET NO. 7	
RW SHEET NO.		HYDRAULICS ENGINEER	
ROADWAY DESIGN ENGINEER		SEAL 033871	
DANIEL W. GARDNER, JR.		SEAL 039122	
DANIEL W. GARDNER, JR.		GREGORY W. BRICKMAN	
DOCUMENT NOT CONSIDERED FINAL UNLESS ALL SIGNATURES COMPLETED			

-L-
PI Sta 62+28.38
 $\Delta = 8'45"23.2" (LT)$
 $D = 1'44"10.4"$
 $L = 504.33'$
 $T = 252.66'$
 $R = 3,300.00'$
SE = SEE PLANS

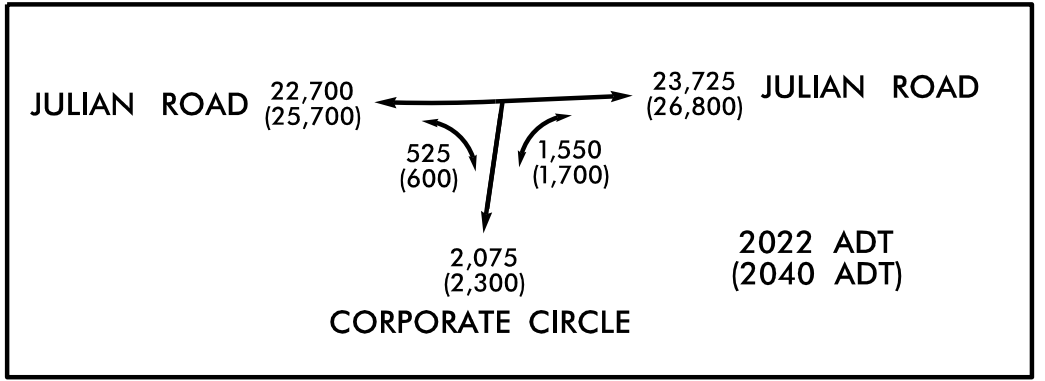
NAD 83 NA 2011



CURB & GUTTER PAN CROSS SLOPE TO MATCH ROADWAY CROSS SLOPE:
-L- STA 58+36.5 RT TO STA 64+60.0 RT

NOTE:
PIPES LABELED TO BE REMOVED MAY BE FILLED W/ FLOWABLE FILL AND ABANDONED AT THE NCDOT FIELD ENGINEER'S DISCRETION.

NOTE:
IN SYSTEMS TO BE PLUGGED AND FILLED W/ FLOWABLE FILL, REMOVE STRUCTURES. ALTERNATELY, REMOVE TOPS OF STRUCTURES TO ELEV. OF BOTTOM OF AGGREGATE ROADWAY BASE, AND FILL W/ COMPACTED ABC OR FLOWABLE FILL AT NCDOT FIELD ENGINEER'S DISCRETION.



REVISIONS

11/19/2021 U:\5738_Rd\..._psh_7.dgn

SEE SHEET 12 FOR -L- PROFILE
SEE SHEET 14 FOR -Y4- PROFILE
SEE SHEET 2D-I FOR DRAINAGE DITCH DETAILS