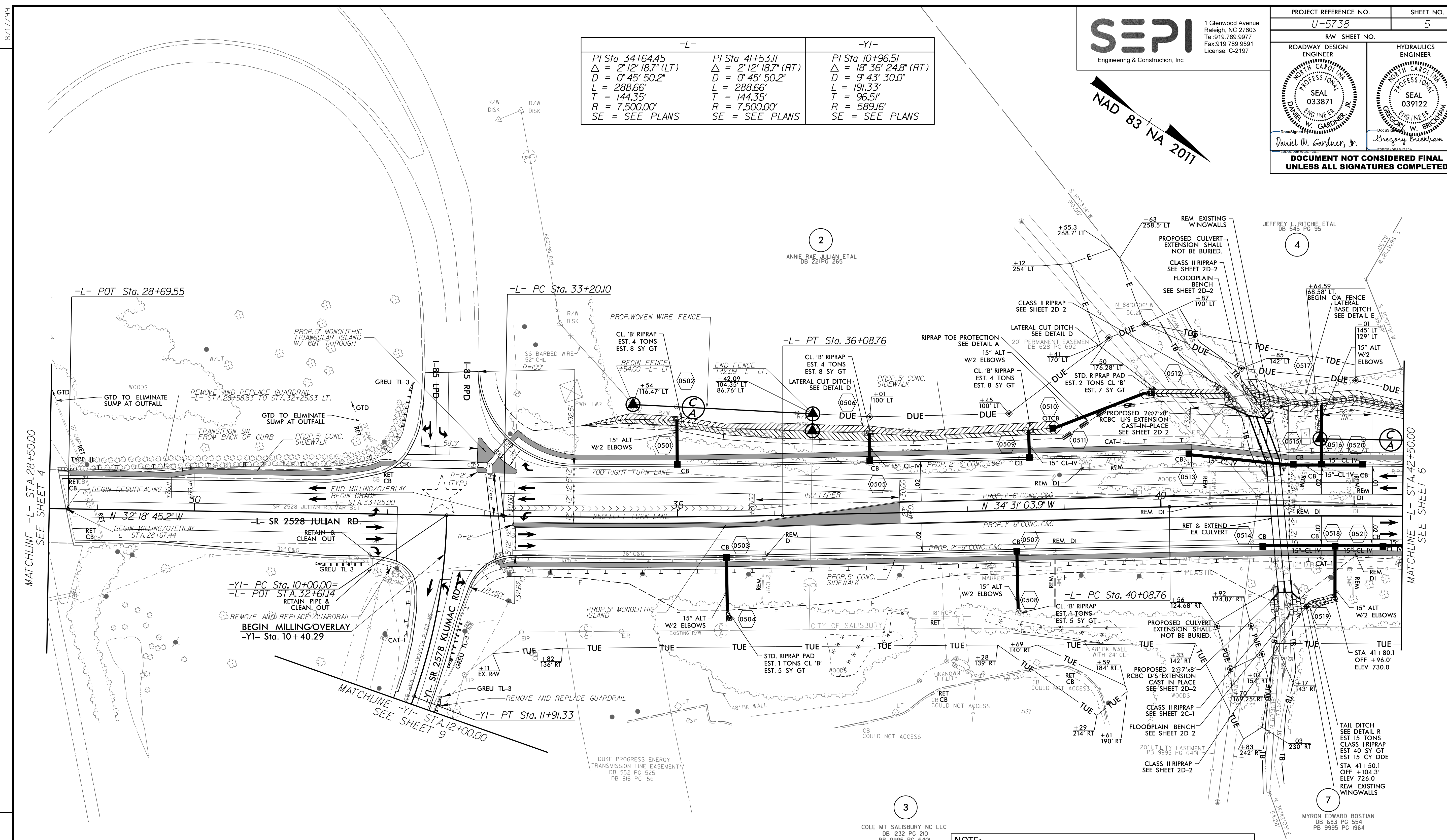
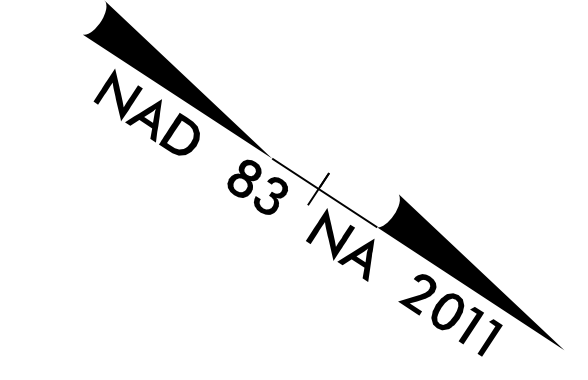


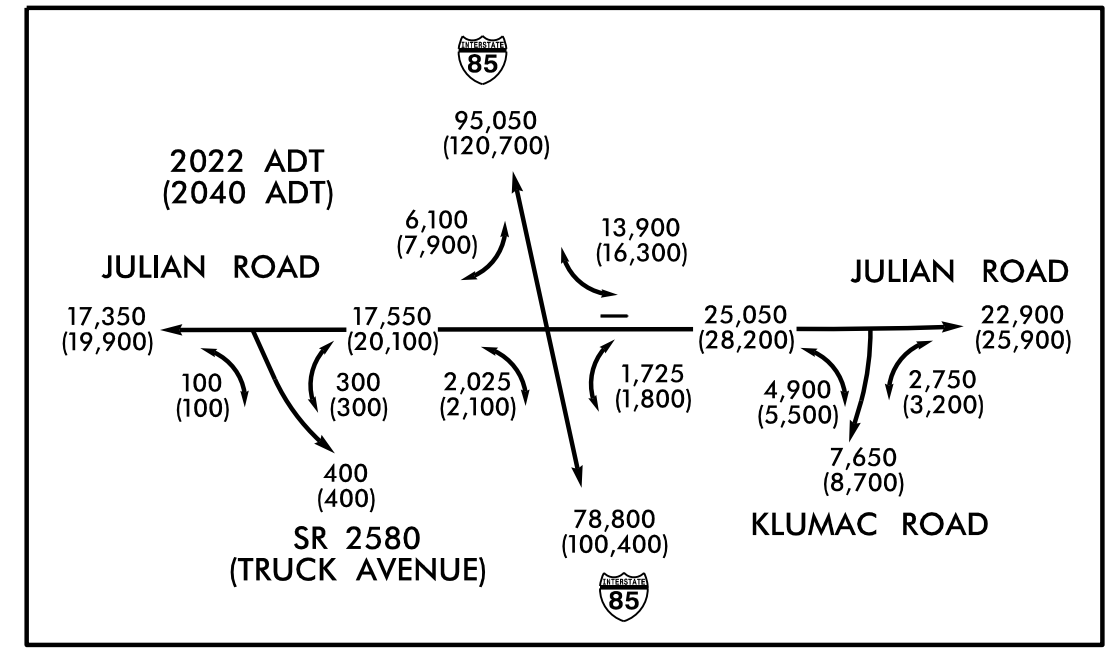
-L-	-YI-	-YI-
PI Sta 34+64.45	PI Sta 41+53.11	PI Sta 10+96.51
$\Delta = 2' 12" 18.7" (LT)$	$\Delta = 2' 12" 18.7" (RT)$	$\Delta = 18' 36" 24.8" (RT)$
$D = 0' 45" 50.2"$	$D = 0' 45" 50.2"$	$D = 9' 43" 30.0"$
$L = 288.66'$	$L = 288.66'$	$L = 191.33'$
$T = 144.35'$	$T = 144.35'$	$T = 96.51'$
$R = 7,500.00'$	$R = 7,500.00'$	$R = 589.16'$
SE = SEE PLANS	SE = SEE PLANS	SE = SEE PLANS



REVISIONS

MATCHLINE -L- STA. 28+50.00  
SEE SHEET 4

MATCHLINE -L- STA. 42+50.00  
SEE SHEET 6



NOTE:  
PIPES LABELED TO BE REMOVED MAY BE FILLED W/ FLOWABLE FILL AND ABANDONED AT THE NCDOT FIELD ENGINEER'S DISCRETION.

NOTE:  
IN SYSTEMS TO BE PLUGGED AND FILLED W/ FLOWABLE FILL, REMOVE STRUCTURES. ALTERNATELY, REMOVE TOPS OF STRUCTURES TO ELEV. OF BOTTOM OF AGGREGATE ROADWAY BASE, AND FILL W/ COMPACTED ABC OR FLOWABLE FILL AT NCDOT FIELD ENGINEER'S DISCRETION.

SEE SHEET 11 FOR -L- PROFILE  
 SEE SHEET 13 FOR -YI- PROFILE  
 SEE SHEET 2D-1 FOR DRAINAGE DITCH DETAILS  
 SEE SHEET 2D-2 FOR CULVERT DETAILS  
 SEE SHEETS C-1 THRU C-9 FOR CULVERT PLANS

8/17/19

11/19/2021  
U:\Projects\U5738\_Rd\...\_5.dgn  
15:58:00