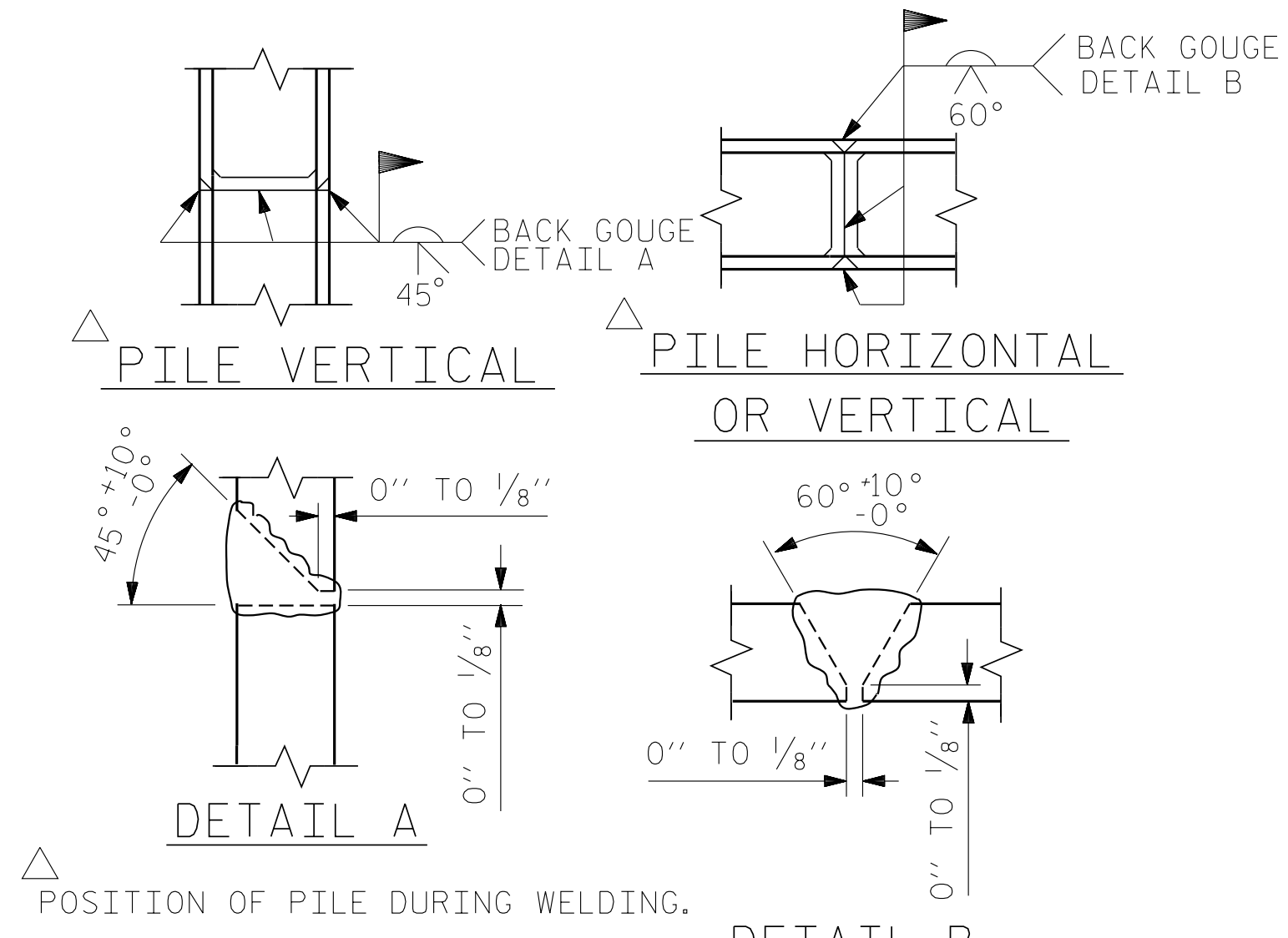


BAGGED STONE AND PIPE SHALL BE PLACED IMMEDIATELY AFTER COMPLETION OF END BENT EXCAVATION. PIPE MAY BE EITHER CONCRETE, CORRUGATED STEEL, CORRUGATED ALUMINUM ALLOY, OR CORRUGATED PLASTIC. PERFORATED PIPE WILL NOT BE ALLOWED.

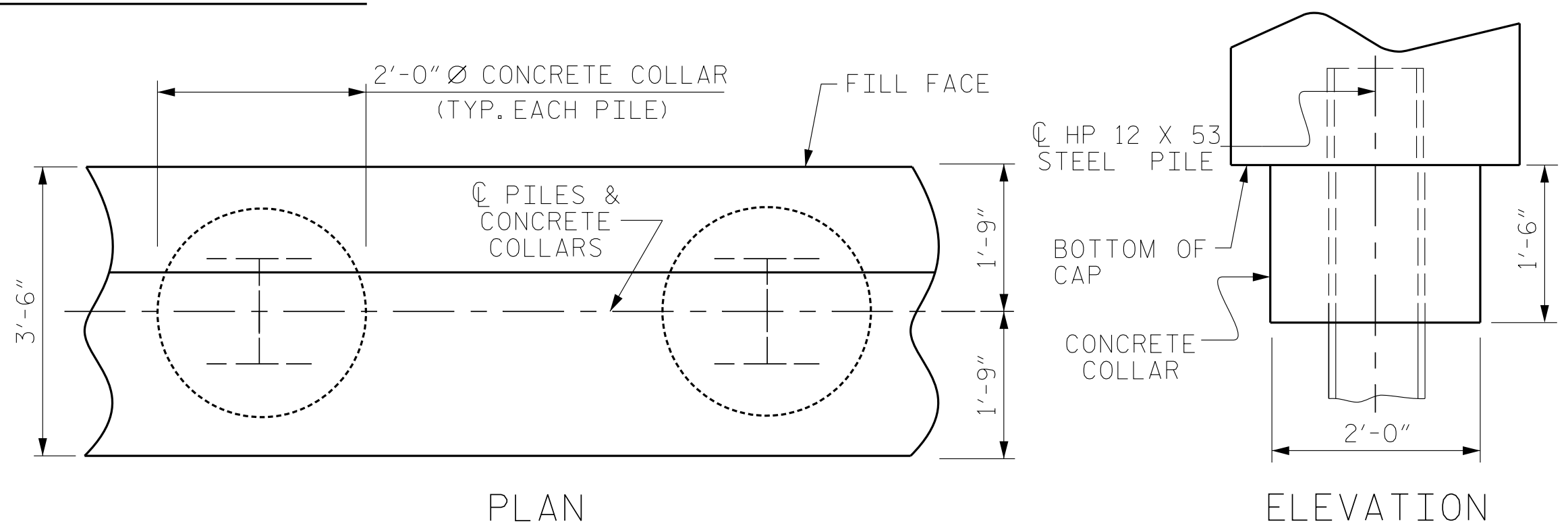
BAGGED STONE SHALL REMAIN IN PLACE UNTIL THE ENGINEER DIRECTS THAT IT BE REMOVED. THE CONTRACTOR SHALL REMOVE AND DISPOSE OF SILT ACCUMULATIONS AT BAGGED STONE WHEN SO DIRECTED BY THE ENGINEER. BAGS SHALL BE REMOVED AND REPLACED WHENEVER THE ENGINEER DETERMINES THAT THEY HAVE DETERIORATED AND LOST THEIR EFFECTIVENESS.

NO SEPARATE PAYMENT WILL BE MADE FOR THIS WORK AND THE ENTIRE COST OF THIS WORK SHALL BE INCLUDED IN THE UNIT CONTRACT PRICE BID FOR THE SEVERAL PAY ITEMS.

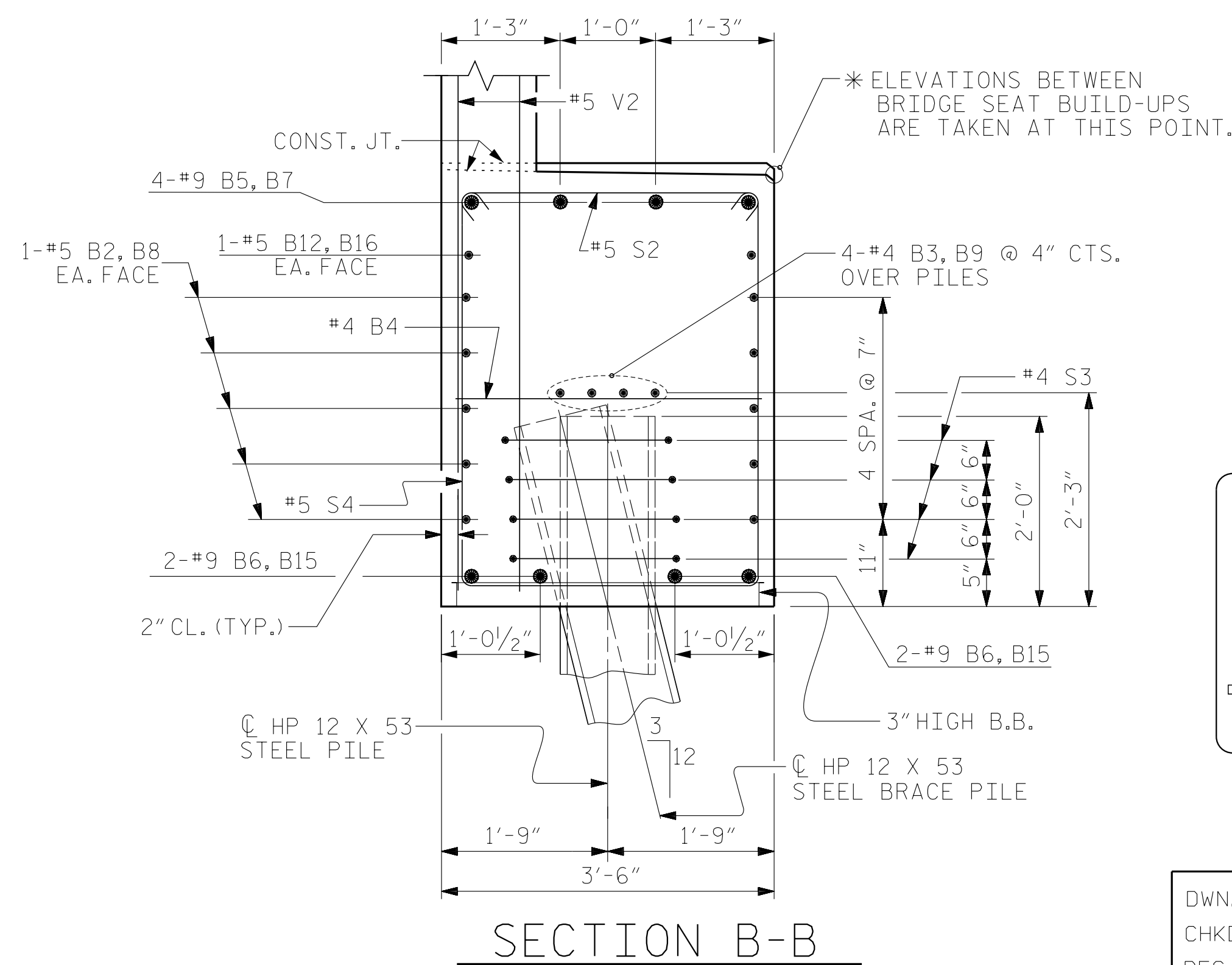
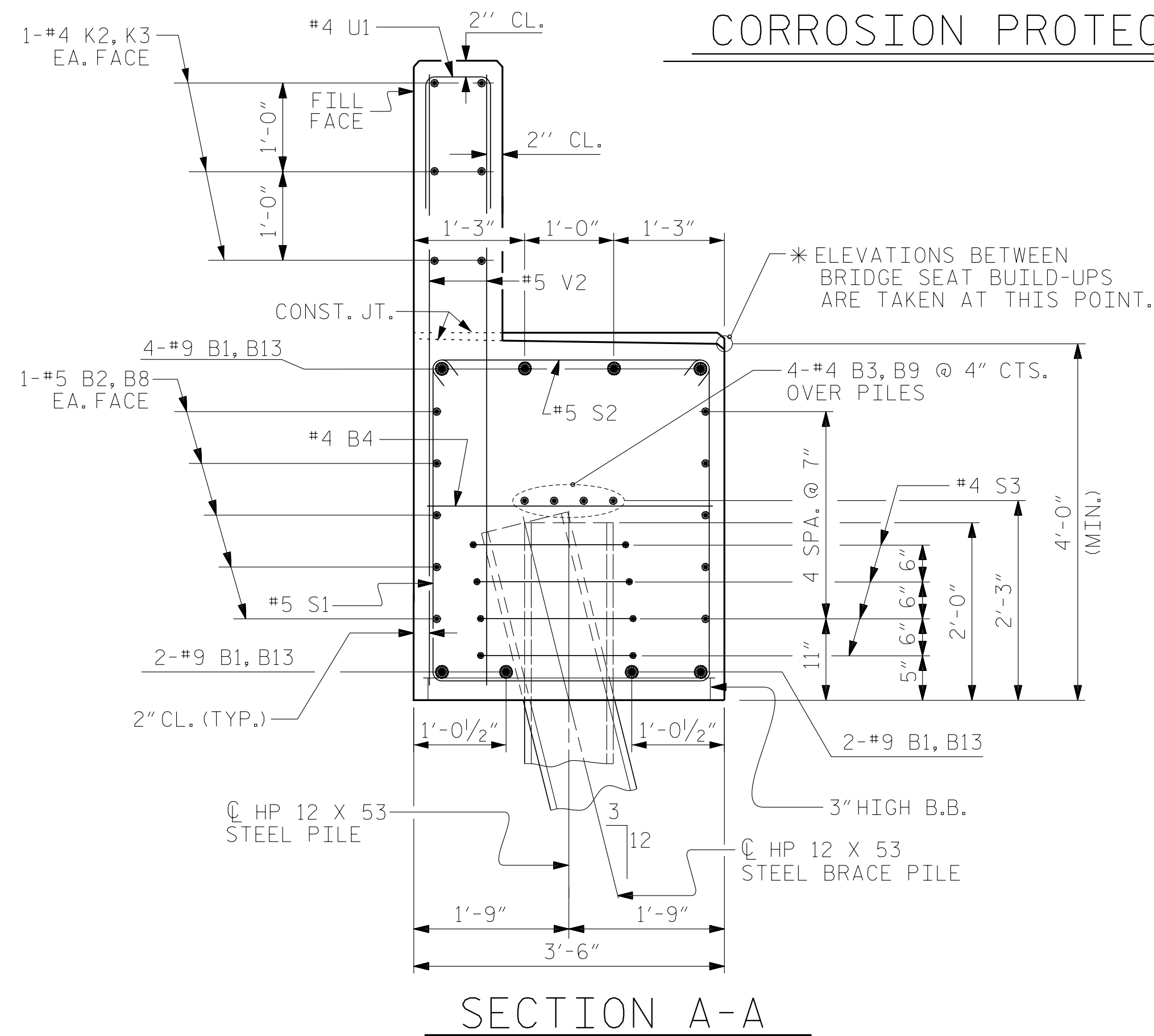
TEMPORARY DRAINAGE AT END BENT



PILE SPLICE DETAILS



CORROSION PROTECTION FOR STEEL PILES DETAIL



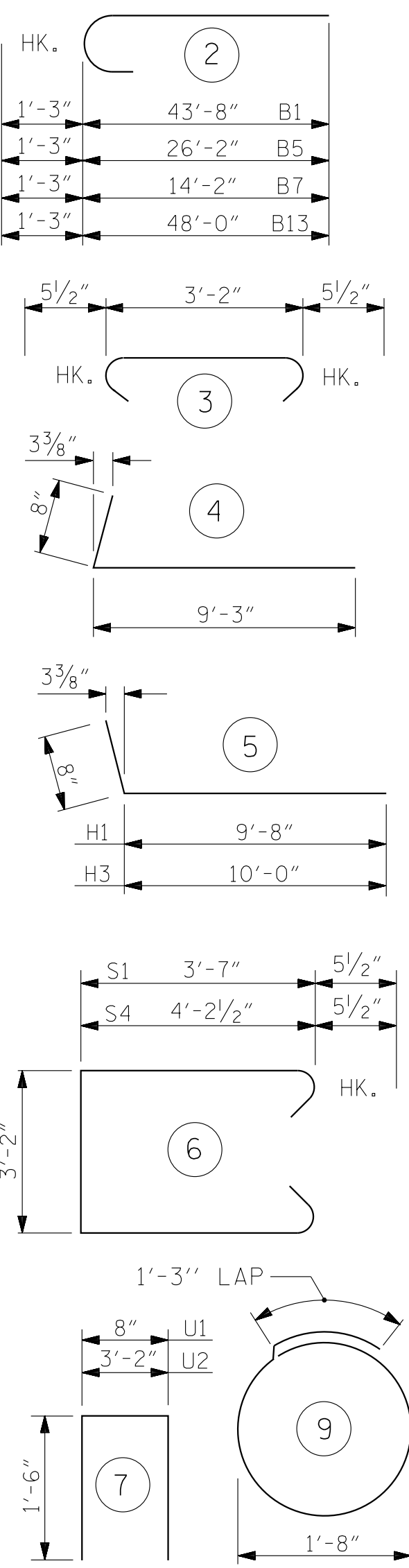
BILL OF MATERIAL

END BENT 2

STAGE I					STAGE II						
BAR	NO.	SIZE	TYPE	LENGTH	WEIGHT	BAR	NO.	SIZE	TYPE	LENGTH	WEIGHT
B1	8	#9	2	44'-11"	1,222	B4	17	#4	STR	3'-2"	36
B2	20	#5	STR	30'-11"	645	B7	4	#9	STR	15'-5"	210
B3	12	#4	STR	21'-0"	168	B8	20	#5	STR	26'-3"	548
B4	21	#4	STR	3'-2"	44	B9	8	#4	STR	25'-10"	138
B5	4	#9	2	27'-5"	373	B11	20	#4	STR	2'-8"	36
B6	4	#9	STR	23'-2"	315	B13	8	#9	2	44'-0"	1,197
B10	4	#4	STR	12'-6"	33	B14	4	#4	STR	12'-0"	33
B11	24	#4	STR	2'-8"	43	B15	4	#9	STR	11'-2"	152
B12	2	#5	STR	21'-1"	44	B16	2	#5	STR	8'-6"	35
H2	26	#5	4	9'-11"	269	H1	13	#5	5	10'-4"	140
K1	4	#4	STR	4'-3"	11	H3	13	#5	5	10'-8"	145
K2	18	#4	STR	21'-0"	253	K1	4	#4	STR	4'-3"	11
S1	31	#5	6	11'-3"	364	K3	12	#4	STR	26'-0"	208
S2	53	#5	3	4'-1"	226	S1	30	#5	6	11'-3"	352
S3	28	#4	9	6'-6"	122	S2	43	#5	3	4'-1"	183
S4	22	#5	6	12'-6"	287	S3	24	#4	9	6'-6"	104
U1	54	#4	7	3'-8"	132	S4	13	#5	6	12'-6"	169
U2	18	#4	7	6'-2"	74	U1	46	#4	7	3'-8"	113
V1	32	#4	STR	8'-2"	175	U2	15	#4	7	6'-2"	62
V2	108	#5	STR	6'-4"	713	V1	33	#4	STR	8'-3"	182
						V2	92	#5	STR	6'-4"	608

REINFORCING STEEL	5,513 LBS.	REINFORCING STEEL	4,662 LBS.
CLASS A CONCRETE BREAKDOWN		CLASS A CONCRETE BREAKDOWN	
POUR 1: CAP, BOT OF WINGS, PILE COLLARS	36.8 C.Y.	POUR 1: CAP, BOT OF WINGS, PILE COLLARS	30.7 C.Y.
POUR 2: BACKWALL, UPPER PART OF WINGS	8.0 C.Y.	POUR 2: BACKWALL, UPPER PART OF WINGS	7.1 C.Y.
TOTAL CLASS A CONCRETE	44.8 C.Y.	TOTAL CLASS A CONCRETE	37.8 C.Y.
HP 12 X 53 STEEL PILES NO: 7 LIN. FT. = 120'-0"		HP 12 X 53 STEEL PILES NO: 6 LIN. FT. = 100'-0"	
PILE DRIVING EQUIPMENT SETUP FOR HP 12 X 53 STEEL PILES NO: 7		PILE DRIVING EQUIPMENT SETUP FOR HP 12 X 53 STEEL PILES NO: 6	
PILE POINTS NO: 7		PILE POINTS NO: 6	

BAR TYPES



12/13/2021

V&M
Vaughn & Melton
Consulting Engineers

Asheville, North Carolina
828-253-2796

Boone, NC 828-356-9933
Tri-Cities, TN 423-467-8401
Knoxville, TN 865-546-5800
Spartanburg, SC 864-574-4775
Charleston, SC 843-914-5650
Middleboro, KY 606-248-6600
Atlanta, GA 770-627-3509

Copyright © 2006 Vaughn & Melton, Inc. All Rights Reserved.

DOCUMENT NOT CONSIDERED FINAL UNLESS ALL SIGNATURES COMPLETED

DWN. BY: FRJ DATE: 11/18
CHKD. BY: CDB DATE: 11/18
DES. EGR. OF RECORD: CDB DATE: 11/18

PROJECT NO. U-5738

ROWAN COUNTY

STATION: 70+72.50 -L-

SHEET 4 OF 4

STATE OF NORTH CAROLINA
DEPARTMENT OF TRANSPORTATION
RALEIGH

**SUBSTRUCTURE
END BENT 2
DETAILS**

REVISIONS						SHEET NO.	
NO.	BY:	DATE:	NO.	BY:	DATE:	S-34	
1			3			TOTAL SHEETS 39	
2			4				