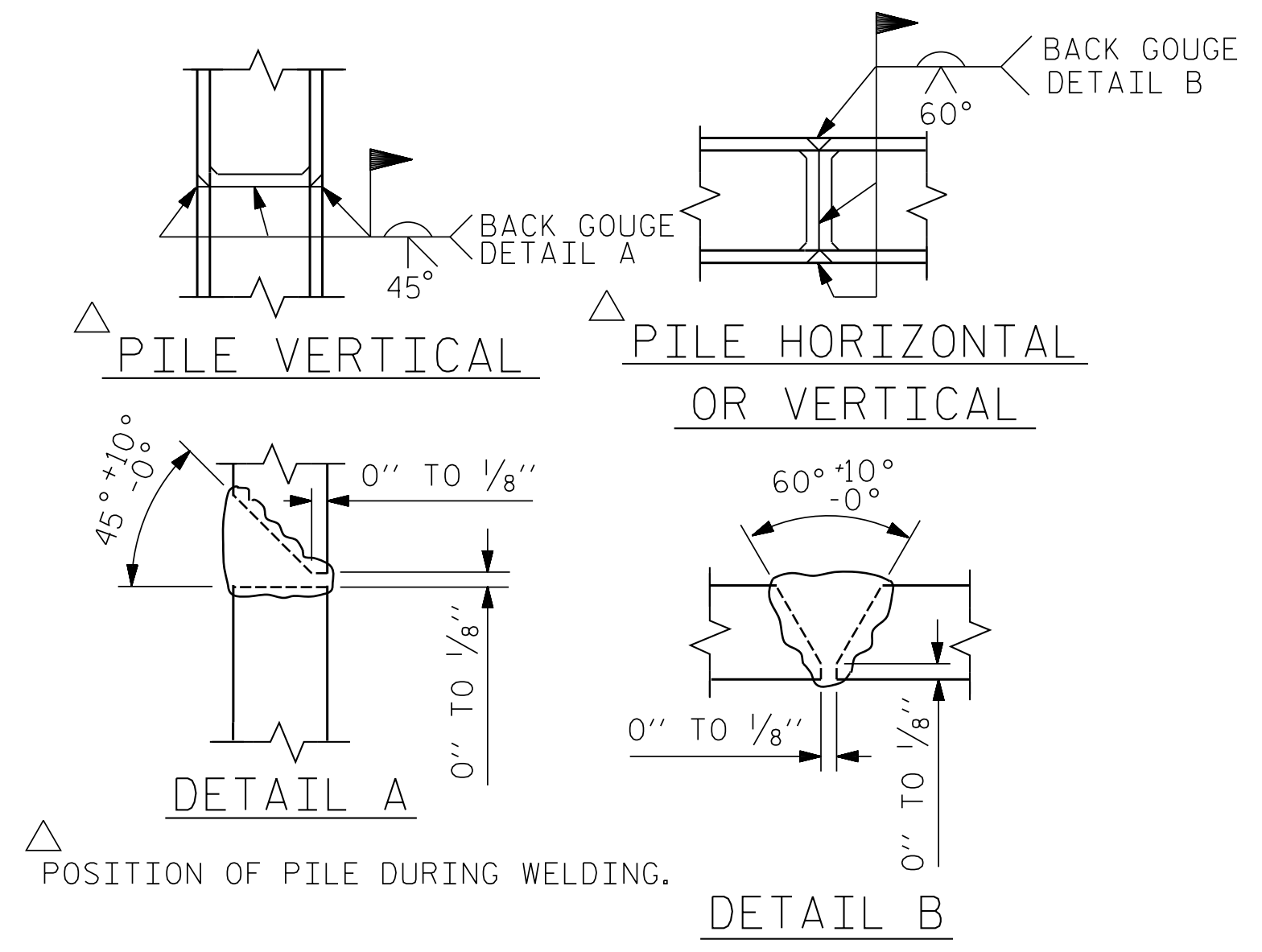


BAGGED STONE AND PIPE SHALL BE PLACED IMMEDIATELY AFTER COMPLETION OF END BENT EXCAVATION. PIPE MAY BE EITHER CONCRETE, CORRUGATED STEEL, CORRUGATED ALUMINUM ALLOY, OR CORRUGATED PLASTIC. PERFORATED PIPE WILL NOT BE ALLOWED.

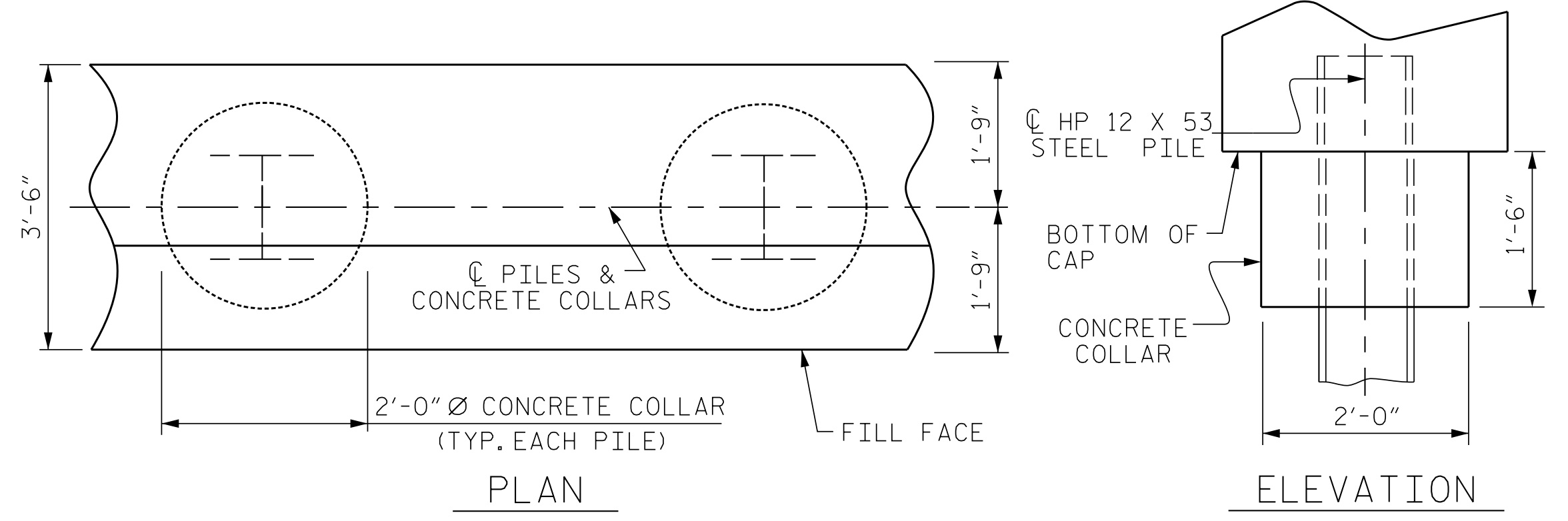
BAGGED STONE SHALL REMAIN IN PLACE UNTIL THE ENGINEER DIRECTS THAT IT BE REMOVED. THE CONTRACTOR SHALL REMOVE AND DISPOSE OF SILT ACCUMULATIONS AT BAGGED STONE WHEN SO DIRECTED BY THE ENGINEER. BAGS SHALL BE REMOVED AND REPLACED WHENEVER THE ENGINEER DETERMINES THAT THEY HAVE DETERIORATED AND LOST THEIR EFFECTIVENESS.

NO SEPARATE PAYMENT WILL BE MADE FOR THIS WORK AND THE ENTIRE COST OF THIS WORK SHALL BE INCLUDED IN THE UNIT CONTRACT PRICE BID FOR THE SEVERAL PAY ITEMS.

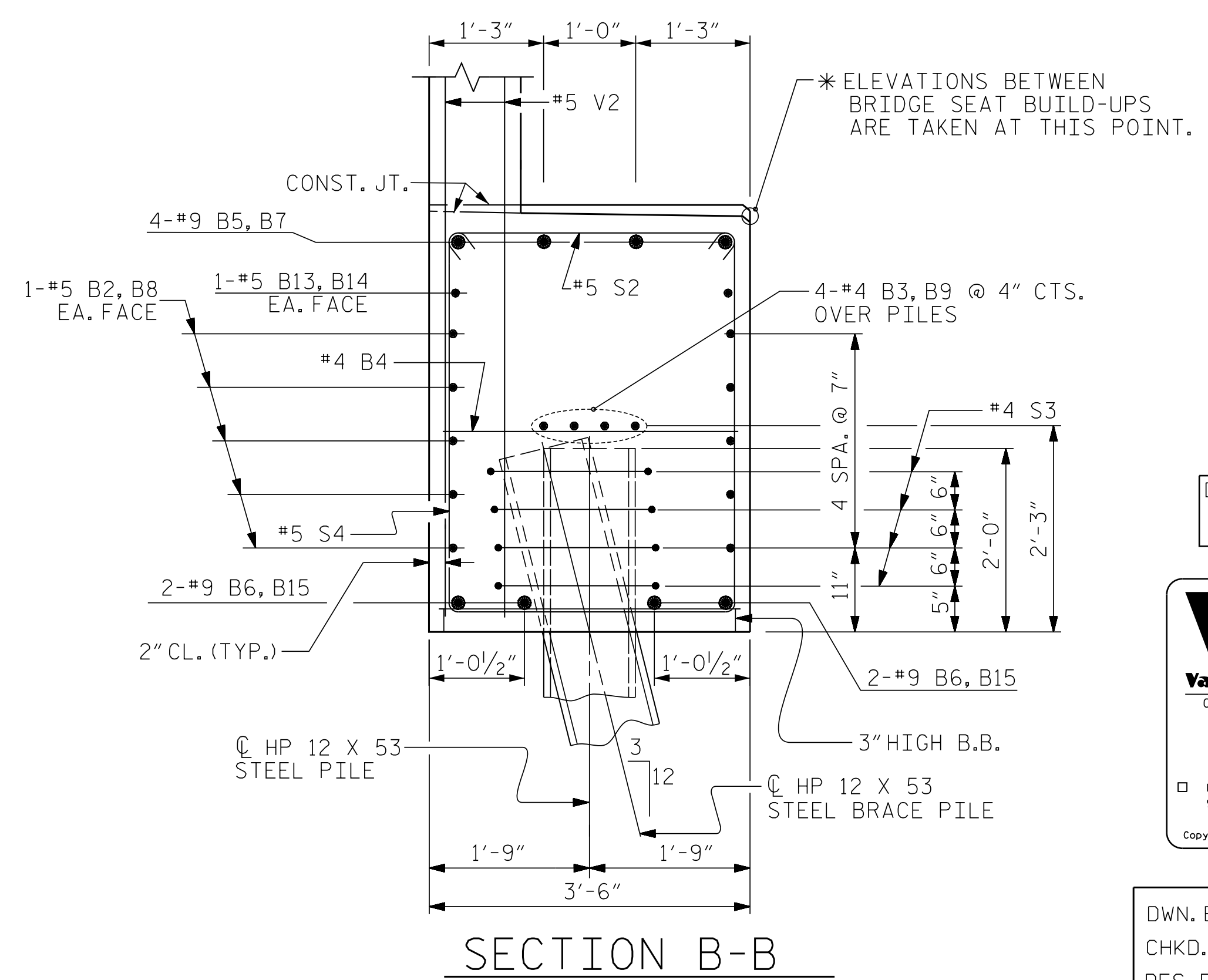
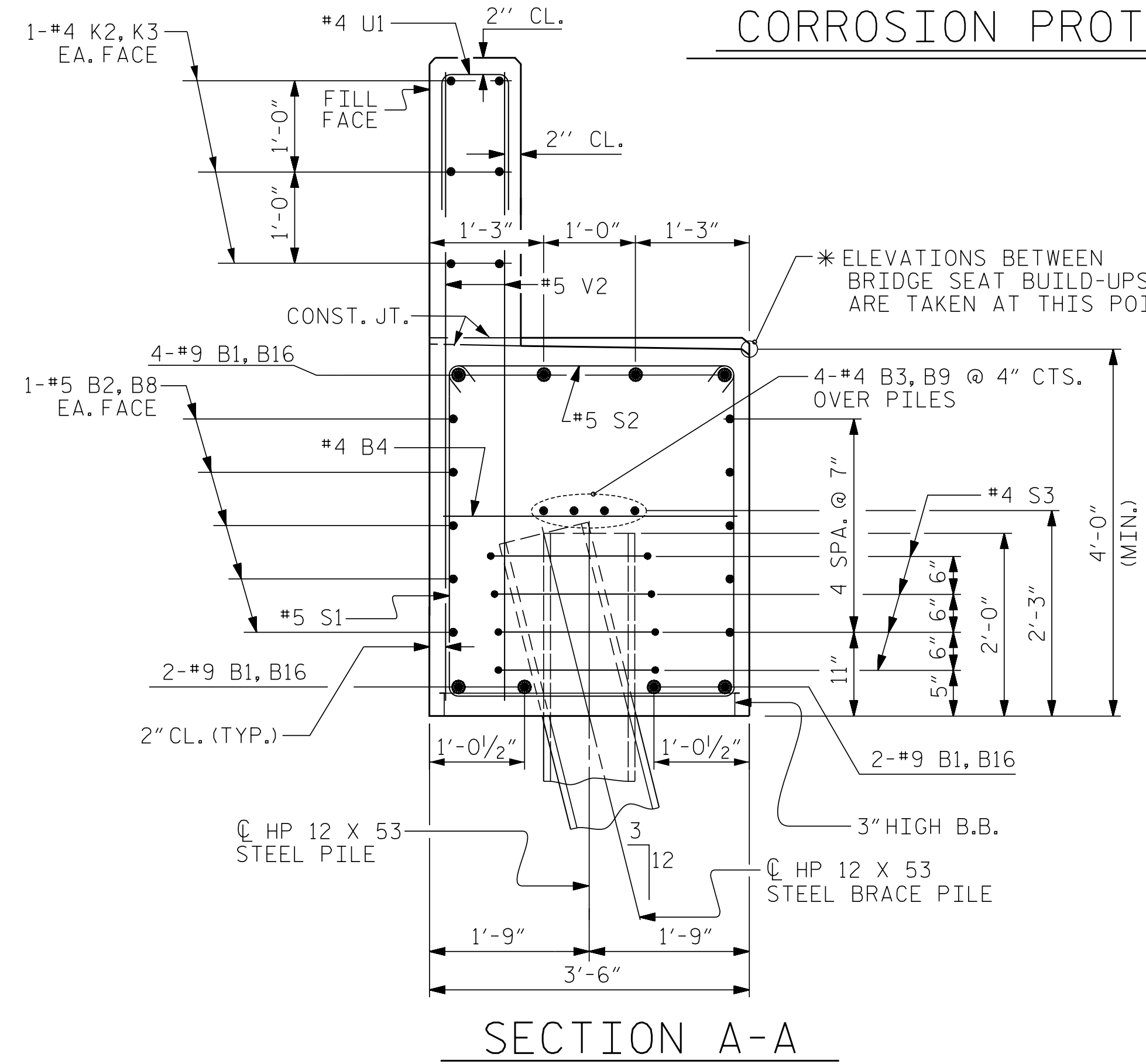
TEMPORARY DRAINAGE AT END BENT



PILE SPLICE DETAILS



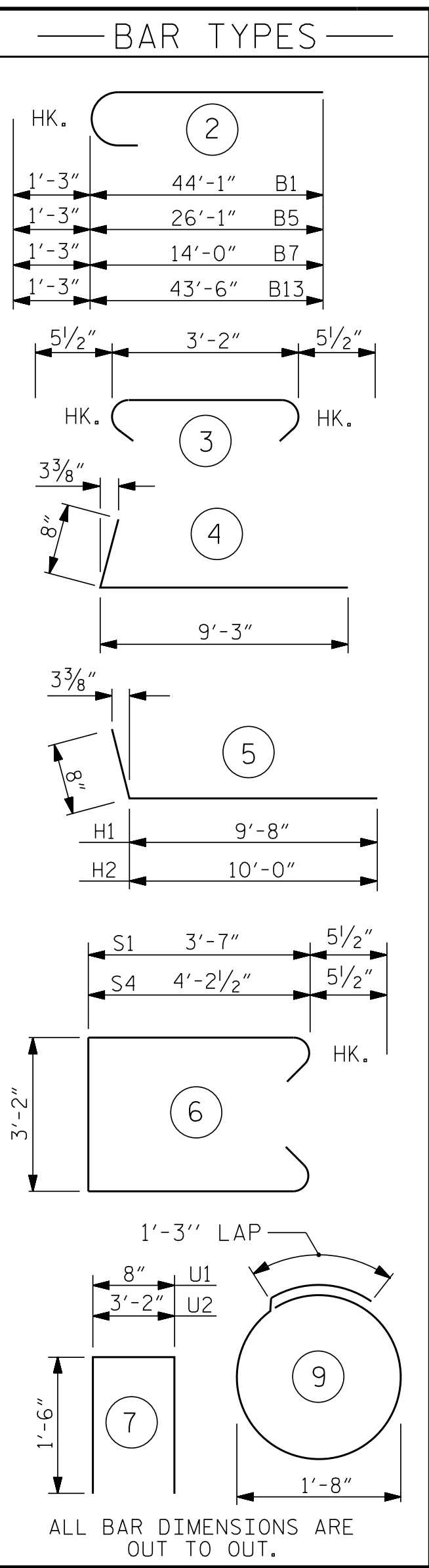
CORROSION PROTECTION FOR STEEL PILES DETAIL



BILL OF MATERIAL

END BENT 1

STAGE I					STAGE II						
BAR NO.	SIZE	TYPE	LENGTH	WEIGHT	BAR NO.	SIZE	TYPE	LENGTH	WEIGHT		
B1	8	#9	2	45'-4"	1,233	B4	17	#4	STR	3'-2"	36
B2	20	#5	STR	32'-4"	674	B7	4	#9	2	15'-3"	207
B3	12	#4	STR	21'-9"	174	B8	20	#5	STR	26'-3"	548
B4	21	#4	STR	3'-2"	44	B9	8	#4	STR	26'-0"	139
B5	4	#9	2	27'-4"	372	B11	20	#4	STR	2'-8"	36
B6	4	#9	STR	23'-1"	314	B12	4	#4	STR	12'-6"	33
B10	4	#4	STR	12'-2"	33	B14	2	#5	STR	8'-6"	18
B11	24	#4	STR	2'-8"	43	B15	4	#9	STR	12'-1"	164
B13	2	#5	STR	20'-8"	43	B16	8	#9	2	44'-9"	1,217
H1	13	#5	5	10'-4"	140	H3	26	#5	4	9'-11"	269
H2	13	#5	5	10'-8"	145	K1	4	#4	STR	4'-3"	11
K1	4	#4	STR	4'-3"	11	K3	12	#4	STR	25'-2"	202
K2	18	#4	STR	21'-4"	257	S1	31	#5	6	11'-3"	364
S1	31	#5	6	11'-3"	364	S2	44	#5	3	4'-1"	187
S2	53	#5	3	4'-1"	226	S3	24	#4	9	6'-6"	104
S3	28	#4	9	6'-6"	122	S4	13	#5	6	12'-6"	169
S4	22	#5	6	12'-6"	287	U1	44	#4	7	3'-8"	108
U1	56	#4	7	3'-8"	137	U2	15	#4	7	6'-2"	62
U2	18	#4	7	6'-2"	74	V2	88	#5	STR	6'-4"	581
V1	33	#4	STR	8'-1"	178	V3	32	#4	STR	8'-2"	175
V2	112	#5	STR	6'-4"	740						
REINFORCING STEEL 5,611 LBS.					REINFORCING STEEL 4,630 LBS.						
CLASS A CONCRETE BREAKDOWN					CLASS A CONCRETE BREAKDOWN						
POUR 1: CAP, BOT OF WINGS, PILE COLLARS 37.1 C.Y.					POUR 1: CAP, BOT OF WINGS, PILE COLLARS 30.4 C.Y.						
POUR 2: BACKWALL, UPPER PART OF WINGS 8.1 C.Y.					POUR 2: BACKWALL, UPPER PART OF WINGS 7.0 C.Y.						
TOTAL CLASS A CONCRETE 45.2 C.Y.					TOTAL CLASS A CONCRETE 37.4 C.Y.						
HP 12 X 53 STEEL PILES NO: 7 LIN. FT. = 120'-0"					HP 12 X 53 STEEL PILES NO: 6 LIN. FT. = 100'-0"						
PILE DRIVING EQUIPMENT SETUP FOR HP 12 X 53 STEEL PILES NO: 7					PILE DRIVING EQUIPMENT SETUP FOR HP 12 X 53 STEEL PILES NO: 6						
PILE POINTS NO: 7					PILE POINTS NO: 6						



DOCUMENT NOT CONSIDERED FINAL UNLESS ALL SIGNATURES COMPLETED

V&M
Vaughn & Melton
Consulting Engineers

Asheville, North Carolina
828-253-2796

Boone, NC 828-355-9933
Tri-Cities, TN 423-467-8401
Knoxville, TN 865-546-5800
Spartanburg, SC 864-574-4715
Charleston, SC 843-974-5650
Middleboro, KY 606-248-6600
Raleigh, NC 919-977-9455
Charlotte, NC 704-357-0488
Atlanta, GA 770-627-3509

Copyright © 2006 Vaughn & Melton, Inc. All Rights Reserved

PROJECT NO. U-5738

ROWAN COUNTY

STATION: 70+72.50 -L-

SHEET 4 OF 4

STATE OF NORTH CAROLINA
DEPARTMENT OF TRANSPORTATION
RALEIGH

SUBSTRUCTURE
END BENT 1
DETAILS

DWN. BY: FRJ DATE: 11/18
CHKD. BY: CDB DATE: 11/18
DES. EGR. OF RECORD: CDB DATE: 11/18

REVISIONS						SHEET NO.	
NO.	BY:	DATE:	NO.	BY:	DATE:	S-27	
1			3			TOTAL SHEETS 39	
2			4				