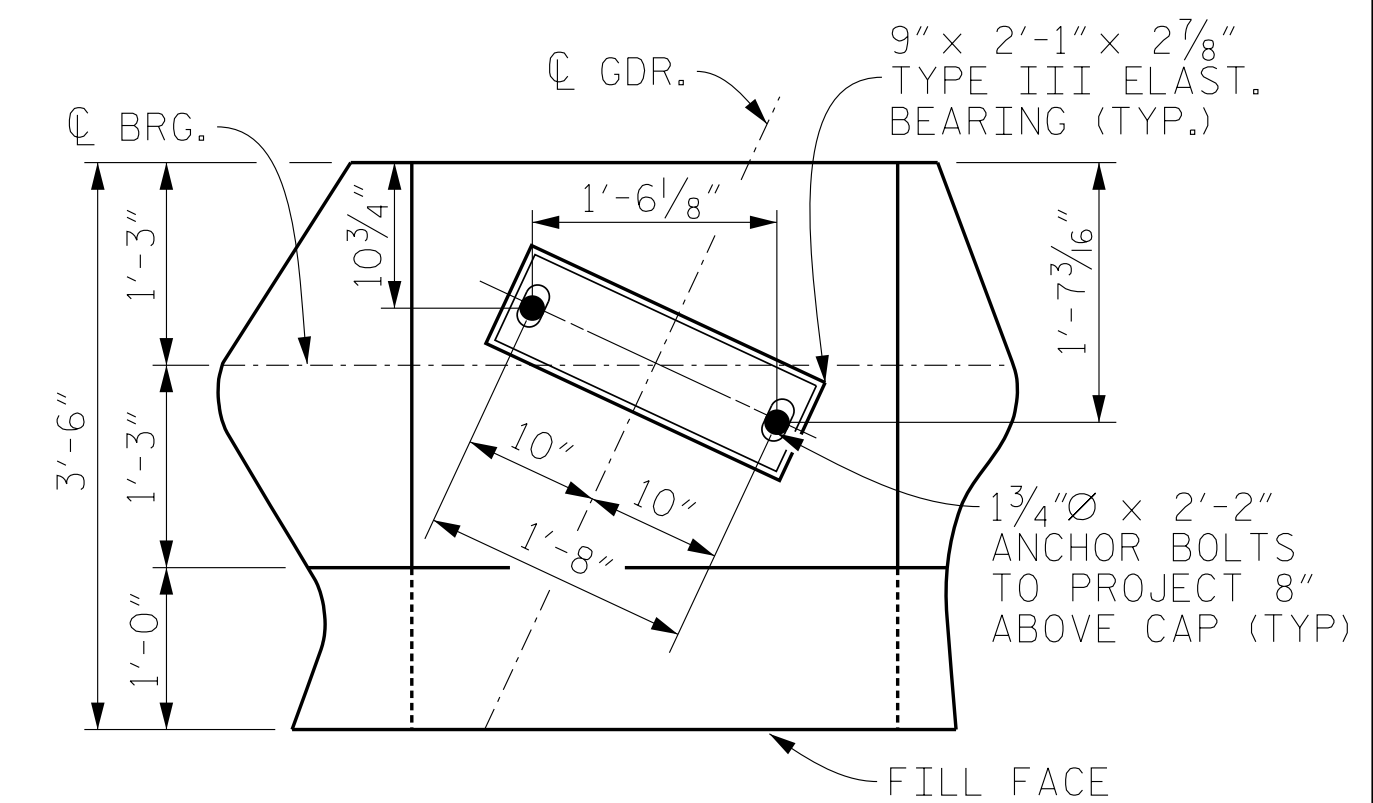
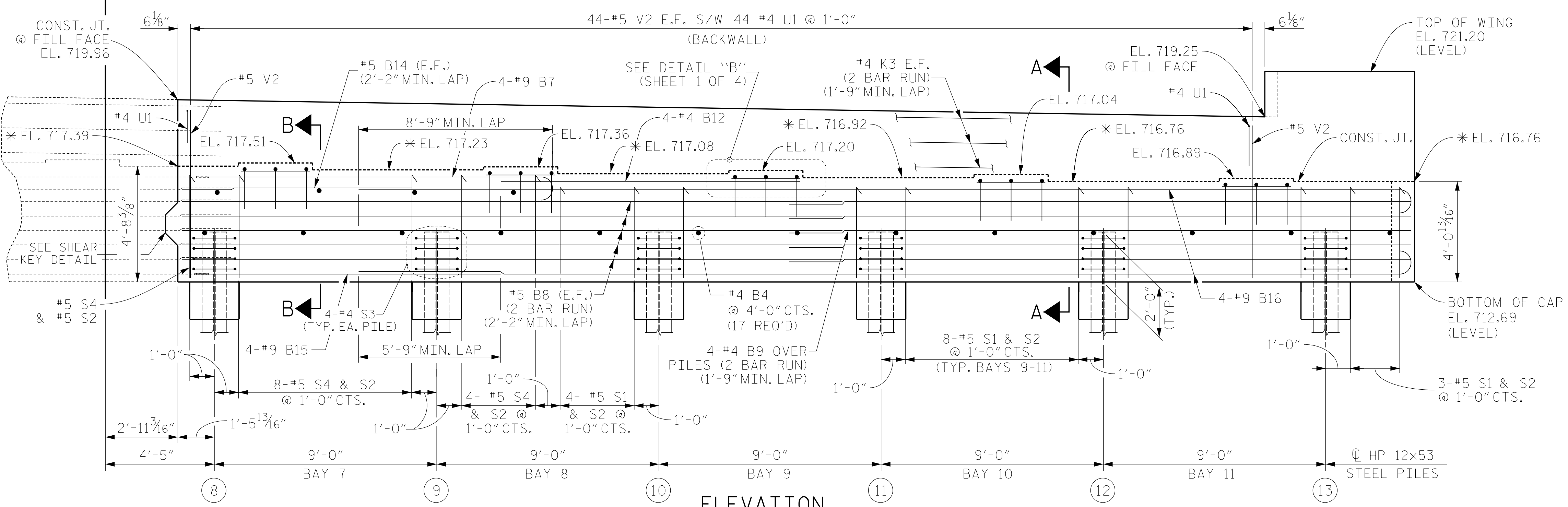


PLAN



DETAIL "A"

(DIMENSIONS ARE TYPICAL EACH GIRDER)



ELEVATION

(WING NOT SHOWN FOR CLARITY)

NOTES

- STIRRUPS IN CAPS MAY BE SHIFTED AS NECESSARY TO CLEAR ANCHOR BOLTS.
- BACKWALL SHALL BE PLACED BEFORE APPLYING THE EPOXY PROTECTIVE COATING.
- EPOXY COAT THE END BENT CAP AFTER ADJUSTMENTS ARE MADE TO BEARINGS AND ANCHOR BOLTS ARE PLACED.
- \* THE TOP SURFACE OF THE CAP EXCEPT THE BRIDGE SEAT BUILDUPS SHALL BE SLOPED TRANSVERSELY FROM THE FILL FACE TO THE BACK FACE AT THE RATE OF 2%.
- THE TOP SURFACE AREAS OF THE CAPS SHALL BE CURED IN ACCORDANCE WITH THE STANDARD SPECIFICATIONS EXCEPT THE MEMBRANE CURING METHOD SHALL NOT BE USED.

**V&M**  
Vaughn & Melton  
Consulting Engineers  
Asheville, NC  
1111 North Carolina  
828-253-2796

PROJECT NO. U-5738  
ROWAN COUNTY  
STATION: 70+72.50 -L-  
SHEET 2 OF 4

STATE OF NORTH CAROLINA  
DEPARTMENT OF TRANSPORTATION  
RALEIGH  
SUBSTRUCTURE  
END BENT 1  
STAGE II



DOCUMENT NOT CONSIDERED FINAL UNLESS ALL SIGNATURES COMPLETED		DWN. BY: FRJ	DATE: 11/18	SHEET NO. S-25	
		CHKD. BY: CDB	DATE: 11/18	TOTAL SHEETS 39	
		DES. EGR. OF RECORD: CDB	DATE: 11/18		
REVISIONS					
NO.	BY:	DATE:	NO.	BY:	DATE:
1			3		
2			4		