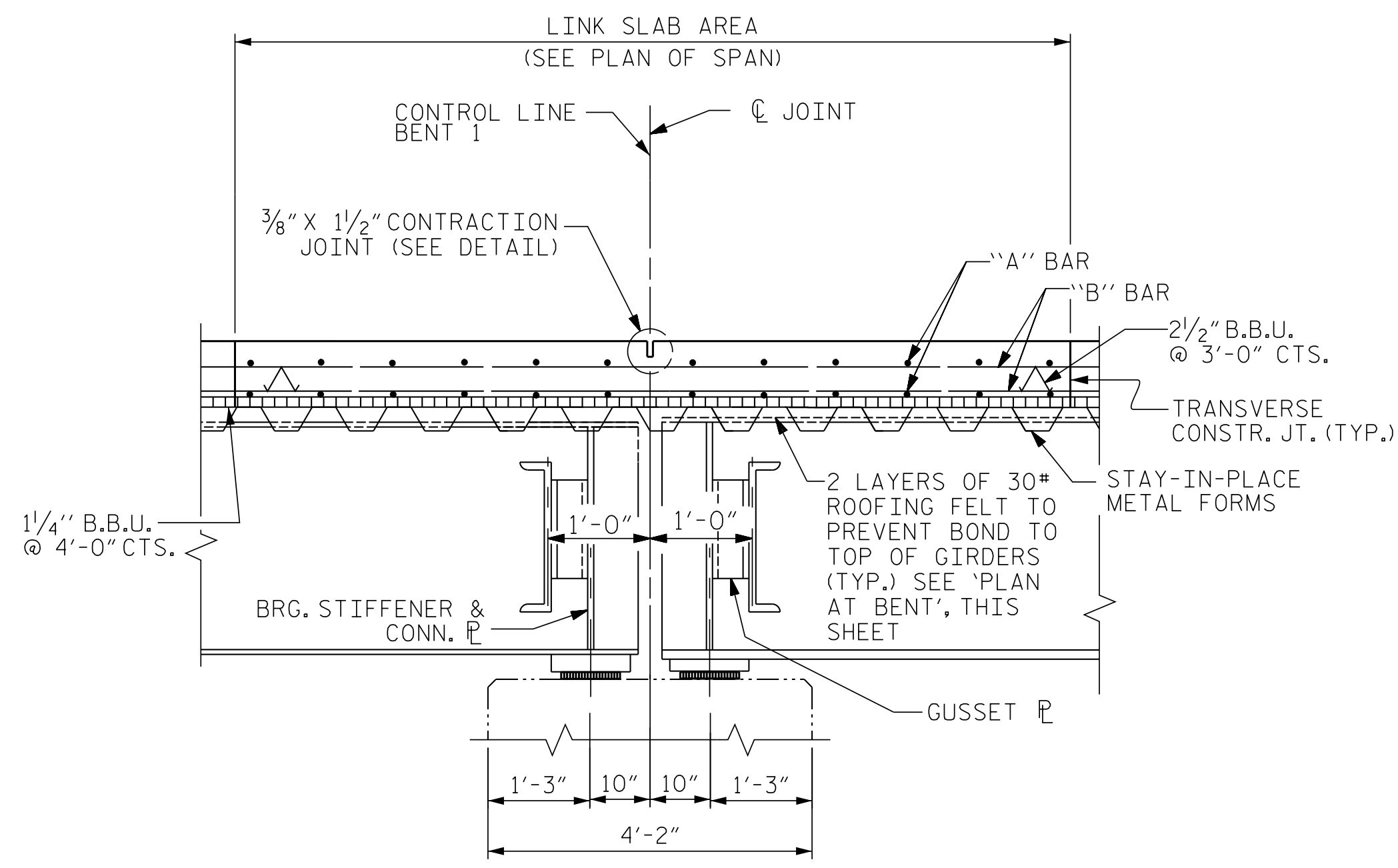


SECTION AT END BENT 1

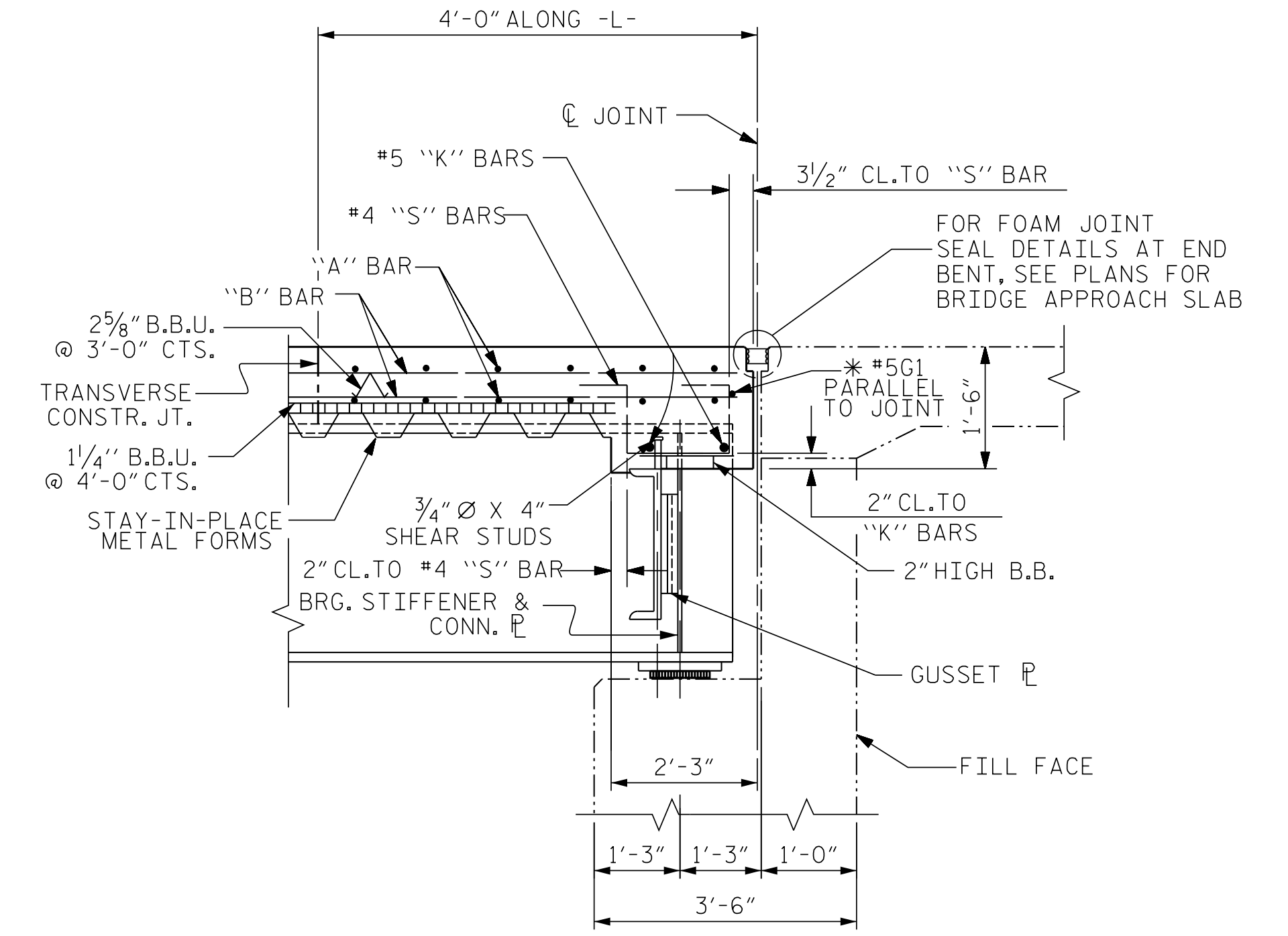
* #5 GI BAR MAY BE SHIFTED SLIGHTLY, AS NECESSARY, TO CLEAR DIAPHRAGM AND REINFORCING STEEL.



SECTION THRU BENT 1

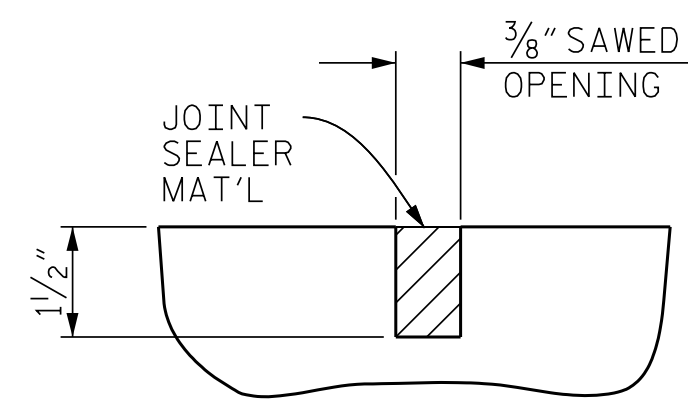
A 3/8" X 1/2" DEEP CONTRACTION JOINT AT BENT CONTROL LINE SHALL BE SAWN WITHIN 24 HOURS OF POURING THE DECK. THE JOINT SHALL BE FILLED WITH JOINT SEALER MATERIAL. THE JOINT SEALER MATERIAL SHALL CONFORM TO THE REQUIREMENTS OF TYPE B LOW MODULUS SILICONE SEALANT. SEE SECTION 1028 OF THE STANDARD SPECIFICATIONS.

NO WELDING OF FORMS OR FALSEWORK TO THE TOP OF THE GIRDER WILL BE PERMITTED IN THE LINK SLAB AREA.

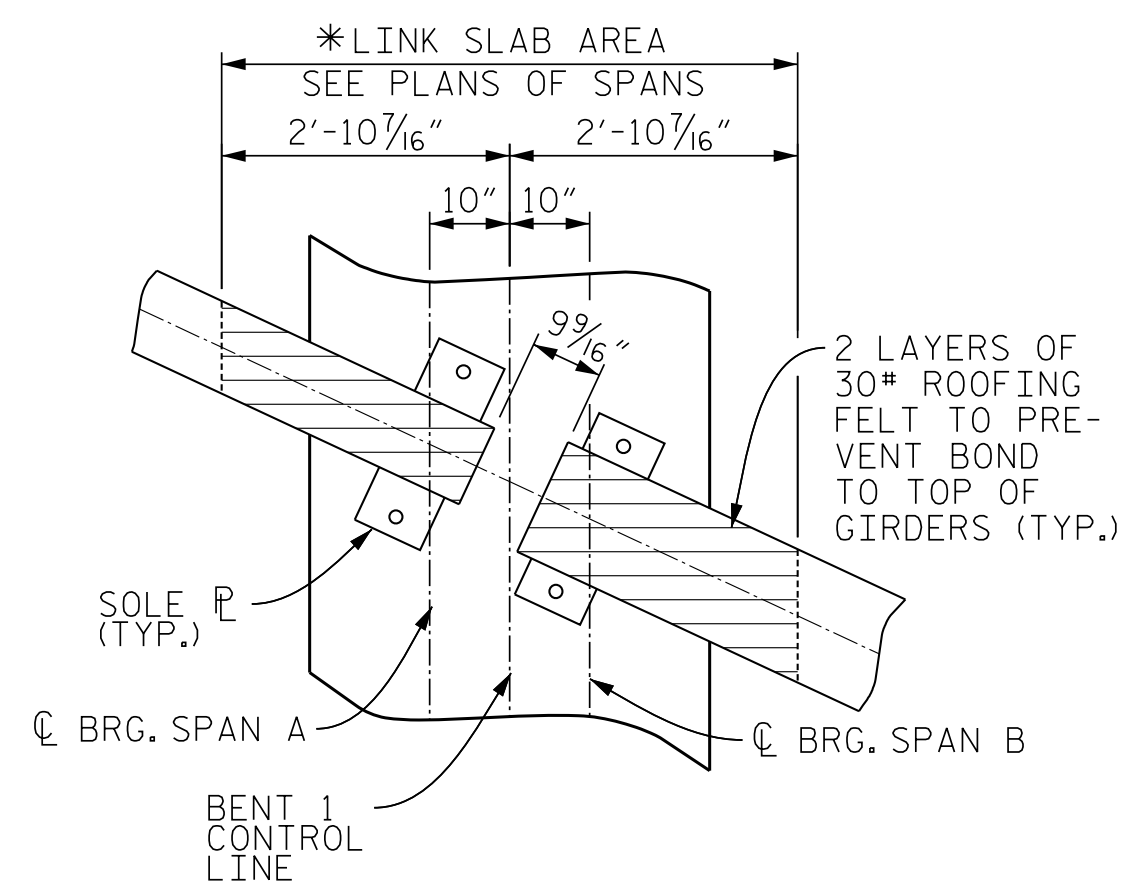


SECTION AT END BENT 2

* #5 GI BAR MAY BE SHIFTED SLIGHTLY, AS NECESSARY, TO CLEAR DIAPHRAGM AND REINFORCING STEEL.

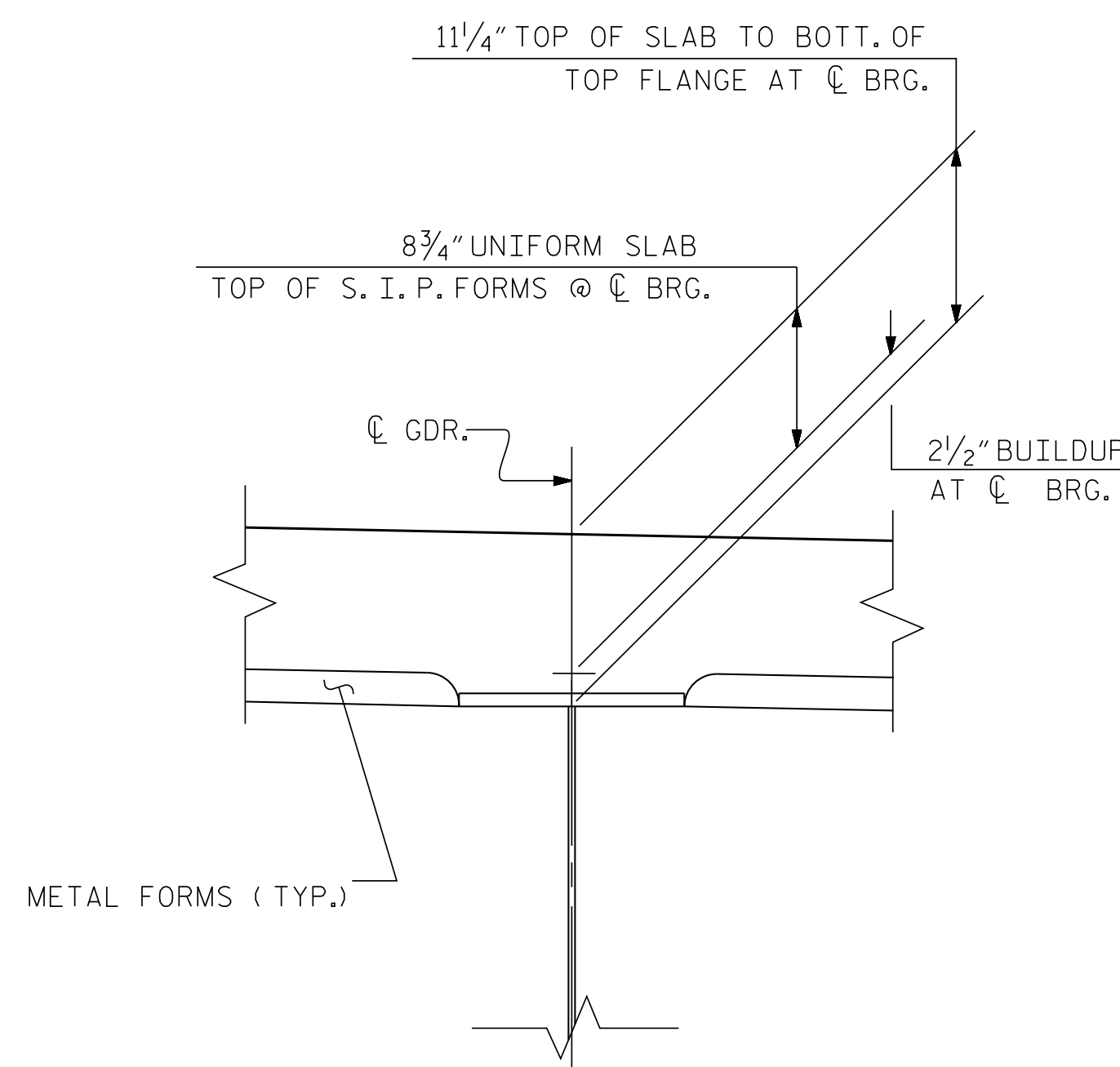


CONTRACTION JOINT DETAIL



PLAN AT BENT

* NO WELDING OF FORMS OR FALSEWORK TO THE TOP OF GIRDER WILL BE PERMITTED IN THE LINK SLAB AREA



SLAB DETAIL

NOTES

PROVIDE 1/4" BEAM BOLSTERS UPPER AT 4'-0" CENTERS ATOP THE METAL STAY-IN-PLACE FORMS TO SUPPORT THE BOTTOM MAT OF 'A' BARS.

CONCRETE PARAPET, SIDEWALK, AND MEDIAN BARRIER IN A CONTINUOUS UNIT SHALL NOT BE CAST UNTIL ALL SLAB CONCRETE HAS BEEN CAST AND HAS ATTAINED A MINIMUM COMPRESSIVE STRENGTH OF 3,000 PSI.

THE CONTRACTOR MAY, WHEN NECESSARY, PROPOSE A SCHEME FOR AVOIDING INTERFERENCE BETWEEN METAL STAY-IN-PLACE FORM SUPPORTS OR FORMS AND GIRDER STIFFENERS OR CONNECTOR PLATES. THE PROPOSAL SHALL BE INDICATED, AS APPROPRIATE, ON EITHER THE STEEL WORKING DRAWINGS OR THE METAL STAY-IN-PLACE FORM WORKING DRAWINGS.

DOWELS SHALL BE PLACED IN THE SAME HORIZONTAL PLANE AS THE TOP AND BOTTOM SLAB REINFORCEMENT STEEL.

STRUCTURAL STEEL ERECTION IN A CONTINUOUS UNIT SHALL BE COMPLETE BEFORE FALSEWORK OR FORMS ARE PLACED ON THE UNIT.

SEE "SECTION THRU SIDEWALK" FOR SIDEWALK REINFORCING AND RUSTICATION GROOVE DETAILS.

SEE "SECTION THRU RAISED MEDIAN" FOR MEDIAN REINFORCING DETAILS.

FOR END RAIL POST AND PARAPET REINFORCING, SEE THREE BAR METAL RAIL DETAILS

PROJECT NO. U-5738

ROWAN COUNTY

STATION: 70+72.50 -L-

SHEET 2 OF 2

STATE OF NORTH CAROLINA
DEPARTMENT OF TRANSPORTATION
RALEIGH

SUPERSTRUCTURE
TYPICAL SECTION
DETAILS



12/13/2021

DOCUMENT NOT CONSIDERED
FINAL UNLESS ALL
SIGNATURES COMPLETED

DWN. BY: FRJ	DATE: 11/18
CHKD. BY: CDB	DATE: 11/18
DES. EGR. OF RECORD: CDB	DATE: 11/18

REVISIONS					
NO.	BY:	DATE:	NO.	BY:	DATE:
1			3		
2			4		

SHEET NO. S-7
TOTAL SHEETS 39