

|          | -Y5-              | -Y6-              | -Y8-               |
|----------|-------------------|-------------------|--------------------|
| PI Sta   | 11+43.82          | 13+34.35          | 11+79.45           |
| $\Delta$ | 4' 11" 10.4" (LT) | 8' 43" 35.1" (LT) | 85' 43" 30.8" (RT) |
| D        | 1' 27" 21.7"      | 9' 20" 01.6"      | 8' 51" 04.0"       |
| L        | 287.51'           | 93.49'            | 104.73'            |
| T        | 143.82'           | 46.84'            | 64.96'             |
| R        | 3,935.07'         | 613.85'           | 70.00'             |

Utilize Special Stilling Basin(s) as Stilling Basin(s) where Required for Installation of Drilled Shafts.

NAD 83 NA 2011

BEGIN CONSTRUCTION  
-Y5- POT Sta. 10+65.00

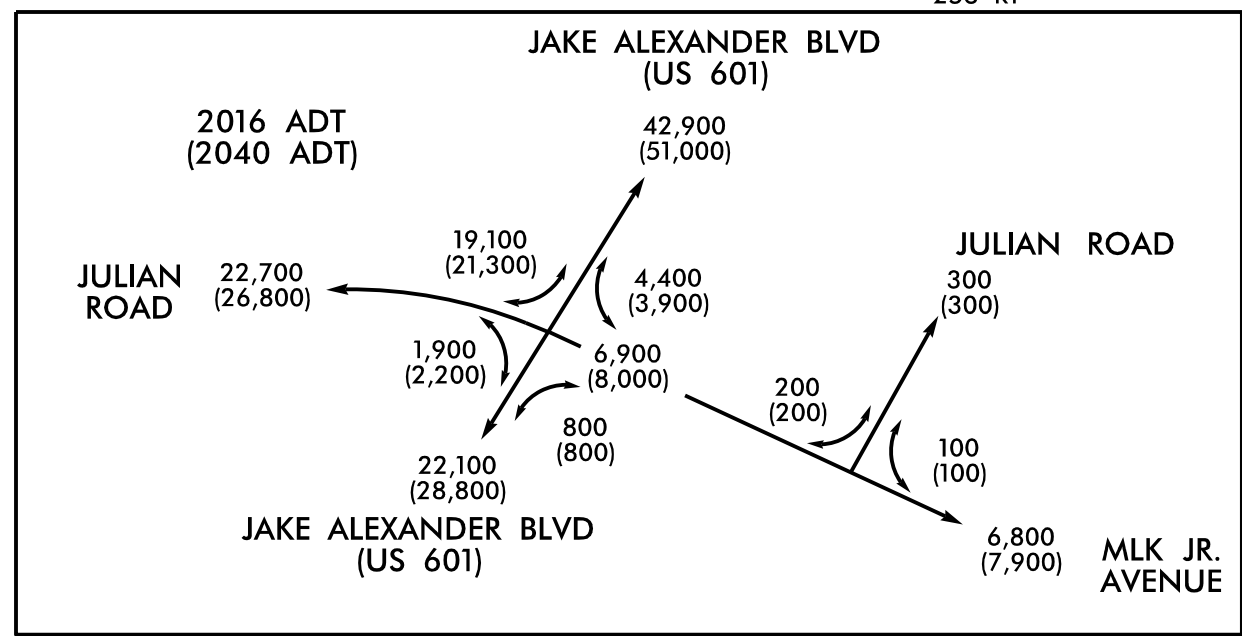
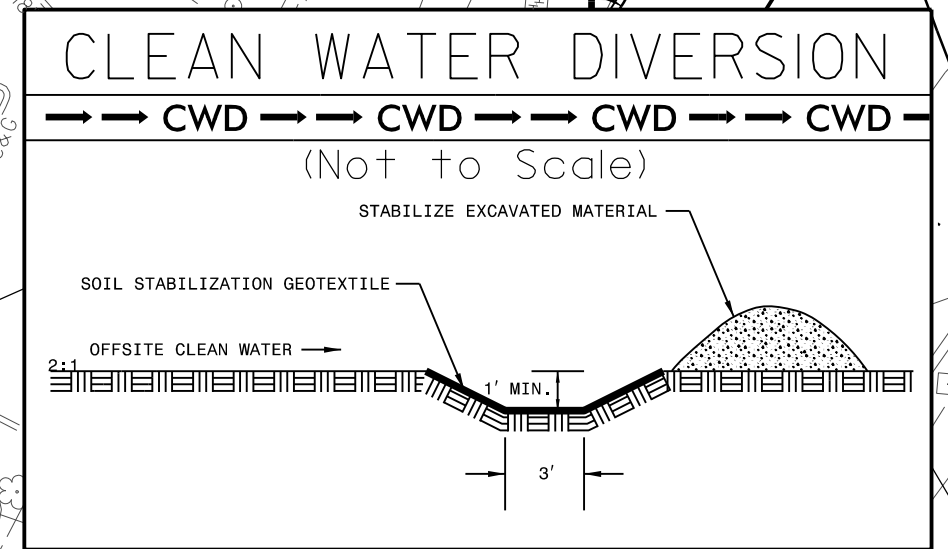
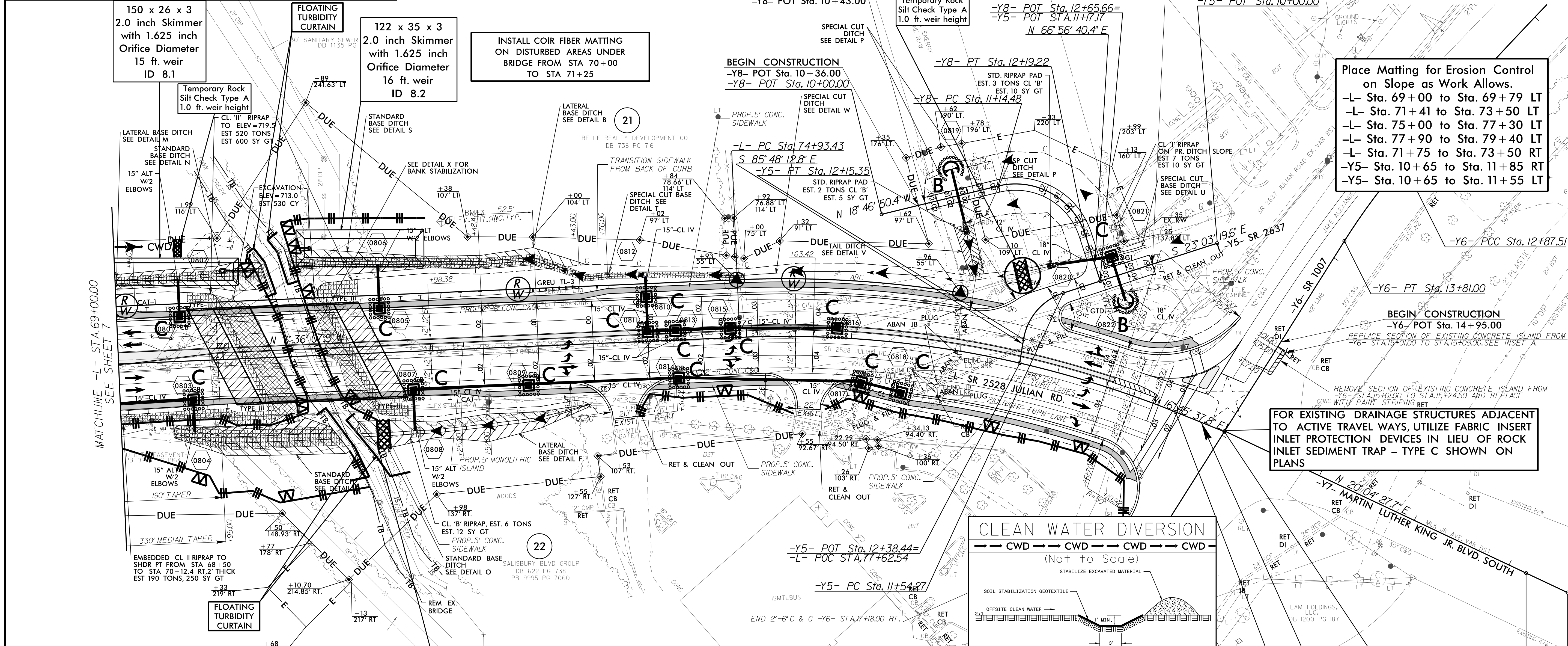
**RELEASE FOR CONSTRUCTION DATE:** \_\_\_\_\_

150 x 26 x 3  
2.0 inch Skimmer  
with 1.625 inch  
Orifice Diameter  
15 ft. weir  
ID 8.1

FLOATING TURBIDITY CURTAIN  
122 x 35 x 3  
2.0 inch Skimmer  
with 1.625 inch  
Orifice Diameter  
16 ft. weir  
ID 8.2

INSTALL COIR FIBER MATTING  
ON DISTURBED AREAS UNDER  
BRIDGE FROM STA 70+00  
TO STA 71+25

Place Matting for Erosion Control  
on Slope as Work Allows.  
-L- Sta. 69+00 to Sta. 69+79 LT  
-L- Sta. 71+41 to Sta. 73+50 LT  
-L- Sta. 75+00 to Sta. 77+30 LT  
-L- Sta. 77+90 to Sta. 79+40 LT  
-L- Sta. 71+75 to Sta. 73+50 RT  
-Y5- Sta. 10+65 to Sta. 11+85 RT  
-Y5- Sta. 10+65 to Sta. 11+55 LT



CURB & GUTTER PAN CROSS SLOPE TO MATCH ROADWAY CROSS SLOPE:  
-L- STA 75+63.4 LT TO STA 79+18.6 LT

NOTE:  
PIPES LABELED TO BE REMOVED MAY BE FILLED W/ FLOWABLE FILL  
AND ABANDONED AT THE NCDOT FIELD ENGINEER'S DISCRETION.

NOTE:  
IN SYSTEMS TO BE PLUGGED AND FILLED W/ FLOWABLE FILL, REMOVE  
STRUCTURES. ALTERNATELY, REMOVE TOPS OF STRUCTURES TO ELEV.  
OF BOTTOM OF AGGREGATE ROADWAY BASE, AND FILL W/ COMPACTED  
ABC OR FLOWABLE FILL AT NCDOT FIELD ENGINEER'S DISCRETION.

Ensure Proposed Ditch  
from Sta. 69+50 to Sta. 71+15 RT  
is Completely Stabilized with Vegetation  
prior to bringing ditch on-line in  
final phase.

Ensure Proposed Ditch  
from Sta. 71+50 to Sta. 73+50 RT  
is Completely Stabilized with Vegetation  
prior to bringing ditch on-line in  
final phase.

SEE SHEET 12 FOR -L- PROFILE  
SEE SHEET 14 FOR -Y5- PROFILE  
SEE SHEET 14 FOR -Y8- PROFILE  
SEE SHEET 2D-1 FOR DRAINAGE DITCH DETAILS  
SEE SHEETS S-1 THRU S-?? FOR STRUCTURE PLANS

EXISTING TRAFFIC SIGNAL

END TIP PROJECT U-5738  
-L- POT STA. 79+45.00

END CONSTRUCTION  
-Y6- POT Sta. 17+18.00

-Y7- POT Sta. 13+61.64

REVISIONS

8/17/99  
1/2/2017  
U5738/171026220 U5738/Roadside/CADD/PSH/JH/738\_Rdy\_EC\_14.dgn