



RELEASE FOR CONSTRUCTION DATE: _____

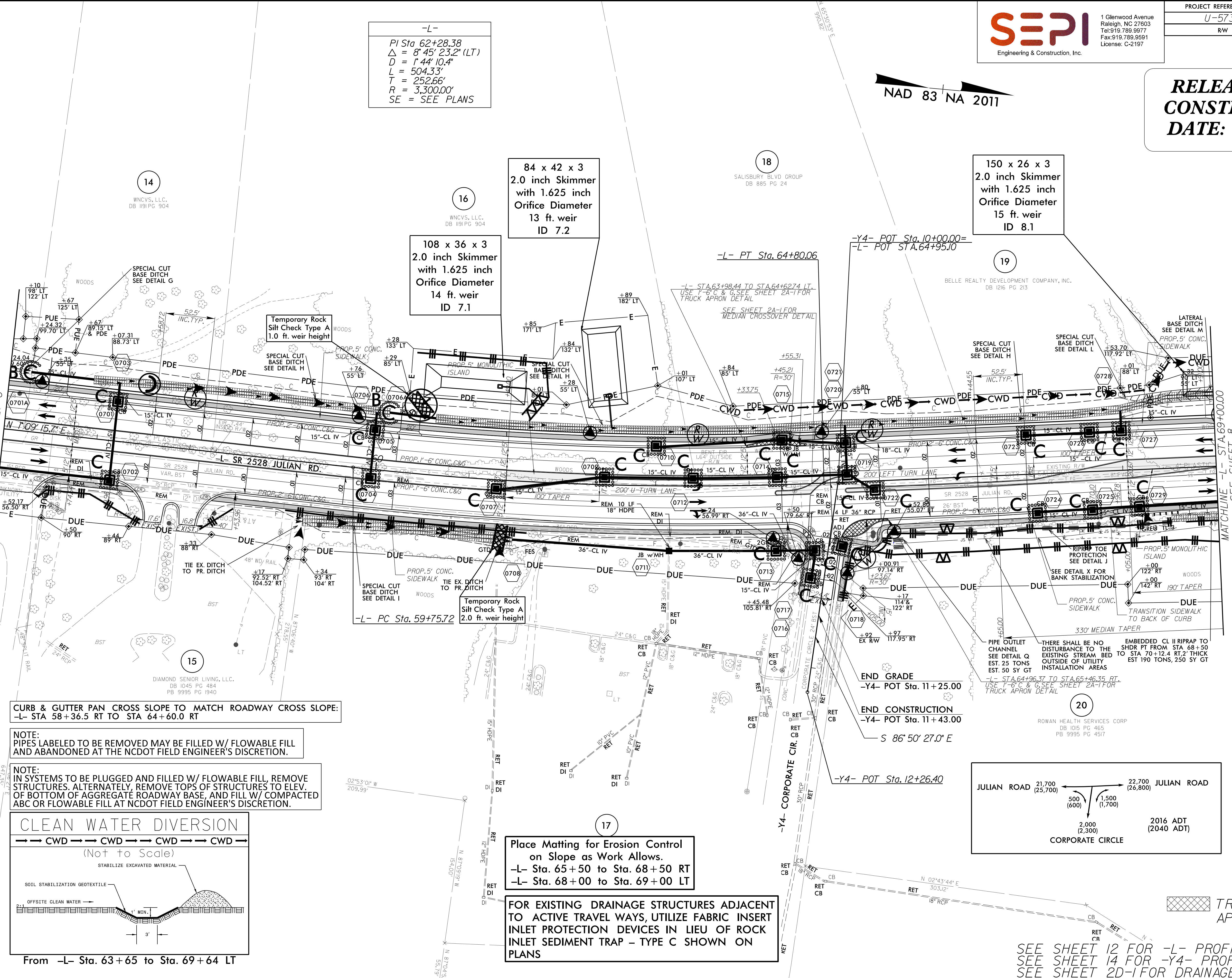
NAD 83 NA 2011

-L-
PI Sta 62+28.38
Δ = 8' 45" 23.2" (LT)
D = 1' 44" 10.4"
L = 504.33'
T = 252.66'
R = 3,300.00'
SE = SEE PLANS

84 x 42 x 3
2.0 inch Skimmer
with 1.625 inch
Orifice Diameter
13 ft. weir
ID 7.2

150 x 26 x 3
2.0 inch Skimmer
with 1.625 inch
Orifice Diameter
15 ft. weir
ID 8.1

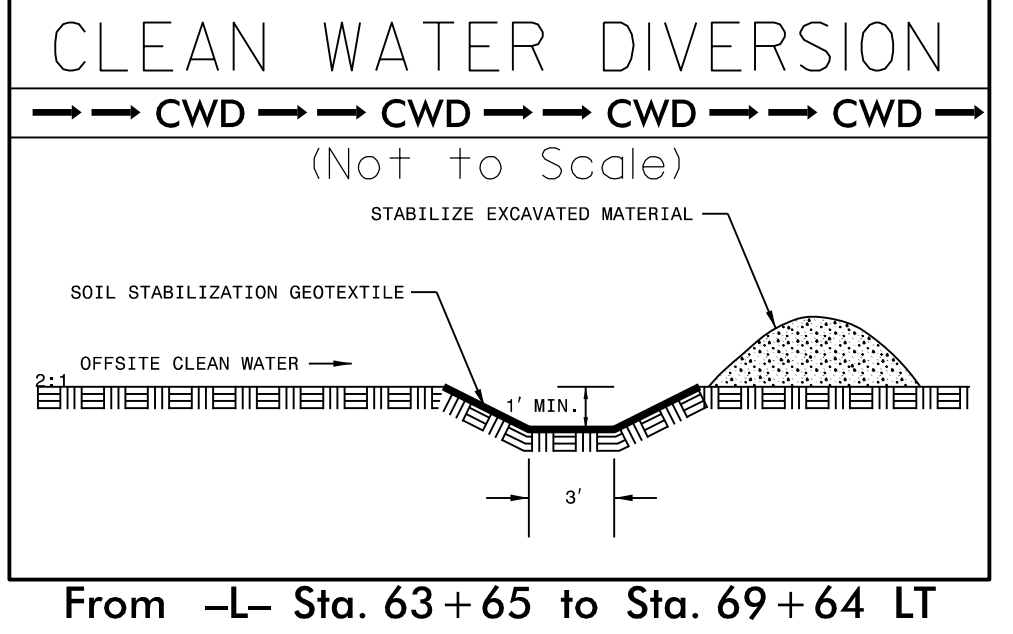
108 x 36 x 3
2.0 inch Skimmer
with 1.625 inch
Orifice Diameter
14 ft. weir
ID 7.1



CURB & GUTTER PAN CROSS SLOPE TO MATCH ROADWAY CROSS SLOPE:
-L- STA 58+36.5 RT TO STA 64+60.0 RT

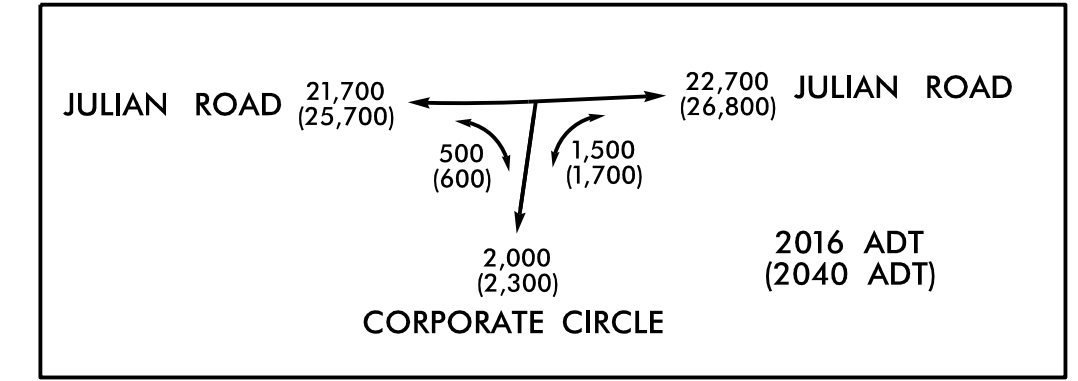
NOTE:
PIPES LABELED TO BE REMOVED MAY BE FILLED W/ FLOWABLE FILL AND ABANDONED AT THE NCDOT FIELD ENGINEER'S DISCRETION.

NOTE:
IN SYSTEMS TO BE PLUGGED AND FILLED W/ FLOWABLE FILL, REMOVE STRUCTURES. ALTERNATELY, REMOVE TOPS OF STRUCTURES TO ELEV. OF BOTTOM OF AGGREGATE ROADWAY BASE, AND FILL W/ COMPACTED ABC OR FLOWABLE FILL AT NCDOT FIELD ENGINEER'S DISCRETION.



Place Matting for Erosion Control on Slope as Work Allows.
-L- Sta. 65+50 to Sta. 68+50 RT
-L- Sta. 68+00 to Sta. 69+00 LT

FOR EXISTING DRAINAGE STRUCTURES ADJACENT TO ACTIVE TRAVEL WAYS, UTILIZE FABRIC INSERT INLET PROTECTION DEVICES IN LIEU OF ROCK INLET SEDIMENT TRAP - TYPE C SHOWN ON PLANS



REVISIONS

8/17/99

M:\2\2017\17102620_U5738\Roadside\CADD\PSH\U5738_Rd.dwg EC-13.dgn

SEE SHEET 12 FOR -L- PROFILE
SEE SHEET 14 FOR -Y4- PROFILE
SEE SHEET 2D-I FOR DRAINAGE DITCH DETAILS