

**RELEASE FOR CONSTRUCTION DATE:** \_\_\_\_\_

NAD 83 NA 2011

**-L-**  
PI Sta 48+69.14  
Δ = 33° 28' 00.8" (RT)  
D = 3' 49' 11.0"  
L = 876.16'  
T = 450.98'  
R = 1,500.00'  
SE = SEE PLANS

**-Y2-**  
PI Sta 11+34.85  
Δ = 54° 35' 25.0" (RT)  
D = 49' 49' 20.7"  
L = 109.57'  
T = 59.34'  
R = 115.00'  
SE = SEE PLANS

**-Y3-** POT Sta. 10+00.00  
BEGIN CONSTRUCTION  
-Y3- POT Sta. 10+30.00  
  
BEGIN GRADE  
-Y3- POT Sta. 10+75.00

BEGIN CONSTRUCTION  
-Y2- POC Sta. 10+80.00

Temporary Rock Silt Check Type A  
2.25 ft. weir height  
PILE OF STONE  
EST 30 TONS CL 'B'  
EST 55 SY GT  
TIE FUT. Y5500 DITCH TO U-5738 DITCH (PER Y5500 PLANS)

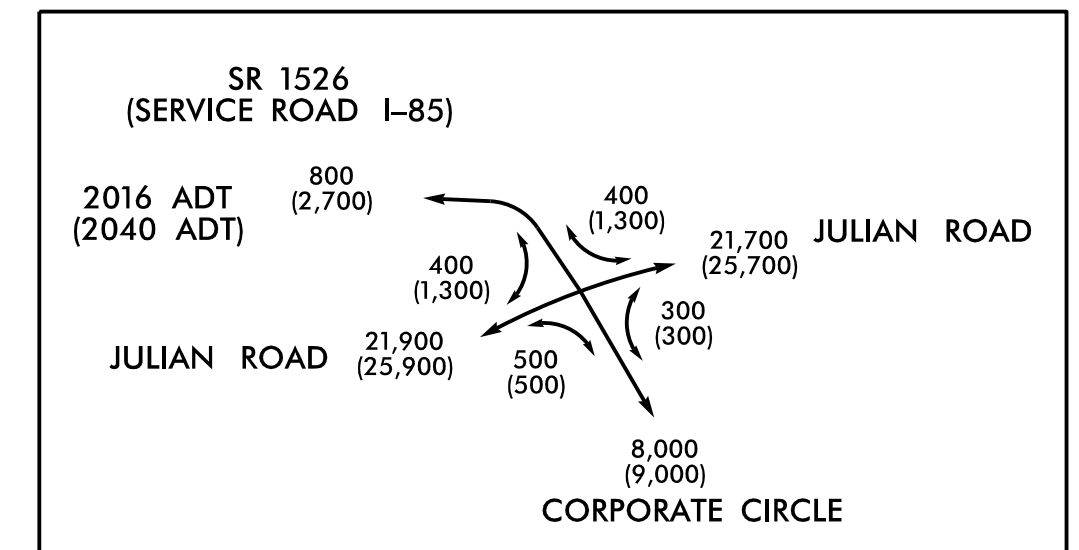
FOR EXISTING DRAINAGE STRUCTURES ADJACENT TO ACTIVE TRAVEL WAYS, UTILIZE FABRIC INLET PROTECTION DEVICES IN LIEU OF ROCK INLET SEDIMENT TRAP - TYPE C SHOWN ON PLANS

Place Matting for Erosion Control on Slope as Work Allows.  
-L- Sta. 42+50 to Sta. 45+80 RT  
-L- Sta. 42+50 to Sta. 50+00 LT

CURB & GUTTER PAN CROSS SLOPE TO MATCH ROADWAY CROSS SLOPE:  
-L- STA 44+81.2 LT TO STA 53+62.6 LT

NOTE:  
PIPES LABELED TO BE REMOVED MAY BE FILLED W/ FLOWABLE FILL AND ABANDONED AT THE NCDOT FIELD ENGINEER'S DISCRETION.

NOTE:  
IN SYSTEMS TO BE PLUGGED AND FILLED W/ FLOWABLE FILL, REMOVE STRUCTURES. ALTERNATELY, REMOVE TOPS OF STRUCTURES TO ELEV. OF BOTTOM OF AGGREGATE ROADWAY BASE, AND FILL W/ COMPACTED ABC OR FLOWABLE FILL AT NCDOT FIELD ENGINEER'S DISCRETION.



SEE SHEET 11 FOR -L- PROFILE  
SEE SHEET 13 FOR -Y2- PROFILE  
SEE SHEET 13 FOR -Y3- PROFILE  
SEE SHEET 2D-1 FOR DRAINAGE DITCH DETAILS

★ PROPOSED TRAFFIC SIGNAL

REVISIONS

8/17/99  
U-5738-Roadside-CADD\PSHY\U-5738-Rdy-EC-12.dgn  
1/2/2017 17102620

