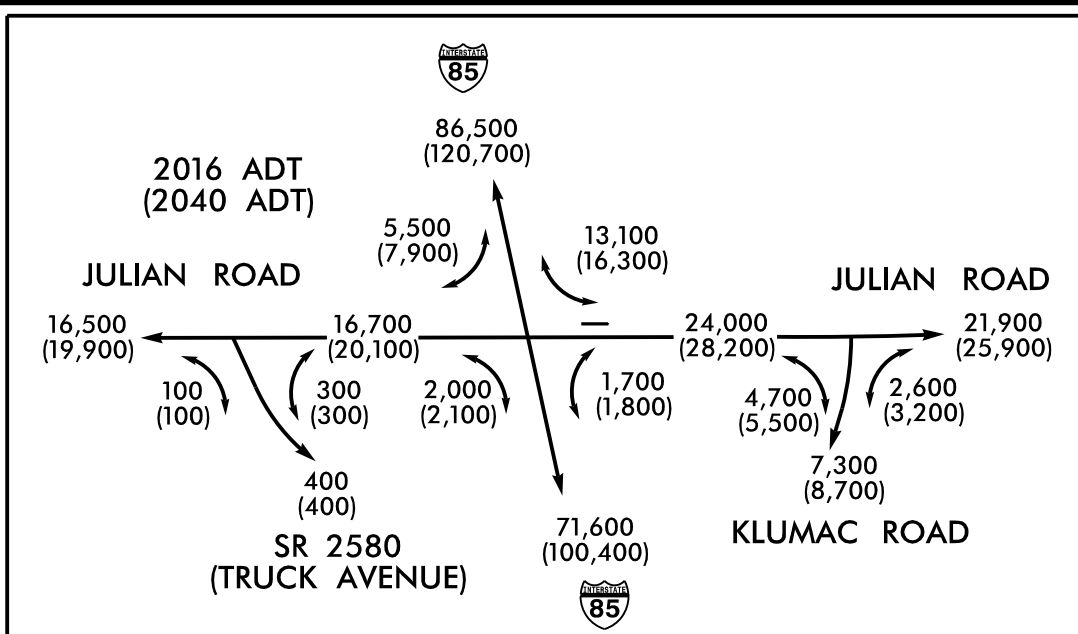




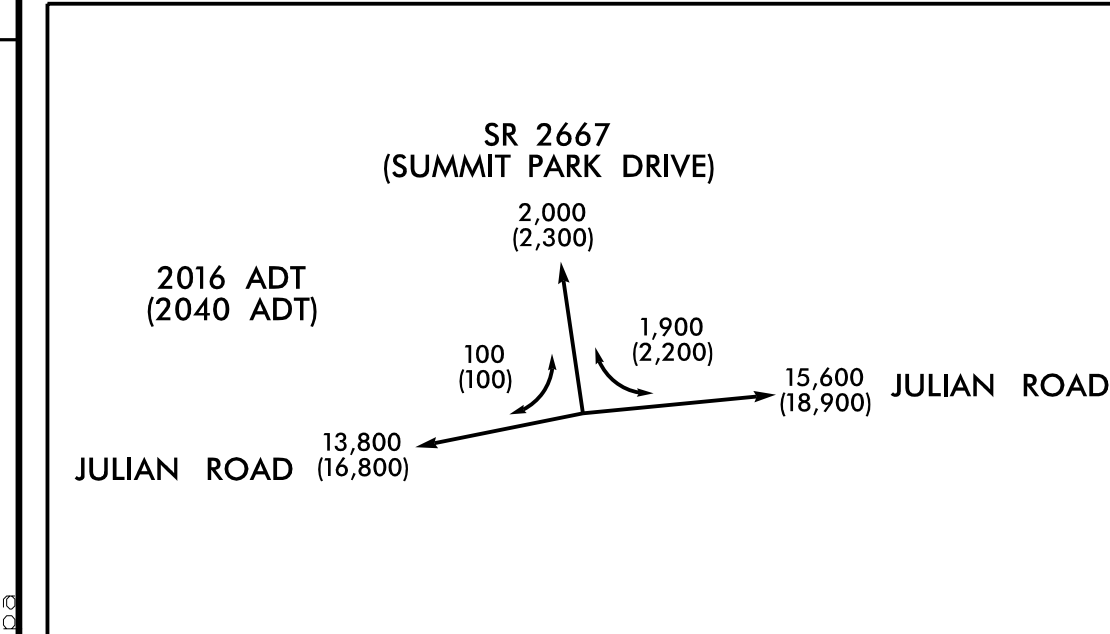
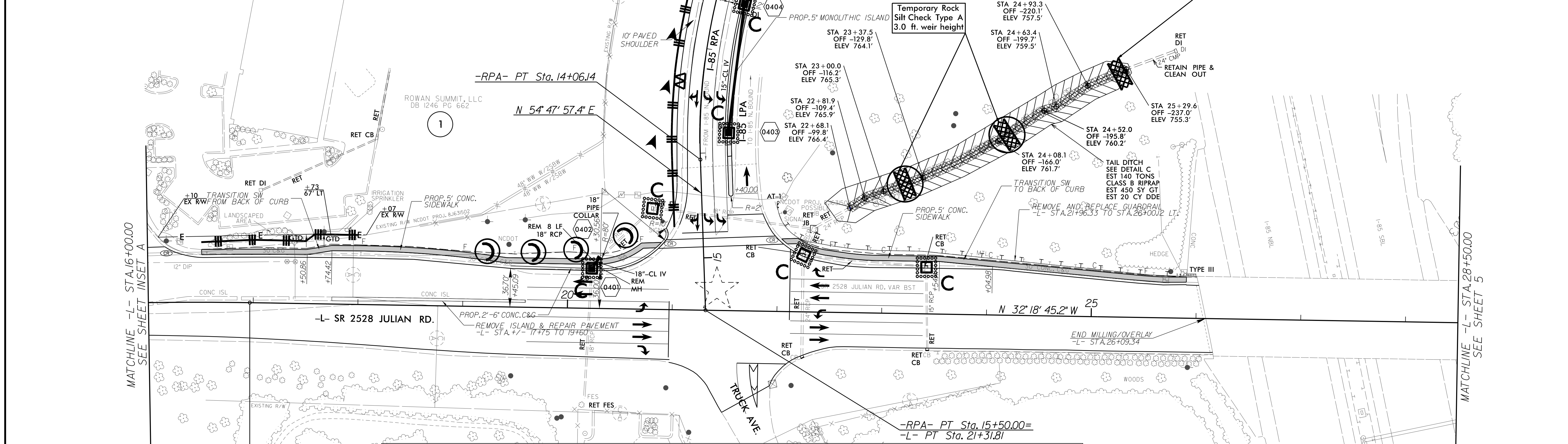
RELEASE FOR CONSTRUCTION DATE: _____



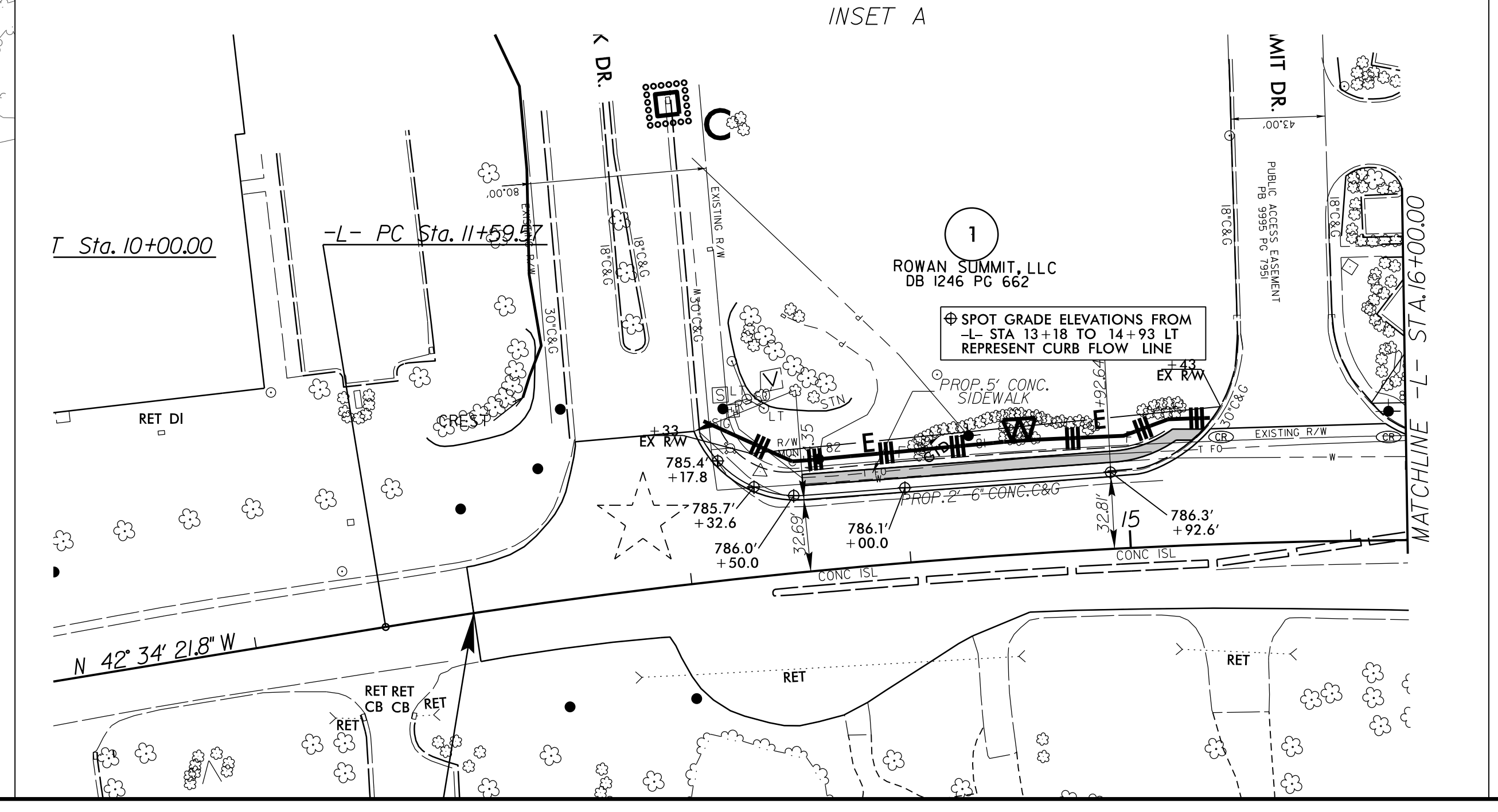
-L-	-RPA-
PI Sta 14+28.90	PI Sta 12+71.38
$\Delta = 10^\circ 15' 36.6''$ (RT)	$\Delta = 27^\circ 23' 25.1''$ (LT)
$D = 154' 35.5''$	$D = 9' 57' 52.1''$
$L = 537.22'$	$L = 274.88'$
$T = 269.33'$	$T = 140.12'$
$R = 3,000.00'$	$R = 575.00'$
SE = SEE PLANS	SE = SEE PLANS

NOTE: PIPES LABELED TO BE REMOVED MAY BE FILLED W/ FLOWABLE FILL AND ABANDONED AT THE NCDOT FIELD ENGINEER'S DISCRETION.

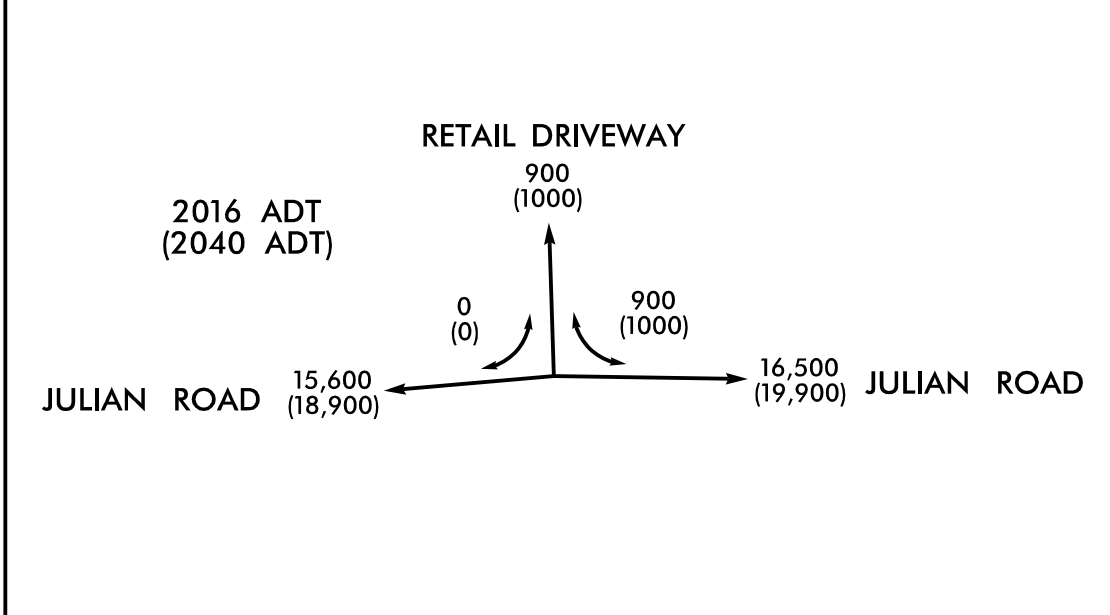
NOTE: IN SYSTEMS TO BE PLUGGED AND FILLED W/ FLOWABLE FILL, REMOVE STRUCTURES. ALTERNATELY, REMOVE TOPS OF STRUCTURES TO ELEV. OF BOTTOM OF AGGREGATE ROADWAY BASE, AND FILL W/ COMPACTED ABC OR FLOWABLE FILL AT NCDOT FIELD ENGINEER'S DISCRETION.



EXISTING TRAFFIC SIGNAL



STA 22+68.1 TO STA 25+29.6 LT -L- INSTALL PERMANENT DITCH LINING PER DETAIL C AS WORK ALLOWS AND INSTALL MATTING FOR EROSION CONTROL ON ANY DISTURBED AREAS PRIOR TO CONCLUSION OF DAILY CONSTRUCTION ACTIVITIES.



SEE SHEET 10 FOR -L- PROFILE
 SEE SHEET 2D-1 FOR DRAINAGE DITCH DETAILS

REVISIONS

8/17/19
 1/2/2021
 U5738/201717026220 U5738/Roadside/CADD/PSHU/738_Rdy_EC_10.dgn
 1/2/2021