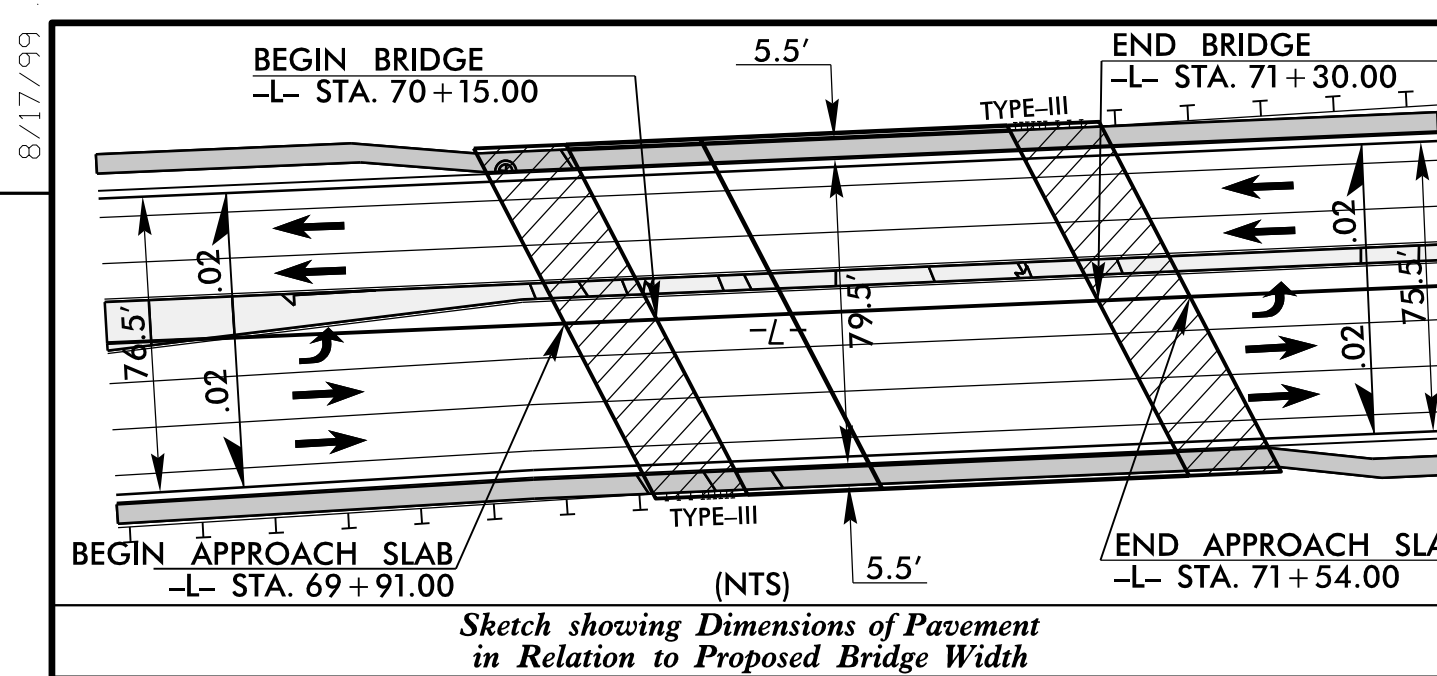
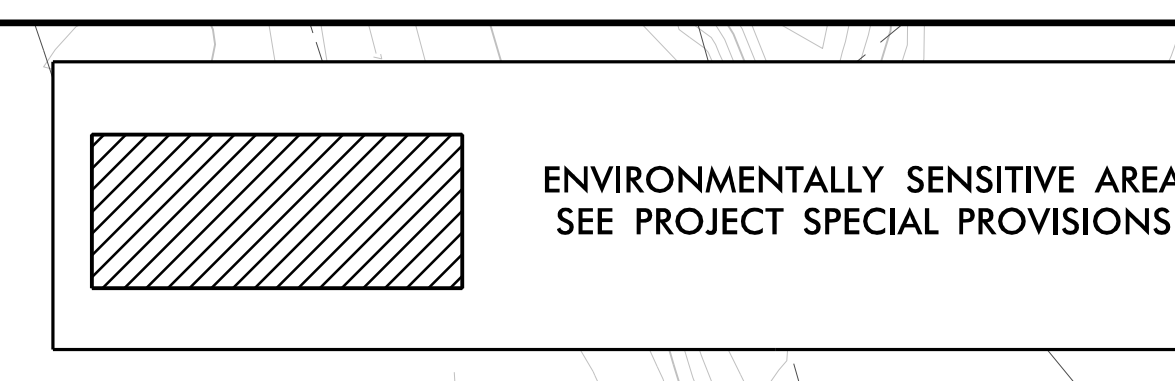


8/17/99
1/2/2021
U5738/17102620
U5738/Roadside/CADD/PSH/JH/738_Rdy_EC_08.dgn



-Y5-	-Y6-	-Y8-
+88.28 44' 5.32" (LT) Δ = 4' 11" 10.4" (LT) D = 1' 27" 21.7" L = 287.51' T = 143.82' R = 3,935.07'	PI Sta 11+43.82 Δ = 8' 43' 35.1" (LT) D = 9' 20' 01.6" L = 93.49' T = 46.84' R = 613.85'	PI Sta 11+79.45 Δ = 85' 43' 30.8" (RT) D = 8' 51' 04.0" L = 104.73' T = 64.96' R = 70.00'

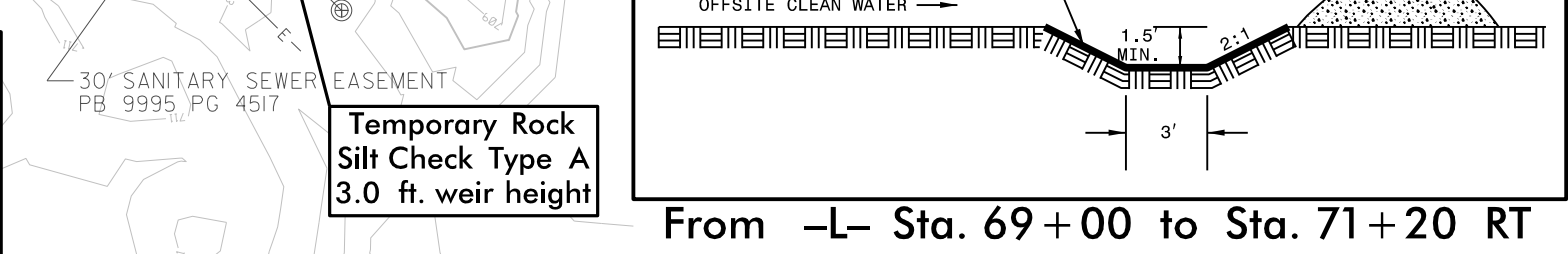
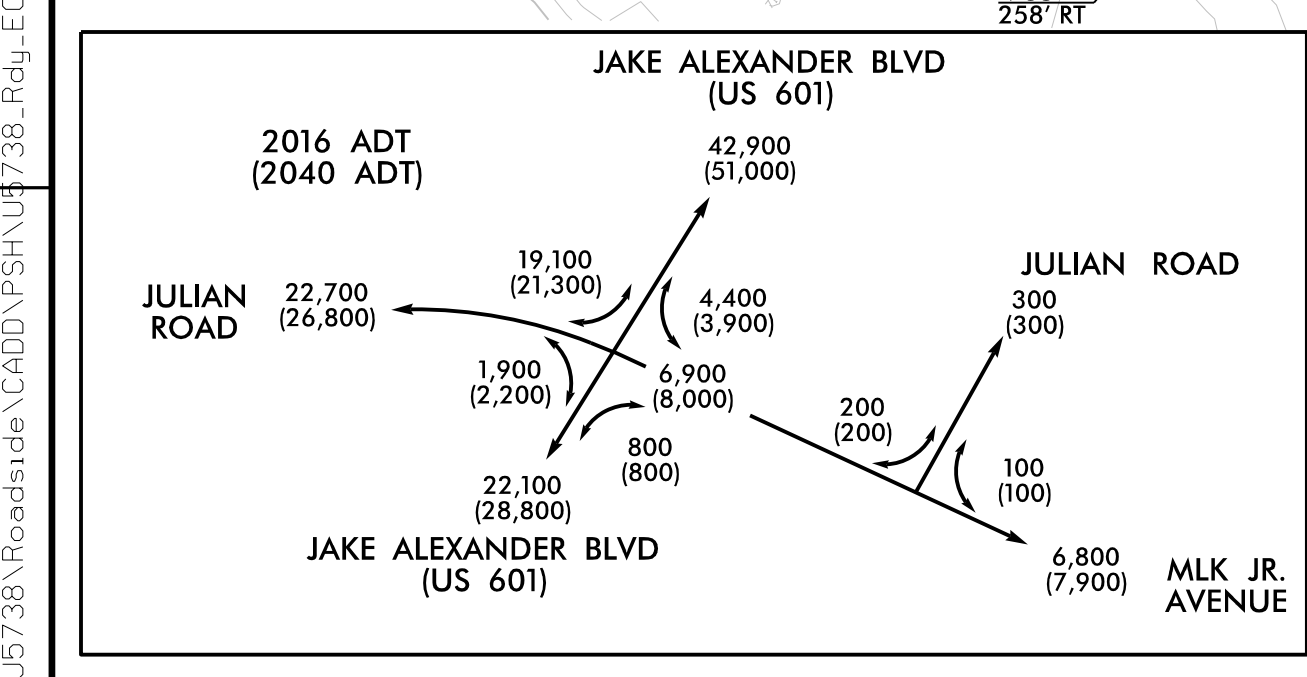
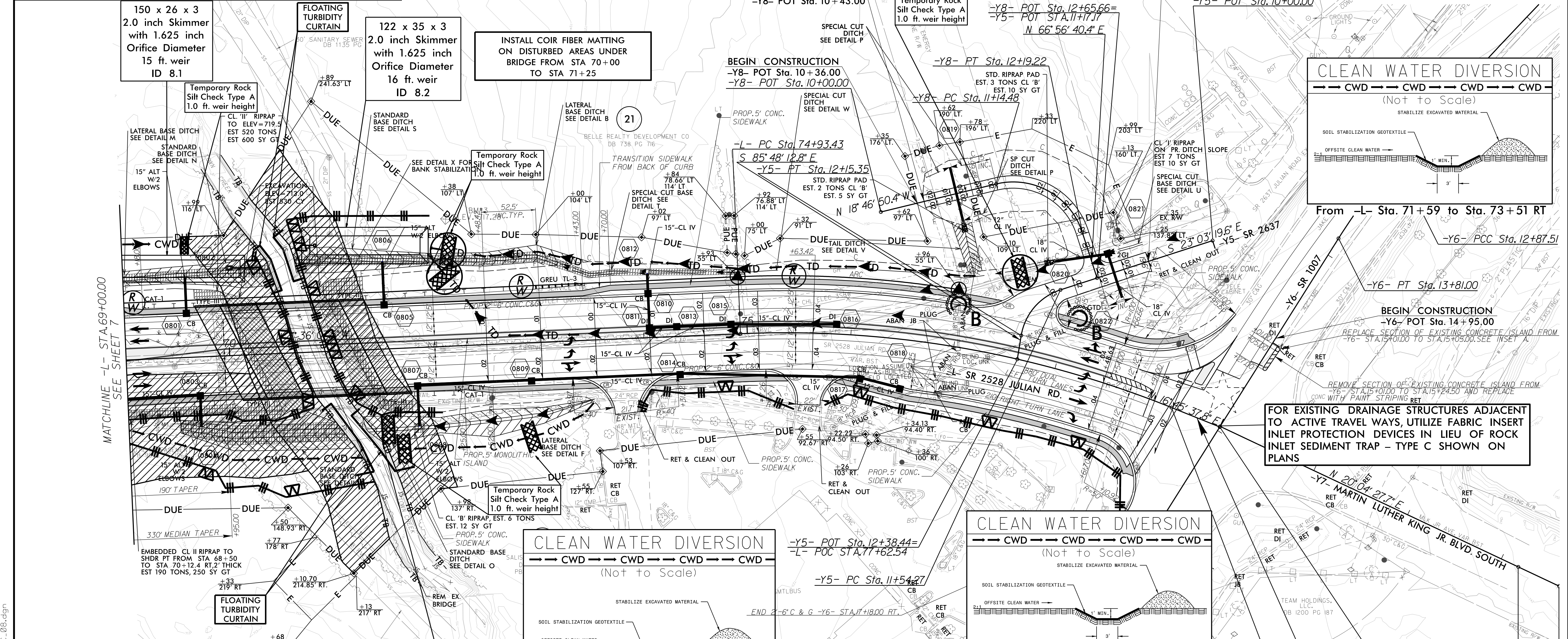


SEPI
Engineering & Construction, Inc.

1 Glenwood Avenue
Raleigh, NC 27603
Tel: 919.789.9977
Fax: 919.789.9591
License: C-2197

PROJECT REFERENCE NO. U-5738	SHEET NO. EC-8/CONST-8
RW SHEET NO. 8	

RELEASE FOR CONSTRUCTION DATE: _____



Excavate and Build Proposed Ditch according to Detail F on Roadway Plans from Sta. 71+50 to Sta. 73+50 RT Stabilize with Matting during C&G

Excavate and Build Proposed Ditch according to Detail T on Roadway Plans from Sta. 73+00 to Sta. 75+00 LT Stabilize with Matting during C&G

Excavate and Build Proposed Ditch according to Detail K on Roadway Plans from Sta. 69+50 to Sta. 71+15 RT Mat All Exposed Cut Slopes with Temporary Matting as Work Allows during C&G

Excavate and Build Proposed Ditch according to Detail B on Roadway Plans from Sta. 71+50 to Sta. 73+00 LT Stabilize with Matting during C&G.

Excavate and Build Proposed Ditch according to Detail P on Roadway Plans from Sta. 75+00 to Sta. 77+14.7 LT Stabilize with Matting during C&G

Excavate and Build Proposed Ditch according to Detail O on Roadway Plans from Sta. 71+32 to Sta. 71+50 RT Stabilize with Matting during C&G



Excavate and Build Proposed Ditch according to Detail N on Roadway Plans from Sta. 70+00 to Sta. 70+45 LT Mat All Exposed Cut Slopes with Temporary Matting as Work Allows during C&G

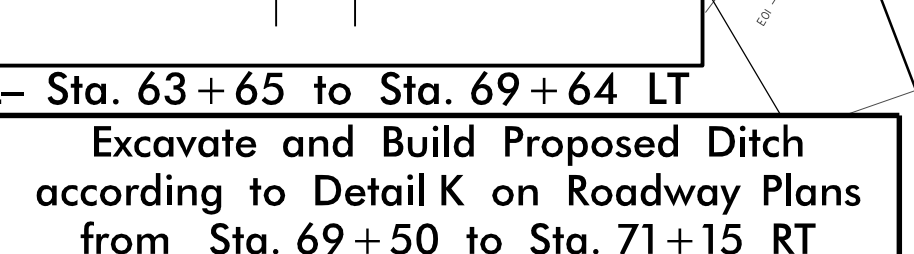
Excavate and Build Proposed Ditch according to Detail S on Roadway Plans from Sta. 70+45 to Sta. 71+50 LT Stabilize with Matting during C&G

Excavate and Build Proposed Ditch according to Detail J on Roadway Plans from Sta. 71+50 to Sta. 73+15 RT Mat All Exposed Cut Slopes with Temporary Matting as Work Allows during C&G

Excavate and Build Proposed Ditch according to Detail M on Roadway Plans from Sta. 73+00 to Sta. 75+00 LT Stabilize with Matting during C&G.

Excavate and Build Proposed Ditch according to Detail G on Roadway Plans from Sta. 75+00 to Sta. 77+14.7 LT Stabilize with Matting during C&G

Excavate and Build Proposed Ditch according to Detail Q on Roadway Plans from Sta. 71+50 to Sta. 71+50 RT Stabilize with Matting during C&G



Excavate and Build Proposed Ditch according to Detail H on Roadway Plans from Sta. 71+59 to Sta. 73+51 RT Mat All Exposed Cut Slopes with Temporary Matting as Work Allows during C&G

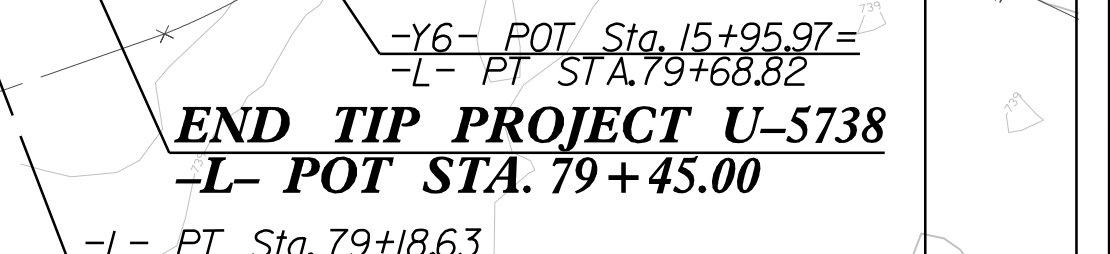
Excavate and Build Proposed Ditch according to Detail R on Roadway Plans from Sta. 73+00 to Sta. 75+00 LT Stabilize with Matting during C&G.

Excavate and Build Proposed Ditch according to Detail I on Roadway Plans from Sta. 73+00 to Sta. 75+00 LT Stabilize with Matting during C&G

Excavate and Build Proposed Ditch according to Detail L on Roadway Plans from Sta. 75+00 to Sta. 77+14.7 LT Stabilize with Matting during C&G

Excavate and Build Proposed Ditch according to Detail E on Roadway Plans from Sta. 75+00 to Sta. 77+14.7 LT Stabilize with Matting during C&G

Excavate and Build Proposed Ditch according to Detail V on Roadway Plans from Sta. 71+50 to Sta. 71+50 RT Stabilize with Matting during C&G



Excavate and Build Proposed Ditch according to Detail G on Roadway Plans from Sta. 75+00 to Sta. 77+14.7 LT Stabilize with Matting during C&G

Excavate and Build Proposed Ditch according to Detail Q on Roadway Plans from Sta. 71+50 to Sta. 71+50 RT Stabilize with Matting during C&G

Excavate and Build Proposed Ditch according to Detail I on Roadway Plans from Sta. 73+00 to Sta. 75+00 LT Stabilize with Matting during C&G

Excavate and Build Proposed Ditch according to Detail L on Roadway Plans from Sta. 75+00 to Sta. 77+14.7 LT Stabilize with Matting during C&G

Excavate and Build Proposed Ditch according to Detail E on Roadway Plans from Sta. 75+00 to Sta. 77+14.7 LT Stabilize with Matting during C&G

Excavate and Build Proposed Ditch according to Detail V on Roadway Plans from Sta. 71+50 to Sta. 71+50 RT Stabilize with Matting during C&G

EXISTING TRAFFIC SIGNAL

SEE SHEET 12 FOR -L- PROFILE
SEE SHEET 14 FOR -Y5- PROFILE
SEE SHEET 14 FOR -Y8- PROFILE
SEE SHEET 2D-1 FOR DRAINAGE DITCH DETAILS
SEE SHEETS S-1 THRU S-?? FOR STRUCTURE PLANS