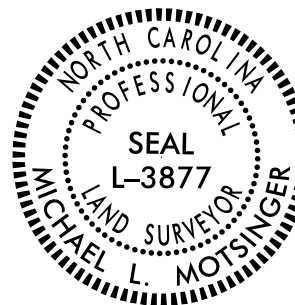


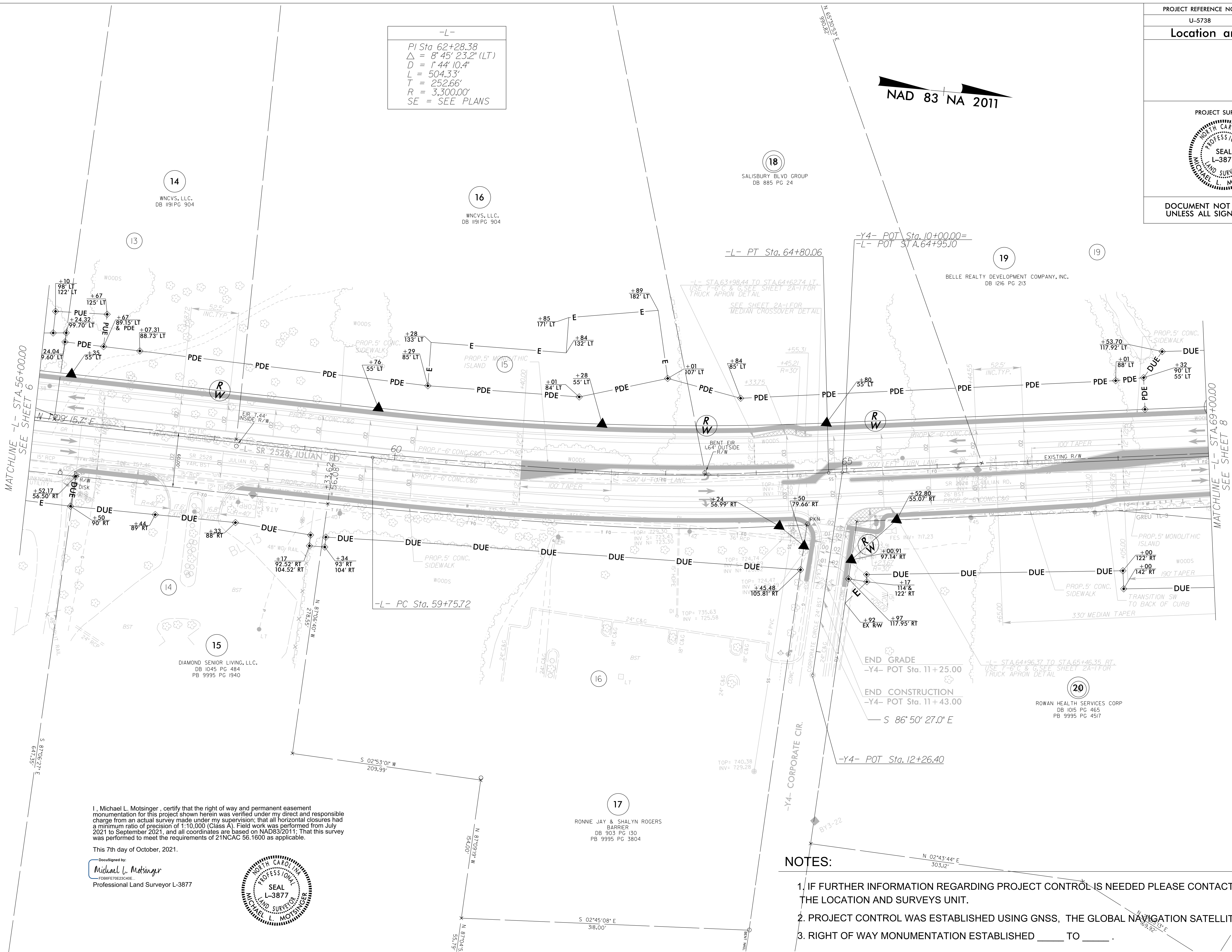
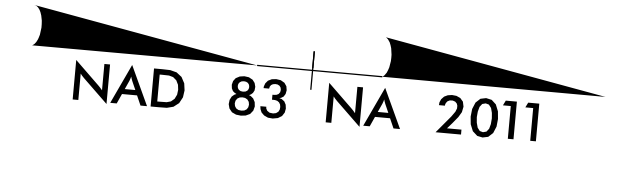
Location and Surveys

PROJECT SURVEYOR



DOCUMENT NOT CONSIDERED FINAL
UNLESS ALL SIGNATURES COMPLETED

-L-
PI Sta 62+28.38
Δ = 8°45'23.2" (LT)
D = 1'44'10.4"
L = 504.33'
T = 252.66'
R = 3,300.00'
SE = SEE PLANS



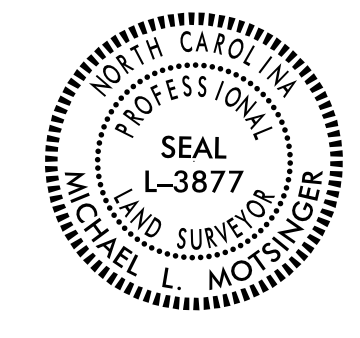
REVISIONS

6/2/19

Computer: U:\ban\U5738\2021-07-20\Julie\surface control sheets\tobechecked\U5738_1s_rw07.dgn
 Michael L. Motsinger
 F:\P\14\30\U5738\2021-07-20\Julie\surface control sheets\tobechecked\U5738_1s_rw07.dgn
 Michael L. Motsinger

I, Michael L. Motsinger, certify that the right of way and permanent easement monumentation for this project shown herein was verified under my direct and responsible charge from an actual survey made under my supervision; that all horizontal closures had a minimum ratio of precision of 1:10,000 (Class A). Field work was performed from July 2021 to September 2021, and all coordinates are based on NAD83/2011; That this survey was performed to meet the requirements of 21NCAC 56.1600 as applicable.

This 7th day of October, 2021.
 Documented by:
 Michael L. Motsinger
 FDBBF7023C40E
 Professional Land Surveyor L-3877



- NOTES:
1. IF FURTHER INFORMATION REGARDING PROJECT CONTROL IS NEEDED PLEASE CONTACT THE LOCATION AND SURVEYS UNIT.
 2. PROJECT CONTROL WAS ESTABLISHED USING GNSS, THE GLOBAL NAVIGATION SATELLITE SYSTEM.
 3. RIGHT OF WAY MONUMENTATION ESTABLISHED ____ TO ____.

14
WNCVS, LLC.
DB 1191 PG 904

16
WNCVS, LLC.
DB 1191 PG 904

18
SALISBURY BLVD GROUP
DB 885 PG 24

19
BELLE REALTY DEVELOPMENT COMPANY, INC.
DB 1216 PG 213

15
DIAMOND SENIOR LIVING, LLC.
DB 1045 PG 484
PB 9995 PG 1940

17
RONNIE JAY & SHALYN ROGERS
BARRIER
DB 903 PG 130
PB 9995 PG 3804

20
ROWAN HEALTH SERVICES CORP
DB 1015 PG 465
PB 9995 PG 4517