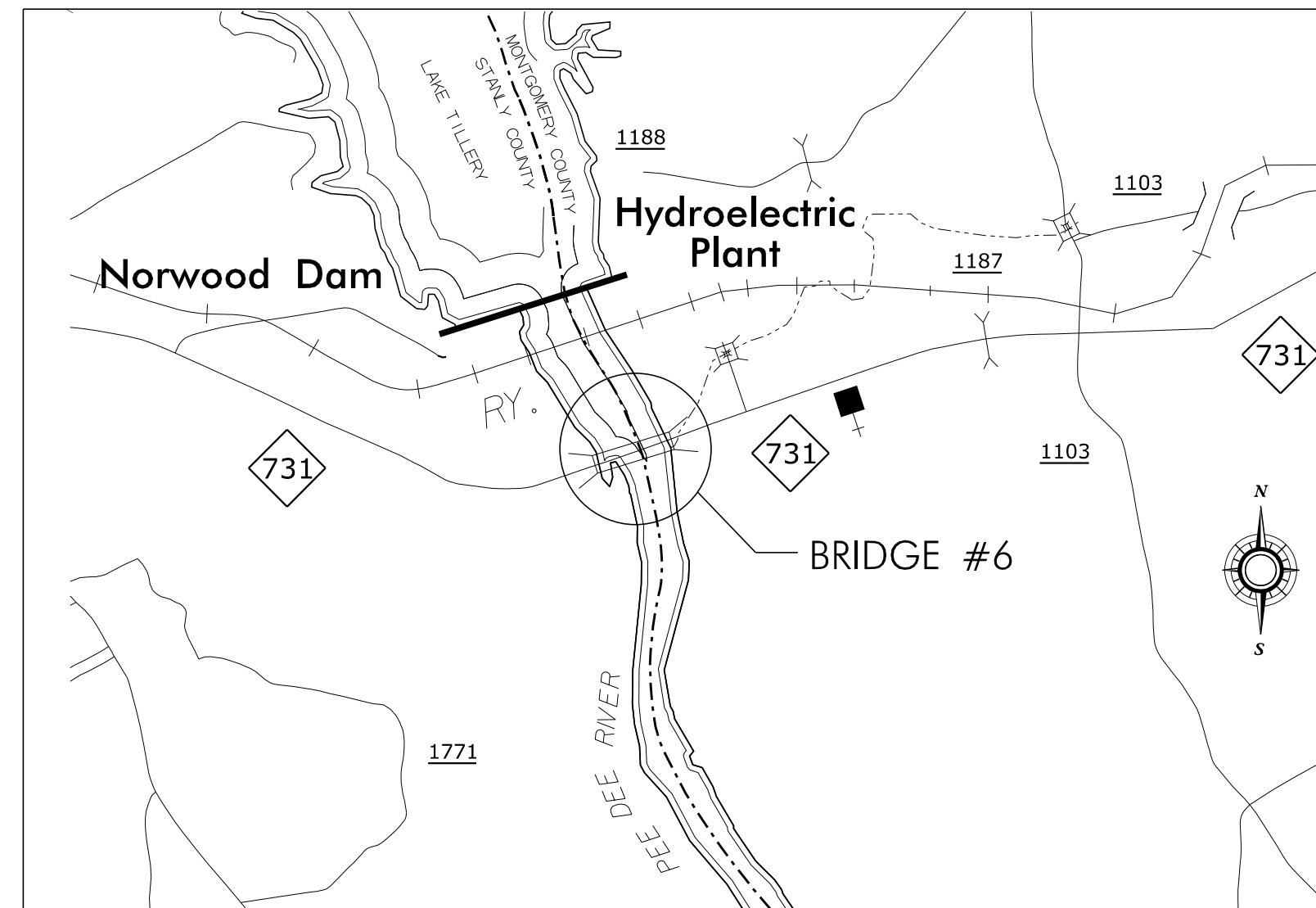
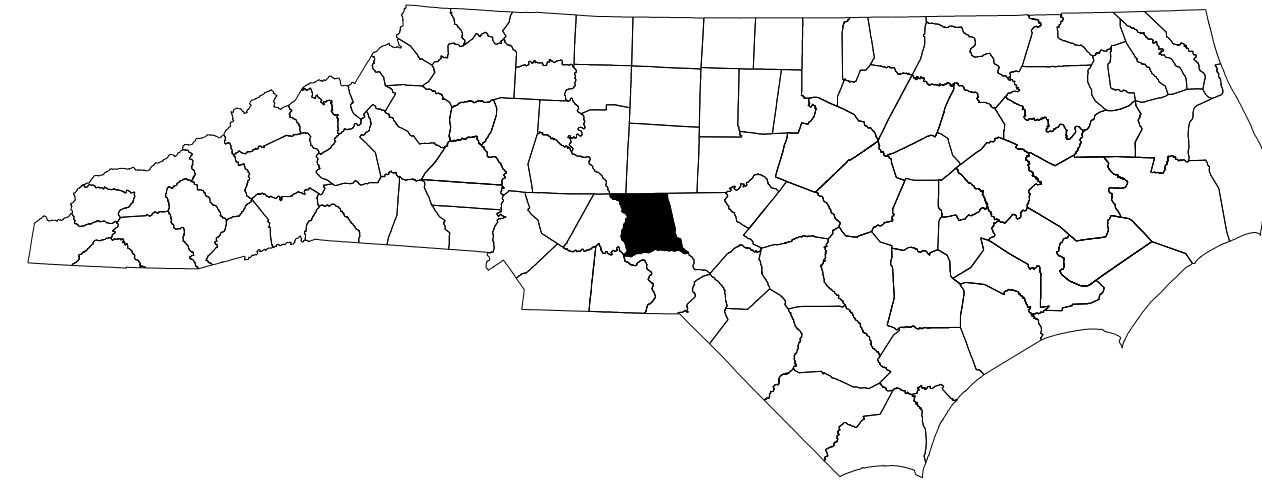


STATE OF NORTH CAROLINA
DIVISION OF HIGHWAYS

TRANSPORTATION MANAGEMENT PLAN

MONTGOMERY COUNTY



VICINITY MAP - MONTGOMERY & STANLY CO.

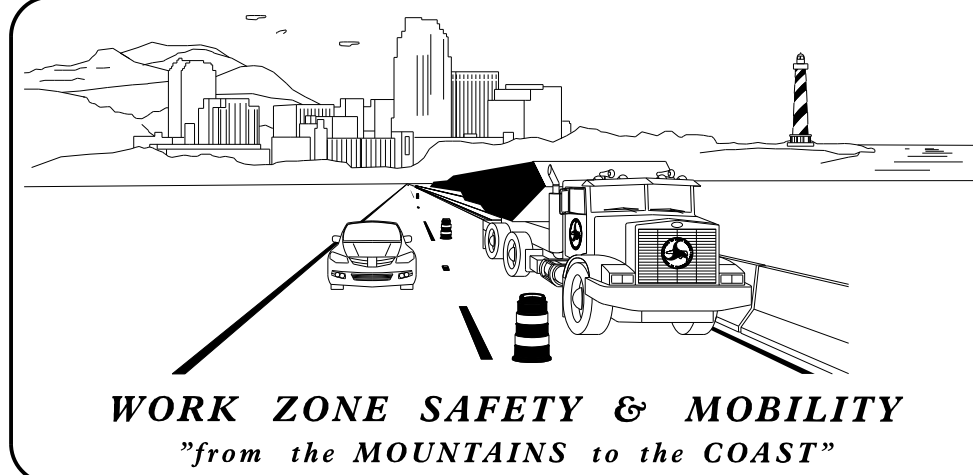
INDEX OF SHEETS

SHEET NO.	TITLE
TMP-1	TITLE SHEET, VICINITY MAP, AND INDEX OF SHEETS
TMP-1A	LIST OF APPLICABLE ROADWAY STANDARD DRAWINGS, AND LEGEND
TMP-1B	TRANSPORTATION OPERATIONS PLAN; (MANAGEMENT STRATEGIES, GENERAL NOTES, AND LOCAL NOTES)
TMP-1C	RSD 1101.02D PORTABLE TEMPORARY SIGNALS
TMP-2	TRANSPORTATION OPERATIONS PLAN: (MANAGEMENT STRATEGIES, GENERAL NOTES, AND LOCAL NOTES)
TMP-3	BRIDGE NO. 6 TEMPORARY TRAFFIC CONTROL DETAIL / PHASING

SHEET NO.

TMP-1

2/4/2019 N:\Special\15BPR21\TrafficControl\CP\15BPR_21\TC_TMP_01.dgn User:mgarratt



PLANS PREPARED BY:
S. B. COATS

NCDOT CONTACTS:
D. A. PARKER, P.E.
PROJECT ENGINEER
R. M. GARRETT
PROJECT DESIGN ENGINEER



DOCUMENT NOT CONSIDERED FINAL UNLESS ALL SIGNATURES COMPLETED

APPROVED: *Don A. Parker*
DATE: 2/4/2019

SEAL
NORTH CAROLINA PROFESSIONAL SEAL 043251 ENGINEER DON A. PARKER

TIP PROJECT: 15BPR.21

ROADWAY STANDARD DRAWINGS

THE FOLLOWING ROADWAY STANDARDS AS SHOWN IN "ROADWAY STANDARD DRAWINGS" - N.C. DEPARTMENT OF TRANSPORTATION - RALEIGH, N.C., DATED JANUARY 2018 ARE APPLICABLE TO THIS PROJECT AND BY REFERENCE HEREBY ARE CONSIDERED A PART OF THESE PLANS:

STD. NO.	TITLE
1101.02	TEMPORARY LANE CLOSURES
1101.11	TRAFFIC CONTROL DESIGN TABLES
1110.01	STATIONARY WORK ZONE SIGNS
1110.02	PORTABLE WORK ZONE SIGNS
1115.01	FLASHING ARROW BOARDS
1130.01	DRUMS
1135.01	CONES
1150.01	FLAGGING DEVICES
1165.01	TRUCK MOUNTED ATTENUATOR
1180.01	SKINNY - DRUMS
1205.01	PAVEMENT MARKINGS - LINE TYPES AND OFFSETS
1205.02	PAVEMENT MARKINGS - TWO LANE AND MULTILANE ROADWAYS
1205.12	PAVEMENT MARKINGS - BRIDGES
1250.01	RAISED PAVEMENT MARKERS - INSTALLATION SPACING
1251.01	RAISED PAVEMENT MARKERS - (PERMANENT AND TEMPORARY)

LEGEND

GENERAL

- DIRECTION OF TRAFFIC FLOW
- DIRECTION OF PEDESTRIAN TRAFFIC FLOW
- EXIST. PVMT.
- NORTH ARROW
- PROPOSED PVMT.
- TEMP. SHORING (LOCATION PURPOSES ONLY)

WORK AREA

REMOVAL

USER DEFINED (IF NEEDED)

USER DEFINED (IF NEEDED)

SIGNALS

- EXISTING
- PROPOSED
- TEMPORARY

PAVEMENT MARKINGS

- EXISTING LINES
- TEMPORARY LINES

TRAFFIC CONTROL DEVICES

- BARRICADE (TYPE III)
- CONE
- DRUM
- SKINNY DRUM
- TUBULAR MARKER
- TEMPORARY CRASH CUSHION
- FLASHING ARROW BOARD
- FLAGGER
- LAW ENFORCEMENT
- TRUCK MOUNTED ATTENUATOR (TMA)
- CHANGEABLE MESSAGE SIGN

TEMPORARY SIGNING

- PORTABLE SIGN
- STATIONARY SIGN
- STATIONARY OR PORTABLE SIGN

PAVEMENT MARKERS

- CRYSTAL/CRYSTAL
- CRYSTAL/RED
- YELLOW/YELLOW

PAVEMENT MARKING SYMBOLS

- PAVEMENT MARKING SYMBOLS

TEMPORARY PAVEMENT MARKING

- WHITE STOPBAR COLD APPLIED PLASTIC (24") Type IV - Removable Tape
- COLD APPLIED PLASTIC (4") Type IV - Removable Tape

2/1/2019 N:\Special\15BPR21\TrafficControl\TCP\15BPR.21\TC_TMP_1A.dgn User:mgarr ett

APPROVED: <i>Don A. Parker</i> DATE: 2/1/2019			ROADWAY STANDARD DRAWINGS & LEGEND
DOCUMENT NOT CONSIDERED FINAL UNLESS ALL SIGNATURES COMPLETED			

MANAGEMENT STRATEGIES

RECOMMENDED STRATEGIES:

BRIDGE NO. 6

ONE-LANE, TWO WAY OPERATION (SIGNALIZED)

GENERAL NOTES / LOCAL NOTES

CHANGES MAY BE REQUIRED WHEN PHYSICAL DIMENSIONS IN THE DETAIL DRAWINGS, STANDARD DETAILS, AND ROADWAY DETAILS ARE NOT ATTAINABLE TO MEET FIELD CONDITIONS OR RESULT IN DUPLICATE OR UNDESIRE OVERLAPPING OF DEVICES. MODIFICATION MAY INCLUDE: MOVING, SUPPLEMENTING, COVERING, OR REMOVAL OF DEVICES AS DIRECTED BY THE ENGINEER.

THE FOLLOWING GENERAL NOTES APPLY AT ALL TIMES FOR THE DURATION OF THE CONSTRUCTION PROJECT EXCEPT WHEN OTHERWISE NOTED IN THE PLAN OR DIRECTED BY THE ENGINEER.

LANE AND SHOULDER CLOSURE REQUIREMENTS

- A) REMOVE LANE CLOSURE DEVICES FROM THE LANE WHEN WORK IS NOT BEING PERFORMED BEHIND THE LANE CLOSURE OR WHEN A LANE CLOSURE IS NO LONGER NEEDED OR AS DIRECTED BY THE ENGINEER.
- B) WHEN PERSONNEL AND/OR EQUIPMENT ARE WORKING WITHIN A LANE OF TRAVEL OF AN UNDIVIDED OR DIVIDED FACILITY, CLOSE THE LANE ACCORDING TO THE TRAFFIC CONTROL PLANS, ROADWAY STANDARD DRAWINGS, OR AS DIRECTED BY THE ENGINEER. CONDUCT THE WORK SO THAT ALL PERSONNEL AND/OR EQUIPMENT REMAIN WITHIN THE CLOSED TRAVEL LANE.
- C) DO NOT INSTALL MORE THAN ONE LANE CLOSURE IN ANY ONE DIRECTION ON ALL ROADS.

PAVEMENT EDGE DROP OFF REQUIREMENTS

- D) DO NOT EXCEED A DIFFERENCE OF 2 INCHES IN ELEVATION BETWEEN OPEN LANES OF TRAFFIC FOR NOMINAL LIFTS OF 1.5 INCHES. INSTALL ADVANCE WARNING "UNEVEN LANES" SIGNS (W8-11) 500 FT IN ADVANCE AND A MINIMUM OF EVERY HALF MILE THROUGHOUT THE UNEVEN AREA.

TRAFFIC PATTERN ALTERATIONS

- E) NOTIFY THE ENGINEER THIRTY (30) CALENDAR DAYS PRIOR TO ANY TRAFFIC PATTERN ALTERATION.

SIGNING

- F) INSTALL ADVANCE WORK ZONE WARNING SIGNS WHEN WORK IS WITHIN 40 FT FROM THE EDGE OF TRAVEL LANE AND NO MORE THAN THREE (3) DAYS PRIOR TO THE BEGINNING OF CONSTRUCTION.
- G) ENSURE ALL NECESSARY SIGNING IS IN PLACE PRIOR TO ALTERING ANY TRAFFIC PATTERN.

GENERAL NOTES / LOCAL NOTES (CONT'D)

TRAFFIC CONTROL DEVICES

- H) WHEN LANE CLOSURES ARE NOT IN EFFECT SPACE CHANNELIZING DEVICES IN WORK AREAS NO GREATER IN FEET THAN TWICE THE POSTED SPEED LIMIT (MPH) EXCEPT, 10 FT ON-CENTER IN RADII, AND 3 FT OFF THE EDGE OF AN OPEN TRAVELWAY. REFER TO STANDARD SPECIFICATIONS FOR ROADS AND STRUCTURES SECTIONS 1130 (DRUMS), 1135 (CONES) AND 1180 (SKINNY DRUMS) FOR ADDITIONAL REQUIREMENTS.
- I) PLACE ADDITIONAL SETS OF THREE CHANNELIZING DEVICES DRUMS PERPENDICULAR TO THE EDGE OF TRAVELWAY ON 500 FT CENTERS WHEN UNOPENED LANES ARE CLOSED TO TRAFFIC.

PAVEMENT MARKINGS AND MARKERS

- J) INSTALL TEMPORARY PAVEMENT MARKINGS AND TEMPORARY PAVEMENT MARKERS ON INTERIM LAYERS OF PAVEMENT AS FOLLOWS:

ROAD NAME	MARKING	MARKER
NC 731	COLD APPLIED PLASTIC TYPE IV	NONE

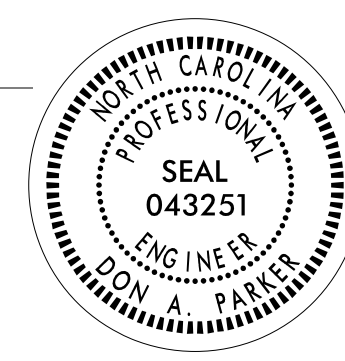
- K) TIE PROPOSED PAVEMENT MARKING LINES TO EXISTING PAVEMENT MARKING LINES.
- L) REMOVE/REPLACE ANY CONFLICTING/DAMAGED PAVEMENT MARKINGS AND MARKERS BY THE END OF EACH DAY'S OPERATION.

LOCAL NOTES

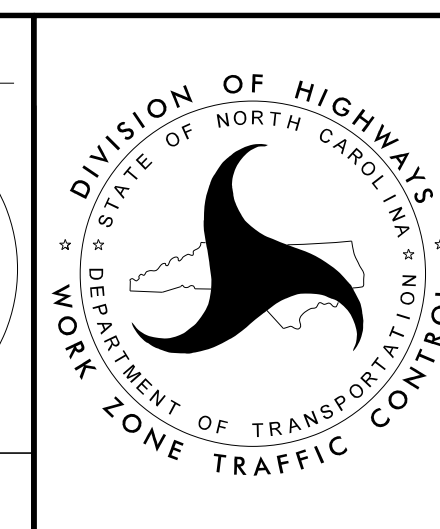
- 1) COORDINATE WITH THE OVERSIZE / OVERWEIGHT UNIT (888-221-8166 OR 919-814-3700) (30) CALENDAR DAYS PRIOR TO ALTERING THE TRAFFIC PATTERN ALONG BRIDGE NO. 6.

2/1/2019 N:\Special\15BPR21\Traffic\TrafficControl\TCP\15BPR.21.TC.TMP.lib.dgn User:rmgarr ett

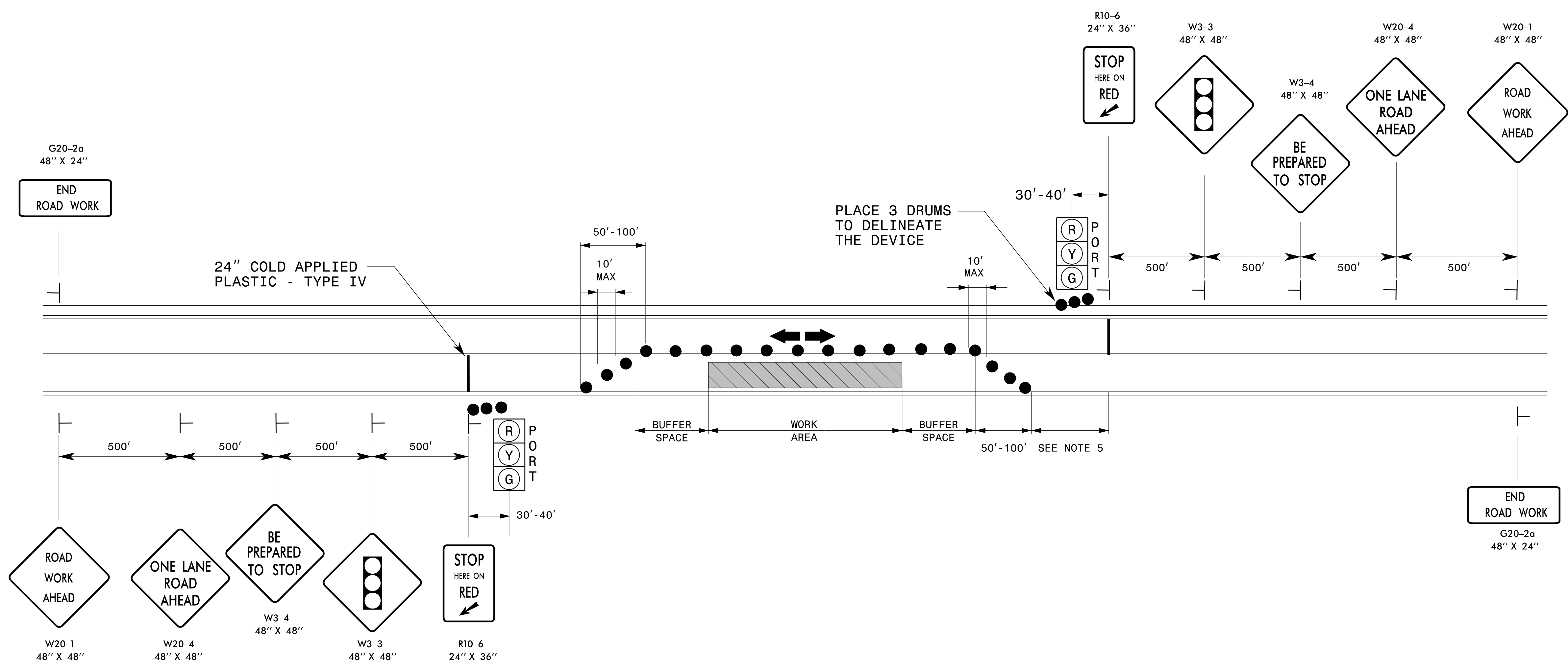
DocuSigned by:
 APPROVED: *Don A. Parker*
 DATE: 2/1/2019



**DOCUMENT NOT CONSIDERED FINAL
UNLESS ALL SIGNATURES COMPLETED**



**TRANSPORTATION
OPERATIONS
PLAN**



GENERAL NOTES

- 1- INSTALL LANE CLOSURES WITH THE TRAFFIC FLOW, BEGINNING WITH DEVICES ON THE UPSTREAM SIDE OF TRAFFIC.
- 2- REMOVE LANE CLOSURES AGAINST THE TRAFFIC FLOW, BEGINNING WITH DEVICES ON THE DOWNSTREAM SIDE OF TRAFFIC.
- 3- PLACE DRUMS THRU THE WORK AREA AT THE MAXIMUM SPACING EQUAL IN FEET TO 2 TIMES THE POSTED SPEED LIMIT.
- 4- EXTEND LANE CLOSURES AT THE BUFFER SPACE SUCH THAT STOPPING SIGHT DISTANCE IS PROVIDED TO THE SIGNAL (REFER TO RSD 1101.11, SHEET 2).
- 5- ALLOW ADEQUATE ROOM FOR ROAD USERS TO RETURN TO THEIR NORMAL DRIVING PATH.

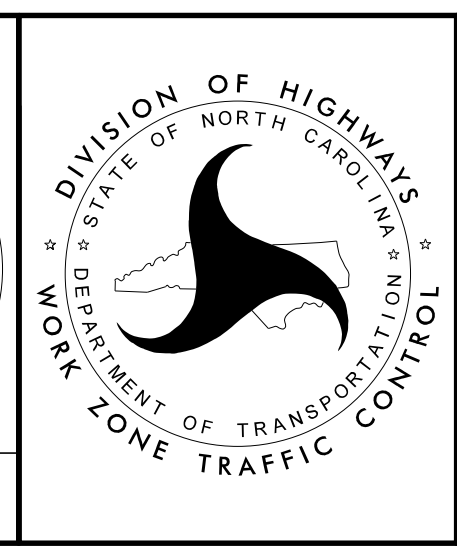
LEGEND

- STATIONARY SIGN
- ← DIRECTION OF TRAFFIC FLOW
- ⦿ PORTABLE SIGNAL
- DRUM

APPROVED: *Don A. Parker*
 DATE: 2/1/2019

Seal: NORTH CAROLINA PROFESSIONAL ENGINEER SEAL 043251 DON A. PARKER

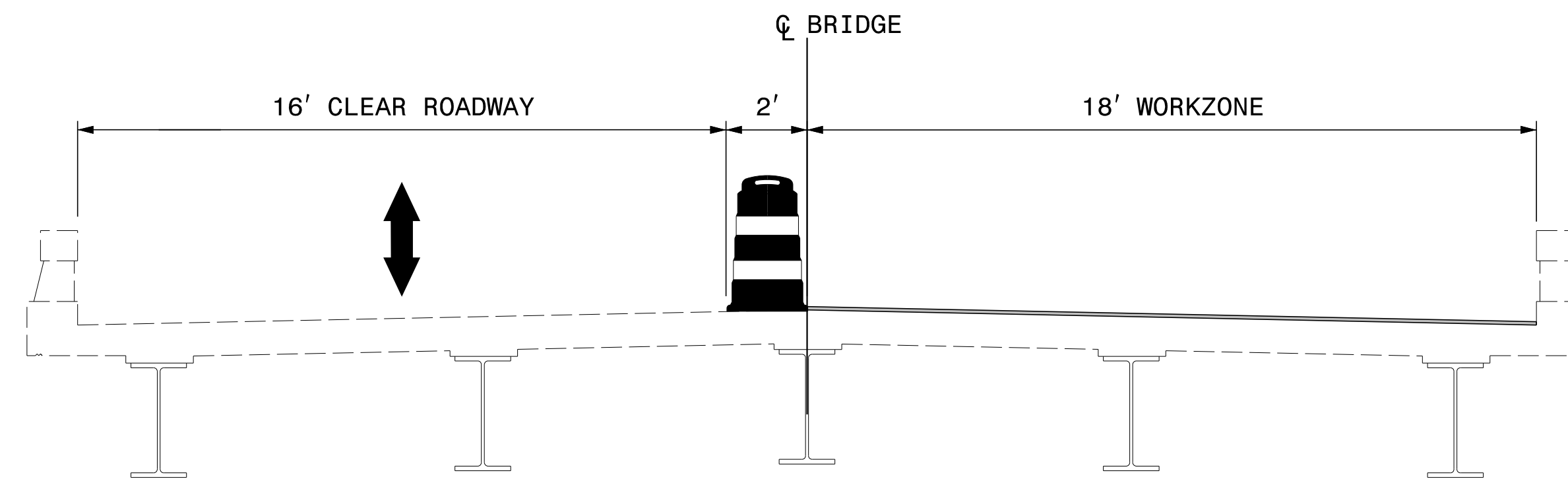
DOCUMENT NOT CONSIDERED FINAL UNLESS ALL SIGNATURES COMPLETED



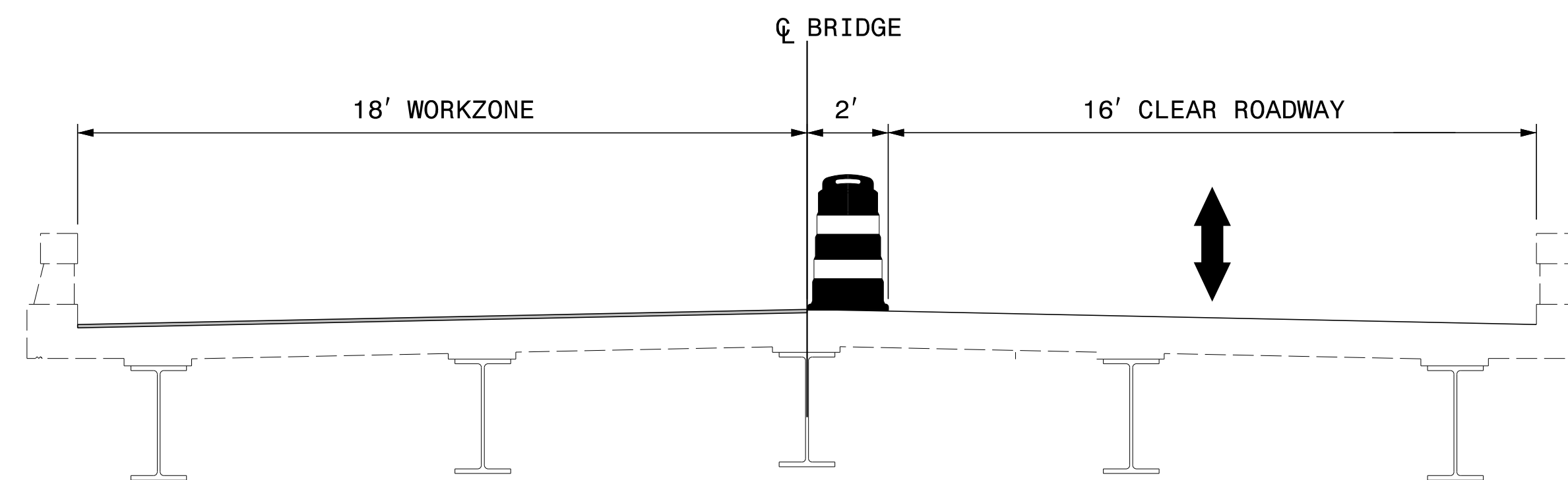
**PORTABLE
 TEMPORARY SIGNALS SYSTEM
 SETUP**

2/1/2019
 N:\Special\15BPR21\TrafficControl\15BPR.21.TC.TMP.1C.dgn
 User:rmgarr ett

PHASING



TYPICAL SECTION - STAGE I



TYPICAL SECTION - STAGE II

STAGE I

STEP 1 - USING ROADWAY STANDARD DRAWING (RSD) 1101.01, SHEET 1 OF 14, AND SHEET TMP-1C, PLACE ADVANCED WARNING SIGNS AND TRAFFIC CONTROL DEVICES NECESSARY FOR THE STAGE I TRAFFIC PATTERN DEPICTED HEREON AND PLACE TRAFFIC INTO SAME. (SEE LOCAL NOTE 1).

- PLACE CMS 1 MILE WEST OF THE STRUCTURE WITH THE FOLLOWING MESSAGES:

MESSAGE (1) TRAFFIC
SIGNAL
1 MI AHD

MESSAGE (2) BE
PREPARED
TO STOP

STEP 2 - COMPLETE STAGE I BRIDGE WORK.

STEP 3 - USING FLAGGERS ADJUST SIGNALS AND TAPERS FOR THE STAGE 2 PATTERN. (SEE SHEET TMP-1C)

STAGE II

STEP 1 - COMPLETE STAGE II BRIDGE WORK.

STEP 2 - USING ROADWAY STANDARD DRAWING (RSD) 1101.02, SHEET 1 OF 14, AND FLAGGERS REMOVE ALL STAGE II TRAFFIC CONTROL DEVICES AND RETURN TRAFFIC TO THE EXISTING TRAFFIC PATTERN.

STEP 3 - USING ROADWAY STANDARD DRAWING (RSD) 1101.02, SHEET 11 OF 14 INSTALL FINAL PAVEMENT MARKING / MARKERS.

STEP 3 - REMOVE ALL TRAFFIC DEVICES.

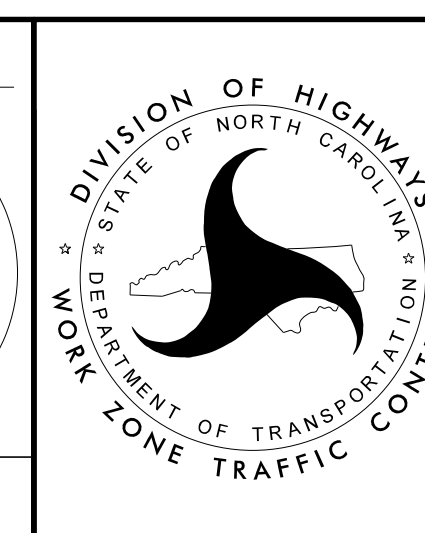
2/1/2019
N:\Special\15BPR21\TrafficControl\15BPR.21.TC.TMP.2.dgn
User:rmgarr ett

APPROVED: *Don A. Parker*
DATE: 2/1/2019

400482862618410...

SEAL
043251
ENGINEER
DON A. PARKER

**DOCUMENT NOT CONSIDERED FINAL
UNLESS ALL SIGNATURES COMPLETED**



MONTGOMERY COUNTY
BRIDGE NO. 6

TRAFFIC CONTROL
PHASING