

NOTES

FOAM JOINTS SHALL BE INSTALLED AS PER MANUFACTURER'S RECOMMENDATION.

THE FOAM JOINTS SHALL MEET THE MANUFACTURER'S RECOMMENDATION FOR THE SIZE OF OPENING ON THE PLANS, AND ACCOMMODATE THE MINIMUM EXPANSION SHOWN ON THE PLANS.

CONTRACTOR SHALL FIELD VERIFY THE EXISTING JOINT OPENING PRIOR TO ORDERING JOINT SEAL MATERIAL. IF ACTUAL JOINT OPENING VARIES FROM OPENING INDICATED IN DETAIL BY MORE THAN 1/4" NOTIFY ENGINEER. REVISION TO THE JOINT SEAL SIZE MIGHT BE NECESSARY.

THE INSTALLED FOAM JOINTS SHALL BE WATER TIGHT.

FOR FOAM JOINT SEALS FOR PRESERVATION, SEE SPECIAL PROVISIONS.

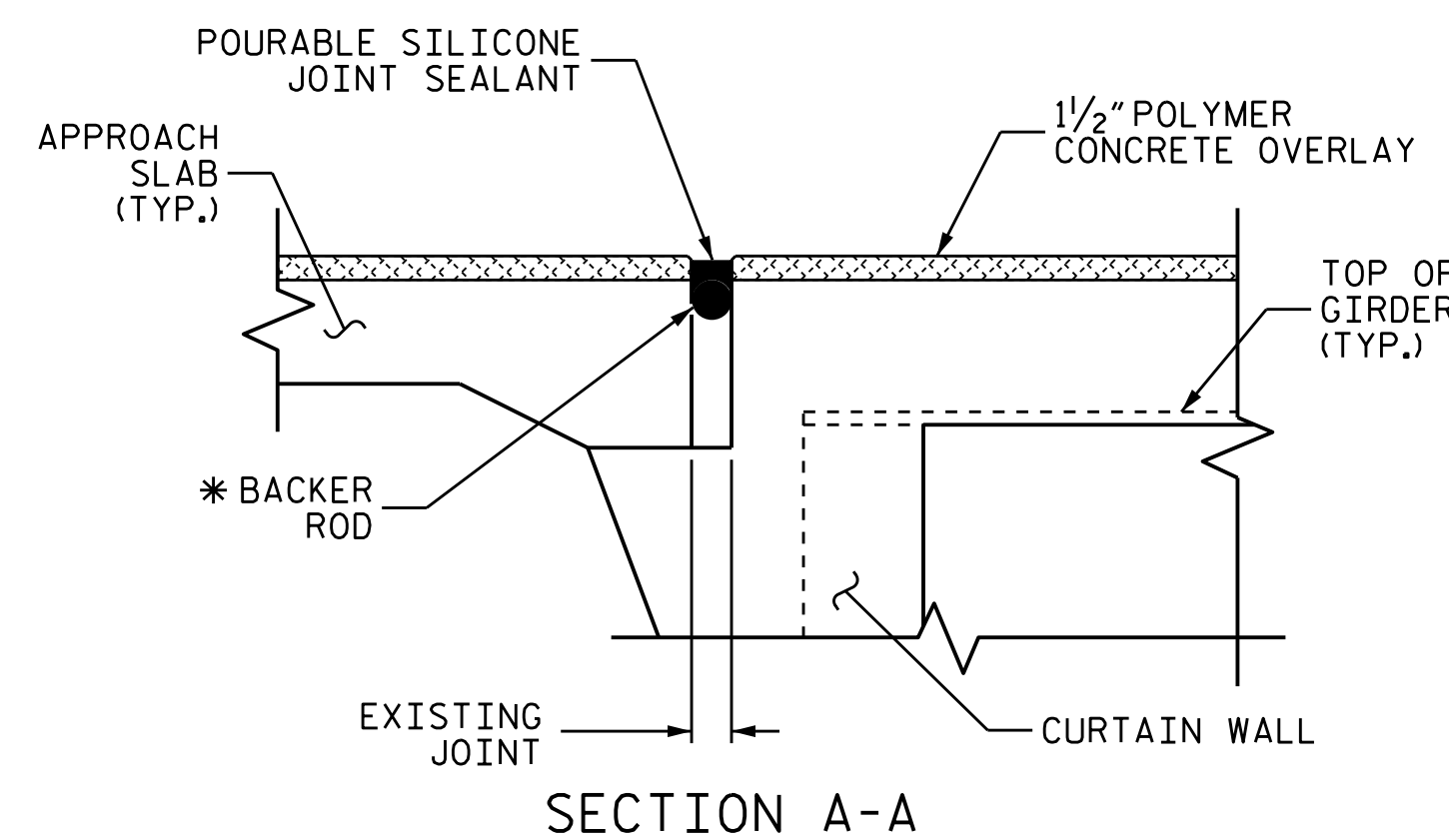
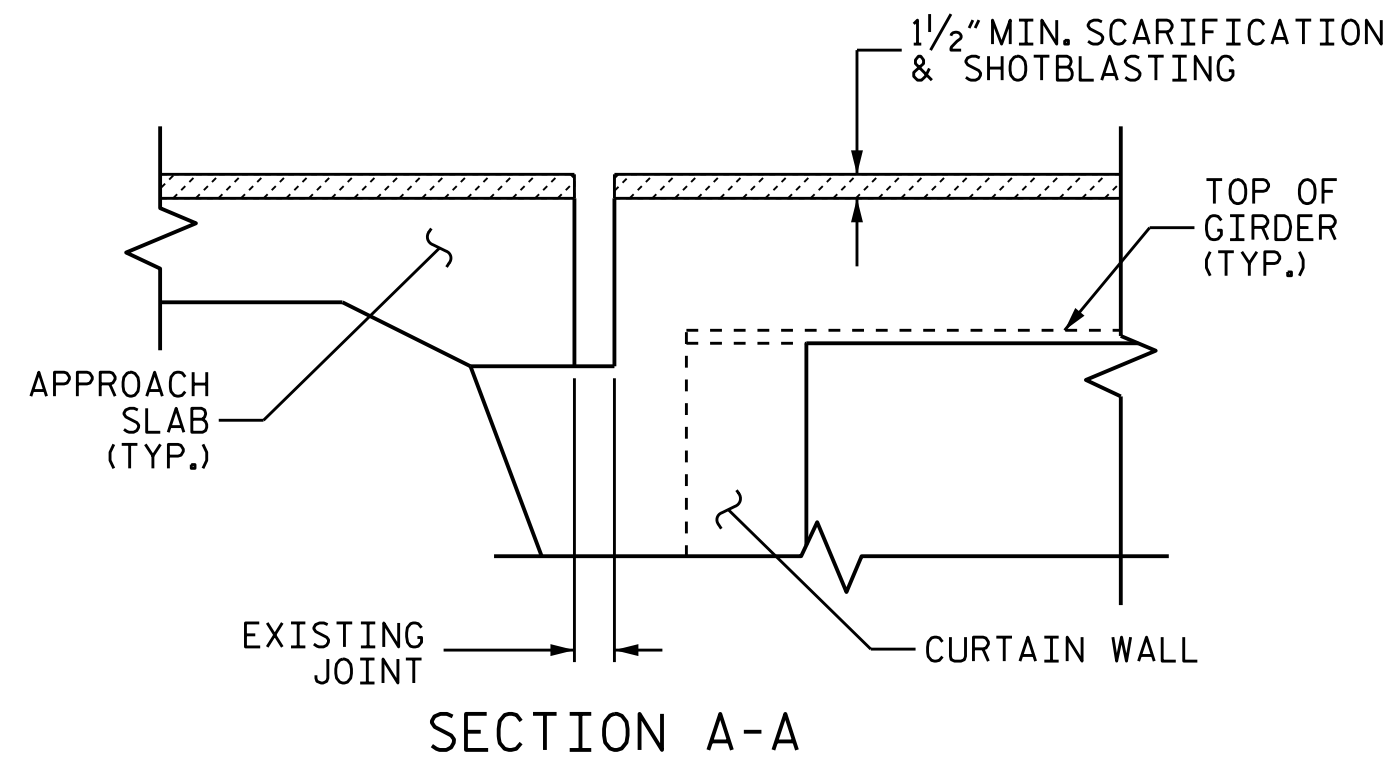
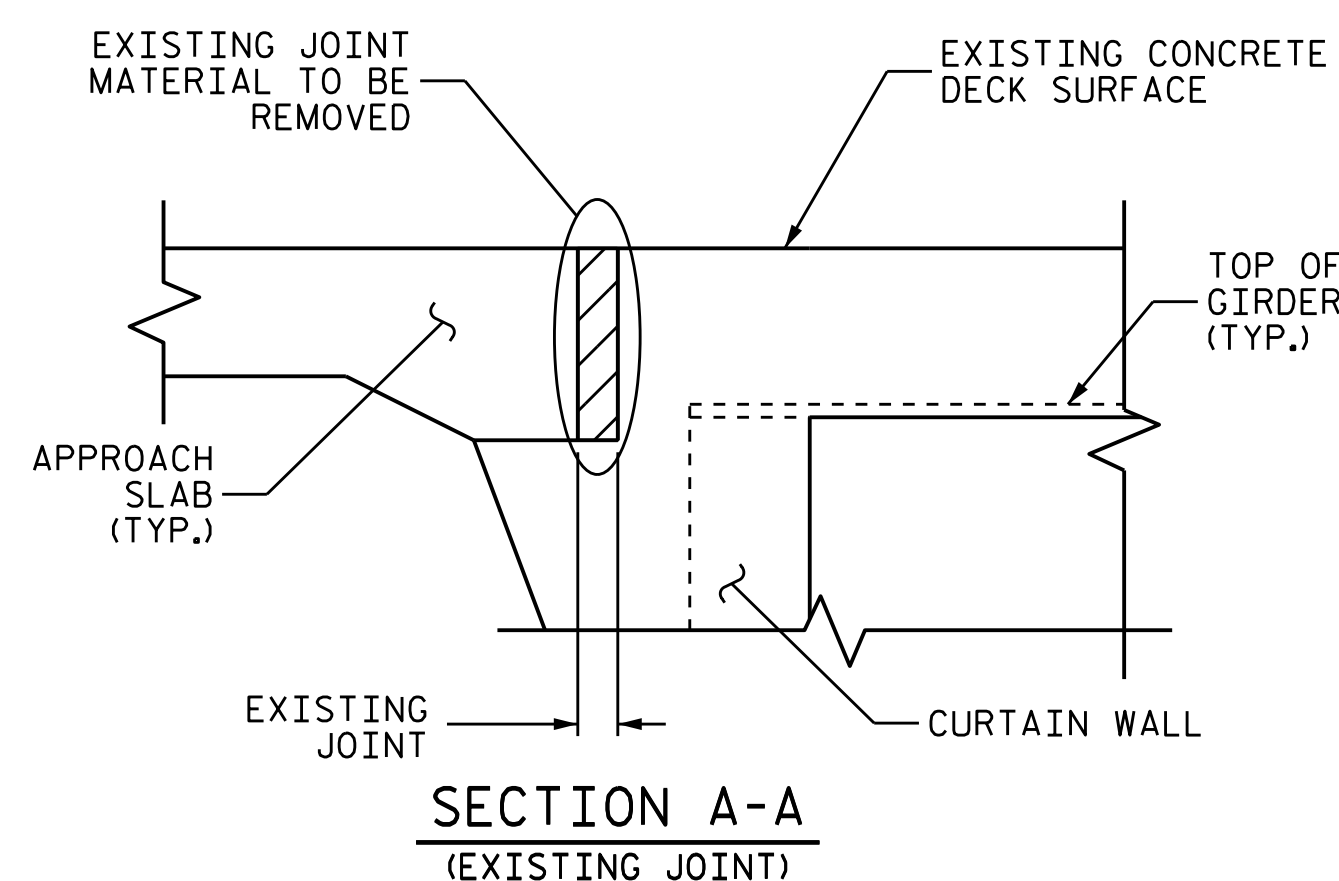
THE CONTRACTOR WILL NOT BE PERMITTED TO FORM THE JOINTS IN LIEU OF SAWING THE JOINT.

FOR POURABLE SILICONE JOINT SEALANT, SEE SPECIAL PROVISIONS.

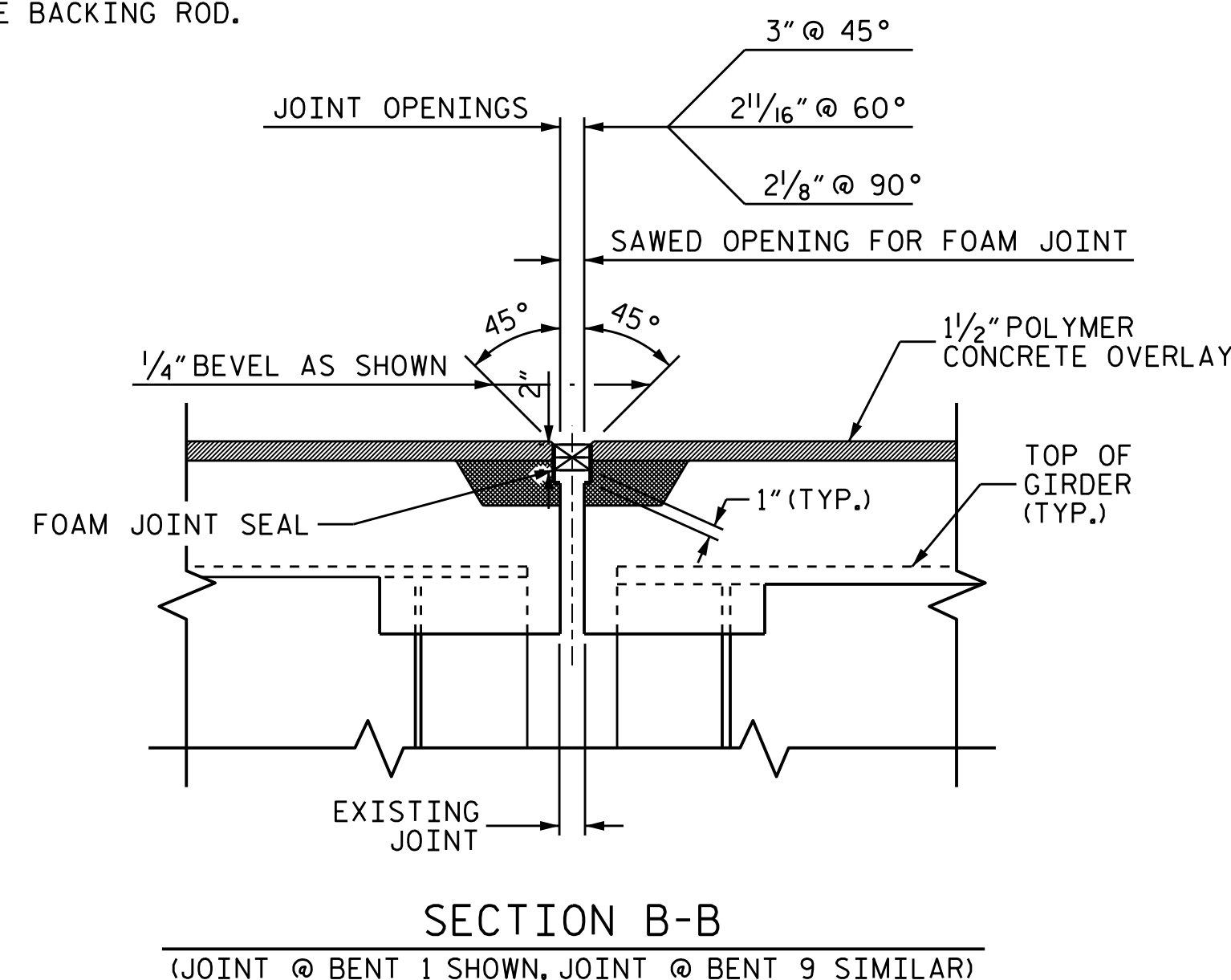
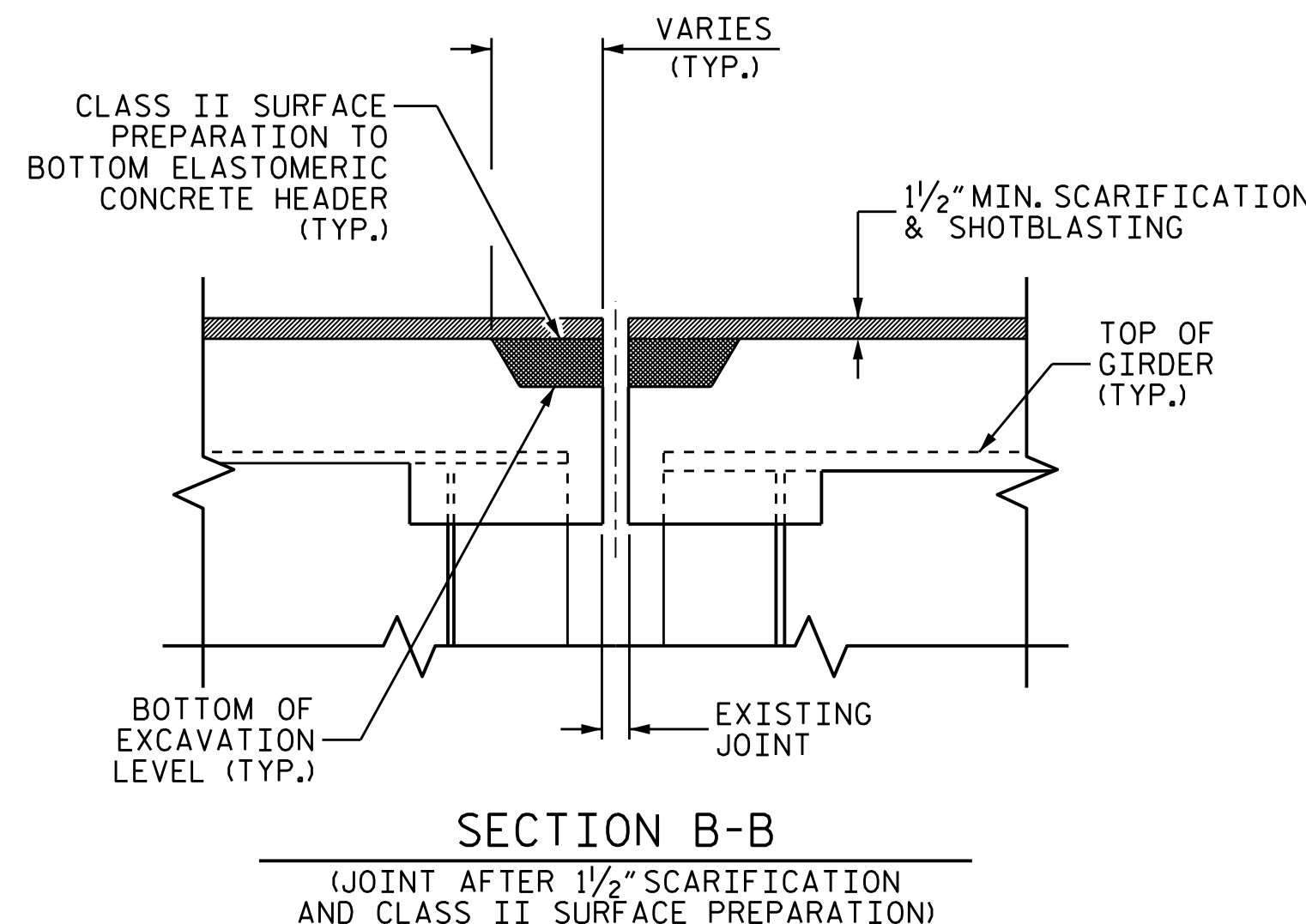
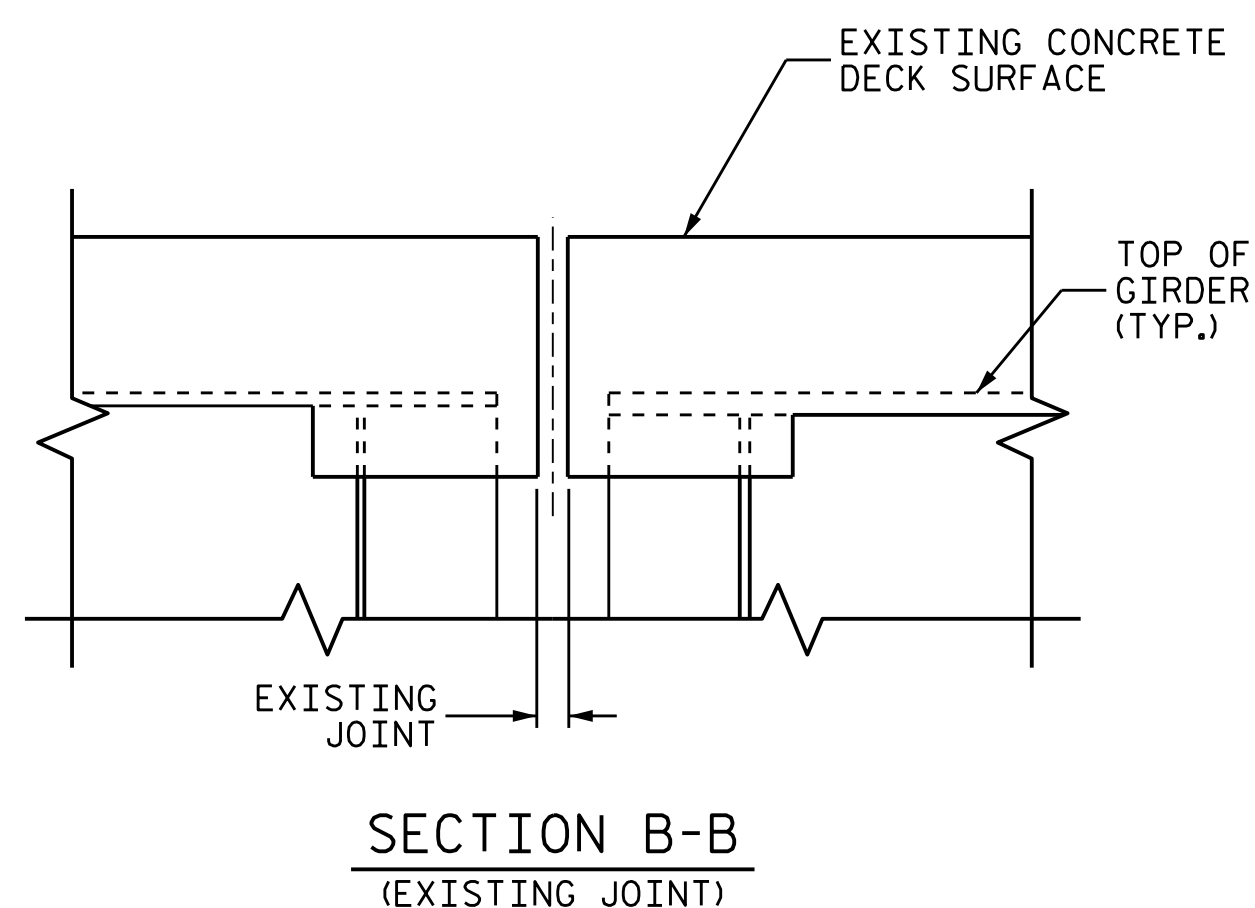
CONTRACTOR SHALL FIELD VERIFY THE EXISTING JOINT OPENING PRIOR TO ORDERING THE BACKER ROD.

THE BACKER ROD SHALL MEET THE MANUFACTURER'S RECOMMENDATION FOR THE SIZE OF THE JOINT OPENING.

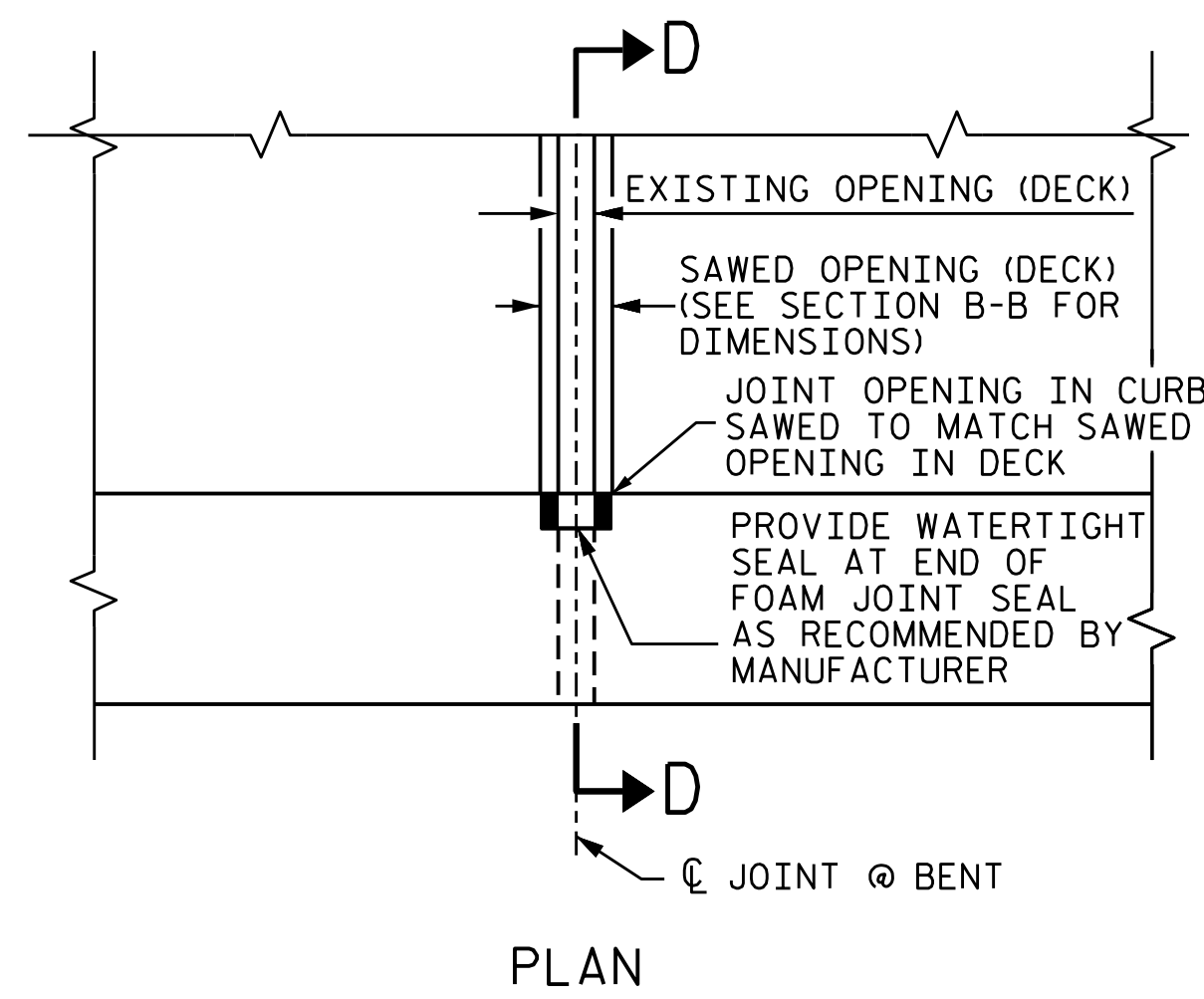
THE MANUFACTURER IS TO PROVIDE THE NOMINAL UNCOMPRESSED SEAL WIDTH OF THE FOAM JOINT SEAL BASED ON JOINT OPENINGS AT THE BENTS 1 AND 9.



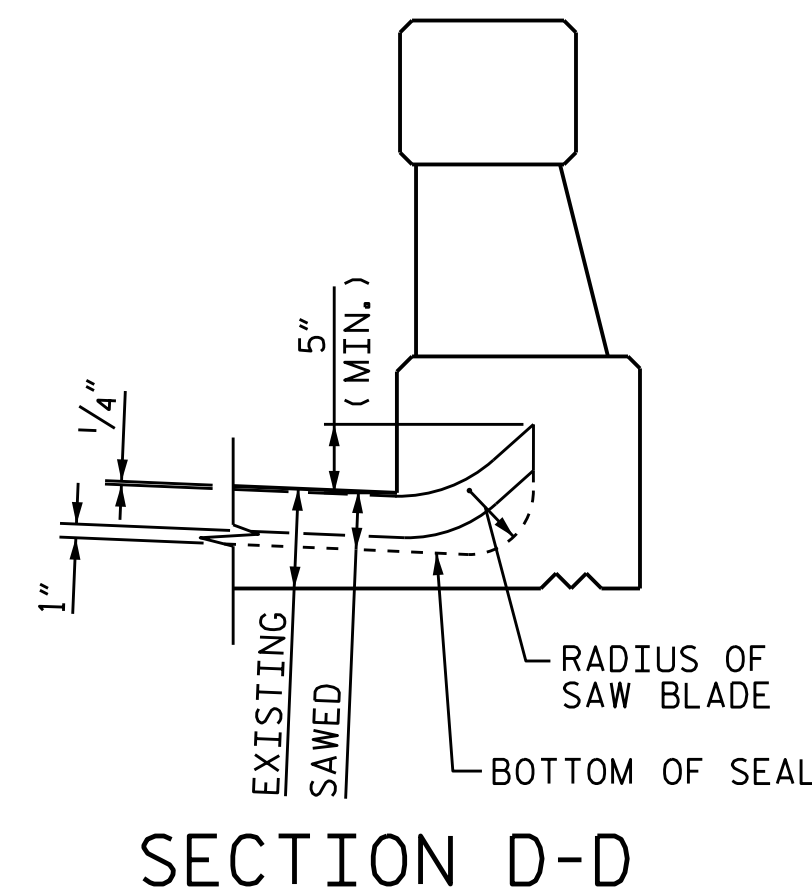
* CONTRACTOR TO FIELD VERIFY WIDTH OF EXISTING JOINT AT APPROACH SLABS FOR INSTALLATION OF THE PROPER SIZE BACKING ROD.



POURABLE SILICONE JOINT SEALANT	
END BENT 1	24.0 LIN. FT.
END BENT 2	24.0 LIN. FT.
FOAM JOINT SEALS FOR PRESERVATION	
BENT 1	36.0 LIN. FT.
BENT 9	36.0 LIN. FT.



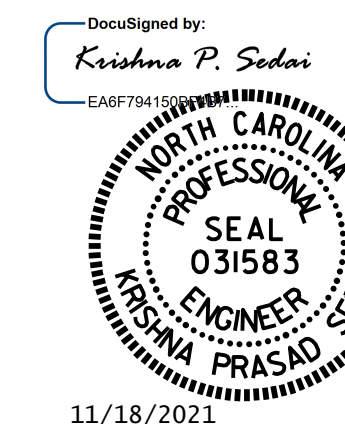
JOINT SEAL DETAILS



FOAM JOINT SEAL SHALL BE FACTORY FORMED OR CUT, HEAT WELDED AND TURNED UP PARALLEL TO FACE OF CURB.

PROJECT NO. 15BPR.21
MONTGOMERY COUNTY
 BRIDGE NO. 610006

SHEET 1 OF 2



STATE OF NORTH CAROLINA
 DEPARTMENT OF TRANSPORTATION
 RALEIGH

JOINT DETAILS

DRAWN BY : R.L. PUTEK DATE : 12/2018
 CHECKED BY : E. A. BAYISSA DATE : 12/2018

REVISIONS						SHEET NO.
NO.	BY:	DATE:	NO.	BY:	DATE:	S1-10
1			3			TOTAL SHEETS
2			4			34