

28031

COMPUTED BY: VHB DATE: 12/6/2021
CHECKED BY: VHB DATE: 12/6/2021

NORTH CAROLINA DEPARTMENT OF TRANSPORTATION
DIVISION OF HIGHWAYS

PROJECT NO. U-5896 SHEET NO. 3D-2

Note: Invert Elevations indicated are for Bid Purposes only and shall not be used for project construction stakeout. See "Standard Specifications For Roads and Structures, Section 300-5".

LIST OF PIPES, ENDWALLS, ETC. (FOR PIPES 48 INCHES & UNDER)

Table with columns for Line & Station, Offset, Structure Number, Top Elevation, Invert Elevation, Minimum Required Slope, Pipe Classifications (Side Drain Pipe, Ductile Iron, R.C. Pipe Class III/IV), Quantities for Sealed Drainage Structures, Quantities for Drainage Structures, Frame/Grates/Hood, Concrete Transitional Section, and Remarks. Includes a SHEET TOTALS row at the bottom.

COMPUTED BY: VHB DATE: 12/6/2021
CHECKED BY: VHB DATE: 12/6/2021

NORTH CAROLINA DEPARTMENT OF TRANSPORTATION
DIVISION OF HIGHWAYS

PROJECT NO. U-5896 SHEET NO. 3D-3

Note: Invert Elevations indicated are for Bid Purposes only and shall not be used for project construction stakeout. See "Standard Specifications For Roads and Structures, Section 300-5".

LIST OF PIPES, ENDWALLS, ETC. (FOR PIPES 48 INCHES & UNDER)

Table with columns for Line & Station, Offset, Structure Number, Invert Elevation, Minimum Required Slope, Pipe Classifications (Side Drain Pipe, Ductile Iron Pipe, R.C. Pipe Class III/IV), Quantities for Sealed Drainage Structures, Quantities for Drainage Structures, Frame, Grates, and Hood, Grate Type, and Remarks. Includes a SHEET TOTALS row at the bottom.

ABBREVIATIONS table listing various materials and components like C.A.A. CORRUGATED ALUMINIUM ALLOY, C.B. CATCH BASIN, etc.





28031

COMPUTED BY: VHB DATE: 12/6/2021
CHECKED BY: VHB DATE: 12/6/2021

NORTH CAROLINA DEPARTMENT OF TRANSPORTATION
DIVISION OF HIGHWAYS

PROJECT NO. U-5896 SHEET NO. 3D-6

Note: Invert Elevations indicated are for Bid Purposes only and shall not be used for project construction stakeout. See "Standard Specifications For Roads and Structures, Section 300-5".

LIST OF PIPES, ENDWALLS, ETC. (FOR PIPES 48 INCHES & UNDER)

Main data table with columns for Line & Station, Offset, Structure Number, Invert Elevation, Pipe Classifications (R.C. Pipe Class III/IV, Ductile Iron, etc.), Quantities for Sealed Drainage Structures, Quantities for Drainage Structures, Frame/Grates/Hood, Concrete Transitional Section, and Remarks. Includes sub-totals for SHEET TOTALS and PROJECT TOTALS.

ABBREVIATIONS table listing codes like C.A.A., C.B., C.S., D.I., G.D.I., H.D.P.E., J.B., M.H., N.S., P.V.C., R.C., T.B.D.I., T.B.J.B., W.S., O.E.P. and their corresponding material descriptions.



COMPUTED BY: J.R. Swartley DATE: 5/2/19  
 CHECKED BY: S.S. Laney DATE: 5/2/19  
 COMPUTED BY: J. B. Barfield DATE: 10/15/19  
 CHECKED BY: \_\_\_\_\_ DATE: \_\_\_\_\_

PROJECT NO. U-5896  
 SHEET NO. 3G-1

**STATE OF NORTH CAROLINA  
 DIVISION OF HIGHWAYS**

**SUMMARY OF SUBSURFACE DRAINAGE**

LINE	Station	Station	Location LT/RT/CL	Drain Type* UD/BD/SD	LF
-RPA-	20+00	22+25	LT	SD	225
-RPC-	20+00	22+50	LT	SD	250
CONTINGENCY				SD	250
<b>TOTAL LF:</b>					725

\*UD = Underdrain  
 \*BD = Blind Drain  
 \*SD = Subsurface Drain

**SUMMARY OF GEOTEXTILE  
 FOR PAVEMENT STABILIZATION**

LINE	Station	Station	Geotextile for Pavement Stabilization SY	Class IV Subgrade Stabilization TONS
-L-	10+50	15+75	1500	-
-L-	19+50	21+50	600	-
-L-	21+25	22+75	1350	-
-L-	25+00	25+60	1600	-
CONTINGENCY				
CONTINGENCY				
<b>TOTAL SY/TONS:</b>			5050	0*

\*Total tons of "Class IV Subgrade Stabilization" is only the estimated quantity for pavement stabilization and may only represent a portion of the subgrade stabilization quantity shown in the Item Sheets of the Proposal.

**SUMMARY OF AGGREGATE SUBGRADE/STABILIZATION**

LINE	Station	Station	Aggregate Type* ASU(1/2)/AST	Aggregate Thickness INCHES [8" for ASU(2)]	Shallow Undercut CY	Class IV Subgrade Stabilization TONS	Geotextile for Soil Stabilization SY	Stabilizer Aggregate TONS	Class IV Aggregate Stabilization TONS
-Y-	14+25	17+25	ASU	12	300	575	900		
-L-	6+40	44+25	ASU 2	8		5987	13758		
-RPA-	12+69	23+65	ASU 2	8		1378	3166		
-RPB-	13+76	20+97	ASU 2	8		907	2083		
-RPC-	13+67	23+72	ASU 2	8		1263	2903		
-RPD-	13+23	25+76	ASU 2	8		1575	3620		
CONTINGENCY			AST					250	
CONTINGENCY			ASU 1	12	250	500	750		
CONTINGENCY			ASU	12	100	200	50		
<b>TOTAL CY/TONS/SY:</b>					650	12385**	27230**	250	0

\*ASU(1/2) = Aggregate Subgrade (Type 1 or 2)  
 \*AST = Aggregate Stabilization  
 \*\*Total tons of "Class IV Subgrade Stabilization" and total square yards of "Geotextile for Soil Stabilization" are only the estimated quantities for ASU(1/2)/AST and may only represent a portion of the subgrade stabilization and geotextile quantities shown in the Item Sheets of the Proposal.

**SUMMARY OF ROCK PLATING**

LINE	Beginning Slope (H:V)	Approx. Station	Ending Slope (H:V)	Approx. Station	Location LT/RT	Rock Plating Detail No. 1/2/3/4	Riprap Class* 1/2/B	Rock Plating SY
-W1-	1.5:1	10+50	1.5:1	11+50	LT	1	*	190
-W1-	1.5:1	12+60	1.5:1	14+00	LT	1	*	400
<b>TOTAL SY:</b>								590

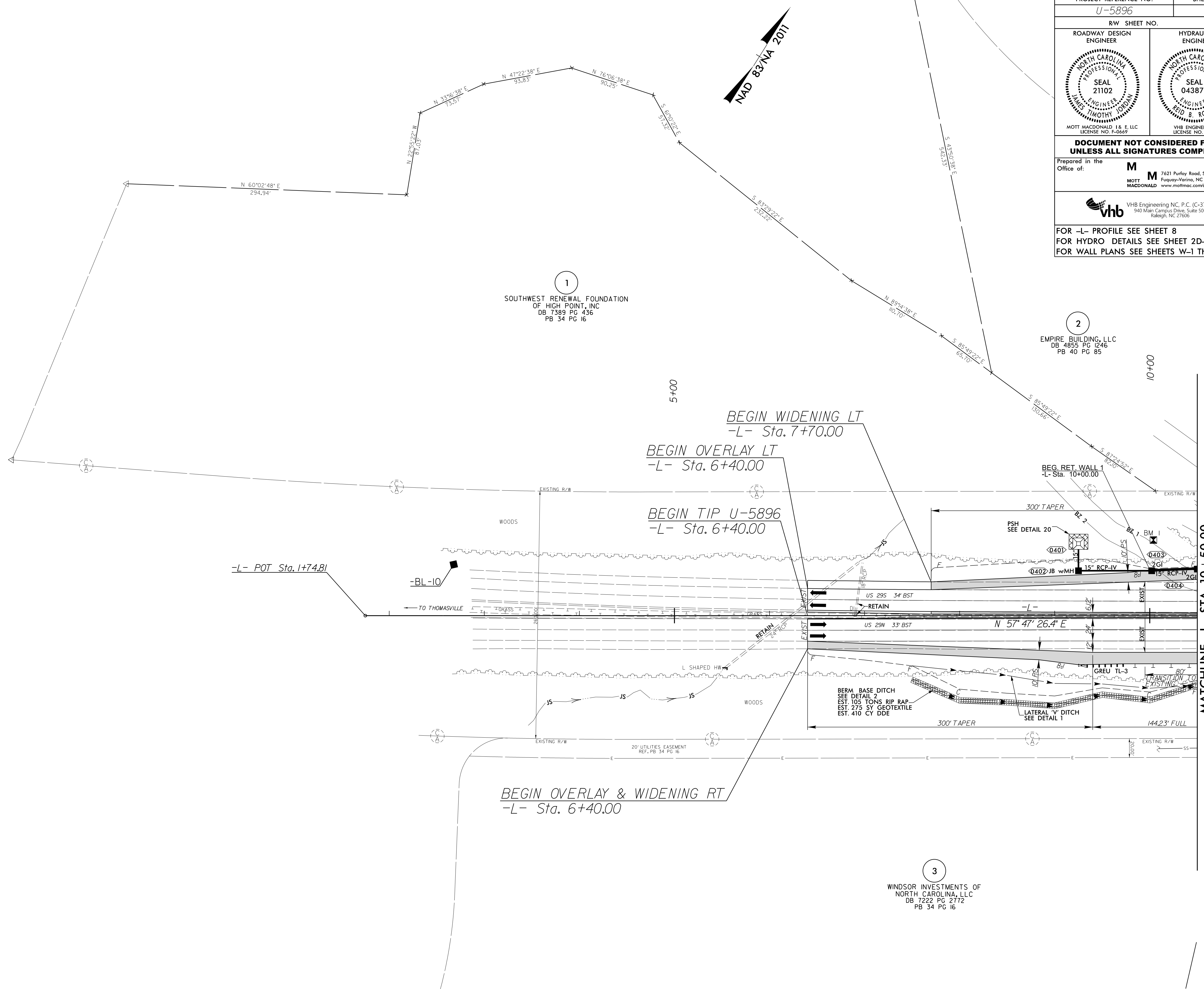
\*Use Class 1, 2 or B riprap if riprap class is not shown for rock plating location.





8/17/99

PROJECT REFERENCE NO. <i>U-5896</i>		SHEET NO. 4
RW SHEET NO.		
ROADWAY DESIGN ENGINEER	HYDRAULICS ENGINEER	
DOCUMENT NOT CONSIDERED FINAL UNLESS ALL SIGNATURES COMPLETED		
Prepared in the Office of:	MOTT MACDONALD VHB ENGINEERING	
MOTT MACDONALD 1 & E, LLC LICENSE NO. F-0669 VHB ENGINEERING LICENSE NO. C-3705		
Prepared in the Office of: MOTT MACDONALD 7621 Purfoy Road, Suite 115 Fuquay-Varina, NC 27526 www.mottmac.com/america		
VHB ENGINEERING N.C. (C-3705) 940 Main Campus Drive, Suite 500 Raleigh, NC 27606		
FOR -L- PROFILE SEE SHEET 8 FOR HYDRO DETAILS SEE SHEET 2D-1 FOR WALL PLANS SEE SHEETS W-1 THRU W-7		



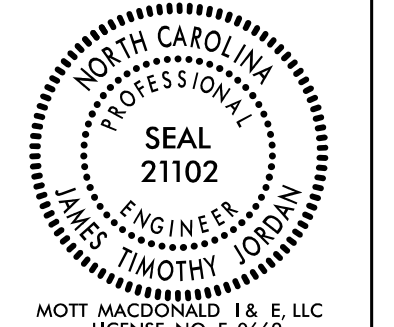
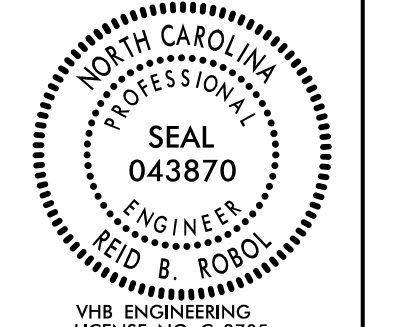

1  
SOUTHWEST RENEWAL FOUNDATION  
OF HIGH POINT, INC  
DB 7389 PG 436  
PB 34 PG 16

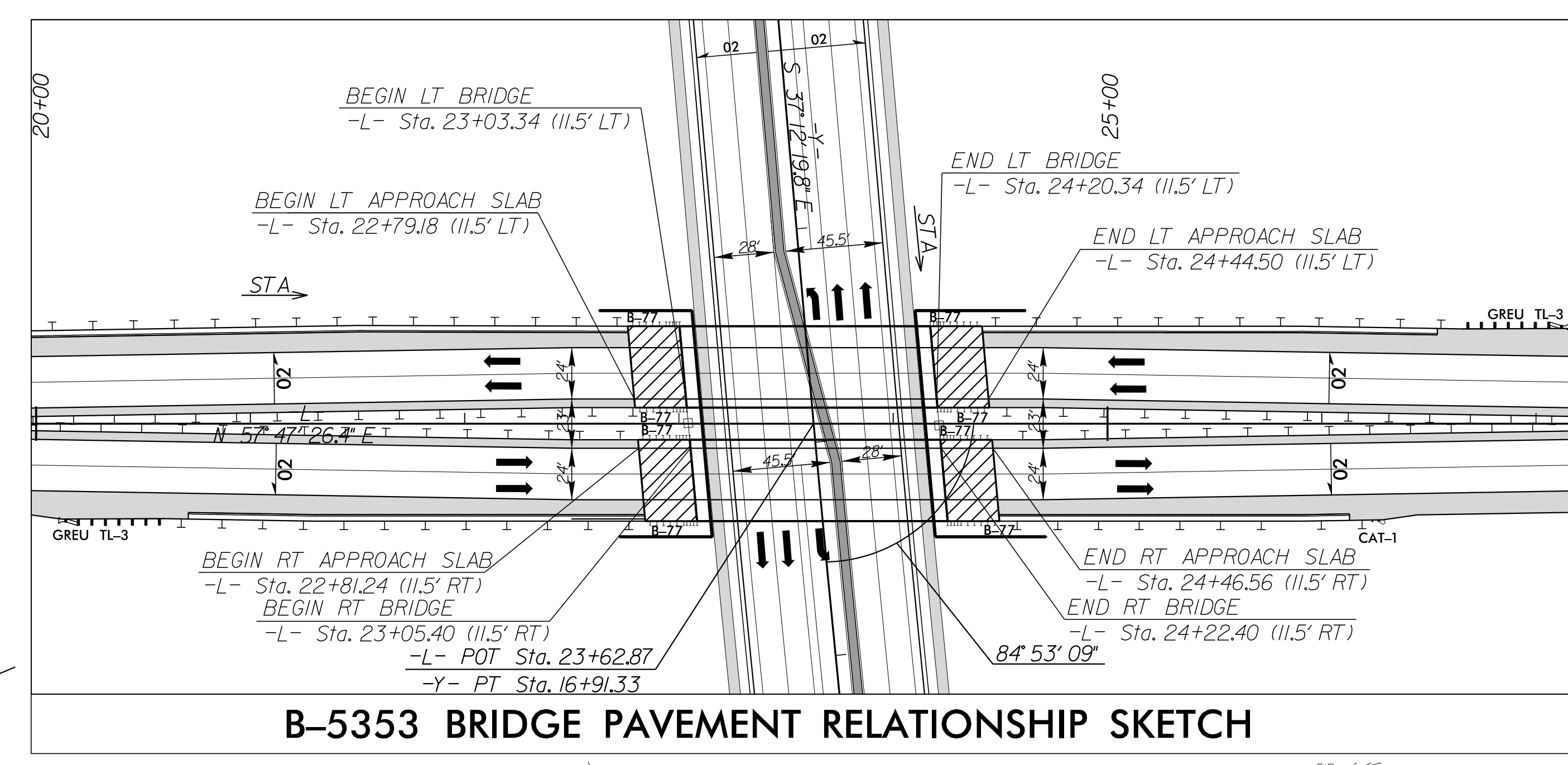
2  
EMPIRE BUILDING, LLC  
DB 4855 PG 1246  
PB 40 PG 85

3  
WINDSOR INVESTMENTS OF  
NORTH CAROLINA, LLC  
DB 1222 PG 2772  
PB 34 PG 16

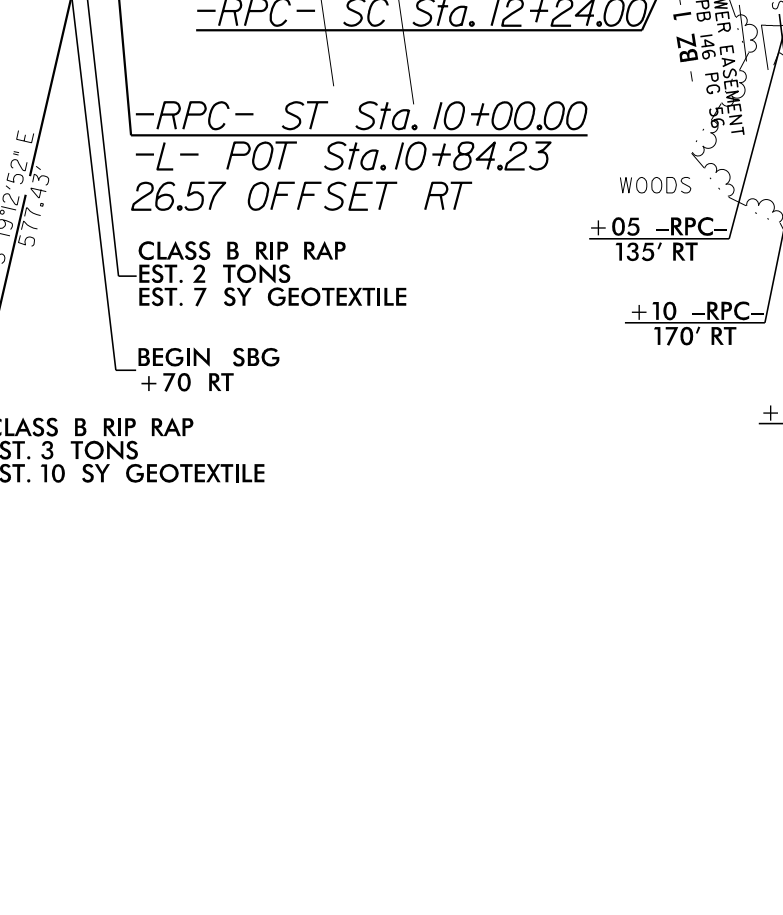
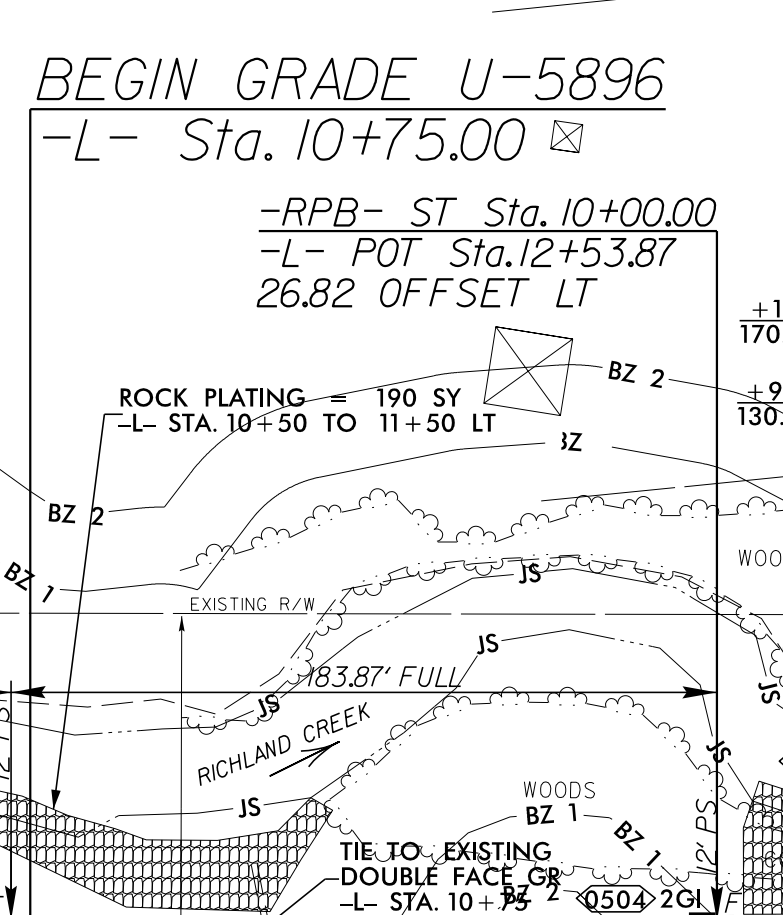
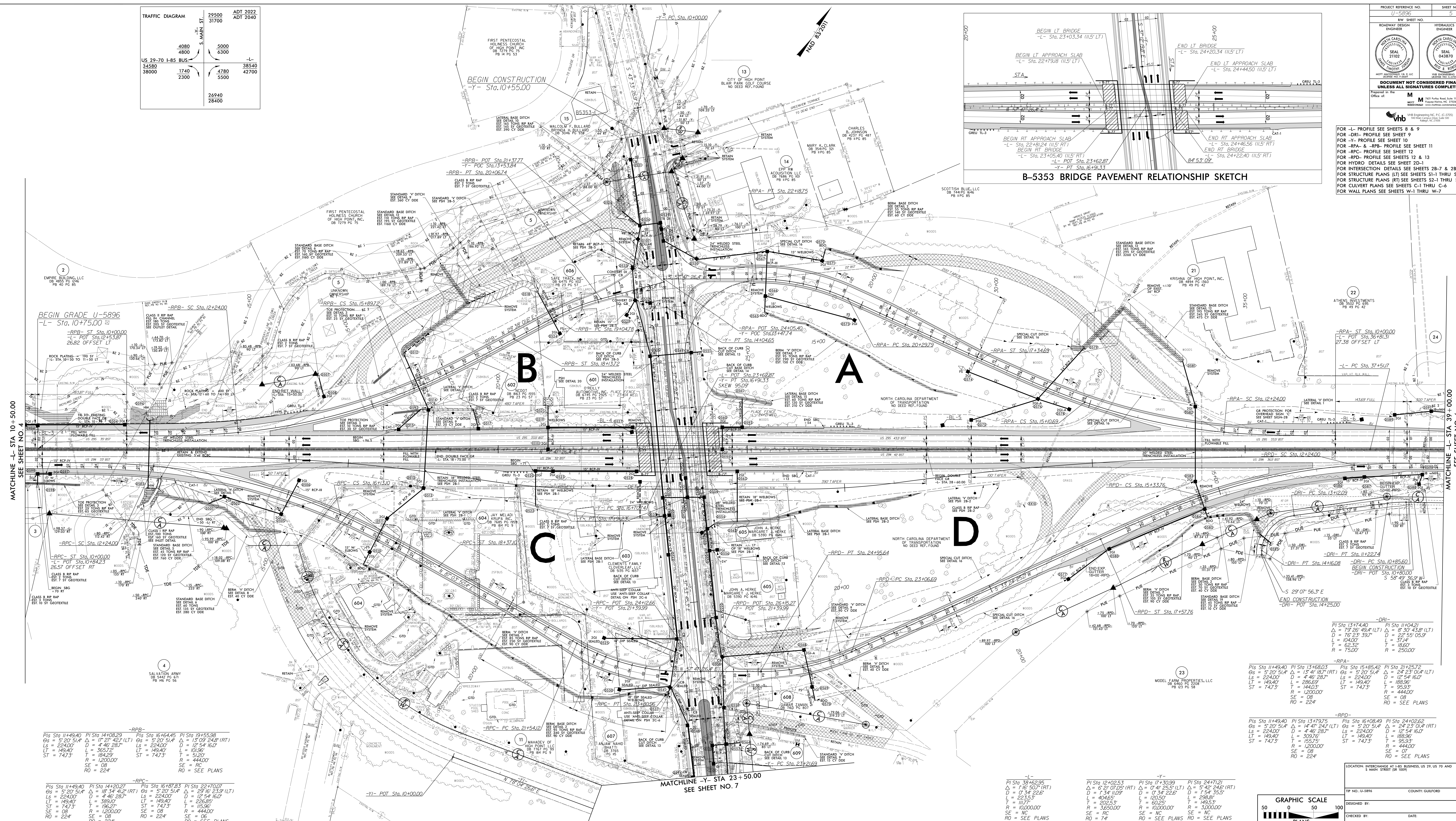
11/29/2021  
8:16:05 AM  
C:\Users\jordan\OneDrive\Projects\U-5896\rdw\psh04.dgn  
jordan

TRAFFIC DIAGRAM	29500	ADT 2022
	31700	ADT 2040
	4080	5000
	4800	6300
US 29-70 I-85 BUS	34580	38540
	38000	42700
	1740	4780
	2300	5500
	26940	28400

PROJECT REFERENCE NO.	U-5896	SHEET NO.	5
ROADWAY DESIGN ENGINEER	HYDRAULICS ENGINEER		
			
DOCUMENT NOT CONSIDERED FINAL UNLESS ALL SIGNATURES COMPLETED			
Prepared in the Office of:			
			

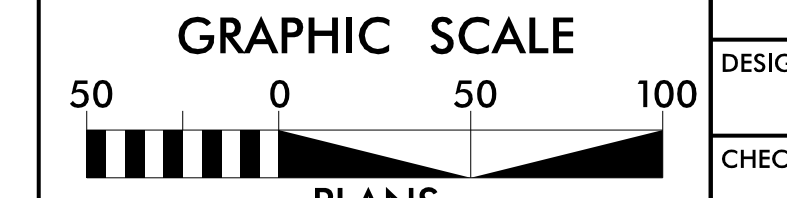


FOR -L- PROFILE SEE SHEETS 8 & 9  
 FOR -DR- PROFILE SEE SHEET 9  
 FOR -Y- PROFILE SEE SHEET 10  
 FOR -RPA- & -RPB- PROFILE SEE SHEET 11  
 FOR -RPC- PROFILE SEE SHEET 12  
 FOR -RPD- PROFILE SEE SHEETS 12 & 13  
 FOR HYDRO DETAILS SEE SHEET 2D-1  
 FOR INTERSECTION DETAILS SEE SHEETS 2B-7 & 2B-8  
 FOR STRUCTURE PLANS (LT) SEE SHEETS S1-1 THRU S1-26  
 FOR STRUCTURE PLANS (RT) SEE SHEETS S2-1 THRU S2-26  
 FOR CURVE PLANS SEE SHEETS C-1 THRU C-6  
 FOR WALL PLANS SEE SHEETS W-1 THRU W-6



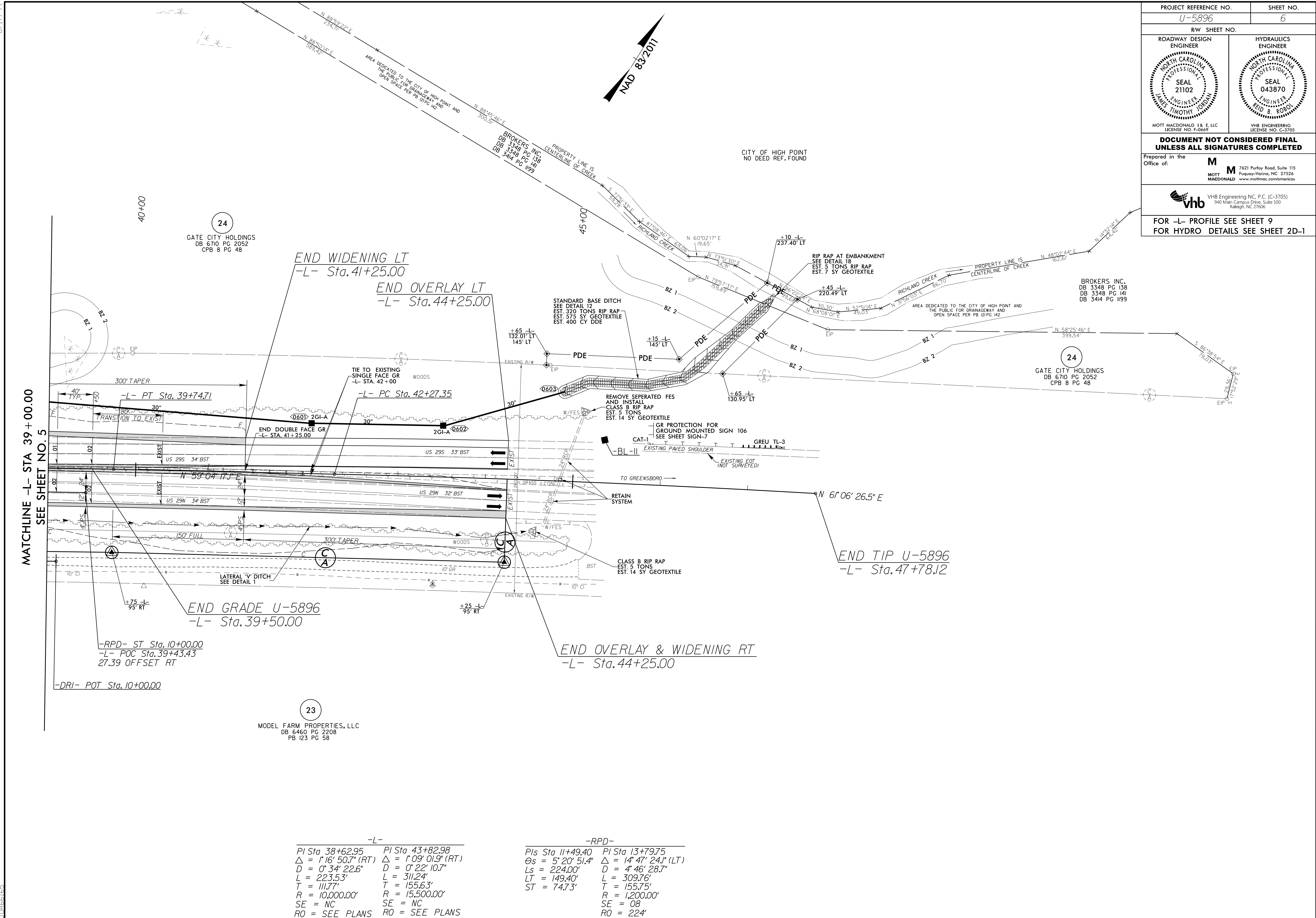
-RPA-	Sta 11+49.40	Sta 14+08.29	Sta 16+64.45	Sta 19+55.98
Gs	5' 20" 51.4"	17' 21" 42.1" (LT)	5' 20" 51.4"	17' 21" 42.1" (LT)
D	224.00'	4' 46" 28.7"	224.00'	4' 46" 28.7"
Ls	149.40'	184.52'	149.40'	184.52'
LT	143.40'	184.52'	143.40'	184.52'
ST	747.3'	747.3'	747.3'	747.3'
SE	08	08	08	08
RO	224'	224'	224'	224'

-L-	Sta 38+62.95	Sta 12+02.53	Sta 17+30.99	Sta 24+71.21
Gs	7' 16" 50.7" (RT)	17' 47" 24.1" (RT)	17' 47" 24.1" (RT)	17' 47" 24.1" (RT)
D	1000.00'	1000.00'	1000.00'	1000.00'
Ls	1000.00'	1000.00'	1000.00'	1000.00'
LT	1000.00'	1000.00'	1000.00'	1000.00'
ST	1000.00'	1000.00'	1000.00'	1000.00'
SE	NC	NC	NC	NC
RO	74'	74'	74'	74'



LOCATION: INTERCHANGE AT I-85 BUSINESS US 29 US 70 AND S MAIN STREET (R 100)  
 TIP NO.: U-5896 COUNTY: GUILFORD  
 DESIGNED BY: \_\_\_\_\_ DATE: \_\_\_\_\_  
 CHECKED BY: \_\_\_\_\_ DATE: \_\_\_\_\_

PROJECT REFERENCE NO. <b>U-5896</b>	SHEET NO. <b>6</b>
RW SHEET NO.	
ROADWAY DESIGN ENGINEER	HYDRAULICS ENGINEER
MOTT MACDONALD I & E, LLC LICENSE NO. F-0669	VHB ENGINEERING LICENSE NO. C-3705
<b>DOCUMENT NOT CONSIDERED FINAL UNLESS ALL SIGNATURES COMPLETED</b>	
Prepared in the Office of:	<b>M</b> 7621 Purfoy Road, Suite 115 Fuquay-Varina, NC 27526 www.mottmac.com/mottmac
FOR -L- PROFILE SEE SHEET 9 FOR HYDRO DETAILS SEE SHEET 2D-1	

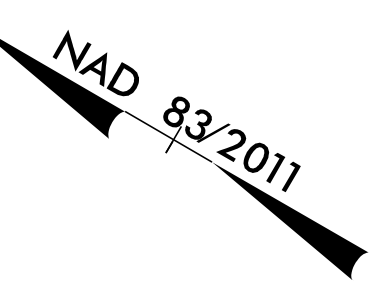


8.17.1999  
 11/29/2021  
 B:\Projects\U-5896\Drawings\U-5896\_rdw\_esh06.dgn  
 JTB:66165

-L-		-RPD-	
PI Sta 38+62.95	PI Sta 43+82.98	PIs Sta 11+49.40	PI Sta 13+79.75
$\Delta = 1' 16" 50.7" (RT)$	$\Delta = 1' 09" 01.9" (RT)$	$\theta_s = 5' 20' 51.4"$	$\Delta = 14' 47' 24.1" (LT)$
$D = 0' 34' 22.6"$	$D = 0' 22' 10.7"$	$L_s = 224.00'$	$D = 4' 46' 28.7"$
$L = 223.53'$	$L = 311.24'$	$LT = 149.40'$	$L = 309.76'$
$T = 111.77'$	$T = 155.63'$	$ST = 74.73'$	$T = 155.75'$
$R = 10,000.00'$	$R = 15,500.00'$		$R = 1,200.00'$
$SE = NC$	$SE = NC$		$SE = 08$
$RO = SEE PLANS$	$RO = SEE PLANS$		$RO = 224'$

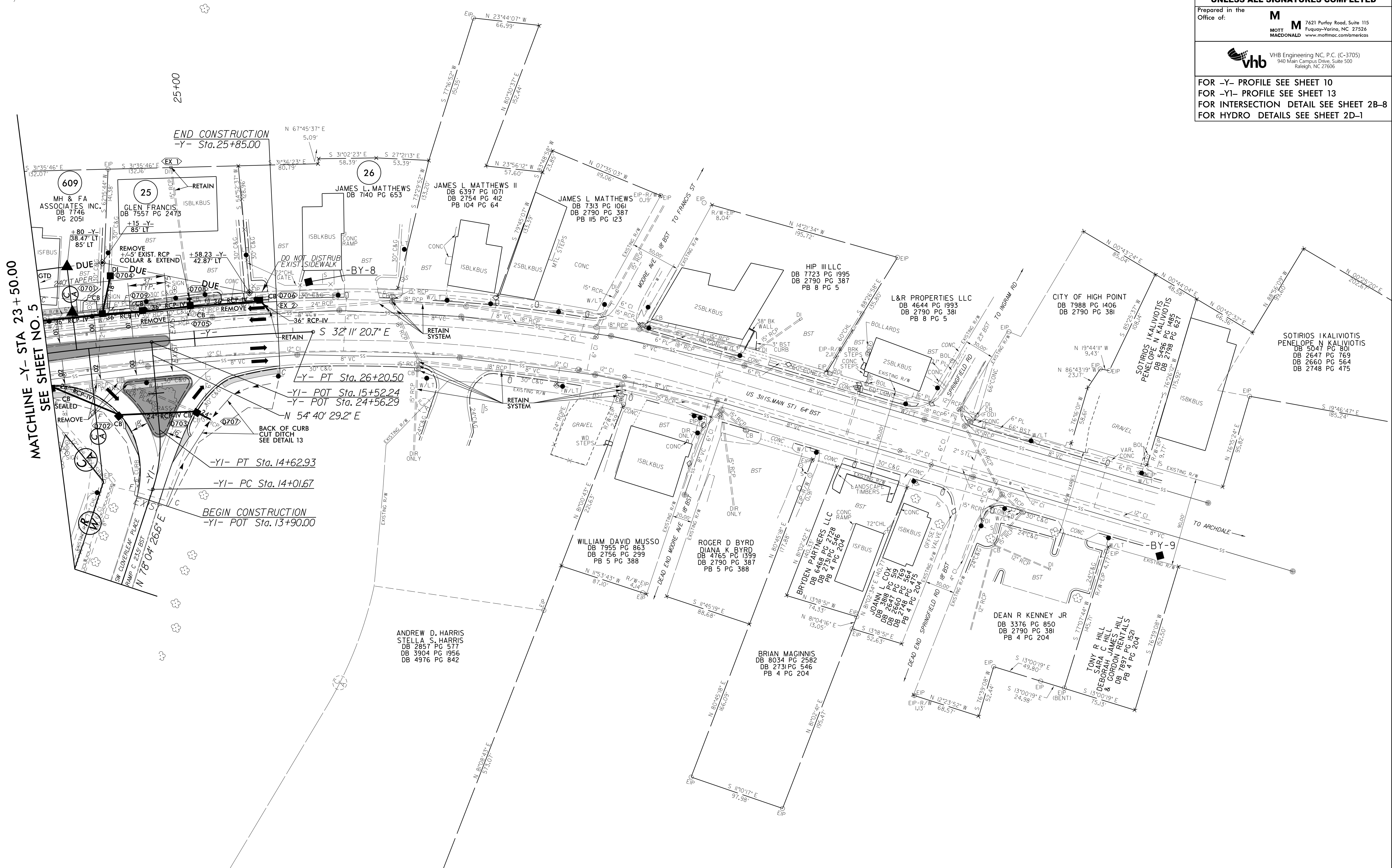
8.17/99

-Y-			-Y1-		
PI Sta 12+02.53	PI Sta 17+30.99	PI Sta 24+71.21	PI Sta 14+32.74		
$\Delta = 6' 21'' 07.05''$ (RT)	$\Delta = 0' 41'' 25.5''$ (LT)	$\Delta = 5' 42'' 24.6''$ (RT)	$\Delta = 23' 23'' 57.3''$ (LT)		
$D = 1' 34'' 11.09''$	$D = 0' 34'' 22.6''$	$D = 1' 54'' 35.5''$	$D = 38' 11'' 49.9''$		
$L = 404.65'$	$L = 120.50'$	$L = 298.81'$	$L = 61.26'$		
$T = 202.53'$	$T = 60.25'$	$T = 149.53'$	$T = 31.06'$		
$R = 3,650.00'$	$R = 10,000.00'$	$R = 3,000.00'$	$R = 150.00'$		
SE = RC	SE = NC	SE = NC	SE = NC		
RO = 74'	RO = SEE PLANS	RO = SEE PLANS	RO = SEE PLANS		



PROJECT REFERENCE NO. U-5896		SHEET NO. 7	
ROADWAY DESIGN ENGINEER		HYDRAULICS ENGINEER	
MOTT MACDONALD I & LLC LICENSE NO. F-0669		VHB ENGINEERING LICENSE NO. C-3705	
<b>DOCUMENT NOT CONSIDERED FINAL UNLESS ALL SIGNATURES COMPLETED</b>			
Prepared in the Office of:		<b>M</b> 7621 Purfoy Road, Suite 115 Fuquay-Varina, NC 27526 www.mottmac.com/mottmac	
FOR -Y- PROFILE SEE SHEET 10 FOR -Y1- PROFILE SEE SHEET 13 FOR INTERSECTION DETAIL SEE SHEET 2B-8 FOR HYDRO DETAILS SEE SHEET 2D-1			

BALTIMORE RD 18' BST



12/21/2021  
 H:\Projects\2021\U-5896\Drawings\ProJ\U-5896\_r.dwg: psh07.dgn  
 10:56:15 AM

PROJECT REFERENCE NO. U-5896 SHEET NO. 8

ROADWAY DESIGN ENGINEER: NORTH CAROLINA PROFESSIONAL SEAL 21102 ENGINEER JAMES TIMOTHY JORDAN

HYDRAULICS ENGINEER: NORTH CAROLINA PROFESSIONAL SEAL 043870 ENGINEER FRED S. ROBO

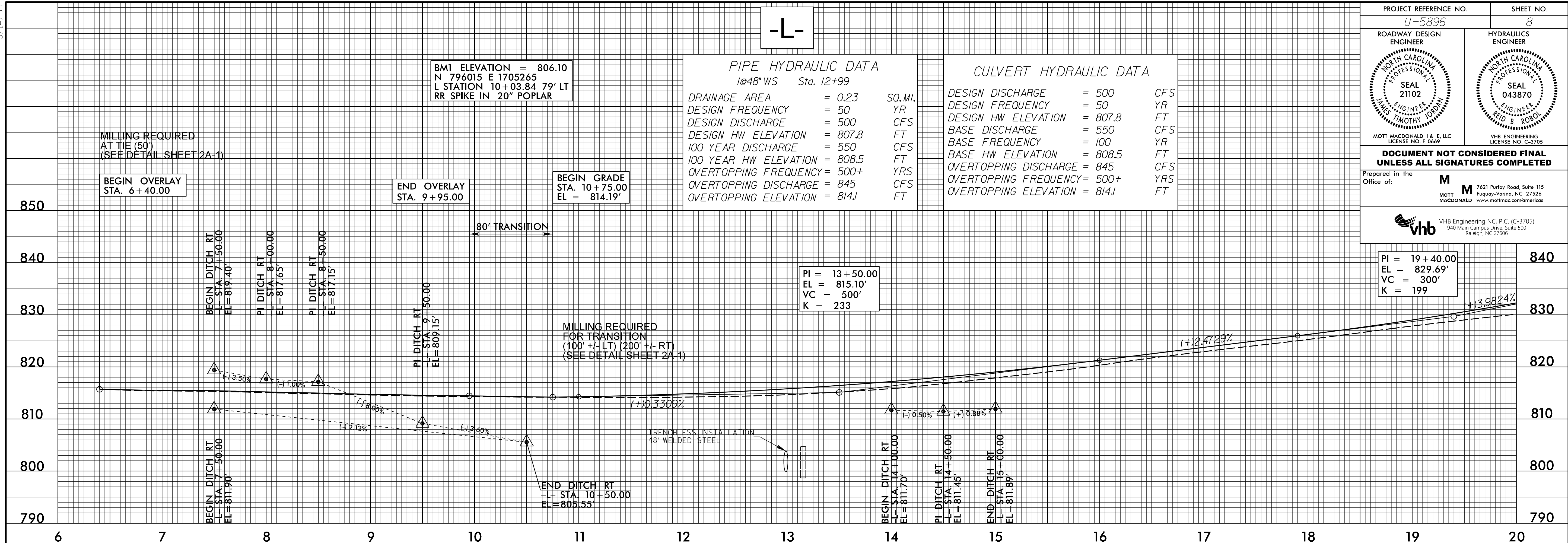
MOTT MACDONALD I & E, LLC LICENSE NO. F-0669

VHB ENGINEERING LICENSE NO. C-3705

**DOCUMENT NOT CONSIDERED FINAL  
UNLESS ALL SIGNATURES COMPLETED**

Prepared in the Office of: M MOTT MACDONALD 7621 Purfoy Road, Suite 115 Fuquay-Varina, NC 27526

VHB Engineering NC, P.C. (C-3705) 940 Main Campus Drive, Suite 500 Raleigh, NC 27606



BMI ELEVATION = 806.10  
 N 796015 E 1705265  
 L STATION 10+03.84 79' LT  
 RR SPIKE IN 20' POPLAR

PIPE HYDRAULIC DATA  
 @48" WS Sta. 12+99

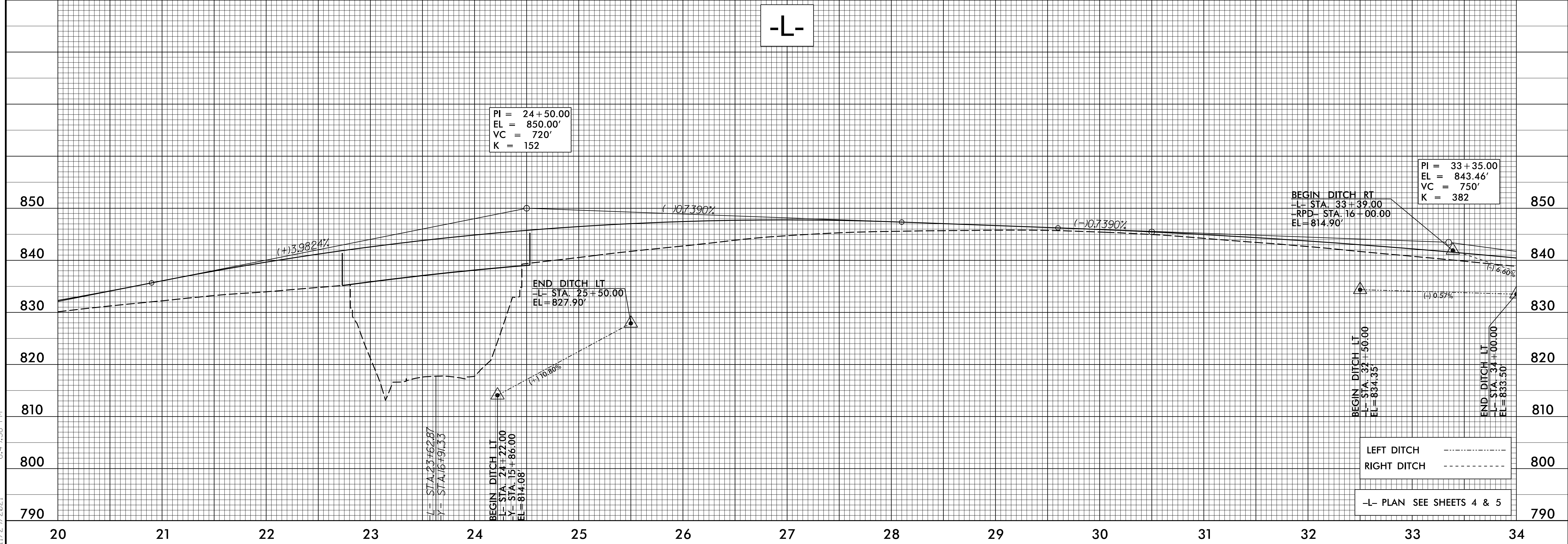
DRAINAGE AREA	=	0.23	SQ. MI.
DESIGN FREQUENCY	=	50	YR
DESIGN DISCHARGE	=	500	CFS
DESIGN HW ELEVATION	=	807.8	FT
100 YEAR DISCHARGE	=	550	CFS
100 YEAR HW ELEVATION	=	808.5	FT
OVERTOPPING FREQUENCY	=	500+	YRS
OVERTOPPING DISCHARGE	=	845	CFS
OVERTOPPING ELEVATION	=	814J	FT

CULVERT HYDRAULIC DATA

DESIGN DISCHARGE	=	500	CFS
DESIGN FREQUENCY	=	50	YR
DESIGN HW ELEVATION	=	807.8	FT
BASE DISCHARGE	=	550	CFS
BASE FREQUENCY	=	100	YR
BASE HW ELEVATION	=	808.5	FT
OVERTOPPING DISCHARGE	=	845	CFS
OVERTOPPING FREQUENCY	=	500+	YRS
OVERTOPPING ELEVATION	=	814J	FT

PI = 13+50.00  
 EL = 815.10'  
 VC = 500'  
 K = 233

PI = 19+40.00  
 EL = 829.69'  
 VC = 300'  
 K = 199



PI = 24+50.00  
 EL = 850.00'  
 VC = 720'  
 K = 152

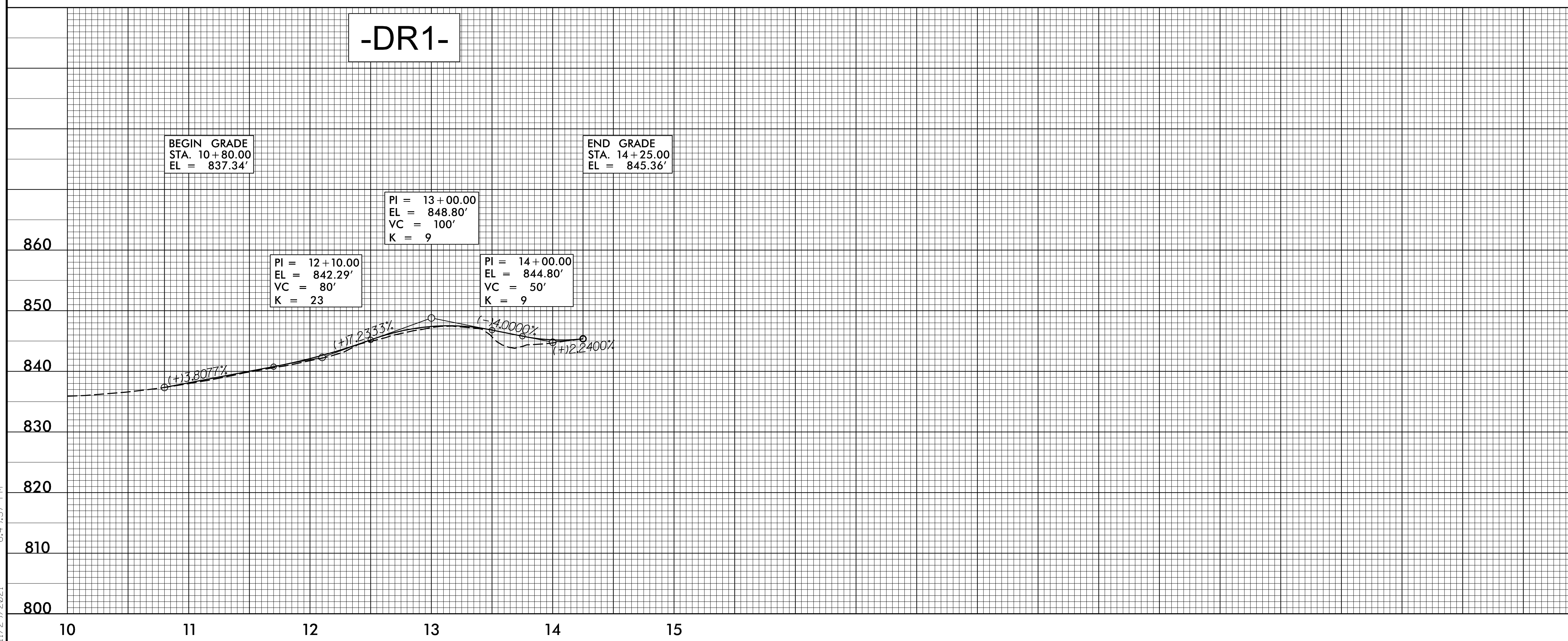
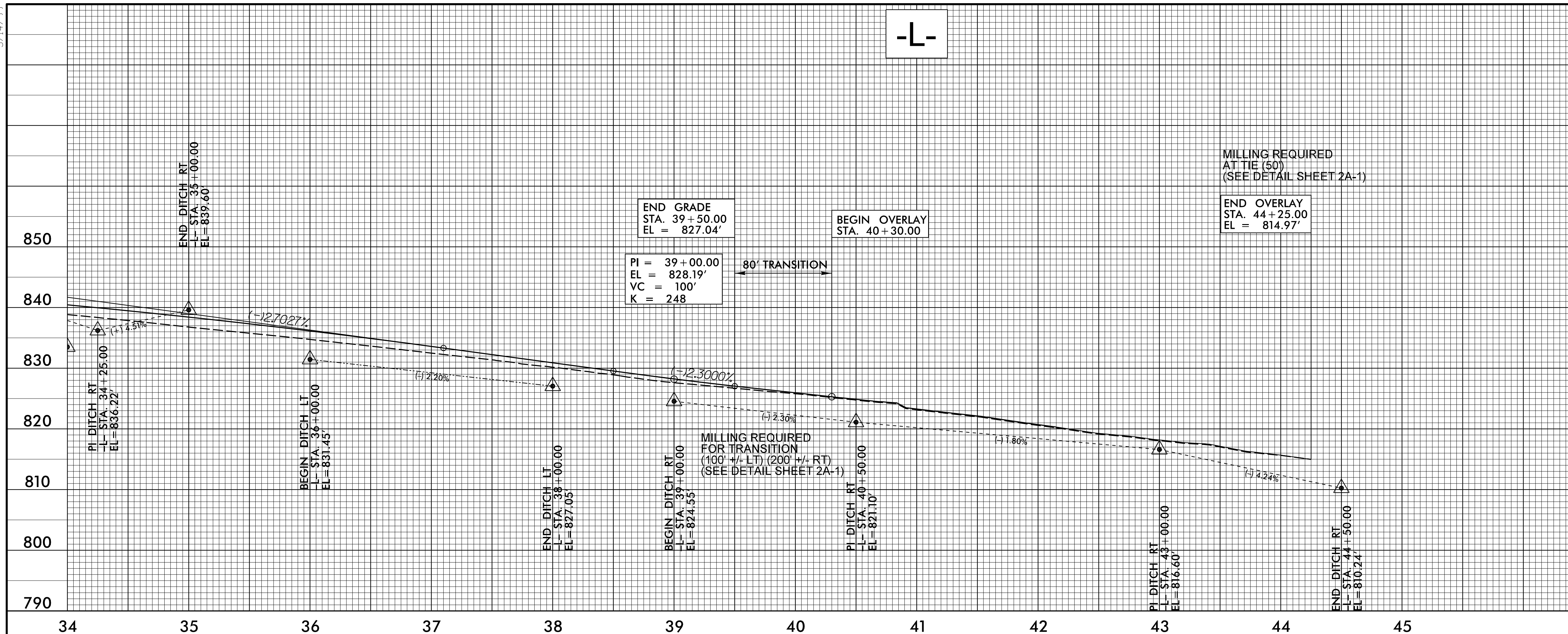
PI = 33+35.00  
 EL = 843.46'  
 VC = 750'  
 K = 382

LEFT DITCH - - - - -  
 RIGHT DITCH - - - - -

-L- PLAN SEE SHEETS 4 & 5

5/14/99

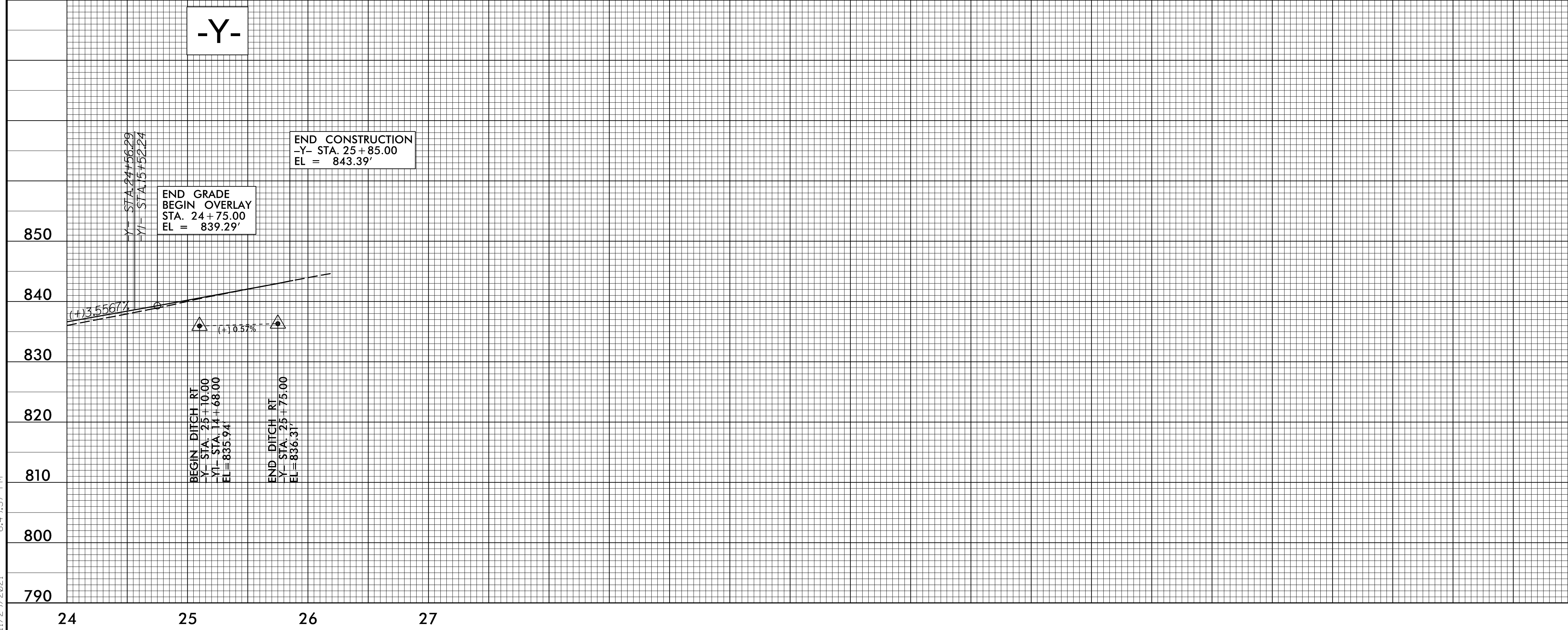
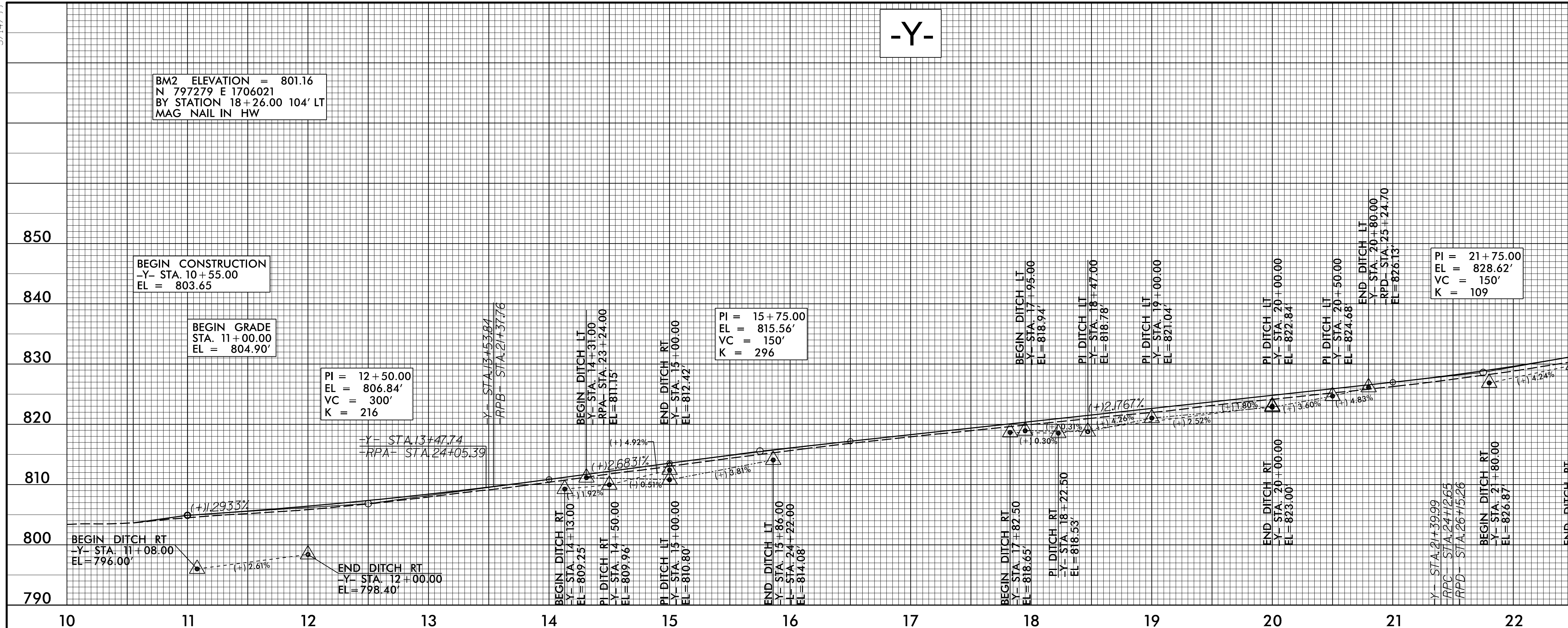
PROJECT REFERENCE NO. U-5896	SHEET NO. 9
ROADWAY DESIGN ENGINEER NORTH CAROLINA PROFESSIONAL SEAL 21102 JAMES TIMOTHY JORDAN	HYDRAULICS ENGINEER NORTH CAROLINA PROFESSIONAL SEAL 043870 JAMES TIMOTHY JORDAN
MOTT MACDONALD I & E, LLC LICENSE NO. F-0669	VHB ENGINEERING LICENSE NO. C-3705
<b>DOCUMENT NOT CONSIDERED FINAL UNLESS ALL SIGNATURES COMPLETED</b>	
Prepared in the Office of:	<b>M</b> MOTT MACDONALD
	7621 Purfoy Road, Suite 115 Fuquay-Varina, NC 27526 www.mottmac.com/americas
	VHB Engineering NC, P.C. (C-3705) 940 Main Campus Drive, Suite 500 Raleigh, NC 27606



JOR66165  
R:\Roadway\p\ro\U-5896\_r\dj\ef1\_psh.dgn  
11/29/2021 6:49:37 PM

5/14/99

PROJECT REFERENCE NO. U-5896	SHEET NO. 10
ROADWAY DESIGN ENGINEER NORTH CAROLINA PROFESSIONAL SEAL 21102 JAMES TIMOTHY JORDAN	HYDRAULICS ENGINEER NORTH CAROLINA PROFESSIONAL SEAL 043870 JAMES TIMOTHY JORDAN
MOTT MACDONALD I & E, LLC LICENSE NO. F-0669	
VHB ENGINEERING LICENSE NO. C-3705	
<b>DOCUMENT NOT CONSIDERED FINAL UNLESS ALL SIGNATURES COMPLETED</b>	
Prepared in the Office of: <b>M</b> MOTT MACDONALD	
VHB Engineering NC, P.C. (C-3705) 7621 Purfoy Road, Suite 115 Fuquay-Varina, NC 27326 940 Main Campus Drive, Suite 500 Raleigh, NC 27606	



LEFT DITCH -----

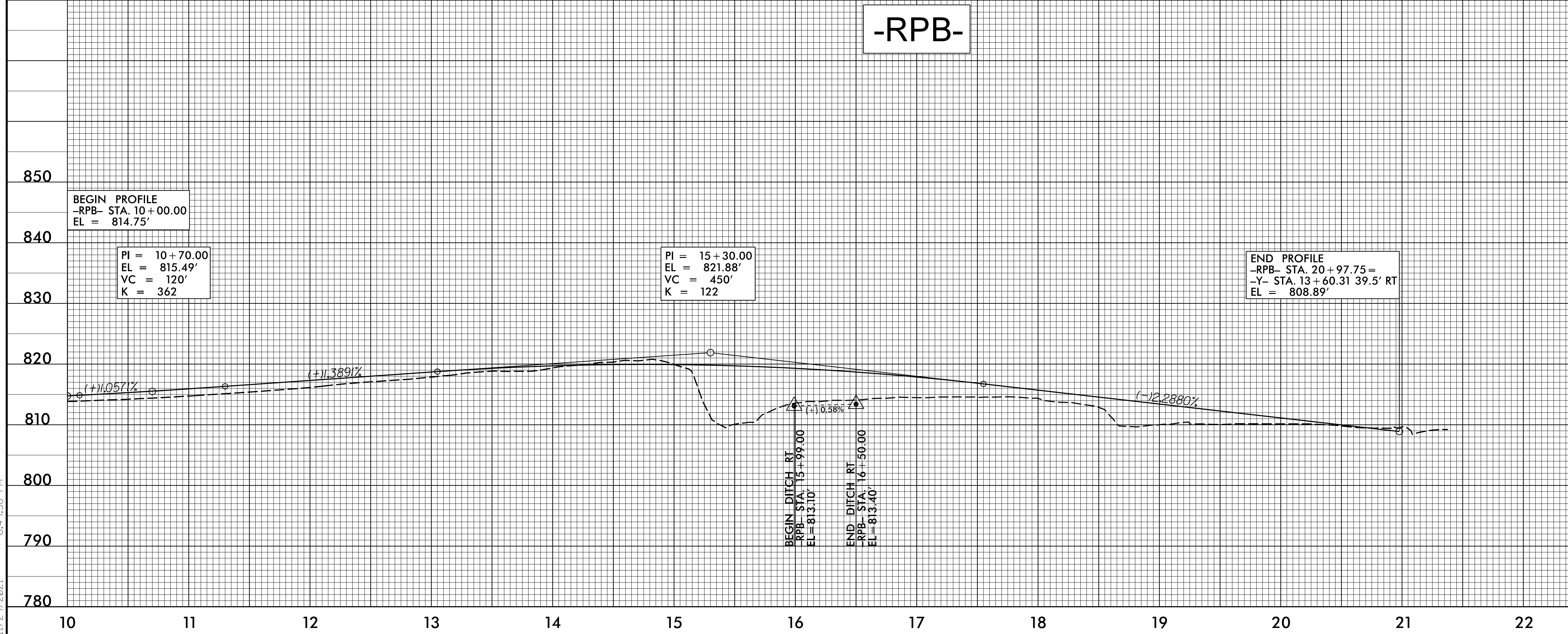
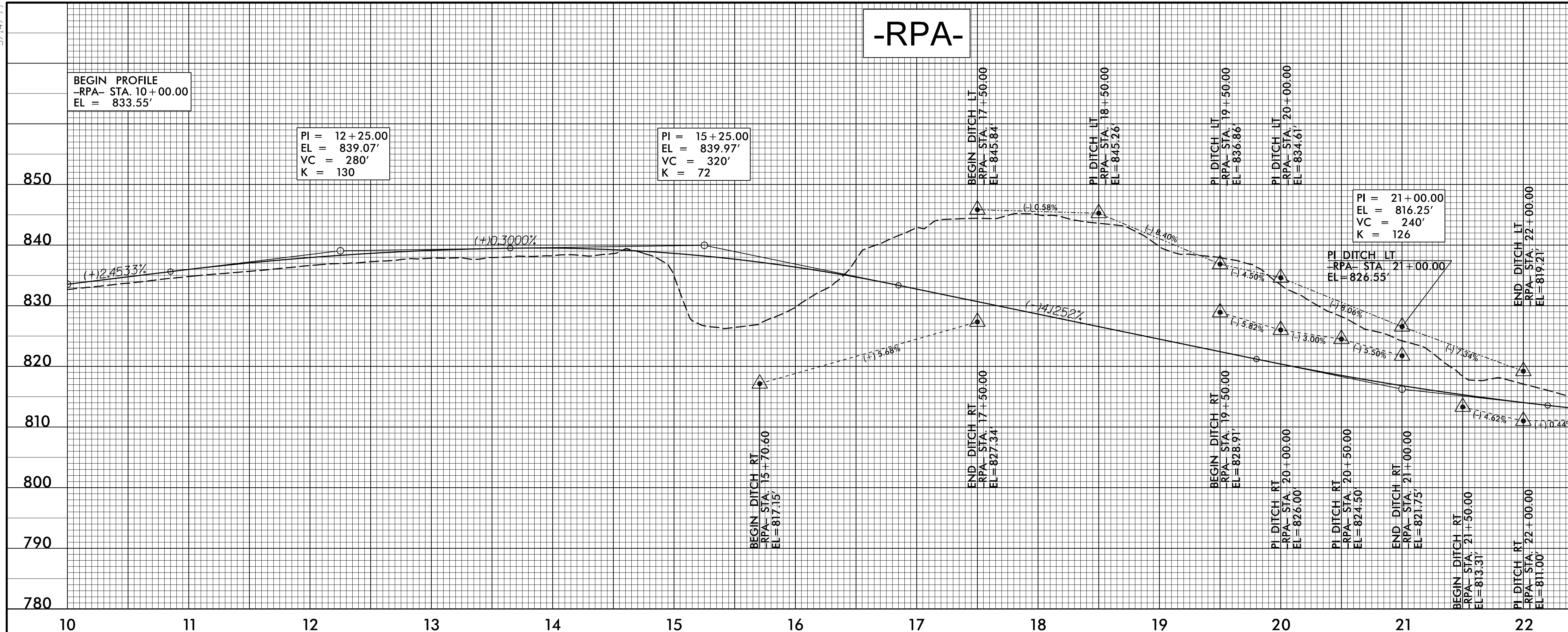
RIGHT DITCH -----

-Y- PLAN SEE SHEETS 5 & 7

JOR66165  
R:\Roadway\Pro\U-5896\_rdl\ef1\_psh.dgn  
11/29/2021 6:49:37 PM

5/14/99

PROJECT REFERENCE NO. <b>U-5896</b>	SHEET NO. <b>11</b>
ROADWAY DESIGN ENGINEER <b>NORTH CAROLINA PROFESSIONAL SEAL 21102</b> JAMES TIMOTHY JORDAN	HYDRAULICS ENGINEER <b>NORTH CAROLINA PROFESSIONAL SEAL 043870</b> JAMES TIMOTHY JORDAN
MOTT MACDONALD I & E, LLC LICENSE NO. P-0669	
VHB ENGINEERING LICENSE NO. C-3705	
<b>DOCUMENT NOT CONSIDERED FINAL</b> <b>UNLESS ALL SIGNATURES COMPLETED</b>	
Prepared in the Office of: <b>M</b> MOTT MACDONALD 7621 Purfoy Road, Suite 115 Fayetteville, NC 27226 www.mottmac.com/america	
<b>vhb</b> VHB Engineering N.C., P.C. (C-3705) 940 Main Campus Drive, Suite 500 Raleigh, NC 27606	



LEFT DITCH - - - - -  
 RIGHT DITCH - - - - -

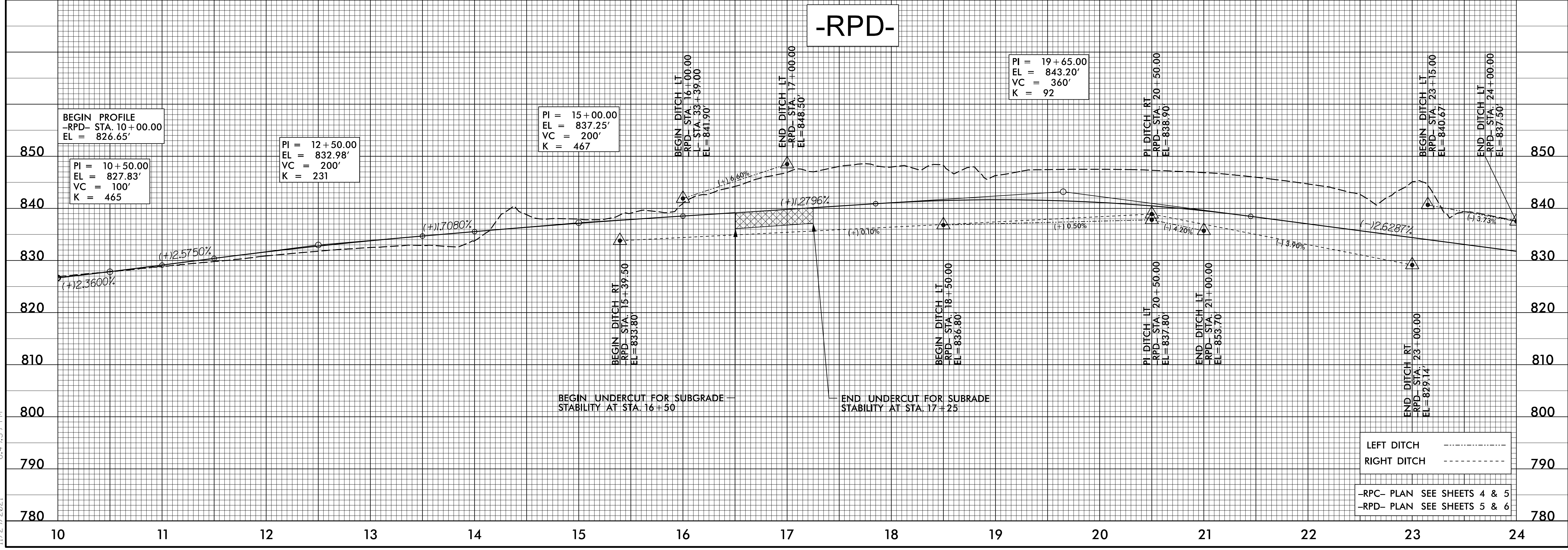
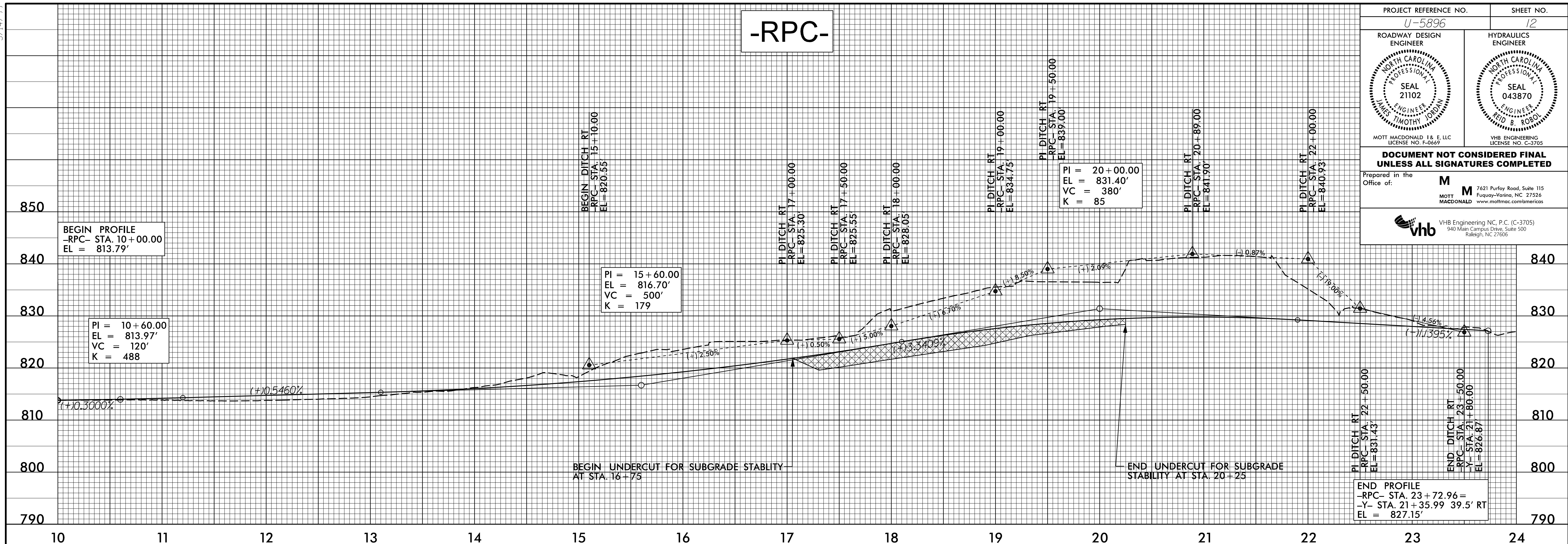
-RPA- PLAN SEE SHEETS 5 & 6  
 -RPB- PLAN SEE SHEETS 4 & 5

JOR66165  
 R:\Roadway\Projects\U-5896\_r-dj\of1\_psh.dgn  
 6:49:38 PM  
 11/29/2021



5/14/99

PROJECT REFERENCE NO. <b>U-5896</b>	SHEET NO. <b>12</b>
ROADWAY DESIGN ENGINEER NORTH CAROLINA PROFESSIONAL SEAL 21102 JAMES TIMOTHY JORDAN	HYDRAULICS ENGINEER NORTH CAROLINA PROFESSIONAL SEAL 043870 JAMES TIMOTHY JORDAN
MOTT MACDONALD I & E, LLC LICENSE NO. P-0669	
VHB ENGINEERING LICENSE NO. C-3705	
<b>DOCUMENT NOT CONSIDERED FINAL UNLESS ALL SIGNATURES COMPLETED</b>	
Prepared in the Office of:	<b>M</b> MOTT MACDONALD 7621 Purfoy Road, Suite 115 Fuquay-Varina, NC 27526 www.mottmac.com/americas
<b>vhb</b> VHB Engineering N.C., P.C. (C-3705) 940 Main Campus Drive, Suite 500 Raleigh, NC 27605	



JOR66165  
R:\Roadway\p\ro\j\U-5896\_r\d\ef1\_psh.dgn  
11/29/2021 6:49:39 PM

5/14/99


-RPD-

850  
840  
830  
820  
810  
800  
790

24 25 26

END PROFILE  
-RPD- STA. 25+75.57=  
-Y- STA. 21+43.93 39.5' LT  
EL = 827.15'

1-12.6281%

PROJECT REFERENCE NO. U-5896	SHEET NO. 13
ROADWAY DESIGN ENGINEER NORTH CAROLINA PROFESSIONAL SEAL 21102 JAMES TIMOTHY JORDAN MOTT MACDONALD I & E, LLC LICENSE NO. P-0669	HYDRAULICS ENGINEER NORTH CAROLINA PROFESSIONAL SEAL 043870 JAMES TIMOTHY JORDAN VHB ENGINEERING LICENSE NO. C-3705
<b>DOCUMENT NOT CONSIDERED FINAL UNLESS ALL SIGNATURES COMPLETED</b>	
Prepared in the Office of:	<b>M</b> MOTT MACDONALD 7621 Purfoy Road, Suite 115 Fuquay-Varina, NC 27526 www.mottmac.com/america
 VHB Engineering NC, P.C. (C-3705) 940 Main Campus Drive, Suite 500 Raleigh, NC 27606	

840  
830  
820  
810  
800  
790

-Y1-

850  
840  
830  
820  
810  
800

10 11 12 13 14 15

BEGIN GRADE  
STA. 13+90.00  
EL = 840.01'

END GRADE  
-Y1- STA. 15+20.54=  
-Y- STA. 24+56.29 31.70' RT  
EL = 837.67'

BEGIN DITCH RT  
-Y1- STA. 13+90.00  
EL = 839.41'

END DITCH RT  
-Y1- STA. 14+68.00  
-Y- STA. 25+10.00  
EL = 835.94'

1-11.7926%

1-4.45%

LEFT DITCH - - - - -  
RIGHT DITCH - - - - -

-RPD- PLAN SEE SHEETS 5 & 6  
-Y1- PLAN SEE SHEETS 5 & 7

JOR66165  
R:\Roadway\Pro\U-5896\_r\dj\_1\_psh.dgn  
11/29/2021 6:49:39 PM