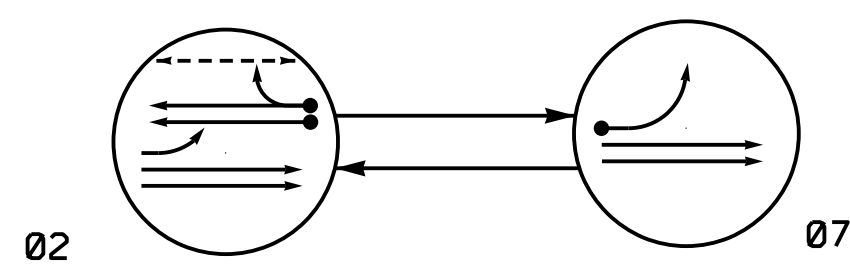


PHASING DIAGRAM



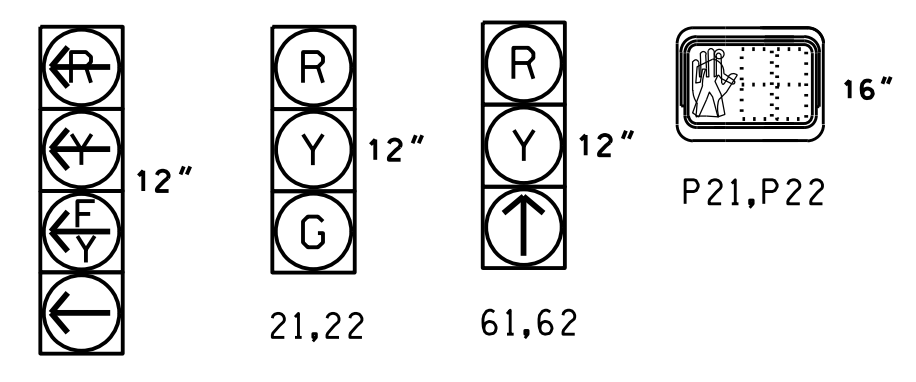
PHASING DIAGRAM DETECTION LEGEND

- ● DETECTED MOVEMENT
- ○ UNDETECTED MOVEMENT (OVERLAP)
- ○ UNSIGNALIZED MOVEMENT
- ○ PEDESTRIAN MOVEMENT

TABLE OF OPERATION

SIGNAL FACE	PHASE		
	02	07	FLASH
11	F	Y	Y
21,22	G	R	Y
61,62	↑	↑	Y
P21,P22	W	DW	DRK

SIGNAL FACE I.D.
All Heads L.E.D.



ASC/3 DETECTOR INSTALLATION CHART

DETECTOR		PROGRAMMING										
ZONE	SIZE (FT)	DISTANCE FROM STOPBAR (FT)	TURNS	NEW LOOP	PHASE	CALLING	EXTEND TIME	DELAY TIME	USE ADDED INITIAL	TYPE	SYSTEM LOOP	NEW CARD
2A*	6X6	70	*	*	2	Yes	-	-	-	S	-	*
2B*	6X6	70	*	*	2	Yes	-	-	-	S	-	*
7A*	6X40	0	*	*	7	Yes	-	15	-	S	-	*

* Video Detection

2 Phase Fully Actuated (High Point Signal System)

NOTES

- Refer to "Roadway Standard Drawings NCDOT" dated January 2018 and "Standard Specifications for Roads and Structures" dated January 2018.
- Do not program signal for late night flashing operation unless otherwise directed by the Engineer.
- Set all detector units to presence mode.
- Locate new cabinet so as not to obstruct sight distance of vehicles turning right on red.
- Omit "WALK" and flashing "DON'T WALK" with no pedestrian calls.
- Program pedestrian heads to countdown the flashing "Don't Walk" time only.
- This intersection uses video detection. install according to manufacturer's instructions to achieve the desired detection.
- Maximum times shown in timing chart are for free-run operation only. Coordinated signal system timing values supersede these values.
- All metal poles, mastarms, and pedestrian pedestals shall be black power coated and fluted design approved by City of High Point. Refer to the Project Special Provisions for details.

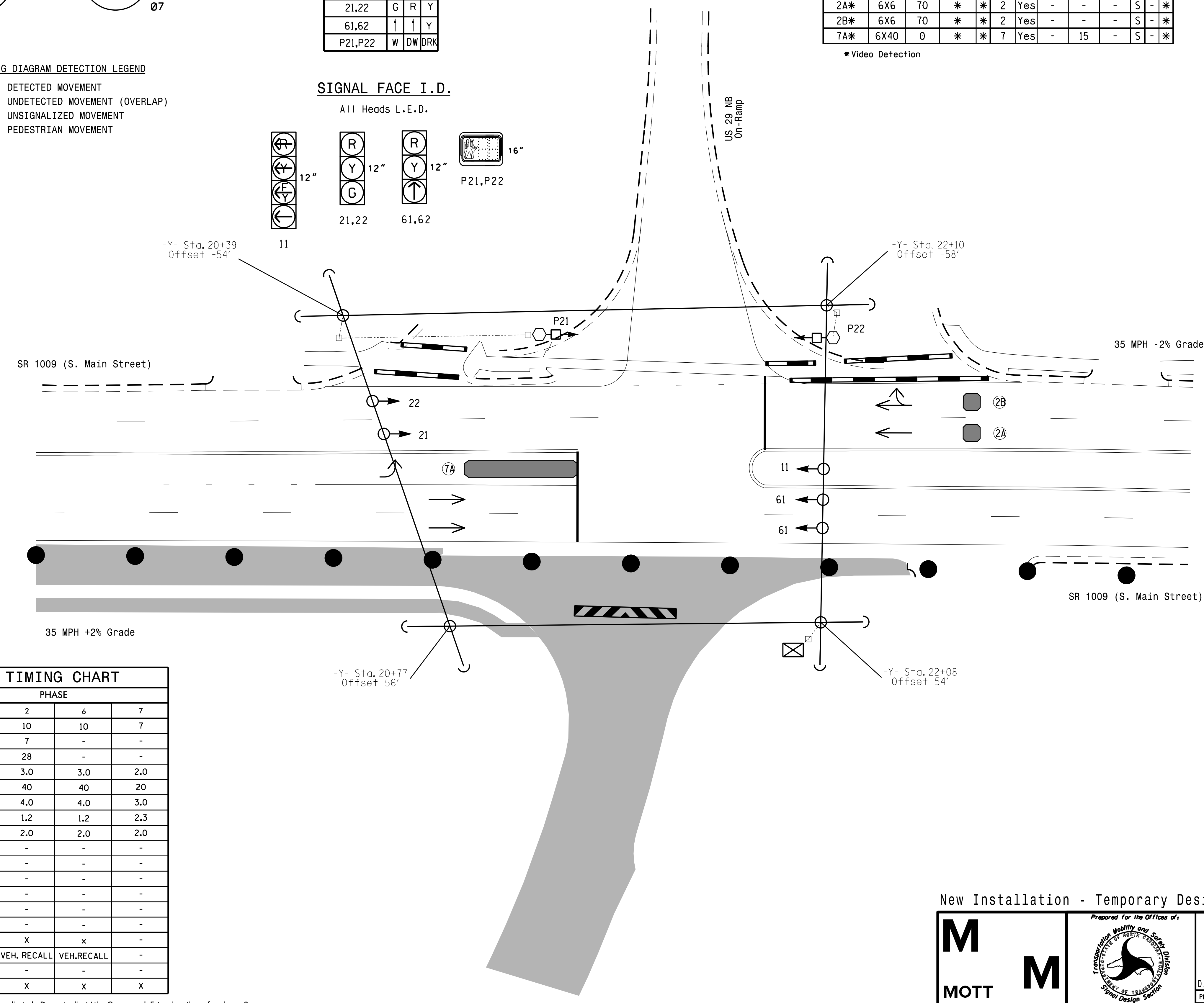
LEGEND

- | PROPOSED | EXISTING |
|--|-----------------------------|
| ○ → Traffic Signal Head | ● → N/A |
| ● → Modified Signal Head | ○ → Sign |
| □ → Pedestrian Signal Head With Push Button & Sign | □ → Signal Pole with Guy |
| □ → Signal Pole with Sidewalk Guy | ○ → Inductive Loop Detector |
| □ → Junction Box | □ → Controller & Cabinet |
| ○ → 2-in Underground Conduit | ○ → Right of Way |
| N/A → Directional Arrow | → → Video Detection Zone |
| → → Construction Zone | → → Construction Zone Drums |
| ○ → Portable Concrete Barrier | ○ → Type III Barricade |
| ○ → Type II Signal Pedestal | ○ → Type II Signal Pedestal |

ASC/3 TIMING CHART

FEATURE	PHASE		
	2	6	7
Min Green *	10	10	7
Walk *	7	-	-
Ped Clear	28	-	-
Veh. Extension *	3.0	3.0	2.0
Max I *	40	40	20
Yellow	4.0	4.0	3.0
Red Clear	1.2	1.2	2.3
Red Revert	2.0	2.0	2.0
Actuations B4 Add *	-	-	-
Seconds /Actuation *	-	-	-
Max Initial *	-	-	-
Time Before Reduction *	-	-	-
Time To Reduce *	-	-	-
Minimum Gap	-	-	-
Locking Detector	X	X	-
Recall Position	VEH.RECALL	VEH.RECALL	-
Dual Entry	-	-	-
Simultaneous Gap	X	X	X

* These values may be field adjusted. Do not adjust Min Green and Extension times for phase 2 lower than what is shown. Min Green for all other phases should not be lower than 4 seconds.



New Installation - Temporary Design 1 (TMP Phase IIA)

DOCUMENT NOT CONSIDERED FINAL UNLESS ALL SIGNATURES COMPLETED

SR 1009 (S. Main Street) at US 29 NB Ramps	
Division 7	Guilford County High Point
PLAN DATE: May 2021	REVIEWED BY: RW Thompson
PREPARED BY: DE Fowler	REVIEWED BY:
REVISIONS	INIT. DATE
SIGNATURE: <i>Brendan Lehar</i> DATE: _____	

SIG. INVENTORY NO. 07-1586 11