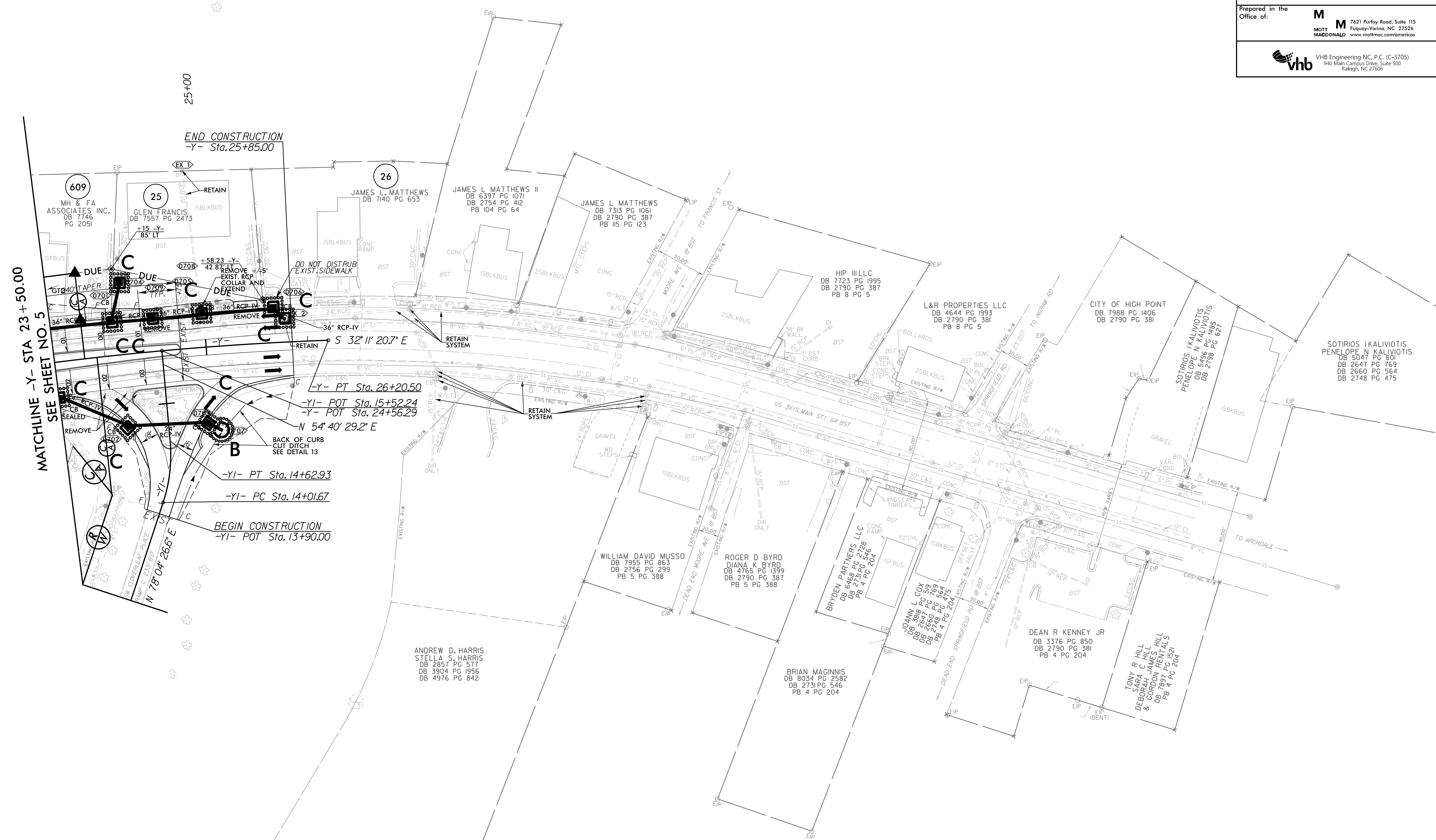


INSTALL FABRIC INSERT INLET PROTECTION DEVICE IN LIEU OF ROCK INLET SEDIMENT TRAP TYPE 'C' AS DIRECTED TO AVOID PONDING OF RUNOFF IN ROADWAY OPEN TO PUBLIC TRAFFIC

| -Y- | | | -YI- | | |
|------------------------------|-----------------------------|------------------------------|-------------------------------|--|--|
| PI Sta 12+02.53 | PI Sta 17+30.99 | PI Sta 24+71.21 | PI Sta 14+32.74 | | |
| $\Delta = 6' 2" 07.05" (RT)$ | $\Delta = 0' 4" 25.5" (LT)$ | $\Delta = 5' 42' 24.6" (RT)$ | $\Delta = 23' 23' 57.3" (LT)$ | | |
| $D = 1' 34' 11.09"$ | $D = 0' 34' 22.6"$ | $D = 1' 54' 35.5"$ | $D = 38' 11' 49.9"$ | | |
| $L = 404.65'$ | $L = 120.50'$ | $L = 298.81'$ | $L = 61.26'$ | | |
| $T = 202.53'$ | $T = 60.25'$ | $T = 149.53'$ | $T = 31.06'$ | | |
| $R = 3,650.00'$ | $R = 10,000.00'$ | $R = 3,000.00'$ | $R = 150.00'$ | | |
| $SE = RC$ | $SE = NC$ | $SE = NC$ | $SE = NC$ | | |
| $RO = 74'$ | $RO = SEE PLANS$ | $RO = SEE PLANS$ | $RO = SEE PLANS$ | | |

NAD 83/2011

| | |
|-------------------------------|--|
| PROJECT REFERENCE NO. | SHEET NO. |
| U-5896 | EC-12/CONST.07 |
| RW SHEET NO. | |
| Prepared in the Office of: | |
| M MOTT MAGDONALD | 7621 Purfoy Road, Suite 115 Fuquay-Varina, NC 27526 www.mottmac.com/americas |
| vhb | VHB Engineering NC, P.C. (C-3705) 940 Main Campus Drive, Suite 500 Raleigh, NC 27608 |



12/31/2021 8:45:55 AM R:\Environmental\Design\FSHU-5896.REU_psh07_FINAL.dgn