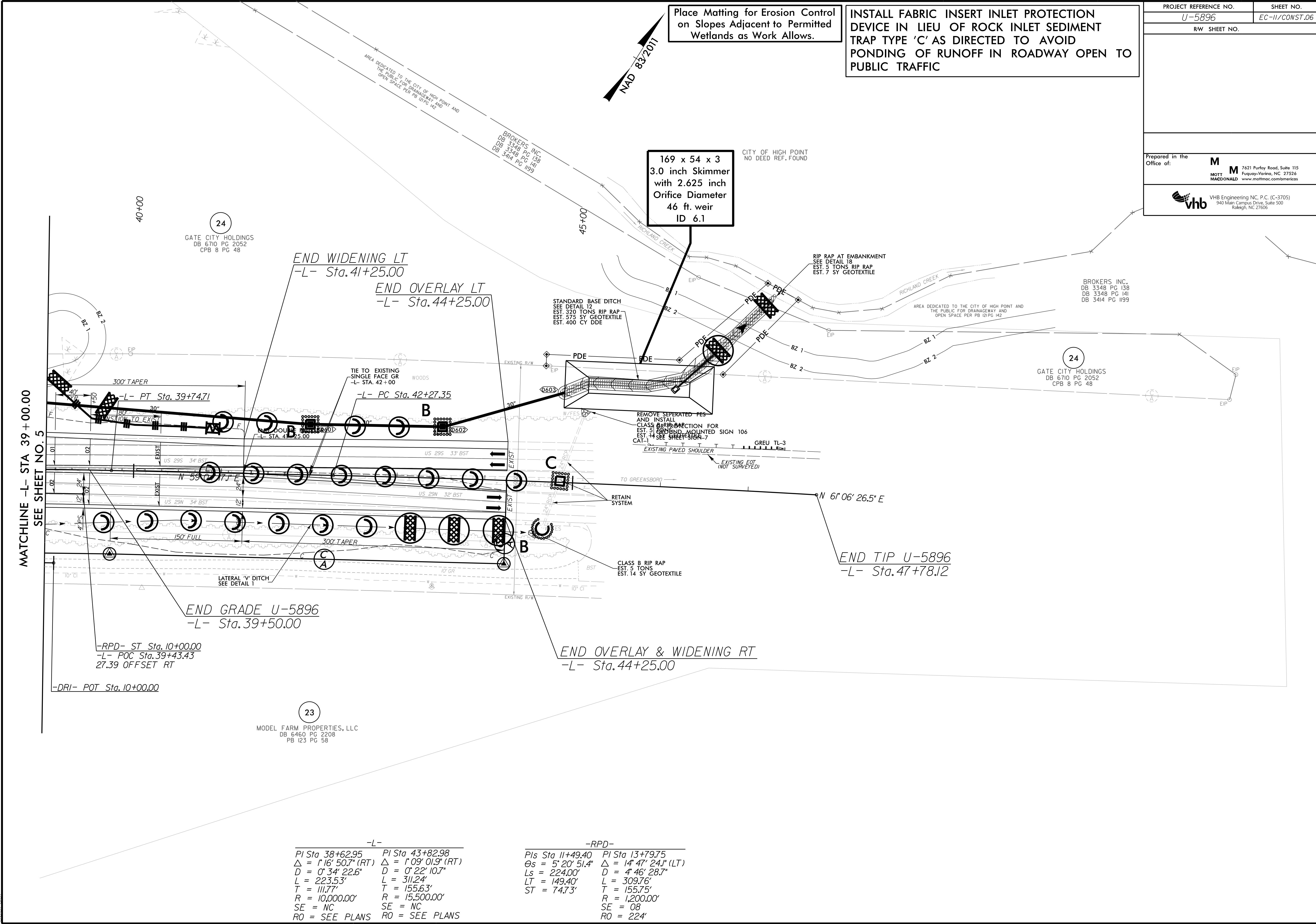


Place Matting for Erosion Control on Slopes Adjacent to Permitted Wetlands as Work Allows.

INSTALL FABRIC INSERT INLET PROTECTION DEVICE IN LIEU OF ROCK INLET SEDIMENT TRAP TYPE 'C' AS DIRECTED TO AVOID PONDING OF RUNOFF IN ROADWAY OPEN TO PUBLIC TRAFFIC

169 x 54 x 3  
3.0 inch Skimmer  
with 2.625 inch  
Orifice Diameter  
46 ft. weir  
ID 6.1



MATCHLINE -L- STA 39+00.00  
SEE SHEET NO. 5

END WIDENING LT  
-L- Sta. 41+25.00  
END OVERLAY LT  
-L- Sta. 44+25.00

END GRADE U-5896  
-L- Sta. 39+50.00

END OVERLAY & WIDENING RT  
-L- Sta. 44+25.00

END TIP U-5896  
-L- Sta. 47+78.12

-L-	
PI Sta 38+62.95	PI Sta 43+82.98
$\Delta = 1' 16' 50.7''$ (RT)	$\Delta = 1' 09' 01.9''$ (RT)
$D = 0' 34' 22.6''$	$D = 0' 22' 10.7''$
$L = 223.53'$	$L = 311.24'$
$T = 111.77'$	$T = 155.63'$
$R = 10,000.00'$	$R = 15,500.00'$
SE = NC	SE = NC
RO = SEE PLANS	RO = SEE PLANS

-RPD-	
PIs Sta 11+49.40	PI Sta 13+79.75
$\Theta_s = 5' 20' 51.4''$	$\Delta = 14' 47' 24.1''$ (LT)
$L_s = 224.00'$	$D = 4' 46' 28.7''$
$LT = 149.40'$	$L = 309.76'$
$ST = 74.73'$	$T = 155.75'$
	$R = 1,200.00'$
	SE = 08
	RO = 224'

8/17/99  
 12/3/2021 8:40:56 AM  
 R:\Environmental\Design\PSHU-U-5896.REU\_psh06\_FINAL.dgn  
 shen