

INSTALL FABRIC INSERT PROTECTION DEVICE IN LIEU OF ROCK INLET SEDIMENT TRAP TYPE 'C' AS DIRECTED TO AVOID PONDING OF RUNOFF IN ROADWAY OPEN TO PUBLIC TRAFFIC

Place Matting for Erosion Control on Slope as Work Allows.
Sta. 10+50 LT to Sta. 13+50 LT -L-
Sta. 19+50 LT to Sta. 22+75 LT -L-
Sta. 20+50 RT to Sta. 22+90 RT -L-
Sta. 24+35 LT to Sta. 27+00 LT -L-
Sta. 24+50 RT to Sta. 26+00 RT -L-

Place Matting for Erosion Control on Slopes Adjacent to Permitted Wetlands as Work Allows.

104 x 52 x 3
2.0 inch Skimmer
with 2.0 inch
Orifice Diameter
41 ft. weir
ID 5.3

100 x 50 x 3
2.0 inch Skimmer
with 2.0 inch
Orifice Diameter
42 ft. weir
ID 5.6

51 x 15 x 3
1.5 inch Skimmer
with 1.25 inch
Orifice Diameter
18 ft. weir
ID 5.4

67 x 33 x 3
1.5 inch Skimmer
with 1.25 inch
Orifice Diameter
17 ft. weir
ID 5.5

70 x 34 x 3
1.5 inch Skimmer
with 1.375 inch
Orifice Diameter
18 ft. weir
ID 5.9

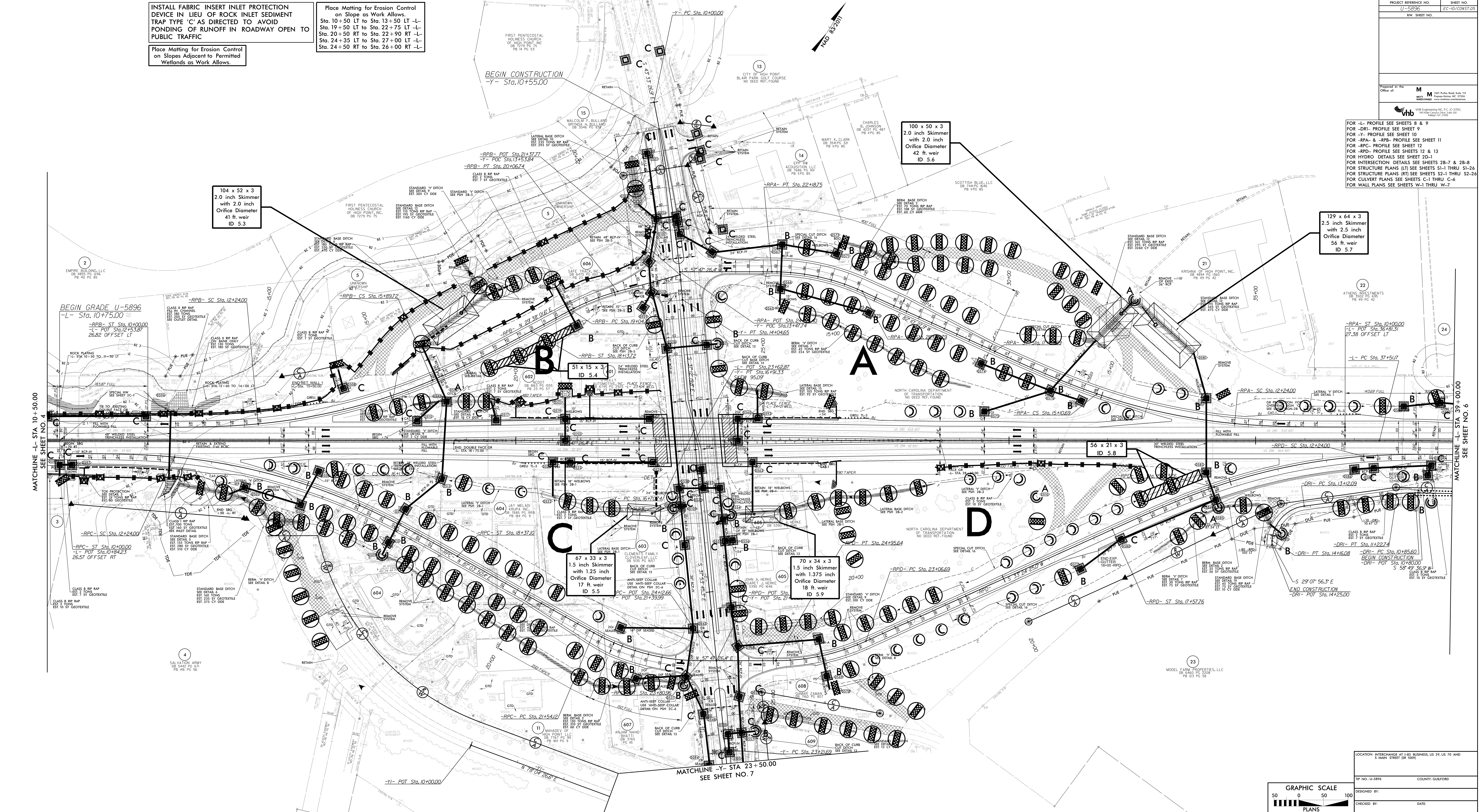
129 x 64 x 3
2.5 inch Skimmer
with 2.5 inch
Orifice Diameter
56 ft. weir
ID 5.7

56 x 21 x 3
ID 5.8

PROJECT REFERENCE NO. U-5896 SHEET NO. EC-10/CONST-05
REV SHEET NO.

Prepared in the Office of: M M 221 Potts Road, Suite 110, Matthews, NC 27643
VHB Engineering Inc. P.C. (C-2002) 301 W. Campbell Street, Suite 100, Raleigh, NC 27606

FOR -L- PROFILE SEE SHEETS 8 & 9
FOR -DR1- PROFILE SEE SHEET 9
FOR -Y- PROFILE SEE SHEET 10
FOR -RPA- & -RPB- PROFILE SEE SHEET 11
FOR -RPC- PROFILE SEE SHEET 12
FOR -RPD- PROFILE SEE SHEETS 12 & 13
FOR HYDRO DETAILS SEE SHEET 2D-1
FOR INTERSECTION DETAILS SEE SHEETS 2B-7 & 2B-8
FOR STRUCTURE PLANS (L) SEE SHEETS S1-1 THRU S1-24
FOR STRUCTURE PLANS (R) SEE SHEETS S2-1 THRU S2-24
FOR CULVERT PLANS SEE SHEETS C-1 THRU C-6
FOR WALL PLANS SEE SHEETS W-1 THRU W-7



MATCHLINE -L- STA 10+50.00
SEE SHEET NO. 4

MATCHLINE -Y- STA 23+50.00
SEE SHEET NO. 7

MATCHLINE -L- STA 39+00.00
SEE SHEET NO. 6

GRAPHIC SCALE
50 0 50 100
PLANS

LOCATION: INTERCHANGE AT I-85 BUSINESS US 29 US 70 AND MAIN STREET (R 100)

TIP NO. U-5896 COUNTY: GUILFORD
DESIGNED BY:
CHECKED BY: DATE:

12/27/2021 AM 10:00:00
V:\Projects\U-5896\Drawings\EC-10\CONST-05.dwg
VHB Engineering Inc.