

DETAIL OF TEMPORARY DETOUR FOR -RPB-

INSTALL FABRIC INSERT INLET PROTECTION DEVICE IN LIEU OF ROCK INLET SEDIMENT TRAP TYPE 'C' AS DIRECTED TO AVOID PONDING OF RUNOFF IN ROADWAY OPEN TO PUBLIC TRAFFIC

PROJECT REFERENCE NO.	SHEET NO.
U-5896	EC-BB/CONST.2B-5
RW SHEET NO.	

Prepared in the Office of:

M
MOTT
MAGDONALD

7621 Purfoy Road, Suite 115
Fuquay-Varina, NC 27526
www.mottmac.com/americas

vhb
VHB Engineering NC, P.C. (C-3705)
940 Main Campus Drive, Suite 500
Raleigh, NC 27606

FOR -RPB- DESIGN SEE SHEET 5
FOR HYDRO DETAILS SEE SHEET 2D-1
FOR PHASING SEE TMP PLANS

-DET-RPB-

PI Sta 15+63.41	PI Sta 18+69.73
$\Delta = 108' 15" 08.3" (RT)$	$\Delta = 23' 58" 19.8" (LT)$
$D = 51' 09" 25.0"$	$D = 38' 11" 49.9"$
$L = 211.61'$	$L = 62.76'$
$T = 154.87'$	$T = 31.85'$
$R = 112.00'$	$R = 150.00'$

PI Sta 19+53.93

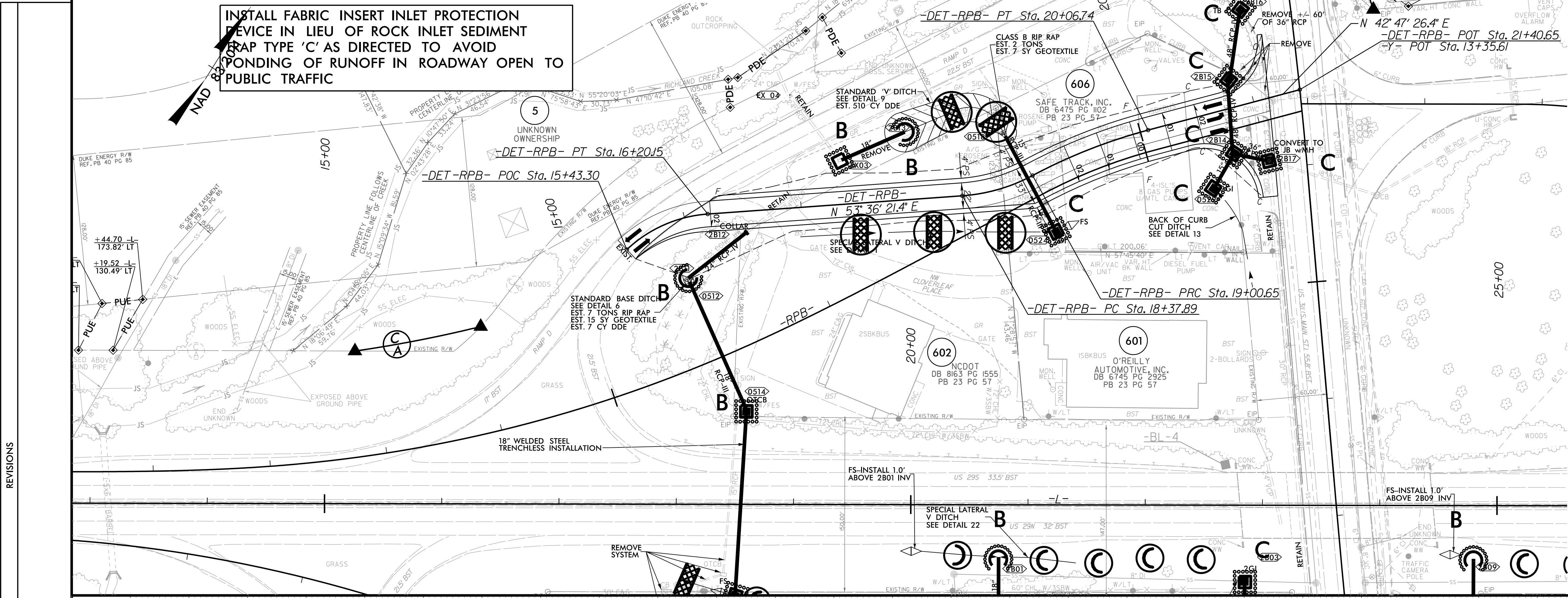
$\Delta = 13' 09" 24.8" (RT)$

$D = 12' 24" 06.1"$

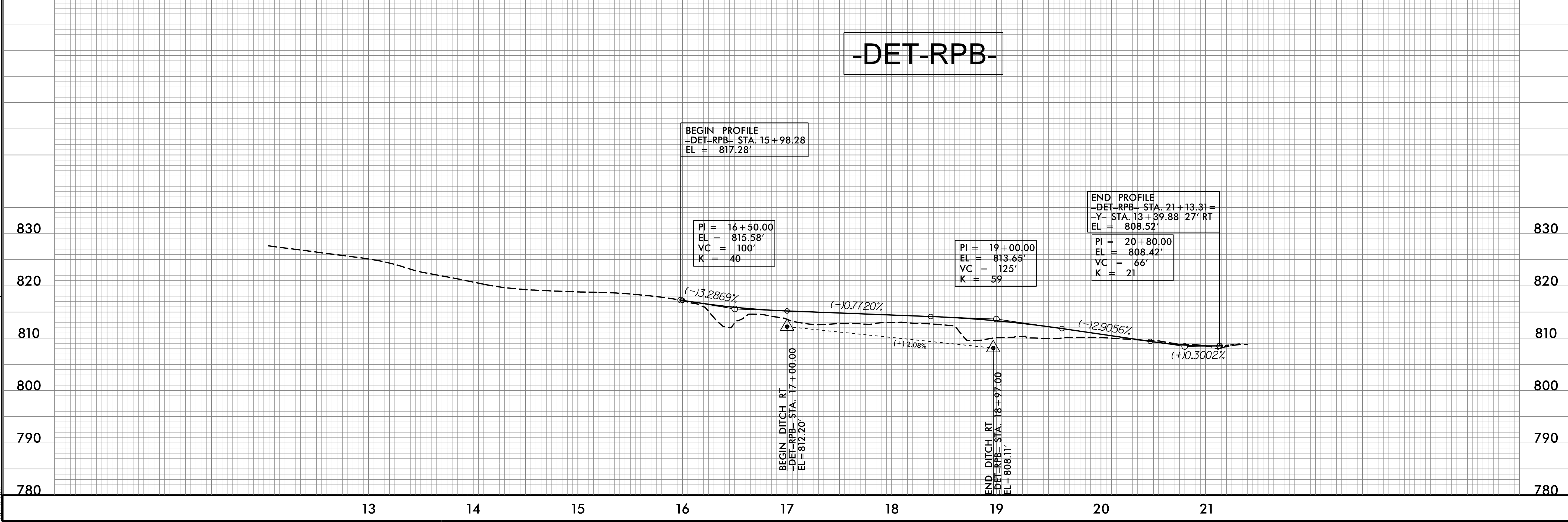
$L = 106.09'$

$T = 53.28'$

$R = 462.00'$



-DET-RPB-



12/3/2021 8:40:33 AM R:\Environmental\Design\PSHU-5896.REU_psh023-5_Detour_-RPB_FINAL.dgn