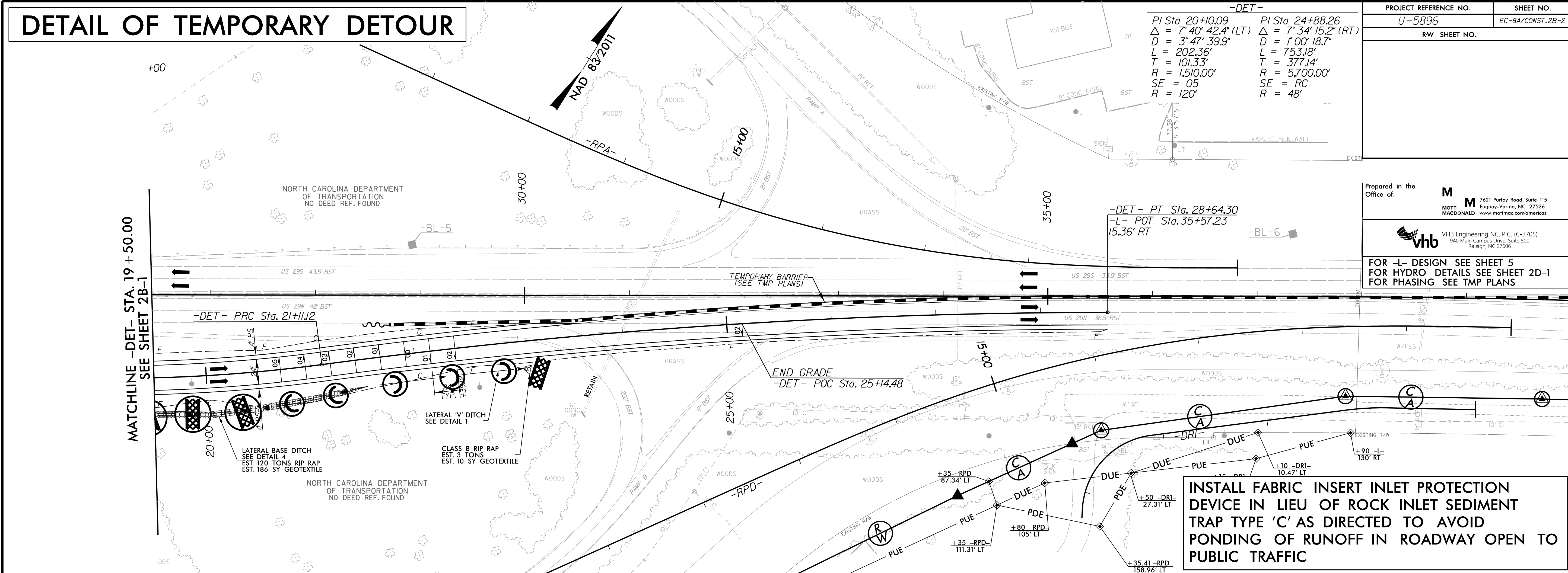


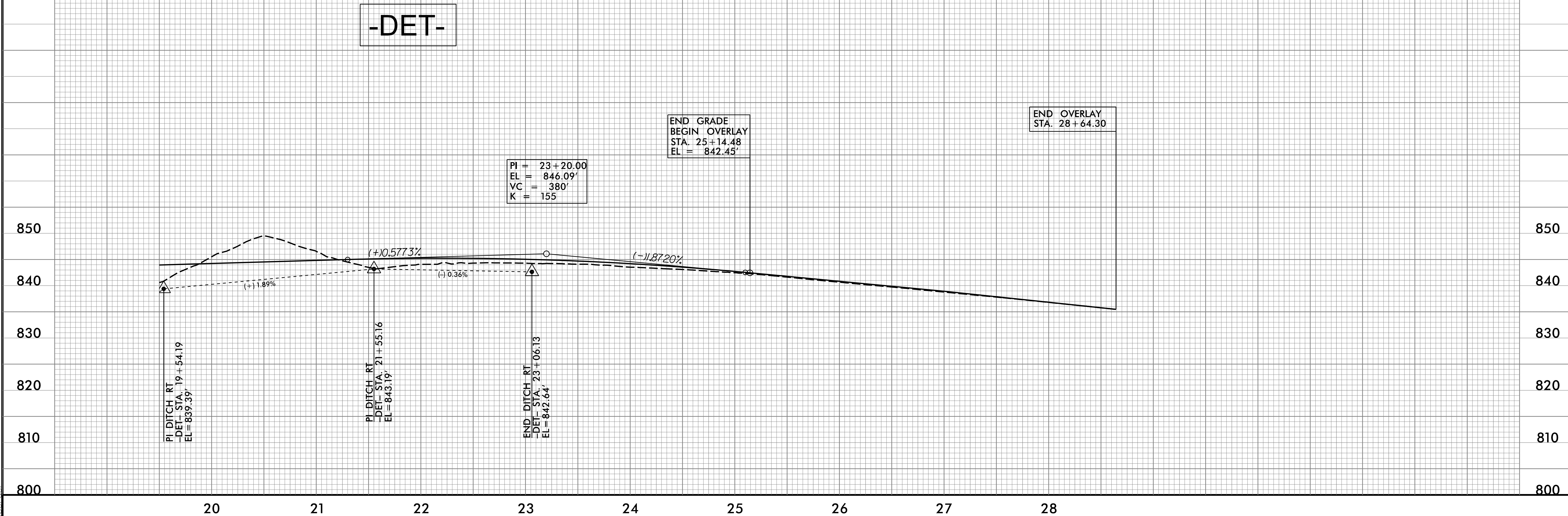
DETAIL OF TEMPORARY DETOUR

PROJECT REFERENCE NO. U-5896	SHEET NO. EC-BA/CONST.2B-2
RW SHEET NO.	
Prepared in the Office of: M MOTT MACDONALD 7621 Purfoy Road, Suite 115 Fuquay-Varina, NC 27526 www.mottmac.com/americas	
vhb VHB Engineering NC, P.C. (C-3705) 940 Main Campus Drive, Suite 500 Raleigh, NC 27606	
FOR -L- DESIGN SEE SHEET 5 FOR HYDRO DETAILS SEE SHEET 2D-1 FOR PHASING SEE TMP PLANS	

-DET-	
PI Sta 20+10.09 $\Delta = 7' 40' 42.4''$ (LT) D = 3' 47' 39.9" L = 202.36' T = 101.33' R = 1,510.00' SE = 05 R = 120'	PI Sta 24+88.26 $\Delta = 7' 34' 15.2''$ (RT) D = 1' 00' 18.7" L = 753.18' T = 377.14' R = 5,700.00' SE = RC R = 48'



INSTALL FABRIC INSERT INLET PROTECTION DEVICE IN LIEU OF ROCK INLET SEDIMENT TRAP TYPE 'C' AS DIRECTED TO AVOID PONDING OF RUNOFF IN ROADWAY OPEN TO PUBLIC TRAFFIC



8/17/99
 12/3/2021 8:39:54 AM
 R:\Environmental\Design\PSHU-5896.REU_psh02B-2_Detour_FINAL.dgn
 abe