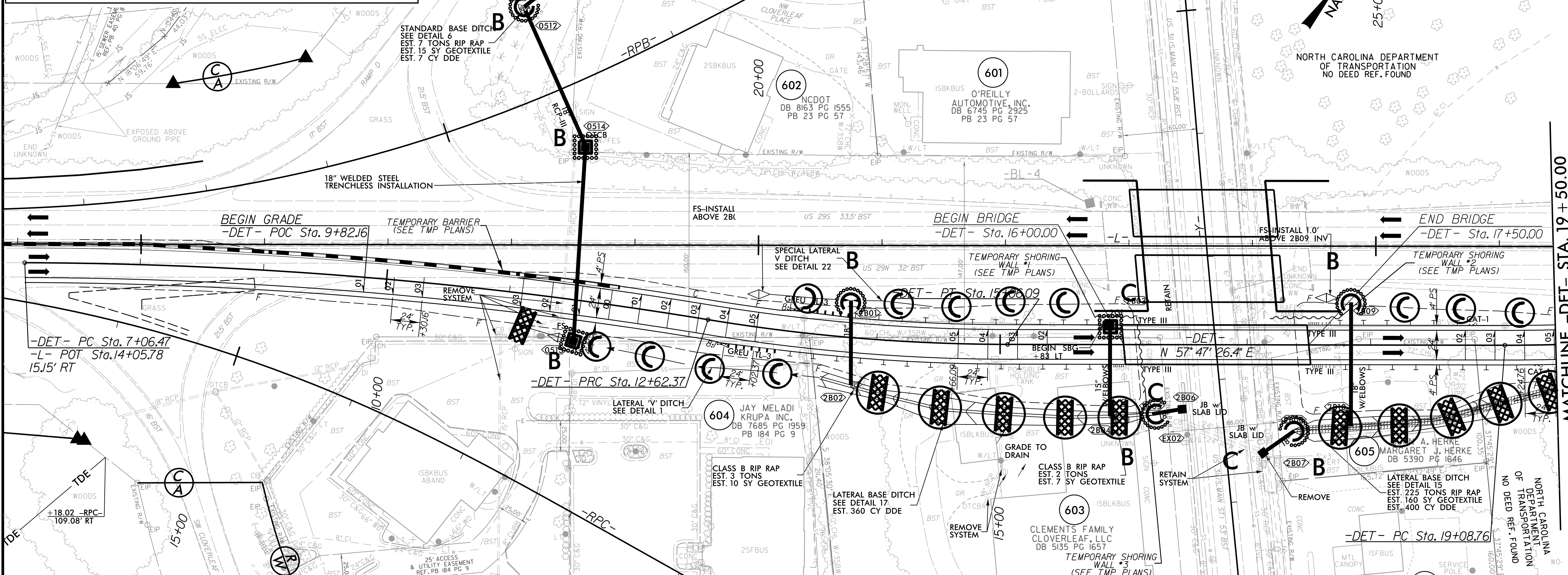


8/17/09

DETAIL OF TEMPORARY DETOUR

INSTALL FABRIC INSERT INLET PROTECTION DEVICE IN LINE OF ROCK INLET SEDIMENT TRAP TYPE 'C' AS DIRECTED TO AVOID PONDING OF RUNOFF IN ROADWAY OPEN TO PUBLIC TRAFFIC



| | |
|-----------------------|------------------|
| PROJECT REFERENCE NO. | SHEET NO. |
| U-5896 | EC-08/CONST.2B-1 |
| RW SHEET NO. | |

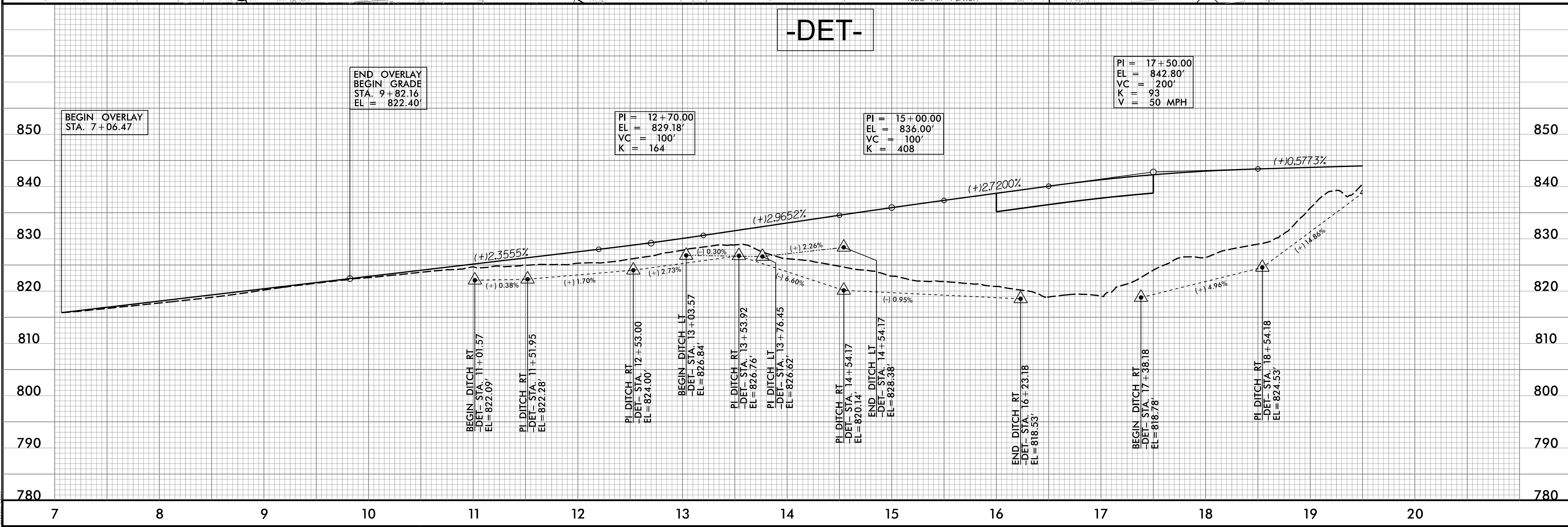
Prepared in the Office of: **M** MOTT MACDONALD
 7621 Purfoy Road, Suite 115
 Fuquay-Varina, NC 27526
 www.mottmac.com/americas

vhb VHB Engineering NC, P.C. (C-3705)
 940 Main Campus Drive, Suite 500
 Raleigh, NC 27606

FOR -L- DESIGN SEE SHEET 5
 FOR HYDRO DETAILS SEE SHEET 2D-1
 FOR PHASING SEE TMP PLANS

| | |
|--|--|
| $PI\ Sta\ 9+85.01$ $\Delta = 9'09''09.2'' (RT)$ $D = 1'38''47.1''$ $L = 555.90'$ $T = 278.54'$ $R = 3,480.00'$ $SE = 03$ $RO = 72'$ | $PI\ Sta\ 13+84.50$ $\Delta = 9'14''51.9'' (LT)$ $D = 3'47''39.9''$ $L = 243.72'$ $T = 122.12'$ $R = 1,510.00'$ $SE = 05$ $RO = 120'$ |
| $PI\ Sta\ 20+10.09$ $\Delta = 7'40''42.4'' (LT)$ $D = 3'47''39.9''$ $L = 202.36'$ $T = 101.33'$ $R = 1,510.00'$ $SE = 05$ $RO = 120'$ | |

TEMP. SHORING (SEE TMP PLANS)



12/3/2021 8:39:57 AM
 R:\Environmental\Design\PSHU-5896_REU_psh02B-1_Detour_FINAL.dgn
 shaber