

CLEARING AND GRUBBING
EROSION CONTROL FOR
CONSTRUCTION SHEET 7

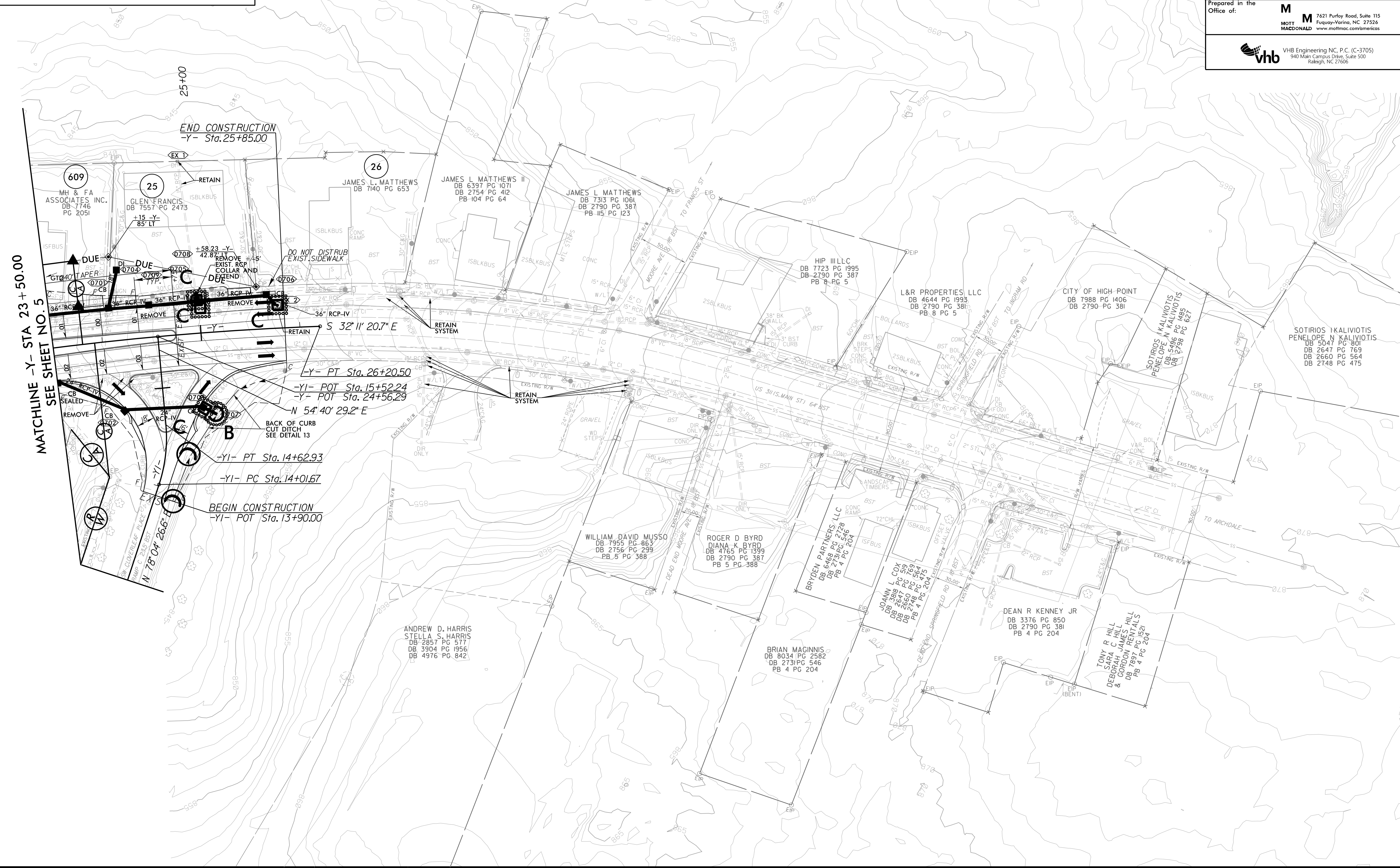
NOTE:
PLACE TEMPORARY ROCK SEDIMENT DAMS TYPE - B
AND TEMPORARY ROCK SILT CHECKS TYPE - A AT
DRAINAGE OUTLETS.

INSTALL FABRIC INSERT INLET PROTECTION
DEVICE IN LIEU OF ROCK INLET SEDIMENT
TRAP TYPE 'C' AS DIRECTED TO AVOID
PONDING OF RUNOFF IN ROADWAY OPEN TO
PUBLIC TRAFFIC

-Y-	-Y-	-Y-	-YI-
PI Sta 12+02.53	PI Sta 17+30.99	PI Sta 24+71.21	PI Sta 14+32.74
$\Delta = 6' 2" 07.05' (RT)$	$\Delta = 0' 4" 25.5' (LT)$	$\Delta = 5' 42' 24.6' (RT)$	$\Delta = 23' 23' 57.3' (LT)$
$D = 1' 34' 11.09"$	$D = 0' 34' 22.6"$	$D = 1' 54' 35.5"$	$D = 38' 11' 49.9"$
$L = 404.65'$	$L = 120.50'$	$L = 298.81'$	$L = 61.26'$
$T = 202.53'$	$T = 60.25'$	$T = 149.53'$	$T = 31.06'$
$R = 3,650.00'$	$R = 10,000.00'$	$R = 3,000.00'$	$R = 150.00'$
$SE = RC$	$SE = NC$	$SE = NC$	$SE = NC$
$RO = 74'$	$RO = SEE PLANS$	$RO = SEE PLANS$	$RO = SEE PLANS$

NAD 83/2011

PROJECT REFERENCE NO. U-5896	SHEET NO. EC-07/CONST.07
RW SHEET NO.	
Prepared in the Office of:	
M MOTT MACDONALD	7621 Purfoy Road, Suite 115 Fuquay-Varina, NC 27526 www.mottmac.com/americas
vhb	VHB Engineering NC, P.C. (C-3705) 940 Main Campus Drive, Suite 500 Raleigh, NC 27608



8/17/99
 12/31/2021 8:39:07 AM
 R:\Environmental\Design\PSHU-5896.REU_psh07_CG.dgn
 shober