

CLEARING AND GRUBBING  
EROSION CONTROL FOR  
CONSTRUCTION SHEET 5

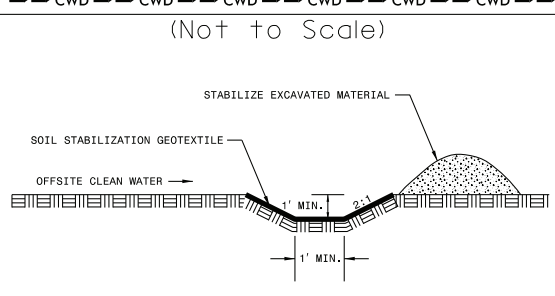
NOTE: PLACE TEMPORARY ROCK SEDIMENT DAMS TYPE - B  
AND TEMPORARY ROCK SILT CHECKS TYPE - A AT  
DRAINAGE OUTLETS.

INSTALL FABRIC INSERT INLET PROTECTION  
DEVICE IN LIEU OF ROCK INLET SEDIMENT  
TRAP TYPE 'C' AS DIRECTED TO AVOID  
PONDING OF RUNOFF IN ROADWAY OPEN TO  
PUBLIC TRAFFIC

INSTALL PIPE(S) IN JURISDICTIONAL AREAS WITHOUT IMPACTING STREAM UNTIL  
AREA STABILIZED AND ACCORDING TO NCDOT BEST MANAGEMENT  
PRACTICES FOR CONSTRUCTION AND MAINTENANCE ACTIVITIES MANUAL.

IMPERVIOUS DIKE MAY BE SUBSTITUTED WITH TURBIDITY CURTAIN  
UPON THE RECOMMENDATION AND COMBINED APPROVAL OF  
THE DIVISION ENVIRONMENTAL OFFICER  
AND NCDWR AND ACOE REPRESENTATIVES.

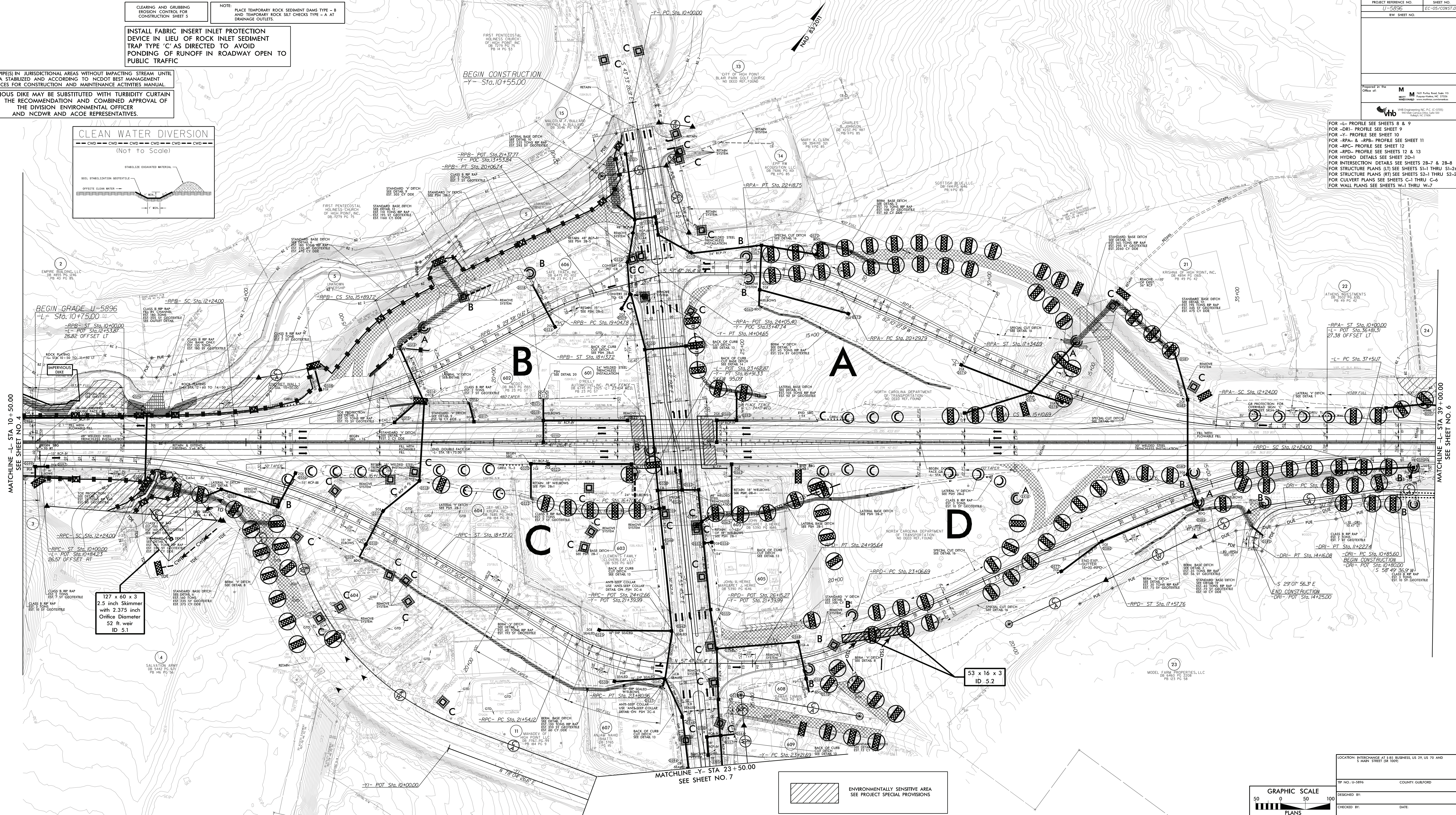
### CLEAN WATER DIVERSION



| PROJECT REFERENCE NO. | SHEET NO.       |
|-----------------------|-----------------|
| U-25936               | EC-05/CONSTR.03 |
| ROW SHEET NO.         |                 |

Prepared at the  
Office of:  
**M**  
VHB Engineering PC, P.C. (C-2096)  
1027 Potts Road, Suite 110  
Fayetteville, NC 27804  
www.vhb.com

FOR -L- PROFILE SEE SHEETS 8 & 9  
FOR -DH- PROFILE SEE SHEET 9  
FOR -Y- PROFILE SEE SHEET 10  
FOR -RPA- -R- PROFILE SEE SHEET 11  
FOR -RPA- -R- PROFILE SEE SHEET 12  
FOR -RPA- -R- PROFILE SEE SHEETS 12 & 13  
FOR -RPA- -R- PROFILE SEE SHEET 20-  
FOR INTERSECTION DETAILS SEE SHEETS 28-7 & 28-8  
FOR STRUCTURE PLANS (L) SEE SHEETS S1-1 THRU S1-26  
FOR CLIVERT PLANS SEE SHEETS C-1 THRU C-6  
FOR WALL PLANS SEE SHEETS W-1 THRU W-7



MATCHLINE -L- STA 10+50.00  
SEE SHEET NO. 4

MATCHLINE -L- STA 37+00.00  
SEE SHEET NO. 6

MATCHLINE -Y- STA 23+50.00  
SEE SHEET NO. 7

12/2/2021  
P:\Projects\2021\U-25936\Drawings\PLAN\U-25936-05.dwg

|  |                |                  |
|--|----------------|------------------|
| LOCATION: INTERCHANGE AT 1.85 BUSINESS US 29 US 70 AND 5 MAIN STREET (R 100) | TP NO. U-25936 | COUNTY: GUILFORD |
| DESIGNED BY:   | CHECKED BY:    | DATE:            |