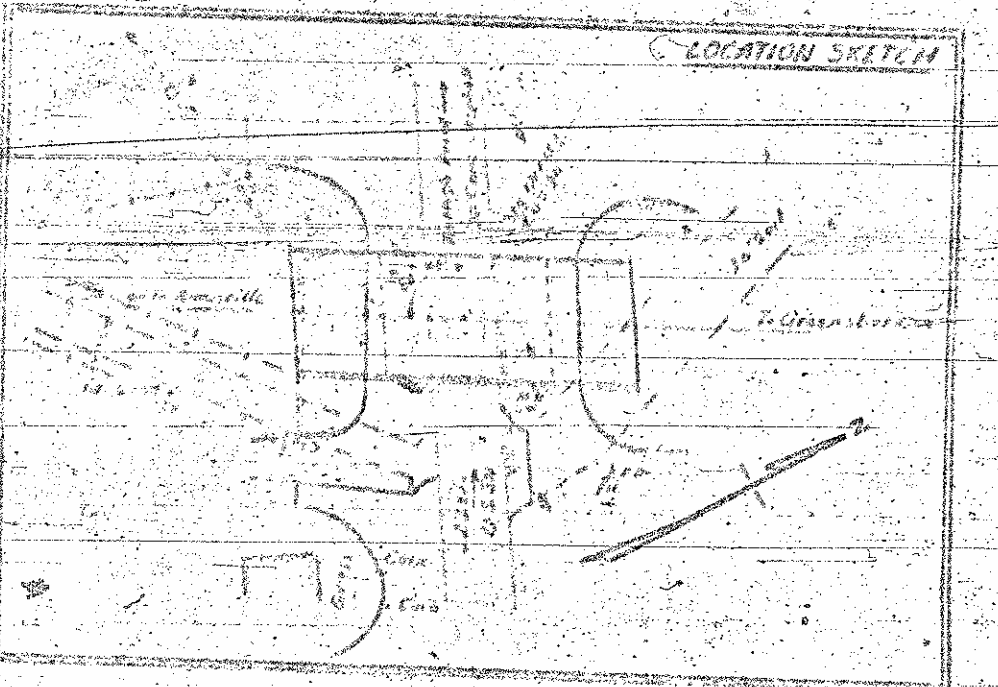
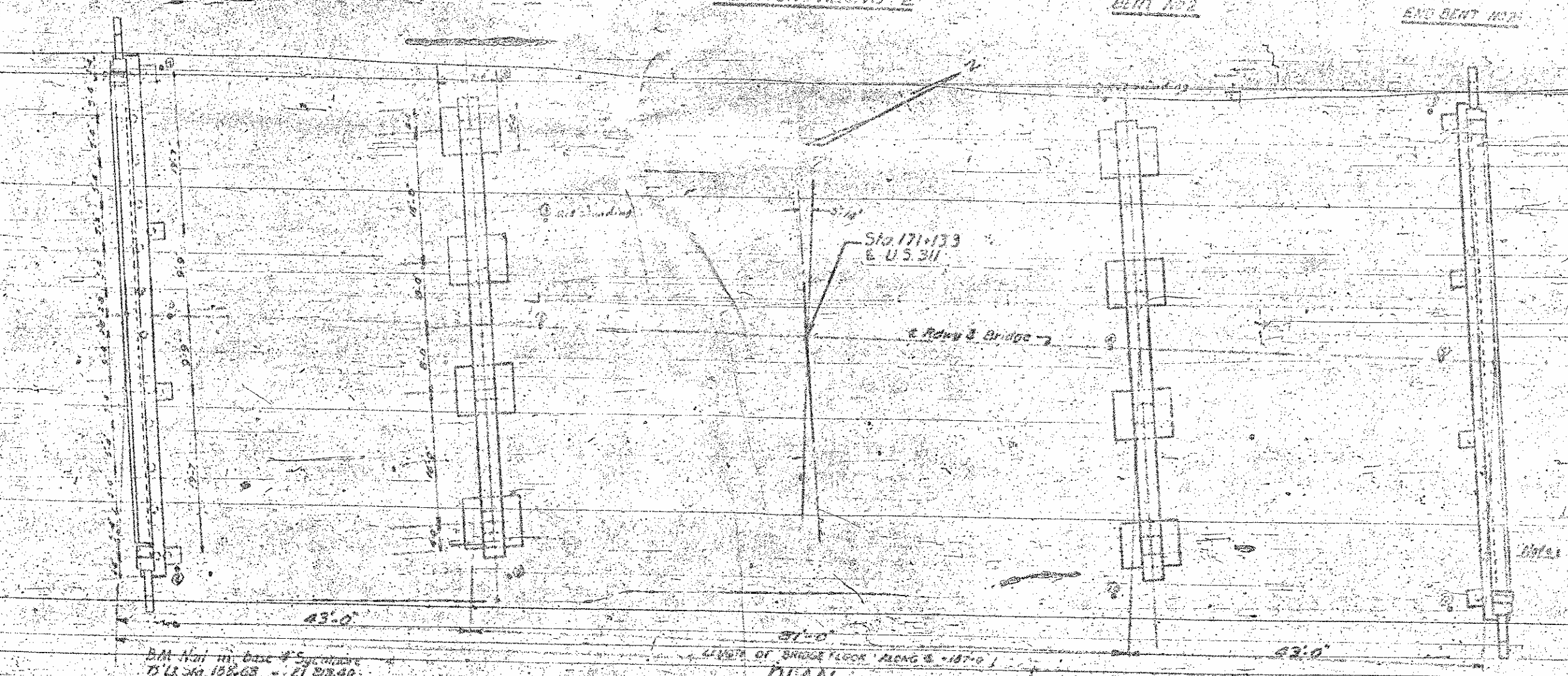


**NOTES**

Assumed Live Load - H20-S16  
 All concrete to be per-entraining. See Section Specifications  
 Computed Foundation Load for all footings 3.0 tons per sq ft  
 See drawings for all details. All steel work to be per AISC  
 All steel work to be galvanized. See Sheet S-11  
 All steel work to be painted. See Sheet S-11  
 All steel work to be galvanized. See Sheet S-11  
 All steel work to be galvanized. See Sheet S-11  
 All steel work to be galvanized. See Sheet S-11

**TOTAL BILL OF MATERIAL**

ITEM	QUANTITY	UNIT	PRICE	TOTAL
CONCRETE	1000.00	CU YD	1.50	1500.00
STEEL	100.00	TONS	100.00	10000.00
WOOD	100.00	CU YD	1.50	150.00
PAINT	100.00	TONS	1.00	100.00
IRON	100.00	TONS	1.00	100.00
BRASS	100.00	TONS	1.00	100.00
LEAD	100.00	TONS	1.00	100.00
ZINC	100.00	TONS	1.00	100.00
GLASS	100.00	TONS	1.00	100.00
ROPE	100.00	TONS	1.00	100.00
WIRE	100.00	TONS	1.00	100.00
SAFETY	100.00	TONS	1.00	100.00
OTHER	100.00	TONS	1.00	100.00
<b>TOTAL</b>				<b>12250.00</b>



The Contractor may at his option  
 substitute existing construction for  
 the proposed construction shown on  
 the plans the same subject to the  
 approval of the Engineer. The  
 Contractor shall be responsible for  
 the safety of the structure and  
 shall be liable for any damage  
 to the property of the State or  
 of any person or corporation.

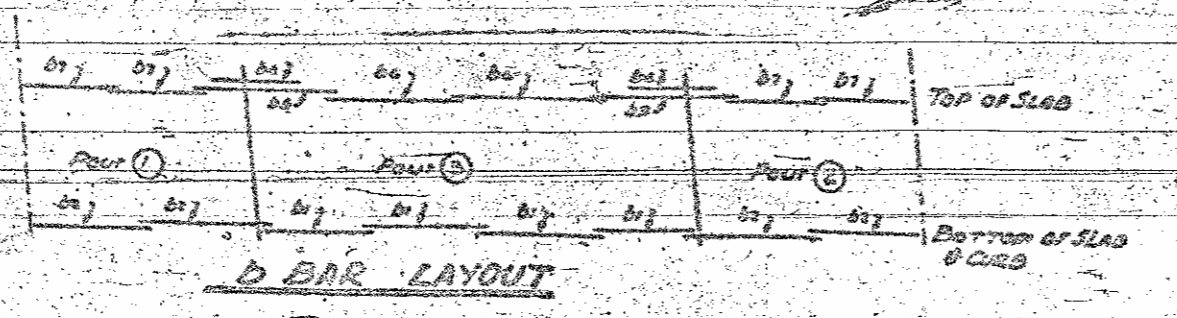
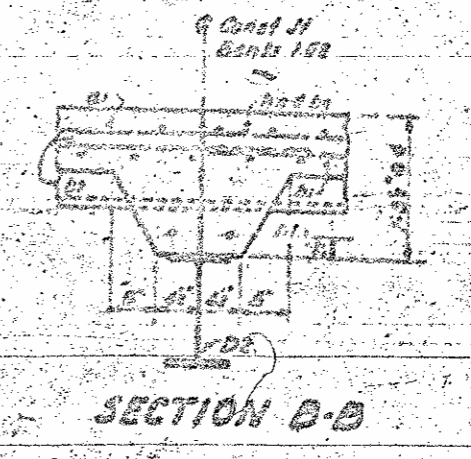
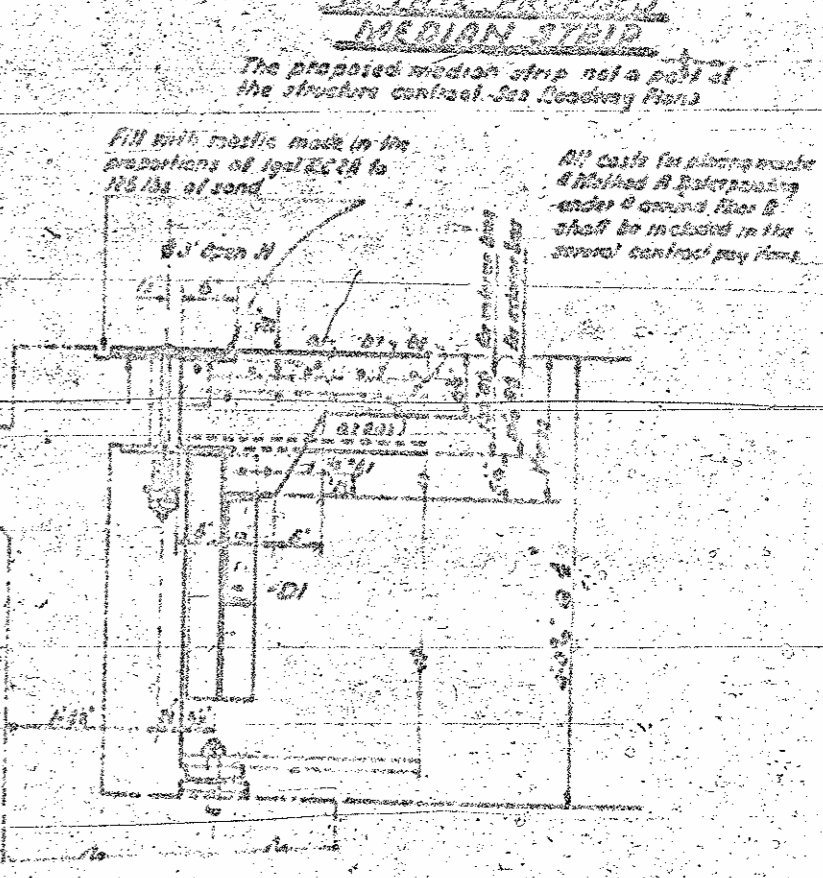
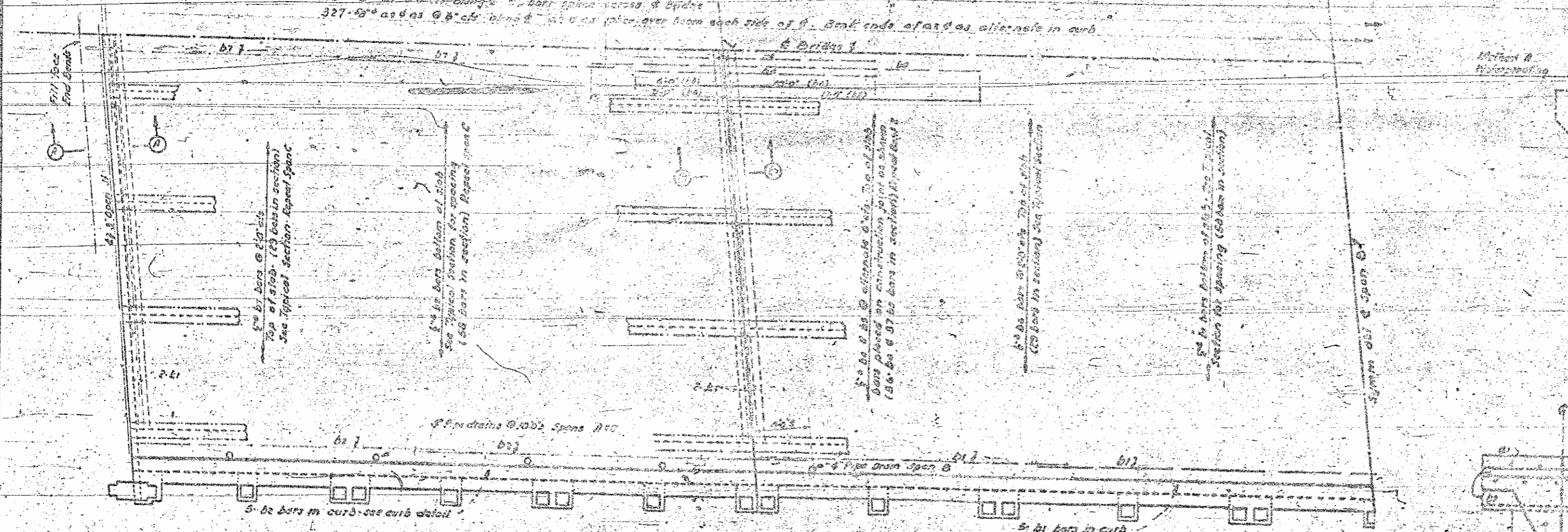
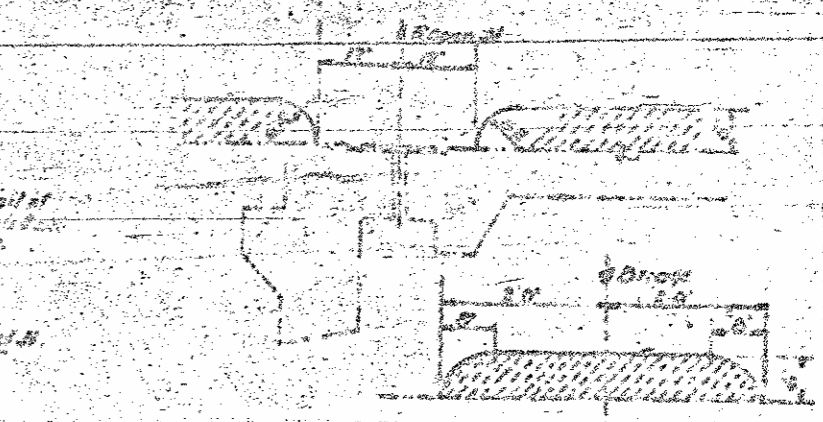
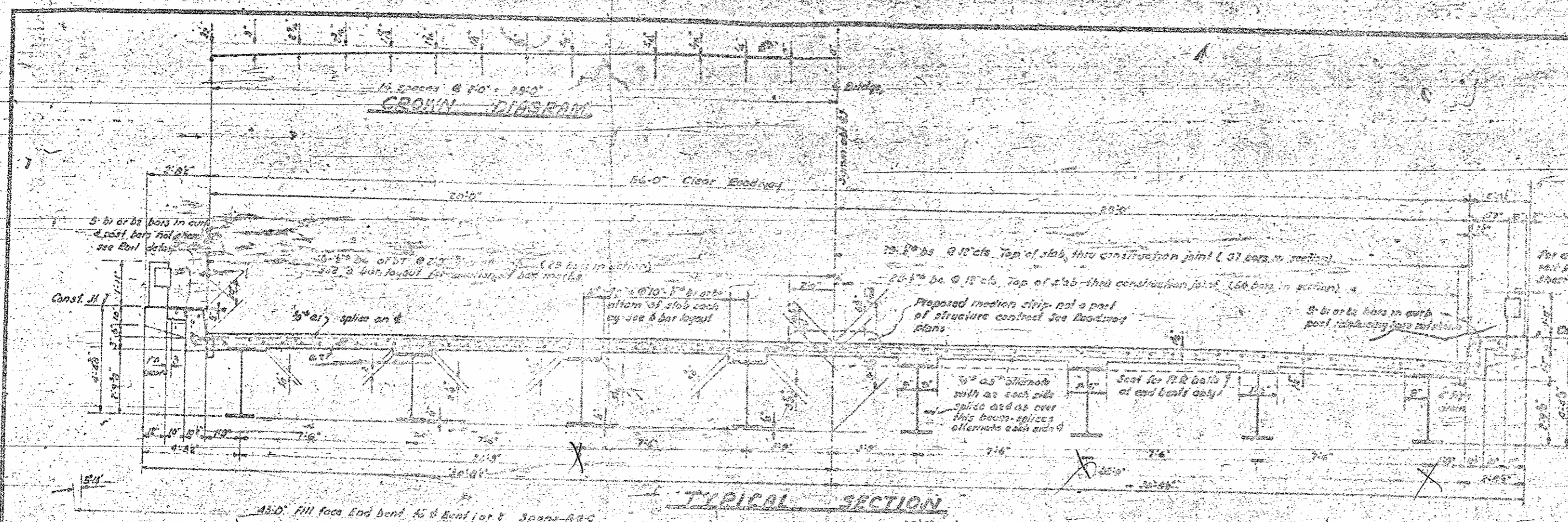
**PROJECT NO. 3002**  
**CUMFORD COUNTY**  
**STATION 171+13.3 OF U.S. 311**  
**PART A**

STATE OF NORTH CAROLINA  
 STATE HIGHWAY AND  
 PUBLIC WORKS COMMISSION  
 GENERAL DRAWING  
 FOR BRIDGE OVER  
 U.S. 311  
 EUSTEN THOMAS & COMPANY  
 502-D WELLS BLDG.  
 RALEIGH, N.C.

SPECIAL  
 CHECKED BY  
 DESIGNED BY  
 DATE

29-48-10

DATE	BY	REVISION
8-1-51	H. S. COLE	1-1
		2-1



SPECIAL	APPROVED BY	DATE
	CHECKED BY	DATE
STANDARD	DESIGNED BY	DATE
	DRAWN BY	DATE

PROJECT NO. 5402  
 GUILFORD COUNTY  
 STATION 171+13.3 to 171+13.5  
 PART A

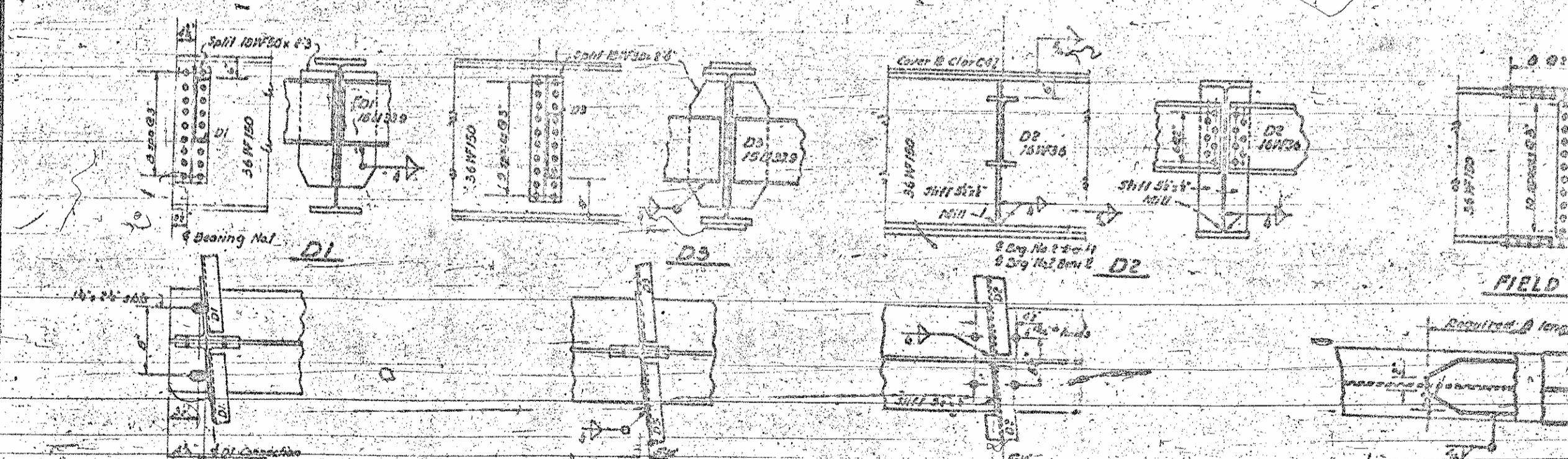
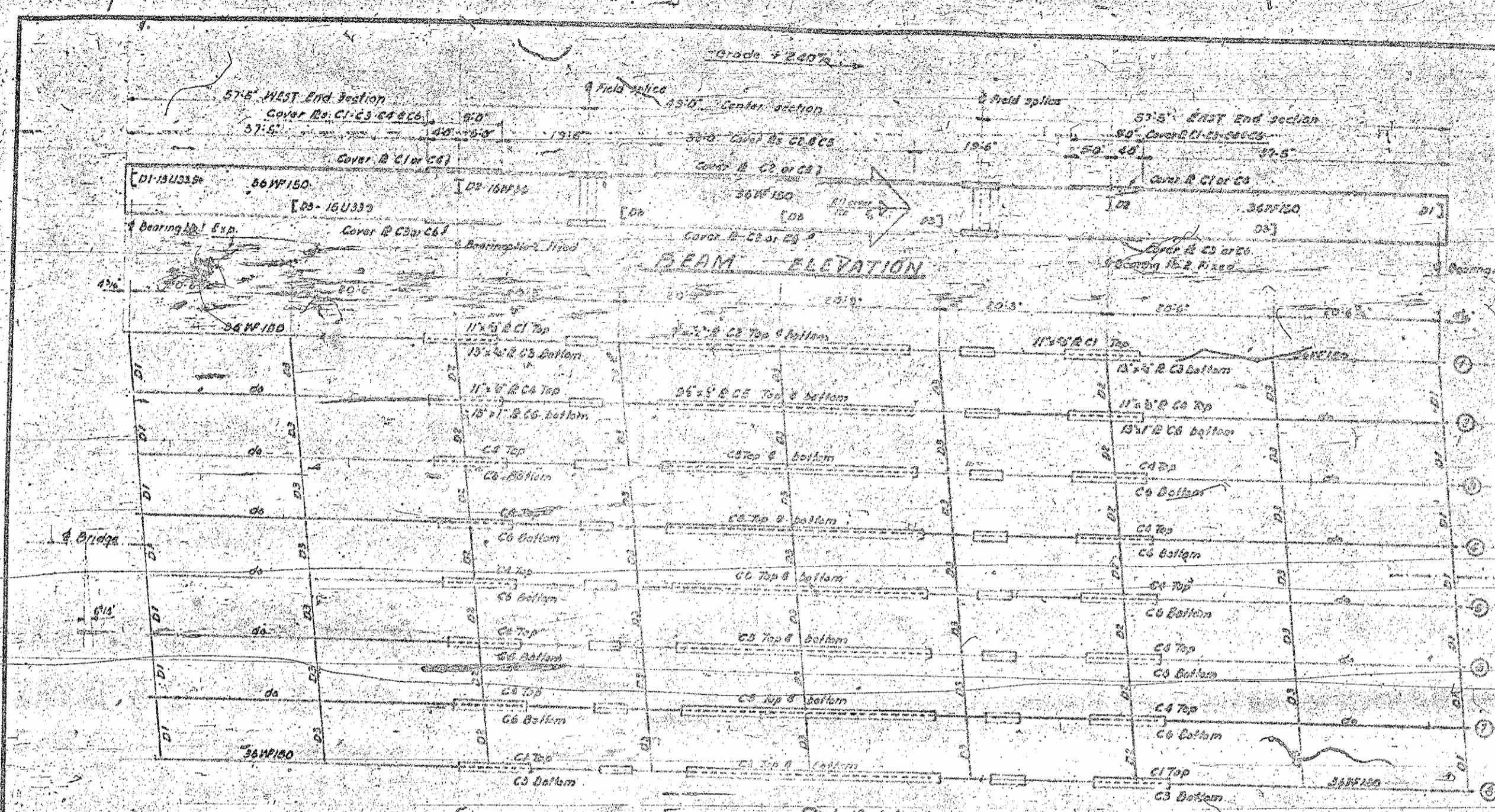
STATE OF NORTH CAROLINA  
 STATE HIGHWAY AND  
 PUBLIC WORKS COMMISSION

SUPERSTRUCTURE  
 CONCRETE SLAB DETAILS  
 150'-0" x 40'-0" CONTINUOUS

AUGUST 1951

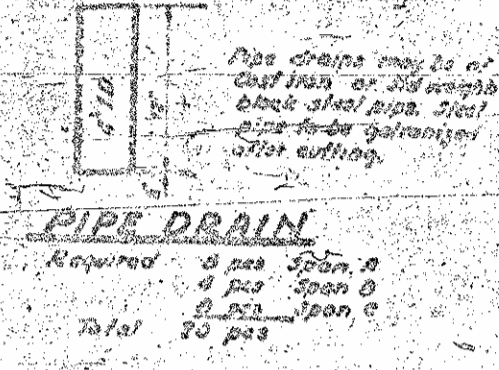
DESIGNED BY: H. S. COLE  
 DRAWN BY: W. H. GARDNER





NO.	DATE	PROJECT NO.	SCALE	BY
1	11-15-50	5408	1/4" = 1'-0"	J.E.

PART A



**NOTE**  
 Assumed live load ASD 316-48  
 For additional Design Data and General Notes see sheet 5-A  
 For typical section of superstructure see concrete slab plans  
 For detail of bearing assemblies see sheet 5-B-50  
 Dimensions shown on this drawing are 1/8" of 65" after making field splice, moment plates shall be adjusted to center on top (only) or of 65" after this adjustment the pin sleeves shall be fitted with great and anchor bolt nuts pull tight  
 General framing will be required field connections to be bolted and end of members mortared  
 All open holes unless otherwise noted to be 4" and all fish 1/4"

PROJECT NO. 5408  
 GUILFORD COUNTY  
 STATION 171+13.9, 140.0  
 PART A

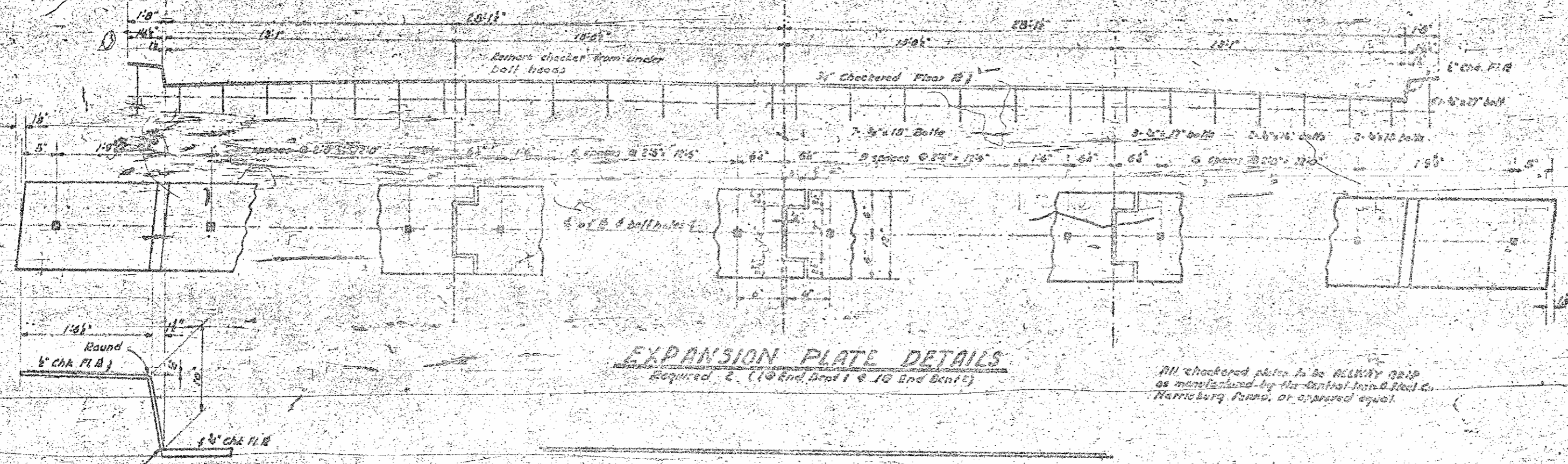
STATE OF NORTH CAROLINA  
 STATE HIGHWAY AND  
 PUBLIC WORKS COMMISSION

**SUPERSTRUCTURE  
 STRUCTURAL STEEL  
 PLAN & DETAILS  
 43'-0" CONTINUOUS SPANS  
 C2 LA EN CREW  
 AUGUST 1951**

DESIGNED BY: J.E. [Signature]  
 CHECKED BY: [Signature]  
 DATE: 11-15-50

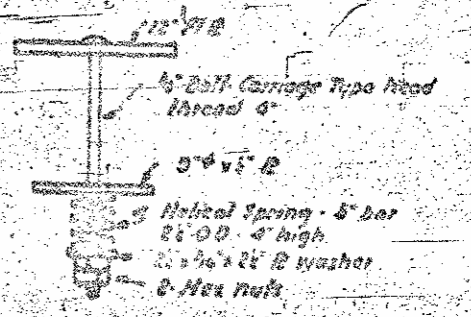
SPECIAL	REVISIONS	DATE
STANDARD	1	11-15-50

NO.	DATE	REVISION	BY
1	5-30-31		

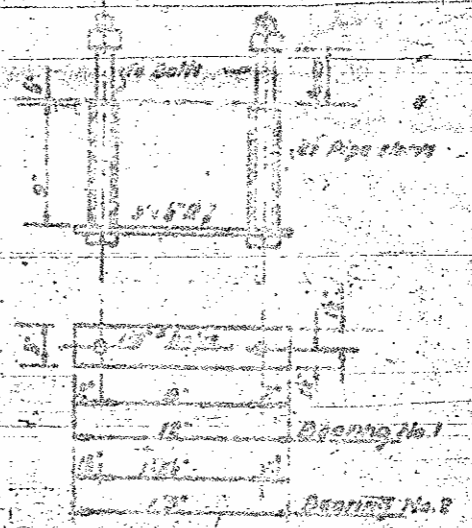
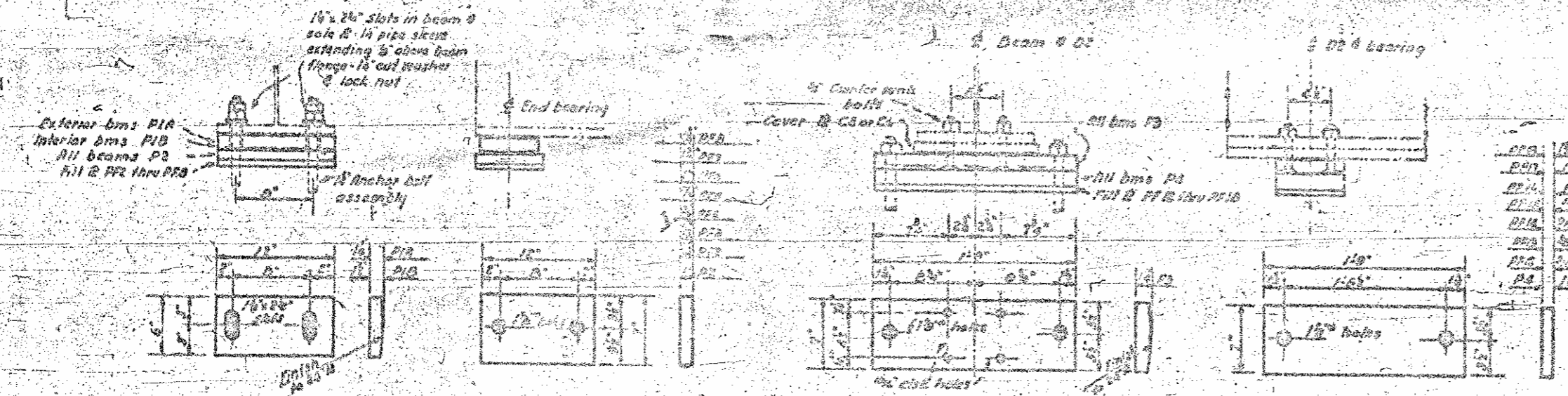


**EXPANSION PLATE DETAILS**  
Required 2 (1 @ End Bent 1 & 1 @ End Bent 2)

**BOLT ASSEMBLY**  
Required 30 Assemblies each B



All checkered plates to be **ALUMINUM GRIP** as manufactured by the Sentinel Iron & Steel Co., Harrisburg, Penna. or approved equal.



**ANCHOR BOLT ASSEMBLY**

Required:  
For Bearing No. 1  
For Bearing No. 2

**Bearing No. 1**

Beam	Plate	Size	Quantity
At End Bent No. 1 or End Bent No. 2	Beam 1	1/2\"/>	

**Bearing No. 2**

Beam	Plate	Size	Quantity
At Interior supports Bent No. 1 or Bent No. 2	Beam 1	1/2\"/>	

**Bearing Plate Details**

SPECIAL	DATE
STANDARD	DATE

**PROJECT NO. 8402**  
**QUILBOURNE COUNTY**  
**STATION 171+103.6**  
**PART A**

STATE OF NORTH CAROLINA  
STATE HIGHWAY and  
PUBLIC WORKS COMMISSION

**EXPANSION & BEARING  
PLATE DETAILS**

APRIL 1931

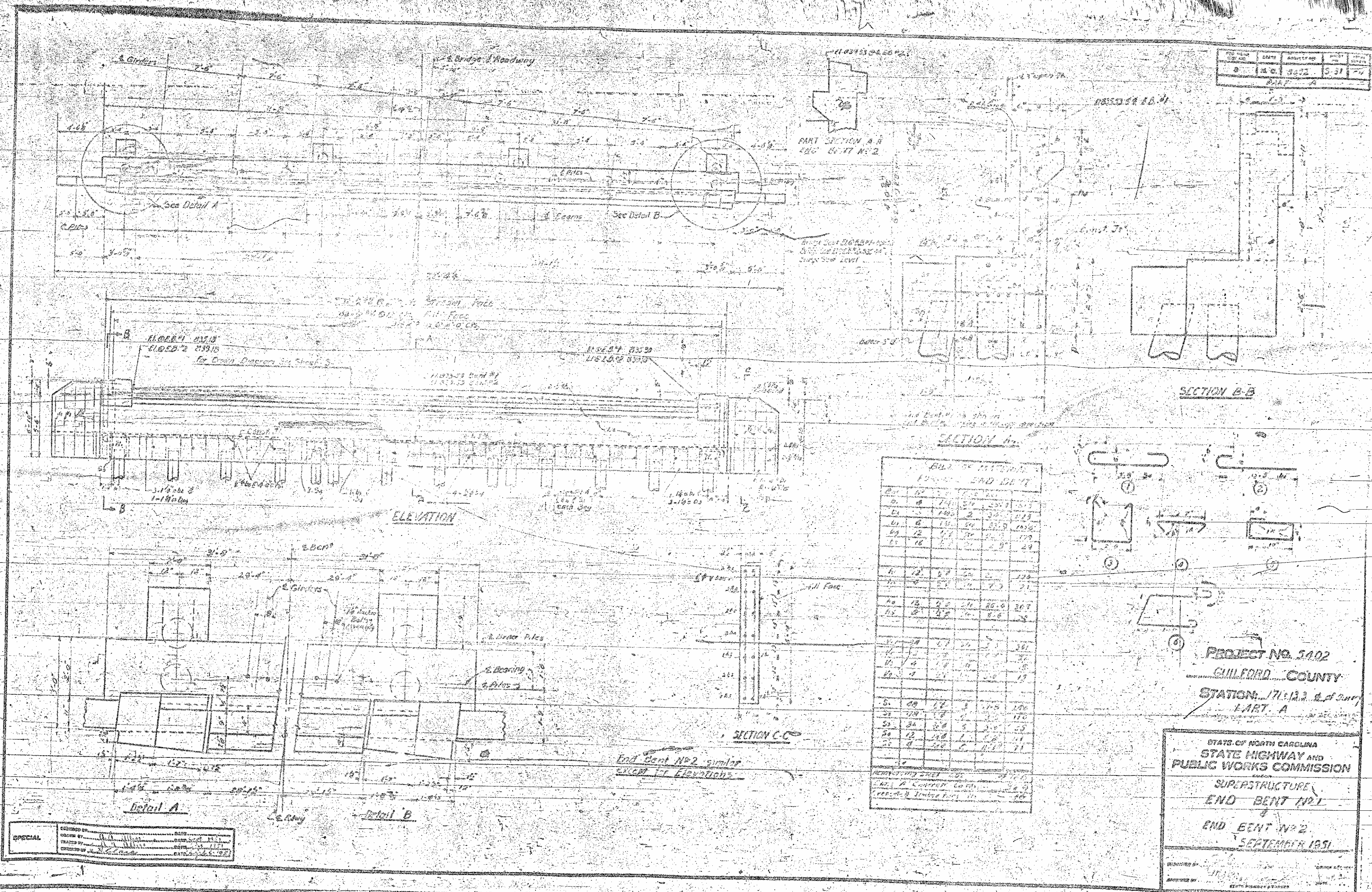


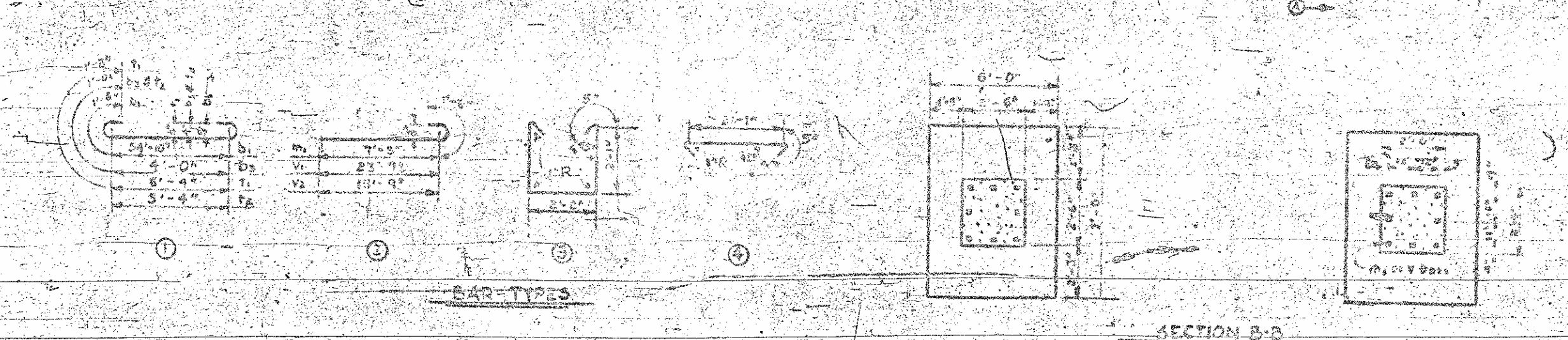
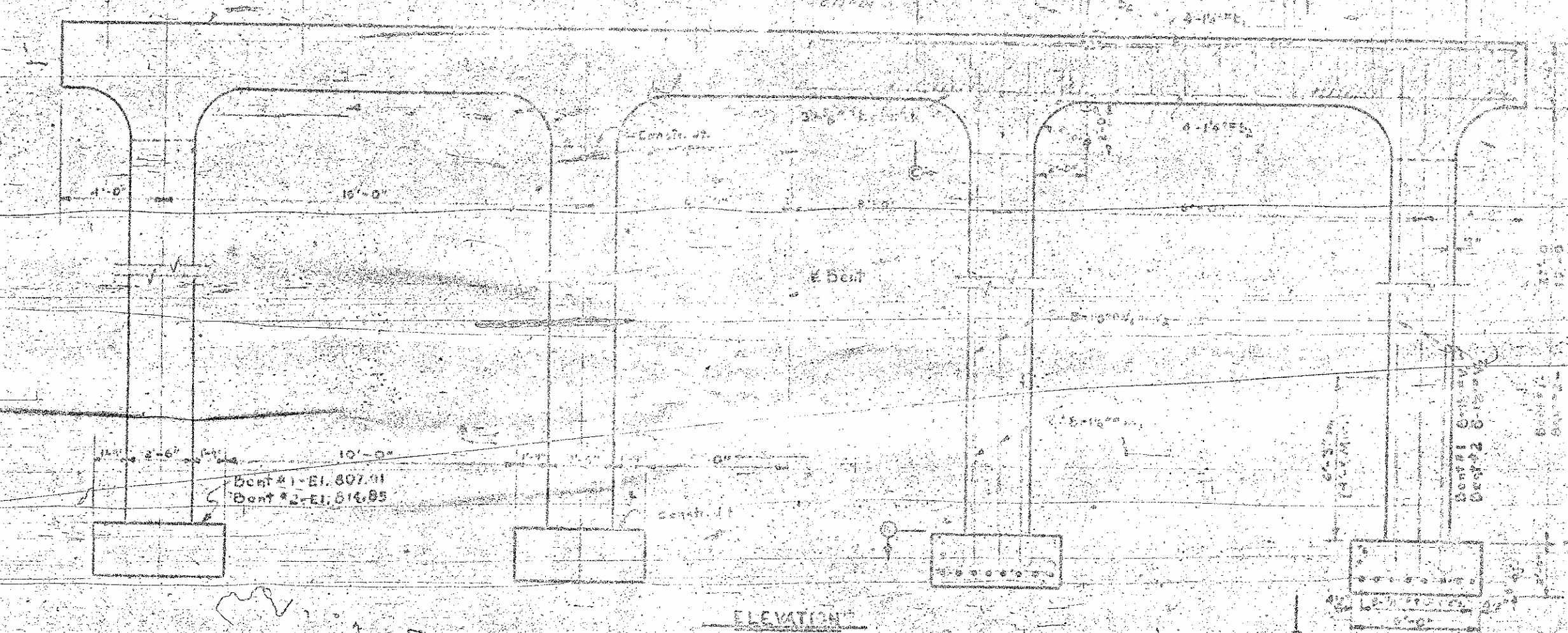
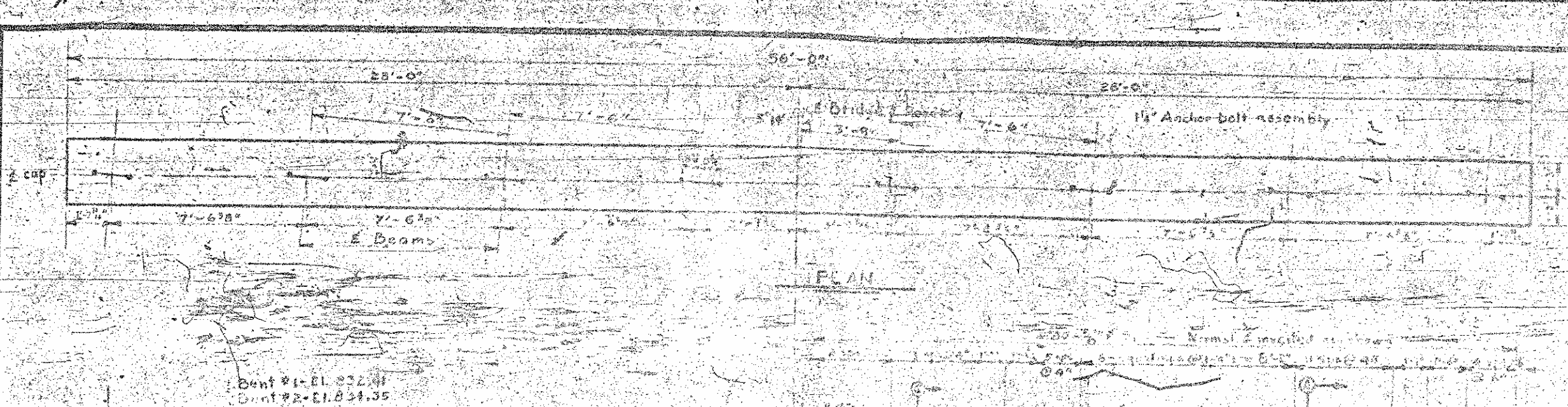
TABLE OF MATERIALS  
 END BENT NO. 1

NO.	DESCRIPTION	QUANTITY	UNIT	PRICE	TOTAL
1	STEEL BEAMS	12	LB	1.25	15.00
2	PLATES	10	SQ FT	0.15	1.50
3	WELDS	100	LINEAL FT	0.05	5.00
4	CONCRETE	100	CY	1.00	100.00
5	REINFORCING	100	LB	0.10	10.00
6	BRICK	100	SQ YD	0.20	20.00
7	PAINT	100	GAL	0.10	10.00
8	LABOR	100	HOUR	0.10	10.00
9	TRAVEL	100	MILE	0.05	5.00
10	SMALL MATERIALS	100	UNIT	0.05	5.00
11	PROFIT	100	PERCENT	0.10	10.00
12	TOTAL				175.00

PROJECT NO. 3402  
 GUILFORD COUNTY  
 STATION 71+12.2 E. of Survey  
 PART A

STATE OF NORTH CAROLINA  
 STATE HIGHWAY AND  
 PUBLIC WORKS COMMISSION  
 SUPERSTRUCTURE  
 END BENT NO. 1  
 END BENT NO. 2  
 SEPTEMBER 1951

SPECIAL  
 DESIGNED BY: [Signature]  
 DRAWN BY: [Signature]  
 CHECKED BY: [Signature]  
 DATE: 9/15/51



NO.	DATE	BY	REVISION
1	8-1-51	...	...

NO.	DESCRIPTION	UNIT	QTY	PRICE	TOTAL
1	...	...	...	...	...
2	...	...	...	...	...
3	...	...	...	...	...
4	...	...	...	...	...
5	...	...	...	...	...
6	...	...	...	...	...
7	...	...	...	...	...
8	...	...	...	...	...
9	...	...	...	...	...
10	...	...	...	...	...
11	...	...	...	...	...
12	...	...	...	...	...
13	...	...	...	...	...
14	...	...	...	...	...
15	...	...	...	...	...
16	...	...	...	...	...
17	...	...	...	...	...
18	...	...	...	...	...
19	...	...	...	...	...
20	...	...	...	...	...
21	...	...	...	...	...
22	...	...	...	...	...
23	...	...	...	...	...
24	...	...	...	...	...
25	...	...	...	...	...
26	...	...	...	...	...
27	...	...	...	...	...
28	...	...	...	...	...
29	...	...	...	...	...
30	...	...	...	...	...
31	...	...	...	...	...
32	...	...	...	...	...
33	...	...	...	...	...
34	...	...	...	...	...
35	...	...	...	...	...
36	...	...	...	...	...
37	...	...	...	...	...
38	...	...	...	...	...
39	...	...	...	...	...
40	...	...	...	...	...
41	...	...	...	...	...
42	...	...	...	...	...
43	...	...	...	...	...
44	...	...	...	...	...
45	...	...	...	...	...
46	...	...	...	...	...
47	...	...	...	...	...
48	...	...	...	...	...
49	...	...	...	...	...
50	...	...	...	...	...
51	...	...	...	...	...
52	...	...	...	...	...
53	...	...	...	...	...
54	...	...	...	...	...
55	...	...	...	...	...
56	...	...	...	...	...
57	...	...	...	...	...
58	...	...	...	...	...
59	...	...	...	...	...
60	...	...	...	...	...
61	...	...	...	...	...
62	...	...	...	...	...
63	...	...	...	...	...
64	...	...	...	...	...
65	...	...	...	...	...
66	...	...	...	...	...
67	...	...	...	...	...
68	...	...	...	...	...
69	...	...	...	...	...
70	...	...	...	...	...
71	...	...	...	...	...
72	...	...	...	...	...
73	...	...	...	...	...
74	...	...	...	...	...
75	...	...	...	...	...
76	...	...	...	...	...
77	...	...	...	...	...
78	...	...	...	...	...
79	...	...	...	...	...
80	...	...	...	...	...
81	...	...	...	...	...
82	...	...	...	...	...
83	...	...	...	...	...
84	...	...	...	...	...
85	...	...	...	...	...
86	...	...	...	...	...
87	...	...	...	...	...
88	...	...	...	...	...
89	...	...	...	...	...
90	...	...	...	...	...
91	...	...	...	...	...
92	...	...	...	...	...
93	...	...	...	...	...
94	...	...	...	...	...
95	...	...	...	...	...
96	...	...	...	...	...
97	...	...	...	...	...
98	...	...	...	...	...
99	...	...	...	...	...
100	...	...	...	...	...

PROJECT NO. 54-02  
 GUILFORD COUNTY  
 STATION 171+13.2 of Sum  
 PART A

STATE OF NORTH CAROLINA  
 STATE HIGHWAY AND  
 PUBLIC WORKS COMMISSION  
 SUBSTRUCTURE  
 BENTS #1 & #2  
 AUGUST 1951

SPECIAL INSTRUCTIONS TO CONTRACTOR