

NOTES

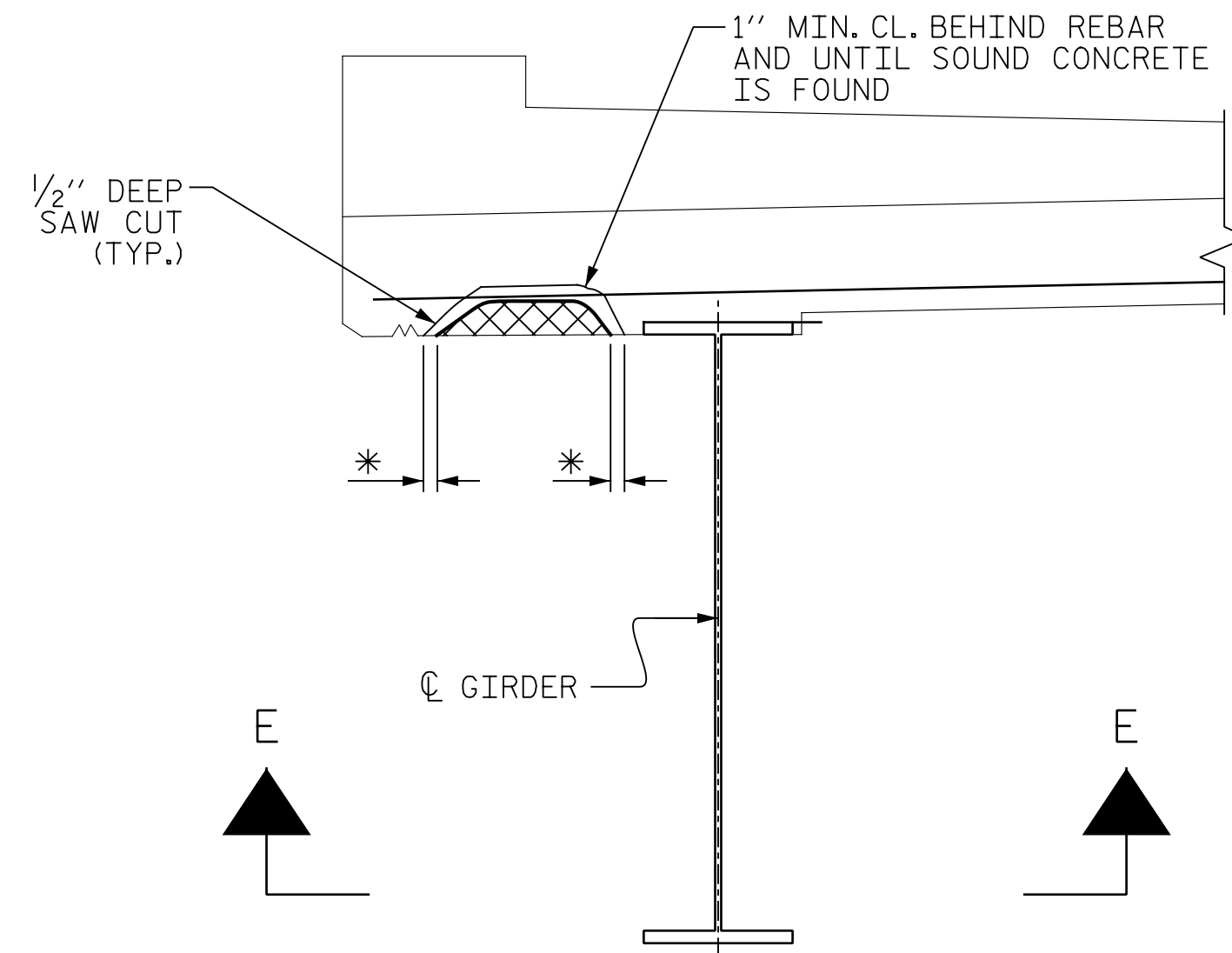
CONTRACTOR SHALL REMOVE SURFACE CONCRETE TO VERIFY THAT SAWCUT DEPTH WILL NOT DAMAGE EXISTING REINFORCING STEEL.

CONTRACTOR SHALL SAW CUT TO A NOMINAL DEPTH OF 1/2" BUT REINFORCING STEEL SHALL NOT BE DAMAGED.

CONTRACTOR SHALL SAW CUT THE REPAIR AREAS SO THAT THE CORNERS ARE SQUARE AS INDICATED ON THE DETAILS.

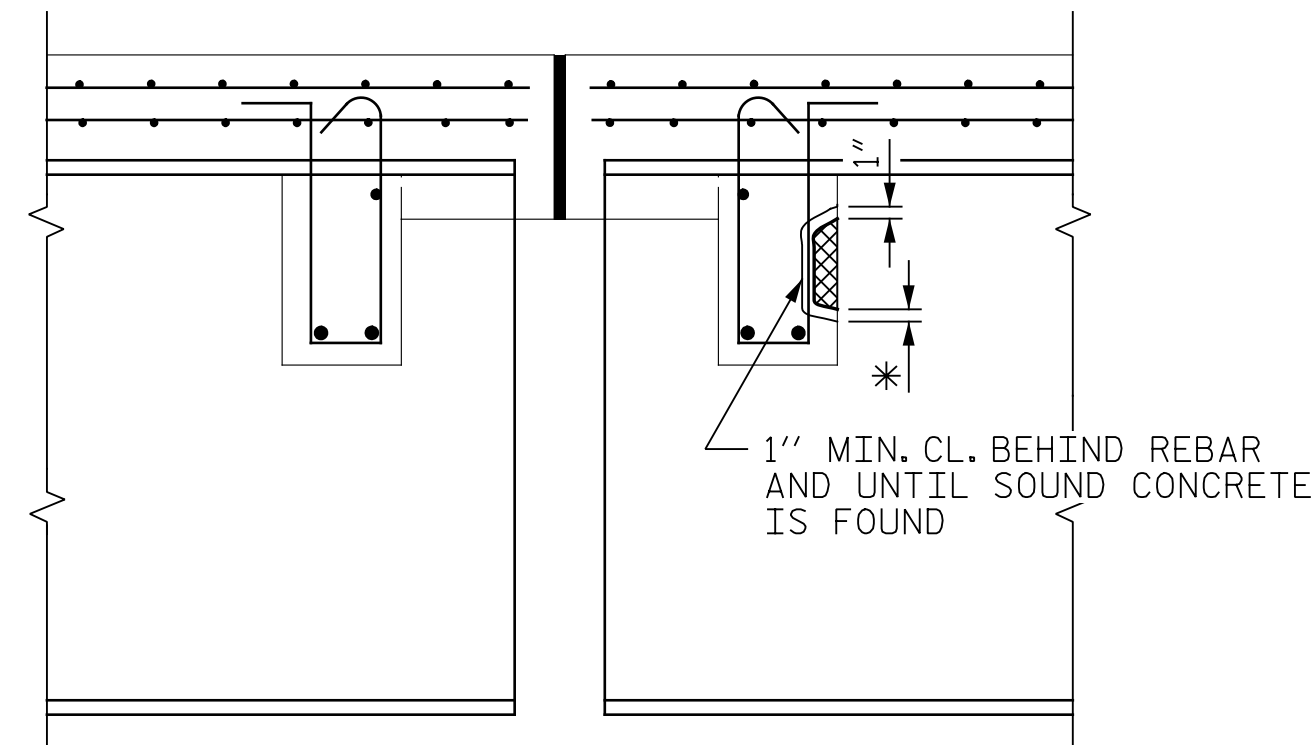
FOR SHOTCRETE REPAIRS, SEE SPECIAL PROVISIONS.

FOR CONCRETE DIAPHRAGM REPAIR, SEE SPECIAL PROVISIONS.



TYPICAL SECTION

* REMOVE CONCRETE UNTIL SOUND CONCRETE IS FOUND (1" MIN. DEPTH)

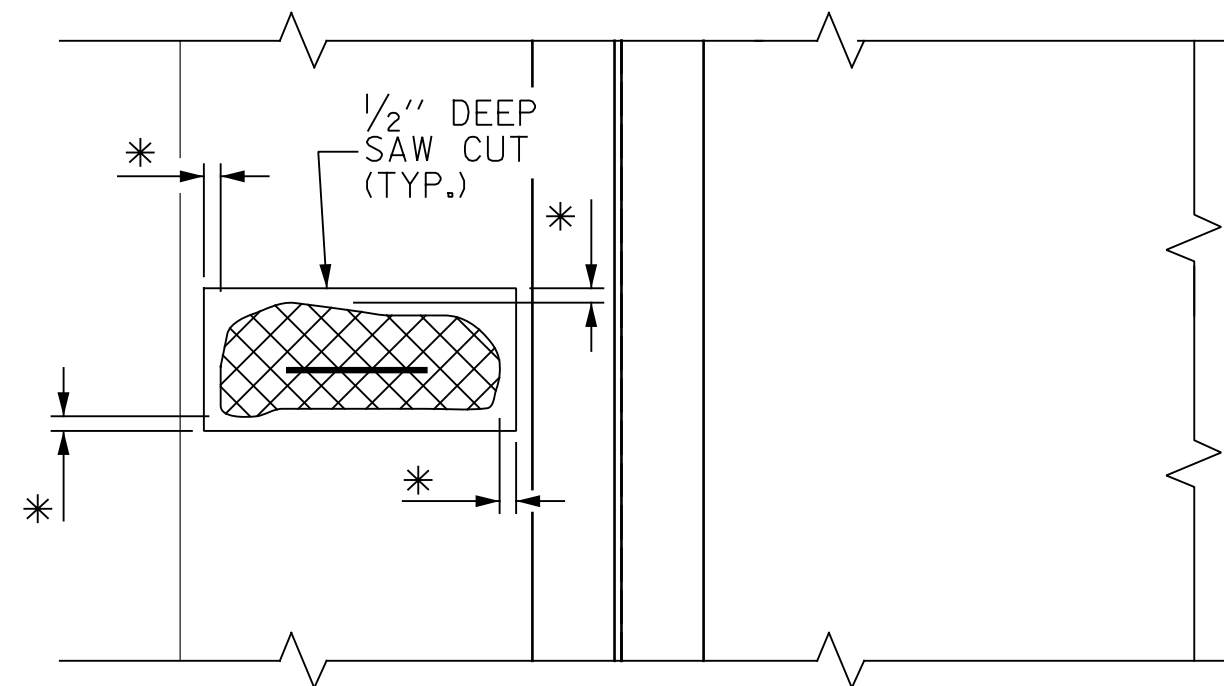


TYPICAL SECTION AT EXPANSION JOINTS

* REMOVE CONCRETE UNTIL SOUND CONCRETE IS FOUND (1" MIN. DEPTH)

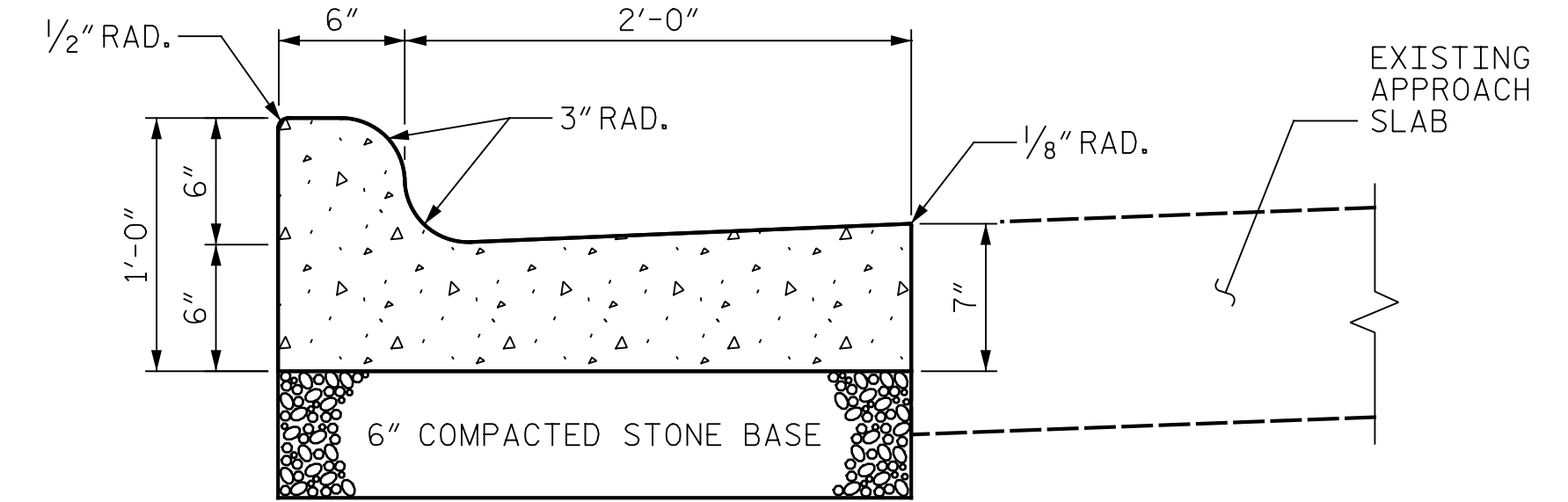


NOTE:
EXISTING REBAR TO REMAIN IN PLACE.
CLEAN AND REPAIR AS NECESSARY.



SECTION E-E

OVERHANG DETAILS



2'-6" CURB AND GUTTER REPLACEMENT

NOTES:

PLACE CONTRACTION JOINTS AT 10' INTERVALS. EXPECT THAT A 15' SPACING MAY BE USED WHEN A MACHINE IS USED OR SATISFACTORY SUPPORT FOR THE FACE FROM CAN BE OBTAINED WITH THE USE OF TEMPLATES AT 10' INTERVALS.

JOINT SPACING MAY BE ALTERED ID REQUIRED BY THE ENGINEER.

CONTRACTION JOINTS MAY BE INSTALLED WITH THE USED OF TEMPLATES OR FORMED BY OTHER APPROVED METHODS. CONSTRUCT NON-TEMPLATE FORMED JOINTS A MIN. OF 1/2" DEEP.

FILL ALL CONSTRUCTION JOINTS WITH JOINT FILLER AND SEALER.

COMPACTED STONE BASE WILL BE PAID FOR AS PART OF THE CONTRACT UNIT PRICE BID FOR 2'-6" CURB & GUTTER.

PROJECT NO. 15BPR.44
CUMBERLAND COUNTY
 BRIDGE NO. 250053



DocuSigned by:
Eric B. Nelson 12/3/2021

STATE OF NORTH CAROLINA
 DEPARTMENT OF TRANSPORTATION
 RALEIGH

**OVERHANG,
 DIAPHRAGM, AND
 CURB AND GUTTER
 REPAIR DETAILS**

DRAWN BY : J. MYA DATE : 01/2021
 CHECKED BY : J. YANACCONO DATE : 01/2021

PLANS PREPARED BY:
 2610 Wycliff Road
 Suite 102
 Raleigh NC 27607-3073
 (919) 420-7660
 Excellence Delivered As Promised [NC Lic. No. F-0270]

DOCUMENT NOT CONSIDERED
 FINAL UNLESS ALL
 SIGNATURES COMPLETED

REVISIONS						SHEET NO.
NO.	BY:	DATE:	NO.	BY:	DATE:	TOTAL SHEETS
1			3			S-18
2			4			19