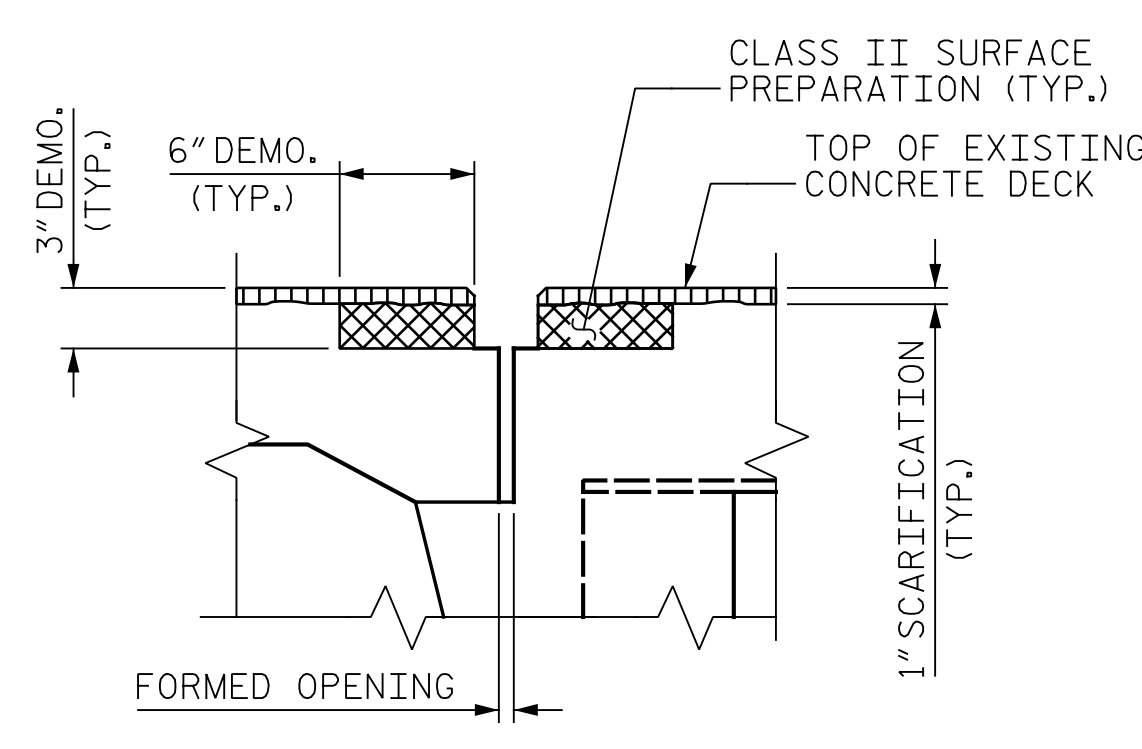
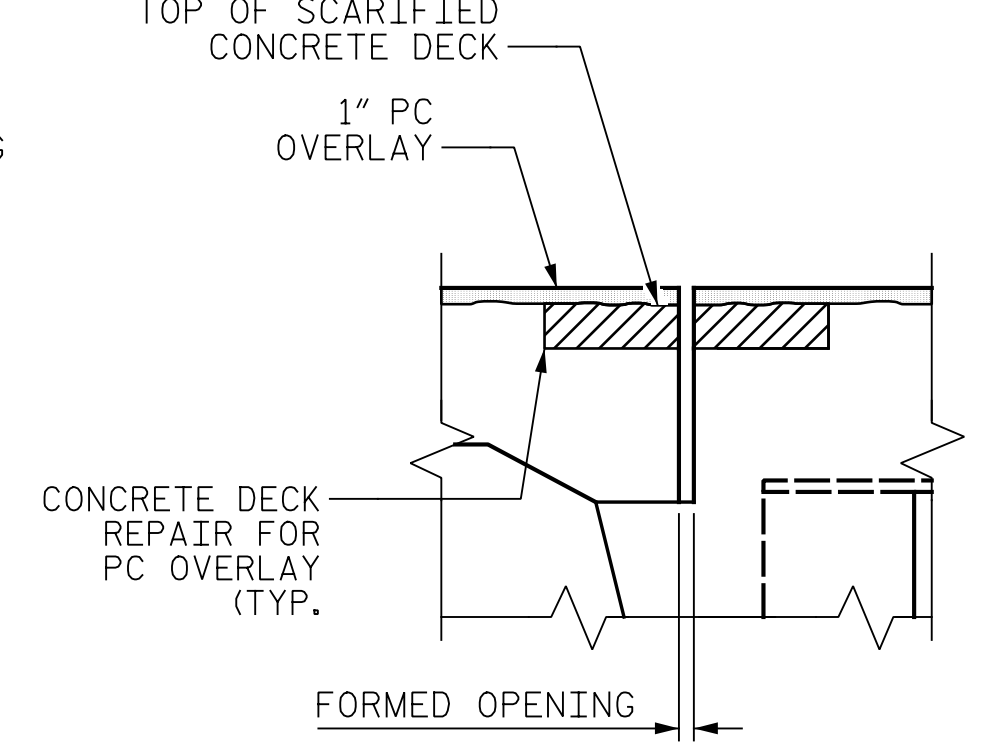


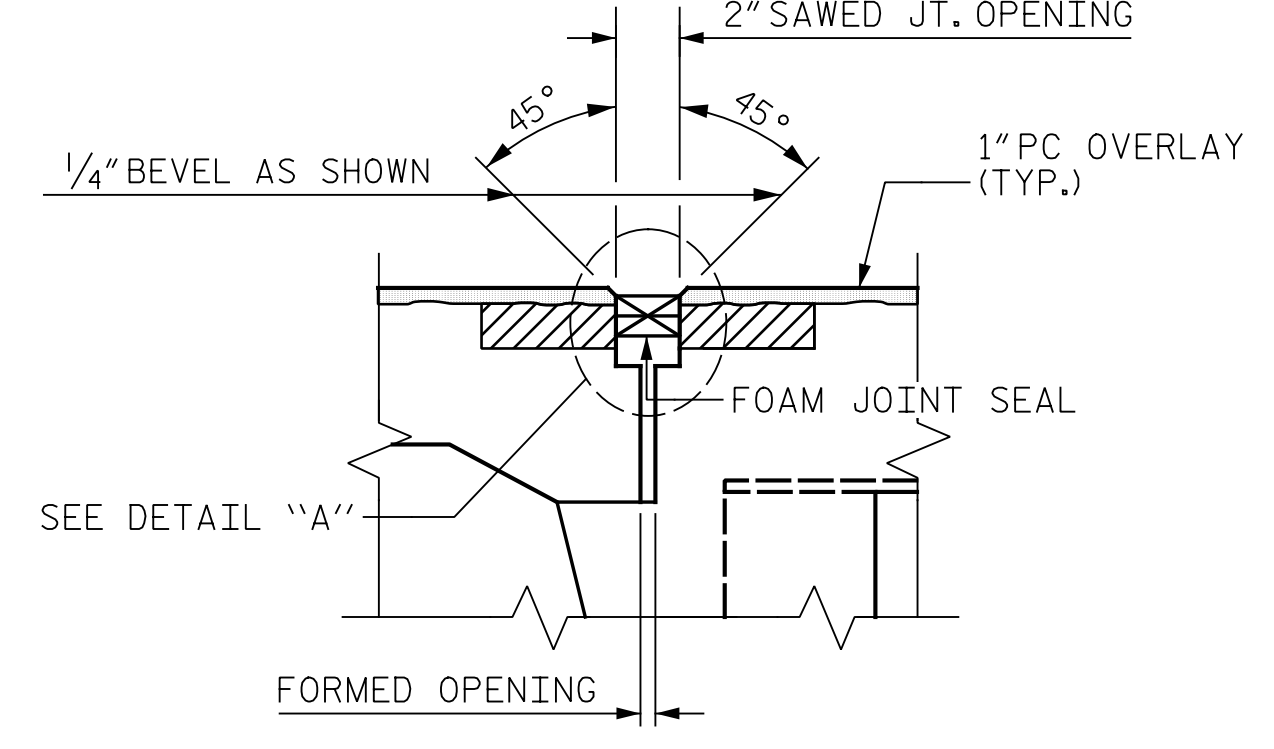
EXISTING



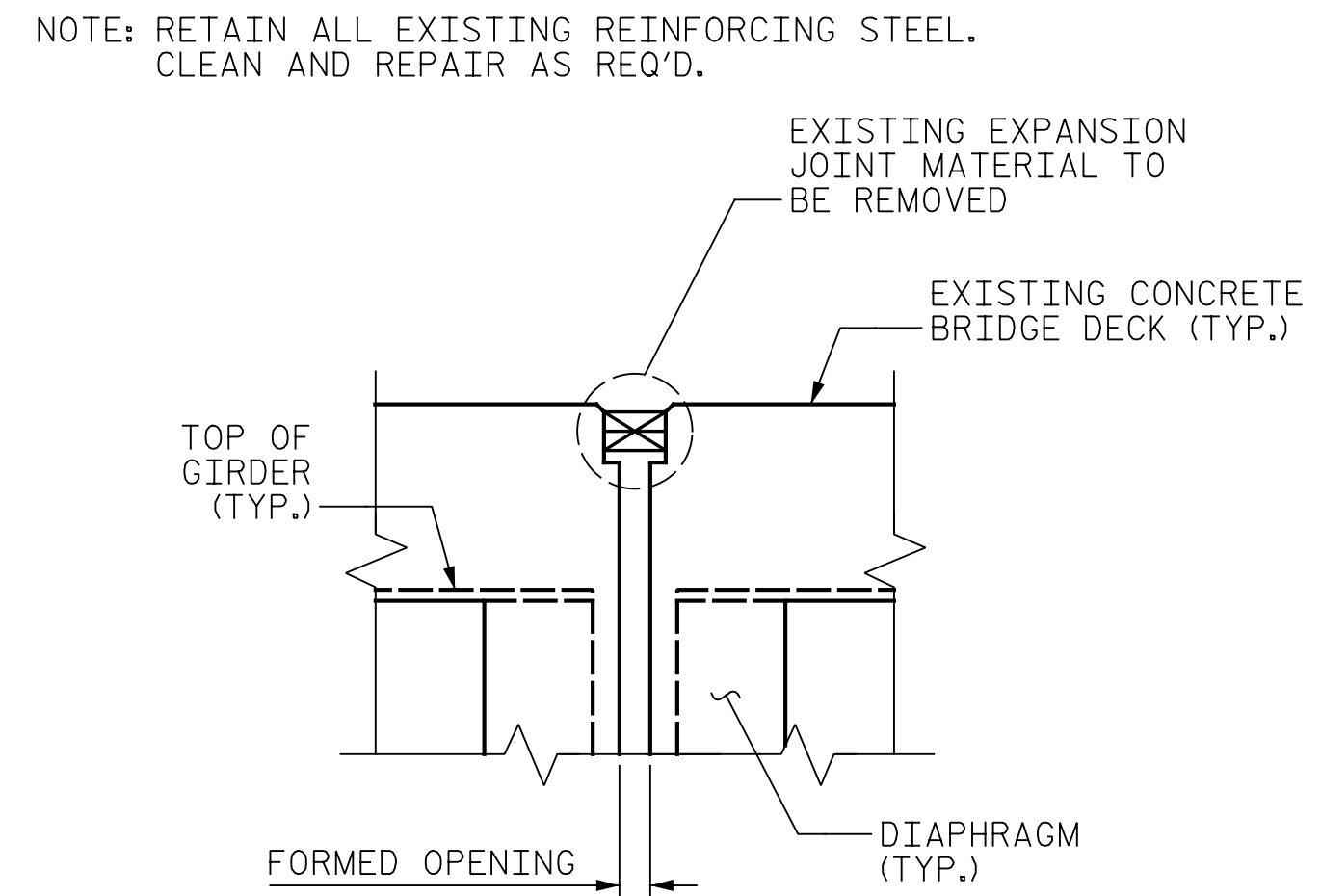
MINIMUM CLASS II SURFACE PREPARATION & SCARIFICATION



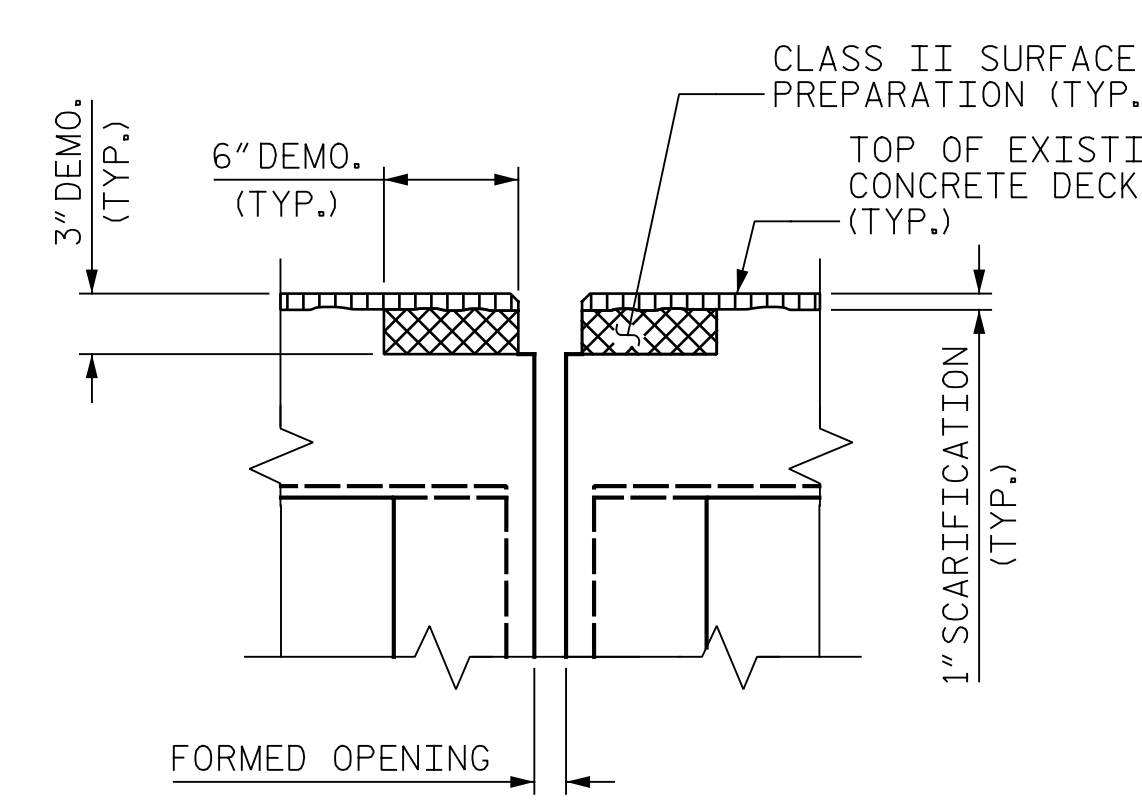
PROPOSED JOINT PRE-SAWED & PC OVERLAY



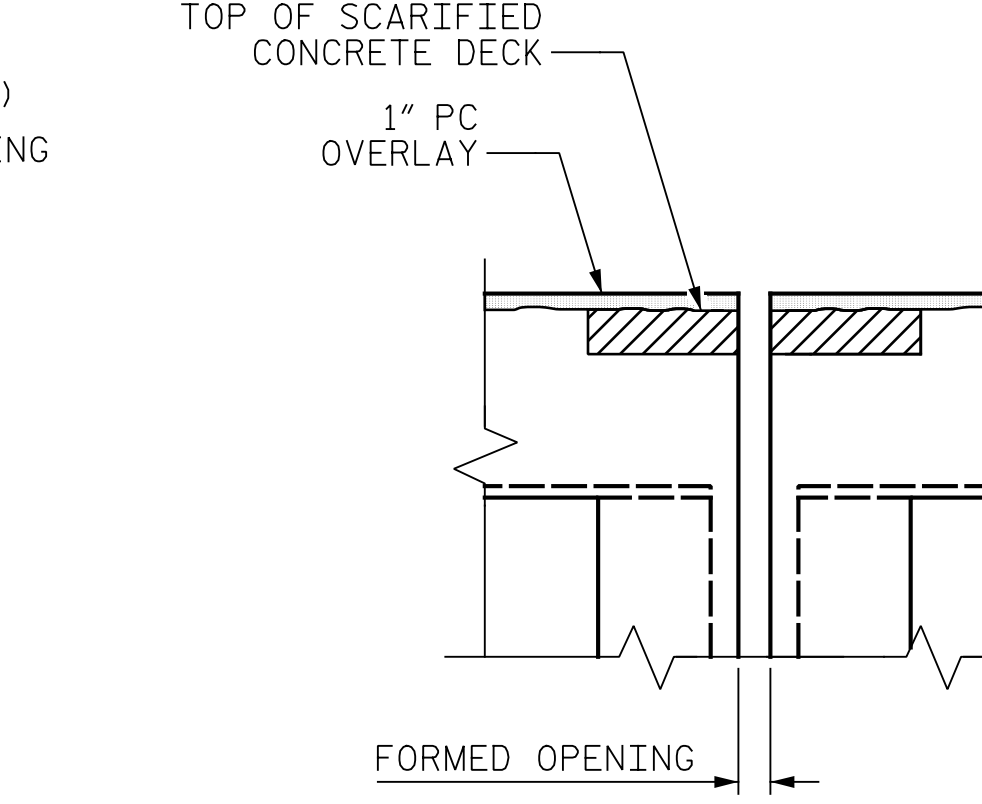
PROPOSED JOINT WITH SAWS DIMENSIONS



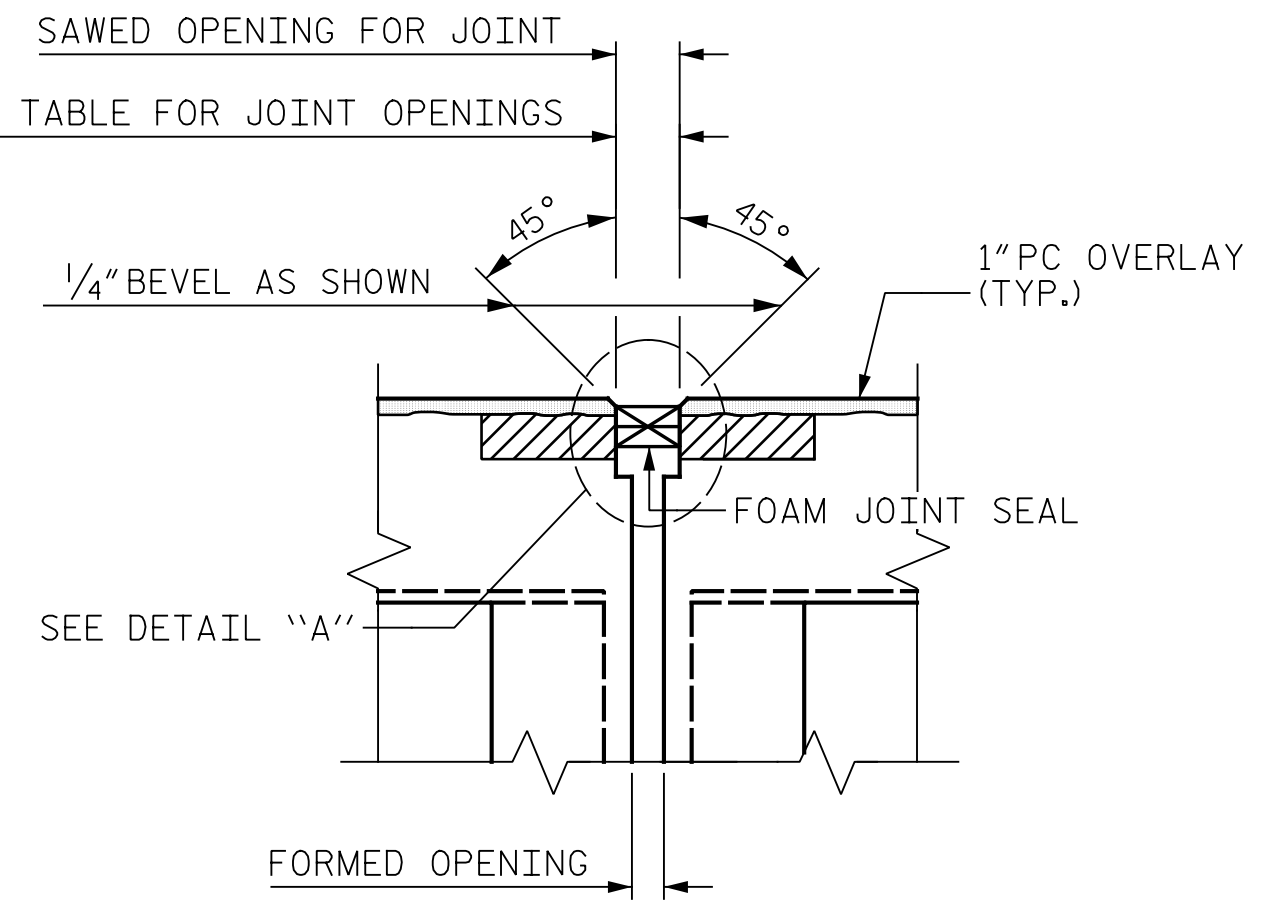
EXISTING



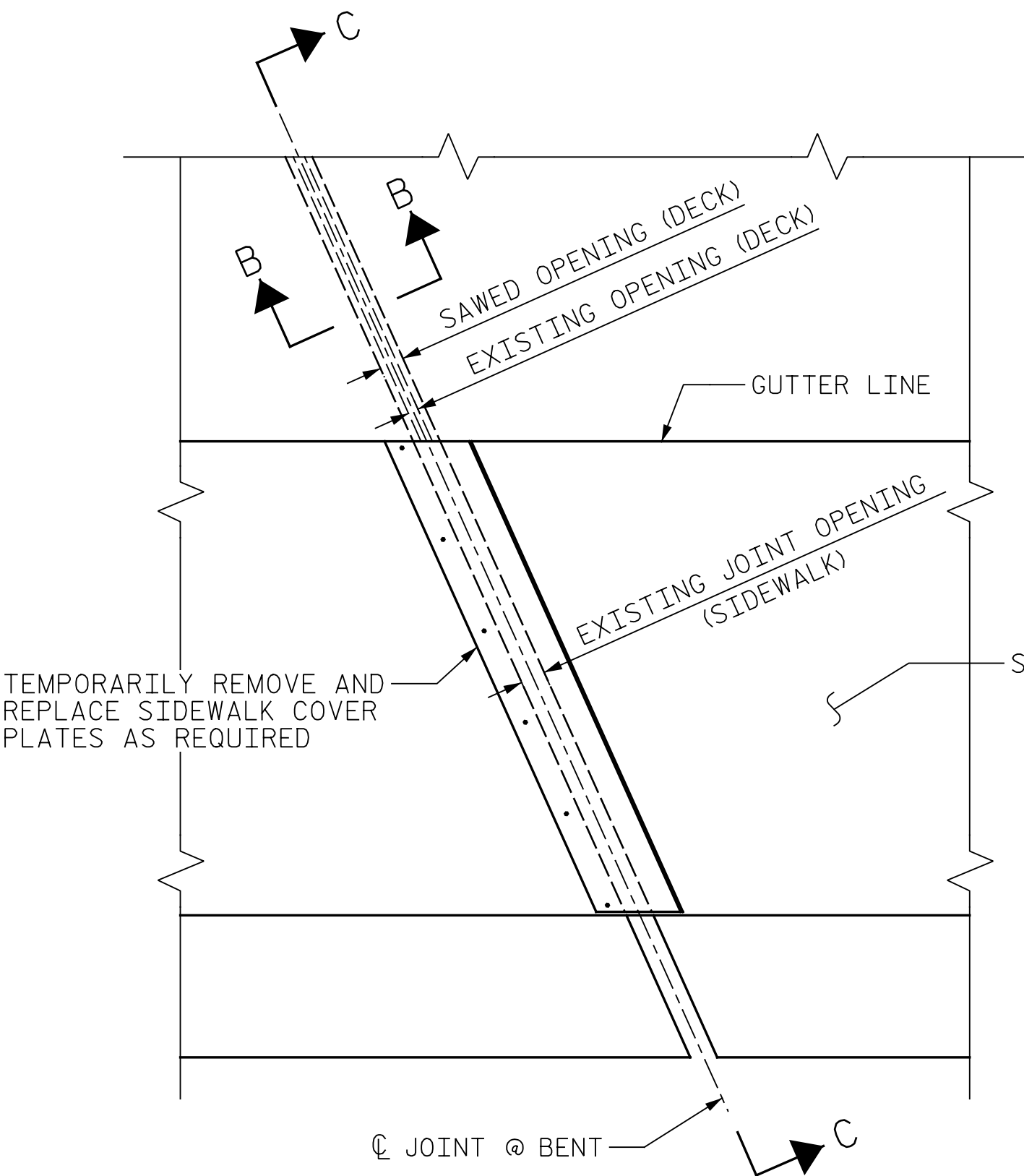
MINIMUM CLASS II SURFACE PREPARATION & SCARIFICATION



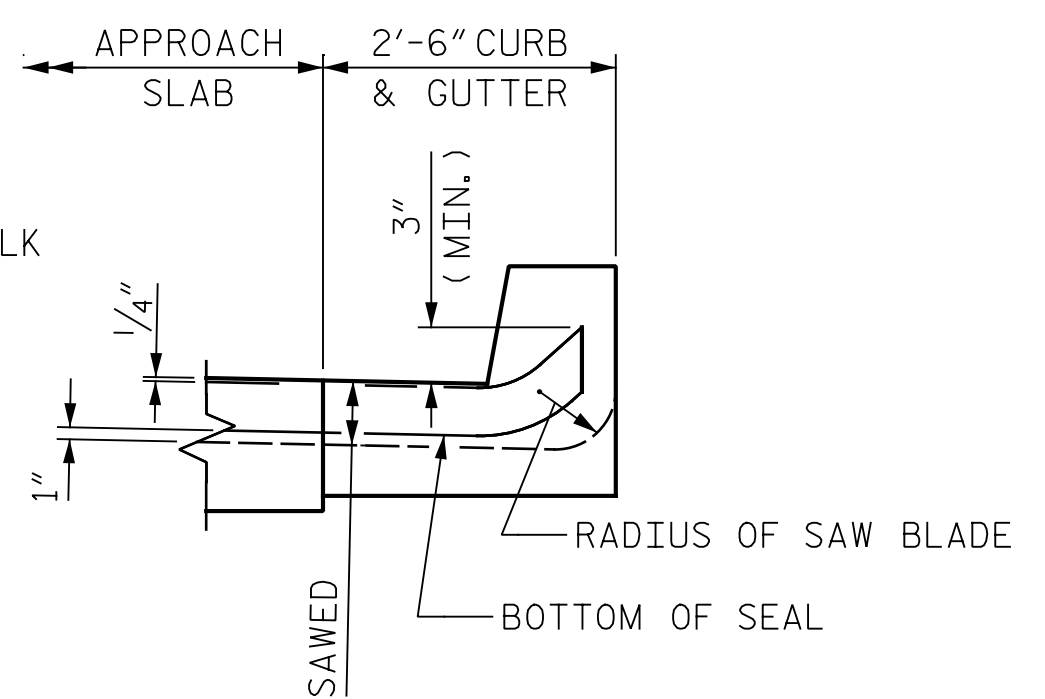
PROPOSED JOINT PRE-SAWED & PC OVERLAY



PROPOSED JOINT WITH SAWS DIMENSIONS



PLAN

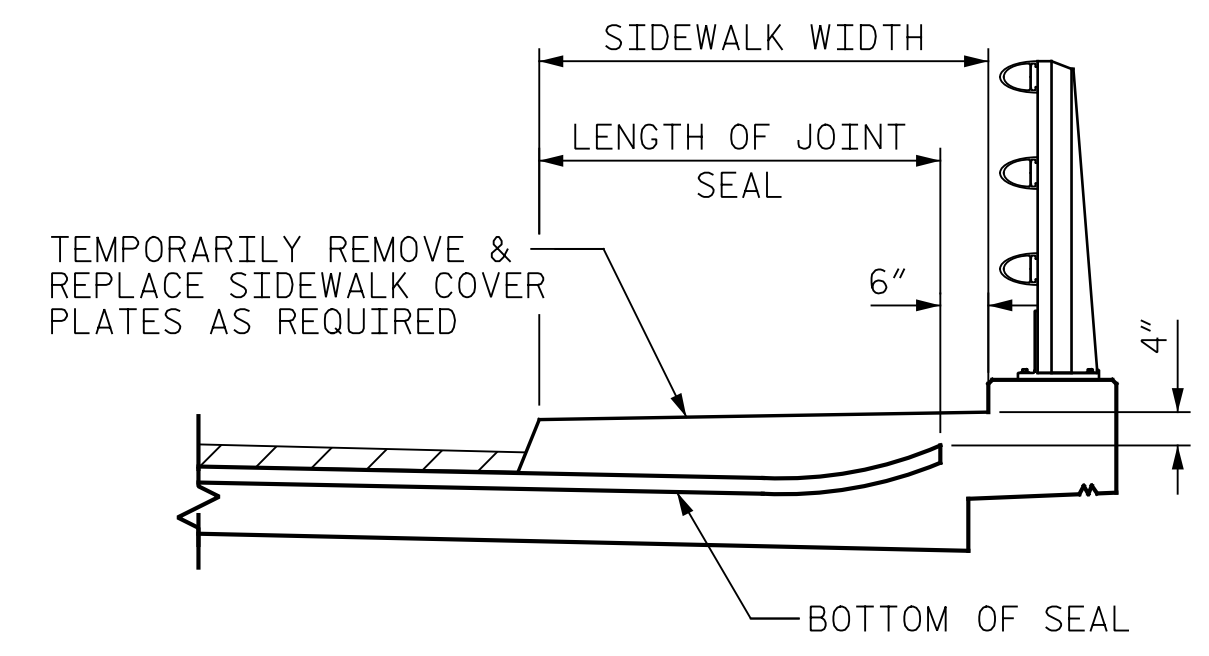


SECTION AT CURB & GUTTER

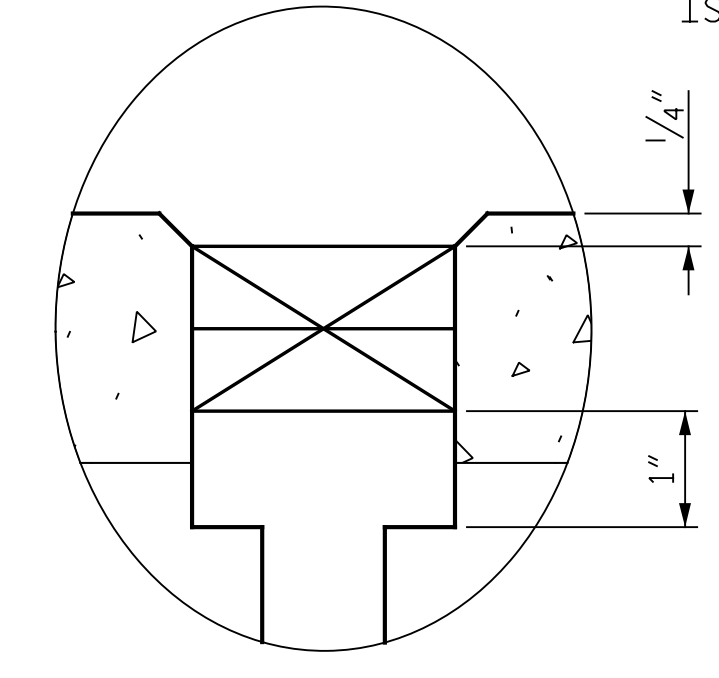
FOAM JOINT SEAL SHALL BE FACTORY FORMED OR CUT, HEAT WELDED AND TURNED UP PARALLEL TO SLOPED FACE OF CURB.

SECTION B-B

LOCATION	SAWS JT. OPENING (PERPENDICULAR TO JT.)		
	AT 45°	AT 60°	AT 90°
BENT 1	1 5/8"	1 9/16"	1 1/2"
BENT 2	1 1/16"	1 9/16"	1 3/8"
BENT 3	1 1/16"	1 9/16"	1 1/4"

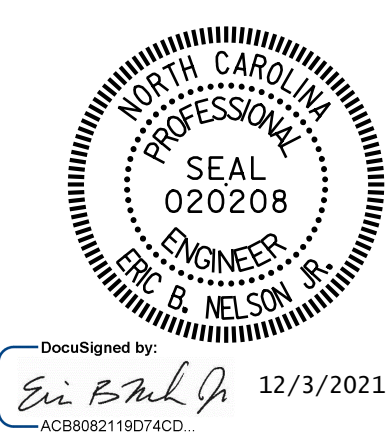


SECTION C-C



DETAIL "A"

LOCATION	FOAM JOINT SEALS FOR PRESERVATION LIN. FT.
END BENT 1	108.0
BENT 1	112.0
BENT 2	112.0
BENT 3	111.5
END BENT 2	107.5
TOTAL	551.0



DocuSigned by: Eric B. Nelson 12/3/2021

NOTES:
 FINAL JOINT SEALS SHALL NOT BE INSTALLED UNTIL THE OVERLAY OR SEALANT WORK IS COMPLETE.
 THE CONTRACTOR SHALL FIELD VERIFY THE EXISTING JOINT SEAL MATERIAL. IF THE ACTUAL JOINT SEAL VARIES FROM THE OPENING INDICATED IN THE DETAILS BY MORE THAN 1/4", NOTIFY THE ENGINEER.
 THE MANUFACTURER IS TO PROVIDE THE NOMINAL UNCOMPRESSED SEAL WIDTH OF THE FOAM JOINT SEAL FOR THE SIZE OF THE OPENING ON THE PLANS AND ACCOMMODATE THE MINIMUM EXPANSION SHOWN ON THE PLANS.
 FOAM JOINTS SHALL BE INSTALLED AS PER THE MANUFACTURER'S RECOMMENDATIONS.
 THE CONTRACTOR SHALL TAKE CARE DURING JOINT REHAB OPERATIONS NOT TO DROP ANY MATERIAL BELOW THE BRIDGE WITHOUT PROTECTIVE DEVICES BELOW TO CATCH THE MATERIAL. ANY MATERIAL THAT FALLS BELOW THE BRIDGE SHALL BE CONTAINED, REMOVED AND DISPOSED OF BY THE CONTRACTOR AT NO EXTRA COST TO THE DEPARTMENT. IF THE ENGINEER DETERMINES THAT THE PROTECTIVE DEVICES ARE NOT ADEQUATE OR NOT BEING EMPLOYED, THE WORK SHALL BE SUSPENDED UNTIL ADEQUATE PROTECTION IS PROVIDED.
 THE CONTRACTOR WILL NOT BE PERMITTED TO FORM THE JOINT IN LIEU OF SAWING THE JOINT.
 THE INSTALLED FOAM JOINTS SHALL BE WATERTIGHT.
 THE CONTRACTOR SHALL SAW CUT TO A NOMINAL DEPTH OF 1/2" BUT REINFORCING STEEL SHALL NOT BE DAMAGED. CONTRACTOR SHALL REMOVE SURFACE CONCRETE TO VERIFY THAT SAWCUT DEPTH WILL NOT DAMAGE EXISTING REINFORCING STEEL.
 FOR CLASS II SURFACE PREPARATION, SEE SPECIAL PROVISIONS.
 FOR FOAM JOINT SEALS FOR PRESERVATION, SEE SPECIAL PROVISIONS.
 FOR CONCRETE DECK REPAIR FOR POLYMER CONCRETE OVERLAY, SEE SPECIAL PROVISIONS.
 THE CONTRACTOR WILL NOT BE PERMITTED TO INSTALL JOINT SEALS AT BENTS 1, 2 AND 3 UNTIL ALL BEARING REPLACEMENTS AND BRIDGE JACKING IS COMPLETED AT THOSE BENTS.

PROJECT NO. 15BPR.44
 CUMBERLAND COUNTY
 BRIDGE NO. 250053

STATE OF NORTH CAROLINA
 DEPARTMENT OF TRANSPORTATION
 RALEIGH

JOINT DETAILS

DRAWN BY: T. HARTLEY DATE: 01/2021
 CHECKED BY: J. YANACCONO DATE: 01/2021

PLANS PREPARED BY:
Gannett Fleming
 Excellence Delivered As Promised
 2610 Wycliff Road Suite 102 Raleigh NC 27607-3073 (919) 420-7660 NC Lic. No. F-0270

DOCUMENT NOT CONSIDERED FINAL UNLESS ALL SIGNATURES COMPLETED

REVISIONS						SHEET NO.
NO.	BY:	DATE:	NO.	BY:	DATE:	S-6
1			3			TOTAL SHEETS
2			4			19