

**Stantec**

Stantec Consulting Services Inc.  
801 Jones Franklin Road  
Suite 3000  
Raleigh, NC 27606  
Tel. (919) 851-6866  
Fax. (919) 851-7024  
www.stantec.com  
License No. F-0672

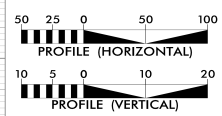
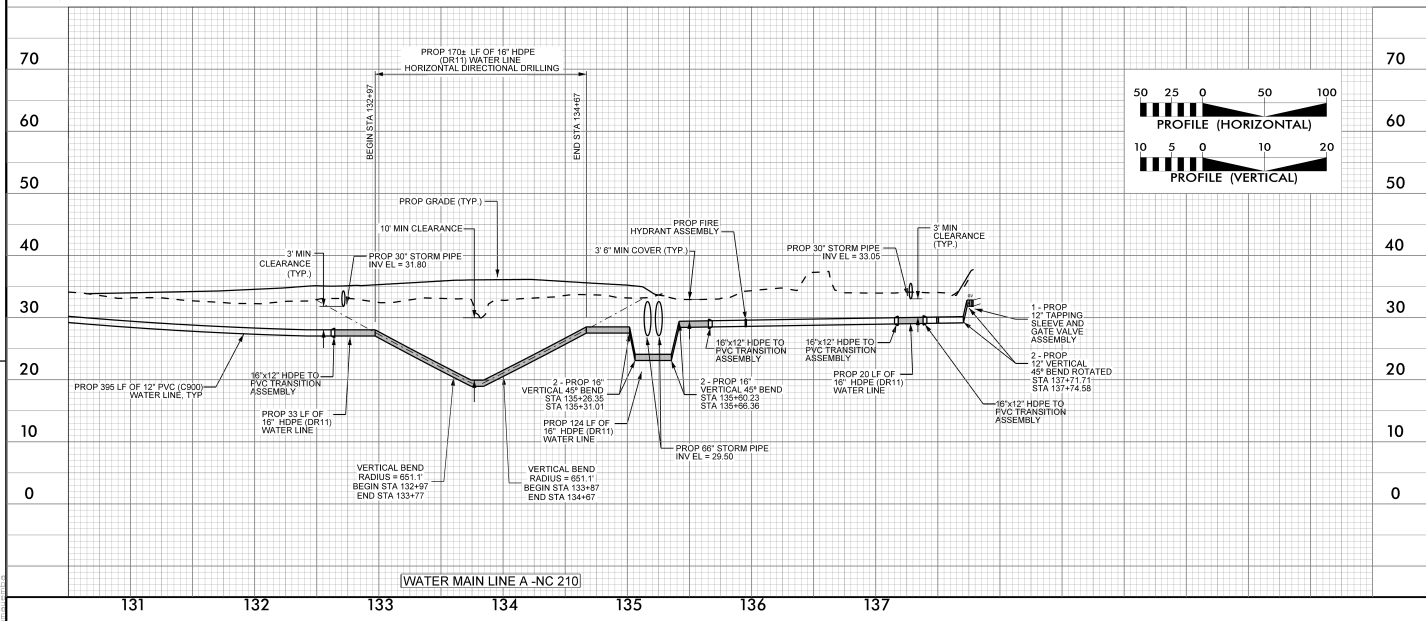
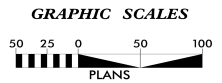
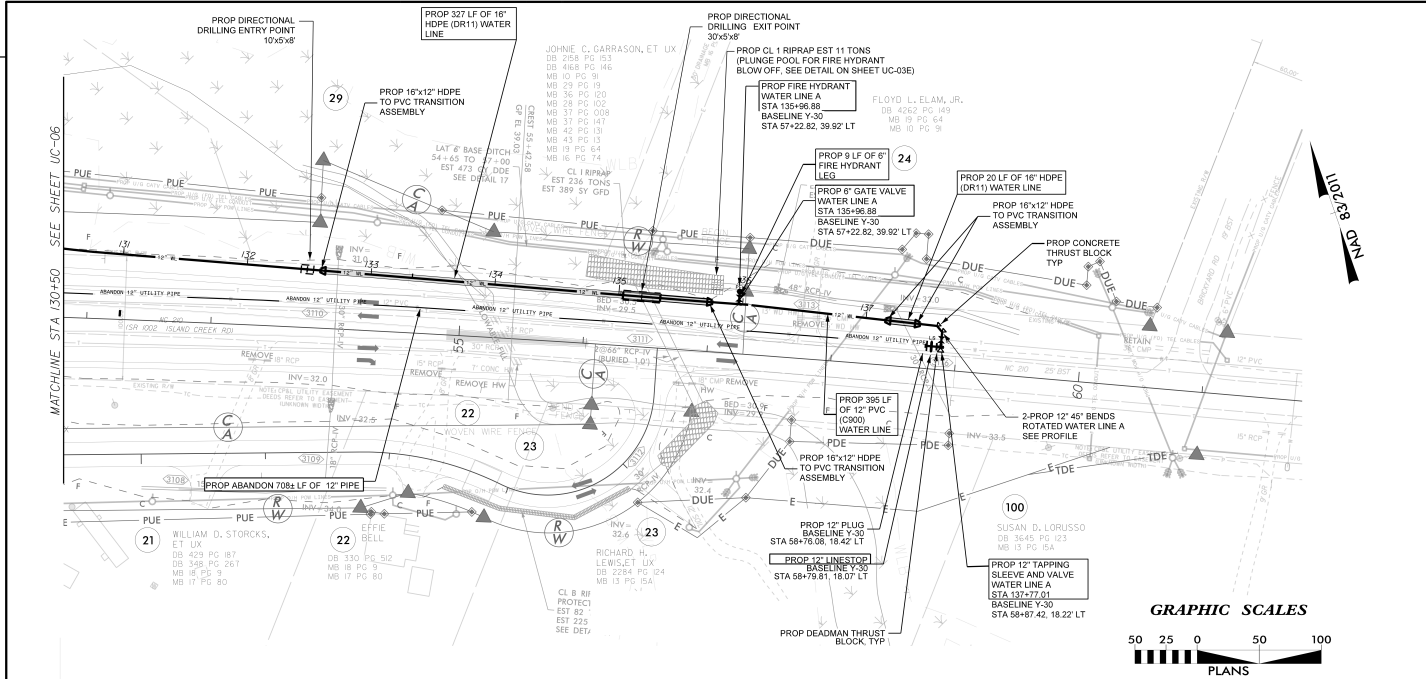
PROJECT REFERENCE NO.	SHEET NO.
R-3300B	UC-07
DESIGNED BY: RGR	
DRAWN BY: RGR	
CHECKED BY: LLP	
APPROVED BY:	
REVISED:	
NORTH CAROLINA DEPARTMENT OF TRANSPORTATION	SEAL 23500 REGISTERED PROFESSIONAL ENGINEER PLANS ONLY
UTILITIES ENGINEERING SEC. PHONE: (919) 707-6590 FAX: (919) 250-4151	UTILITY CONSTRUCTION PLANS ONLY

**DOCUMENT NOT CONSIDERED FINAL  
UNLESS ALL SIGNATURES COMPLETED**

**UTILITY CONSTRUCTION**

PROP 347 LF 16" HDPE (DR11) WATER LINE  
PROP 395 LF 12" PVC (C300) WATER LINE  
PROP ABANDON 708 LF 12" WATER LINE  
THE ESTIMATED QUANTITY OF DUCTILE IRON  
WATER PIPE FITTINGS ON THIS PLAN SHEET IS  
515 POUNDS. THE ACTUAL QUANTITY AND  
TYPE OF FITTINGS WILL VARY BASED ON FIELD  
CONDITIONS.

- NOTES:
1. MAINTAIN MINIMUM 36" COVER BELOW FINISHED GRADE FOR PIPELINES 8" AND SMALLER IN DIAMETER. MAINTAIN MINIMUM 42" COVER BELOW FINISHED GRADE FOR PIPES 10" AND LARGER IN DIAMETER AND GREATER DEPTHS OF COVER AS SHOWN ON PLANS.
  2. PROVIDE 36" MINIMUM VERTICAL CLEARANCE WHERE PROPOSED WATER CROSSES DRAINAGE SYSTEM.
  3. RELOCATE ACTIVE WATER METERS AS SHOWN ON DRAWING AND CONNECT TO NEW WATER MAIN.
  4. ABANDON WATER LINE IN LOCATIONS SHOWN, INCLUDES FITTINGS AND APPURTENANCES. ABANDONMENT OF THE WATER LINE TO BE IN ACCORDANCE WITH UTILITY OWNER'S REQUIREMENTS.
  5. ALL HDPE PIPE IS 16 INCH OUTSIDE DIAMETER AND 12.9 INCH INSIDE DIAMETER.
- TRENCHLESS INSTALLATION NOTE:  
PRIOR TO COMMENCING ANY WORK ON ANY TRENCHLESS INSTALLATION ON THIS PROJECT, PROVIDE A DESIGN FOR THE TRENCHLESS INSTALLATION CERTIFIED BY AN ENGINEER LICENSED BY THE STATE OF NORTH CAROLINA AS REQUIRED BY SUBARTICLE 1550-3(B) OF THE STANDARD SPECIFICATIONS.



REVISIONS

UC:\Projects\2016\enr\Engineering\UC\Proj\033008\A-NC 210.dgn  
 10/10/2016 10:51:07 AM

REVISIONS

05/16/2018 ena.Engineering\NCA\Proj\103300B.dwg\103300B.dgn

PROP ABANDON (BY COMPLETE REMOVAL) OF 307 LF OF 6" PVC WATER LINE  
PROP ABANDON 104 LF OF 6" PVC WATER LINE

THE ESTIMATED QUANTITY OF DUCTILE IRON WATER PIPE FITTINGS ON THIS PLAN SHEET IS 25 POUNDS. THE ACTUAL QUANTITY AND TYPE OF FITTINGS WILL VARY BASED ON FIELD CONDITIONS.

NOTES:

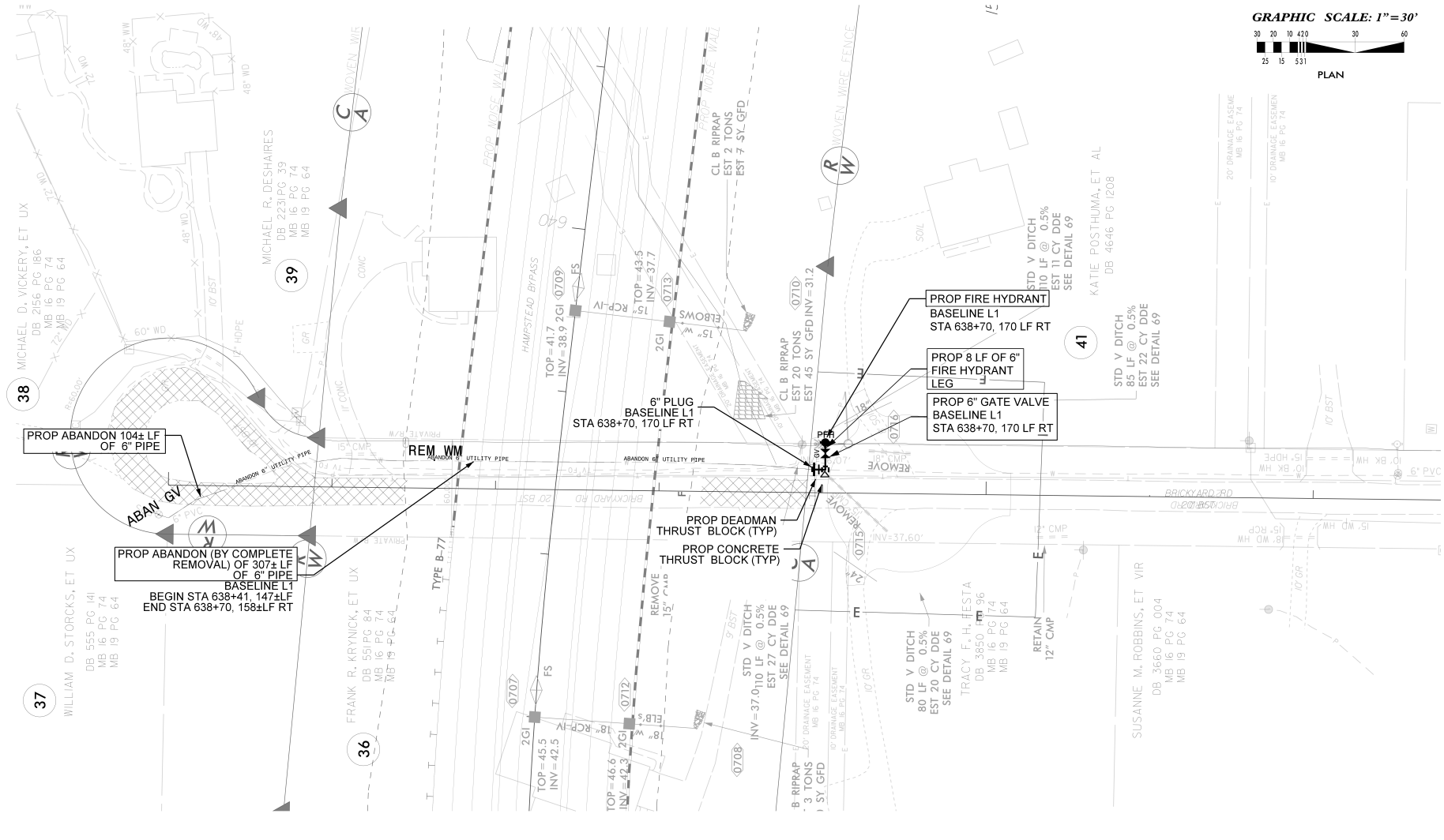
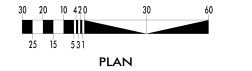
1. MAINTAIN MINIMUM 36" COVER BELOW FINISHED GRADE FOR PIPE LINES 8" AND SMALLER IN DIAMETER. MAINTAIN MINIMUM 42" COVER BELOW FINISHED GRADE FOR PIPES 10" AND LARGER IN DIAMETER AND GREATER DEPTHS OF COVER AS SHOWN ON PLANS.
2. PROVIDE 36" MINIMUM VERTICAL CLEARANCE WHERE PROPOSED WATER CROSSES DRAINAGE SYSTEM.
3. RELOCATE ACTIVE WATER METERS AS SHOWN ON DRAWING AND CONNECT TO NEW WATER MAIN.
4. ABANDON WATER LINE IN LOCATIONS SHOWN. INCLUDES FITTINGS AND APPURTENANCES. ABANDONMENT OF THE WATER LINE TO BE IN ACCORDANCE WITH UTILITY OWNER'S REQUIREMENTS.

NAD 83/2011

PROJECT REFERENCE NO. <b>R-3300B</b>		SHEET NO. <b>UC-08</b>	
DESIGNED BY: RGR			
DRAWN BY: RGR			
CHECKED BY: LLP			
APPROVED BY:			
REVISED:		NORTH CAROLINA DEPARTMENT OF TRANSPORTATION UTILITIES ENGINEERING SECTION PHONE: (919) 707-6690 FAX: (919) 250-4151	
Stantec Consulting Services Inc. 801 Jones Franklin Road Suite 300 Raleigh, NC 27606 Tel. (919) 851-6866 Fax. (919) 851-7024 www.stantec.com License No. F-0672		UTILITY CONSTRUCTION PLANS ONLY <b>DOCUMENT NOT CONSIDERED FINAL          UNLESS ALL SIGNATURES COMPLETED</b>	

UTILITY CONSTRUCTION

GRAPHIC SCALE: 1"=30'



PROP ABANDON 104± LF OF 6" PIPE

PROP ABANDON (BY COMPLETE REMOVAL) OF 307± LF OF 6" PIPE BASELINE L1 BEGIN STA 638+41, 147± LF END STA 638+70, 158± LF RT

6" PLUG BASELINE L1 STA 638+70, 170 LF RT

PROP FIRE HYDRANT BASELINE L1 STA 638+70, 170 LF RT

PROP 8 LF OF 6" FIRE HYDRANT LEG

PROP 6" GATE VALVE BASELINE L1 STA 638+70, 170 LF RT

PROP DEADMAN THRUST BLOCK (TYP)  
PROP CONCRETE THRUST BLOCK (TYP)

38 MICHAEL D. VICKERY, ET UX  
DB 2156 PG 186  
MB 16 PG 74  
MB 19 PG 64

39 MICHAEL R. DESHAIRES  
DB 2231 PG 39  
MB 16 PG 74  
MB 19 PG 64

37 WILLIAM D. STORCKS, ET UX  
DB 555 PG 141  
MB 16 PG 74  
MB 19 PG 64

36 FRANK R. KRYNICK, ET UX  
DB 551 PG 84  
MB 16 PG 74  
MB 19 PG 64

41 KATIE POSTHUMA, ET AL  
DB 4646 PG 1208

SUSANNE M. ROBBINS, ET VIR  
DB 3660 PG 004  
MB 16 PG 74  
MB 19 PG 64



5/7/14/99  
11/22/2021  
R:\Utilities\Engineering\UC\Projects\SH\TR-3300B\ut\_UC09\_psh.dgn  
Murners

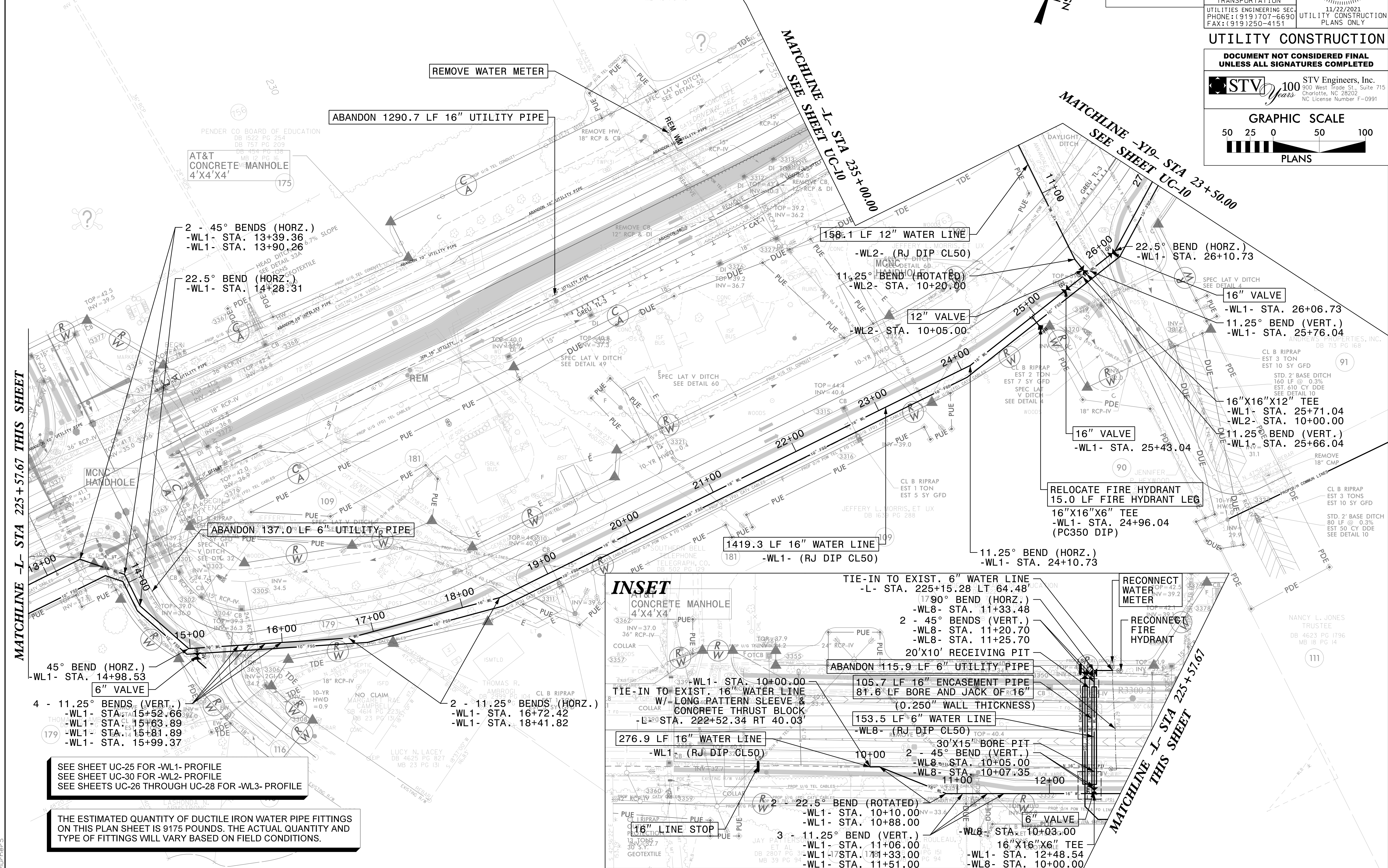
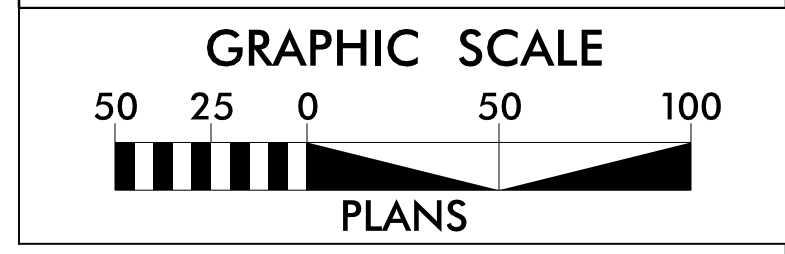
- NOTES:**
- CONTRACTOR TO REFER TO CORRESPONDING PROFILE DESIGNS FOR LIMITS OF HORIZONTAL DIRECTIONAL DRILL INSTALLATION.
  - PRIOR TO COMMENCING ANY WORK ON THIS TRENCHLESS INSTALLATION ON THIS PROJECT, PROVIDE A DESIGN FOR THE TRENCHLESS INSTALLATION CERTIFIED BY AN ENGINEER LICENSED BY THE STATE OF NORTH CAROLINA, AS REQUIRED BY SUBARTICLE 1550-3(B) OF THE STANDARD SPECIFICATIONS.
  - FIELD ADJUST HDD AS NECESSARY

<p>Stantec Consulting Services Inc. 801 Jones Franklin Road Suite 300 Raleigh, NC 27606 Tel. (919) 851-6866 Fax. (919) 851-7024 www.stantec.com License No. F-0672</p>	PROJECT REFERENCE NO.	R-3300B	SHEET NO.	UC-9
	DESIGNED BY:	CTH	<p>ANDREW S. VANK ENGINEER 028221</p>	
	DRAWN BY:	CTH		
	CHECKED BY:	ASV		
	APPROVED BY:			
REVISED:				
UTILITIES ENGINEERING SEC.		11/22/2021		UTILITY CONSTRUCTION PLANS ONLY

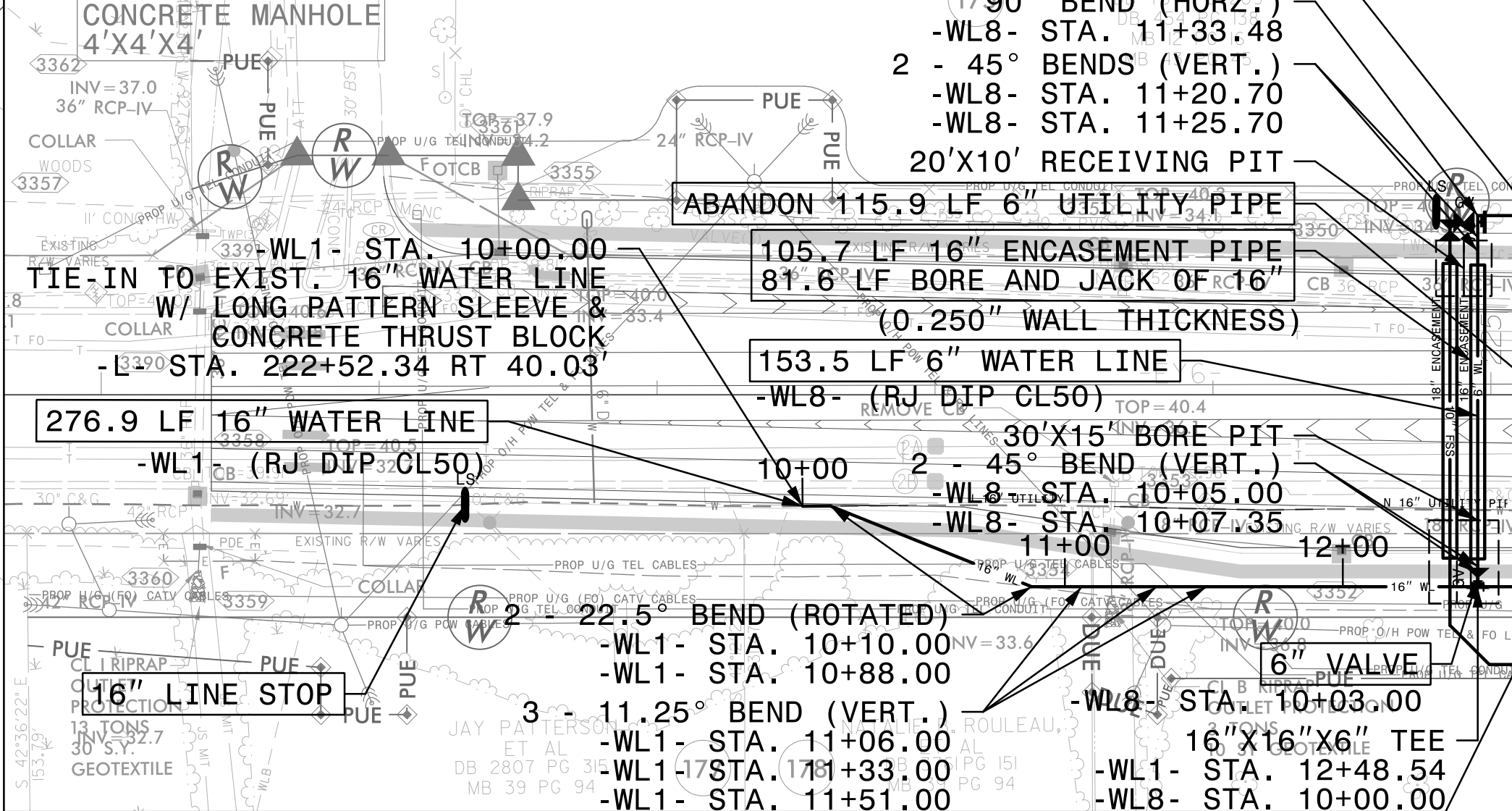
**UTILITY CONSTRUCTION**

**DOCUMENT NOT CONSIDERED FINAL UNLESS ALL SIGNATURES COMPLETED**

STV Engineers, Inc.  
300 West Trade St., Suite 715  
Charlotte, NC 28202  
NC License Number F-0991



**INSET**



SEE SHEET UC-25 FOR -WL1- PROFILE  
SEE SHEET UC-30 FOR -WL2- PROFILE  
SEE SHEETS UC-26 THROUGH UC-28 FOR -WL3- PROFILE

THE ESTIMATED QUANTITY OF DUCTILE IRON WATER PIPE FITTINGS ON THIS PLAN SHEET IS 9175 POUNDS. THE ACTUAL QUANTITY AND TYPE OF FITTINGS WILL VARY BASED ON FIELD CONDITIONS.



5/14/2019

- NOTES:**
- CONTRACTOR TO REFER TO CORRESPONDING PROFILE DESIGNS FOR LIMITS OF HORIZONTAL DIRECTIONAL DRILL INSTALLATION.
  - PRIOR TO COMMENCING ANY WORK ON THIS TRENCHLESS INSTALLATION ON THIS PROJECT, PROVIDE A DESIGN FOR THE TRENCHLESS INSTALLATION CERTIFIED BY AN ENGINEER LICENSED BY THE STATE OF NORTH CAROLINA, AS REQUIRED BY SUBARTICLE 1550-3(B) OF THE STANDARD SPECIFICATIONS.
  - FIELD ADJUST HDD AS NECESSARY

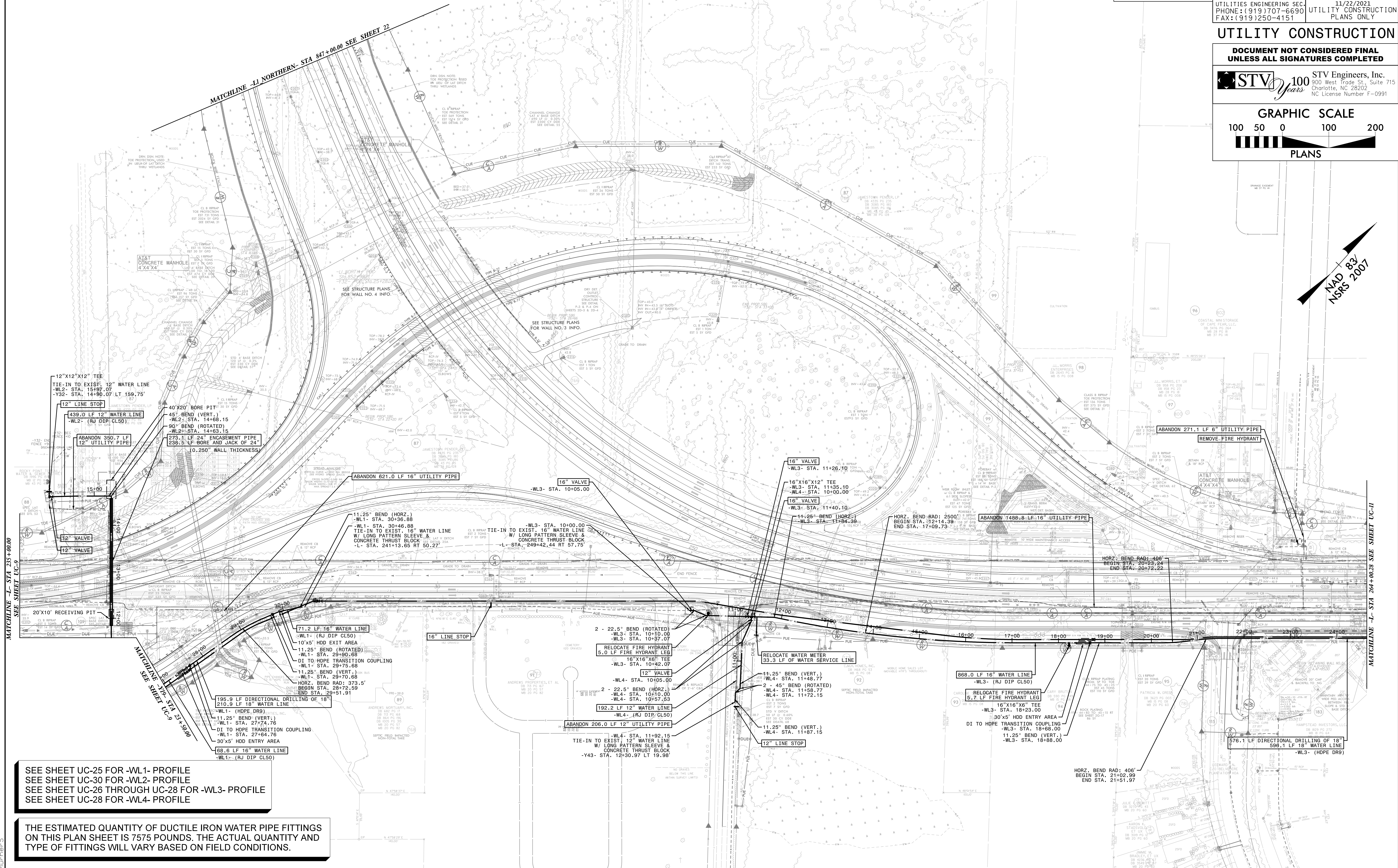
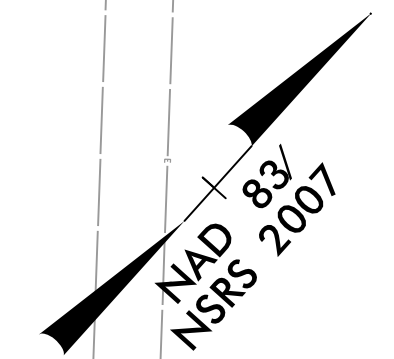
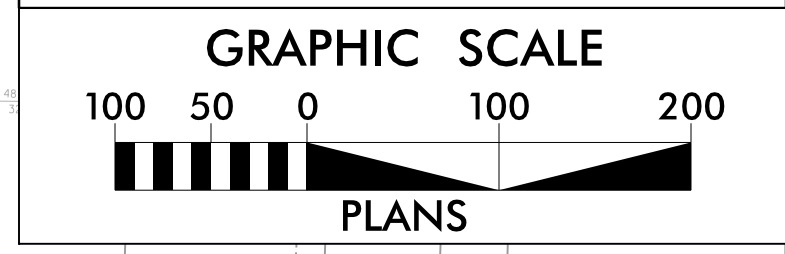
**Stantec**  
 Stantec Consulting Services Inc.  
 801 Jones Franklin Road  
 Suite 300  
 Raleigh, NC 27606  
 Tel. (919) 851-6866  
 Fax. (919) 851-7024  
 www.stantec.com  
 License No. F-0672

PROJECT REFERENCE NO.	R-3300B	SHEET NO.	UC-10
DESIGNED BY:	CTH		
DRAWN BY:	CTH		
CHECKED BY:	ASV		
APPROVED BY:			
REVISED:		NORTH CAROLINA DEPARTMENT OF TRANSPORTATION	11/22/2021
UTILITIES ENGINEERING SEC. PHONE: (919) 707-6690 FAX: (919) 250-4151		UTILITY CONSTRUCTION PLANS ONLY	

**UTILITY CONSTRUCTION**

**DOCUMENT NOT CONSIDERED FINAL UNLESS ALL SIGNATURES COMPLETED**

**STV 100 Years** STV Engineers, Inc.  
 300 West Trade St., Suite 715  
 Charlotte, NC 28202  
 NC License Number F-0991



SEE SHEET UC-25 FOR -WL1- PROFILE  
 SEE SHEET UC-30 FOR -WL2- PROFILE  
 SEE SHEET UC-26 THROUGH UC-28 FOR -WL3- PROFILE  
 SEE SHEET UC-28 FOR -WL4- PROFILE

THE ESTIMATED QUANTITY OF DUCTILE IRON WATER PIPE FITTINGS ON THIS PLAN SHEET IS 7575 POUNDS. THE ACTUAL QUANTITY AND TYPE OF FITTINGS WILL VARY BASED ON FIELD CONDITIONS.

11/22/2021  
 R:\Utilities\Engineering\UC\Proj\SH\N-R-3300B\UC-10.psd.dgn  
 Murners

MATCHLINE -L- STA 264+00.28 SEE SHEET UC-11

MATCHLINE -L- STA 235+00.00 SEE SHEET UC-9

MATCHLINE -L- STA 233+50.00 SEE SHEET UC-9



5/14/99

**NOTES:**

1. CONTRACTOR TO REFER TO CORRESPONDING PROFILE DESIGNS FOR LIMITS OF HORIZONTAL DIRECTIONAL DRILL INSTALLATION.
2. PRIOR TO COMMENCING ANY WORK ON THIS TRENCHLESS INSTALLATION ON THIS PROJECT, PROVIDE A DESIGN FOR THE TRENCHLESS INSTALLATION CERTIFIED BY AN ENGINEER LICENSED BY THE STATE OF NORTH CAROLINA, AS REQUIRED BY SUBARTICLE 1550-3(B) OF THE STANDARD SPECIFICATIONS.
3. FIELD ADJUST HDD AS NECESSARY

STATE OF NORTH CAROLINA  
 DB 4645 PG 2490  
 DB 4306 PG 107  
 DB 720 PG 180  
 DB 2290 PG 309  
 MB 58 PG 67  
 MB 28 PG 18  
 MB 28 PG 31  
 MB 28 PG 32  
 MB 52 PG 55  
 MB 37 PG 141

STATE OF NORTH CAROLINA  
 DB 4645 PG 2490  
 DB 4306 PG 107  
 DB 720 PG 180  
 DB 2290 PG 309  
 MB 58 PG 67  
 MB 28 PG 18  
 MB 28 PG 31  
 MB 28 PG 32  
 MB 52 PG 55  
 MB 37 PG 141

STATE OF NORTH CAROLINA  
 DB 4645 PG 2490  
 DB 4306 PG 107  
 DB 720 PG 180  
 DB 2290 PG 309  
 MB 58 PG 67  
 MB 28 PG 18  
 MB 28 PG 31  
 MB 28 PG 32  
 MB 52 PG 55  
 MB 37 PG 141



Stantec Consulting Services Inc.  
 801 Jones Franklin Road  
 Suite 300  
 Raleigh, NC 27606  
 Tel. (919) 851-6866  
 Fax. (919) 851-7024  
 www.stantec.com  
 License No. F-0672

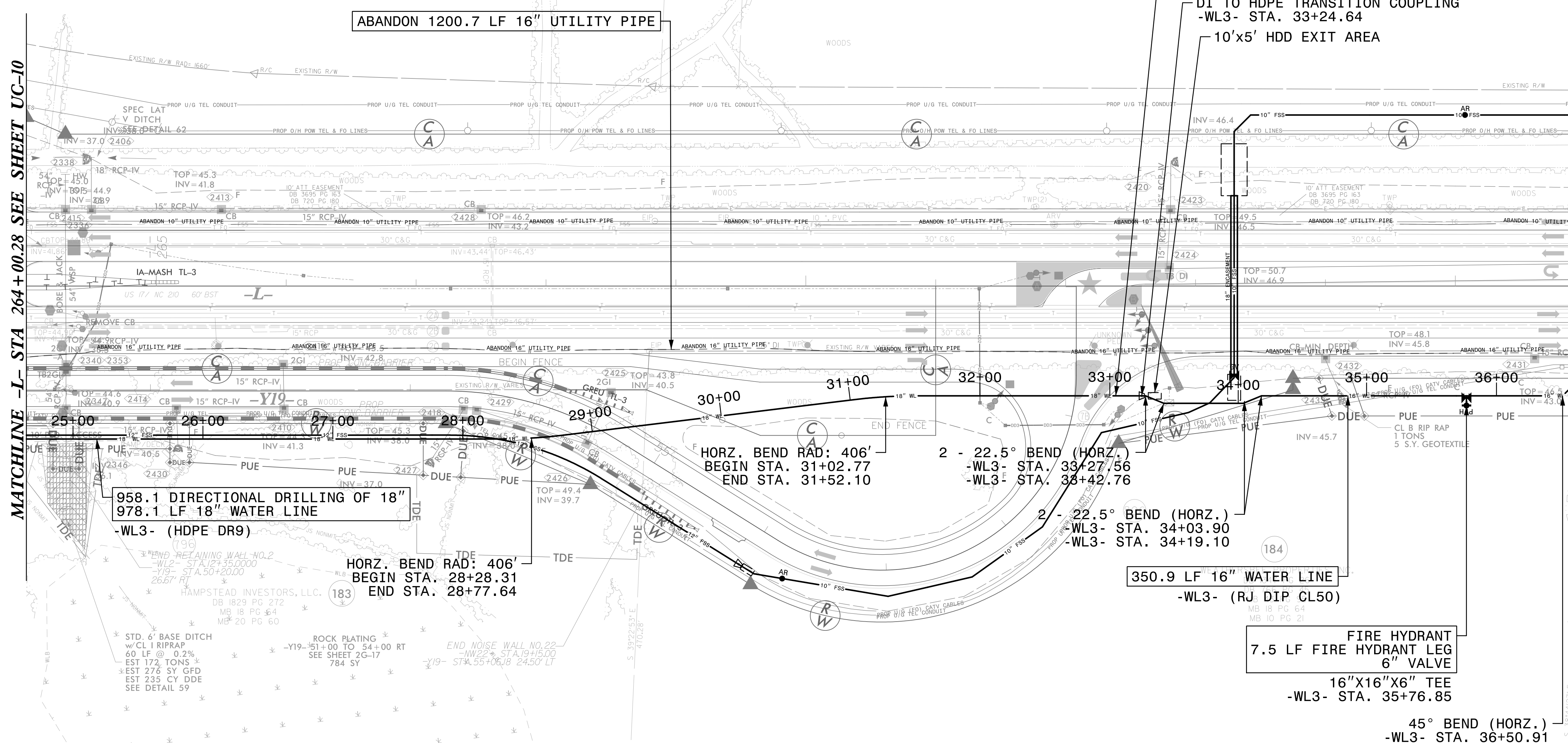
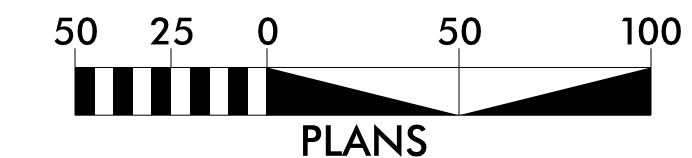
PROJECT REFERENCE NO. <b>R-3300B</b>	SHEET NO. <b>UC-11</b>
DESIGNED BY: <b>CTH</b>	
DRAWN BY: <b>CTH</b>	
CHECKED BY: <b>ASV</b>	
APPROVED BY:	
REVISED:	NORTH CAROLINA DEPARTMENT OF TRANSPORTATION
UTILITIES ENGINEERING SEC. PHONE: (919) 707-6690 FAX: (919) 250-4151	11/22/2021 UTILITY CONSTRUCTION PLANS ONLY

**UTILITY CONSTRUCTION**

**DOCUMENT NOT CONSIDERED FINAL  
UNLESS ALL SIGNATURES COMPLETED**

STV Engineers, Inc.  
 900 West Trade St., Suite 715  
 Charlotte, NC 28202  
 NC License Number F-0991

**GRAPHIC SCALE**



MATCHLINE -L- STA 264+00.28 SEE SHEET UC-10

MATCHLINE -L- STA 276+00.00 SEE SHEET UC-12

SEE SHEETS UC-26 THROUGH UC-28 FOR -WL3- PROFILE

THE ESTIMATED QUANTITY OF DUCTILE IRON WATER PIPE FITTINGS ON THIS PLAN SHEET IS 2690 POUNDS. THE ACTUAL QUANTITY AND TYPE OF FITTINGS WILL VARY BASED ON FIELD CONDITIONS.

11/22/2021  
F:\Utilities\Engineering\N\C\Projects\N\SH\N\R-3300B\ut\_UC11.psd.dgn  
Murner