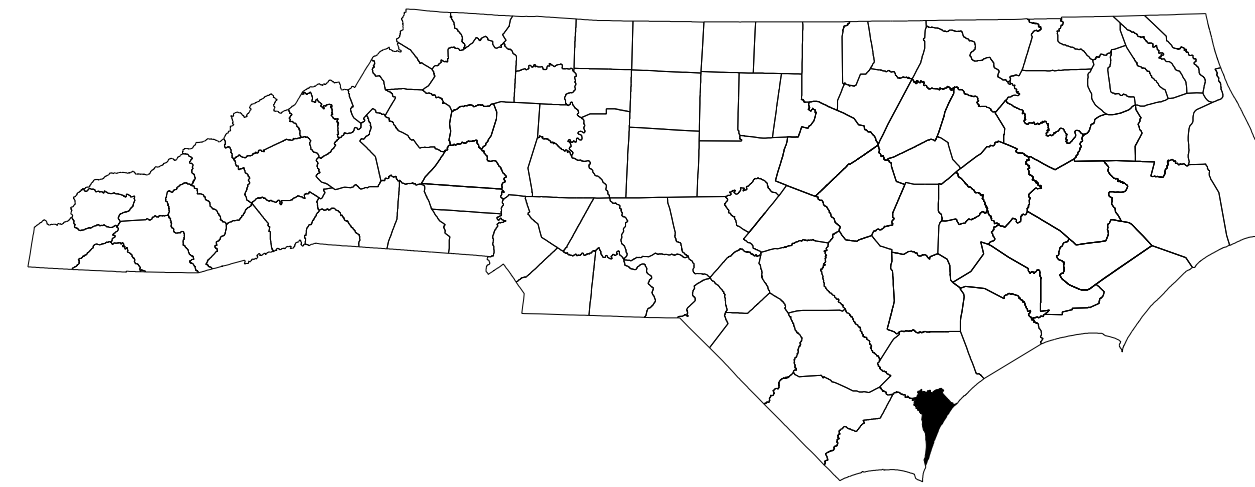
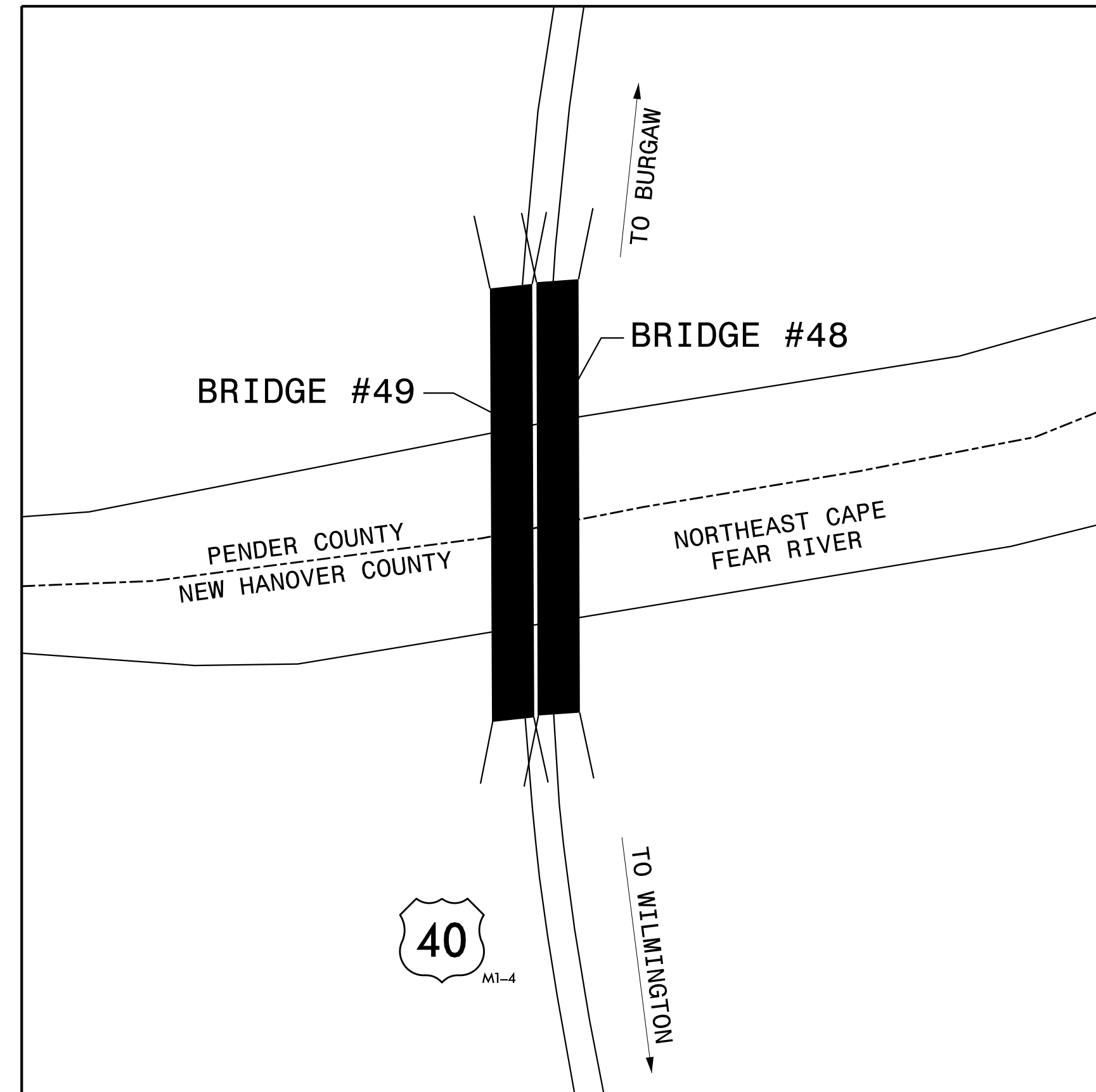


STATE OF NORTH CAROLINA
DIVISION OF HIGHWAYS

TRANSPORTATION MANAGEMENT PLAN
NEW HANOVER /PENDER COUNTY



LOCATION: BRIDGE #48 ON I-40 WBL OVER NORTHEAST CAPE FEAR RIVER.
BRIDGE #49 ON I-40 EBL OVER NORTHEAST CAPE FEAR RIVER.



VICINITY MAP

INDEX OF SHEETS	
SHEET NO.	TITLE
TMP-1	TITLE SHEET, VICINITY MAP, AND INDEX OF SHEETS
TMP-1A	LIST OF APPLICABLE ROADWAY STANDARD DRAWINGS AND LEGEND
TMP-1B - 1C	TRANSPORTATION OPERATIONS PLAN: (MANAGEMENT STRATEGIES AND GENERAL NOTES)
TMP-2	WORK ZONE VARIABLE SPEED LIMIT USING DIGITAL SPEED LIMIT SIGNS
TMP-3	TEMPORARY TRAFFIC CONTROL PHASING
TMP-4 - 6	TEMPORARY TRAFFIC CONTROL BRIDGE # 48 RIGHT/LEFT LANE CLOSURE
TMP-7	TEMPORARY TRAFFIC CONTROL BRIDGE # 48 LEFT LANE CLOSURE
TMP-8	TEMPORARY TRAFFIC CONTROL BRIDGE # 48 RIGHT LANE CLOSURE

SHEET NO.
TMP-1

15BPR.26

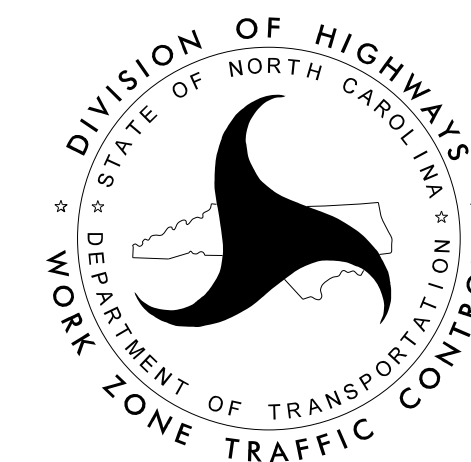
TIP PROJECT:

PLANS PREPARED BY:

NCDOT CONTACTS:

PROJECT ENGINEER

PROJECT DESIGN ENGINEER



DOCUMENT NOT CONSIDERED FINAL
UNLESS ALL SIGNATURES COMPLETED

APPROVED: *Levi D. Stoucho, PE*

DATE: 8/16/2019

SEAL



PLANS PREPARED FOR THE NCDOT BY:

M M
MOTT
MACDONALD
PO Box 700
Fuquay-Varina, NC 27526
(919) 552-2253
(919) 552-2254 (Fax)
www.mottmac.com/americas
LICENSE NO. F-0669

8/16/2019 8:40:19 AM G:\401998_SEA_NCDOT_2017_SMUX-Proj\15BPR.26\TrafficControl\15BPR.26_TC_TMP_01_Title.dgn User:BOY89356

PLANS PREPARED FOR THE NCDOT BY:

M PO Box 700
Fuquay-Varina, NC 27526
(919) 552-2253
(919) 552-2254 (Fax)
www.mottmac.com/americas
M
MOTT
MACDONALD
LICENSE NO. F-0669

ROADWAY STANDARD DRAWINGS

THE FOLLOWING ROADWAY STANDARDS AS SHOWN IN "ROADWAY STANDARD DRAWINGS" - N.C. DEPARTMENT OF TRANSPORTATION - RALEIGH, N.C., DATED JANUARY 2018 ARE APPLICABLE TO THIS PROJECT AND BY REFERENCE HEREBY ARE CONSIDERED A PART OF THESE PLANS:

STD. NO.	TITLE
1101.01	WORK ZONE ADVANCE WARNING SIGNS
1101.02	TEMPORARY LANE CLOSURES
1101.03	TEMPORARY ROAD CLOSURES
1101.04	TEMPORARY SHOULDER CLOSURES
1101.05	WORK ZONE VEHICLE ACCESSES
1101.06	WARNING SIGNS FOR BLASTING ZONES
1101.11	TRAFFIC CONTROL DESIGN TABLES
1110.01	STATIONARY WORK ZONE SIGNS
1110.02	PORTABLE WORK ZONE SIGNS
1115.01	FLASHING ARROW BOARDS
1130.01	DRUMS
1135.01	CONES
1145.01	BARRICADES
1150.01	FLAGGERS
1160.01	TEMPORARY CRASH CUSHION
1165.01	TRUCK MOUNTED ATTENUATOR
1170.01	PORTABLE CONCRETE BARRIER
1180.01	SKINNY-DRUMS
1205.01	PAVEMENT MARKINGS - LINE TYPES AND OFFSETS
1205.02	PAVEMENT MARKINGS - TWO-LANE AND MULTI-LANE ROADWAYS
1205.03	PAVEMENT MARKINGS - EXITS AND ENTRANCE RAMPS
1205.04	PAVEMENT MARKINGS - INTERSECTIONS
1205.05	PAVEMENT MARKINGS - TURN LANES
1205.06	PAVEMENT MARKINGS - LANE DROPS
1205.07	PAVEMENT MARKINGS - PEDESTRIAN CROSSWALKS
1205.08	PAVEMENT MARKINGS - SYMBOLS AND WORD MESSAGES
1205.09	PAVEMENT MARKINGS - PAINTED ISLANDS
1205.10	PAVEMENT MARKINGS - SCHOOL AREAS
1205.11	PAVEMENT MARKINGS - RAILROAD CROSSINGS
1205.12	PAVEMENT MARKINGS - BRIDGES
1205.13	PAVEMENT MARKINGS - LANE REDUCTIONS
1205.14	PAVEMENT MARKINGS - ROUNDABOUTS
1205.15	PAVEMENT MARKINGS - SUPERSTREETS
1250.01	RAISED PAVEMENT MARKERS - INSTALLATION SPACING
1251.01	RAISED PAVEMENT MARKERS - PERMANENT AND TEMPORARY
1253.01	RAISED PAVEMENT MARKERS - SNOWPLOWABLE
1261.01	GUARDRAIL AND BARRIER DELINEATORS - INSTALLATION SPACING
1261.02	GUARDRAIL AND BARRIER DELINEATORS - TYPES AND MOUNTING
1262.01	GUARDRAIL END DELINEATION
1264.01	OBJECT MARKERS - TYPES
1264.02	OBJECT MARKERS - INSTALLATION
1266.01	RAISED PAVEMENT MARKERS - TUBULAR MARKERS
1267.01	FLEXIBLE DELINEATORS - INSTALLATION
1267.02	FLEXIBLE DELINEATORS - SPACING TABLES
1267.03	FLEXIBLE DELINEATORS - INTERCHANGE PLACEMENT

LEGEND

GENERAL

- DIRECTION OF TRAFFIC FLOW
- DIRECTION OF PEDESTRIAN TRAFFIC FLOW
- EXIST. PVMT.
- NORTH ARROW
- PROPOSED PVMT.
- TEMP. SHORING (LOCATION PURPOSES ONLY)

- WORK AREA
- REMOVAL
- USER DEFINED (IF NEEDED)
- USER DEFINED (IF NEEDED)

SIGNALS

- EXISTING
- PROPOSED
- TEMPORARY

PAVEMENT MARKINGS

- EXISTING LINES
- TEMPORARY LINES

TRAFFIC CONTROL DEVICES

- BARRICADE (TYPE III)
- CONE
- DRUM SKINNY DRUM TUBULAR MARKER
- TEMPORARY CRASH CUSHION
- FLASHING ARROW BOARD
- FLAGGER
- LAW ENFORCEMENT
- TRUCK MOUNTED ATTENUATOR (TMA)
- CHANGEABLE MESSAGE SIGN
- FLASHING ARROW BOARD (96"X48" MIN.), "CAUTION MODE"
- DIGITAL SPEED LIMIT SIGN

TEMPORARY SIGNING

- PORTABLE SIGN
- STATIONARY SIGN
- STATIONARY OR PORTABLE SIGN

PAVEMENT MARKERS

- CRYSTAL/CRYSTAL
- CRYSTAL/RED
- YELLOW/YELLOW

PAVEMENT MARKING SYMBOLS

- PAVEMENT MARKING SYMBOLS

TEMPORARY PAVEMENT MARKING

- COLD APPLIED PLASTIC (TYPE 4) 6"
- C6 WHITE EDGELINE
- C7 YELLOW EDGELINE
- CJ 10 FR. WHITE SKIP

8/16/2019 8:40:58 AM SEA_NCDOT_2017_5MU\Pro\15BPR\26\TrafficControl\15BPR\26_TC_TMP_01A.dgn User:BOY89356

APPROVED: <u>Lois D. Stoucho, PE</u> DATE: 8/16/2019			ROADWAY STANDARD DRAWINGS & LEGEND
DOCUMENT NOT CONSIDERED FINAL UNLESS ALL SIGNATURES COMPLETED			

MANAGEMENT STRATEGIES

PRESERVATION AND REPAIR OF BRIDGE #48 AND BRIDGE #49 ON I-40 OVER THE NORTHEAST CAPE FEAR RIVER.

THE WORK WILL BE PERFORMED USING TEMPORARY LANE CLOSURES WITH SEASONAL, PEAK HOUR, HOLIDAY, AND SPECIAL EVENT RESTRICTIONS.

DETAIL DRAWINGS ARE PROVIDED FOR THE I-40 WEST BOUND LANE CLOSURES. THE I-40 EAST BOUND LANE CLOSURES WILL BE INSTALLED USING ROADWAY STANDARD DRAWINGS.

SEQUENTIAL FLASHING WARNING LIGHTS WILL BE INSTALLED ON DRUMS USED FOR MERGING TAPERS DURING NIGHTLY WORK ACTIVITIES.

A WORK ZONE VARIABLE SPEED LIMIT WILL BE IMPLEMENTED USING DIGITAL SPEED LIMIT SIGNS. THESE SIGNS ARE REGULATORY SPEED LIMIT SIGNS WITH LED DISPLAYS FOR THE SPEED LIMIT NUMBERS. THE SPEED LIMITS DISPLAYED WITHIN THE ACTIVE WORK AREA MAY VARY BETWEEN 55 MPH AND 70 MPH. 55 MPH IS ONLY DISPLAYED DURING ACTIVE LANE CLOSURE OPERATIONS.

GENERAL NOTES

CHANGES MAY BE REQUIRED WHEN PHYSICAL DIMENSIONS IN THE DETAIL DRAWINGS, STANDARD DETAILS, AND ROADWAY DETAILS ARE NOT ATTAINABLE TO MEET FIELD CONDITIONS OR RESULT IN DUPLICATE OR UNDESIRED OVERLAPPING OF DEVICES. MODIFICATION MAY INCLUDE: MOVING, SUPPLEMENTING, COVERING, OR REMOVAL OF DEVICES AS DIRECTED BY THE ENGINEER.

THE FOLLOWING GENERAL NOTES APPLY AT ALL TIMES FOR THE DURATION OF THE CONSTRUCTION PROJECT EXCEPT WHEN OTHERWISE NOTED IN THE PLAN OR DIRECTED BY THE ENGINEER.

A) DO NOT CLOSE OR NARROW TRAVEL LANES AS FOLLOWS:

ROAD NAME	DAY AND TIME RESTRICTIONS
I-40	MONDAY THRU THURSDAY 7:00 AM TO 8:30 AM AND 4:30 PM TO 6:30 PM FRIDAY 7:00 AM TO 8:30 AM AND 3:00 PM TO 6:30 PM

B) DO NOT CLOSE OR NARROW TRAVEL LANES DURING HOLIDAYS AND SPECIAL EVENTS AS FOLLOWS:

ROAD NAME	HOLIDAY
I-40	<ol style="list-style-type: none"> FOR ANY UNEXPECTED OCCURRENCE THAT CREATES UNUSUALLY HIGH TRAFFIC VOLUMES, AS DIRECTED BY THE ENGINEER. FOR NEW YEAR'S, BETWEEN THE HOURS OF 7:00 AM DECEMBER 31st TO 6:30 PM JANUARY 2ND. IF NEW YEAR'S DAY IS ON A FRIDAY, SATURDAY, SUNDAY, OR MONDAY THEN UNTIL 6:30 PM THE FOLLOWING TUESDAY. FOR EASTER, BETWEEN THE HOURS OF 7:00 AM THURSDAY AND 6:30 PM MONDAY. FOR MEMORIAL DAY, BETWEEN THE HOURS OF 7:00 AM FRIDAY TO 6:30 PM TUESDAY. FOR INDEPENDENCE DAY, BETWEEN THE HOURS OF 7:00 AM THE DAY BEFORE INDEPENDENCE DAY AND 6:30 PM THE DAY AFTER INDEPENDENCE DAY. IF INDEPENDENCE DAY IS ON A FRIDAY, SATURDAY, SUNDAY OR MONDAY THEN BETWEEN THE HOURS OF 7:00 AM THE THURSDAY BEFORE INDEPENDENCE DAY AND 6:30 PM THE TUESDAY AFTER INDEPENDENCE DAY. FOR LABOR DAY, BETWEEN THE HOURS OF 7:00 AM FRIDAY AND 6:30 PM TUESDAY. FOR THANKSGIVING DAY, BETWEEN THE HOURS OF 7:00 AM TUESDAY TO 6:30 PM MONDAY. FOR CHRISTMAS, BETWEEN THE HOURS OF 7:00 AM THE FRIDAY BEFORE THE WEEK OF CHRISTMAS DAY AND 6:30 PM THE FOLLOWING TUESDAY AFTER THE WEEK OF CHRISTMAS.

9. FOR THE WILMINGTON AZALEA FESTIVAL, BETWEEN THE HOURS OF 7:00 AM THE TUESDAY OF THE WEEK OF THE WILMINGTON AZALEA FESTIVAL AND 6:30 PM THE FOLLOWING MONDAY AFTER THE WILMINGTON AZALEA FESTIVAL.

10. FOR THE NORTH CAROLINA BLUEBERRY FESTIVAL, BETWEEN THE HOURS OF 7:00 AM THE WEDNESDAY OF THE WEEK OF THE NORTH CAROLINA BLUEBERRY FESTIVAL AND 6:30 PM THE FOLLOWING MONDAY AFTER THE NORTH CAROLINA BLUEBERRY FESTIVAL.

11. FOR THE UNIVERSITY OF NORTH CAROLINA AT WILMINGTON FRESHMAN MOVE-IN WEEKEND, BETWEEN THE HOURS OF 7:00 AM THE FRIDAY OF THE WEEK OF THE UNIVERSITY OF NORTH CAROLINA AT WILMINGTON FRESHMAN MOVE-IN WEEKEND AND 6:30 PM THE MONDAY AFTER THE UNIVERSITY OF NORTH CAROLINA AT WILMINGTON FRESHMAN MOVE-IN WEEKEND

12. FOR THE WILMINGTON RIVERFEST, BETWEEN THE HOURS OF 7:00 AM THE THURSDAY OF THE WEEK OF THE WILMINGTON RIVERFEST AND 6:30 PM THE MONDAY AFTER THE WILMINGTON RIVERFEST.

13. FOR THE IRONMAN 70.3 NORTH CAROLINA TRIATHLON, BETWEEN THE HOURS OF 7:00 AM THE WEDNESDAY OF THE WEEK OF THE IRONMAN 70.3 NORTH CAROLINA TRIATHLON AND 6:30 PM THE MONDAY AFTER THE IRONMAN 70.3 NORTH CAROLINA TRIATHLON.

C) DO NOT CONDUCT ANY HAULING OPERATIONS AGAINST THE FLOW OF TRAFFIC OF AN OPEN TRAVELWAY UNLESS THE HAULING OPERATION IS PROTECTED BY BARRIER OR GUARDRAIL OR AS DIRECTED BY THE ENGINEER.

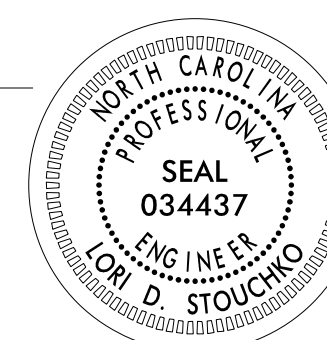

LANE AND SHOULDER CLOSURE REQUIREMENTS

D) REMOVE LANE CLOSURE DEVICES FROM THE LANE WHEN WORK IS NOT BEING PERFORMED BEHIND THE LANE CLOSURE OR WHEN A LANE CLOSURE IS NO LONGER NEEDED OR AS DIRECTED BY THE ENGINEER.

E) WHEN PERSONNEL AND/OR EQUIPMENT ARE WORKING WITHIN 15 FT OF AN OPEN TRAVEL LANE, CLOSE THE NEAREST OPEN SHOULDER USING ROADWAY STANDARD DRAWING NO. 1101.04 UNLESS THE WORK AREA IS PROTECTED BY BARRIER OR GUARDRAIL OR A LANE CLOSURE IS INSTALLED.

F) WHEN PERSONNEL AND/OR EQUIPMENT ARE WORKING ON THE SHOULDER ADJACENT TO AN UNDIVIDED FACILITY AND WITHIN 5 FT OF AN OPEN TRAVEL LANE, CLOSE THE NEAREST OPEN TRAVEL LANE USING ROADWAY STANDARD DRAWING NO. 1101.02 UNLESS THE WORK AREA IS PROTECTED BY BARRIER OR GUARDRAIL.

WHEN PERSONNEL AND/OR EQUIPMENT ARE WORKING ON THE SHOULDER ADJACENT TO A DIVIDED FACILITY AND WITHIN 10 FT OF AN OPEN TRAVEL LANE, CLOSE THE NEAREST OPEN TRAVEL LANE USING ROADWAY STANDARD DRAWING NO. 1101.02 UNLESS THE WORK AREA IS PROTECTED BY BARRIER OR GUARDRAIL.

APPROVED: _____ DATE: _____			<h3>TRANSPORTATION OPERATIONS PLAN</h3>
DOCUMENT NOT CONSIDERED FINAL UNLESS ALL SIGNATURES COMPLETED			

12/10/2021
 \\USF\UQUHV\FPS01\Proj\401998_SEA_NCDOT_2017_SMU\Proj\15BPR.26\Traffic\TrafficContr\CP\15BPR.26_TC_TMP_OIB_GeneralNotes.dgn
 User: HBS82185

PROJ. REFERENCE NO.	SHEET NO.
15BPR.26	TMP-1C

PLANS PREPARED FOR THE NCDOT BY:

M M
MOTT MACDONALD
 PO Box 700
 Fuquay-Varina, NC 27526
 (919) 552-2253
 (919) 552-2254 (Fax)
 www.mottmac.com/americas
 LICENSE NO. F-0669

G) WHEN PERSONNEL AND/OR EQUIPMENT ARE WORKING WITHIN A LANE OF TRAVEL OF AN UNDIVIDED OR DIVIDED FACILITY, CLOSE THE LANE ACCORDING TO THE TRAFFIC CONTROL PLANS, ROADWAY STANDARD DRAWINGS, OR AS DIRECTED BY THE ENGINEER. CONDUCT THE WORK SO THAT ALL PERSONNEL AND/OR EQUIPMENT REMAIN WITHIN THE CLOSED TRAVEL LANE.

H) DO NOT WORK SIMULTANEOUSLY WITHIN 15 FT ON BOTH SIDES OF AN OPEN TRAVELWAY, RAMP, OR LOOP WITHIN THE SAME LOCATION UNLESS PROTECTED WITH GUARDRAIL OR BARRIER.

I) DO NOT INSTALL MORE THAN ONE LANE CLOSURE IN ANY ONE DIRECTION ON I-40.

PAVEMENT EDGE DROP OFF REQUIREMENTS

J) DO NOT EXCEED A DIFFERENCE OF 2 INCHES IN ELEVATION BETWEEN OPEN LANES OF TRAFFIC FOR NOMINAL LIFTS OF 1.5 INCHES. INSTALL ADVANCE WARNING "UNEVEN LANES" SIGNS (W8-11) 350 FT IN ADVANCE AND A MINIMUM OF EVERY HALF MILE THROUGHOUT THE UNEVEN AREA.

TRAFFIC PATTERN ALTERATIONS

K) NOTIFY THE ENGINEER THIRTY (30) CALENDAR DAYS PRIOR TO ANY TRAFFIC PATTERN ALTERATION.

SIGNING

L) INSTALL ADVANCE WORK ZONE WARNING SIGNS WHEN WORK IS WITHIN 40 FT FROM THE EDGE OF TRAVEL LANE AND NO MORE THAN THREE (3) DAYS PRIOR TO THE BEGINNING OF CONSTRUCTION.

M) ENSURE ALL NECESSARY SIGNING IS IN PLACE PRIOR TO ALTERING ANY TRAFFIC PATTERN.

N) INSTALL BLACK ON ORANGE "DIP" SIGNS (W8-2) AND/OR "BUMP" SIGNS (W8-1) 1000 FT IN ADVANCE OF THE UNEVEN AREA, OR AS DIRECTED BY THE ENGINEER.

TRAFFIC CONTROL DEVICES

O) WHEN LANE CLOSURES ARE NOT IN EFFECT SPACE CHANNELIZING DEVICES IN WORK AREAS NO GREATER IN FEET THAN TWICE THE POSTED SPEED LIMIT (MPH) EXCEPT, 10 FT ON-CENTER IN RADII, AND 3 FT OFF THE EDGE OF AN OPEN TRAVELWAY. REFER TO STANDARD SPECIFICATIONS FOR ROADS AND STRUCTURES SECTIONS 1130 (DRUMS), 1135 (CONES) AND 1180 (SKINNY DRUMS) FOR ADDITIONAL REQUIREMENTS.

P) PLACE ADDITIONAL SETS OF THREE CHANNELIZING DEVICES DRUMS PERPENDICULAR TO THE EDGE OF TRAVELWAY ON 500 FT CENTERS WHEN UNOPENED LANES ARE CLOSED TO TRAFFIC.

PAVEMENT MARKINGS AND MARKERS

Q) INSTALL TEMPORARY PAVEMENT MARKINGS AND TEMPORARY PAVEMENT MARKERS ON INTERIM LAYERS OF PAVEMENT AS FOLLOWS:

ROAD NAME	MARKING	MARKER
I-40	COLD APPLIED PLASTIC (TYPE 4)	NONE

R) TIE PROPOSED PAVEMENT MARKING LINES TO EXISTING PAVEMENT MARKING LINES.

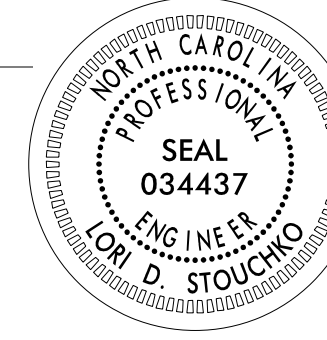
S) REMOVE/REPLACE ANY CONFLICTING/DAMAGED PAVEMENT MARKINGS AND MARKERS BY THE END OF EACH DAY'S OPERATION.

MISCELLANEOUS

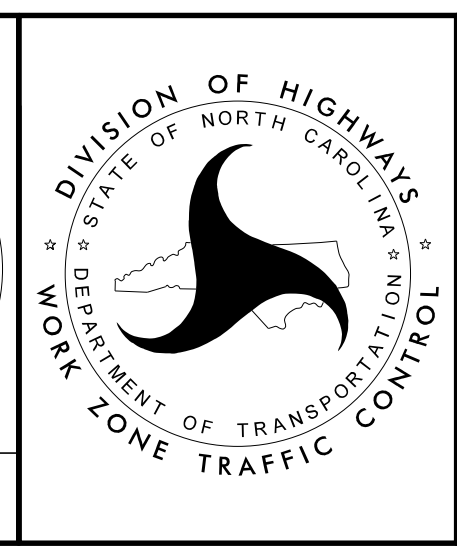
T) LAW ENFORCEMENT SHALL BE USED TO MAINTAIN TRAFFIC THROUGH THE WORK AREA AND/OR INTERSECTIONS AS DIRECTED BY THE ENGINEER.

APPROVED: Lori D. Stouchko, PE
6C933CB8742F461...

DATE: 8/16/2019

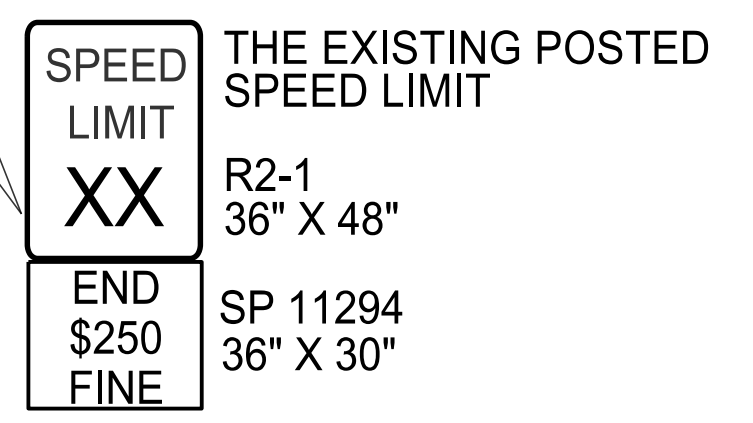
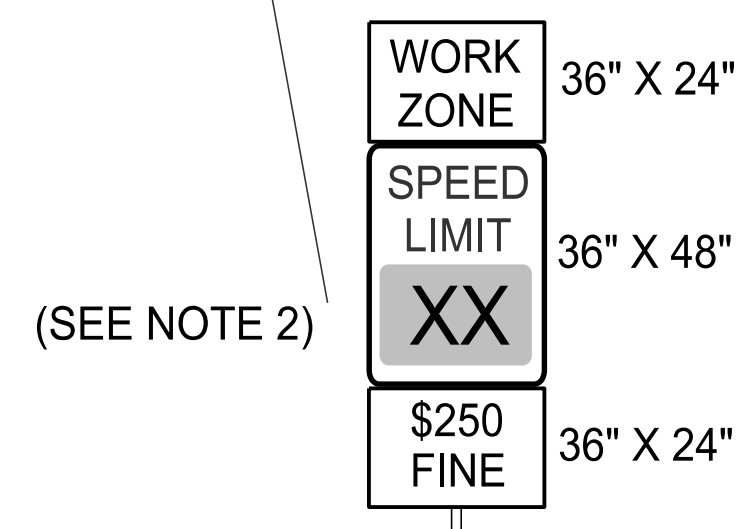
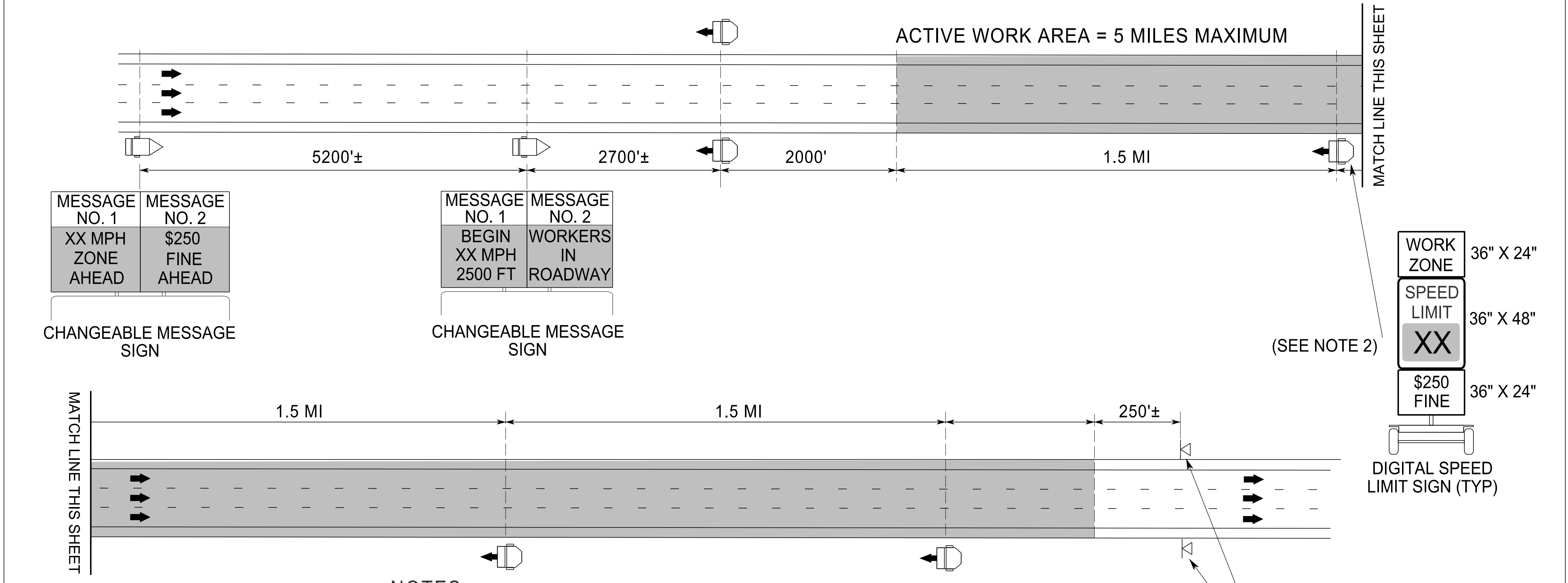


**DOCUMENT NOT CONSIDERED FINAL
 UNLESS ALL SIGNATURES COMPLETED**



TRANSPORTATION
 OPERATIONS
 PLAN

WORK ZONE VARIABLE SPEED LIMIT USING DIGITAL SPEED LIMIT SIGNS



NOTES

1. THE SPEED LIMITS DISPLAYED WITHIN THE ACTIVE WORK AREA MAY VARY BETWEEN 55 MPH AND 70 MPH, DEPENDENT UPON ROAD WORK CONDITIONS AND THE EXISTING SPEED LIMIT. 55 MPH IS ONLY DISPLAYED DURING ACTIVE LANE CLOSURE OPERATIONS.
2. AT THE FIRST DIGITAL SPEED LIMIT LOCATION, PLACE A DIGITAL SPEED LIMIT SIGN ON BOTH THE INSIDE AND OUTSIDE SHOULDERS, UNLESS DIRECTED OTHERWISE BY THE ENGINEER WHEN THERE IS NOT ENOUGH ROOM ON THE INSIDE SHOULDER DUE TO NARROW MEDIAN AND PERMANENT MEDIAN BARRIER. AT SUBSEQUENT LOCATIONS DOWNSTREAM, PLACE A SINGLE DIGITAL SPEED LIMIT SIGN ON THE OUTSIDE SHOULDER
3. THE ENGINEER MAY DETERMINE TO INSTALL THE DIGITAL SPEED LIMIT SIGNS ON THE OUTSIDE SHOULDER OR ON THE MEDIAN SIDE IF THE SIGNS ARE NOT HIGHLY VISIBLE TO ALL MOTORISTS.
4. THIS APPLICATION IS FOR SHORT-TERM ACTIVITIES. THE MAXIMUM ACTIVE WORK AREA IS 5 MILES.
5. THE DIGITAL SPEED LIMIT SIGNS TAKE PRECEDENCE OVER EXISTING SPEED LIMIT SIGNS. ALL EXISTING SPEED LIMIT SIGNS SHALL BE COVERED OR REMOVED.
6. THE DIGITAL SPEED LIMITS SIGNS WILL BE INSTALLED (TRAILER MOUNTED OR STATIONARY MOUNTED) IN ADVANCE AND SPACED APPROXIMATELY 1.5 MILES THROUGHOUT THE ACTIVE WORK AREA, UNLESS DIRECTED OTHERWISE.
7. NCDOT HAS SOLE AUTHORITY OF THE SPEED LIMITS DISPLAYED ON THE DIGITAL SPEED LIMIT SIGNS.
8. THE WORK ZONE VARIABLE SPEED LIMIT AND THE \$250 SPEEDING PENALTY ARE SEPARATE ORDINANCES THAT MUST BE SIGNED BY THE STATE TRAFFIC ENGINEER TO BE VALID AND ENFORCEABLE. WITHOUT A SIGNED ORDINANCE, THE SPEED LIMIT ON A FACILITY SHALL REMAIN UNCHANGED.

WHEN THERE IS NOT ACTIVE WORK IN THE TRAVEL LANE

SPEED LIMIT DISPLAY	CONDITIONS	
	DROP-OFFS BETWEEN OPEN TRAVEL LANES	PAVED SHOULDER DROP-OFFS
USE EXISTING SPEED LIMIT	< 1.0"	≤ 3.0"
REDUCE SPEED LIMIT 5 MPH	1.0" - 2.0"	> 3.0"

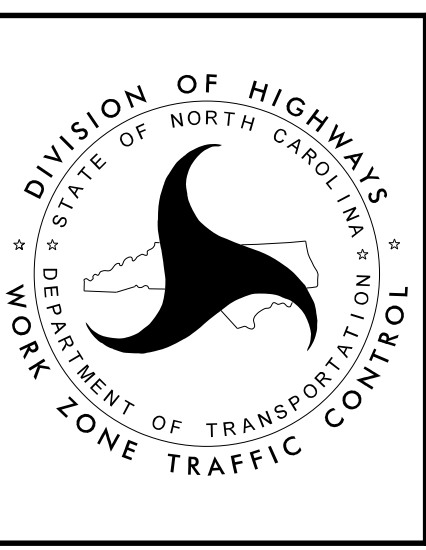
DROP-OFFS BETWEEN OPEN TRAVEL LANES SHOULD NOT EXCEED 2.0"

8/16/2019 8:40:59 AM SEA_NCDOT_2017_5MU\Proj\15BPR.26\TrafficControl\TCP\15BPR.26_TC_TMP_02.dgn User:BOY89356

APPROVED: *Lori D. Stoucho, PE*
DATE: 8/16/2019

60393CB5742F461

DOCUMENT NOT CONSIDERED FINAL UNLESS ALL SIGNATURES COMPLETED



TEMPORARY TRAFFIC CONTROL
WORK ZONE VARIABLE SPEED
LIMIT USING DIGITAL
SPEED LIMIT SIGNS

PROJ. REFERENCE NO.	SHEET NO.
15BPR.26	TMP-3

PLANS PREPARED FOR THE NCDOT BY:

M PO Box 700
Fuquay-Varina, NC 27526
(919) 552-2253
(919) 552-2254 (Fax)
www.mottmac.com/americas
MOTT
MACDONALD LICENSE NO. F-0669

PHASING

PHASE I

STEP 1: INSTALL WORK ZONE ADVANCE WARNING SIGNS ON I-40 USING RSD 1101.01, SHEET 1 OF 3

STEP 2: USING TMP-2, INSTALL VARIABLE SPEED LIMIT SIGNS ON I-40 EB.

USING TMP-4 AND TMP-6 THRU TMP-8, INSTALL VARIABLE SPEED LIMIT SIGNS ON I-40 WB.

STEP 3: USING RSD 1101.02, SHEET 4 OF 14, CLOSE LEFT/RIGHT LANE AS NEEDED OF I-40 EB FOR BRIDGE PRESERVATION WORK. REPLACE EXISTING PAVEMENT MARKINGS AS NEEDED AND OPEN ALL LANES OF I-40 EB TO TRAFFIC AT THE END OF EACH WORK PERIOD.

USING TMP-4 THRU TMP-8, CLOSE LEFT/RIGHT LANE AS NEEDED OF I-40 WB FOR BRIDGE PRESERVATION WORK. REPLACE EXISTING PAVEMENT MARKINGS AS NEEDED AND OPEN ALL LANES OF I-40 WB TO TRAFFIC AT THE END OF EACH WORK PERIOD.


PHASE II

STEP 1: USING RSD 1101.02, SHEET 13 OF 14 PLACE FINAL PAVEMENT MARKINGS AND MARKERS AND OPEN ALL LANES TO TRAFFIC.

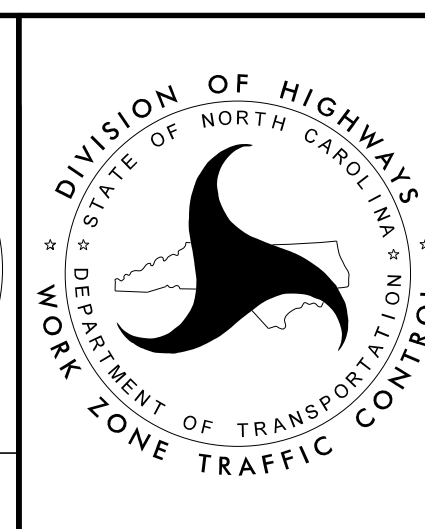
STEP 2: REMOVE ALL TEMPORARY TRAFFIC CONTROL DEVICES AND SIGNING AND UNCOVER OR REPLACE EXISTING SPEED LIMIT SIGNS.

8/16/2019 8:40:59 AM SEA_NCDOT_2017_SMUW_Proj\15BPR.26_TrafficControl\15BPR.26_TC_TMP_03.dgn User:BOY89356

APPROVED: *Lori D. Stoucho, PE*
DATE: 8/16/2019



**DOCUMENT NOT CONSIDERED FINAL
UNLESS ALL SIGNATURES COMPLETED**



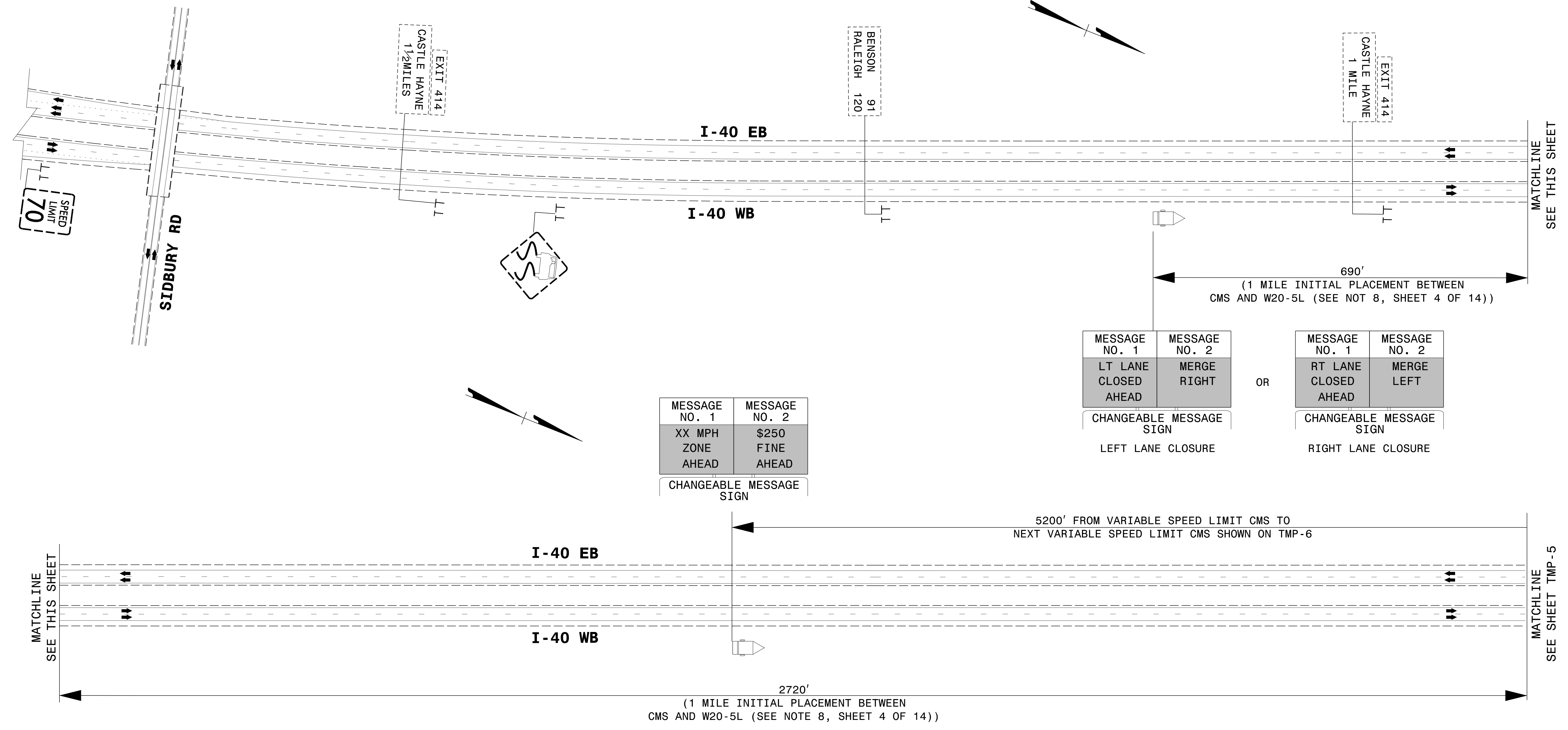
TEMPORARY TRAFFIC CONTROL PHASING

PLANS PREPARED FOR THE NCDOT BY:

M M

MOTT
MACDONALD

PO Box 700
Fuquay-Varina, NC 27526
(919) 552-2253
(919) 552-2254 (Fax)
www.mottmac.com/americas
LICENSE NO. F-0669



SEE GENERAL NOTES ON RSD 1101.02 SHEET 4 OF 14 FOR TEMPORARY LANE CLOSURE.

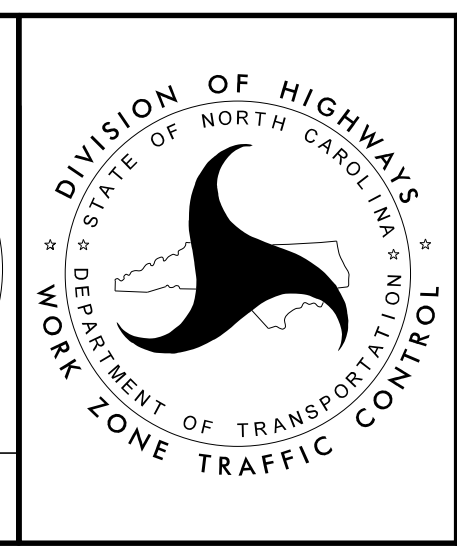
APPROVED: *Lori D. Stouchko, PE*

DATE: 8/16/2019

60393CB8742F461

SEAL
NORTH CAROLINA
PROFESSIONAL
ENGINEER
LOW D. STOUCO
034437

**DOCUMENT NOT CONSIDERED FINAL
UNLESS ALL SIGNATURES COMPLETED**



**TEMPORARY TRAFFIC CONTROL
BRIDGE #48
LANE CLOSURE
DETAIL**

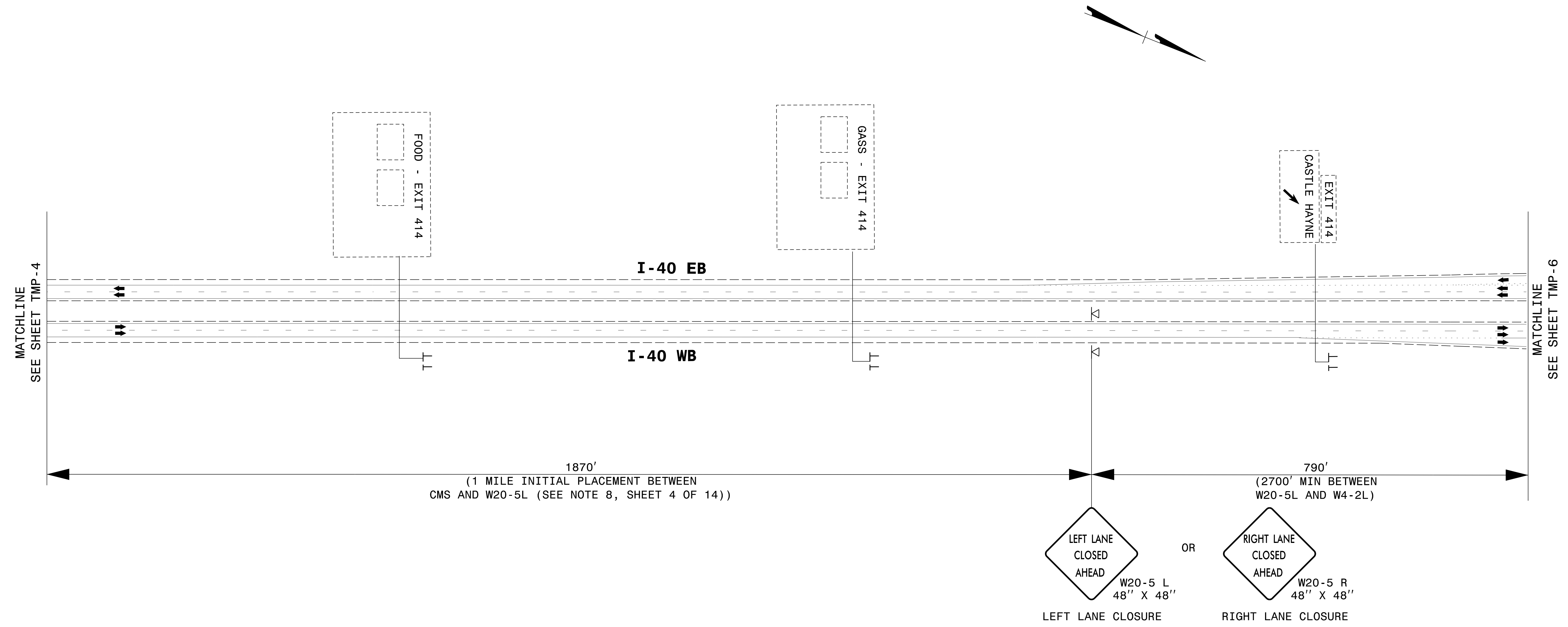
8/16/2019
G:\401998_SEA_NCDOT_2017_SMU\Proj\15BPR\26_TrafficControl\15BPR_26_TC_TMP_04_60_VS.dgn
User:BOY89356

PROJ. REFERENCE NO.	SHEET NO.
15BPR.26	TMP-05

PLANS PREPARED FOR THE NCDOT BY:

M M
MOTT MACDONALD
 LICENSE NO. F-0669

PO Box 700
 Fuquay-Varina, NC 27526
 (919) 552-2253
 (919) 552-2254 (Fax)
 www.mottmac.com/americas

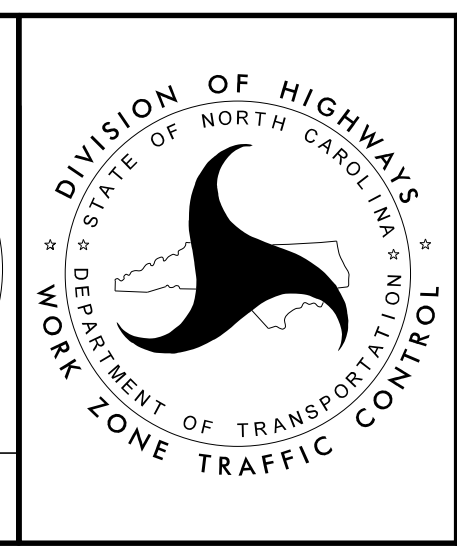


SEE GENERAL NOTES ON RSD 1101.02 SHEET 4 OF 14 FOR TEMPORARY LANE CLOSURE.

APPROVED: *Lori D. Stoucho, PE*
6C933CB8742F461

DATE: 8/16/2019

DOCUMENT NOT CONSIDERED FINAL UNLESS ALL SIGNATURES COMPLETED



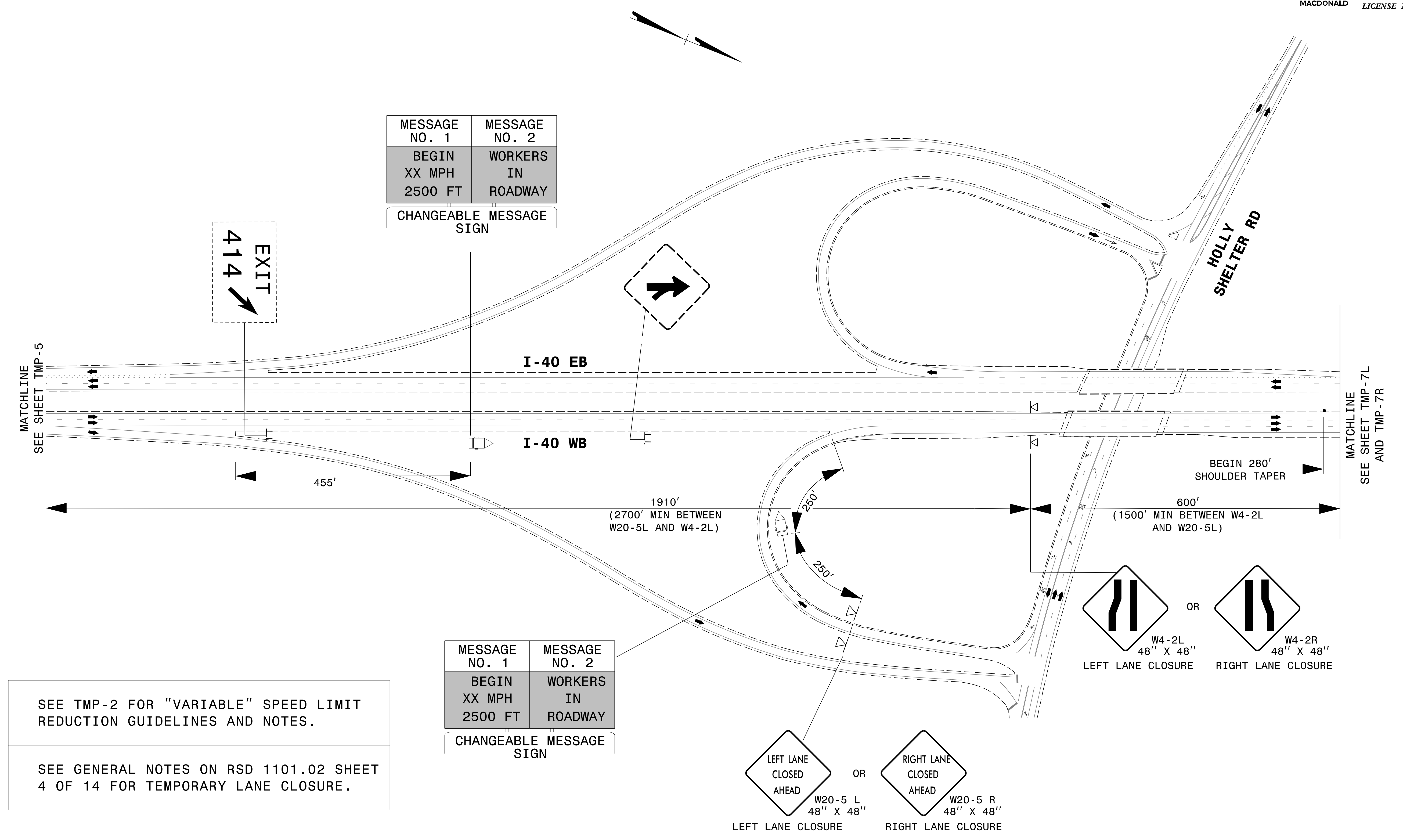
TEMPORARY TRAFFIC CONTROL BRIDGE #48 LANE CLOSURE DETAIL

8/16/2019
 G:\401998_SEA_NCDOT_2017_SMU\Proj\15BPR\26_TrafficControl\15BPR_26_TC_TMP_05_60_VS.dgn
 User:BCY89356

PLANS PREPARED FOR THE NCDOT BY:

M M
 MOTT
 MACDONALD
 LICENSE NO. F-0669

PO Box 700
 Fuquay-Varina, NC 27526
 (919) 552-2253
 (919) 552-2254 (Fax)
 www.mottmac.com/america
 LICENSE NO. F-0669

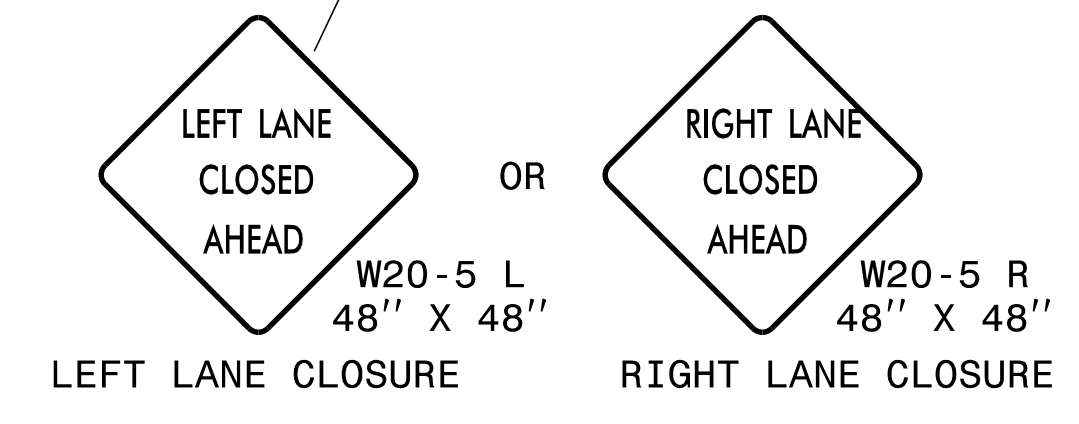


SEE TMP-2 FOR "VARIABLE" SPEED LIMIT REDUCTION GUIDELINES AND NOTES.

SEE GENERAL NOTES ON RSD 1101.02 SHEET 4 OF 14 FOR TEMPORARY LANE CLOSURE.

MESSAGE NO. 1	MESSAGE NO. 2
BEGIN XX MPH 2500 FT	WORKERS IN ROADWAY

CHANGEABLE MESSAGE SIGN

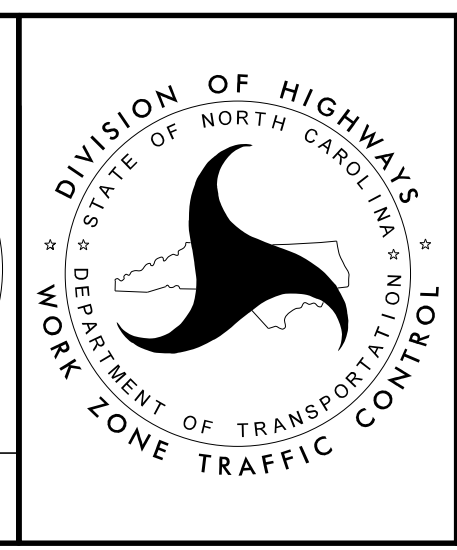


8/16/2019 G:\401998_SEA_NCDOT_2017_SMU\Proj\15BPR\26_TrafficControl\15BPR\26_TC_TMP_06_60_VS.dgn User:BOY89356

APPROVED: *Lori D. Stoucho, PE*
 DATE: 8/16/2019

60393CB8742F461

SEAL
 034437
 ENGINEER
 LORI D. STOUCHO



TEMPORARY TRAFFIC CONTROL
 BRIDGE #48
 LANE CLOSURE
 DETAIL

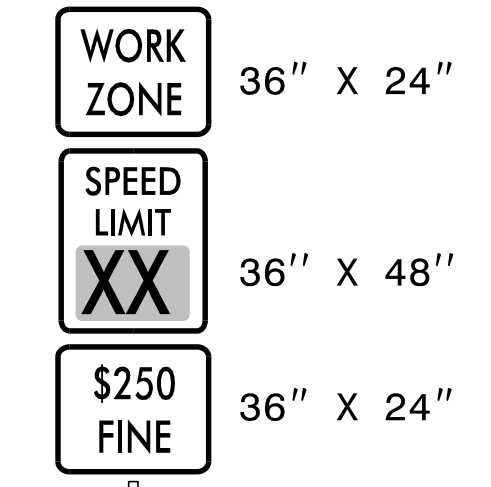
DOCUMENT NOT CONSIDERED FINAL UNLESS ALL SIGNATURES COMPLETED

PLANS PREPARED FOR THE NCDOT BY:

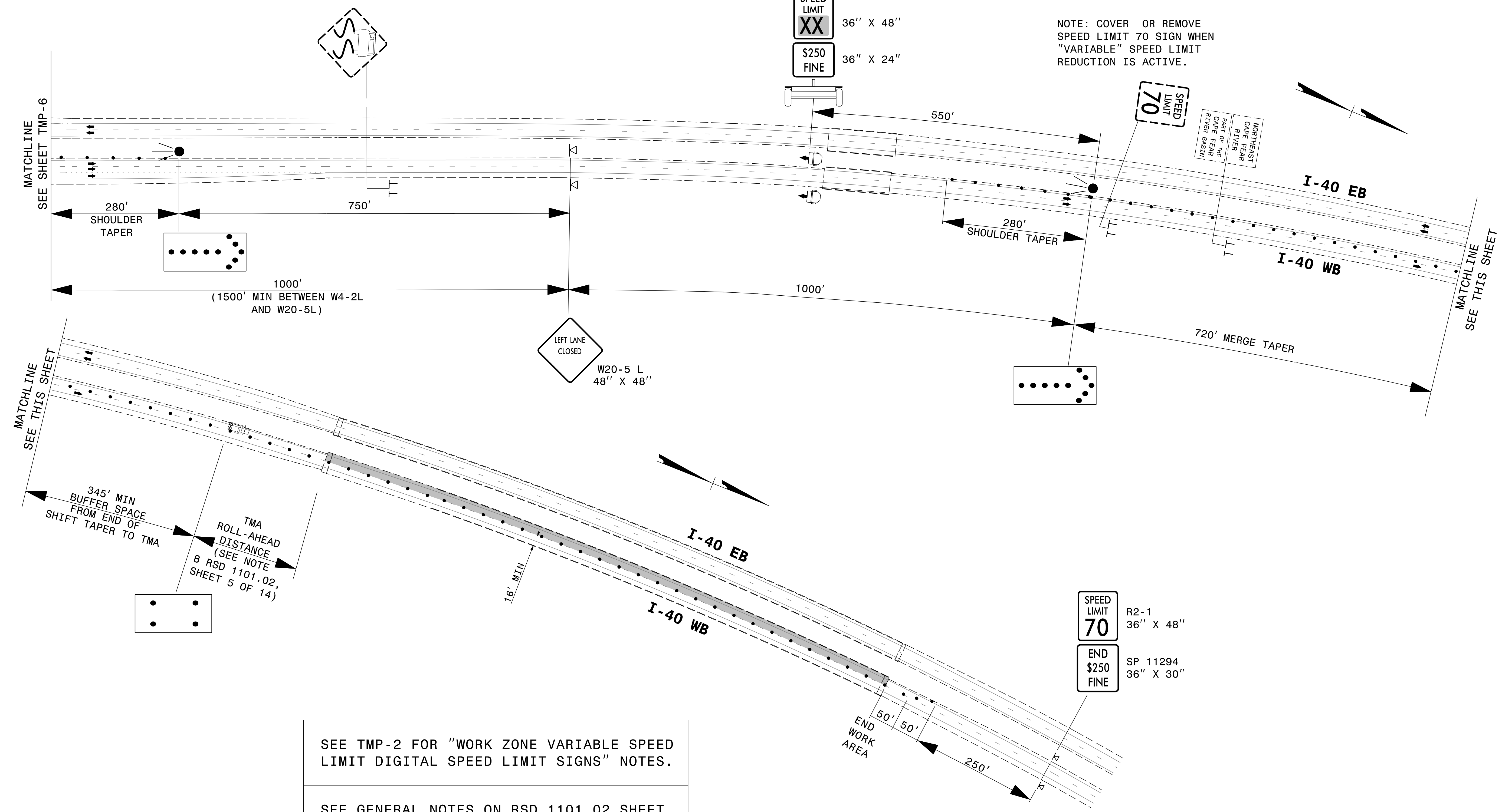
M M
MOTT MACDONALD
 LICENSE NO. F-0669

PO Box 700
 Fuquay-Varina, NC 27526
 (919) 552-2253
 (919) 552-2254 (Fax)
 www.mottmac.com/americas

DIGITAL SPEED LIMIT SIGN
(SEE SPECIAL PROVISION)

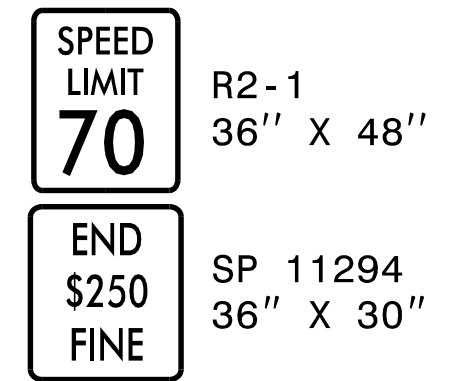


NOTE: COVER OR REMOVE SPEED LIMIT 70 SIGN WHEN "VARIABLE" SPEED LIMIT REDUCTION IS ACTIVE.



SEE TMP-2 FOR "WORK ZONE VARIABLE SPEED LIMIT DIGITAL SPEED LIMIT SIGNS" NOTES.

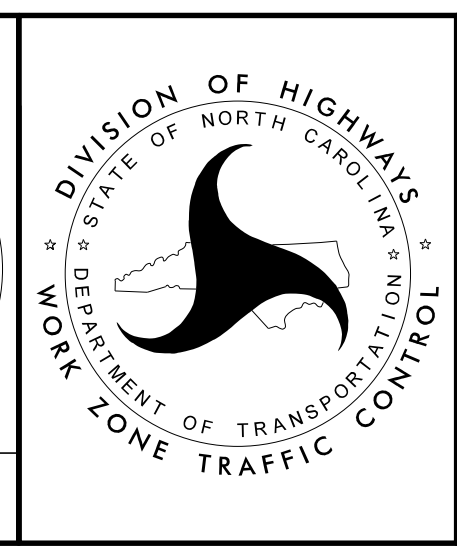
SEE GENERAL NOTES ON RSD 1101.02 SHEET 4 OF 14 FOR TEMPORARY LANE CLOSURE.



8/16/2019 G:\401998_SEA_NCDOT_2017_5MUN-Proj\15BPR.26\TrafficControl\15BPR.26_TC_TMP_07_60_VS.dgn User:BOY89356

APPROVED: *Lori D. Stoucho, PE*
 DATE: 8/16/2019

DOCUMENT NOT CONSIDERED FINAL UNLESS ALL SIGNATURES COMPLETED

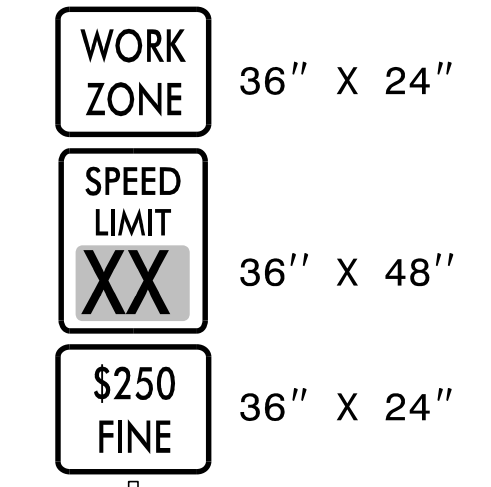


**TEMPORARY TRAFFIC CONTROL
 BRIDGE #48
 LEFT LANE CLOSURE
 DETAIL**

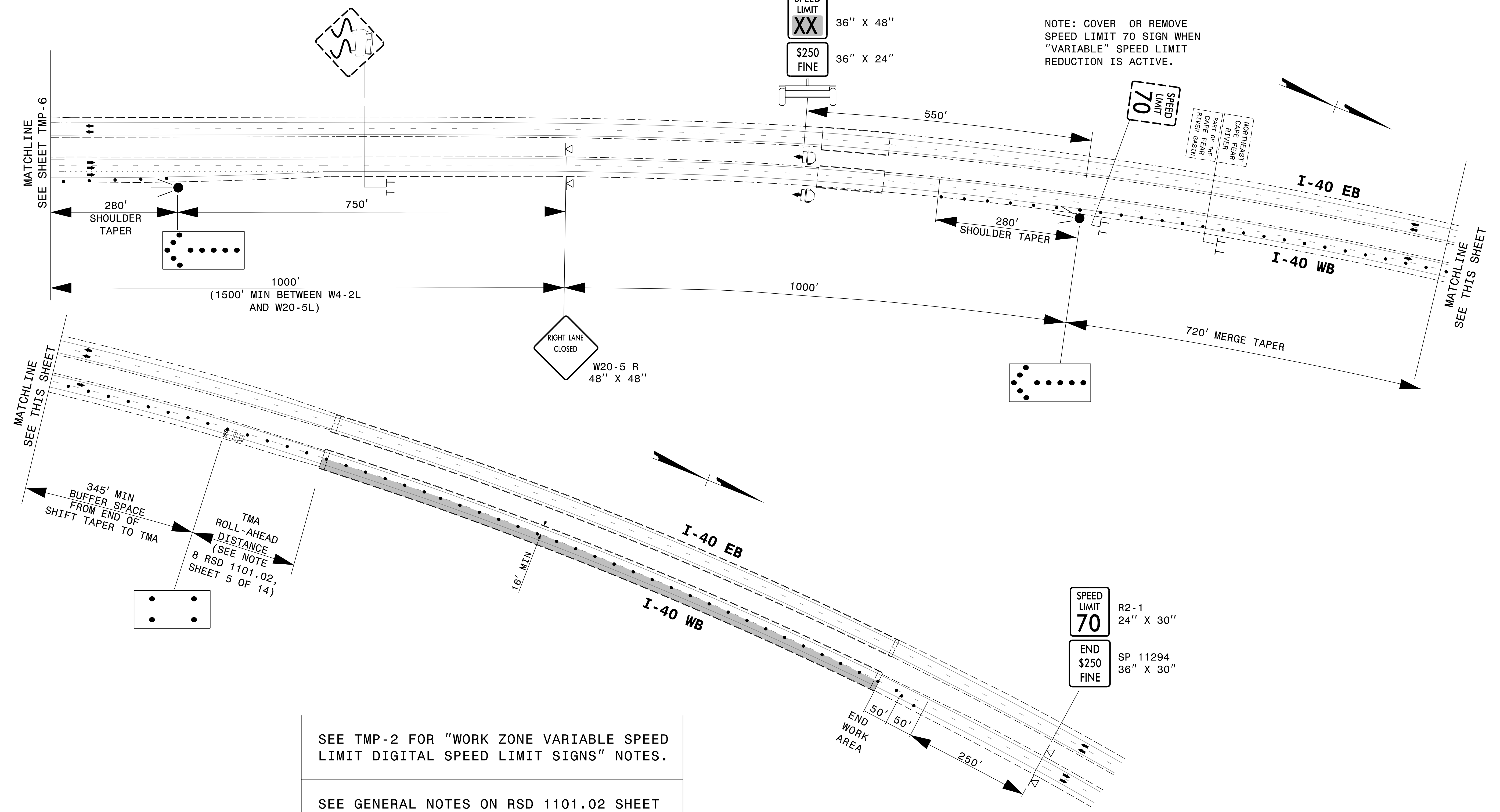
PLANS PREPARED FOR THE NCDOT BY:

M MOTT
M MACDONALD
 PO Box 700
 Fuquay-Varina, NC 27526
 (919) 552-2253
 (919) 552-2254 (Fax)
 www.mottmac.com/americas
 LICENSE NO. F-0669

DIGITAL SPEED LIMIT SIGN
(SEE SPECIAL PROVISION)



NOTE: COVER OR REMOVE SPEED LIMIT 70 SIGN WHEN "VARIABLE" SPEED LIMIT REDUCTION IS ACTIVE.



SEE TMP-2 FOR "WORK ZONE VARIABLE SPEED LIMIT DIGITAL SPEED LIMIT SIGNS" NOTES.

SEE GENERAL NOTES ON RSD 1101.02 SHEET 4 OF 14 FOR TEMPORARY LANE CLOSURE.

APPROVED: Lori D. Stoucho, PE
6C93CB8742F461

DATE: 8/16/2019

DOCUMENT NOT CONSIDERED FINAL UNLESS ALL SIGNATURES COMPLETED

TEMPORARY TRAFFIC CONTROL
BRIDGE #48
RIGHT LANE CLOSURE
DETAIL

8/16/2019 8:40:59 AM SEA_NCDOT_2017_5MU\Proj\15BPR.26\TrafficControl\15BPR.26_TC_TMP_08_60_VS_R.dgn
 User: B0Y89356