

8.17/19

**-LJ- CURVE DATA**  
 PI Sta 63+07.08  
 $\Delta = 66^\circ 26' 56.0''$  (LT)  
 $D = 12^\circ 43' 56.6''$   
 $L = 521.89'$   
 $T = 294.75'$   
 $R = 450.00'$   
 $SE = 04$   
 $RO = 120'$   
 $DS = 35$  MPH

**-LJ- CURVE DATA**  
 PI Sta 75+07.24  
 $\Delta = 75^\circ 47' 42.9''$  (RT)  
 $D = 4^\circ 35' 01.2''$   
 $L = 1,653.60'$   
 $T = 973.02'$   
 $R = 1,250.00'$   
 $SE = 07$   
 $RO = 210'$   
 $DS = 50$  MPH

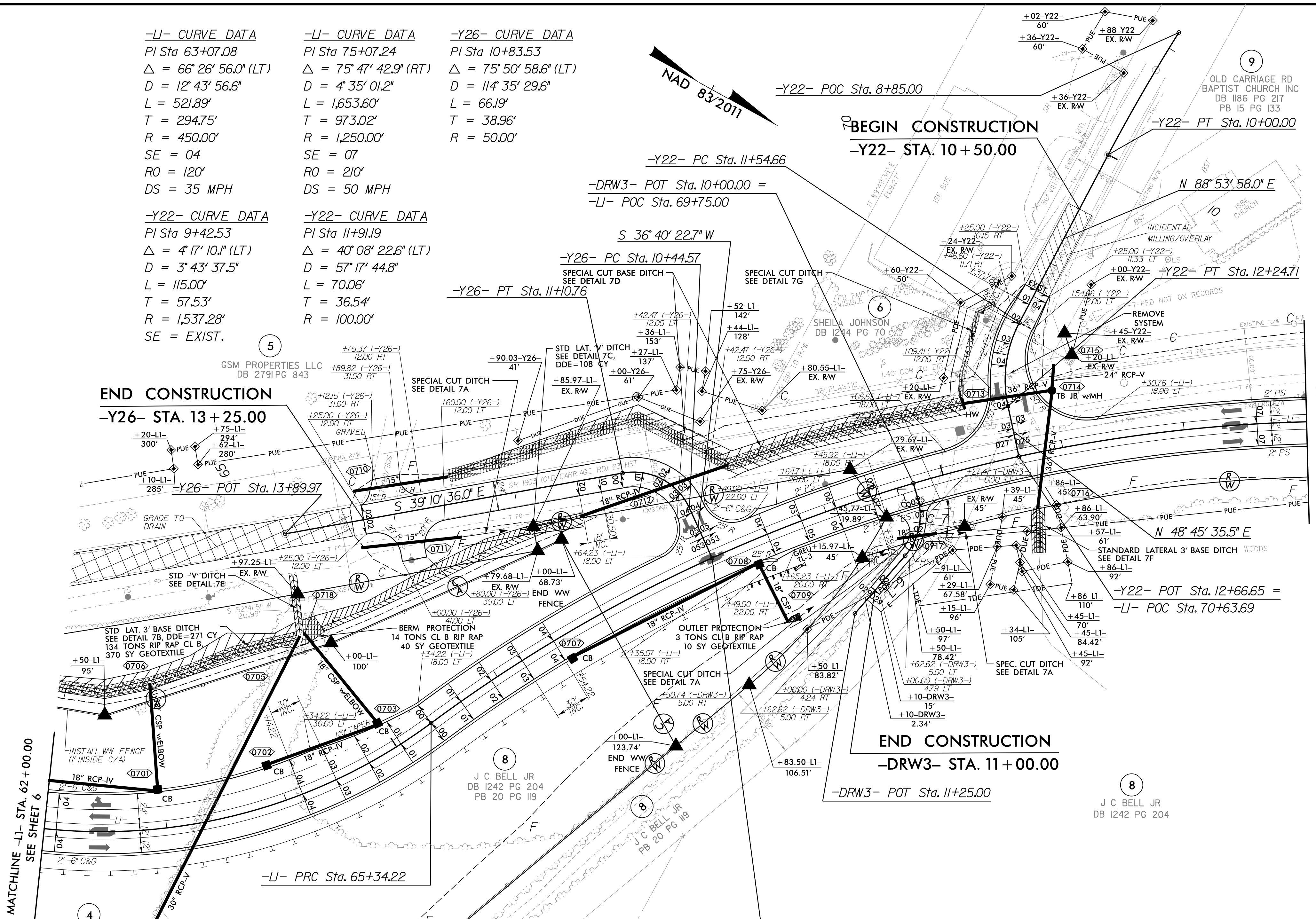
**-Y26- CURVE DATA**  
 PI Sta 10+83.53  
 $\Delta = 75^\circ 50' 58.6''$  (LT)  
 $D = 11^\circ 43' 29.6''$   
 $L = 66.19'$   
 $T = 38.96'$   
 $R = 50.00'$

**-Y22- CURVE DATA**  
 PI Sta 9+42.53  
 $\Delta = 4^\circ 17' 10.1''$  (LT)  
 $D = 3^\circ 43' 37.5''$   
 $L = 115.00'$   
 $T = 57.53'$   
 $R = 1,537.28'$   
 $SE = EXIST.$

**-Y22- CURVE DATA**  
 PI Sta 11+91.19  
 $\Delta = 40^\circ 08' 22.6''$  (LT)  
 $D = 57^\circ 17' 44.8''$   
 $L = 70.06'$   
 $T = 36.54'$   
 $R = 100.00'$

**END CONSTRUCTION**  
 -Y26- STA. 13+25.00

**BEGIN CONSTRUCTION**  
 -Y22- STA. 10+50.00



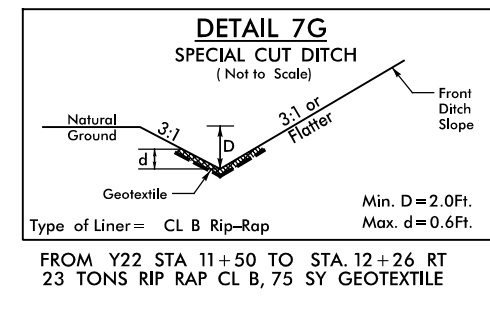
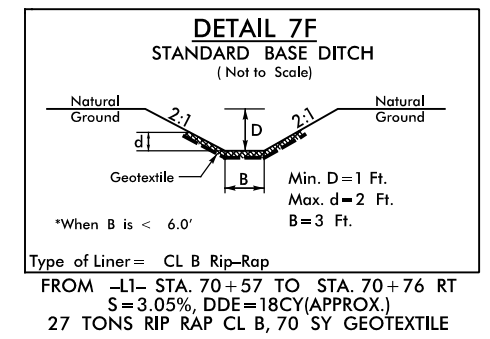
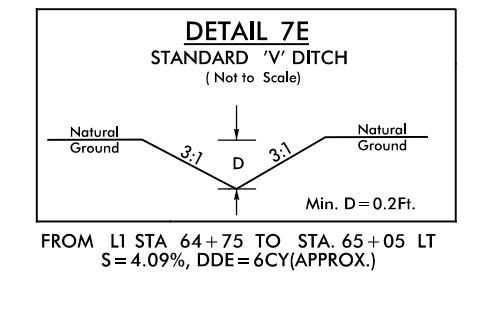
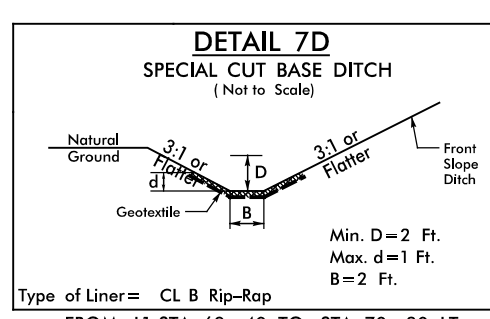
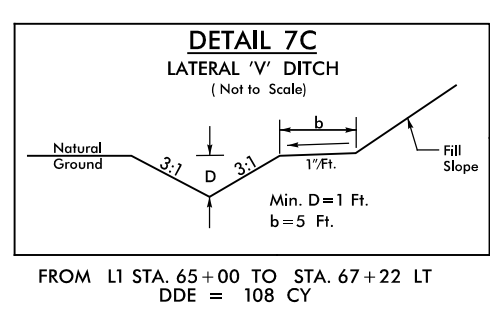
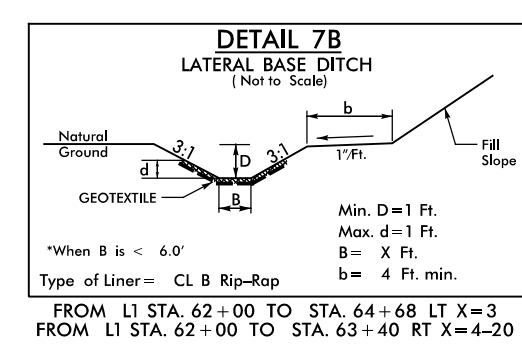
MATCHLINE -LJ- STA. 62+00.00  
 SEE SHEET 6

MATCHLINE -LJ- STA. 73+00.00  
 SEE SHEET 8

FOR -LJ- PROFILE, SEE SHEET 12  
 FOR -Y22- PROFILE, SEE SHEET 16  
 FOR -Y26- PROFILE, SEE SHEET 19  
 FOR -DRW3- PROFILE, SEE SHEET 19

**-DRW3- ALIGNMENT DATA**  
 L-8 N 44° 41' 39.7" E  
 C-7 PC Sta. 10+12.60  
 PT Sta. 10+62.62  
 L-9 S 77° 59' 32.7" E

**-DRW3- CURVE DATA**  
 PI Sta 10+39.93  
 $\Delta = 57^\circ 18' 47.6''$  (RT)  
 $D = 11^\circ 43' 29.6''$   
 $L = 50.02'$   
 $T = 27.33'$   
 $R = 50.00'$



PROJECT REFERENCE NO. <b>U-5996</b>	SHEET NO. <b>7</b>
RW SHEET NO.	
ROADWAY DESIGN ENGINEER	HYDRAULICS ENGINEER
12/13/2021	12/10/2021
DOCUMENT NOT CONSIDERED FINAL UNLESS ALL SIGNATURES COMPLETED	

**vhb**  
 940 Main Campus Drive, Suite 500 Raleigh, NC 27606  
 NC License No. C-7005

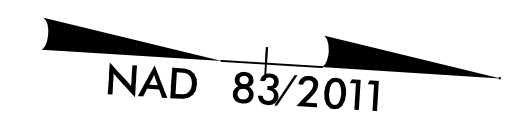
**MI ENGINEERING**  
 1011 Schaub Drive, Suite 100  
 Raleigh, NC 27605  
 Firm PE No. 04001

12/10/2021 10:56:06 AM d:\psh7.dgn

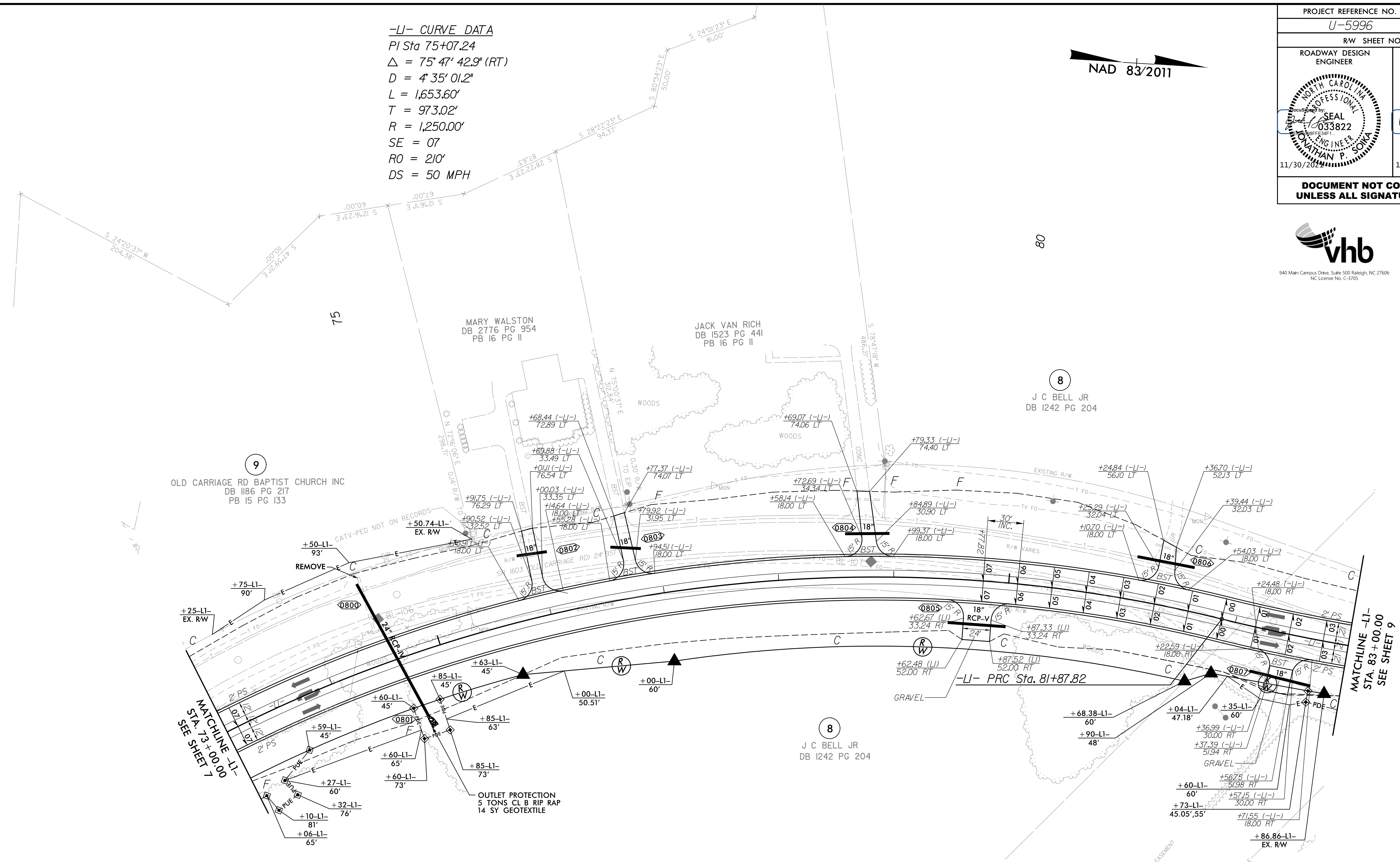


8.17/99

**-LI- CURVE DATA**  
 PI Sta 75+07.24  
 $\Delta = 75^\circ 47' 42.9" (RT)$   
 $D = 4' 35" 01.2"$   
 $L = 1,653.60'$   
 $T = 973.02'$   
 $R = 1,250.00'$   
 $SE = 07'$   
 $RO = 210'$   
 $DS = 50 MPH$



PROJECT REFERENCE NO. <i>U-5996</i>		SHEET NO. <i>8</i>	
RW SHEET NO.			
ROADWAY DESIGN ENGINEER		HYDRAULICS ENGINEER	
11/30/2012		11/30/2012	
<b>DOCUMENT NOT CONSIDERED FINAL UNLESS ALL SIGNATURES COMPLETED</b>			



PAVEMENT REMOVAL

FOR -LI- PROFILE, SEE SHEET 12

11/3/2021  
 15:56:06  
 du\_psh8.dgn  
 Townsend



8.17.17.99

OLD CARRIAGE RD. AT REGES STORE RD/GREEN HILLS RD.			
2020 ADT 2040	REGES STORE RD.	1891 2500	
		713 800	313 400
SR 1603 OLD CARRIAGE RD.		SR 1603 OLD CARRIAGE RD.	
6243 7200	2165 2600	339 600	4017 4800
	GREEN HILLS RD.	3370 4500	

**-Y24- CURVE DATA**  
 PI Sta 11+74.91  
 $\Delta = 4^{\circ} 02' 03.8" (LT)$   
 $D = 2^{\circ} 41' 38.5"$   
 $L = 149.75'$   
 $T = 74.91'$   
 $R = 2,126.78'$   
 SE = NC

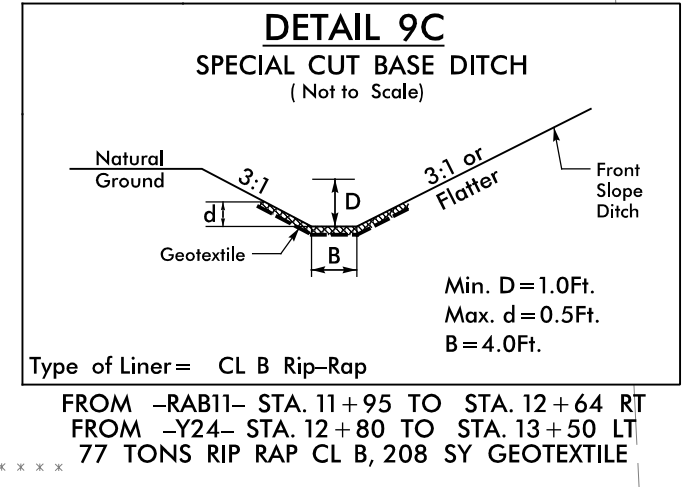
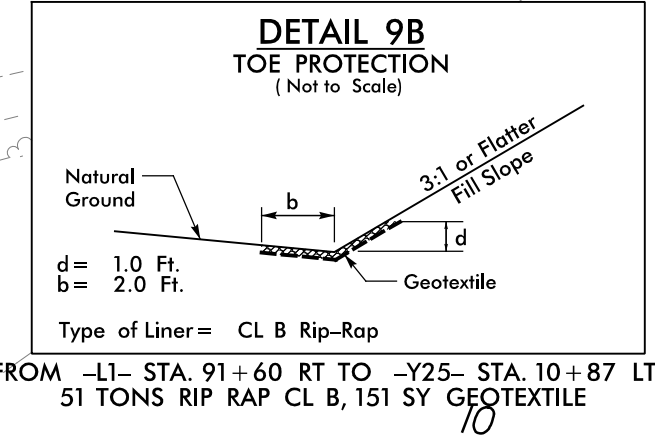
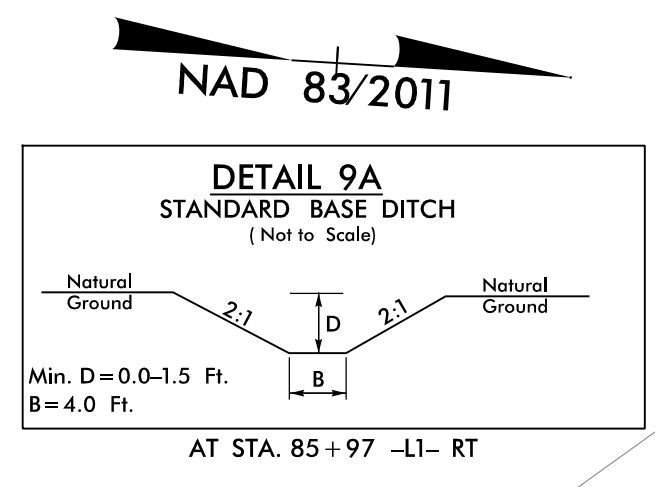
**-Y24- CURVE DATA**  
 PI Sta 12+81.15  
 $\Delta = 17^{\circ} 34' 50.9" (LT)$   
 $D = 28^{\circ} 13' 28.3"$   
 $L = 62.29'$   
 $T = 31.39'$   
 $R = 203.00'$   
 SE = NC

**-RAB11- CURVE DATA**  
 PI Sta 10+00.00  
 $\Delta = 359^{\circ} 59' 32.5" (LT)$   
 $D = 76^{\circ} 23' 39.7"$   
 $L = 471.23'$   
 $T = 0.00'$   
 $R = 75.00'$   
 SE = NC  
 DS = 20 MPH

**-LI- CURVE DATA**  
 PI Sta 84+11.96  
 $\Delta = 16^{\circ} 21' 09.0" (LT)$   
 $D = 3^{\circ} 40' 22.1"$   
 $L = 445.23'$   
 $T = 224.14'$   
 $R = 1,560.00'$   
 SE = 06  
 RO = 180'  
 DS = 50 MPH

**-LI- CURVE DATA**  
 PI Sta 92+61.98  
 $\Delta = 2^{\circ} 26' 28.7" (RT)$   
 $D = 0^{\circ} 49' 59.6"$   
 $L = 293.00'$   
 $T = 146.52'$   
 $R = 6,876.46'$   
 SE = NC

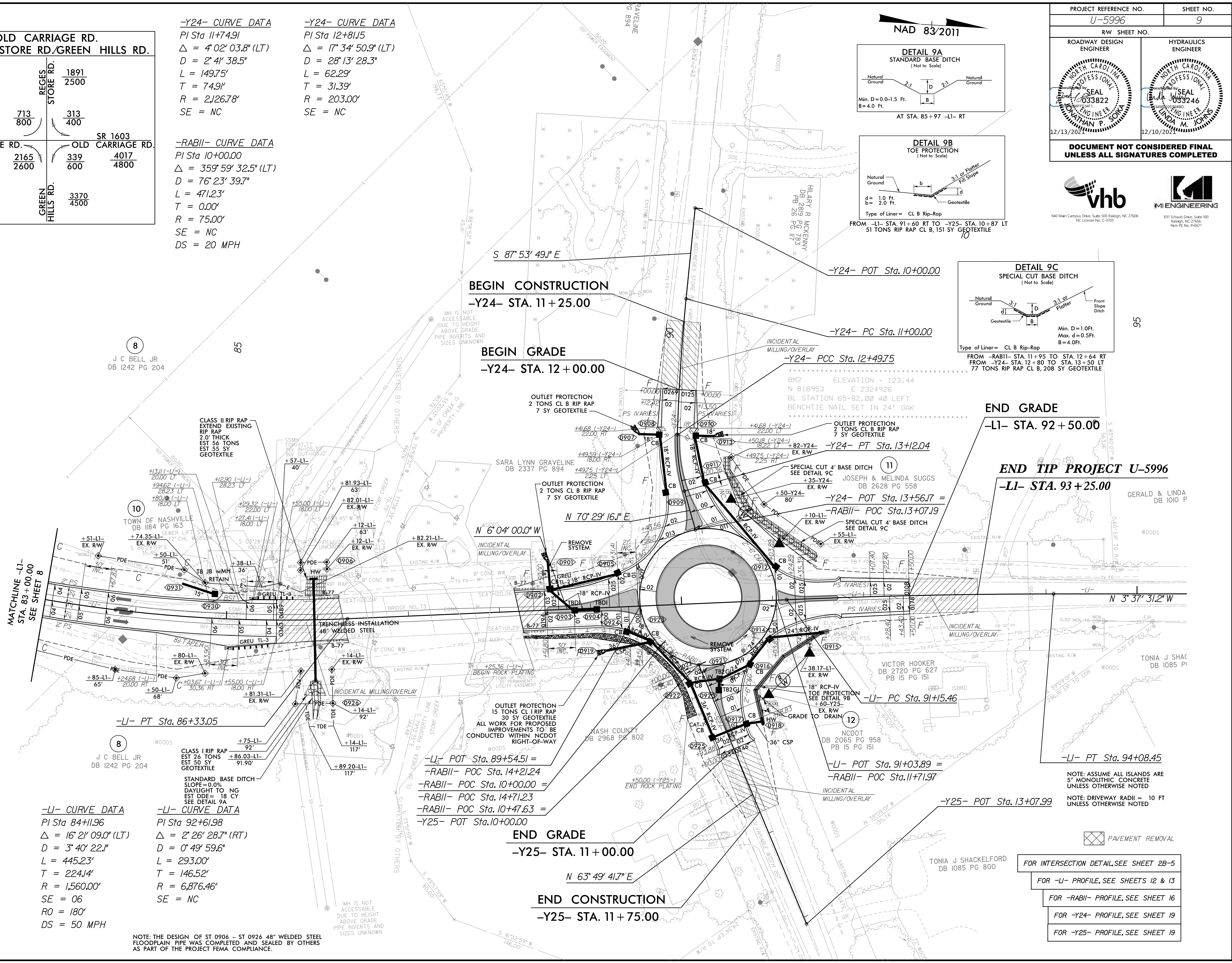
NOTE: THE DESIGN OF ST 0906 - ST 0924 48" WELDED STEEL FLOODPLAIN PIPE WAS COMPLETED AND SEALED BY OTHERS AS PART OF THE PROJECT FEMA COMPLIANCE.



PROJECT REFERENCE NO. U-5996	SHEET NO. 9
ROADWAY DESIGN ENGINEER	HYDRAULICS ENGINEER
<b>DOCUMENT NOT CONSIDERED FINAL UNLESS ALL SIGNATURES COMPLETED</b>	

940 Main Campus Drive, Suite 500 Raleigh, NC 27606  
NC License No. C-7075

1011 Schaub Drive, Suite 100  
Raleigh, NC 27605  
Firm No. 04001



NOTE: ASSUME ALL ISLANDS ARE 5' MONOLITHIC CONCRETE UNLESS OTHERWISE NOTED  
 NOTE: DRIVEWAY RADII = 10 FT UNLESS OTHERWISE NOTED

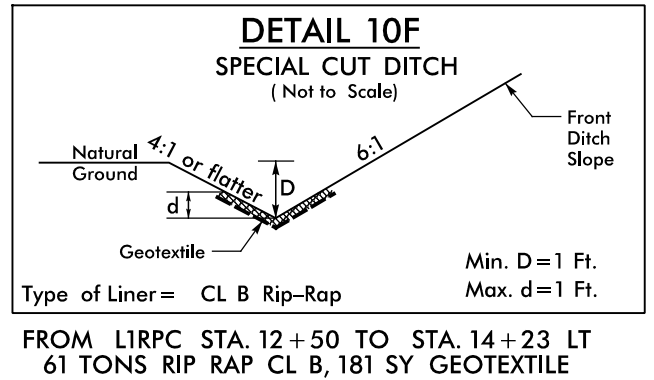
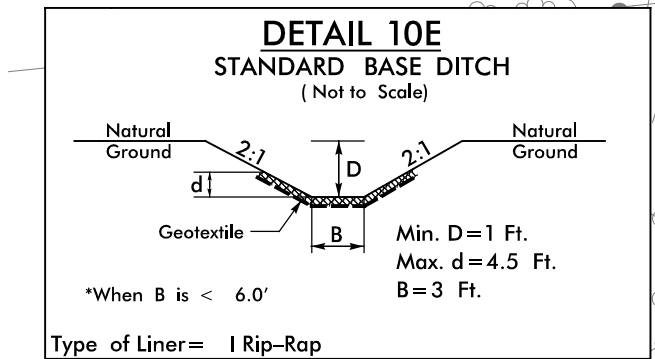
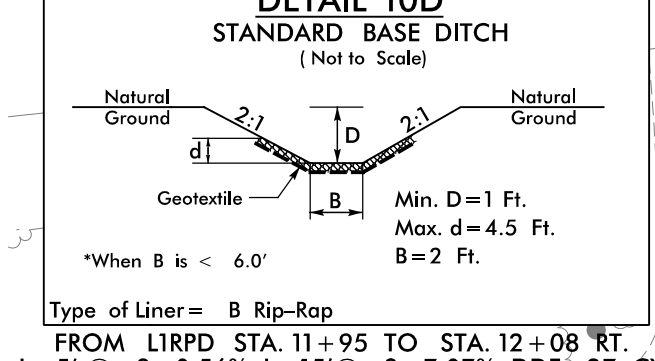
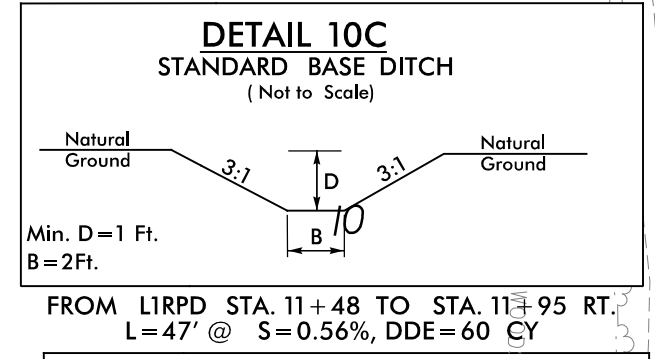
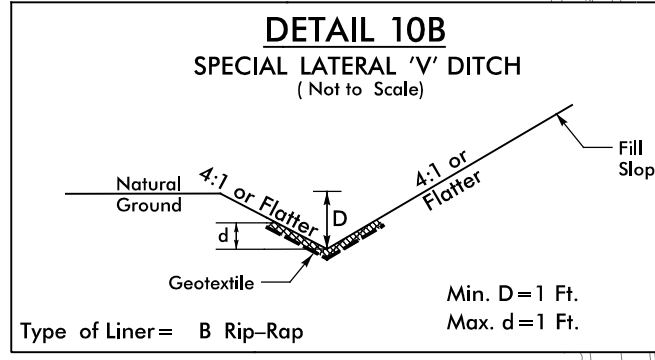
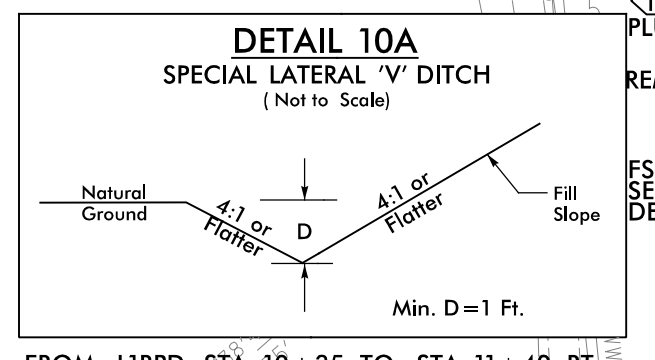
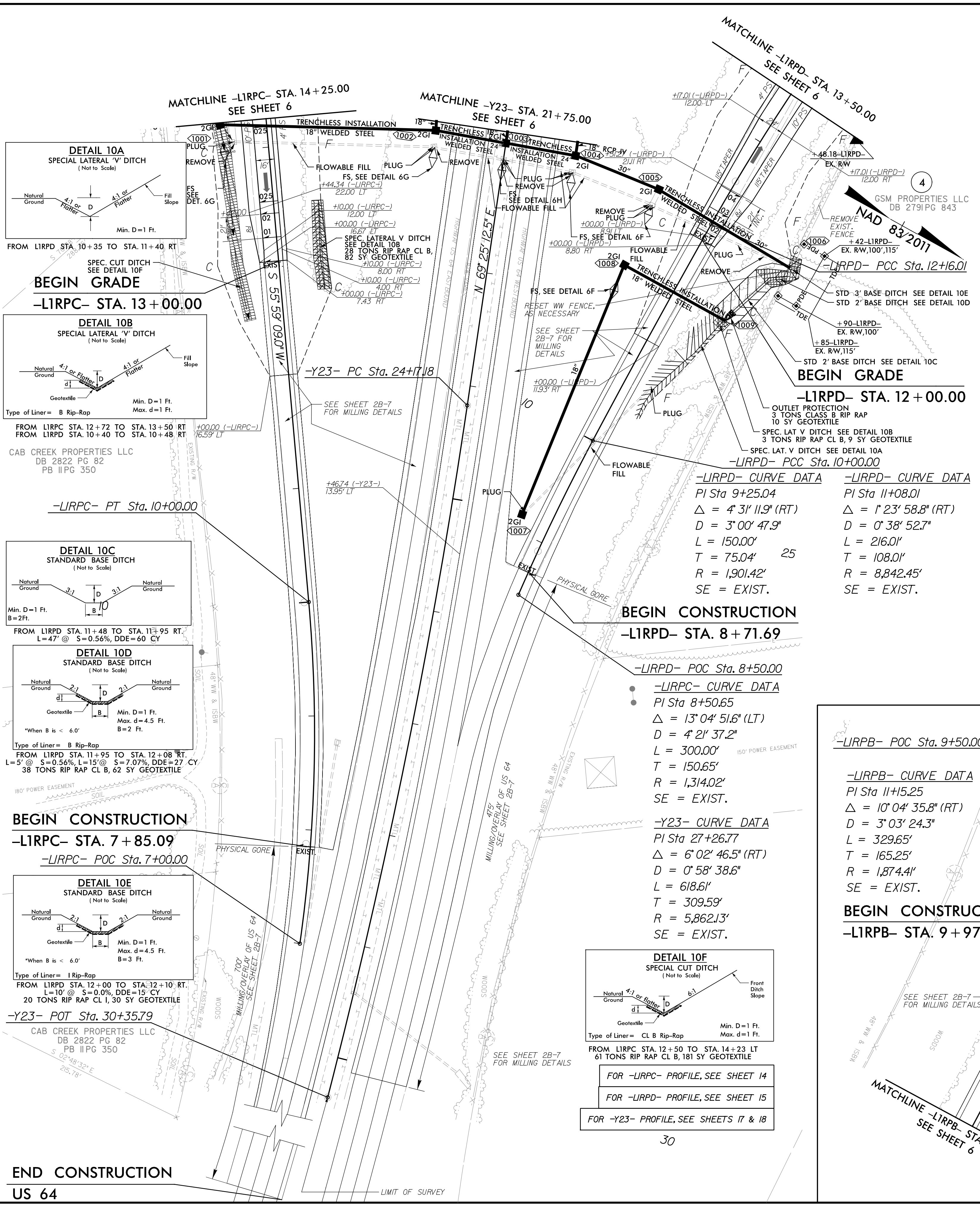
- FOR INTERSECTION DETAIL, SEE SHEET 2B-5
- FOR -LI- PROFILE, SEE SHEETS 12 & 13
- FOR -RAB11- PROFILE, SEE SHEET 16
- FOR -Y24- PROFILE, SEE SHEET 19
- FOR -Y25- PROFILE, SEE SHEET 19

12/10/2021 12:59:06 PM ul-psf9.dgn



8.17.17.99

PROJECT REFERENCE NO. U-5996	SHEET NO. 10
ROADWAY DESIGN ENGINEER	HYDRAULICS ENGINEER
DOCUMENT NOT CONSIDERED FINAL UNLESS ALL SIGNATURES COMPLETED	



FOR -LIRPC- PROFILE, SEE SHEET 14  
 FOR -LIRPD- PROFILE, SEE SHEET 15  
 FOR -Y23- PROFILE, SEE SHEETS 17 & 18

BEGIN CONSTRUCTION  
 US 64

END OF EXIST. ACCEL TAPER

BEGINNING OF EXIST. DECEL TAPER

BEGIN CONSTRUCTION

BEGIN CONSTRUCTION

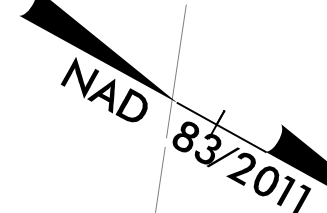
BEGIN CONSTRUCTION

BEGIN CONSTRUCTION

BEGIN CONSTRUCTION

BEGIN CONSTRUCTION

END CONSTRUCTION  
 US 64



-Y23- POT Sta. 8+00.00

-LIRPA- CURVE DATA  
 PI Sta 8+50.22  
 $\Delta = 7^{\circ} 35' 37.4''$  (LT)  
 D = 2' 31' 52.5"  
 L = 300.00'  
 T = 150.22'  
 R = 2,263.54'  
 SE = EXIST.

-LIRPA- POC Sta. 7+00.00

BEGIN CONSTRUCTION  
 -LIRPA- STA. 7+48.74

FOR -LIRPA- PROFILE, SEE SHEET 13  
 FOR -LIRPB- PROFILE, SEE SHEET 14  
 FOR -Y23- PROFILE, SEE SHEETS 17 & 18

1/3/2021 15:56:06 d:\psh10.dgn

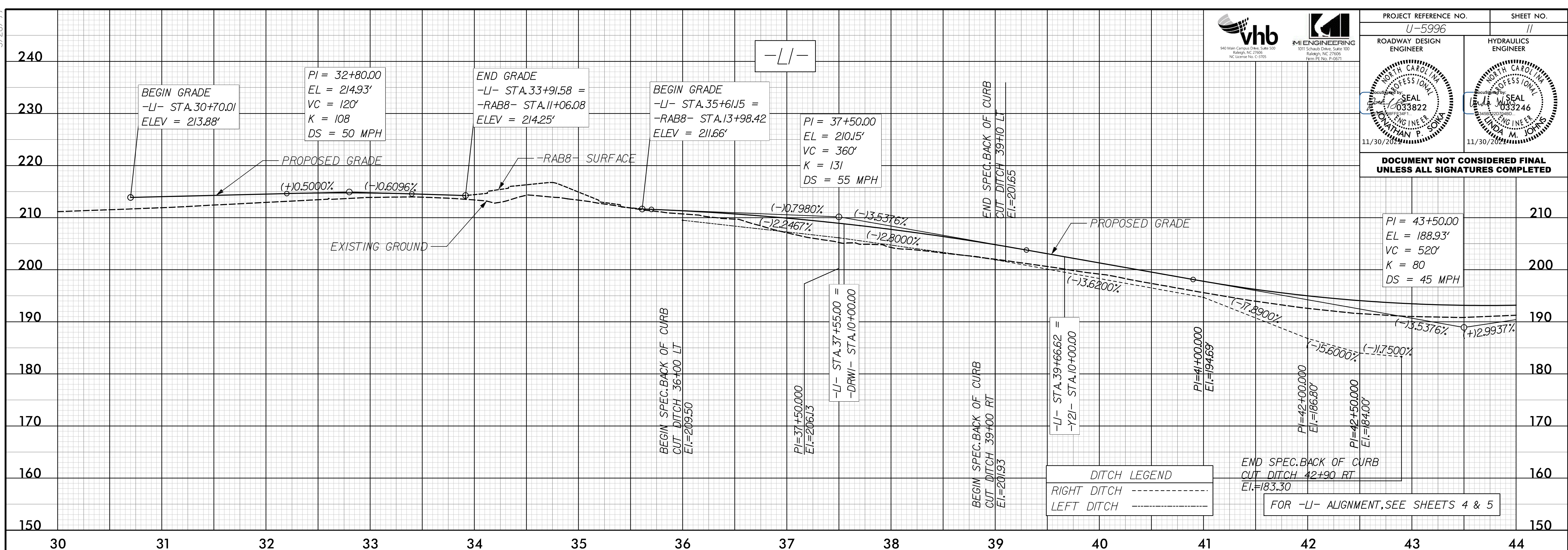


5/28/2021

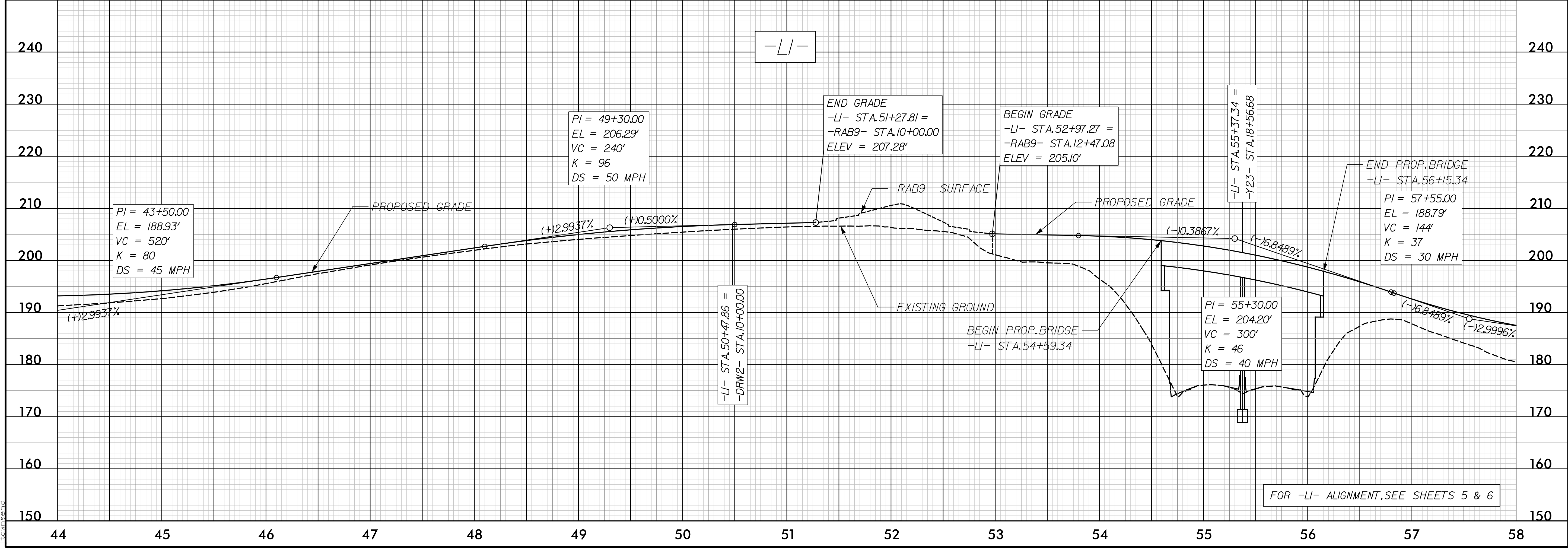


PROJECT REFERENCE NO. U-5996	SHEET NO. 11
ROADWAY DESIGN ENGINEER SEAL 033822 NATHAN P. SOJA 11/30/2018	HYDRAULICS ENGINEER SEAL 033246 WANDA M. JOHNS 11/30/2018

DOCUMENT NOT CONSIDERED FINAL UNLESS ALL SIGNATURES COMPLETED



1/3/2021 15:56:06 du\_e.f1\_psh11.dgn



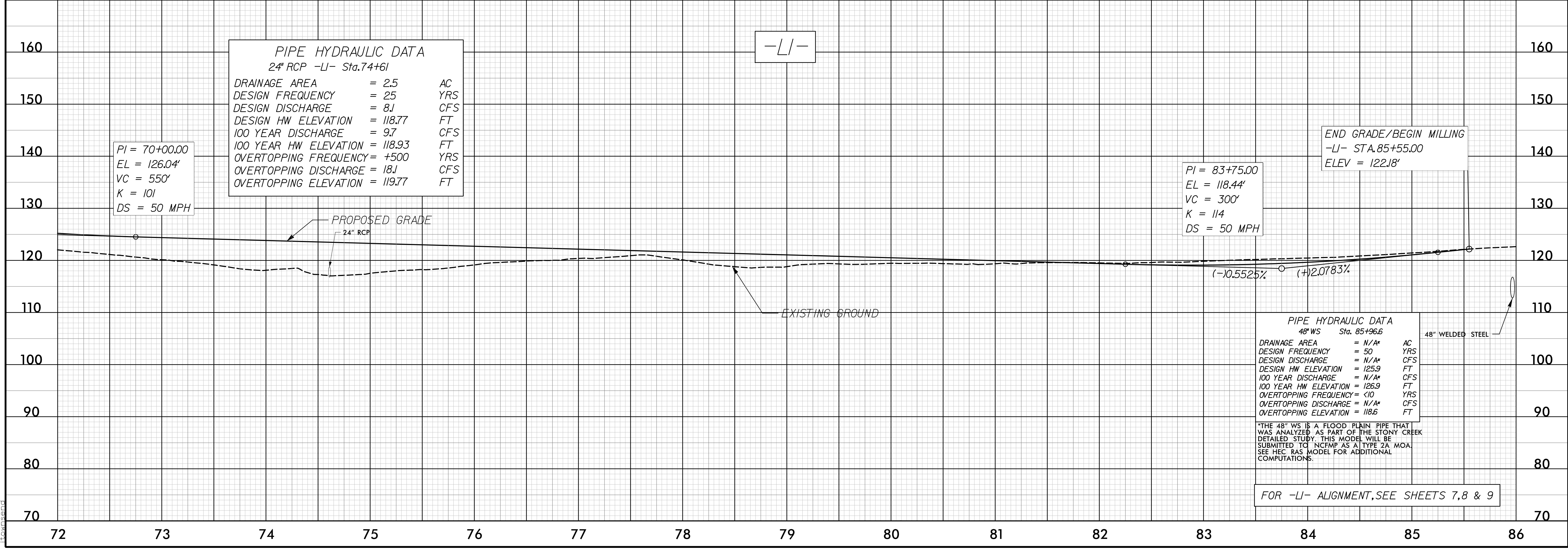
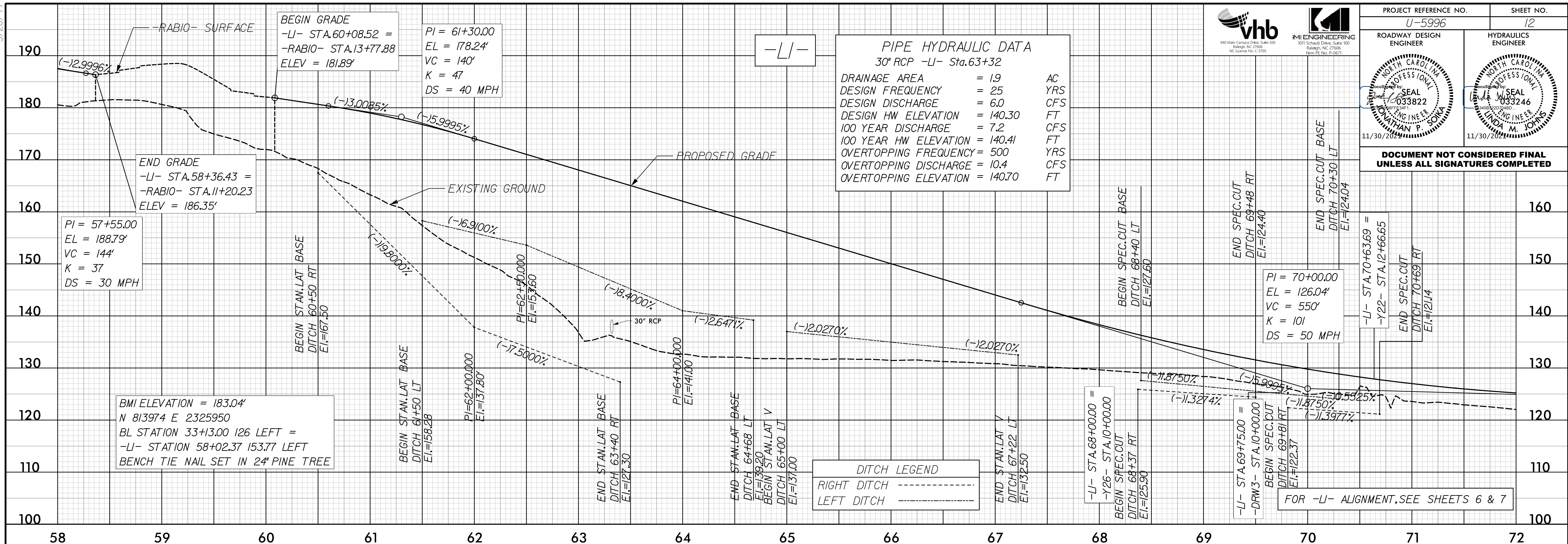


5/28/19



PROJECT REFERENCE NO. U-5996	SHEET NO. 12
ROADWAY DESIGN ENGINEER SEAL 033822 KATHAN P. SOLA 11/30/2018	HYDRAULICS ENGINEER SEAL 033246 LINDA M. JOHNS 11/30/2018

DOCUMENT NOT CONSIDERED FINAL UNLESS ALL SIGNATURES COMPLETED



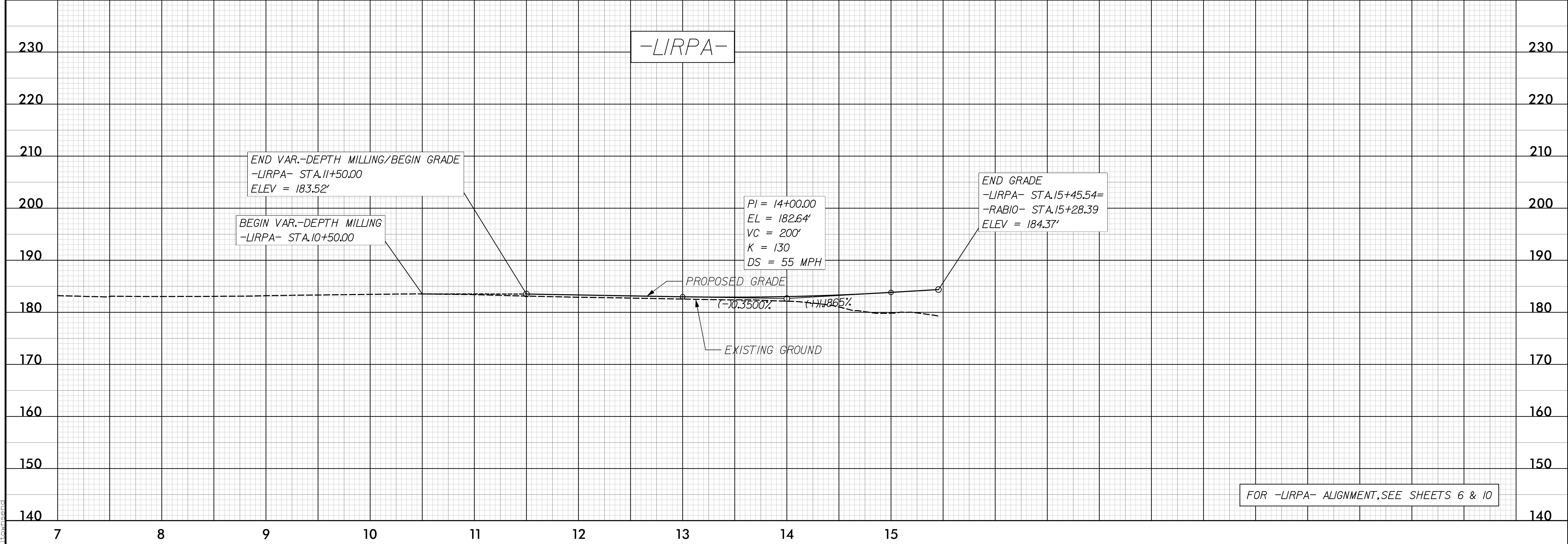
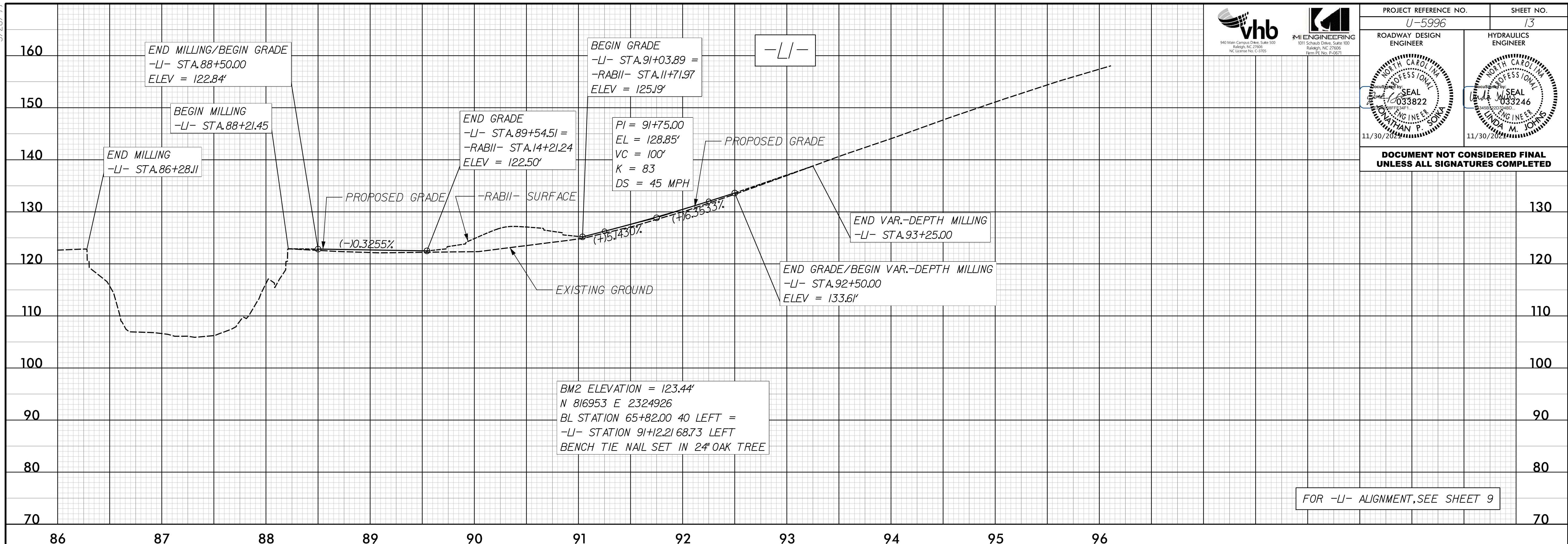
11/17/2021 15:56:06 du\_pfl\_psh12.dgn

5/28/99



PROJECT REFERENCE NO. U-5996	SHEET NO. 13
ROADWAY DESIGN ENGINEER W. P. SOUSA	HYDRAULICS ENGINEER W. P. SOUSA
Professional Engineer Seal W. P. SOUSA 033822 11/30/2011	Professional Engineer Seal W. P. SOUSA 033246 11/30/2011

DOCUMENT NOT CONSIDERED FINAL UNLESS ALL SIGNATURES COMPLETED



11/3/2021 15:56:06 du\_pfl\_psh13.dgn

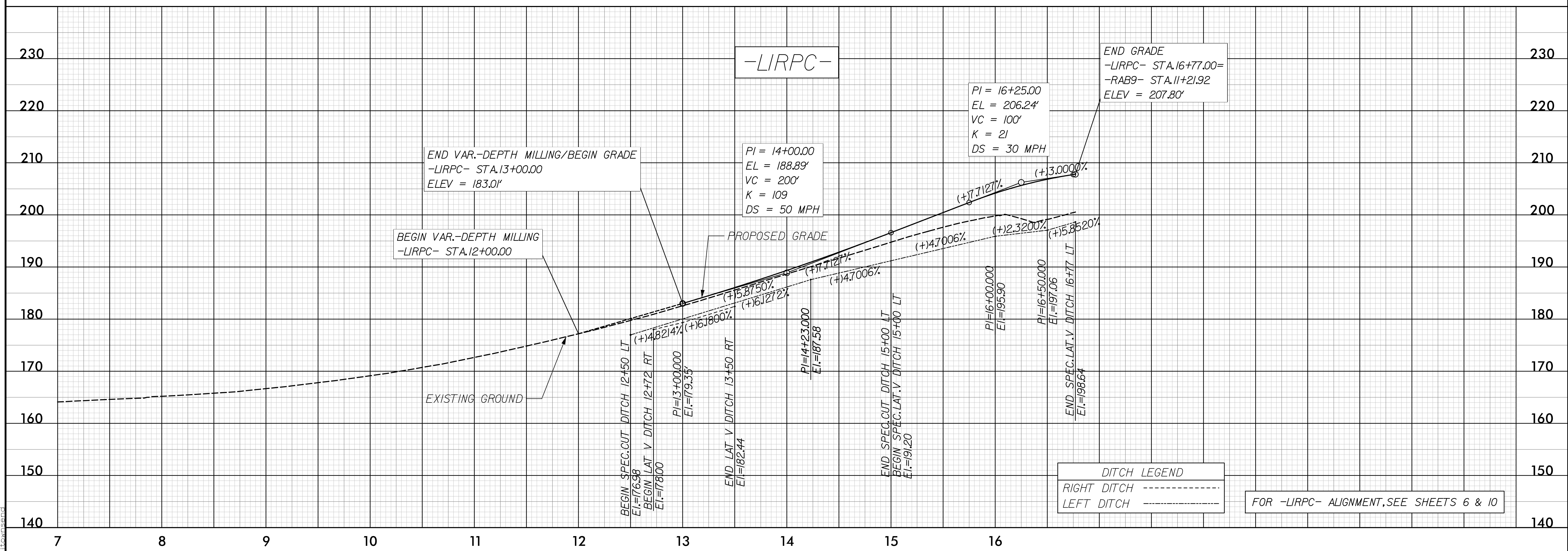
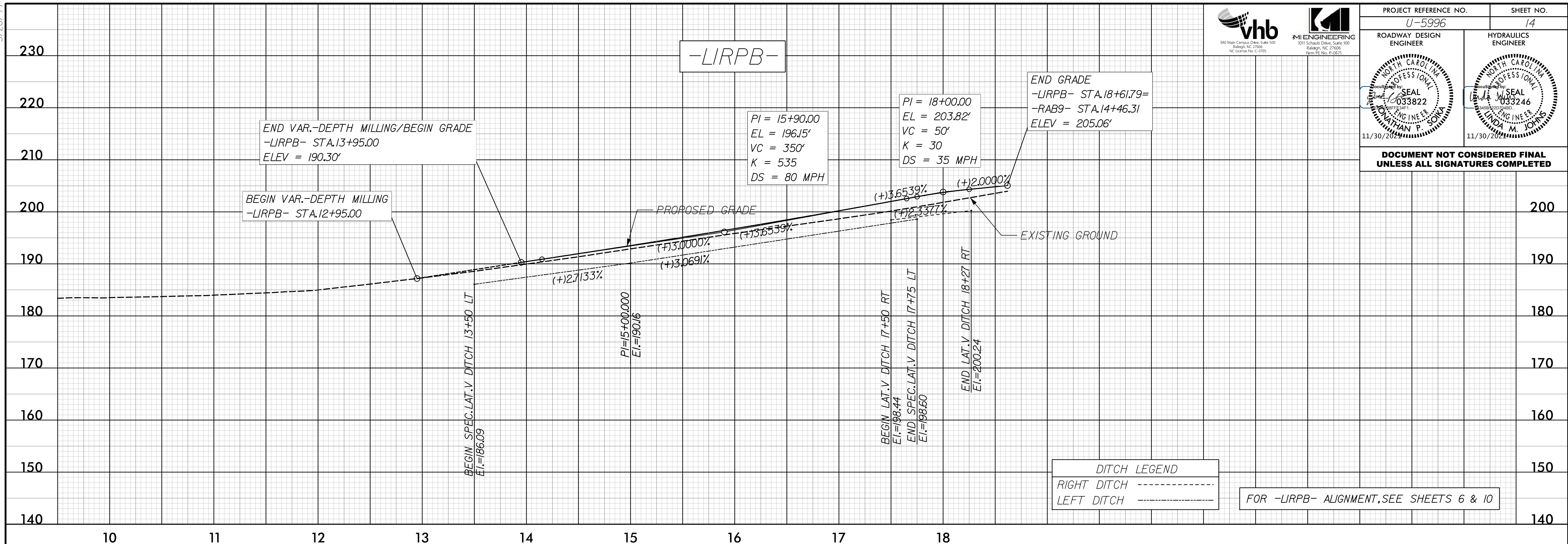


5/28/99



PROJECT REFERENCE NO. U-5996	SHEET NO. 14
ROADWAY DESIGN ENGINEER W. P. SOYAK Professional Seal 033822 11/30/2011	HYDRAULICS ENGINEER W. M. JOHNS Professional Seal 033246 11/30/2011

DOCUMENT NOT CONSIDERED FINAL UNLESS ALL SIGNATURES COMPLETED



1/3/2021 15:56:06 du\_p1\_psh14.dgn

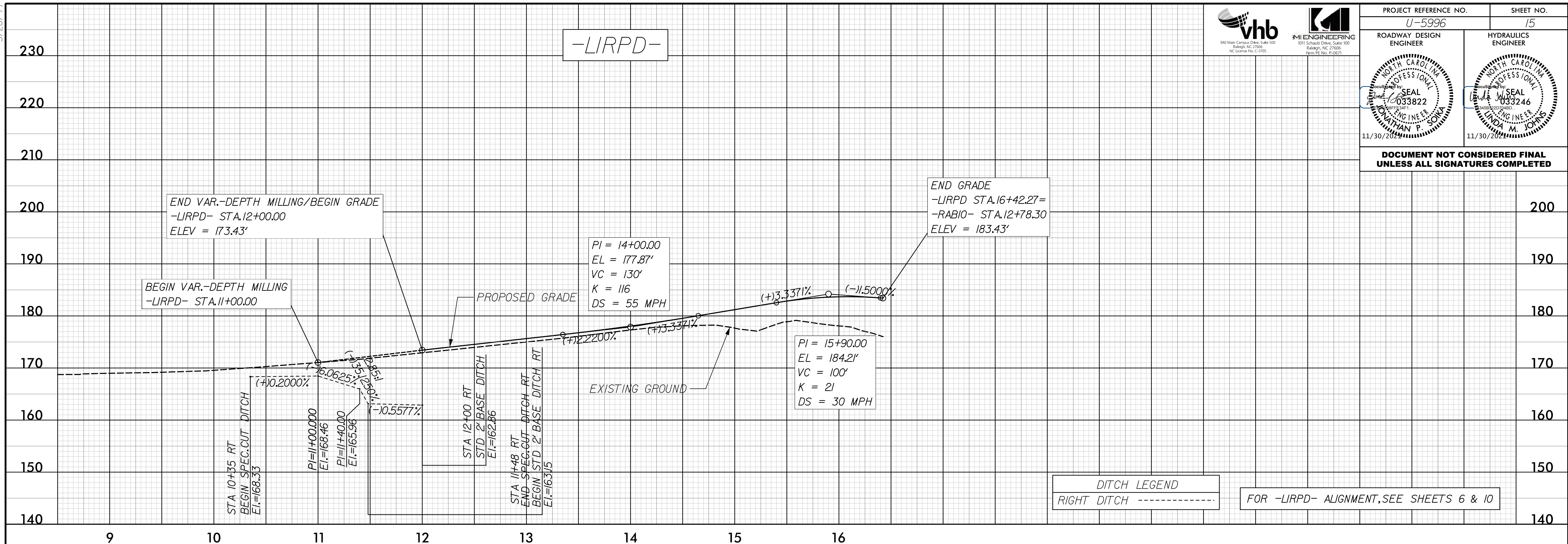


5/28/2021

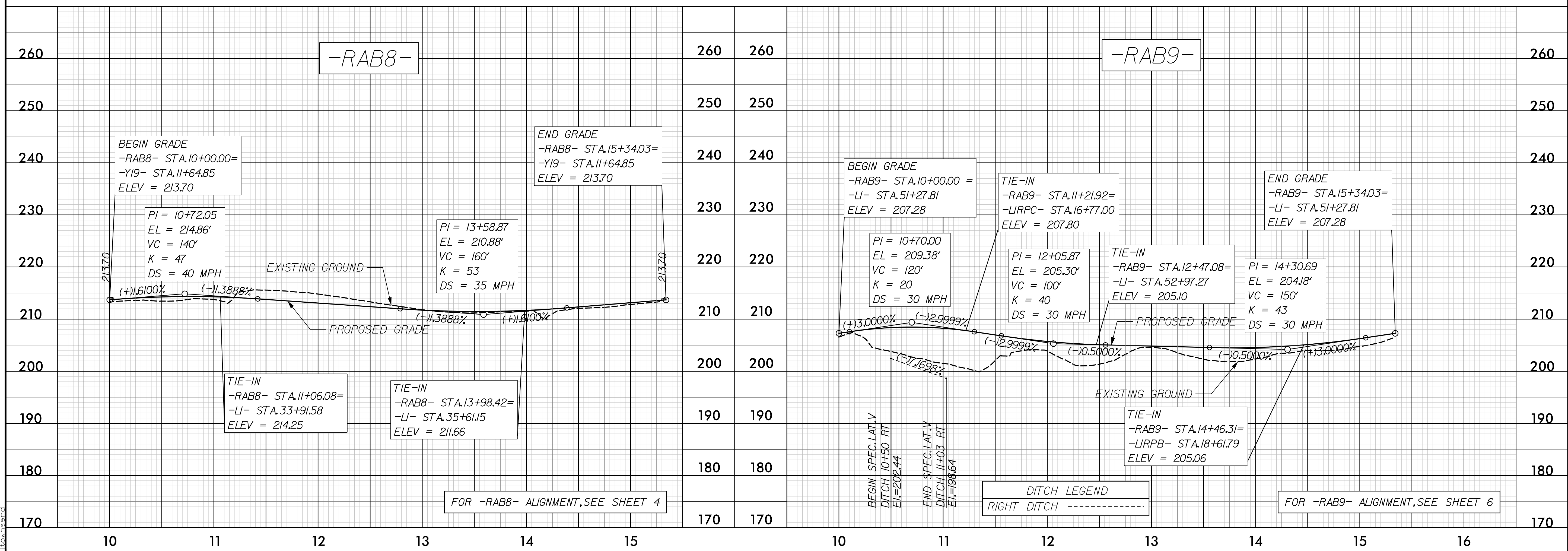


PROJECT REFERENCE NO. U-5996	SHEET NO. 15
ROADWAY DESIGN ENGINEER SEAL 033822 WATHAN P. SOLA 11/30/2021	HYDRAULICS ENGINEER SEAL 033246 WANDA M. JOHNS 11/30/2021

DOCUMENT NOT CONSIDERED FINAL UNLESS ALL SIGNATURES COMPLETED



1/3/2021  
15966.dwg\_p1\_psh15.dgn







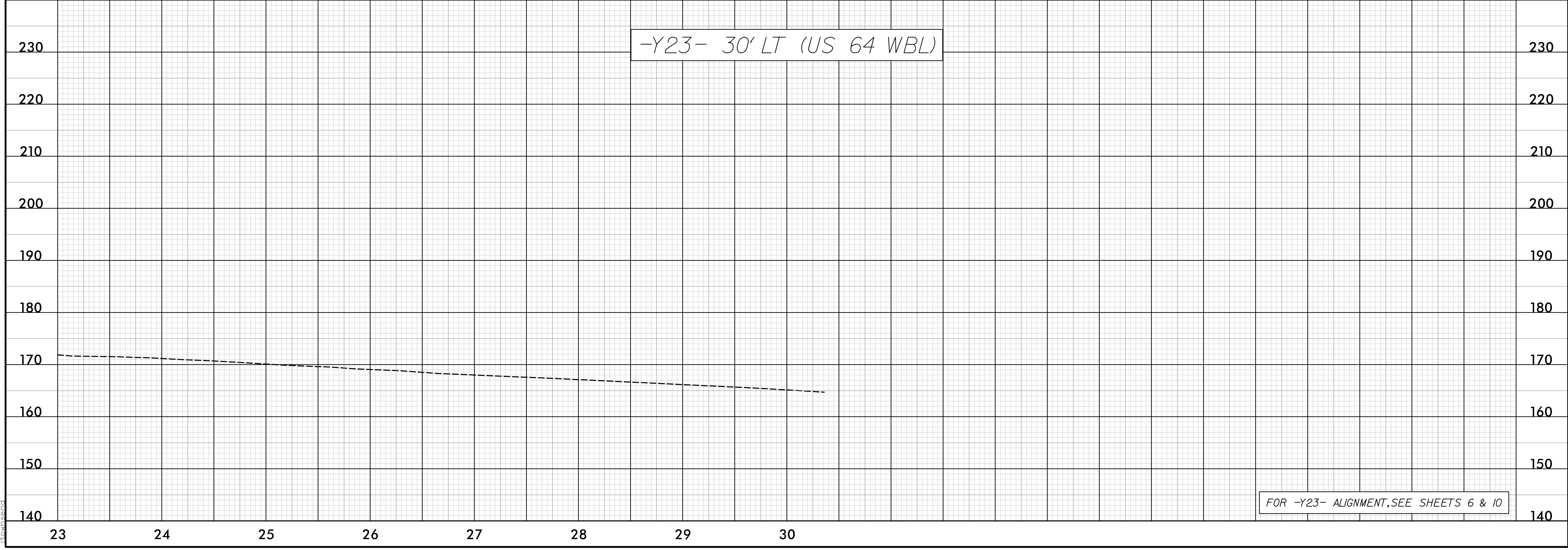
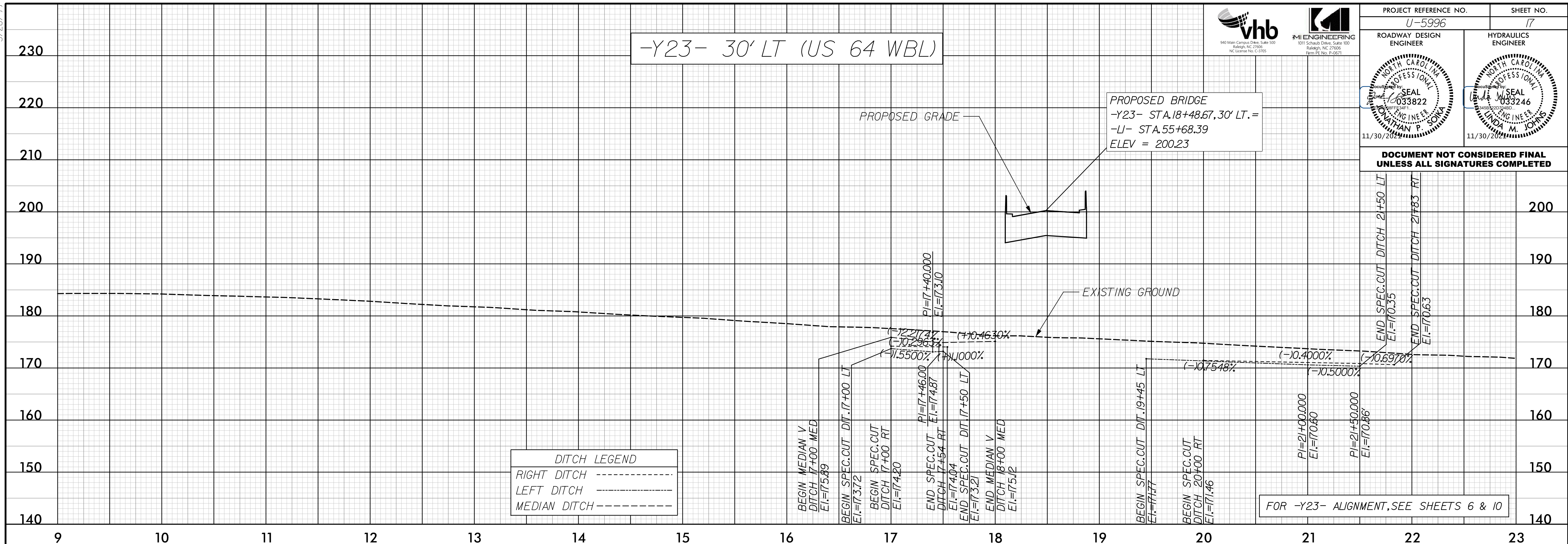


5/28/99



PROJECT REFERENCE NO. U-5996	SHEET NO. 17
ROADWAY DESIGN ENGINEER SEAL 033822 11/30/2011 WATHAN P. SOUSA	HYDRAULICS ENGINEER SEAL 033246 11/30/2011 WANDA M. JOHNS

DOCUMENT NOT CONSIDERED FINAL UNLESS ALL SIGNATURES COMPLETED



1/3/2021 15:56:06 du\_pfl\_psh17.dgn

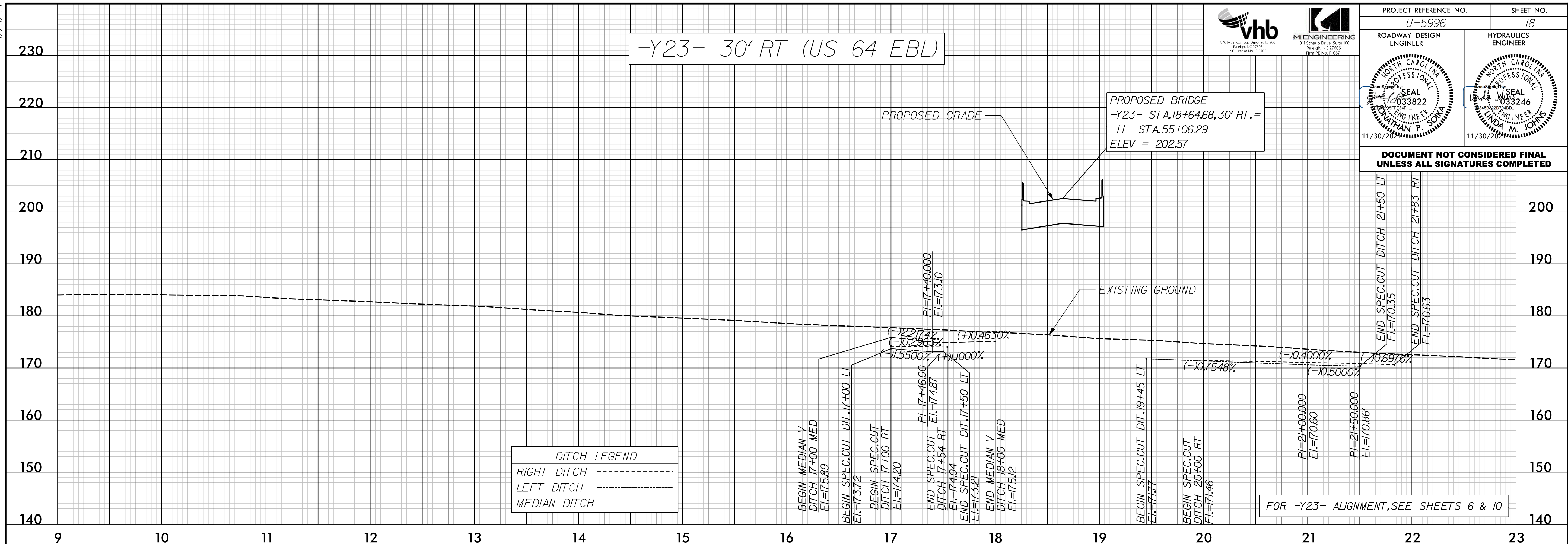


5/28/99

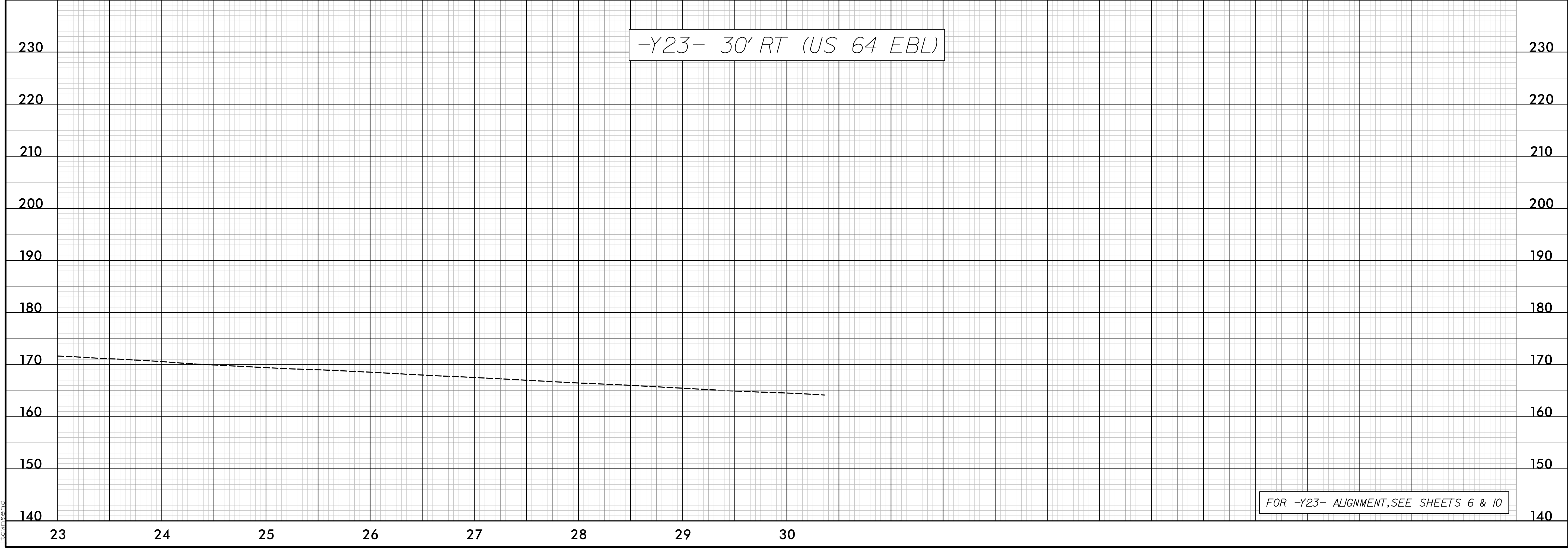


PROJECT REFERENCE NO. U-5996	SHEET NO. 18
ROADWAY DESIGN ENGINEER SEAL 033822 WATKIN P. JOYA 11/30/2011	HYDRAULICS ENGINEER SEAL 033246 WANDA M. JOHNS 11/30/2011

DOCUMENT NOT CONSIDERED FINAL UNLESS ALL SIGNATURES COMPLETED

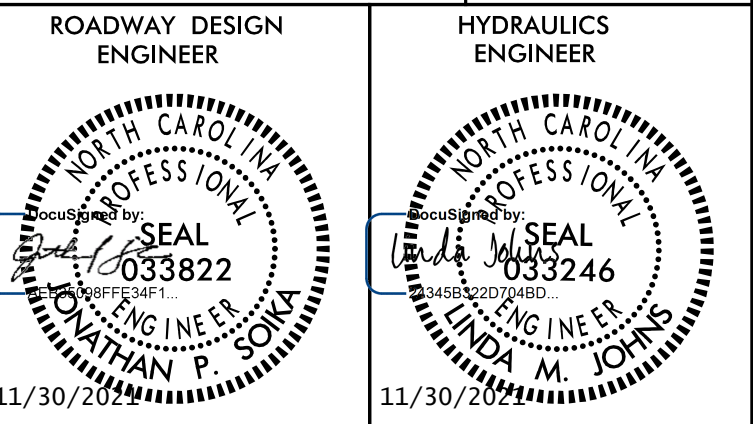


1/3/2021 15:56:06 du\_pfl\_psh18.dgn

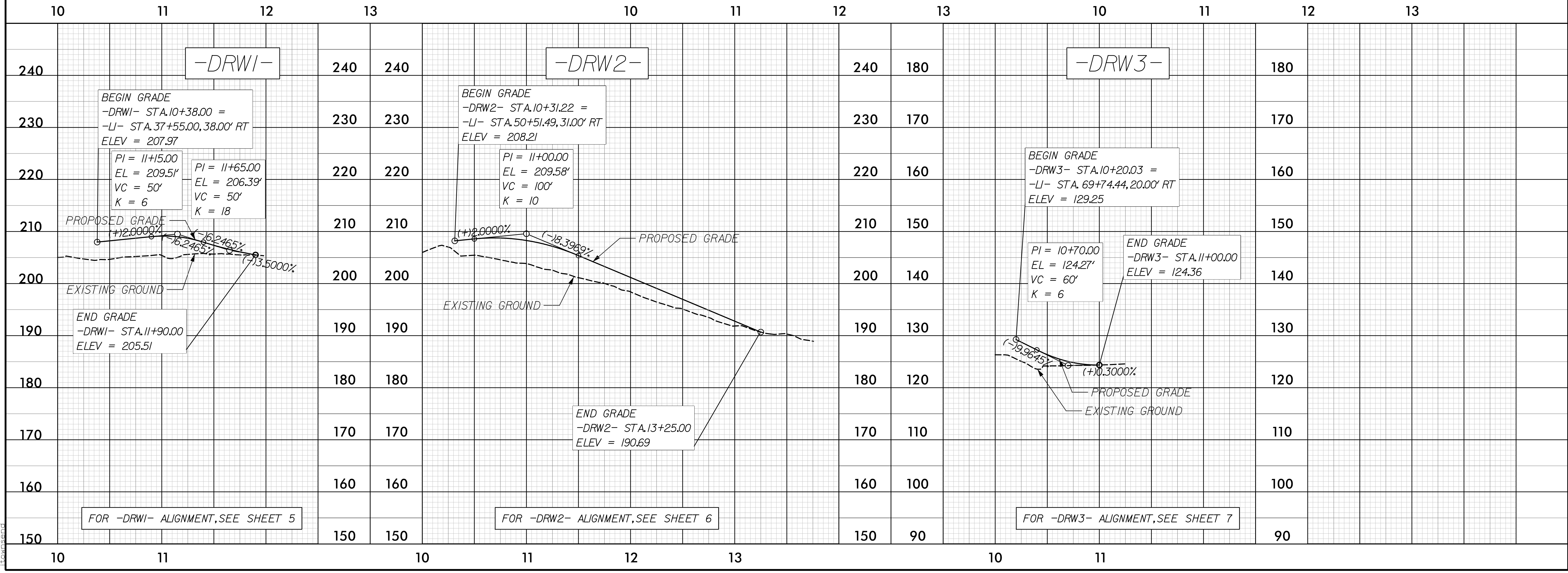
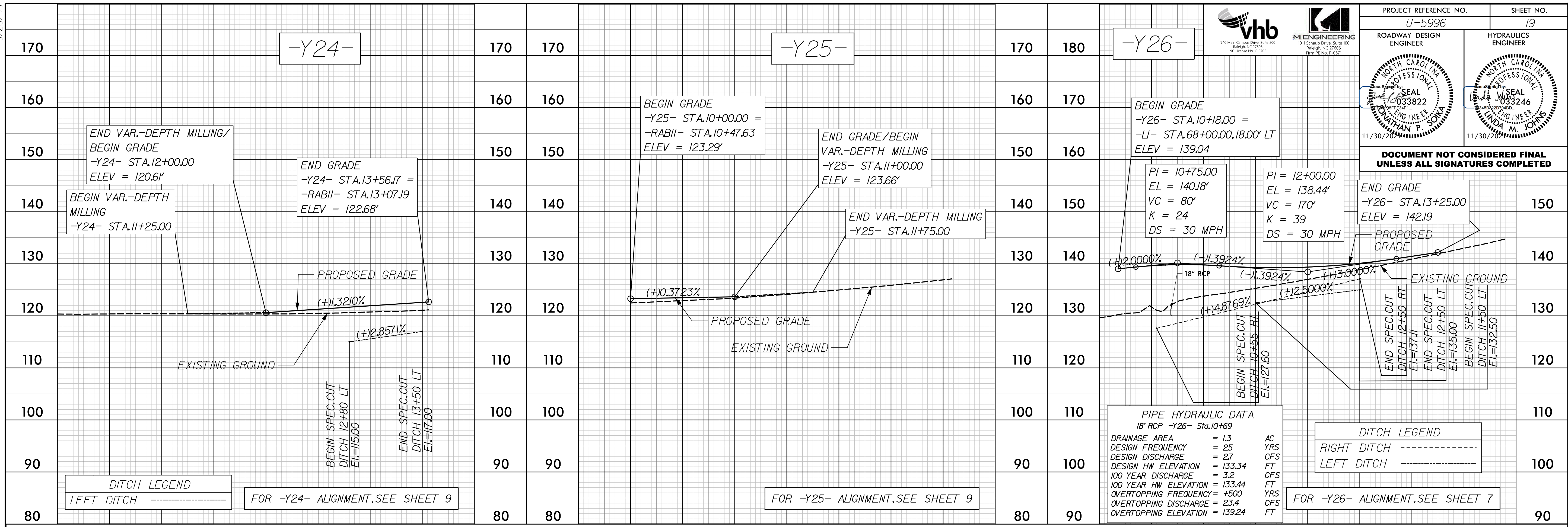




5/28/19



DOCUMENT NOT CONSIDERED FINAL UNLESS ALL SIGNATURES COMPLETED



1/3/2021 15:56:06 du\_p1\_psh19.dgn