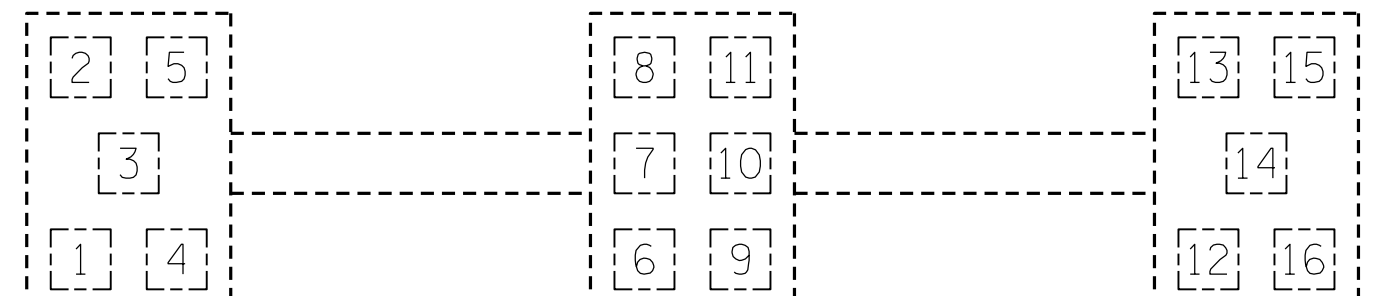
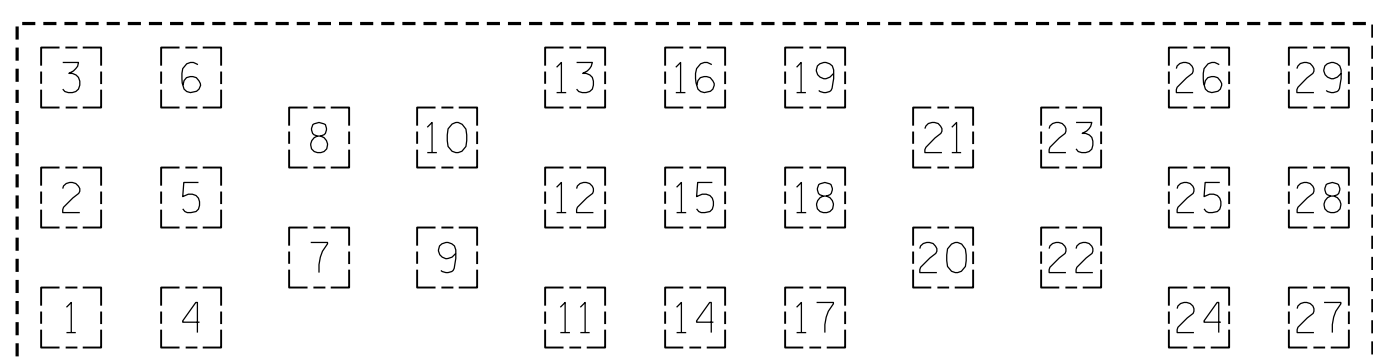


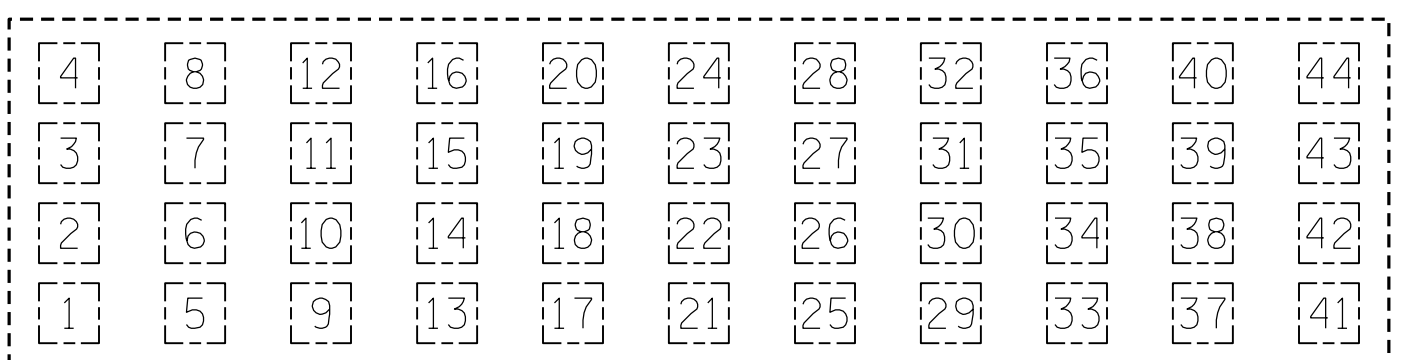
BENTS 1-6 & 28-35



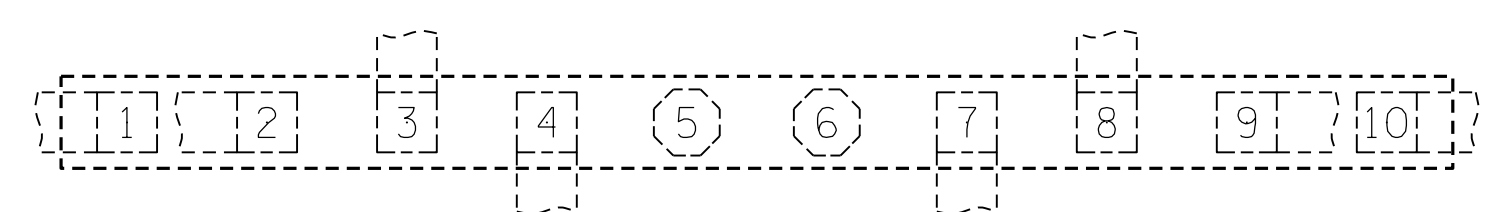
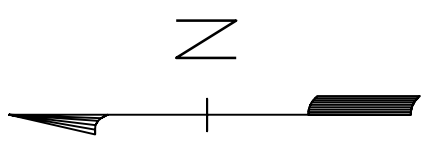
BENTS 7-12 & 21-27



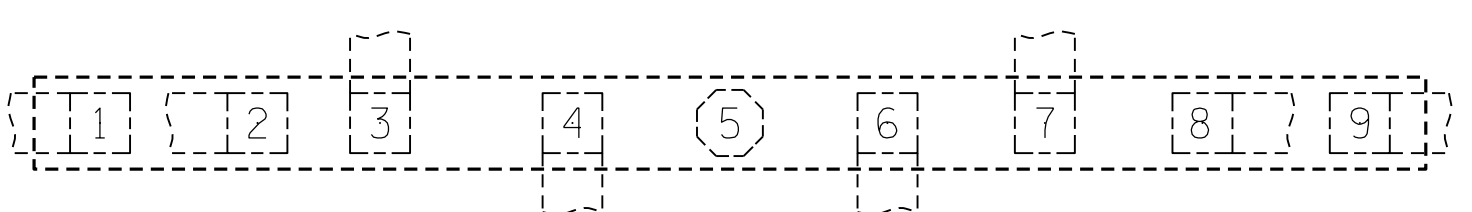
BENTS 13-15 & 18-20



BENTS 16 & 17

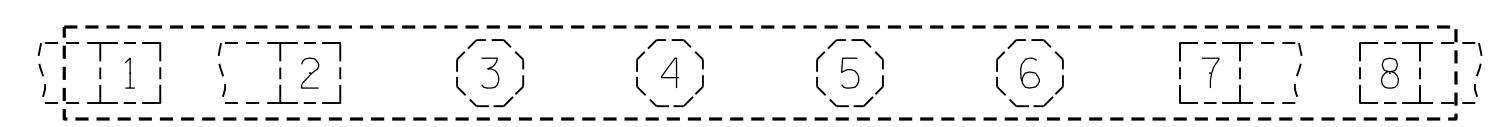


BENTS 36-38

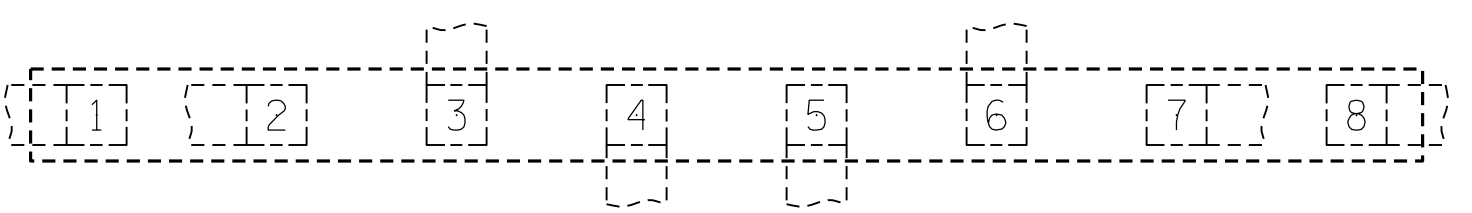


BENTS 39-41

DIRECTION OF STATIONING ↑



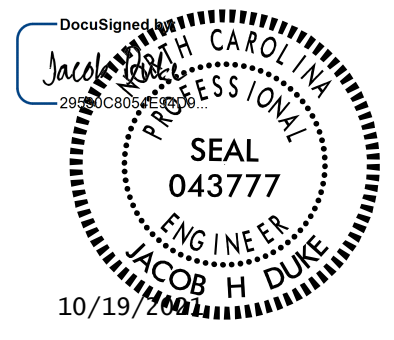
BENTS 42, 44-47, 49-52, 54-57, 59-62, 64-67, 69-72



BENT 43, 48, 53, 58, 63, 68

PILE NUMBERING SCHEME

PROJECT NO. 15BPR.46
DARE COUNTY
 BRIDGE NO. 270012



STATE OF NORTH CAROLINA DEPARTMENT OF TRANSPORTATION RALEIGH						SHEET NO.
PILE NUMBERING SEQUENCE						S-63
REVISIONS						TOTAL SHEETS
NO.	BY:	DATE:	NO.	BY:	DATE:	137
1			3			
2			4			

DRAWN BY : JACOB H. DUKE DATE : 9/30/2020
 CHECKED BY : DIEGO AGUIRRE DATE : 10/1/2020
 DESIGN ENGINEER OF RECORD: JACOB H. DUKE DATE : 10/1/2020

DOCUMENT NOT CONSIDERED
 FINAL UNLESS ALL
 SIGNATURES COMPLETED