

ROADWAY

TOTAL BILL OF MATERIAL

	BORROW EXCAVATION	AGGREGATE BASE COURSE	MILLING ASPHALT PAVEMENT, 1/2" TO 3"	ASPHALT CONC SURFACE COURSE, TYPE S9.5C	ASPHALT BINDER FOR PLANT MIX	SHOULDER BERM GUTTER	REMOVE & RESET EXISTING GUARDRAIL	WORK ZONE SIGNS (PORTABLE)	WORK ZONE SIGNS (BARRICADE MOUNTED)	FLASHING ARROW BOARD	PORTABLE CHANGEABLE MESSAGE SIGN	DRUMS	BARRICADES (TYPE III)	TMA	TEMPORARY RAISED PAVEMENT MARKERS	THERMOPLASTIC PAVEMENT MARKING LINES (4", 90 MILS)	COLD APPLIED PLASTIC PAVEMENT MARKING SYMBOL
	CU. YD.	TON	SQ. YD.	TON	TON	LIN. FT.	LIN. FT.	SQ. FT.	SQ. FT.	EA.	EA.	EA.	LIN. FT.	EA.	EA.	LIN. FT.	EA.
TOTAL	25	45	5101	660	40	240	240	690	102	9	2	880	128	2	4555	13332	12
	PAINT PAVEMENT MARKING LINES (4")	POLYUREA PAVEMENT MARKING LINES (4%, 30 MILS)	REMOVAL OF PAVEMENT MARKING LINES (4")	REMOVAL OF PAVEMENT MARKING LINES (8")	THERMO-PLASTIC RUMBLE BARS	PERMANENT RAISED PAVEMENT MARKERS	SEEDING & MULCHING										
	LIN. FT.	LIN. FT.	LIN. FT.	LIN. FT.	LIN. FT.	EA.	ACR										
TOTAL	78396	36305	21560	3984	3253	582	0.2										

STRUCTURES

TOTAL BILL OF MATERIAL

	FLOWABLE FILL	UNCLASSIFIED STRUCTURE EXCAVATION STA. -L- 65+52.10	RIP RAP, CLASS B	GEOTEXTILE FOR DRAINAGE	ELASTOMERIC BEARINGS	SHOTCRETE REPAIRS	EPOXY RESIN INJECTION	CONCRETE REPAIR	TSA FULL LENGTH (NON-MONITORING)	TSA FULL LENGTH (MONITORING)	EPOXY COATING	GROOVING BRIDGE FLOORS	CP SYSTEM - ZINC ALUMINUM SPRAY	2-BAR METAL RAIL REPAIRS	FOAM JOINT SEALS FOR PRESERVATION	CP INTEGRAL PILE JACKET (STRUCTURAL) 16 TO 30 IN.
	CU. YD.	LUMP SUM	TON	SQ. YD.	LUMP SUM	CU. FT.	LIN. FT.	CU. FT.	SQ. FT.	SQ. FT.	SQ. FT.	SQ. FT.	SQ. FT.	LIN. FT.	LIN. FT.	LIN. FT.
TOTAL	7.6	LUMP SUM	30	65	LUMP SUM	37	4043	3.0	29173	1862	24628	314624	14820	200	4545	300
	POLYESTER POLYMER CONCRETE MATERIALS	EPOXY POLYMER CONCRETE MATERIALS	BRIDGE JOINT REMOVAL	REPAIRS TO PRESTRESSED CONCRETE GIRDERS	SCARIFYING BRIDGE DECK	SHOT-BLASTING BRIDGE DECK	PLACING AND FINISHING POLYMER CONCRETE OVERLAY	TYPE I BRIDGE JACKING BRIDGE NO. 12	SPLICING OF PRESTRESSING STRAND	CATHODIC PROTECTION SYSTEM-SUBMERGED ZINC BULK ANODE						
	CU. YD.	CU. YD.	LIN. FT.	CU. FT.	SQ. YD.	SQ. YD.	SQ. YD.	EA.	EA.	EA.						
TOTAL	3322	3322	366	201	36967	36967	36967	165	15	382						

△ SEE NOTE

GENERAL NOTES

FOR MAINTENANCE OF WATER TRAFFIC, SEE SPECIAL PROVISIONS.
 FOR COORDINATION WITH THE US COAST GUARD, SEE SPECIAL PROVISIONS.
 FOR WORK IN, OVER OR ADJACENT TO NAVIGABLE WATERS, SEE SPECIAL PROVISIONS.
 FOR BRIDGE DECK RIDEABILITY AND GROOVING, SEE SPECIAL PROVISIONS.
 FOR OVERLAY SURFACE PREPARATION FOR POLYMER CONCRETE, SEE SPECIAL PROVISIONS.
 FOR POLYMER CONCRETE BRIDGE DECK OVERLAY, SEE SPECIAL PROVISIONS.
 FOR SHOTCRETE REPAIRS, SEE SPECIAL PROVISIONS.
 FOR CONCRETE REPAIRS, SEE PLAN DETAILS AND SPECIAL PROVISIONS.
 FOR EPOXY RESIN INJECTION, SEE SPECIAL PROVISIONS.
 FOR EPOXY COATING AND DEBRIS REMOVAL, SEE SPECIAL PROVISIONS.
 FOR FOAM JOINT SEALS FOR PRESERVATION, SEE SPECIAL PROVISIONS.
 FOR BRIDGE JOINT REMOVAL, SEE SPECIAL PROVISIONS.

△ FOR ALL PRESTRESSED CONCRETE GIRDER REPAIRS, SEE SPECIAL PROVISIONS FOR "PRESTRESSED CONCRETE GIRDERS WITH THERMAL SPRAY ANODE" (THIS INCLUDES GIRDERS WITH AND WITHOUT A THERMAL SPRAY APPLICATION).

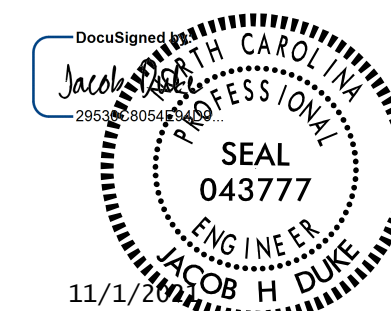
FOR BRIDGE JACKING, SEE SPECIAL PROVISIONS.
 THE CONTRACTOR IS REQUIRED TO SUBMIT JACKING PLANS PRIOR TO BEGINNING WORK.
 FOR STEEL REINFORCED ELASTOMERIC BEARINGS, SEE SPECIAL PROVISIONS.
 FOR CATHODIC PROTECTION INTEGRAL PILE JACKETS, SEE SPECIAL PROVISIONS.
 FOR CATHODIC PROTECTION SYSTEM - SUBMERGED ZINC BULK ANODE, SEE SPECIAL PROVISIONS.
 FOR CATHODIC PROTECTION SYSTEM - ZINC ALUMINUM SPRAY, SEE SPECIAL PROVISIONS.
 FOR PRESTRESSED CONCRETE GIRDERS WITH THERMAL SPRAY ANODE, SEE SPECIAL PROVISIONS.
 FOR 2-BAR METAL RAIL REPAIRS, SEE SPECIAL PROVISIONS.
 PAYMENT FOR CLEANING GUTTER FLUMES SHALL BE INCLUDED IN THE VARIOUS PAY ITEMS FOR THIS PROJECT.
 PAYMENT FOR INCIDENTAL ITEMS NOT SPECIFICALLY COVERED IN THE INDIVIDUAL BID ITEMS SHALL BE INCLUDED IN THE CONTRACT UNIT PRICE FOR THE VARIOUS BID ITEMS CONTAINED IN THE CONTRACT.
 REMOVAL OF EXISTING SHOULDER BERM GUTTER SHALL BE CONSIDERED INCIDENTAL TO THE VARIOUS PAY ITEMS IN THE CONTRACT.
 FOR OTHER GENERAL NOTES, SEE GENERAL DRAWING SHEET 7 OF 7.

THE CONTRACTOR'S ATTENTION IS CALLED TO THE EXISTING FISHING PIERS AT BENTS 9 - 12. THE CONTRACTOR IS RESPONSIBLE FOR REMOVING AND REPLACING ANY BOARDWALK MATERIAL THAT INTERFERES WITH THE INSTALLATION OF THE PROPOSED ANODES, OR ANY PROPOSED WORK AT THESE LOCATIONS. THIS WORK SHALL BE CONSIDERED INCIDENTAL TO THE VARIOUS PAY ITEMS IN THE CONTRACT. THE CONTRACTOR SHALL PHASE THE WORK AND LIMIT THE CLOSURE TO A SINGLE NORTH-SOUTH FINGER OF THE BOARDWALK AT ANY ONE TIME, SUCH THAT THE LONGER PORTION OF FISHING PIER ON THE NORTH SIDE OF THE BRIDGE AT THE WEST APPROACH REMAINS ACCESSIBLE FOR RECREATIONAL USE. THE CONTRACTOR SHALL ALSO BE RESPONSIBLE FOR MAINTAINING PEDESTRIAN ACCESS AROUND THE OTHER PORTIONS OF THE FISHING PIER DURING THE LIFE OF THE PROJECT.

AT THE TIME OF PREPARATION OF THESE PLANS, IT WAS NOT ANTICIPATED THAT ITEM(S) LISTED BELOW WOULD BE REQUIRED. HOWEVER, IT MAY BE DETERMINED IN THE FIELD THAT THE FOLLOWING ITEM(S) LISTED, OR OTHER WORK WILL BE NECESSARY TO PROPERLY COMPLETE THE INTENDED BRIDGE PRESERVATION/REHABILITATION WORK. THE CONTRACTOR SHALL BE PREPARED TO PERFORM SUCH WORK IN A TIMELY MANNER, AS DETERMINED IN THE FIELD. SUCH WORK SHALL BE CONSIDERED EXTRA WORK AND SHALL BE ADDRESSED AS PER ARTICLE 104-7 OF THE STANDARD SPECIFICATIONS. PROJECT SPECIAL PROVISIONS THAT OUTLINE REQUIREMENTS FOR THESE POTENTIAL ADDITIONAL WORK ITEMS HAVE BEEN PROVIDED IN THE PROJECT DOCUMENTS, BUT NO QUANTITIES HAVE BEEN LISTED. ACTUAL PAY ITEMS, QUANTITIES, AND COSTS WILL BE ESTABLISHED, AS REQUIRED, IF EXTRA WORK IS ENCOUNTERED. UNANTICIPATED ITEMS:

CONCRETE DECK REPAIR FOR POLYMER CONCRETE OVERLAY CLASS II SURFACE PREPARATION

PROJECT NO. 15BPR.46
DARE COUNTY
 BRIDGE NO. 270012



STATE OF NORTH CAROLINA DEPARTMENT OF TRANSPORTATION RALEIGH						BILL OF MATERIALS
REVISIONS						SHEET NO.
NO.	BY:	DATE:	NO.	BY:	DATE:	S-1
1			3			TOTAL SHEETS
2			4			137

DRAWN BY : JACOB H. DUKE DATE : 9/30/2020
 CHECKED BY : DIEGO A. AGUIRRE DATE : 10/1/2020
 DESIGN ENGINEER OF RECORD: JACOB H. DUKE DATE : 10/1/2020

DOCUMENT NOT CONSIDERED
FINAL UNLESS ALL
SIGNATURES COMPLETED