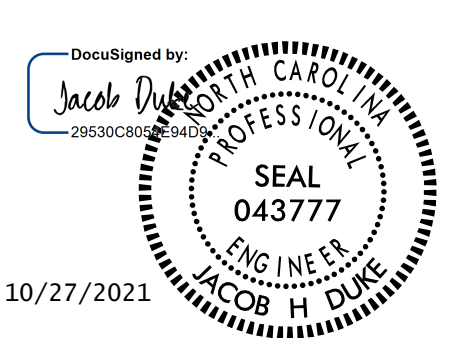


T.I.P.: 15BPR.46

**STATE OF NORTH CAROLINA
DEPARTMENT OF TRANSPORTATION**

**PAVEMENT MARKING PLAN
DARE COUNTY**

TIP NO. 15BPR.46	SHEET NO. PMP - 1
APPROVED: _____	
DATE: _____	
SEAL	
	
DOCUMENT NOT CONSIDERED FINAL UNLESS ALL SIGNATURES COMPLETED	

INDEX

SHEET NO.	DESCRIPTION
PMP-1	PAVEMENT MARKING PLAN TITLE AND SCHEDULE SHEET
PMP-2 THRU PMP-6	PAVEMENT MARKING DETAILS

GENERAL NOTES

- THE FOLLOWING GENERAL NOTES APPLY AT ALL TIMES FOR THE DURATION OF THE CONSTRUCTION PROJECT, EXCEPT WHEN OTHERWISE NOTED IN THE PLAN, OR DIRECTED BY THE ENGINEER.
- A) INSTALL PAVEMENT MARKINGS AND PAVEMENT MARKERS ON THE FINAL SURFACE AS FOLLOWS:

ROAD NAME	MARKING	MARKER
US 64/VIRGINIA DARE TRAIL	POLYUREA/THERMOPLASTIC	RAISED
 - B) TIE PROPOSED PAVEMENT MARKING LINES TO EXISTING PAVEMENT MARKING LINES.
 - C) REMOVE/REPLACE ANY CONFLICTING/DAMAGED PAVEMENT MARKINGS AND MARKERS.
 - D) REMOVE ALL RESIDUE AND SURFACE LAITANCE BY ACCEPTABLE METHODS ON CONCRETE BRIDGE DECKS PRIOR TO PLACING POLYUREA PAVEMENT MARKING MATERIAL.
 - E) UNLESS OTHERWISE SPECIFIED, HEATED-IN-PLACE THERMOPLASTIC MAY BE USED IN LIEU OF EXTRUDED THERMOPLASTIC FOR STOP BARS, SYMBOLS, CHARACTERS AND DIAGONALS. IF HEATED-IN-PLACE IS USED, IT SHALL BE PAID FOR USING THE EXTRUDED THERMOPLASTIC PAY ITEM.
 - F) UNLESS OTHERWISE SPECIFIED, HEATED-IN-PLACE THERMOPLASTIC MAY BE USED IN LIEU OF COLD APPLIED PLASTIC FOR STOP BARS, SYMBOLS, CHARACTERS AND DIAGONALS ON ASPHALT OR CONCRETE ROADWAYS. IF HEATED-IN-PLACE IS USED, IT SHALL BE PAID FOR USING THE COLD APPLIED PAY ITEM.
 - G) SEE SPECIAL PROVISIONS FOR THERMOPLASTIC RUMBLE BARS.

ROADWAY STANDARD DRAWING

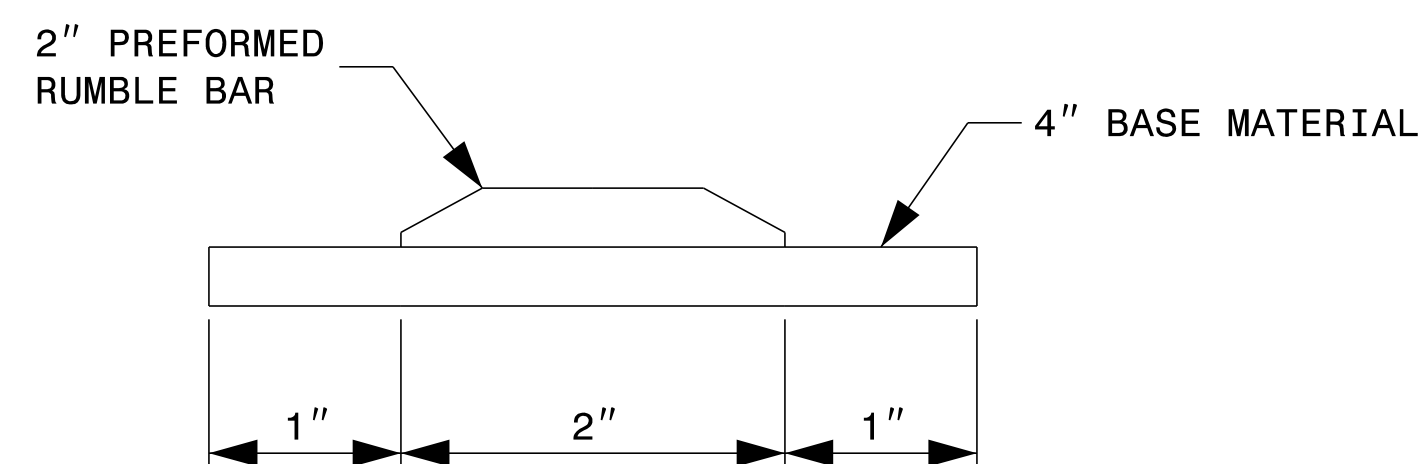
THE FOLLOWING ROADWAY STANDARDS AS APPEAR IN "ROADWAY STANDARD DRAWINGS" - PROJECT SERVICES UNIT - N.C. DEPARTMENT OF TRANSPORTATION - RALEIGH, N.C., DATED JANUARY 2018 ARE APPLICABLE TO THIS PROJECT AND BY REFERENCE HEREBY ARE CONSIDERED A PART OF THESE PLANS:

STD. NO.	TITLE
1205.01	PAVEMENT MARKINGS - LINE TYPES AND OFFSETS
1205.02	PAVEMENT MARKINGS - TWO-LANE AND MULTILANE ROADWAYS
1205.04	PAVEMENT MARKINGS - INTERSECTIONS
1205.05	PAVEMENT MARKINGS - TURN LANES
1205.08	PAVEMENT MARKINGS - SYMBOLS AND WORD MESSAGES
1205.09	PAVEMENT MARKINGS - PAINTED ISLANDS
1205.12	PAVEMENT MARKINGS - BRIDGES
1250.01	RAISED PAVEMENT MARKERS - INSTALLATION SPACING
1251.01	RAISED PAVEMENT MARKERS - PERMANENT AND TEMPORARY
1261.01	GUARDRAIL AND BARRIER DELINEATORS - INSTALLATION SPACING
1261.02	GUARDRAIL AND BARRIER DELINEATORS - TYPES AND MOUNTING
1262.01	GUARDRAIL END DELINEATION

PAVEMENT MARKING SCHEDULE

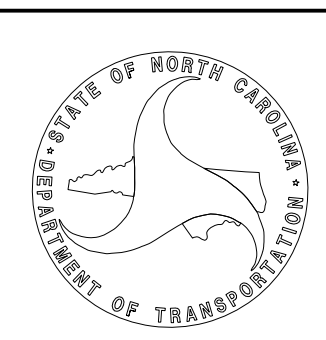
SYMBOL	DESCRIPTION	QUANTITY
T1	THERMOPLASTIC WHITE EDGELINE (4", 90 MIL)	2795 LF
T3	THERMOPLASTIC 10FT. WHITE SKIP (4", 90 MIL)	1144 LF
T4	THERMOPLASTIC 3FT.-9FT./SP WHITE MINISKIP (4", 90 MIL)	14 LF
T11	THERMOPLASTIC YELLOW SINGLE CENTER (4", 90 MIL)	3110 LF
T12	THERMOPLASTIC 10FT. YELLOW SKIP (4", 90 MIL)	778 LF
T13	THERMOPLASTIC YELLOW DOUBLE CENTER (4", 90 MIL)	5493 LF
RB	THERMOPLASTIC RUMBLE BARS	3253 LF
W1	POLYUREA WHITE EDGELINE (4", 30 MIL)	11139 LF
W3	POLYUREA 10FT. WHITE SKIP (4", 30 MIL)	2911 LF
W13	POLYUREA YELLOW DOUBLE CENTER (4", 30 MIL)	22255 LF
C70	COLD APPLIED PLASTIC LEFT TURN ARROW	12 EA
MA	PERMANENT RAISED MARKER (YELLOW/YELLOW)	374 EA
MB	PERMANENT RAISED MARKER (CRYSTAL/RED)	208 EA

THERMOPLASTIC RUMBLE BAR DETAIL



PLAN SUBMITTED TO:

DERRICK H. BEARD - SIGNING AND DELINEATION DESIGN ENGINEER



PLAN PREPARED BY: KISINGER CAMPO & ASSOCIATES

JACOB H. DUKE, PE PROJECT ENGINEER
JASON DEBONE PROJECT DESIGNER



NC FIRM LICENSE No: C-1506
301 Fayetteville St.,
Suite 1500
Raleigh, NC 27601
(919)882-7839