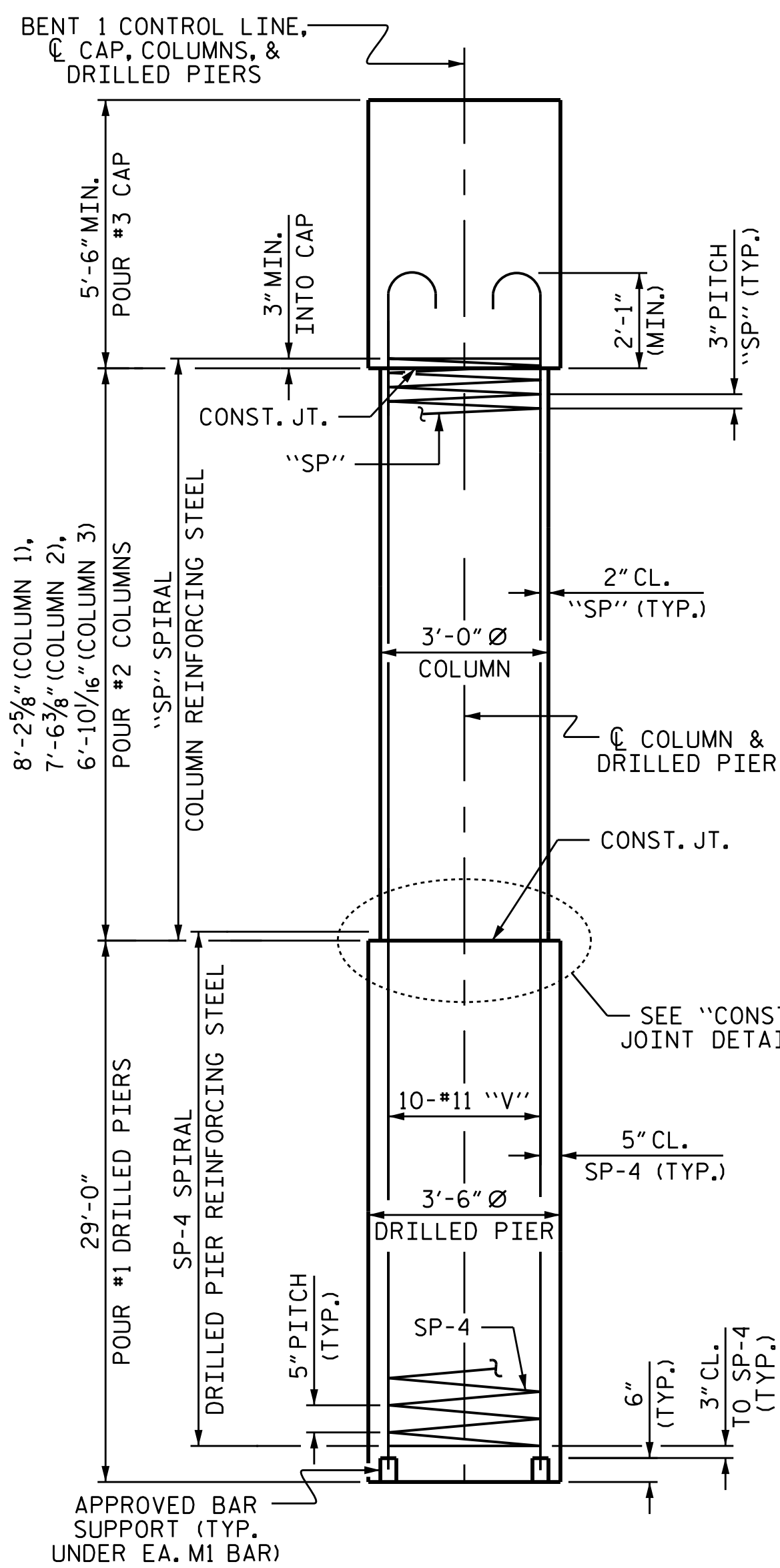
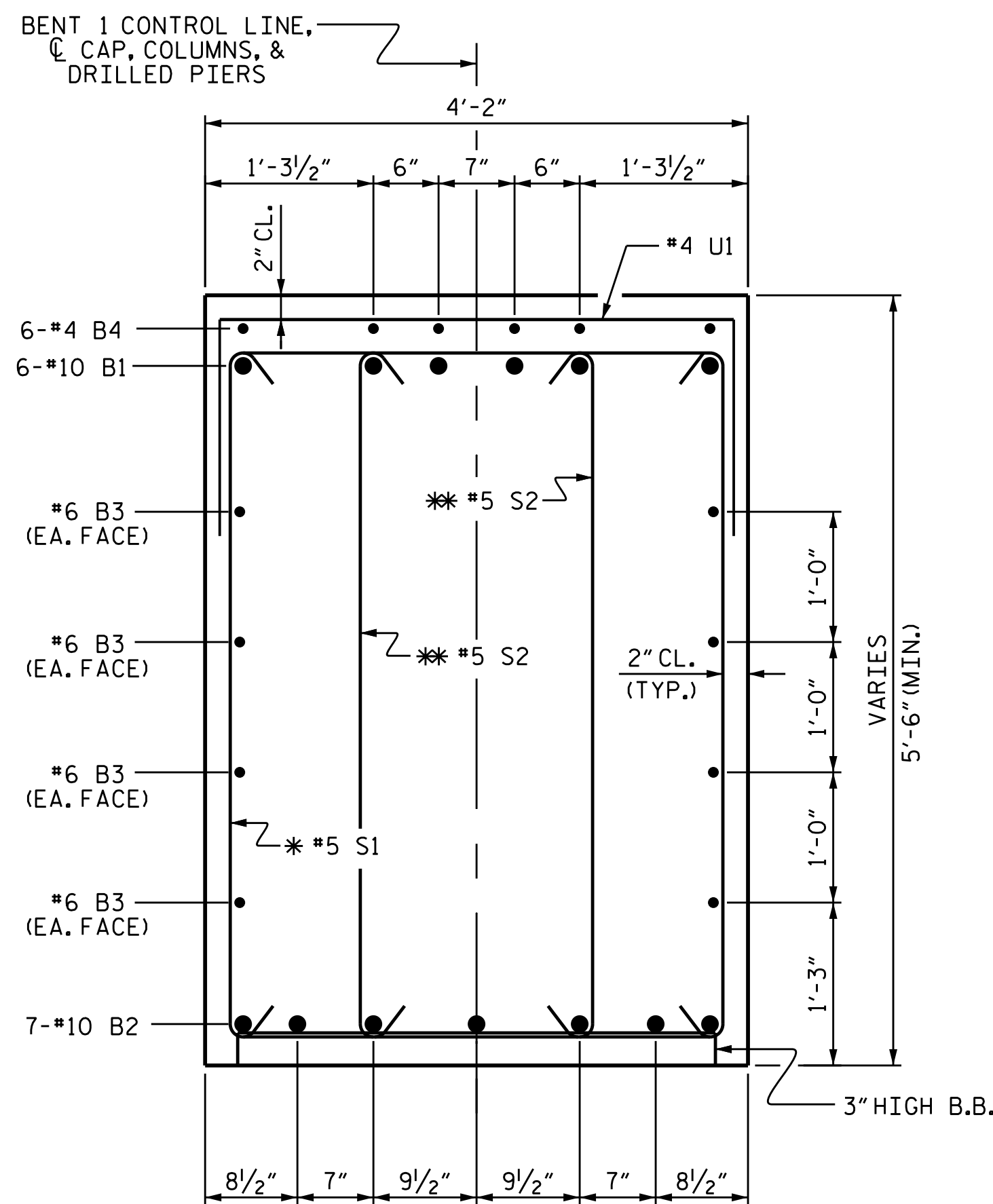


PLAN OF COLUMNS & DRILLED PIERS

DIMENSIONS AND REINFORCING STEEL ARE TYPICAL FOR EACH COLUMN & DRILLED PIER

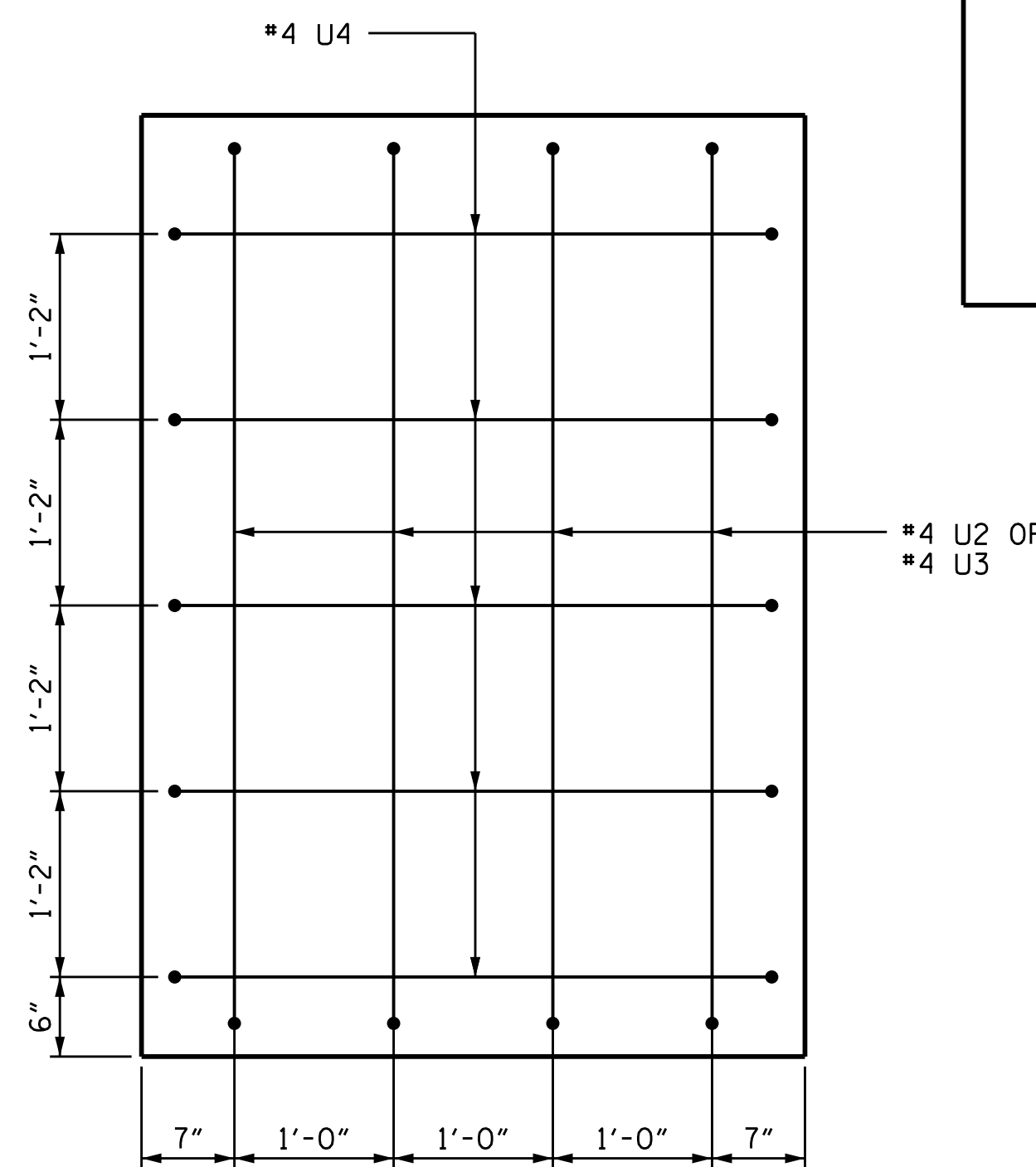


END ELEVATION



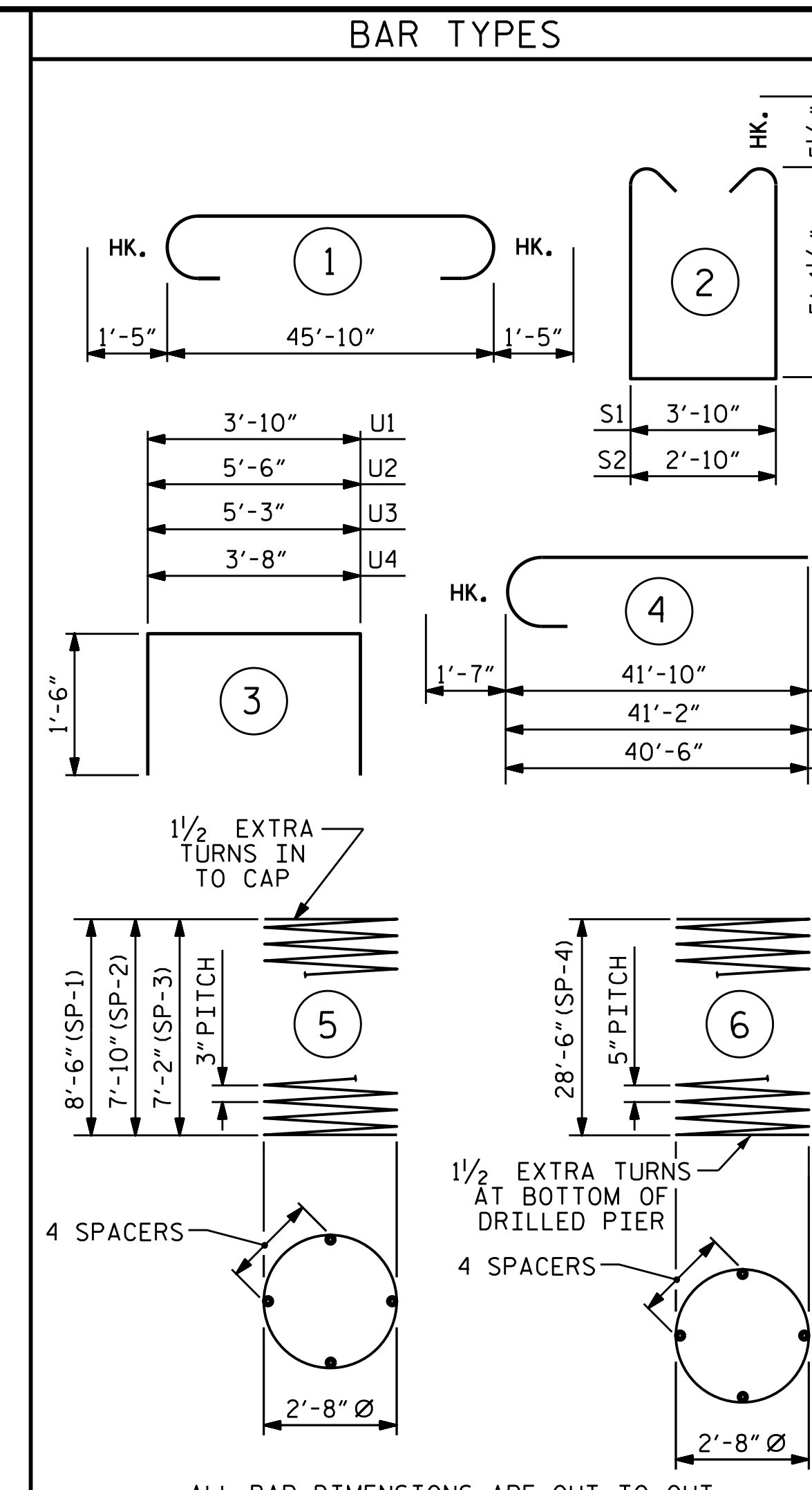
SECTION A-A

* INVERT ALTERNATE STIRRUPS
* INVERT ALTERNATE STIRRUPS PAIRS

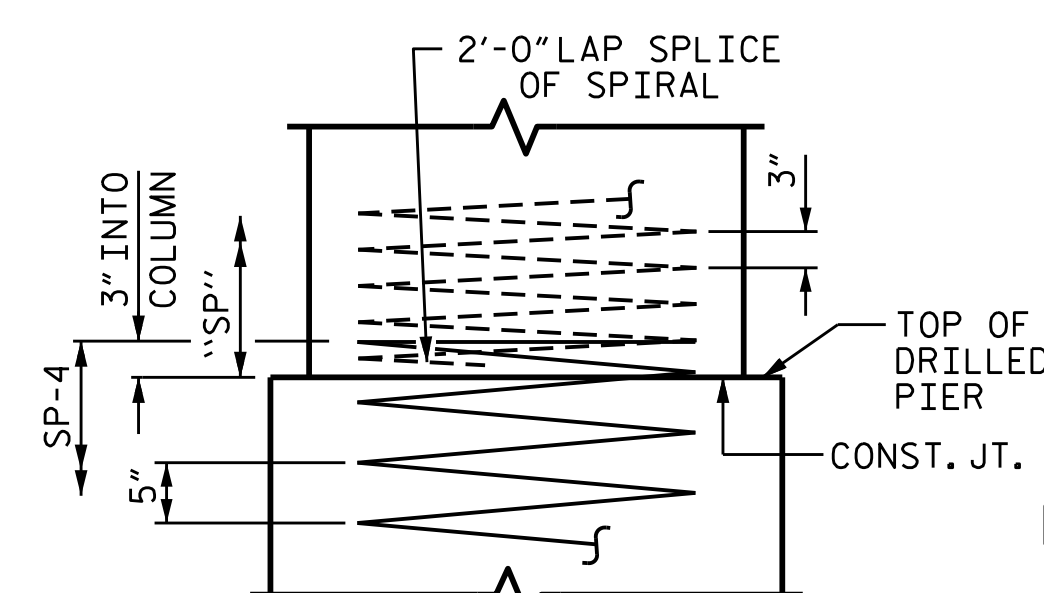


END VIEW

(TYP. EACH END)



ALL BAR DIMENSIONS ARE OUT TO OUT.



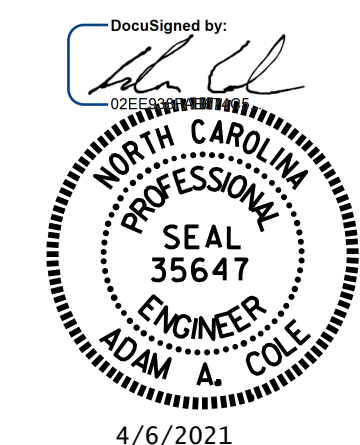
CONSTRUCTION JOINT DETAIL

BILL OF MATERIAL					
BAR NO.	NO.	SIZE	TYPE	LENGTH	WEIGHT
B1	6	#10	1	48'-8"	1256
B2	7	#10	STR	46'-0"	1386
B3	8	#6	STR	46'-0"	553
B4	30	#4	STR	3'-0"	60
S1	42	#5	2	15'-0"	657
S2	14	#5	2	14'-0"	204
U1	15	#4	3	6'-10"	68
U2	4	#4	3	8'-6"	23
U3	4	#4	3	8'-3"	22
U4	10	#4	3	6'-8"	45
V1	10	#11	4	43'-5"	2307
V2	10	#11	4	42'-9"	2277
V3	10	#11	4	42'-1"	2236
REINFORCING STEEL					LBS. 11,094
SP-1	1	*	5	292'-11"	196
SP-2	1	*	5	272'-4"	182
SP-3	1	*	5	249'-7"	167
SP-4	3	**	6	575'-9"	1802

SPIRAL COLUMN REINFORCING STEEL					LBS.
					2347
* THE SP-1, SP-2, & SP-3 SPIRAL REINFORCING STEEL SHALL BE W20 OR D-20 COLD DRAWN WIRE OR #4 PLAIN OR DEFORMED BAR.					
** THE SP-4 SPIRAL REINFORCING STEEL SHALL BE W31 OR D-31 COLD DRAWN WIRE OR #5 PLAIN OR DEFORMED BAR.					
CLASS A CONCRETE					
POUR #3 (CAP)					C.Y. 40.9
POUR #2 (COLUMNS)					C.Y. 6.3
TOTAL CLASS A CONCRETE					C.Y. 47.2

DRILLED PIER QUANTITIES		
DRILLED PIER CONCRETE		
POUR #1 (DRILLED PIERS)	C.Y.	31.0
3'-6" Ø DRILLED PIERS IN SOIL	LIN. FT.	52.00
3'-6" Ø DRILLED PIERS NOT IN SOIL	LIN. FT.	35.00
PERMANENT STEEL CASING FOR 3'-6" Ø DRILLED PIER	LIN. FT.	57.00
CSL TUBES	LIN. FT.	366

PROJECT NO. B-5813
CABARRUS COUNTY
 STATION: 21+85.00 -L-
 SHEET 2 OF 2



DRAWN BY : M.G. SHAIKH DATE : 09/2019
 CHECKED BY : H.A. LOCKLEAR DATE : 09/2019
 DESIGN ENGINEER OF RECORD: H.A. LOCKLEAR DATE : 08/2019

DOCUMENT NOT CONSIDERED FINAL UNLESS ALL SIGNATURES COMPLETED

REVISIONS						SHEET NO.
NO.	BY:	DATE:	NO.	BY:	DATE:	S-23
1			3			TOTAL SHEETS
2			4			29