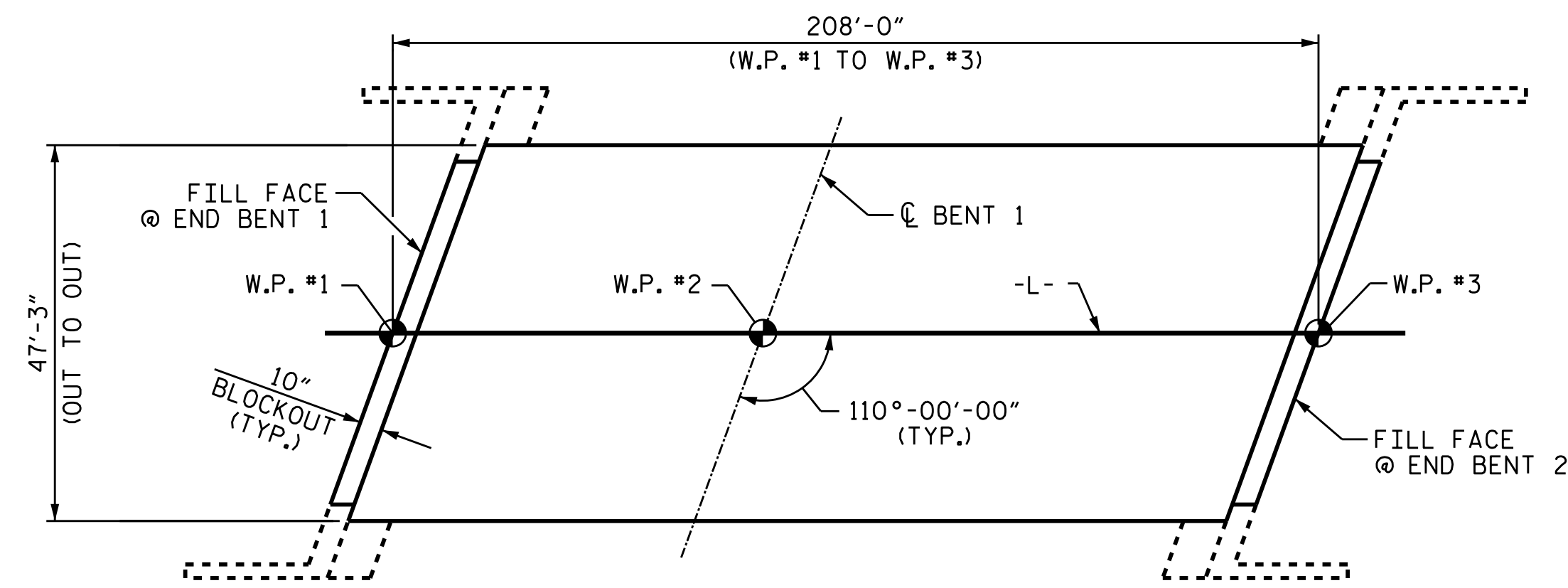
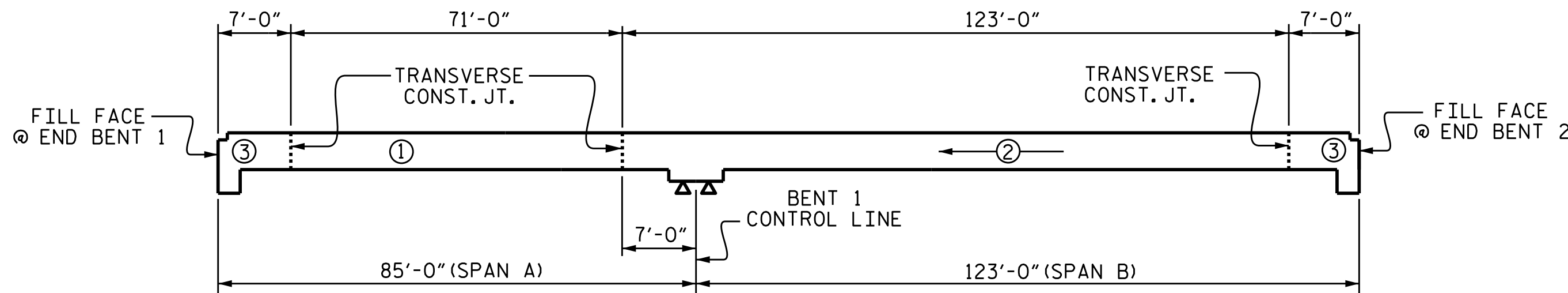


TRANSVERSE CONSTRUCTION JOINT DETAIL

NOTE: REINFORCING STEEL IN SLAB NOT SHOWN. LONGITUDINAL REINFORCING STEEL SHALL BE CONTINUOUS THRU JOINT

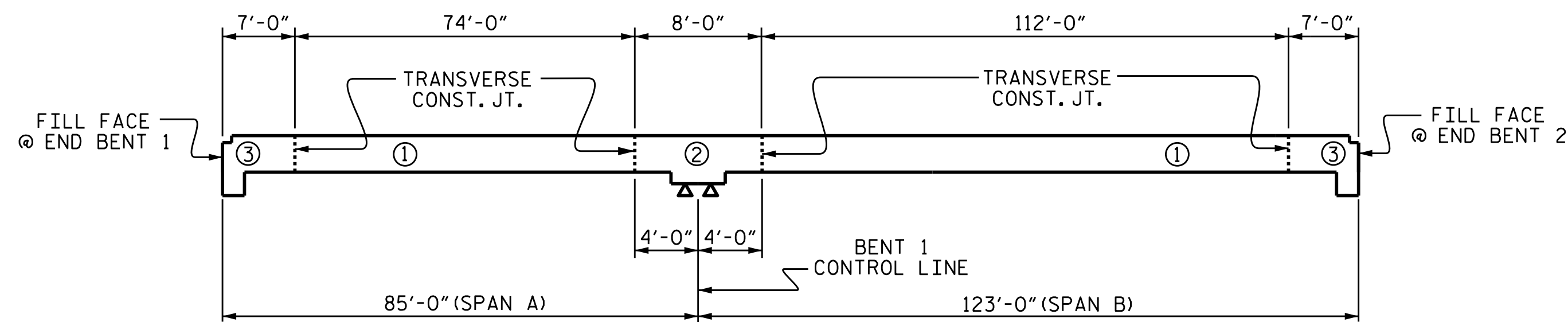


LAYOUT FOR COMPUTING AREA REINFORCED CONCRETE DECK SLAB (SQ. FT. = 9,744)



POUR SEQUENCE

① = INDICATES POUR NUMBER AND DIRECTION OF POUR

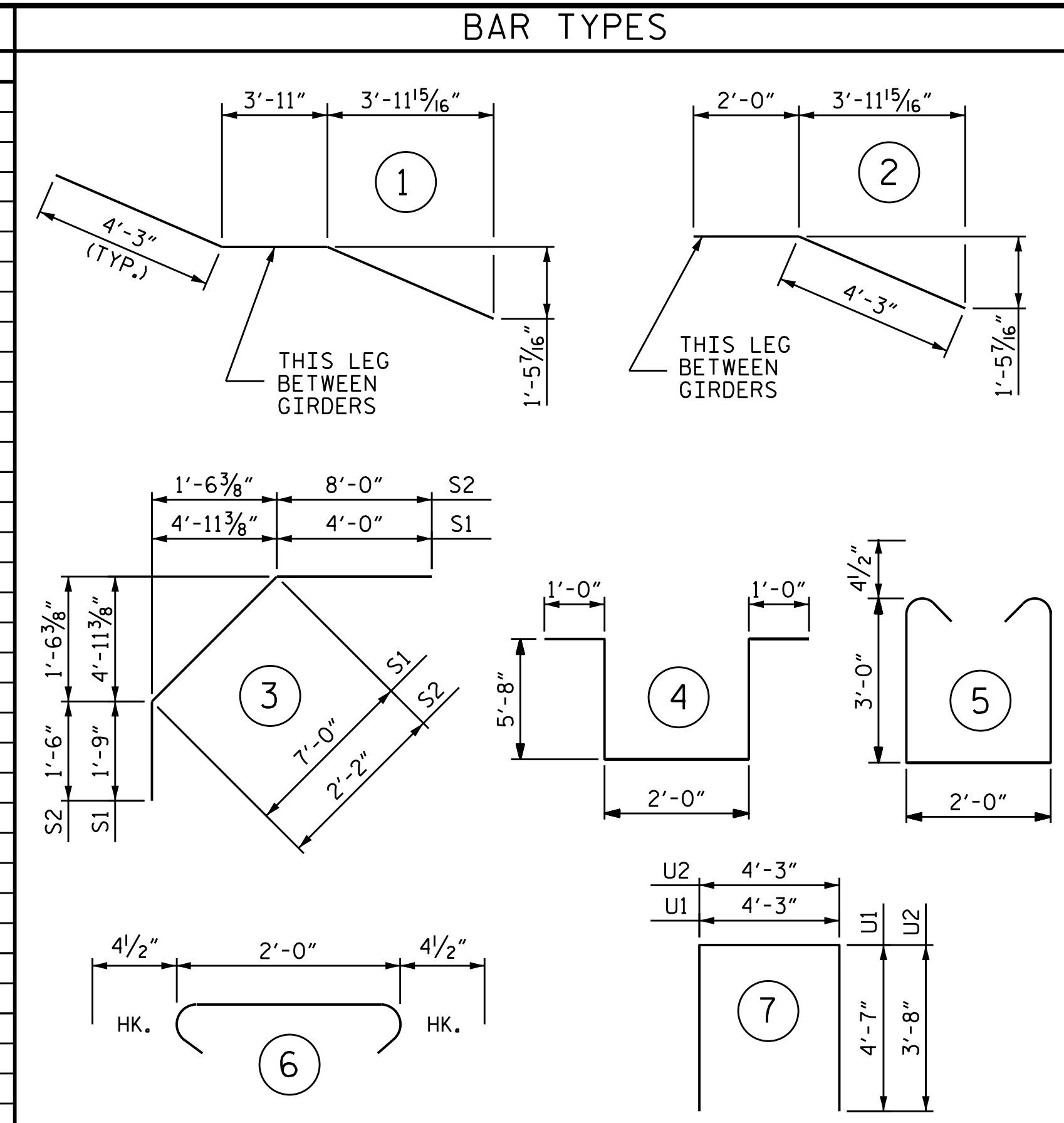


OPTIONAL POUR SEQUENCE

POUR ② CAN NOT BE STARTED UNTIL BOTH ADJACENT ① POURS REACH A MINIMUM OF 3,000 PSI.

BILL OF MATERIAL						BILL OF MATERIAL					
BAR	NO.	SIZE	TYPE	LENGTH	WEIGHT	BAR	NO.	SIZE	TYPE	LENGTH	WEIGHT
*A1	302	#5	STR	46'-11"	14,778	A214	2	#5	STR	23'-9"	50
A2	302	#5	STR	46'-11"	14,778	A215	2	#5	STR	22'-1"	46
						A216	2	#5	STR	20'-4"	42
*A101	2	#5	STR	46'-1"	96	A217	2	#5	STR	18'-7"	39
*A102	2	#5	STR	44'-4"	92	A218	2	#5	STR	16'-11"	35
*A103	2	#5	STR	42'-8"	89	A219	2	#5	STR	15'-2"	32
*A104	2	#5	STR	40'-11"	85	A220	2	#5	STR	13'-6"	28
*A105	2	#5	STR	39'-3"	82	A221	2	#5	STR	11'-9"	25
*A106	2	#5	STR	37'-6"	78	A222	2	#5	STR	10'-0"	21
*A107	2	#5	STR	35'-9"	75	A223	2	#5	STR	8'-4"	17
*A108	2	#5	STR	34'-1"	71	A224	2	#5	STR	6'-7"	14
*A109	2	#5	STR	32'-4"	67	A225	2	#5	STR	4'-11"	10
*A110	2	#5	STR	30'-8"	64	A226	2	#5	STR	3'-2"	7
*A111	2	#5	STR	28'-11"	60	A227	2	#5	STR	1'-5"	3
*A112	2	#5	STR	27'-2"	57						
*A113	2	#5	STR	25'-6"	53	*B1	125	#5	STR	17'-0"	2216
*A114	2	#5	STR	23'-9"	50	*B2	64	#4	STR	21'-8"	926
*A115	2	#5	STR	22'-1"	46	*B3	126	#5	STR	37'-6"	4928
*A116	2	#5	STR	20'-4"	42	*B4	62	#5	STR	32'-0"	2069
*A117	2	#5	STR	18'-7"	39	*B5	64	#4	STR	31'-1"	1329
*A118	2	#5	STR	16'-11"	35	*B6	125	#5	STR	24'-8"	3216
*A119	2	#5	STR	15'-2"	32	B7	136	#5	STR	53'-0"	7518
*A120	2	#5	STR	13'-6"	28						
*A121	2	#5	STR	11'-9"	25	K1	24	#4	STR	25'-10"	414
*A122	2	#5	STR	10'-0"	21	K2	4	#4	STR	2'-10"	8
*A123	2	#5	STR	8'-4"	17	K3	16	#4	STR	3'-8"	39
*A124	2	#5	STR	6'-7"	14	K4	4	#4	STR	2'-3"	6
*A125	2	#5	STR	4'-11"	10	K5	8	#4	STR	7'-8"	41
*A126	2	#5	STR	3'-2"	7	K6	32	#4	STR	9'-4"	200
*A127	2	#5	STR	1'-5"	3	K7	8	#4	STR	6'-2"	33
						K8	8	#4	STR	6'-4"	34
A201	2	#5	STR	46'-1"	96	K9	32	#4	STR	9'-4"	200
A202	2	#5	STR	44'-4"	92	K10	8	#4	STR	6'-7"	35
A203	2	#5	STR	42'-8"	89	K11	18	#4	1	12'-5"	149
A204	2	#5	STR	40'-11"	85	K12	12	#4	2	6'-3"	50
A205	2	#5	STR	39'-3"	82						
A206	2	#5	STR	37'-6"	78	*S1	56	#4	3	12'-9"	477
A207	2	#5	STR	35'-9"	75	*S2	56	#4	3	11'-8"	436
A208	2	#5	STR	34'-1"	71	S3	24	#4	4	15'-4"	246
A209	2	#5	STR	32'-4"	67	S4	8	#4	5	8'-9"	47
A210	2	#5	STR	30'-8"	64	S5	136	#4	6	2'-9"	250
A211	2	#5	STR	28'-11"	60						
A212	2	#5	STR	27'-2"	57	U1	56	#4	7	13'-5"	502
A213	2	#5	STR	25'-6"	53	U2	20	#4	7	11'-7"	155

REINFORCING STEEL	LBS.	26,043
* EPOXY COATED REINFORCING STEEL	LBS.	31,713



ALL BAR DIMENSIONS ARE OUT TO OUT.

SUPERSTRUCTURE BILL OF MATERIAL

	CLASS AA CONCRETE (CU. YDS.)	REINFORCING STEEL (LBS.)	EPOXY COATED REINFORCING STEEL (LBS.)
POUR #1	109.1		
POUR #2	207.1	26,043	31,713
POUR #3	107.1		
TOTALS**	423.4	26,043	31,713

** QUANTITIES FOR BARRIER RAIL IS NOT INCLUDED

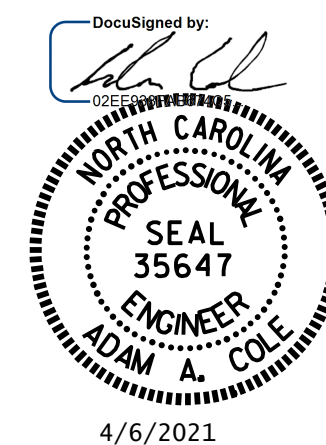
GROOVING BRIDGE FLOORS

APPROACH SLABS	2,021 SO.FT.
BRIDGE DECK	8,441 SO.FT.
TOTAL	10,462 SO.FT.

SUPERSTRUCTURE REINFORCING STEEL LENGTHS ARE BASED ON THE FOLLOWING MINIMUM SPLICE LENGTHS

BAR SIZE	SUPERSTRUCTURE EXCEPT APPROACH SLABS, PARAPETS, AND BARRIER RAILS		APPROACH SLABS		PARAPETS AND BARRIER RAILS
	EPOXY COATED	UNCOATED	EPOXY COATED	UNCOATED	
#4	1'-11"	1'-7"	1'-11"	1'-7"	2'-6"
#5	2'-5"	2'-0"	2'-5"	2'-0"	3'-1"
#6	2'-10"	2'-5"	3'-7"	2'-5"	3'-8"
#7	4'-2"	2'-9"			
#8	4'-9"	3'-2"			

PROJECT NO. B-5813
CABARRUS COUNTY
 STATION: 21+85.00 -L-



STATE OF NORTH CAROLINA
 DEPARTMENT OF TRANSPORTATION
 RALEIGH
 SUPERSTRUCTURE
 BILL OF MATERIAL

DRAWN BY : M. G. SHAIKH DATE: 07/2019
 CHECKED BY : H. LOCKLEAR DATE: 08/2019
 DESIGN ENGINEER OF RECORD : H. LOCKLEAR DATE: 06/2019

REVISIONS						SHEET NO. S-18
NO.	BY:	DATE:	NO.	BY:	DATE:	
1			3			TOTAL SHEETS 29
2			4			