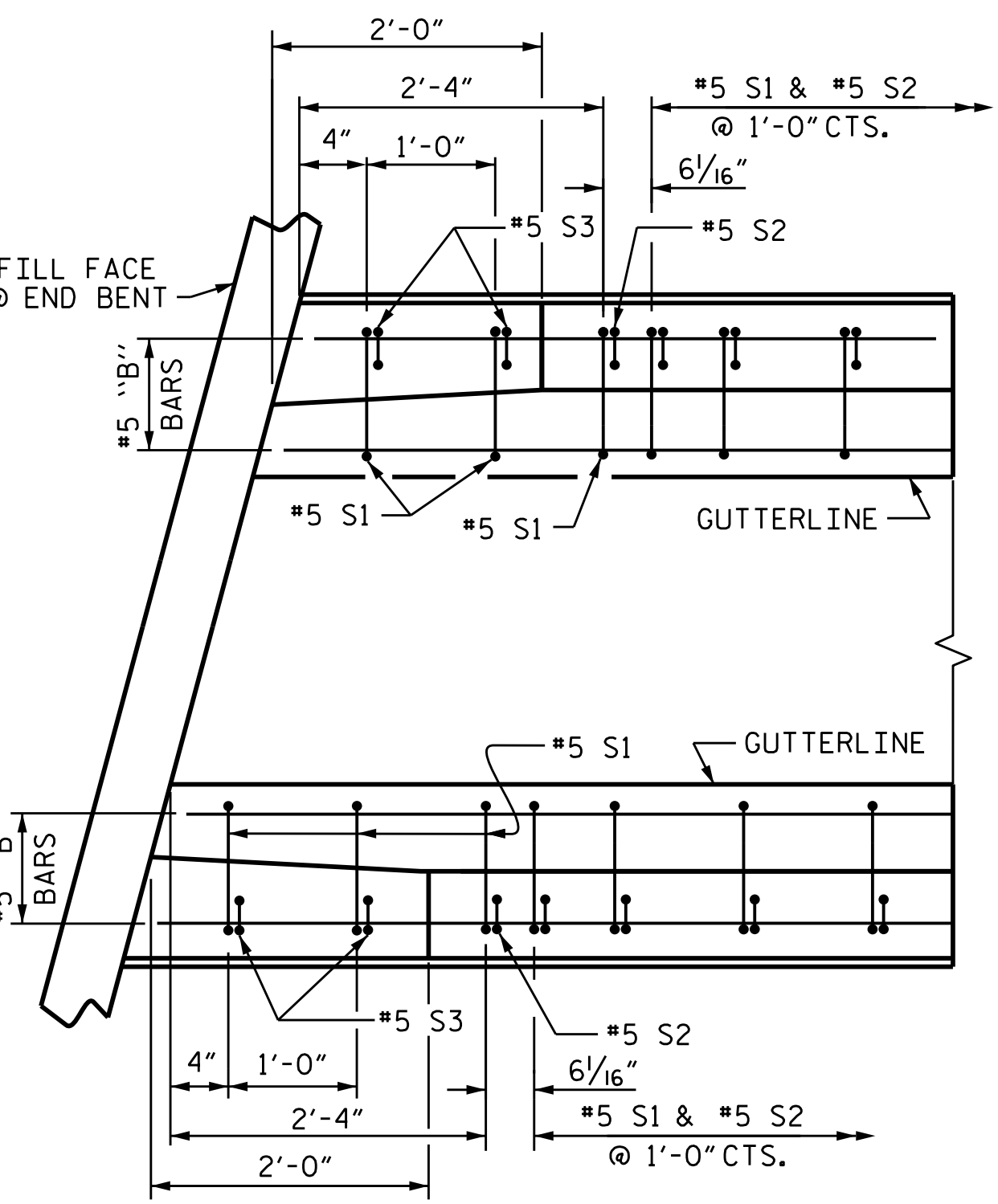
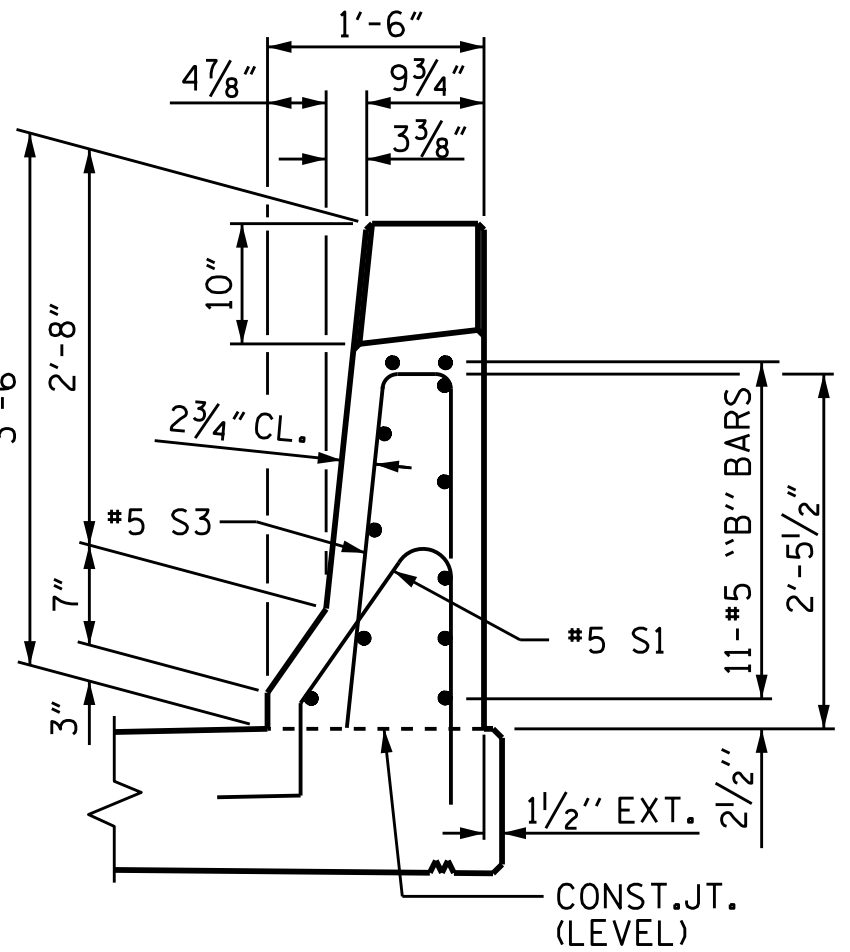


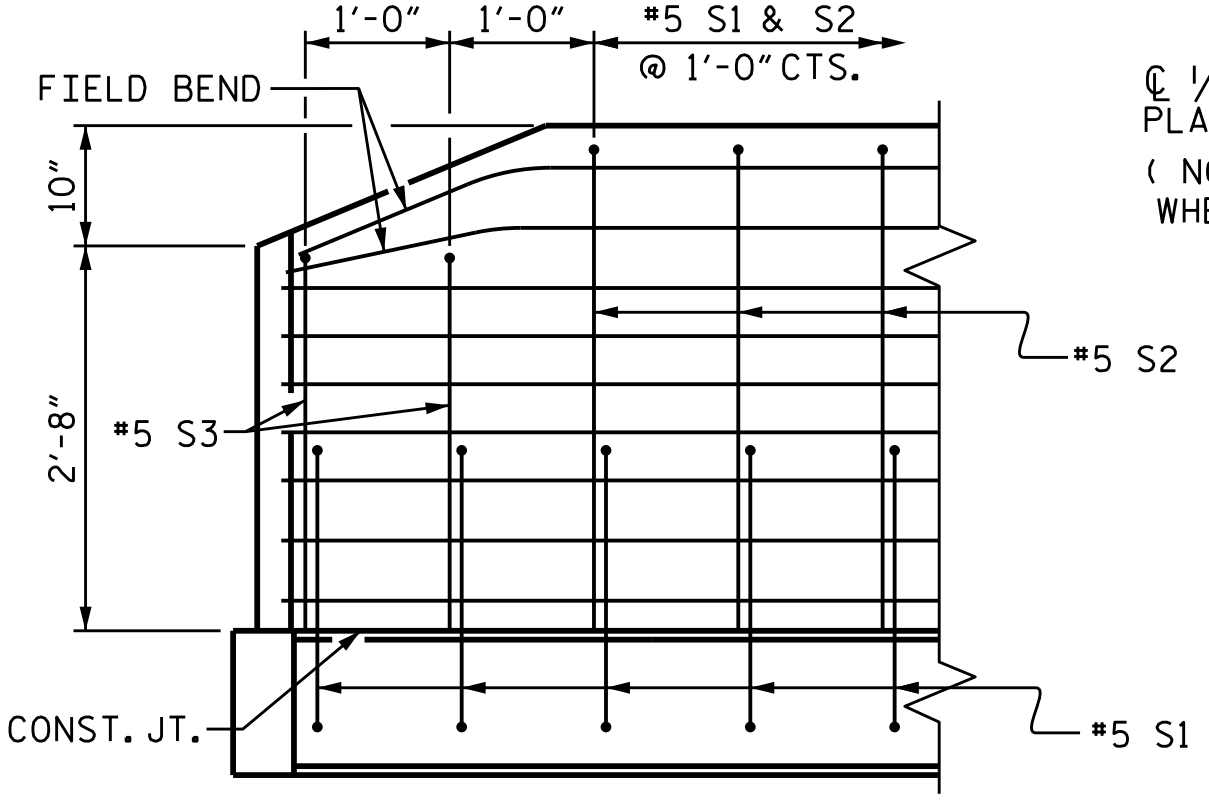
PLAN



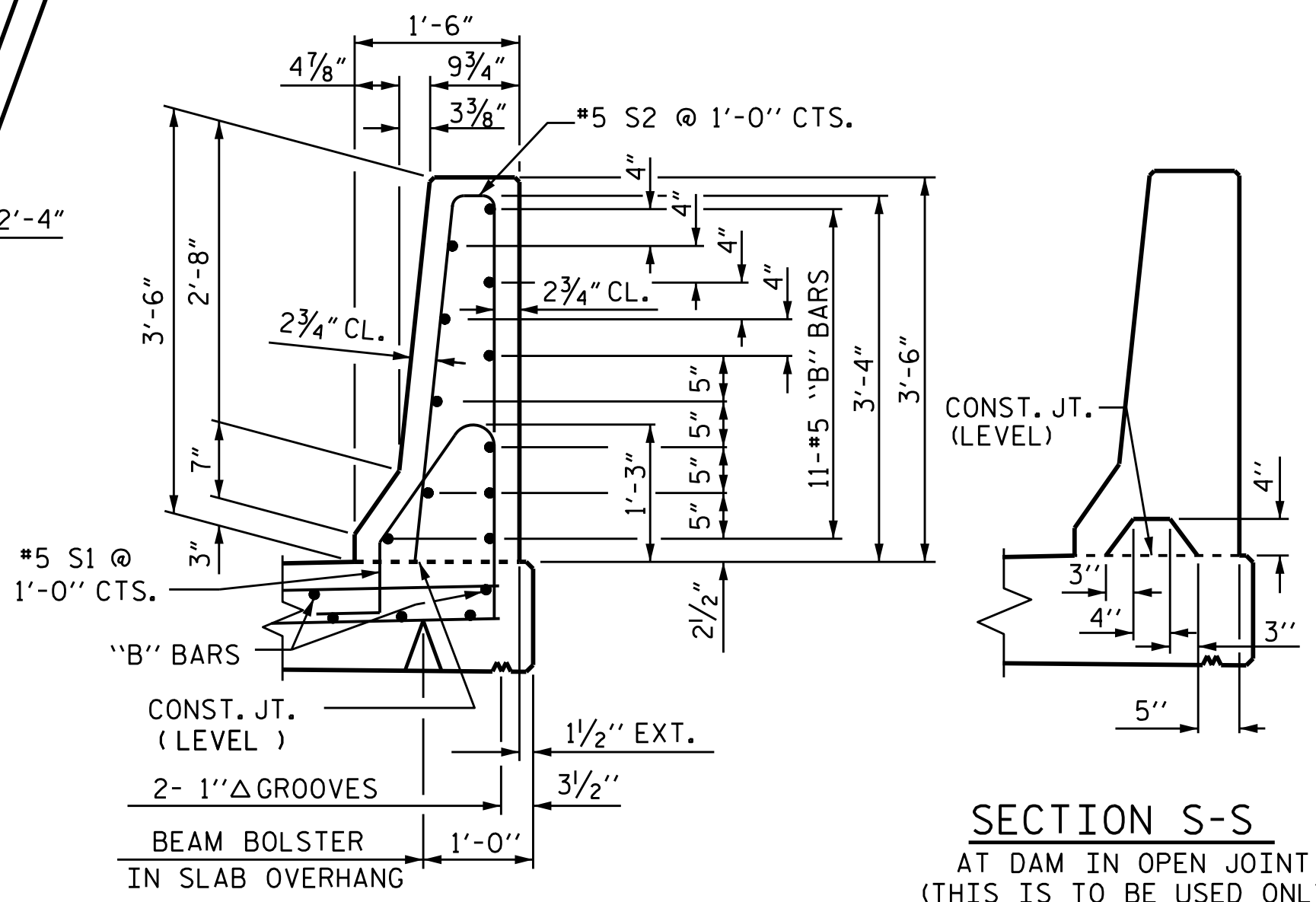
PLAN



END VIEW

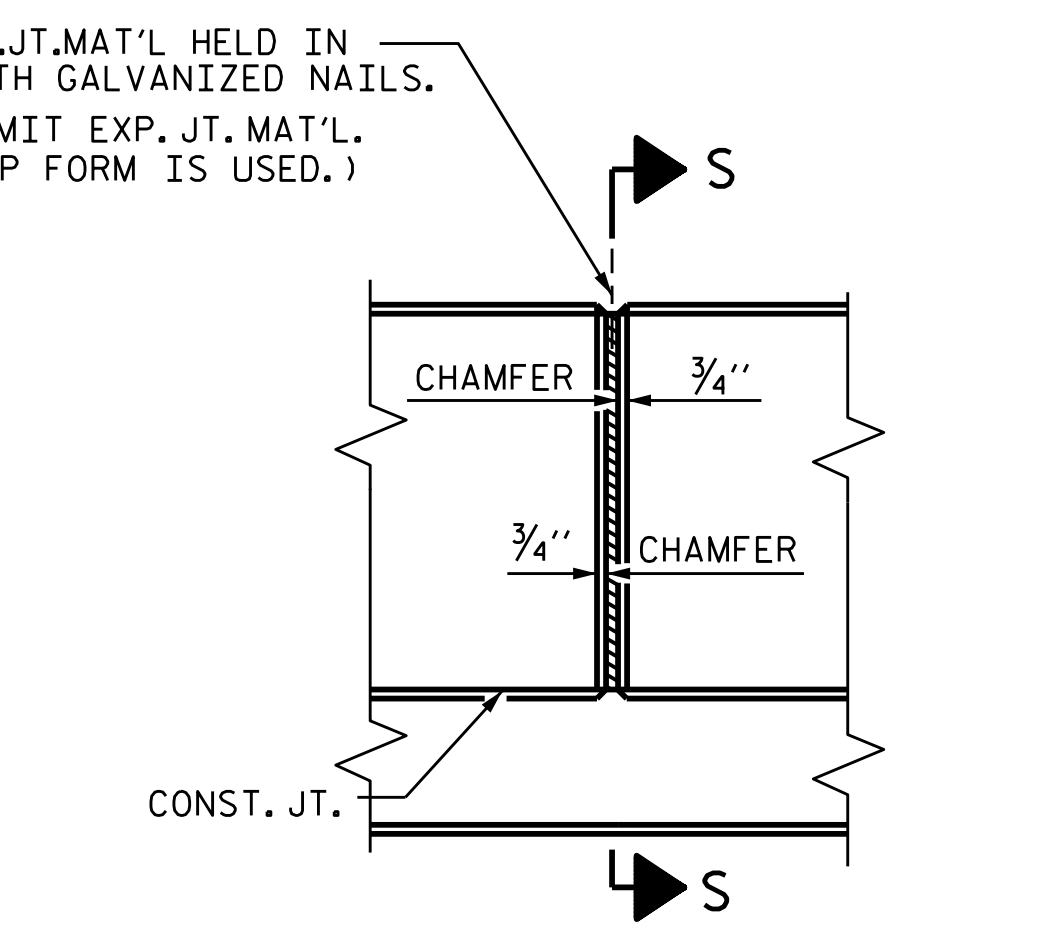


SIDE VIEW



SECTION S-S
AT DAM IN OPEN JOINT
(THIS IS TO BE USED ONLY
WHEN SLIP FORM IS USED)

SECTION THRU RAIL



ELEVATION AT EXPANSION JOINTS
BARRIER RAIL DETAILS

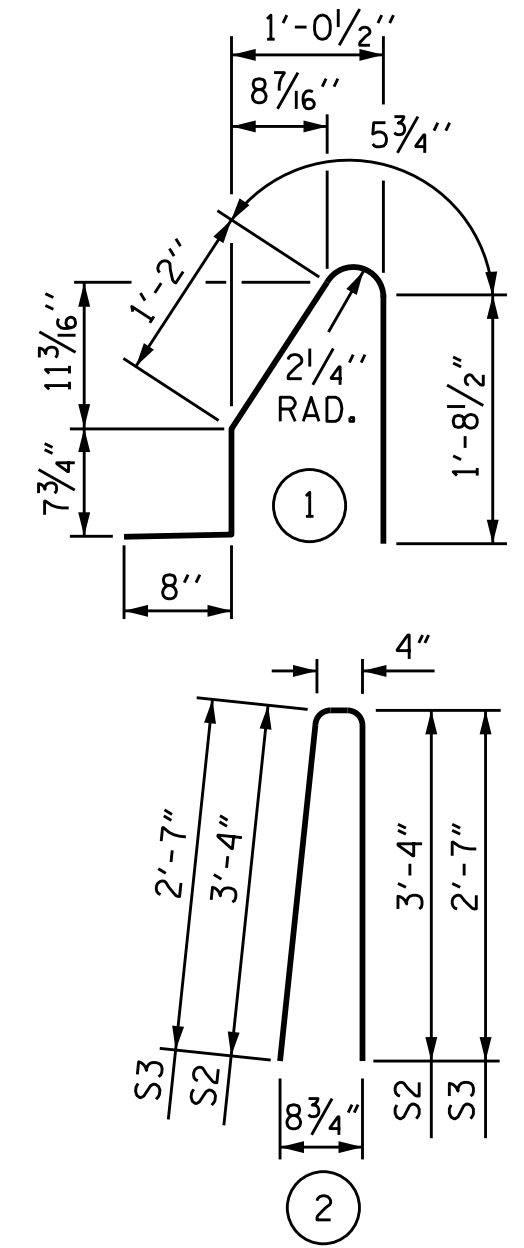
NOTES

THE BARRIER RAIL IN EACH SPAN SHALL NOT BE CAST UNTIL ALL SLAB CONCRETE IN THAT SPAN HAS BEEN CAST AND HAS REACHED A MINIMUM COMPRESSIVE STRENGTH OF 3,000 PSI.

ALL REINFORCING STEEL IN BARRIER RAILS SHALL BE EPOXY COATED.

GROOVED CONTRACTION JOINTS, 1/2" IN DEPTH, SHALL BE TOOLED IN ALL EXPOSED FACES OF THE BARRIER RAIL AND IN ACCORDANCE WITH ARTICLE 825-10(B) OF THE STANDARD SPECIFICATIONS. THE CONTRACTION JOINT SHALL BE LOCATED AT EACH THIRD POINT BETWEEN BARRIER RAIL EXPANSION JOINTS. ONLY ONE CONTRACTION JOINT IS REQUIRED AT MIDPOINT OF BARRIER RAIL SEGMENTS LESS THAN 20 FEET IN LENGTH AND NO CONTRACTION JOINTS ARE REQUIRED FOR THOSE SEGMENTS LESS THAN 10 FEET IN LENGTH.

BAR TYPES



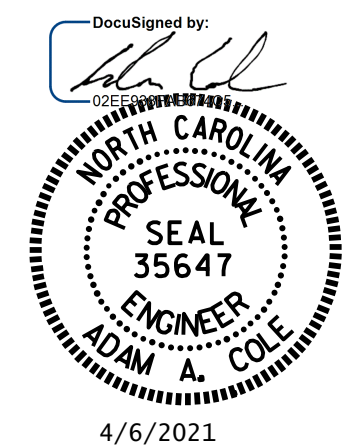
ALL BAR DIMENSIONS ARE OUT TO OUT

BILL OF MATERIAL

FOR CONCRETE BARRIER RAIL ONLY

BAR	NO.	SIZE	TYPE	LENGTH	WEIGHT
* B1	176	#5	STR	15'-7"	2861
* B2	88	#5	STR	24'-7"	2256
* S1	414	#5	1	4'-8"	2015
* S2	406	#5	2	7'-0"	2964
* S3	8	#5	2	5'-5"	45
* EPOXY COATED REINFORCING STEEL					10141 LBS.
CLASS AA CONCRETE					56.1 CU. YDS.
CONCRETE BARRIER RAIL					412.4 LIN. FT.

PROJECT NO. B-5813
CABARRUS COUNTY
STATION: 21+85.00 -L-



STATE OF NORTH CAROLINA
DEPARTMENT OF TRANSPORTATION
RALEIGH
STANDARD
CONCRETE
BARRIER RAIL

DRAWN BY : M. G. SHAIKH DATE : 07/2019
CHECKED BY : H. LOCKLEAR DATE : 08/2019
DESIGN ENGINEER OF RECORD: H. LOCKLEAR DATE : 06/2019

DOCUMENT NOT CONSIDERED
FINAL UNLESS ALL
SIGNATURES COMPLETED

REVISIONS						SHEET NO. S-16
NO.	BY:	DATE:	NO.	BY:	DATE:	
1			3			TOTAL SHEETS
2			4			29